

three inches = one foot  
one and one half inches = one foot  
one inch = one foot  
three quarters inch = one foot  
three eighths inch = one foot  
one half inch = one foot  
one quarter inch = one foot  
one eighth inch = one foot  
one sixteenth inch = one foot



5 NEMA 3R ENCLOSURE



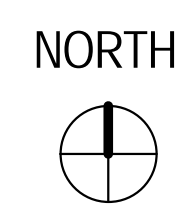
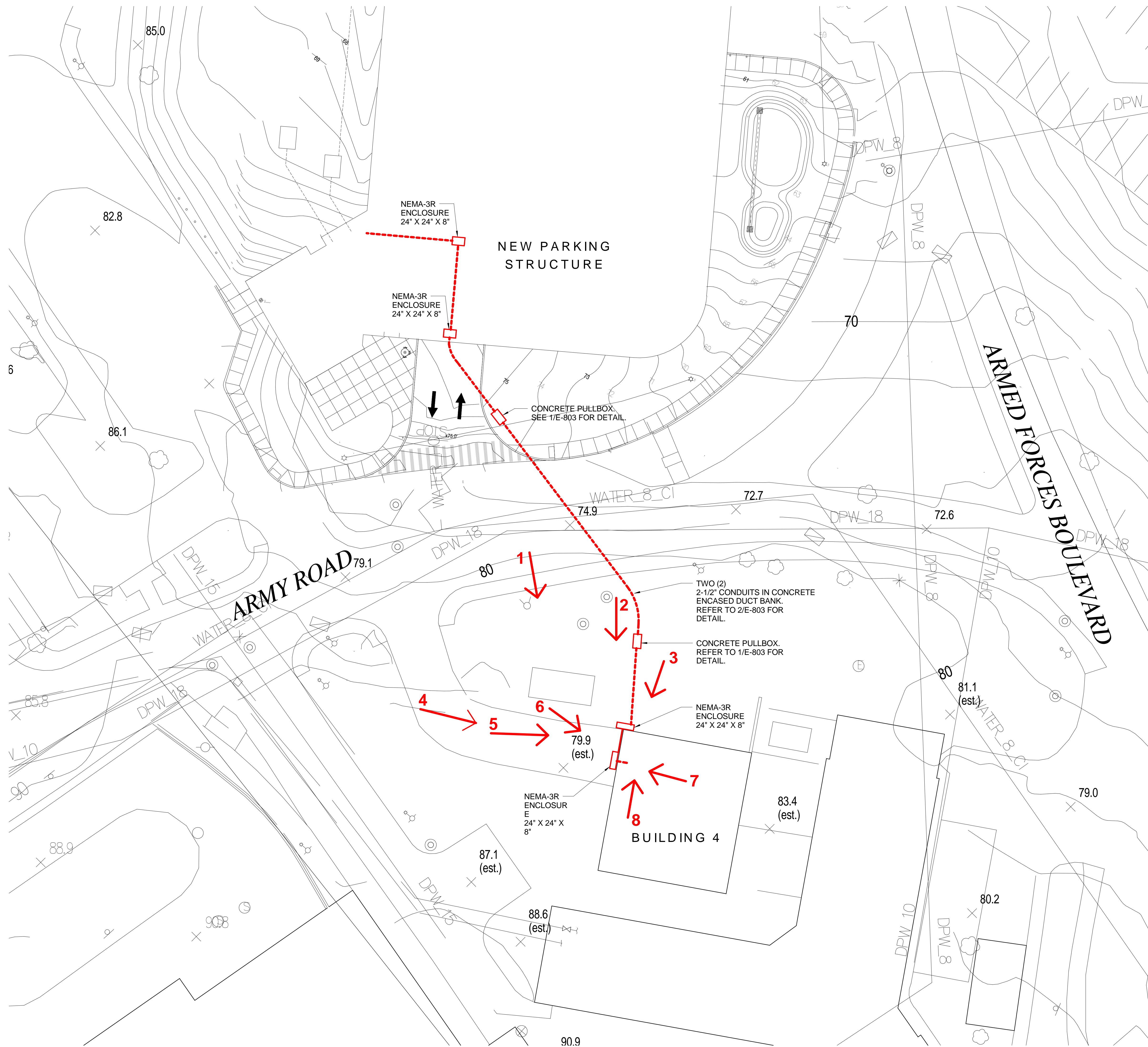
6 CONDUIT - BUILDING ENTRANCE LOCATION



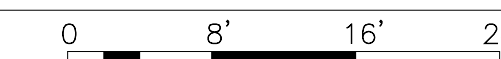
7 PLYWOOD PANEL BOARD



8



1 LOW VOLTAGE SIGNAL CONNECTIONS TO BUILDING 4  
1" = 200'-0"



1



2 NEMA 3R ENCLOSURE



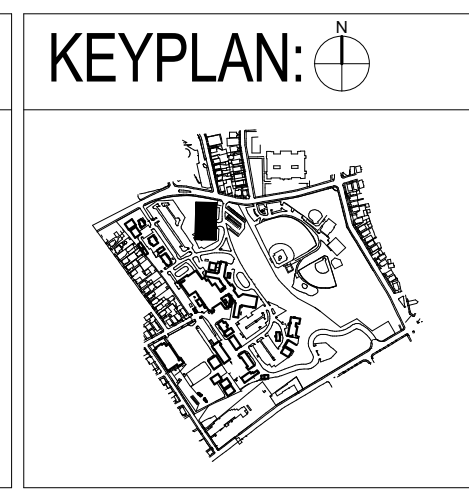
3



4

|                                       |            |
|---------------------------------------|------------|
| ISSUED FOR CONSTRUCTION DOCUMENTS     | 03-01-2017 |
| 100% CONSTRUCTION DOCUMENT SUBMITTAL  | 10-31-2016 |
| 100% CONSTRUCTION DOCUMENT SUBMISSION | 10-21-2016 |
| 60% CONSTRUCTION DOCUMENT SUBMISSION  | 04-08-2016 |
| 30% SCHEMATIC DESIGN SUBMISSION       | 01-08-2016 |
| Revisions:                            | Date       |

|                                    |  |
|------------------------------------|--|
| CONSULTANTS:                       |  |
| <b>DESMAN</b><br>Design Management | 18 TREMON STREET<br>SUITE 300<br>BOSTON, MASSACHUSETTS<br>02108<br>TELEPHONE: 617.778.9882<br>www.desman.com             |
|                                    | <b>vhb</b><br>1 CEDAR STREET<br>SUITE 400<br>PROVIDENCE, RHODE ISLAND<br>02903<br>TELEPHONE: 401.272.8100<br>www.vhb.com |

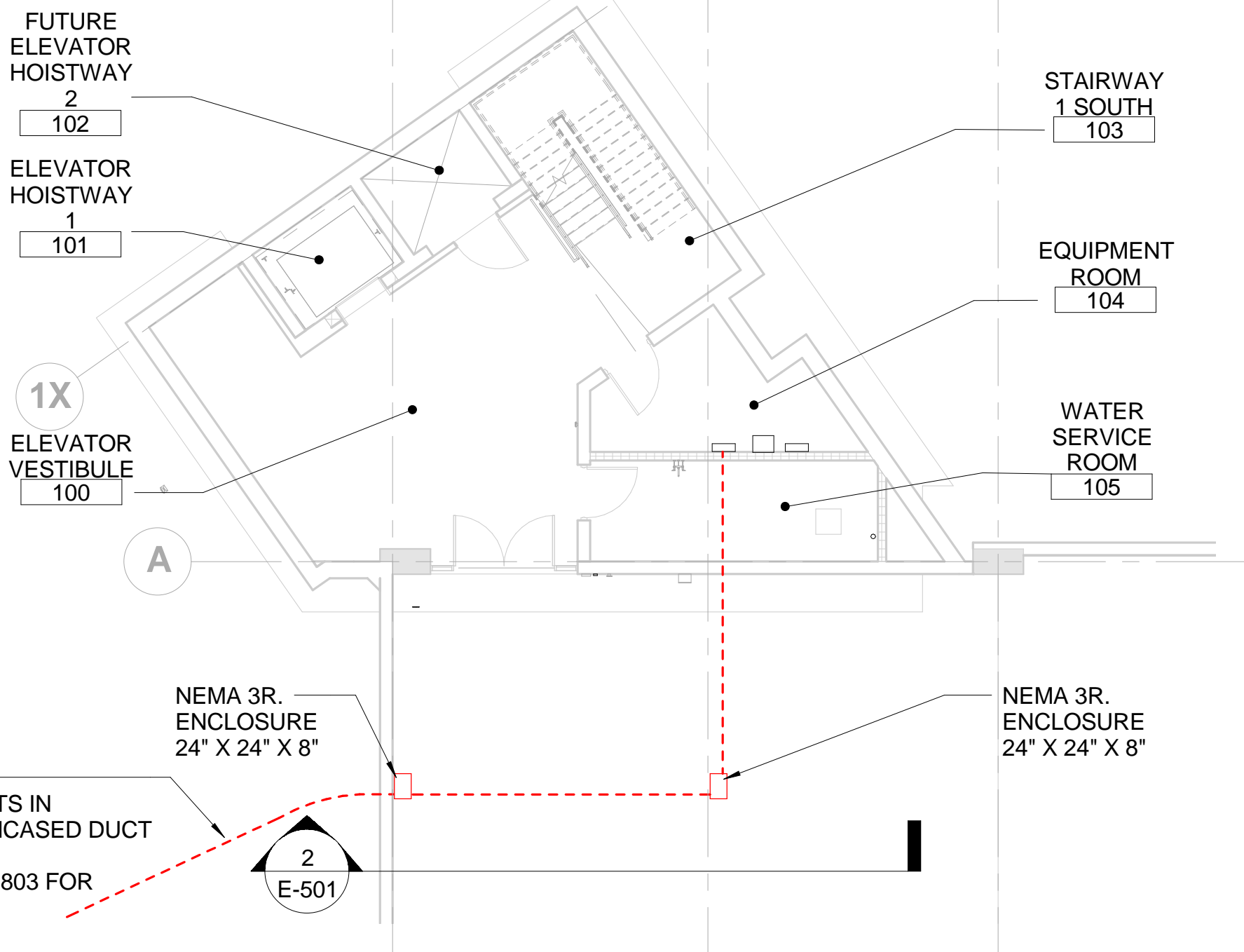
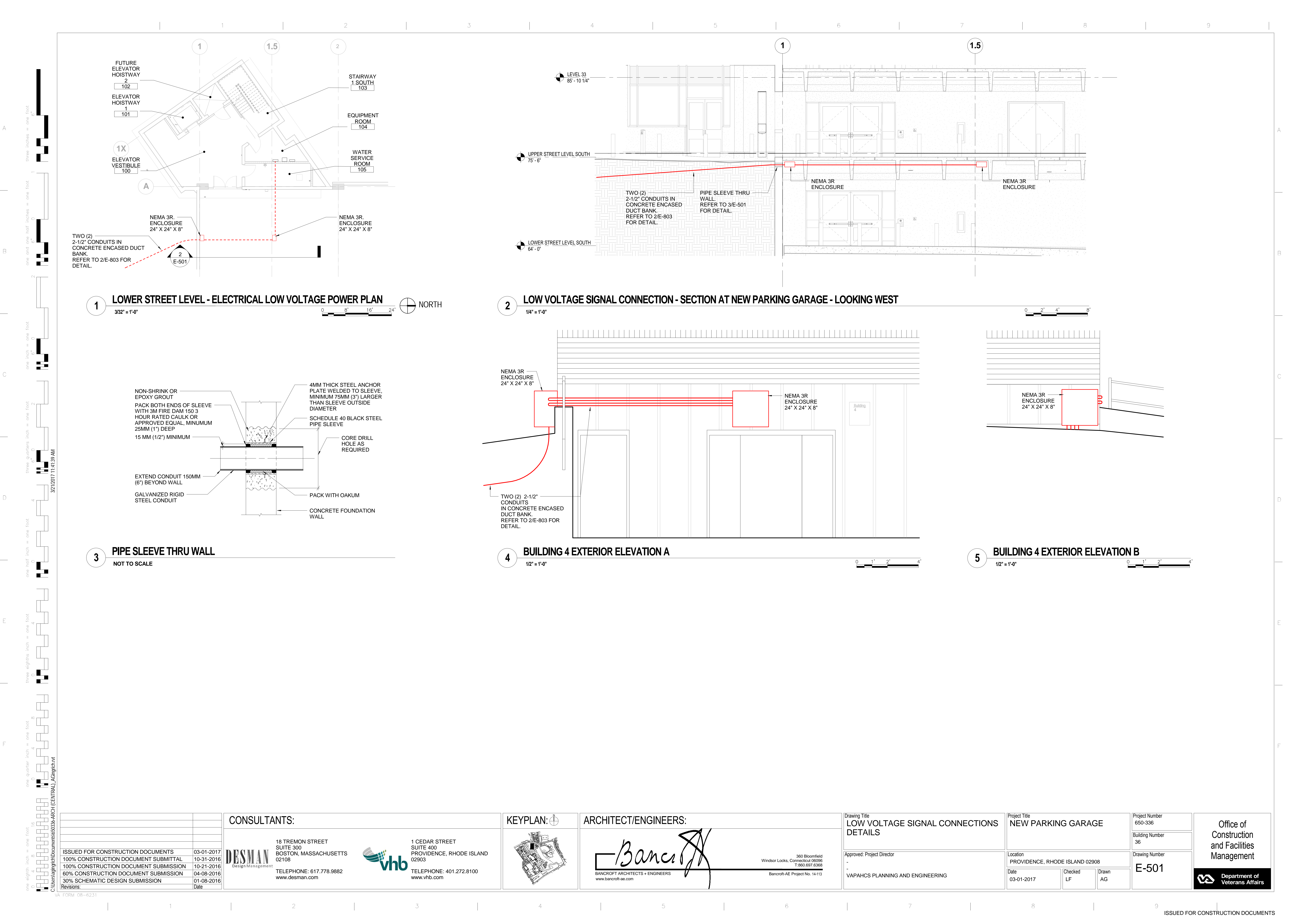


|   |  |
|---|--|
| ARCHITECT/ENGINEERS:  |  |
| <b>Bancroft</b><br>BANCROFT ARCHITECTS + ENGINEERS<br>www.bancroft-ae.com                               |  |
| 360 Bloomfield<br>Windsor Locks, Connecticut 06096<br>T: 860.897.6368<br>Bancroft-AE Project No. 14-113 |  |

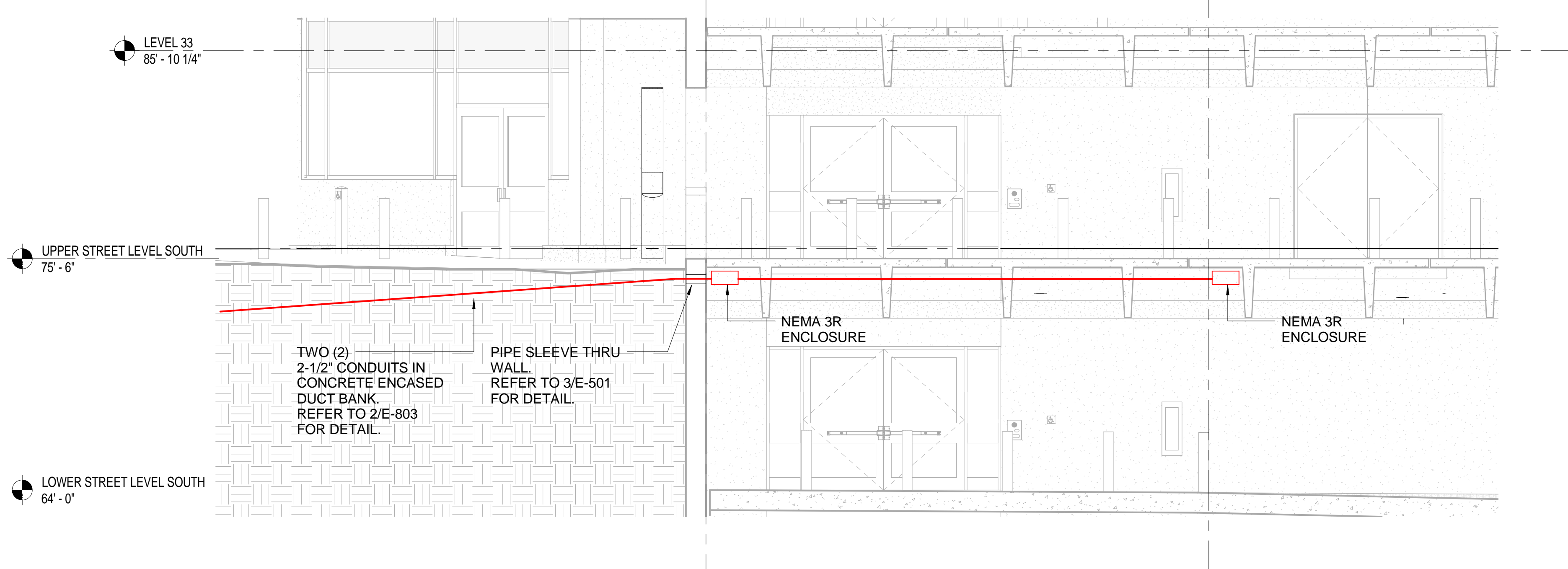
|                                  |  |
|----------------------------------|--|
| Drawing Title                    | LOW VOLTAGE SIGNAL CONNECTIONS TO BUILDING 4 |
| Approved: Project Director       | -  |
| VAPAHCS PLANNING AND ENGINEERING |  |

|  |         |                 |
|--|---------|-----------------|
| Project Title  |         | Project Number  |
| NEW PARKING GARAGE   |         | 650-336         |
| Location   |         | Building Number |
| PROVIDENCE, RHODE ISLAND 02908   |         | 36              |
| Date   | Checked | Drawn           |
| 03-01-2017   | LF      | AG              |
| Drawing Number   |         | E-500           |
| Office of Construction and Facilities Management<br>Department of Veterans Affairs |         |                 |

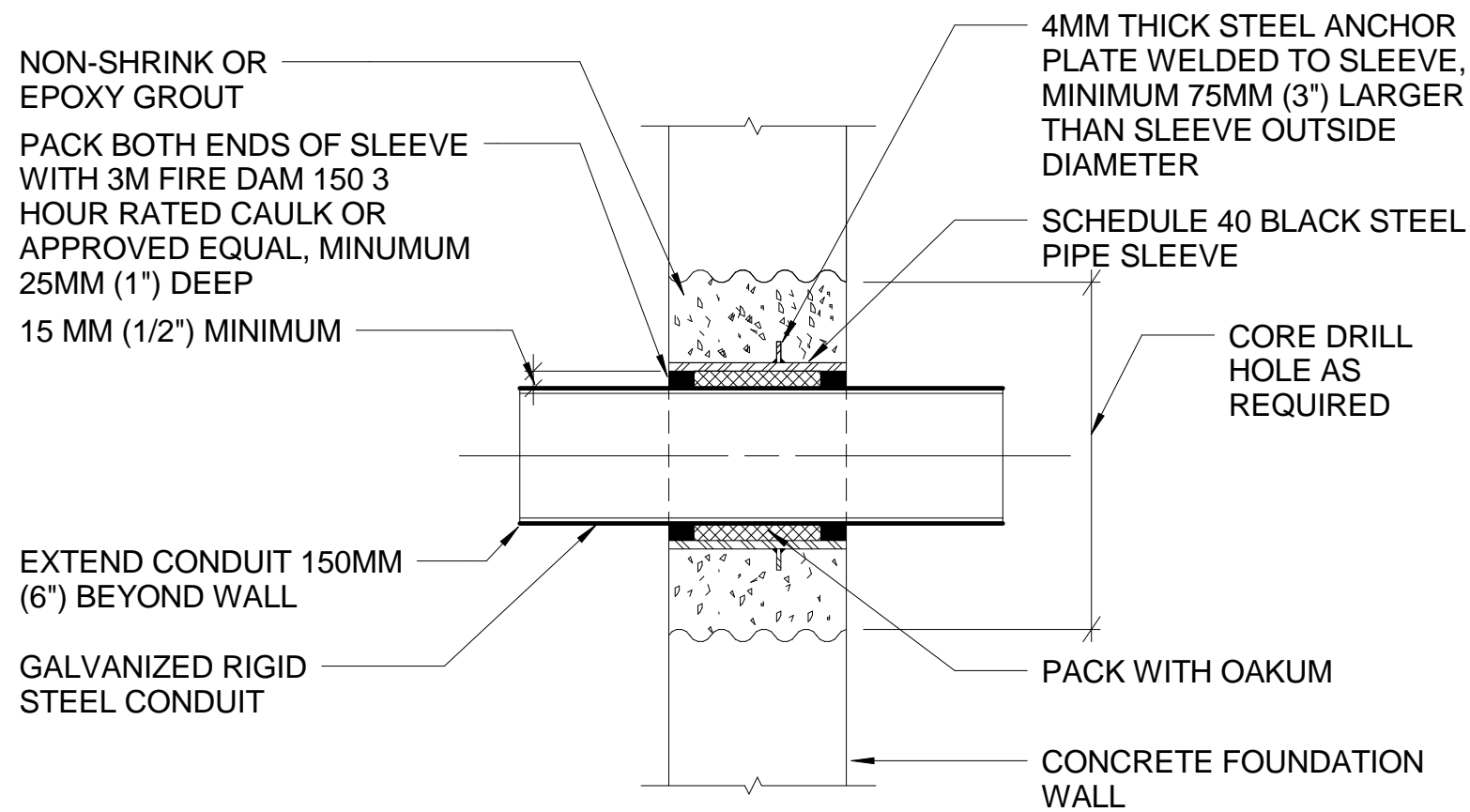




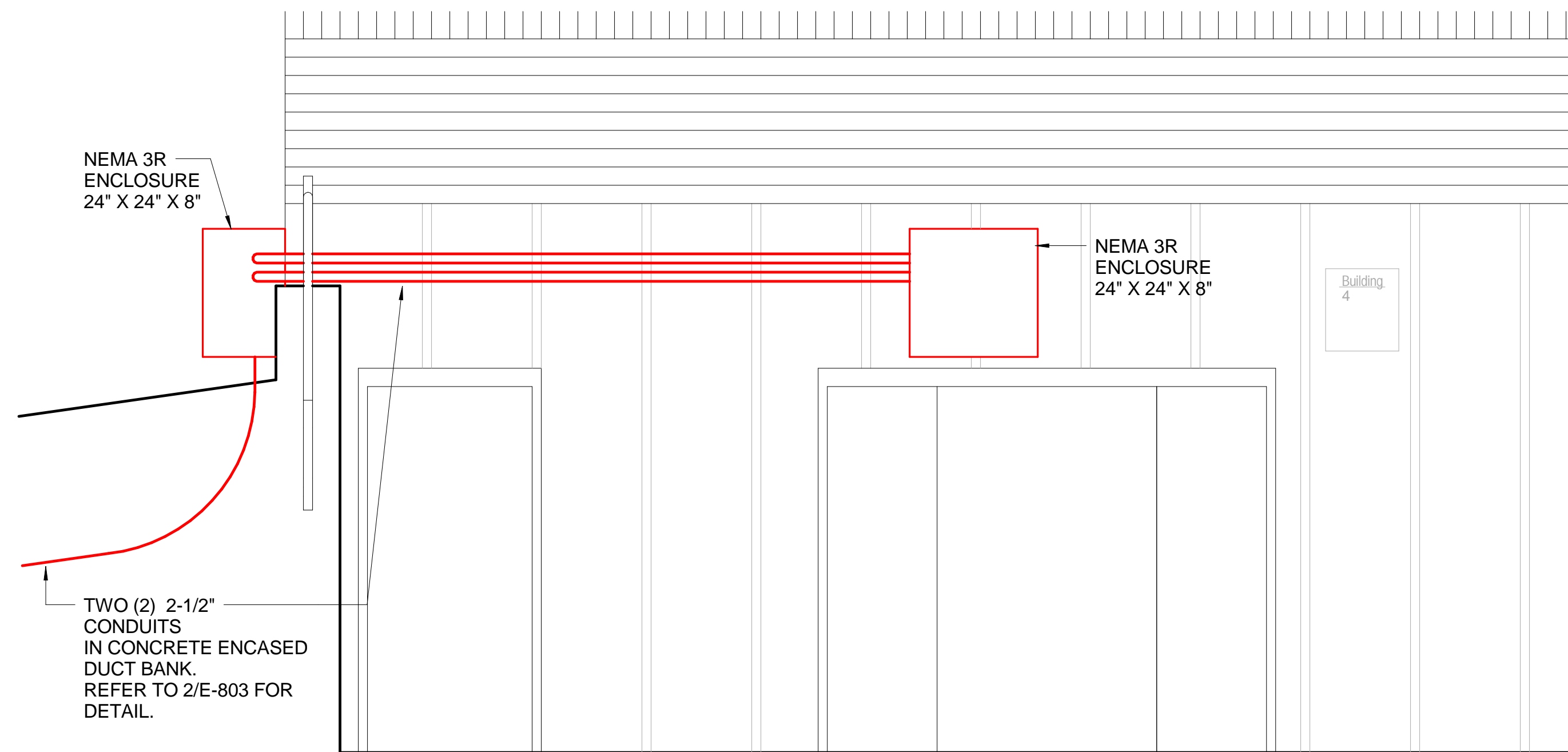
1 LOWER STREET LEVEL - ELECTRICAL LOW VOLTAGE POWER PLAN  
3/32\"/>



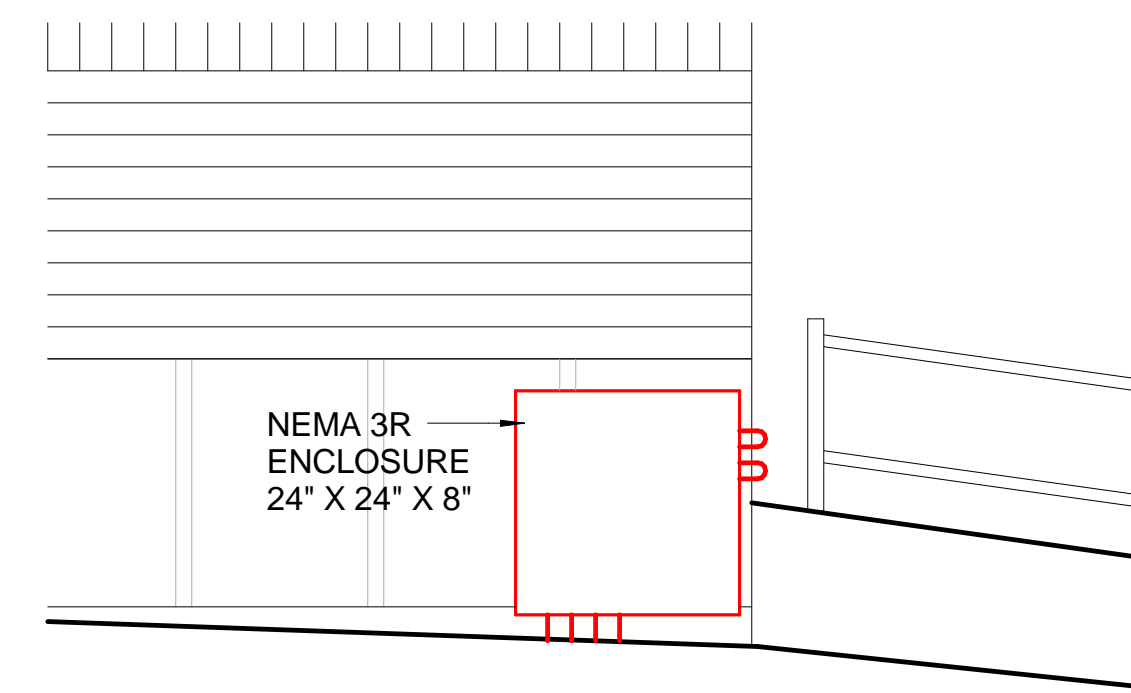
2 LOW VOLTAGE SIGNAL CONNECTION - SECTION AT NEW PARKING GARAGE - LOOKING WEST  
1/4\"/>



3 PIPE SLEEVE THRU WALL  
NOT TO SCALE



4 BUILDING 4 EXTERIOR ELEVATION A  
1/2\"/>



5 BUILDING 4 EXTERIOR ELEVATION B  
1/2\"/>

|                                       |            |
|---------------------------------------|------------|
| ISSUED FOR CONSTRUCTION DOCUMENTS     | 03-01-2017 |
| 100% CONSTRUCTION DOCUMENT SUBMITTAL  | 10-31-2016 |
| 100% CONSTRUCTION DOCUMENT SUBMISSION | 10-21-2016 |
| 60% CONSTRUCTION DOCUMENT SUBMISSION  | 04-08-2016 |
| 30% SCHEMATIC DESIGN SUBMISSION       | 01-08-2016 |
| Revisions:                            | Date       |

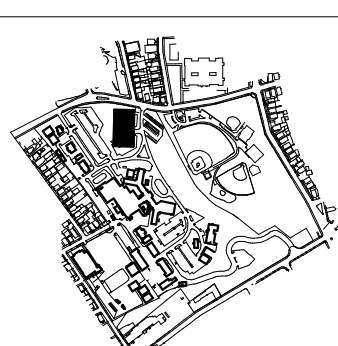
CONSULTANTS:

**DESMAN**  
Design Management  
18 TREMON STREET  
SUITE 300  
BOSTON, MASSACHUSETTS  
02108  
TELEPHONE: 617.778.9882  
www.desman.com



1 CEDAR STREET  
SUITE 400  
PROVIDENCE, RHODE ISLAND  
02903  
TELEPHONE: 401.272.8100  
www.vhb.com

KEYPLAN:



ARCHITECT/ENGINEERS:

**Bancroft**  
BANCROFT ARCHITECTS + ENGINEERS  
www.bancroft-ae.com

360 Bloomfield  
Windsor Locks, Connecticut 06096  
T: 860.897.6368

Bancroft-AE Project No. 14-113

Drawing Title  
LOW VOLTAGE SIGNAL CONNECTIONS  
DETAILS

Approved: Project Director  
-  
VAPAHS PLANNING AND ENGINEERING

Project Title  
NEW PARKING GARAGE

Location  
PROVIDENCE, RHODE ISLAND 02908

Date  
03-01-2017

Checked  
LF

Drawn  
AG

Project Number  
650-336

Building Number  
36

Drawing Number  
E-501

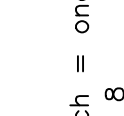
Office of  
Construction  
and Facilities  
Management

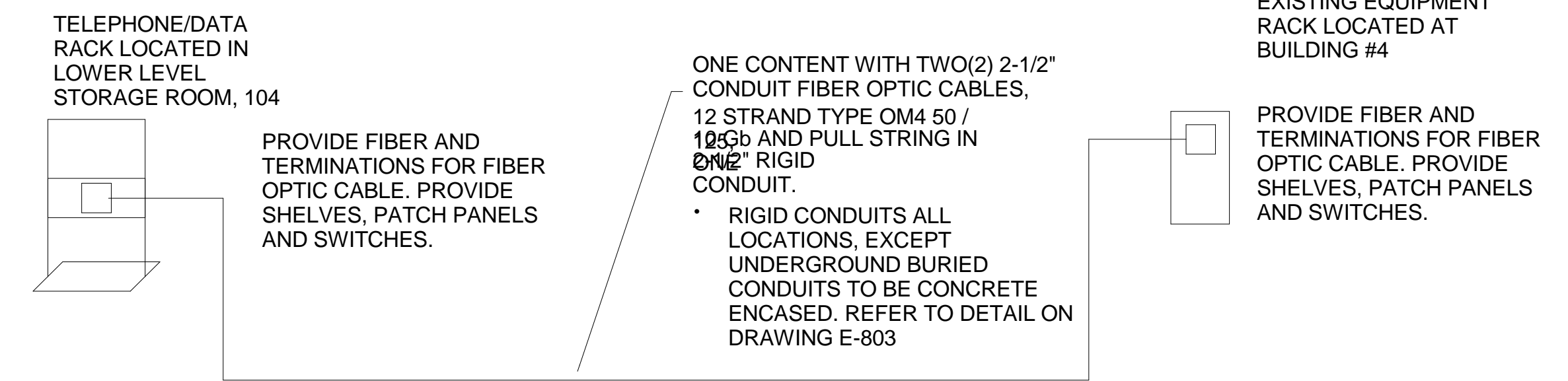




## F

- $$n = \infty$$

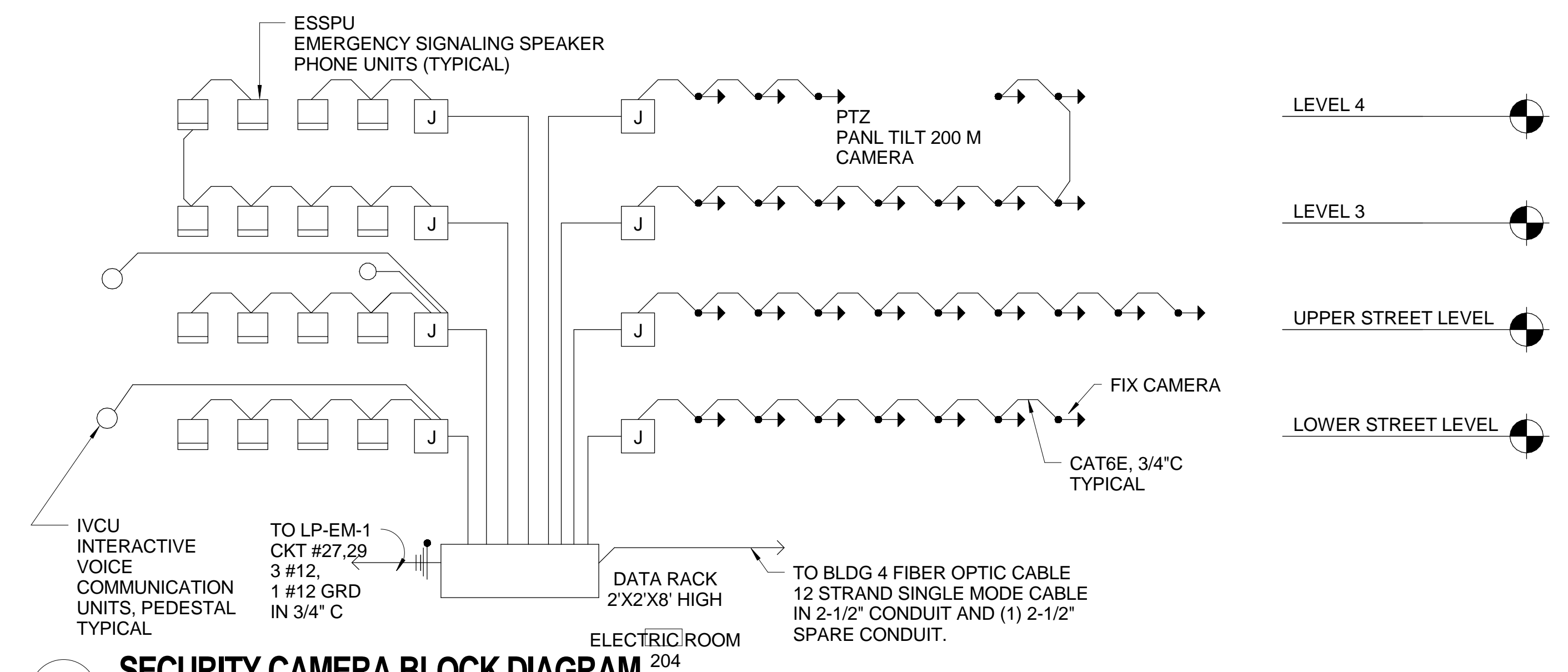
$$n = \infty$$

$$n = \infty$$
$$n = \infty$$



**2 VIDEO SURVEILLANCE ACCESS RISER DIAGRAM (REFER TO DRAWINGS E-500 & E-501)**  
NOT TO SCALE

- [illegible]

## 4 SECURITY CAMERA BLOCK DIAGRAM



Office of  
Construction  
and Facilities  
Management

 Department of  
Veterans Affairs



A

B

C

D

E

F

three inches = one foot

one and one half inches = one foot

one inch = one foot

three quarters inch = one foot

one half inch = one foot

three eighths inch = one foot

one quarter inch = one foot

one eighth inch = one foot

K:\CC-PROJECTS\2014\14-113 - V&A\1 - 15-R-008 Providence RI V&A\400- Design Documents\400- Drawings\ELECTRICAL\Drawings - FINAL SUBMITTAL\E-701 - ELECTRICAL PANEL SCHEDULES.dwg 3-20-17 01:02:06 PM A56mrich

SWITCHBOARD: LDP-1

LOCATION: ELECTRICAL ROOM 204 TYPE: NEMA 1, CIRCUIT BREAKER BUS SIZE 800A

MAIN 800A MCB MOUNTING : SURFACE VOLTAGE : 120 / 208 V. 3  $\phi$  4 W.

| CCT   | DESCRIPTION                 | 3 $\phi$<br>KVA | 3 $\phi$<br>AMPS | OCP DEVICE (3P) |
|-------|-----------------------------|-----------------|------------------|-----------------|
| 1     | MAIN                        | 0.0             | 0.0              | 800A/3P         |
| 2     | BATS-1/LDP-EM               | 58.143          | 161.62           | 400A/3P         |
| 3     | LP-1                        | 19.9            | 55.2             | 200A/3P         |
| 4     | LP-2                        | 49.512          | 131.4            | 200A/3P         |
| 5     | WATER HEATER 'WH-36-LL-001' | 18.0            | 50.0             | 60A/3P          |
| 6     | TVSS UNIT                   | 0.0             | 0.0              | 30A/3P          |
| 7     | SPARE                       | 0.0             | 0.0              | 200A/3P         |
| 8     | SPARE                       | 0.0             | 0.0              | 100A/3P         |
| 9     | SPARE                       | 0.0             | 0.0              | 60A/3P          |
| 10    | SPARE                       | 0.0             | 0.0              | 30A/3P          |
| TOTAL |                             | 146.055         | 404.22           |                 |

42,000 AIC RATED

SWITCHBOARD: LDP-EM

LOCATION: ELECTRICAL ROOM 204 TYPE: NEMA 1, CIRCUIT BREAKER BUS SIZE 400A

MAIN 400A MCB MOUNTING : SURFACE VOLTAGE : 120 / 208 V. 3  $\phi$  4 W.

| CCT   | DESCRIPTION          | 3 $\phi$<br>KVA | 3 $\phi$<br>AMPS | OCP DEVICE (3P) |
|-------|----------------------|-----------------|------------------|-----------------|
| 1     | MAIN                 |                 |                  | 400A/3P         |
| 2     | LP-EM-1              | 24.562          | 68.18            | 200A/3P         |
| 3     | LP-EM-2              | 14.771          | 41.00            | 200A/3P         |
| 4     | ELEVATOR #1          | 19.01           | 53               | 70A/3P *        |
| 5     | ELEVATOR #2 (FUTURE) | 0.0             | 0.0              | 70A/3P *        |
| 6     | TVSS UNIT            | 0.0             | 0.0              | 30A/3P          |
| 7     | SPARE                | 0.0             | 0.0              | 100A/3P         |
| 8     | SPARE                | 0.0             | 0.0              | 60A/3P          |
| 9     | SPARE                | 0.0             | 0.0              | 30A/3P          |
| TOTAL |                      | 58.343          | 162.0            |                 |

42,000 AIC RATED

\* PROVIDE CIRCUIT BREAKER WITH SHUNT TRIP

PANELBOARD: LP-1

PANEL LOC. ELECTRICAL ROOM 204 PANEL TYPE NEMA 1, BOLT-ON, CB BUS SIZE 200A

MAIN 200A MCB MOUNTING : SURFACE VOLTAGE : 120 / 208 V. 3  $\phi$  4 W.

| CCT C/B        | DESCRIPTION                   | A $\phi$<br>VA  | B $\phi$<br>VA  | C $\phi$<br>VA  | DESCRIPTION                                 | C/B CCT |
|----------------|-------------------------------|-----------------|-----------------|-----------------|---|---------|
| 1 20/1         | LOWER LEVEL GFCI RECEPTACLES  | 540 $\phi$ 2500 |                 |                 | CAR CHARGER STATION (30 AMPS 208V, 1 PHASE) | 30/2    |
| 3 20/1         | LOWER LEVEL GFCI RECEPTACLES  |                 | 540 $\phi$ 2500 |                 |   | 2/4     |
| 5 20/1         | LOWER LEVEL GFCI RECEPTACLES  |                 |                 | 540 $\phi$ 2500 | CAR CHARGER STATION (30 AMPS 208V, 1 PHASE) | 30/6    |
| 7 20/1         | LOWER LEVEL GARAGE GFCI RECEP | 540 $\phi$ 2500 |                 |                 |   | 2/8     |
| 9 20/1         | LOWER LEVEL GARAGE GFCI RECEP |                 | 540 $\phi$ 0    |                 | SPARE                                       | 20/10   |
| 11 20/1        | UPPER LEVEL RECEPTACLES       |                 |                 | 720 $\phi$ 0    | SPARE                                       | 20/12   |
| 13 20/1        | UPPER LEVEL RECEPTACLES       | 720 $\phi$ 0    |                 |                 | SPARE                                       | 20/14   |
| 15 20/1        | UPPER LEVEL GARAGE GFCI RECEP |                 | 720 $\phi$ 0    |                 | SPARE                                       | 20/16   |
| 17 20/1        | UPPER LEVEL GARAGE GFCI RECEP |                 |                 | 720 $\phi$ 0    | SPARE                                       | 20/18   |
| 19 20/1        | 3RD LEVEL RECEPTACLES         | 720 $\phi$ 0    |                 |                 | SPARE                                       | 20/20   |
| 21 20/1        | 3RD LEVEL GARAGE GFCI RECEP   |                 | 720 $\phi$ 0    |                 | SPARE                                       | 20/22   |
| 23 20/1        | 3RD LEVEL GARAGE GFCI RECEP   |                 |                 | 720 $\phi$ 0    | SPARE                                       | 20/24   |
| 25 20/1        | 4TH LEVEL RECEPTACLES         | 540 $\phi$ 0    |                 |                 | SPARE                                       | 20/26   |
| 27 20/1        | 4TH LEVEL RECEPTACLES         |                 | 540 $\phi$ 0    |                 | SPARE                                       | 20/28   |
| 29 20/1        | 4TH LEVEL GARAGE GFCI RECEP   |                 |                 | 540 $\phi$ 0    | SPARE                                       | 20/30   |
| 31 20/1        | 4TH LEVEL GARAGE GFCI RECEP   | 540 $\phi$ 0    |                 |                 | SPARE                                       | 20/32   |
| 33 20/1        | SPARE                         |                 | 0 $\phi$ 0      |                 | SPARE                                       | 20/34   |
| 35 20/1        | SPARE                         |                 |                 | 0 $\phi$ 0      | SPARE                                       | 20/36   |
| 37 20/1        | SPARE                         | 0 $\phi$ 0      |                 |                 | SPARE                                       | 20/38   |
| 39 20/1        | SPARE                         |                 | 0 $\phi$ 0      |                 | SPARE                                       | 20/40   |
| 41 20/1        | SPARE                         |                 |                 | 0 $\phi$ 0      | SPARE                                       | 20/42   |
| TOTAL VA/PHASE |                               | 8,600           | 5,560           | 5,740           | TOTAL VA                                    | 19,900  |
|                |                               |                 |                 | TOTAL AMPS      | 55.2  |         |

10,000 AIC RATED

PANELBOARD: LP-2

PANEL LOC. ELECTRICAL ROOM 204 PANEL TYPE NEMA 1, BOLT-ON, CB BUS SIZE 200A

MAIN 200A MCB MOUNTING : SURFACE VOLTAGE : 120 / 208 V. 3  $\phi$  4 W.

| CCT C/B        | DESCRIPTION                     | A $\phi$<br>VA   | B $\phi$<br>VA   | C $\phi$<br>VA | DESCRIPTION                    | C/B CCT |
|----------------|---------------------------------|------------------|------------------|----------------|--------------------------------|---------|
| 1 30/2         | UNIT HEATER 'UH-36-LL-001'      | 2500 $\phi$ 2500 |                  |                | UNIT HEATER 'UH-36-3-008'      | 30/2    |
| 3 20/2         |                                 |                  | 2500 $\phi$ 2500 |                |                                | 2/4     |
| 5 20/2         |                                 |                  |                  | 950 $\phi$ 950 | UNIT HEATER 'UH-36-3-009'      | 20/6    |
| 7 20/2         | UNIT HEATER 'UH-36-LL-002'      | 950 $\phi$ 950   |                  |                |                                | 2/8     |
| 9 20/2         |                                 |                  | 950 $\phi$ 950   |                | UNIT HEATER 'UH-36-3-010'      | 20/10   |
| 11 30/2        |                                 |                  |                  | 950 $\phi$ 950 |                                | 2/12    |
| 13 30/2        | UNIT HEATER 'UH-36-UL-004'      | 2500 $\phi$ 2500 |                  |                | UNIT HEATER 'UH-36-4-011'      | 30/14   |
| 15 20/2        |                                 |                  | 2500 $\phi$ 2500 |                |                                | 2/16    |
| 17 20/2        |                                 |                  |                  | 950 $\phi$ 950 | UNIT HEATER 'UH-36-4-012'      | 20/18   |
| 19 20/2        | UNIT HEATER 'UH-36-UL-005'      | 950 $\phi$ 950   |                  |                |                                | 2/20    |
| 21 20/2        |                                 |                  | 950 $\phi$ 950   |                | UNIT HEATER 'UH-36-4-013'      | 20/22   |
| 23 20/2        | UNIT HEATER 'UH-36-UL-006'      |                  |                  | 950 $\phi$ 950 |                                | 2/24    |
| 25 20/2        | UNIT HEATER 'UH-36-UL-007'      | 950 $\phi$ 950   |                  |                | UNIT HEATER 'UH-36-4-014'      | 20/26   |
| 27 20/2        |                                 |                  | 950 $\phi$ 950   |                |                                | 2/28    |
| 29 20/2        |                                 |                  |                  | 28 $\phi$ 2600 | CONDENSING UNIT 'CU-36-UL-001' | 40/30   |
| 31 20/2        | DUCT FREE SPLIT 'DSS-36-UL-001' | 28 $\phi$ 2600   |                  |                |                                | 2/32    |
| 33 20/2        |                                 |                  | 28 $\phi$ 2600   |                | CONDENSING UNIT 'CU-36-UL-002' | 40/34   |
| 35 20/2        | DUCT FREE SPLIT 'DSS-36-4-002'  |                  |                  | 28 $\phi$ 2600 |                                | 2/36    |
| 37 20/1        | SPARE                           | 0 $\phi$ 0       |                  |                | SPARE                          | 20/38   |
| 39 20/1        | SPARE                           |                  | 0 $\phi$ 0       |                | SPARE                          | 20/40   |
| 41 20/1        | SPARE                           |                  |                  | 0 $\phi$ 0     | SPARE                          | 20/42   |
| TOTAL VA/PHASE |                                 | 18,328           | 18,328           | 12,856         | TOTAL VA                       | 49,512  |
|                |                                 |                  |                  | TOTAL AMPS     | 137.4                          |         |

10,000 AIC RATED

#### CONSULTANTS:

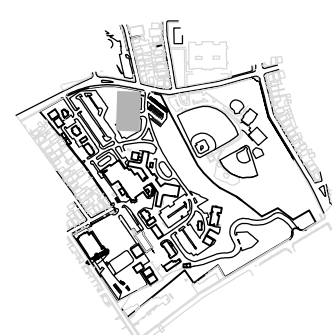
**DESMAN**  
Design Management

18 TREMONT STREET  
SUITE 300  
BOSTON, MASSACHUSETTS 02108  
TELEPHONE: 617.778.9882  
www.desman.com

**vhb**

1 CEDAR STREET  
SUITE 400  
PROVIDENCE, RHODE ISLAND 02903  
TELEPHONE: 401.272.8100  
www.vhb.com

#### KEYPLAN



#### ARCHITECT + ENGINEERS:

**Bancroft**  
BANCROFT ARCHITECTS + ENGINEERS

360 Bloomfield  
Windsor Locks, Connecticut 06096  
Telephone: 860.697.6368  
www.bancroft-a-e.com  
Bancroft-AE Project No. 14-113

#### Drawing Title

ELECTRICAL PANEL SCHEDULES

#### Approved Project Director

#### Project Title

NEW PARKING GARAGE

#### Project Number

650-336

#### Building Number

36

#### Drawing Number

E-701

#### Location

PROVIDENCE, RHODE ISLAND 02908

#### Date

03-01-2017

#### Checked

LF

#### Drawn

BD, YY

Office of  
Construction  
and Facilities  
Management

Department of  
Veterans Affairs



one eighth inch = one foot  
one quarter inch = one foot  
three eighths inch = one foot  
one half inch = one foot  
three quarters inch = one foot  
one inch = one foot  
one and one half inches = one foot  
three inches = one foot  
A  
B  
C  
D  
E  
F

| PANELBOARD: LP-EM-1   |         |                                 |                 |                 |                  |                                |         |     |  |
|---|---------|---------------------------------|-----------------|-----------------|------------------|--------------------------------|---------|-----|--|
| PANEL LOC. ELECTRICAL ROOM 204 PANEL TYPE NEMA 1, BOLT-ON, CB BUS SIZE 200A                         |         |                                 |                 |                 |                  |                                |         |     |  |
| MAIN 200A MCB MOUNTING : SURFACE VOLTAGE : 120 / 208 V. 3 $\phi$ 4 W.                               |         |                                 |                 |                 |                  |                                |         |     |  |
| CCT   | C/B     | DESCRIPTION                     | A $\phi$<br>VA  | B $\phi$<br>VA  | C $\phi$<br>VA   | DESCRIPTION                    | C/B     | CCT |  |
| 1   | 20<br>1 | ELEVATOR #1 CAB LIGHT/HEAT/VENT | 200 $\phi$ 36   |                 |                  | EMERGENCY EXIT SIGNS           | 20<br>1 | 2   |  |
| 3   | 20<br>1 | FUTURE ELEVATOR #2 CAB          |                 | 200 $\phi$ 448  |                  | SOUTH STAIRWAY LIGHTING        | 20<br>1 | 4   |  |
| 5   | 20<br>1 | SUMP PUMP 'SP-36-LL-001'        |                 |                 | 1656 $\phi$ 370  | LOWER LEVEL VESTIBULE LIGHTING | 20<br>1 | 6   |  |
| 7   | 20<br>1 | SUMP PUMP 'SP-36-LL-002'        | 864 $\phi$ 56   |                 |                  | LOWER LEVEL ENTRY LIGHTING     | 20<br>1 | 8   |  |
| 9   | 20<br>1 |                                 |                 | 832 $\phi$ 672  |                  | LOWER LEVEL GARAGE LIGHTING    | 20<br>1 | 10  |  |
| 11  | 20<br>2 | SUMP PUMP 'SP-36-LL-003'        |                 |                 | 832 $\phi$ 1008  | LOWER LEVEL GARAGE LIGHTING    | 20<br>1 | 12  |  |
| 13  | 20<br>1 | ELEC. ROOM 204 EQUIP. RECEPTS.  | 540 $\phi$ 252  |                 |                  | LOWER LEVEL GARAGE ENTRY LTG.  | 20<br>1 | 14  |  |
| 15  | 20<br>1 | ELEC. ROOM 204 EQUIP. RECEPTS.  |                 | 540 $\phi$ 112  |                  | UPPER LEVEL EXTERIOR LIGHTING  | 20<br>1 | 16  |  |
| 17  | 20<br>1 | ELEC. ROOM 204 EQUIP. RECEPTS.  |                 |                 | 540 $\phi$ 296   | UPPER LEVEL VESTIBULE LIGHTING | 20<br>1 | 18  |  |
| 19  | 20<br>1 | ELEC. ROOM 204 EQUIP. RECEPTS.  | 540 $\phi$ 280  |                 |                  | UPPER LEVEL GARAGE ENTRY LTG.  | 20<br>1 | 20  |  |
| 21  | 20<br>1 | ELEVATOR EXHAUST FANS           |                 | 696 $\phi$ 1080 |                  | UPPER LEVEL GARAGE LIGHTING    | 20<br>1 | 22  |  |
| 23  | 20<br>1 | AUTOMATIC DOOR OPENERS (5)      |                 |                 | 1200 $\phi$ 1080 | UPPER LEVEL GARAGE LIGHTING    | 20<br>1 | 24  |  |
| 25  | 20<br>1 | HEAT TRACE UPPER STREET LEVEL   | 600 $\phi$ 280  |                 |                  | 3RD LEVEL VESTIBULE LIGHTING   | 20<br>1 | 26  |  |
| 27  | 20<br>1 | HEAT TRACE 3RD FLOOR            |                 | 600 $\phi$ 864  |                  | 3RD LEVEL GARAGE LIGHTING      | 20<br>1 | 28  |  |
| 29  | 20<br>1 | HEAT TRACE 4TH FLOOR            |                 |                 | 600 $\phi$ 864   | 3RD LEVEL GARAGE LIGHTING      | 20<br>1 | 30  |  |
| 31  | 40<br>1 | GENERATOR 120/208V, MISC. LOAD  | 2000 $\phi$ 370 |                 |                  | 4TH LEVEL VESTIBULE LIGHTING   | 20<br>1 | 32  |  |
| 33  | 20<br>2 |                                 |                 | 2500 $\phi$ 954 |                  | 4TH LEVEL GARAGE LIGHTING      | 20<br>1 | 34  |  |
| 35  | 20<br>1 | PTZ CAMERA                      |                 |                 | 200 $\phi$ 200   | FIRE ALARM SYSTEM FACP *       | 20<br>1 | 36  |  |
| 37  | 20<br>1 | SPARE                           | 0 $\phi$ 200    |                 |                  | FIRE ALARM SYSTEM NAC *        | 20<br>1 | 38  |  |
| 39  | 20<br>1 | SPARE                           |                 | 0 $\phi$ 0      |                  | SPARE                          | 20<br>1 | 40  |  |
| 41  | 20<br>1 | SPARE                           |                 |                 | 0 $\phi$ 0       | SPARE                          | 20<br>1 | 42  |  |
| TOTAL VA/PHASE  |         |                                 | 6,218           | 9,498           | 8,846            | TOTAL VA                       | 24,562  |     |  |
|   |         |                                 |                 |                 |                  | TOTAL AMPS                     | 68.18   |     |  |
| 10,000 AIC RATED * PROVIDE CIRCUIT BREAKER LOCK-ON DEVICES FOR ALL EM EXIT AND FIRE ALARM CIRCUITS. |         |                                 |                 |                 |                  |                                |         |     |  |

| PANELBOARD: LP-EM-2   |     |                                 |                 |                 |                 |                              |        |     |    |
|---|-----|---------------------------------|-----------------|-----------------|-----------------|------------------------------|--------|-----|----|
| PANEL LOC. ELECTRICAL ROOM 206 PANEL TYPE NEMA 1, BOLT-ON, CB BUS SIZE 200A                         |     |                                 |                 |                 |                 |                              |        |     |    |
| MAIN 200A MCB MOUNTING : SURFACE VOLTAGE : 120 / 208 V. 3 $\phi$ 4 W.                               |     |                                 |                 |                 |                 |                              |        |     |    |
| CCT   | C/B | DESCRIPTION                     | A $\phi$<br>VA  | B $\phi$<br>VA  | C $\phi$<br>VA  | DESCRIPTION                  | C/B    | CCT |    |
| 1   | 20  | SUMP PUMP 'SP-36-LL-004'        | 832 $\phi$ 648  |                 |                 | LOWER LEVEL GARAGE LIGHTING  | 20     | 1   | 2  |
| 3   | 2   |                                 |                 | 832 $\phi$ 1080 |                 | LOWER LEVEL GARAGE LIGHTING  | 20     | 1   | 4  |
| 5   | 20  | ELEC. ROOM 206 EQUIP. RECEPTS.  |                 |                 | 540 $\phi$ 448  | NORTH STAIRWAY LIGHTING      | 20     | 1   | 6  |
| 7   | 20  | ELEC. ROOM 206 EQUIP. RECEPTS.  | 540 $\phi$ 37   |                 |                 | ELECTRICAL ROOM 206 LIGHTING | 20     | 1   | 8  |
| 9   | 20  | ELEC. ROOM 206 EQUIP. RECEPTS.  |                 | 540 $\phi$ 1080 |                 | UPPER LEVEL GARAGE LIGHTING  | 20     | 1   | 10 |
| 11  | 20  | HEAT TRACE - LOWER STREET LEVEL |                 |                 | 600 $\phi$ 1080 | UPPER LEVEL GARAGE LIGHTING  | 20     | 1   | 12 |
| 13  | 20  | HEAT TRACE - LOWER STREET LEVEL | 600 $\phi$ 1080 |                 |                 | 3RD LEVEL GARAGE LIGHTING    | 20     | 1   | 14 |
| 15  | 20  | HEAT TRACE - UPPER STREET LEVEL |                 | 600 $\phi$ 1080 |                 | 3RD LEVEL GARAGE LIGHTING    | 20     | 1   | 16 |
| 17  | 20  | HEAT TRACE - UPPER STREET LEVEL |                 |                 | 600 $\phi$ 318  | 4TH LEVEL GARAGE LIGHTING    | 20     | 1   | 18 |
| 19  | 20  | HEAT TRACE - 3RD FLOOR          | 600 $\phi$ 500  |                 |                 | NORTH FACE LOGO LIGHTING     | 20     | 1   | 20 |
| 21  | 20  | HEAT TRACE - 3RD FLOOR          |                 | 600 $\phi$ 500  |                 | EAST FACE LOGO LIGHTING      | 20     | 1   | 22 |
| 23  | 20  | SPARE                           |                 |                 | 0 $\phi$ 36     | EMERGENCY EXIT SIGNS *       | 20     | 1   | 24 |
| 25  | 20  | SPARE                           | 0 $\phi$ 0      |                 |                 | SPARE                        | 20     | 1   | 26 |
| 27  | 20  | SPARE                           |                 | 0 $\phi$ 0      |                 | SPARE                        | 20     | 1   | 28 |
| 29  | 20  | SPARE                           |                 |                 | 0 $\phi$ 0      | SPARE                        | 20     | 1   | 30 |
| 31  | 20  | SPARE                           | 0 $\phi$ 0      |                 |                 | SPARE                        | 20     | 1   | 32 |
| 33  | 20  | SPARE                           |                 | 0 $\phi$ 0      |                 | SPARE                        | 20     | 1   | 34 |
| 35  | 20  | SPARE                           |                 |                 | 0 $\phi$ 0      | SPARE                        | 20     | 1   | 36 |
| 37  | 20  | SPARE                           | 0 $\phi$ 0      |                 |                 | SPARE                        | 20     | 1   | 38 |
| 39  | 20  | SPARE                           |                 | 0 $\phi$ 0      |                 | SPARE                        | 20     | 1   | 40 |
| 41  | 20  | SPARE                           |                 |                 | 0 $\phi$ 0      | SPARE                        | 20     | 1   | 42 |
| TOTAL VA/PHASE  |     |                                 | 4,837           | 6,312           | 3,622           | TOTAL VA                     | 14,771 |     |    |
|   |     |                                 |                 |                 |                 | TOTAL AMPS                   | 41.00  |     |    |
| 10,000 AIC RATED * PROVIDE CIRCUIT BREAKER LOCK-ON DEVICES FOR ALL EM EXIT AND FIRE ALARM CIRCUITS. |     |                                 |                 |                 |                 |                              |        |     |    |

|                                       |            |
|---------------------------------------|------------|
| ISSUED FOR CONSTRUCTION DOCUMENTS     | 03-01-2017 |
| 100% CONSTRUCTION DOCUMENT SUBMITTAL  | 10-31-2016 |
| 100% CONSTRUCTION DOCUMENT SUBMISSION | 10-21-2016 |
| 60% CONSTRUCTION DOCUMENT SUBMISSION  | 04-08-2016 |
| 30% SCHEMATIC DESIGN SUBMISSION       | 01-08-2016 |
| Revisions                             | Date       |

**CONSULTANTS:**

**DESMAN**  
Design Management

18 TREMONT STREET  
SUITE 300  
BOSTON, MASSACHUSETTS 02108  
TELEPHONE: 617.778.9882  
www.desman.com

**vhb**

1 CEDAR STREET  
SUITE 400  
PROVIDENCE, RHODE ISLAND 02903  
TELEPHONE: 401.272.8100  
www.vhb.com

**KEYPLAN**

**ARCHITECT + ENGINEERS:**

BANCROFT ARCHITECTS + ENGINEERS

360 Bloomfield  
Windsor Locks, Connecticut 06096  
Telephone : 860.977.6368  
www.bancroft-ae.com  
Bancroft-AE Project No. 14-113

Drawing Title  
**ELECTRICAL PANEL SCHEDULES**

Approved: Project Director

Project Title  
**NEW PARKING GARAGE**

Location  
**PROVIDENCE, RHODE ISLAND 02908**

Date  
**03-01-2017**

Checked  
**LF**

Drawn  
**BD, YY**

Project Number  
**650-336**

Building Number  
**36**

Drawing Number  
**E-702**

Office of  
Construction  
and Facilities  
Management

Department of  
Veterans Affairs



| EQUIPMENT TAG | Ø | VOLT | HP  | AMPS  | PANELBOARD | OVER CURRENT PROTECTION | FEEDER              | LOCAL DISCONNECT         | LOCATION               | QTY |
|---------------|---|------|-----|-------|------------|-------------------------|---------------------|--------------------------|------------------------|-----|
| SP-36-LL-001  | 1 | 120  | 3/4 | 13.8  | LP-EM-1    | 20A/120V/1P             | 2#12, 1#12G, 3/4" C | LOCAL RECEPTACLE         | ELEVATOR PIT           | 1   |
| SP-36-LL-002  | 1 | 120  | 1/3 | 7.2   | LP-EM-1    | 20A/120V/1P             | 2#12, 1#12G, 3/4" C | 20A/120V/1P TH TOGGLE    | WATER SERVICE ROOM 105 | 1   |
| SP-36-LL-003  | 1 | 208  | 1.0 | 8.0   | LP-EM-1    | 20A/208V/2P             | 2#12, 1#12G, 3/4" C | 20A/208V/2P WP TH TOGGLE | LOWER LEVEL GARAGE     | 1   |
| SP-36-LL-004  | 1 | 208  | 1.0 | 8.0   | LP-EM-2    | 20A/208V/2P             | 2#12, 1#12G, 3/4" C | 20A/208V/2P WP TH TOGGLE | LOWER LEVEL GARAGE     | 1   |
| WH-36-LL-001  | 3 | 208  |     | 18kW  | LDP-1      | 70A/208V/3P             | 3#4, 1#10G, 1" C    | 100A/208V/3P             | WATER SERVICE ROOM 105 | 1   |
| DSS-36-UL-001 | 1 | 208  |     | 56W   | LP-2       | 20A/208V/2P             | 2#12, 1#12G, 3/4" C | 20A/208V/2P WP TH TOGGLE | ELECTRICAL ROOM 204    | 1   |
| DSS-36-4-002  | 1 | 208  |     | 56W   | LP-2       | 20A/208V/2P             | 2#12, 1#12G, 3/4" C | 20A/208V/2P WP TH TOGGLE | ELEV. EQUIP. ROOM 405  | 1   |
| CU-36-UL-001  | 1 | 208  |     | 25.0  | LP-2       | 40A/208V/2P             | 2#8, 1#10G, 3/4" C  | 60A/208V/3P WP           | UPPER LEVEL ON GRADE   | 1   |
| CU-36-UL-002  | 1 | 208  |     | 25.0  | LP-2       | 40A/208V/2P             | 2#8, 1#10G, 3/4" C  | 60A/208V/3P WP           | UPPER LEVEL ON GRADE   | 1   |
| EF-36-R-001   | 1 | 120  | 1/4 | 5.8   | LP-EM-1    | 20A/120V/1P             | 2#12, 1#12G, 3/4" C | 20A/120V/1P WP TH TOGGLE | ON ROOF                | 1   |
| EF-36-R-002   | 1 | 120  | 1/4 | 5.8   | LP-EM-1    | 20A/120V/1P             | 2#12, 1#12G, 3/4" C | 20A/120V/1P WP TH TOGGLE | ON ROOF                | 1   |
| UH-36-LL-001  | 1 | 208  |     | 5.0kW | LP-2       | 30A/208V/2P             | 2#10, 1#10G, 3/4" C | 30A/208V/2P TH TOGGLE    | ELEVATOR VESTIBULE 100 | 1   |
| UH-36-LL-002  | 1 | 208  |     | 1.9kW | LP-2       | 20A/208V/2P             | 2#12, 1#12G, 3/4" C | 20A/208V/2P TH TOGGLE    | EQUIPMENT ROOM 104     | 1   |
| UH-36-LL-003  | 1 | 208  |     | 1.9kW | LP-2       | 20A/208V/2P             | 2#12, 1#12G, 3/4" C | 20A/208V/2P TH TOGGLE    | WATER SERVICE ROOM 105 | 1   |
| UH-36-UL-004  | 1 | 208  |     | 5.0kW | LP-2       | 30A/208V/2P             | 2#10, 1#10G, 3/4" C | 30A/208V/2P TH TOGGLE    | ELEVATOR VESTIBULE 200 | 1   |
| UH-36-UL-005  | 1 | 208  |     | 1.9kW | LP-2       | 20A/208V/2P             | 2#12, 1#12G, 3/4" C | 20A/208V/2P TH TOGGLE    | STAIRWAY 1 SOUTH 203   | 1   |
| UH-36-UL-006  | 1 | 208  |     | 5.0kW | LP-2       | 30A/208V/2P             | 2#10, 1#10G, 3/4" C | 30A/208V/2P TH TOGGLE    | ELECTRICAL ROOM 204    | 1   |
| UH-36-UL-007  | 1 | 208  |     | 1.9kW | LP-2       | 20A/208V/2P             | 2#12, 1#12G, 3/4" C | 20A/208V/2P TH TOGGLE    | ELECTRICAL ROOM 206    | 1   |
| UH-36-3-008   | 1 | 208  |     | 5.0kW | LP-2       | 30A/208V/2P             | 2#10, 1#10G, 3/4" C | 30A/208V/2P TH TOGGLE    | ELEVATOR VESTIBULE 300 | 1   |
| UH-36-3-009   | 1 | 208  |     | 5.0kW | LP-2       | 30A/208V/2P             | 2#10, 1#10G, 3/4" C | 30A/208V/2P TH TOGGLE    | STAIRWAY 1 SOUTH 303   | 1   |
| UH-36-3-010   | 1 | 208  |     | 1.9kW | LP-2       | 20A/208V/2P             | 2#12, 1#12G, 3/4" C | 20A/208V/2P TH TOGGLE    | STORAGE ROOM 304       | 1   |
| UH-36-4-011   | 1 | 208  |     | 5.0kW | LP-2       | 30A/208V/2P             | 2#10, 1#10G, 3/4" C | 30A/208V/2P TH TOGGLE    | ELEVATOR VESTIBULE 400 | 1   |
| UH-36-4-012   | 1 | 208  |     | 1.9kW | LP-2       | 20A/208V/2P             | 2#12, 1#12G, 3/4" C | 20A/208V/2P TH TOGGLE    | STAIRWAY 1 SOUTH 403   | 1   |
| UH-36-4-013   | 1 | 208  |     | 1.9kW | LP-2       | 20A/208V/2P             | 2#12, 1#12G, 3/4" C | 20A/208V/2P TH TOGGLE    | STORAGE ROOM 404       | 1   |
| UH-36-4-014   | 1 | 208  |     | 1.9kW | LP-2       | 20A/208V/2P             | 2#12, 1#12G, 3/4" C | 20A/208V/2P TH TOGGLE    | ELEVATOR ROOM 405      | 1   |

1. COORDINATE ALL FIXTURE TYPES, QUANTITIES, AND LOCATIONS WITH VA PRIOR TO PURCHASING.
2. ALL LIGHTING FIXTURES SHALL BE FURNISHED WITH INLINE FUSE, EXCEPT EXIT SIGNS AND EM LIGHTING.
3. COORDINATE ALL FIXTURE COLORS, STYLES, AND MOUNTING WITH VA PRIOR TO PURCHASING.

 Department of  
Veterans Affairs



A

A

B

B

C

C

D

D

E

E

F

F

three inches = one foot

one and one half inches = one foot

one inch = one foot

three quarters inch = one foot

one half inch = one foot

three eighths inch = one foot

one quarter inch = one foot

one eighth inch = one foot

3/21/2017 11:42:18 AM

C:\Users\slaghi\Documents\650336-ARCH (CENTRAL)\agimgich.dwg

VA FORM 08-6231

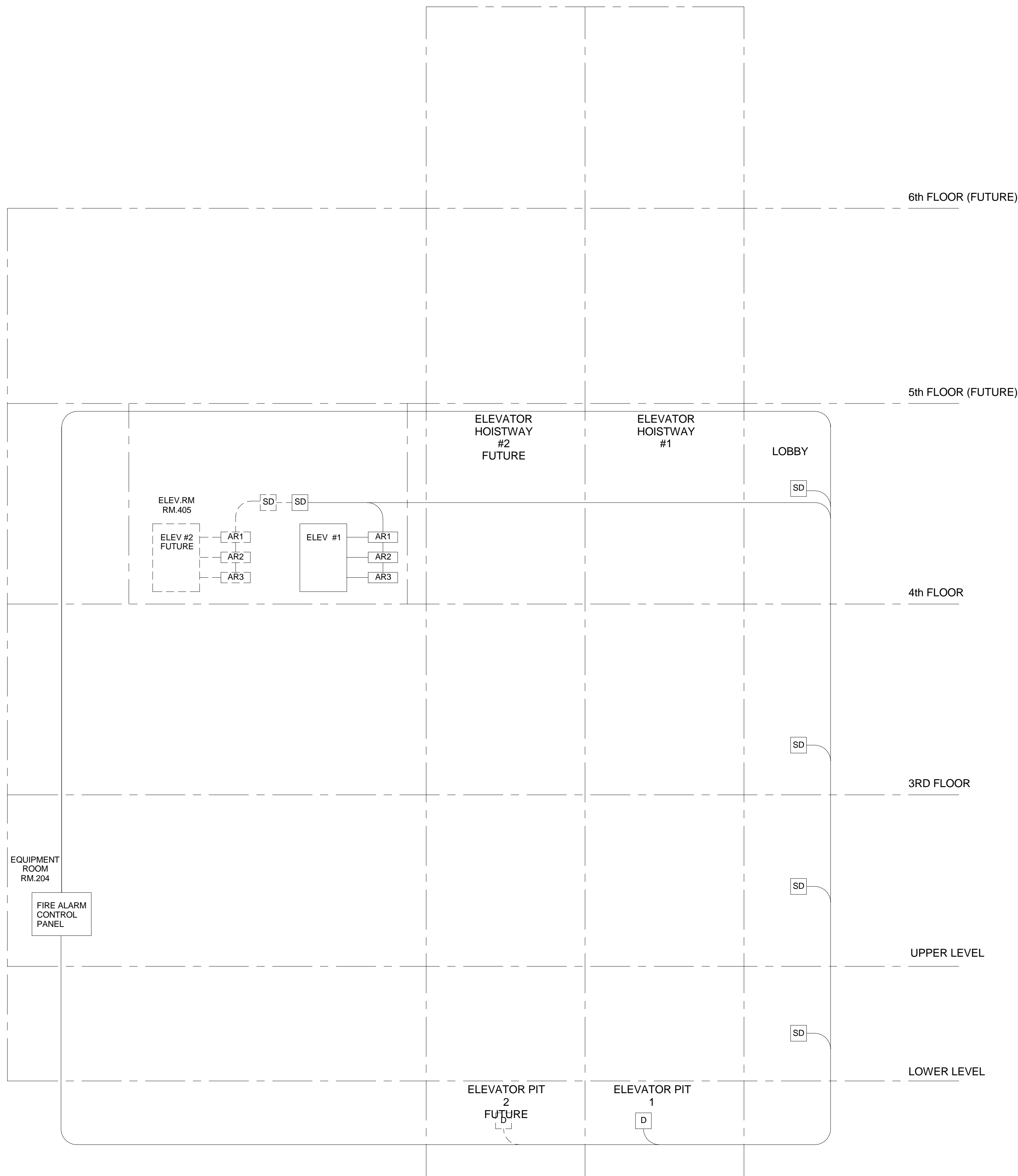
1 ELEVATOR RECALL CONTROL DIAGRAM  
NOT TO SCALE

NOTES

1. DIAGRAM APPLIES TO EACH ELEVATOR BANK OR GROUP CONTROLLER. COORDINATE WITH PLANS FOR QUANTITIES.
2. CONTRACTOR SHALL PROVIDE THREE (3) SETS OF DRY CONTACTS PER ELEVATOR GROUP CONTROLLER FOR THE FOLLOWING:  
a) MAIN FLOOR RECALL  
b) ALTERNATE FLOOR RECALL  
c) CAR LIGHT SIGNAL
3. EACH INDIVIDUAL DETECTION DEVICE IN EACH LOBBY AT EACH FLOOR SHALL, WHEN INITIATED, RECALL THE ELEVATORS IN ITS GROUP. ADDITIONALLY, EACH INDIVIDUAL DETECTION DEVICE IN EACH PORTION OF THE MACHINE ROOM SHALL, WHEN INITIATED RECALL ALL ELEVATORS HOUSED AND CONTROLLED FROM THE MACHINE ROOM.
4. ELECTRICAL CONTRACTOR SHALL PROVIDE ALL ELECTRONICS, PROGRAMMING, PARTS AND DRAWING SUBMITTALS REQUIRED TO PROVIDE AN ELEVATOR RECALL SIGNAL WIRING LOOP TO THE NEW SYSTEM. ANY ELECTRICAL POWER CIRCUITS REQUIRED FOR PROPOSED PANEL ADDITIONS, BOOSTER POWER SUPPLIES AND THE LIKE SHALL BE CONSIDERED WITHIN ELECTRICAL CONTRACTOR PROJECT BID SCOPE.

SYMBOLS:

- D HEAT DETECTOR  
SD SMOKE DETECTOR  
AR1 FIRE ALARM ADDRESSABLE CONTROL RELAY MODULE FOR RECALL TO DESIGNATED RECALL LOBBY.  
AR2 FIRE ALARM ADDRESSABLE CONTROL RELAY MODULE FOR RECALL TO ALTERNATE RECALL LOBBY.  
AR3 FIRE ALARM ADDRESSABLE CONTROL RELAY MODULE FOR ILLUMINATION OF HAT LIGHTS IN CARS.



CONSULTANTS:



18 TREMON STREET  
SUITE 300  
BOSTON, MASSACHUSETTS  
02108  
TELEPHONE: 617.778.9882  
www.desman.com

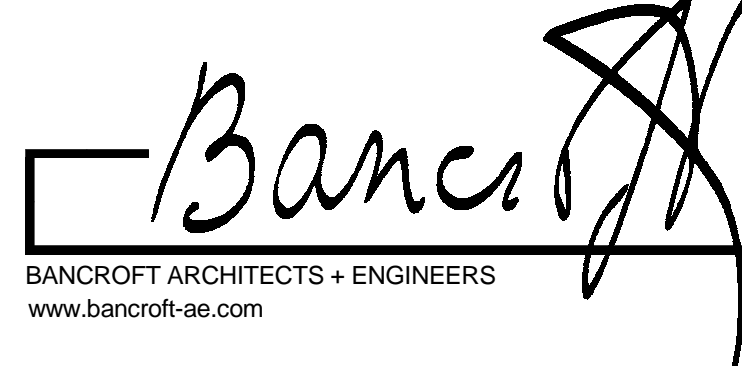


1 CEDAR STREET  
SUITE 400  
PROVIDENCE, RHODE ISLAND  
02903  
TELEPHONE: 401.272.8100  
www.vhb.com

KEYPLAN:



ARCHITECT/ENGINEERS:



360 Bloomfield  
Windsor Locks, Connecticut 06096  
T: 860.897.6368

Bancroft-AE Project No. 14-113

Drawing Title  
ELECTRICAL DETAILS

Approved: Project Director  
-  
VAPAHCS PLANNING AND ENGINEERING

Project Title  
NEW PARKING GARAGE

Location  
PROVIDENCE, RHODE ISLAND 02908

Date  
03-01-2017

Checked  
LF

Drawn  
YY

Project Number  
650-336

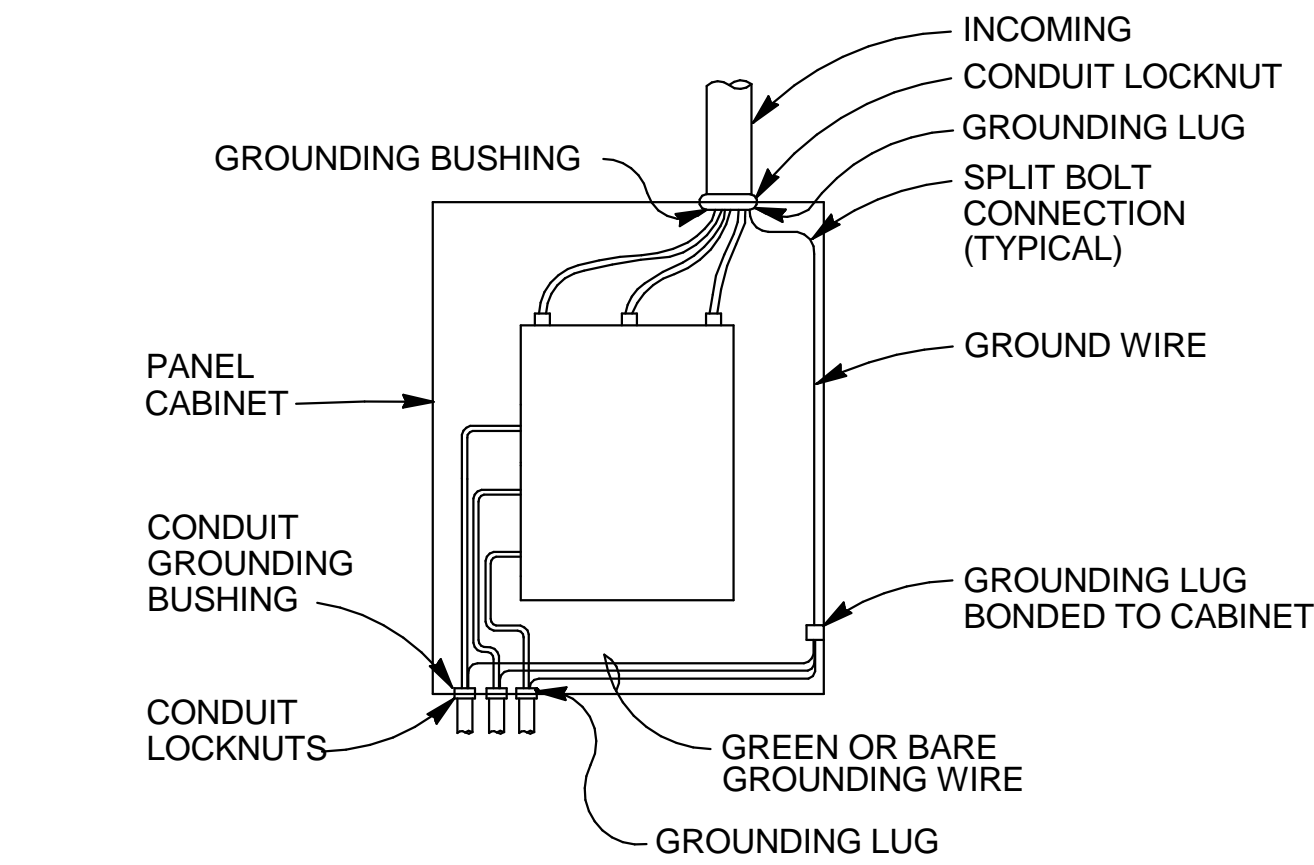
Building Number  
36

Drawing Number  
E-801

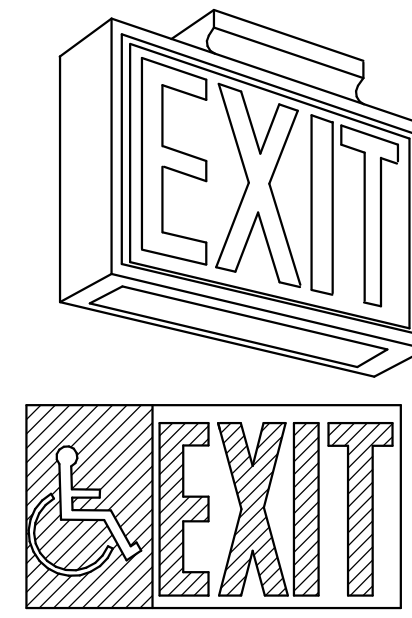
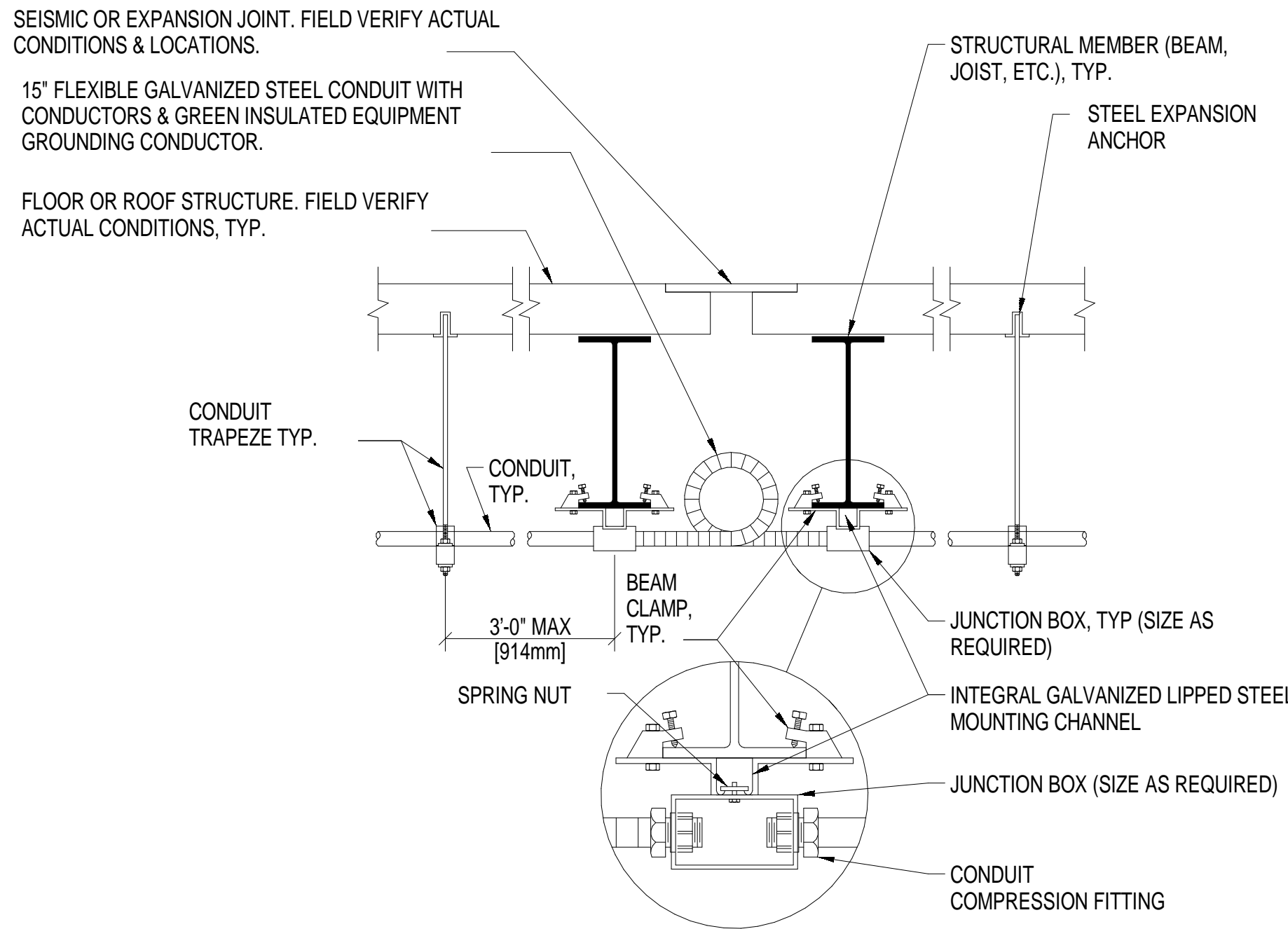
Office of  
Construction  
and Facilities  
Management







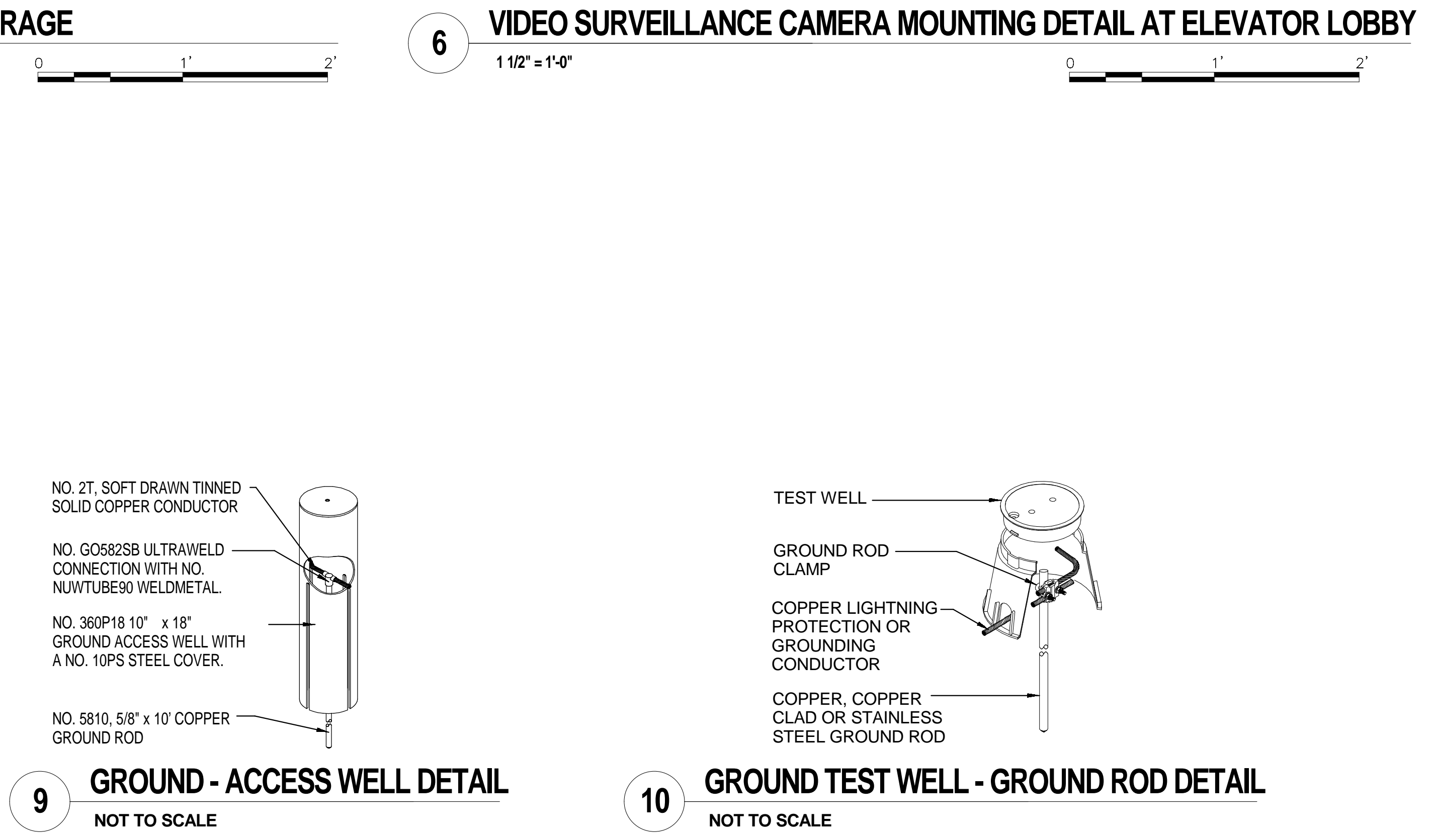
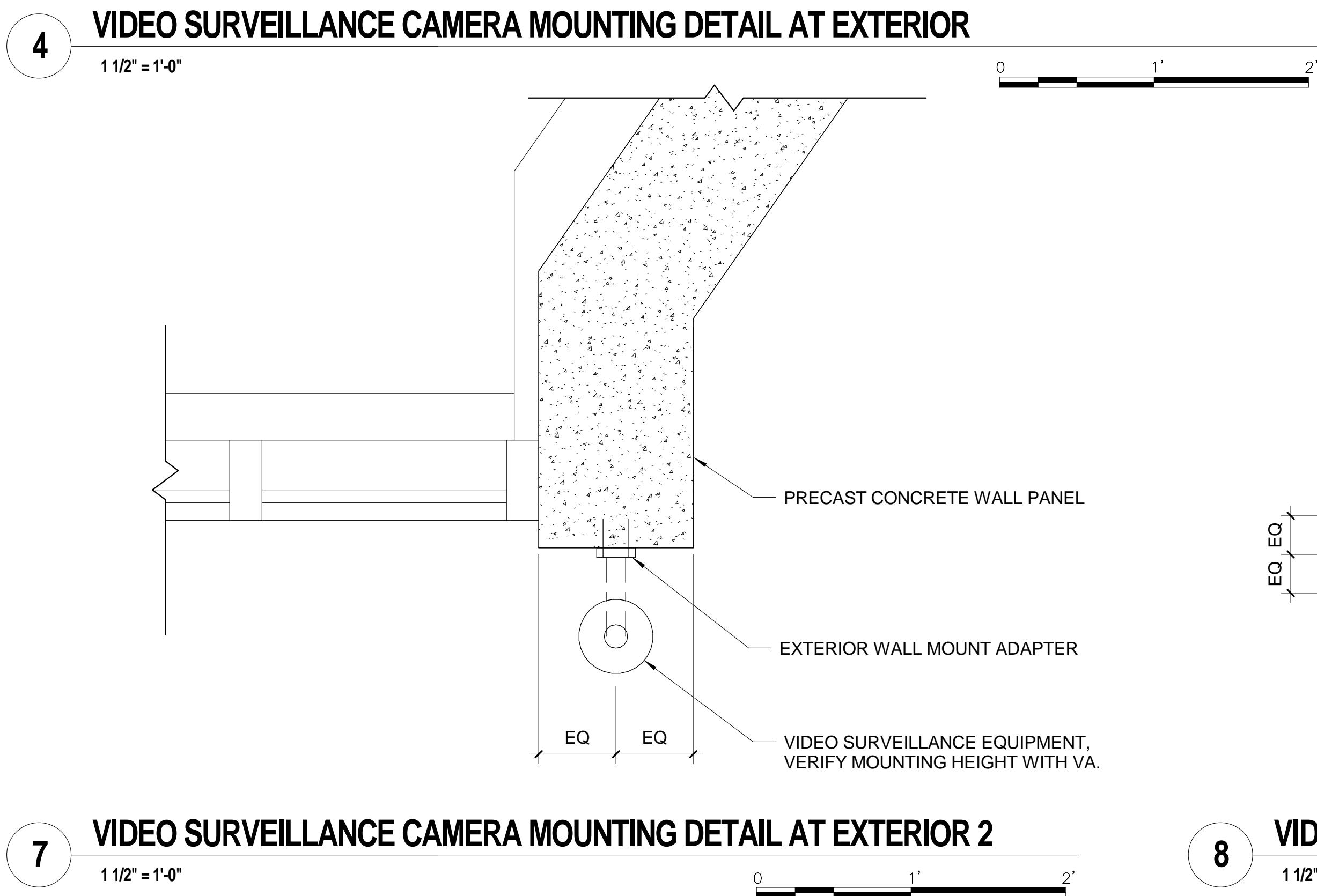
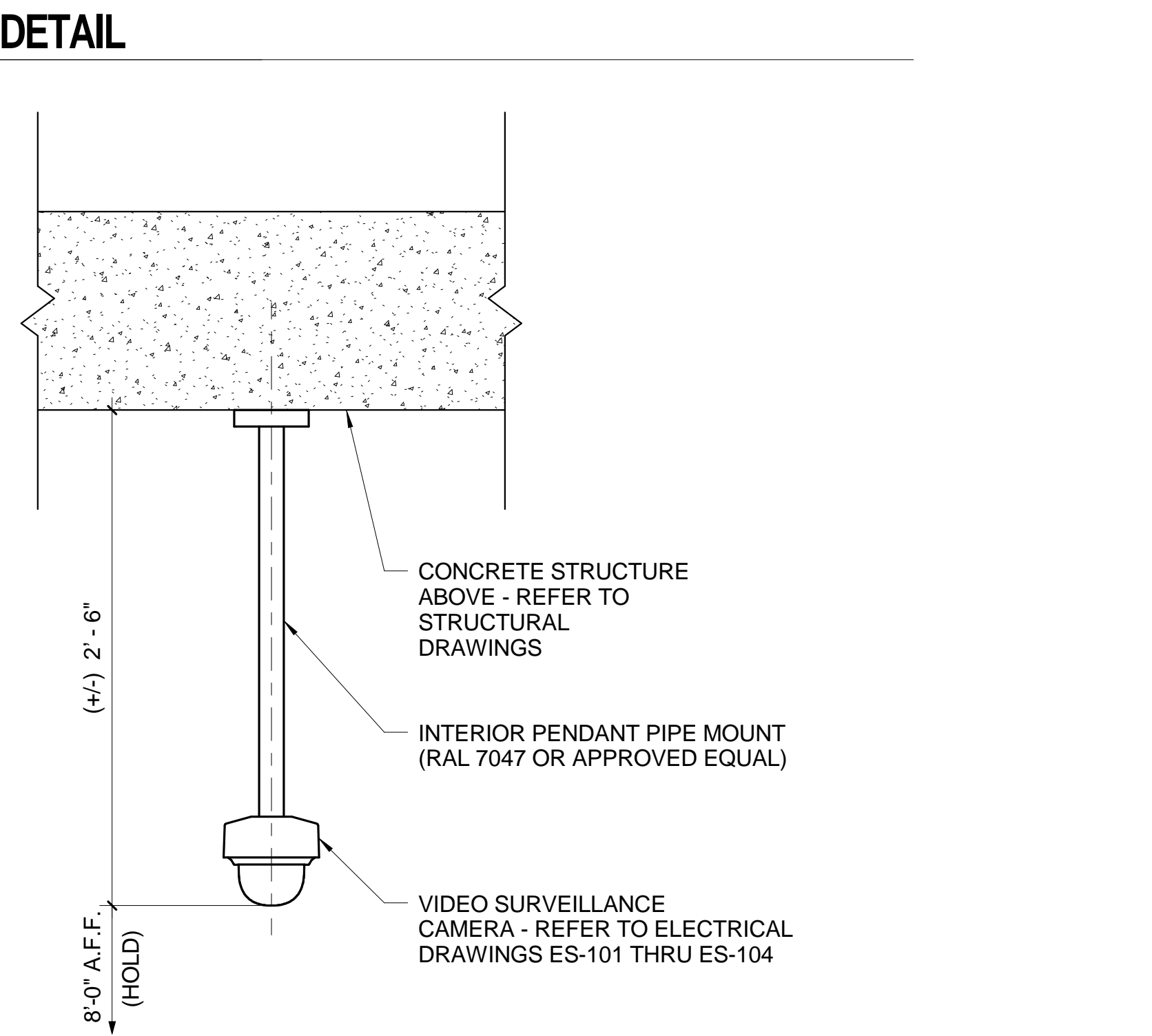
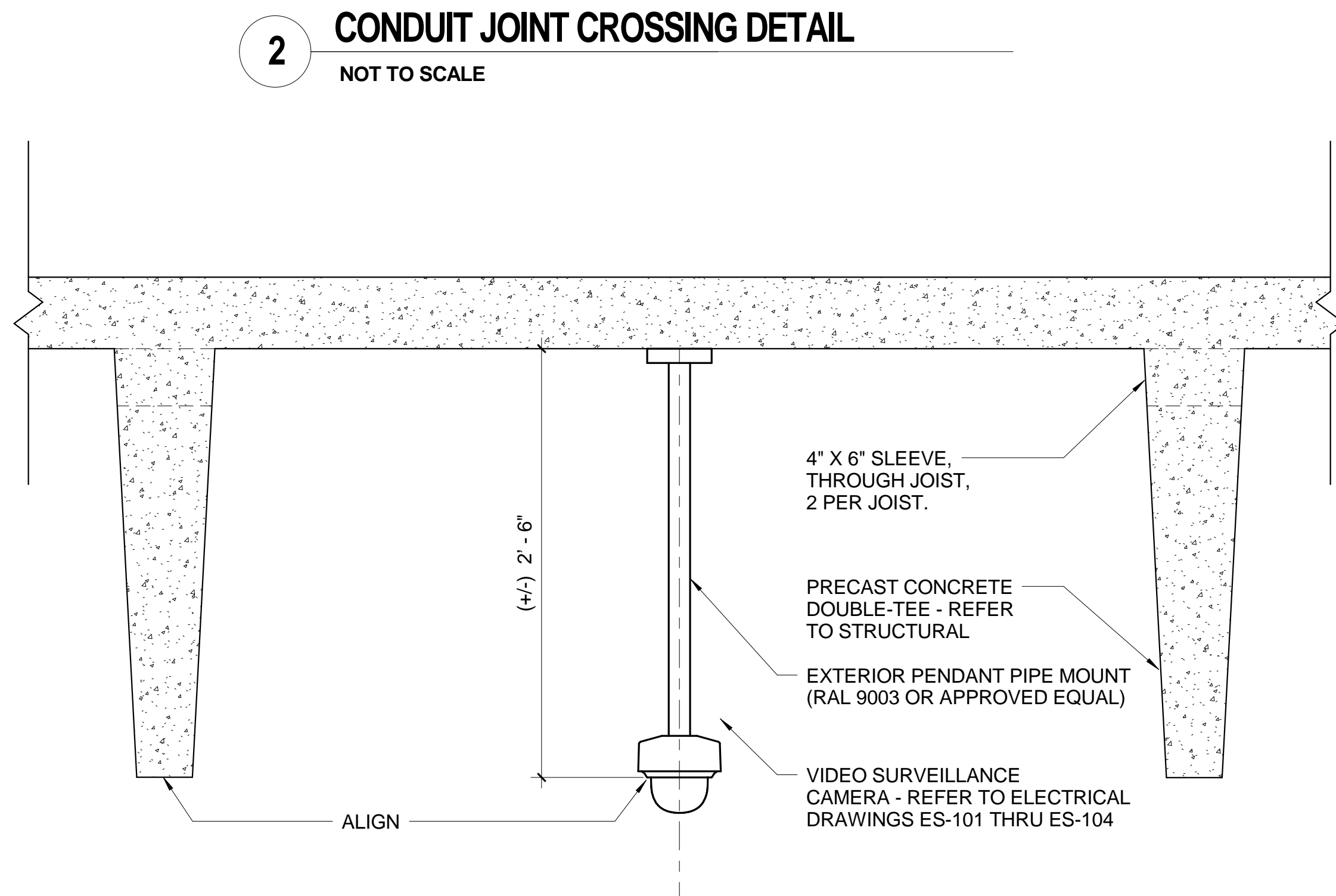
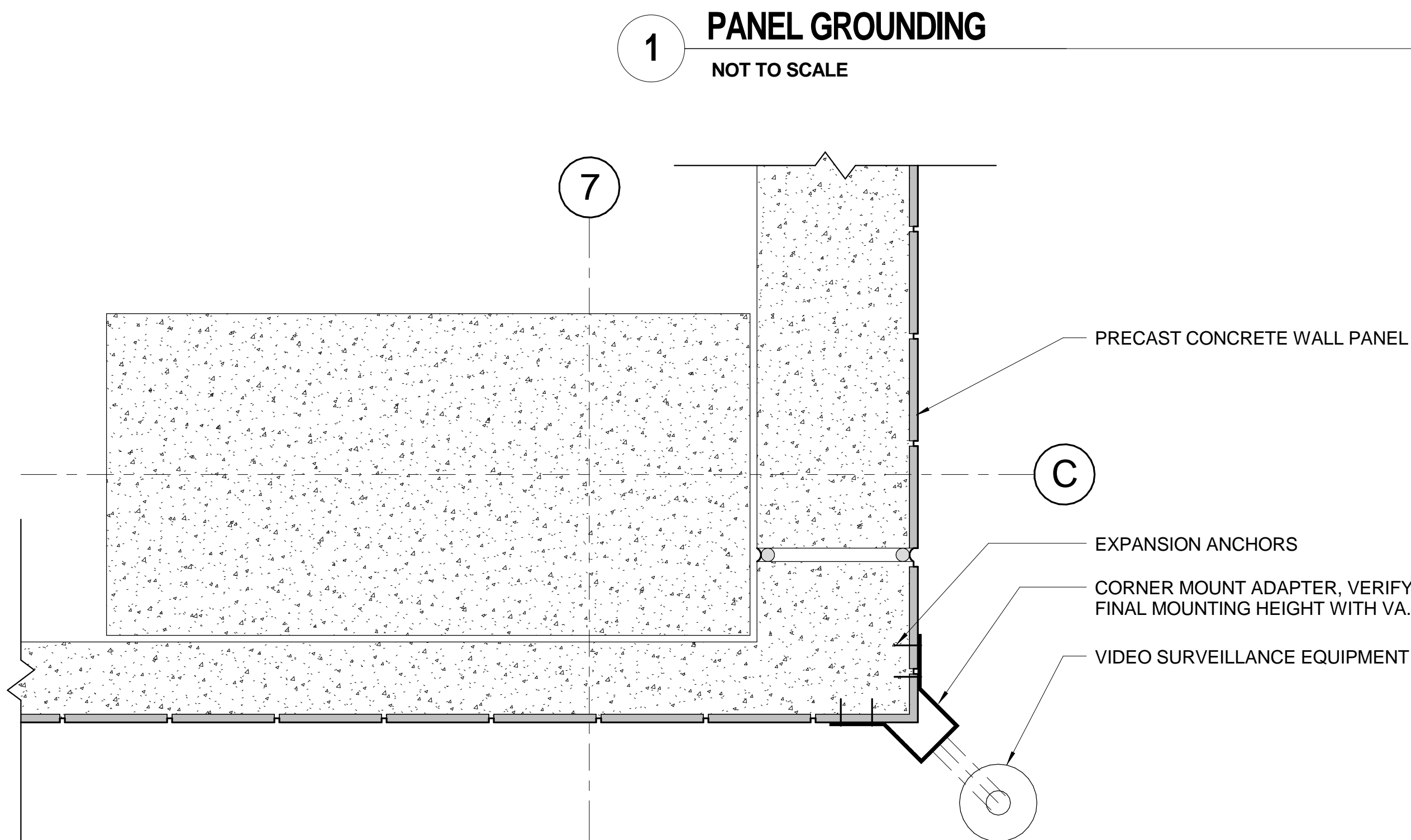
- NOTES:
1. ALL WIRES TO BE NEATLY LACED.
  2. AT THE POINT OF ATTACHMENT OF THE GROUNDING LUG TO THE CABINET, THE SURFACES SHALL BE SCRAPED FREE OF PAINT AND THOROUGHLY CLEANED TO INSURE PROPER BONDING.
  3. NEUTRAL CONDUCTOR NOT SHOWN FOR CLARITY.



#### LUMINAIRE REQUIREMENTS

1. LETTERS SHALL BE 150 mm TALL WITH 20 mm STROKES FORMED BY A STENCIL FACE.
2. PROVIDE RED FIBERGLASS PANELL BEHIND STENCIL FACE.
3. PROVIDE LED LAMPS.
4. PROVIDE DOWN LIGHT PANEL IN FIXTURE.
5. PROVIDE ILLUMINATED ARROWS AS INDICATED.
6. PROVIDE SINGLE OR DOUBLE FACE AS INDICATED.
7. PROVIDE CEILING END WALL, BACK WALL OR PENDANT MOUNTING AS INDICATED.
8. ALL UNITS SHALL HAVE A DAMP OR WET U.L. LABEL AS APPROPRIATE AND SHALL NOT BE CONSTRUCTED OF STEEL.
9. PROVIDE INTERNAL PROVISIONS FOR GROUNDING.
10. PROVIDE INTERNATIONAL SYMBOL OF ACCESS ON SIGN WHEN INDICATED.

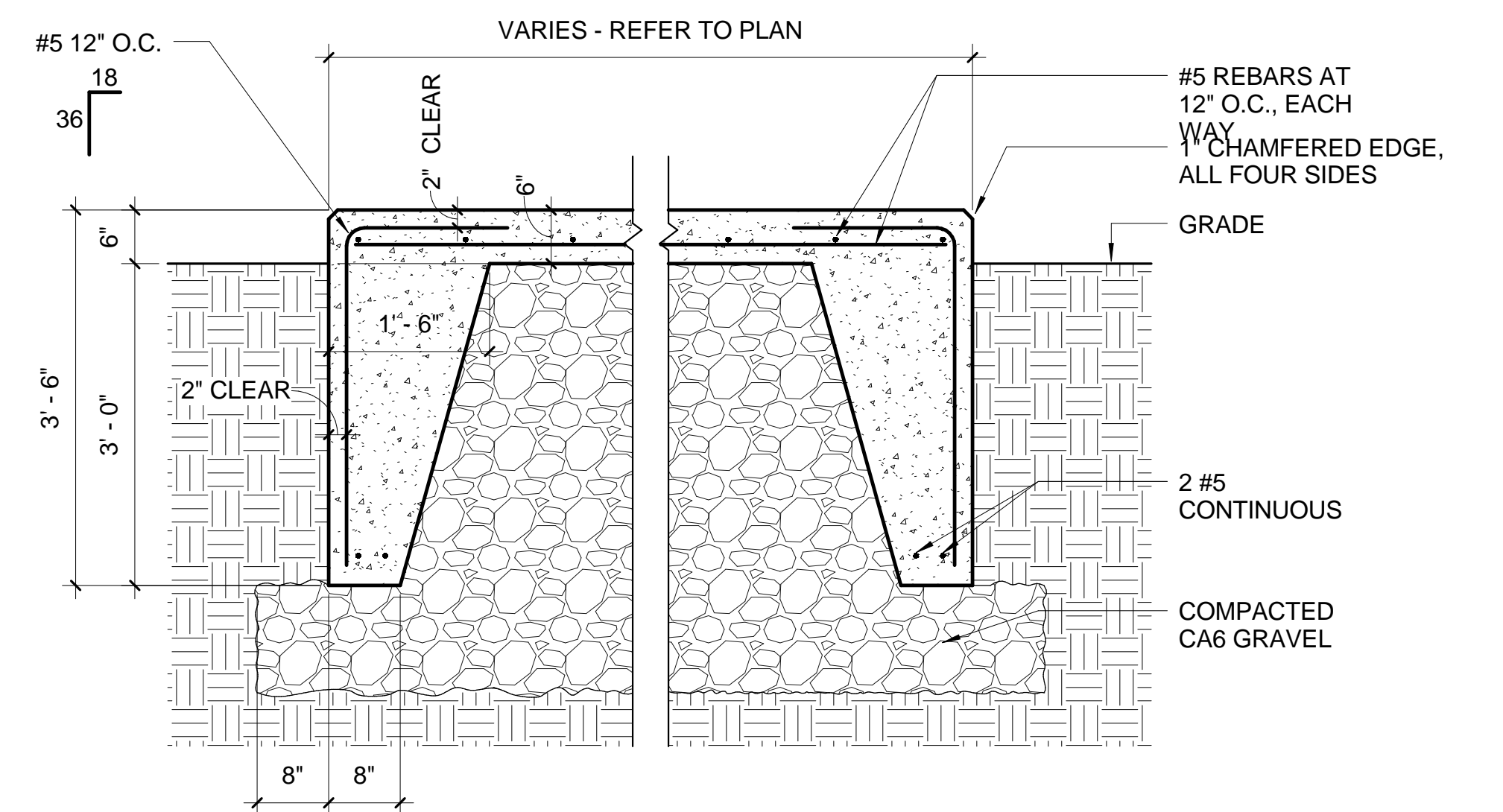
TYPE A - ALUMINUM OR PAINTED STEEL HOUSING AND STENCIL FACE. (SEE NOTE 8.)  
TYPE B - PLASTIC HOUSING ENCLOSED IN POLYCARBONATE WITH STENCIL ON INSIDE OF POLYCARBONATE HOUSING. (SEE NOTE 8.)



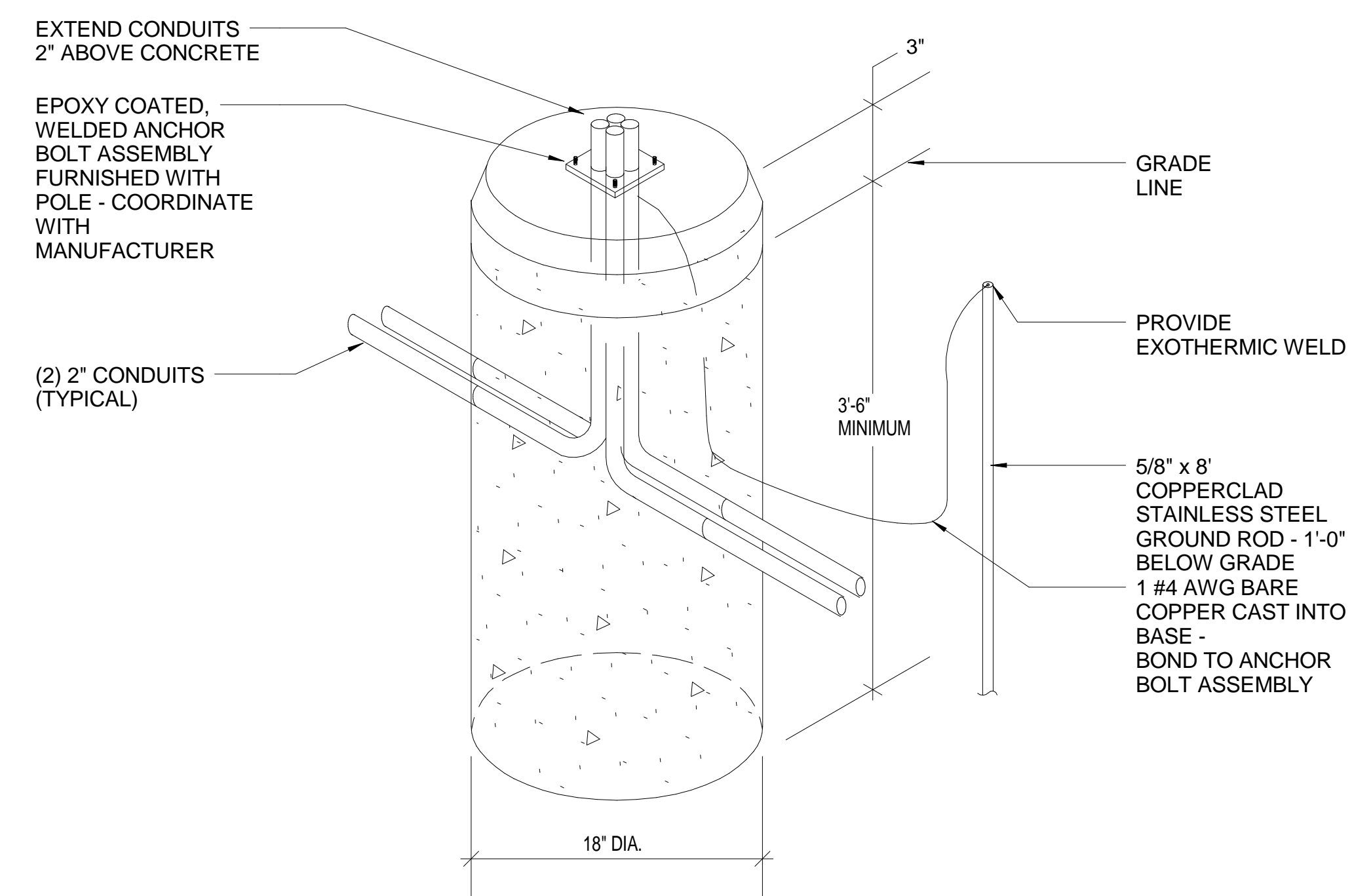
#### GROUND TEST WELL - GROUND ROD DETAIL

|   |  |   |  |              |  |  |  |   |  |  |  |  |  |   |  |
|---|--|---|--|--------------|--|--|--|---|--|--|--|--|--|---|--|
| ISSUED FOR CONSTRUCTION DOCUMENTS<br>100% CONSTRUCTION DOCUMENT SUBMITTAL<br>100% CONSTRUCTION DOCUMENT SUBMISSION<br>60% CONSTRUCTION DOCUMENT SUBMISSION<br>30% SCHEMATIC DESIGN SUBMISSION<br>Revisions: |  | CONSULTANTS:<br><b>DESMAN</b><br>Design Management<br>18 TREMON STREET<br>SUITE 300<br>BOSTON, MASSACHUSETTS 02108<br>TELEPHONE: 617.778.9882<br>www.desman.com |  | KEYPLAN:<br> |  | ARCHITECT/ENGINEERS:<br><b>Bancroft</b><br>BANCROFT ARCHITECTS + ENGINEERS<br>www.bancroft-ae.com<br>360 Bloomfield<br>Windsor Locks, Connecticut 06096<br>T: 860.897.6368<br>Bancroft-AE Project No. 14-113 |  | Drawing Title<br><b>ELECTRICAL DETAILS</b><br>Approved: Project Director<br>-<br>VAPAHCS PLANNING AND ENGINEERING |  | Project Title<br><b>NEW PARKING GARAGE</b><br>Location<br>PROVIDENCE, RHODE ISLAND 02908<br>Date<br>03-01-2017 |  | Project Number<br>650-336<br>Building Number<br>36<br>Drawing Number<br><b>E-802</b><br>Checked<br>LF<br>Drawn<br>AB |  | Office of<br>Construction<br>and Facilities<br>Management<br> |  |
|---|--|---|--|--------------|--|--|--|---|--|--|--|--|--|---|--|





**4 TYPICAL CONCRETE PAD DETAIL**  
3/4" = 1'-0"



**7 UNIT CONCRETE BASE DETAIL**  
NOT TO SCALE

Office of  
Construction  
and Facilities  
Management

 Department of  
Veterans Affairs