

three inches = one foot

one and one half inches = one foot

one inch = one foot

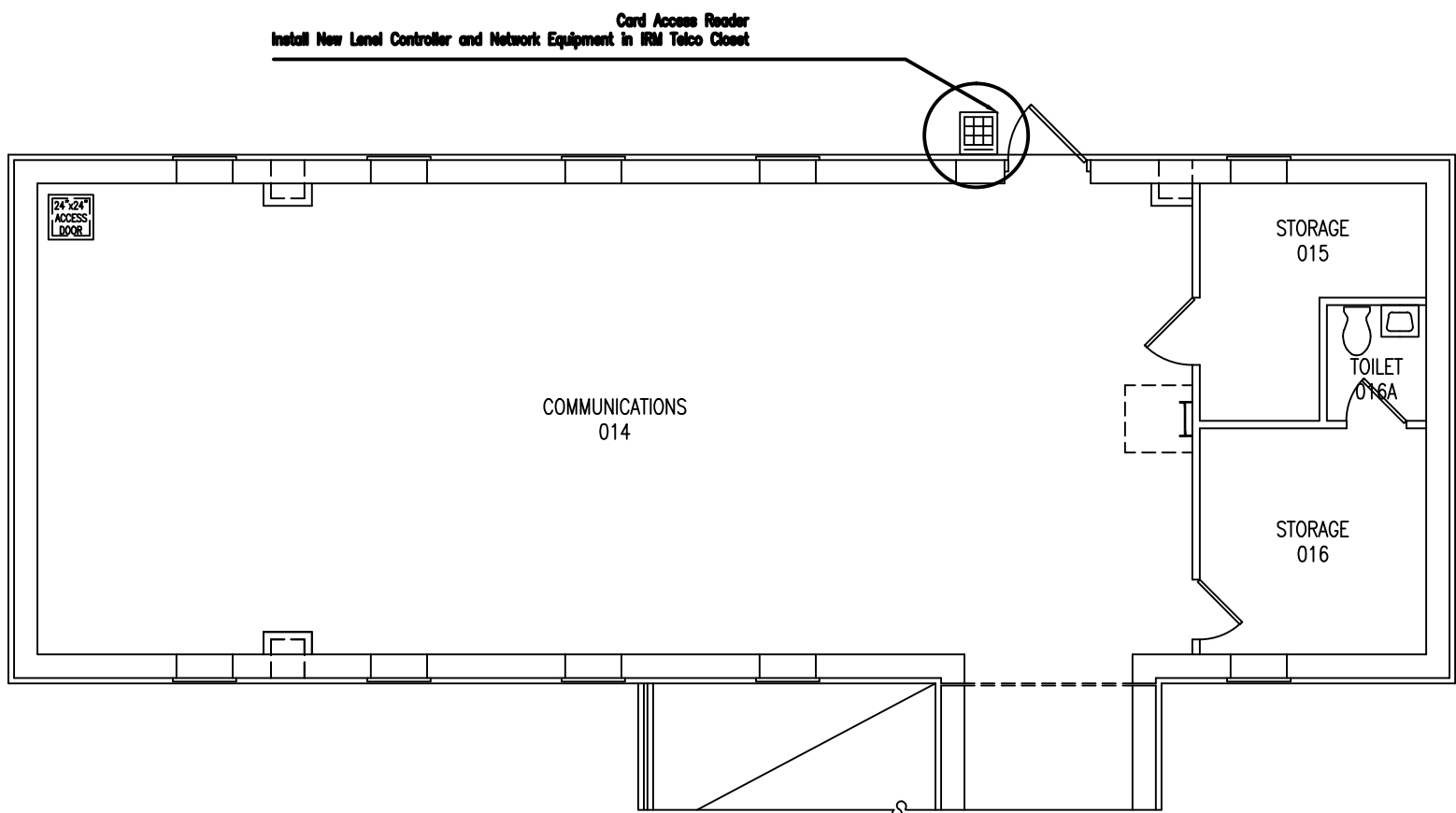
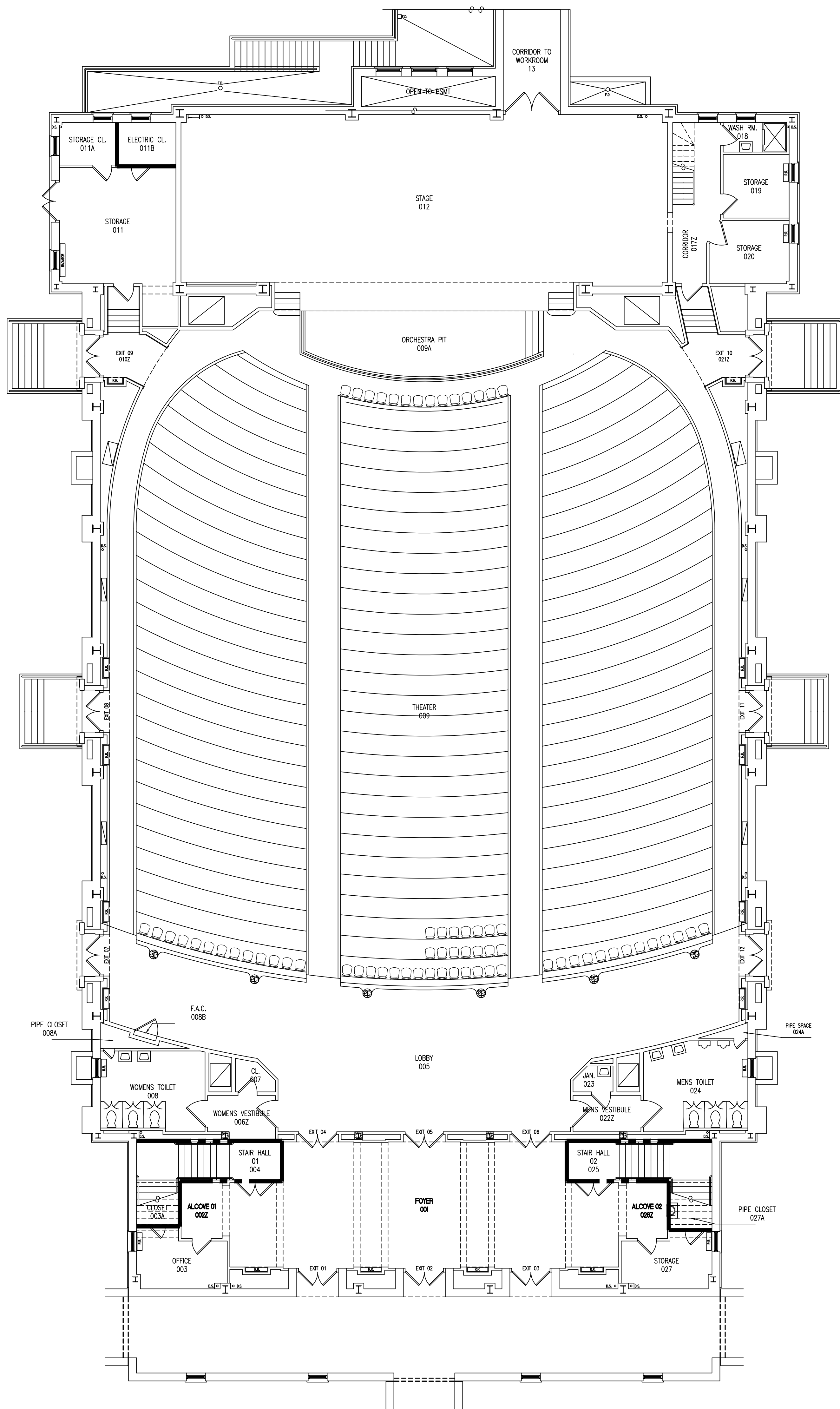
three quarters inch = one foot

one half inch = one foot

three eighths inch = one foot

one quarter inch = one foot

one eighth inch = one foot



NOTES

- NOTE 1: CONTRACTOR WILL USE PANASONIC NETWORK CAMERAS MODEL WV-NW 502S WHEN REPLACING EXISTING CAMERAS AND INSTALLING NEW CAMERAS.
- NOTE 2: CONTRACTOR WILL USE PANASONIC NETWORK PTZ MODEL WV-NW964 WHEN INSTALLING OUTDOOR CAMERAS.
- NOTE 3: CONTRACTOR WILL USE PANASONIC NDR MODEL WJ-ND400K/8000T2 (8 TERABYTE NETWORK RECORDER).
- NOTE 4: CONTRACTOR WILL USE CAT6 NETWORK CABLE.
- NOTE 5: DO NOT USE THE STAIRWELL TO RUN VERTICAL CONDUIT FROM FLOOR TO FLOOR.
- NOTE 6: ALL WIRING INSIDE STAIRWELLS MUST BE INSTALLED IN CONDUIT.
- NOTE 7: ALL WALL PENETRATIONS THROUGH FIRE RATED BARRIERS WILL BE FIRE STOPPED.
- NOTE 8: VERTICAL CONDUIT RISER MUST BE RUN IN MECHANICAL ROOMS.
- NOTE 9: ALL CAT6 CABLE RUNS WILL BE INSIDE THE CABLE TRAY.
- NOTE 10: CONTRACTOR WILL USE PANASONIC COMPACT NETWORK CAMERA (WV-SW155) FOR ELEVATOR.
- NOTE 11: COORDINATE LOCATION OF ALL CAMERAS WITH COTR PRIOR TO INSTALLATION.
- NOTE 12: CONTRACTOR IS RESPONSIBLE FOR DEMO OF EXISTING CAMERAS AND ANY ASSOCIATED PATCHING, REPAIR, CEILING TILE REPLACEMENT AND ASSOCIATED ANCILLARY WORK.
- NOTE 13: CONTRACTOR WILL INSTALL NEW ACCESS CARD READERS, KEY LOCKBOXES, AND SAFES THAT WILL COMMUNICATE VIA THE EXISTING LENE NETWORK.

SYMBOLS

- PANASONIC NETWORK CAMERA (WV-NW 502S)
- PANASONIC PTZ NETWORK CAMERA (WV-NW964)
- Access Card Reader W/Keypad
- Gun Safe
- Key Lockbox
- 1 HR FIRE RATED BARRIER
- 2 HR FIRE RATED BARRIER

Revisions		Date		CONSULTANTS:		ARCHITECT/ENGINEERS:		NORTH: 		APPROVED:		APPROVED:		Drawing Title Architectural Plan Ground Floor NTS		Project Title Card Access, Safe, Keylock Box, and Cameras		Project Number Building(s) Number 02		Engineering Service Department of Veterans Affairs	
										APPROVED:		APPROVED:		Approved Director, VAHVCS		Location Montrose, New York		Drawing Number TY-12			
										APPROVED:		APPROVED:		Approved Chief of Engineering		Date 03/15/2012		Checked JP			
										APPROVED:		APPROVED:				Drawn JP		Sheet 2 of 6			