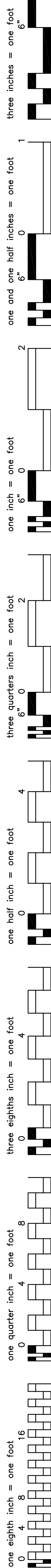
[illegible]



GENERAL NOTES:

- 1 **CONCRETE VALLEY GUTTER** N.T.S.

NOTES:

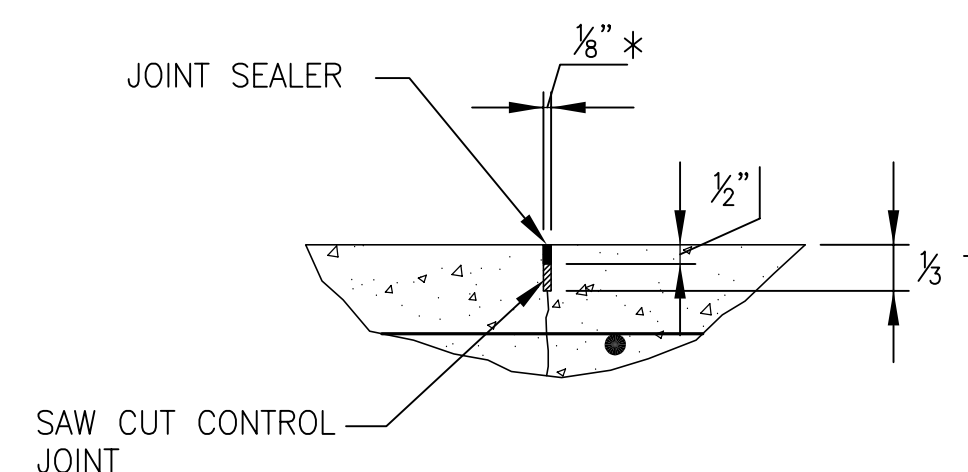
- 
- #3 @ 24" O.C.E.W.
- 4"
- 4"
- COMPACTED SUBGRADE (AS SPECIFIED)
- 4" TXDOT ITEM 247 BASE MATERIAL. COMPACT BASE TO AT LEAST 100% MAX DRY DENSITY PER ASTM D-698

2 **SIDEWALK** N.T.S.

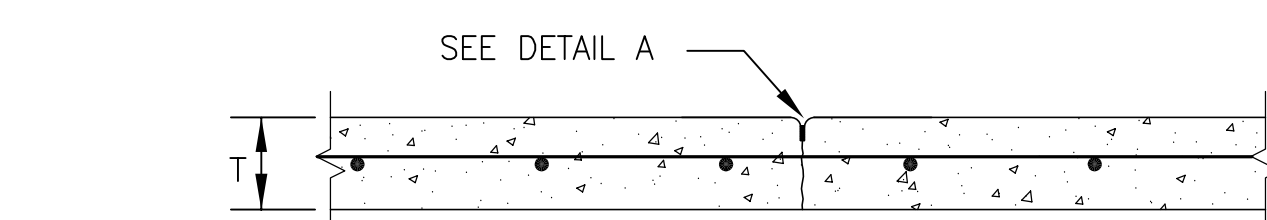
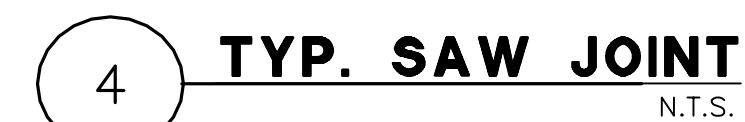


NOTES.

- 3 CURB EXPANSION JOINT DOWEL DETAIL N.T.S.



**DETAIL - A**



9 TYP. TOOL JOINT FOR SIDEWALKS  
N.T.S.



**PBS**  
 TIME INC. #1-674  
 1000 BRIDGE PLAZA PARK, SUITE 200  
 AUSTIN, TEXAS 78701 - (512) 327-6840


**CEI**  
7430 Greenville Avenue  
Dallas, Texas 75231  
Registration No. F-001722

**CAMPOS  
ENGINEERING, Inc.  
CONSULTING ENGINEERS**  
(214) 696-6291  
(214) 361-6296 (F)  
CEI Project #0205

**Terracon**  
Consulting Engineers & Scientists  
Texas Registration No. F-3272  
11555 Clay Road Houston, TX 77034  
Ph (713) 802-0690 Ph (713) 595-3205  
Geotechnical / Environmental / Construction Materials / Facilities Engineers

**CORRIGAN CONSULTING, INC.**  
12000 Aerospace Ave., Suite 450  
Houston, TX 77034  
281922.4766

Approved: Project Director

	Location H
	Date

ISSUE 1 OF 1	
Drawing Number	L-200

ilities  
ment

