

three inches = one foot

one and one half inches = one foot

one inch = one foot

three quarters inch = one foot

one half inch = one foot

three eighth inch = one foot


one quarter inch = one foot

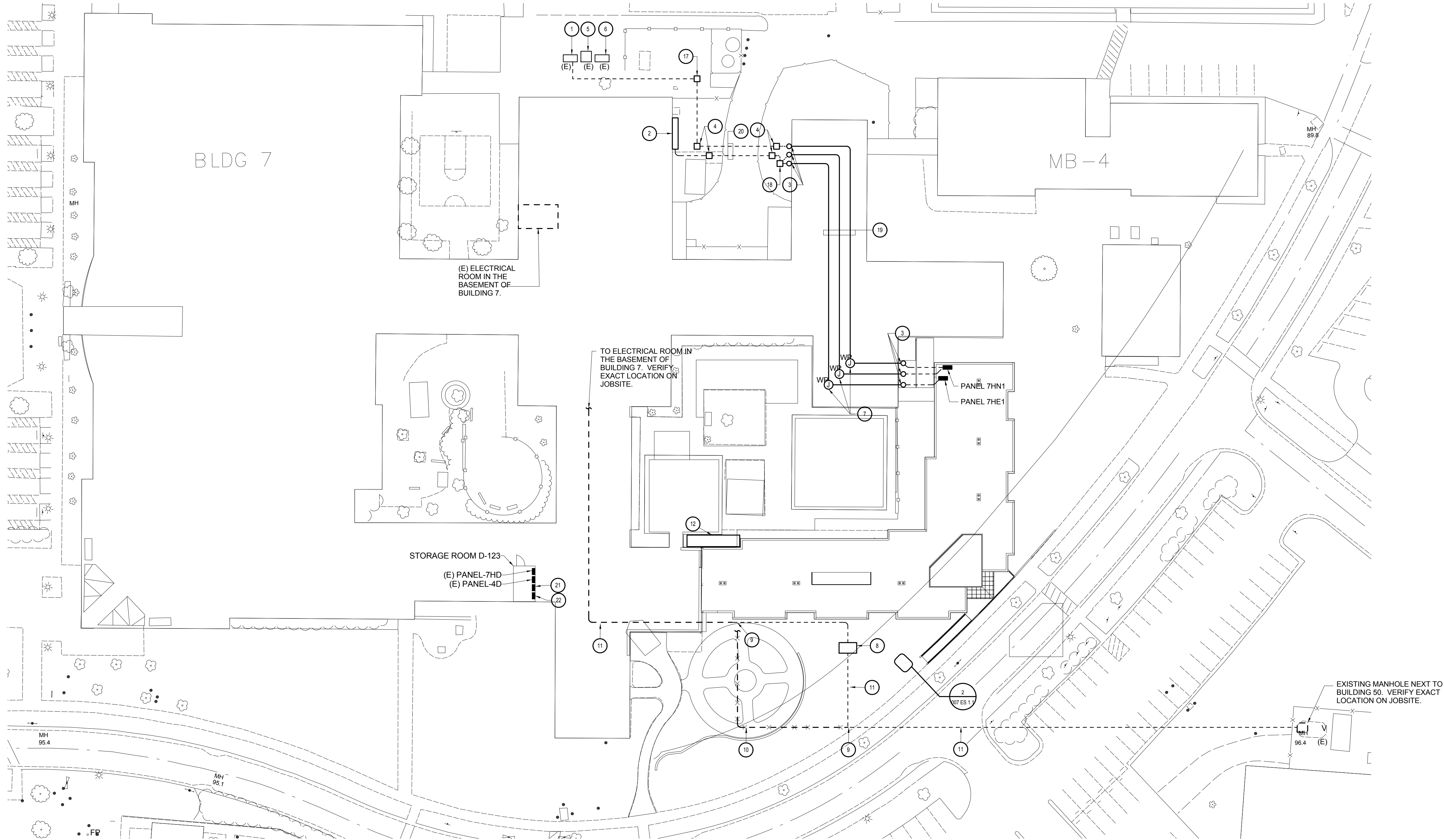
one eighth inch = one foot

GENERAL NOTES:

1. CONDUIT RUNS ARE DIAGRAMATIC. IT IS THE CONTRACTORS RESPONSIBILITY TO VERIFY BUILDING CONDITION AND POSSIBLE ROUTES, AND PROVIDE A J-BOX/PULL-BOX AS NECESSARY SO THAT EACH CONDUIT RUN SHALL NOT EXCEED 14 90° TURNS PER NEC. FOR FEEDER SIZES, SEE SINGLE LINE DIAGRAMS.
2.

KEYED NOTES:

 Drawing for reference only to project layout



1 POWER - SITE PLAN
007 ES 1.1 SCALE: 1/32" = 1'-0"

CONSTRUCTION DOCUMENTS
FULLY SPRINKLERED

CONSULTANTS:		ARCHITECT/ENGINEERS:		Drawing Title POWER SITE PLAN		Project Title VA Palo Alto Healthcare System Spinal Cord Injury Replacement Unit		Project Number 640-17-912		Office of Facilities Managment
								Building Number 007		
				Approved Project Director		Location 3801 Miranda Avenue, Palo Alto		Drawing Number		
				Date:		Date		Checked		
								Dwg. of.		

three inches = one foot

one and one half inches = one foot

one inch = one foot

three quarters inch = one foot

one half inch = one foot

three eighth inch = one foot

one quarter inch = one foot

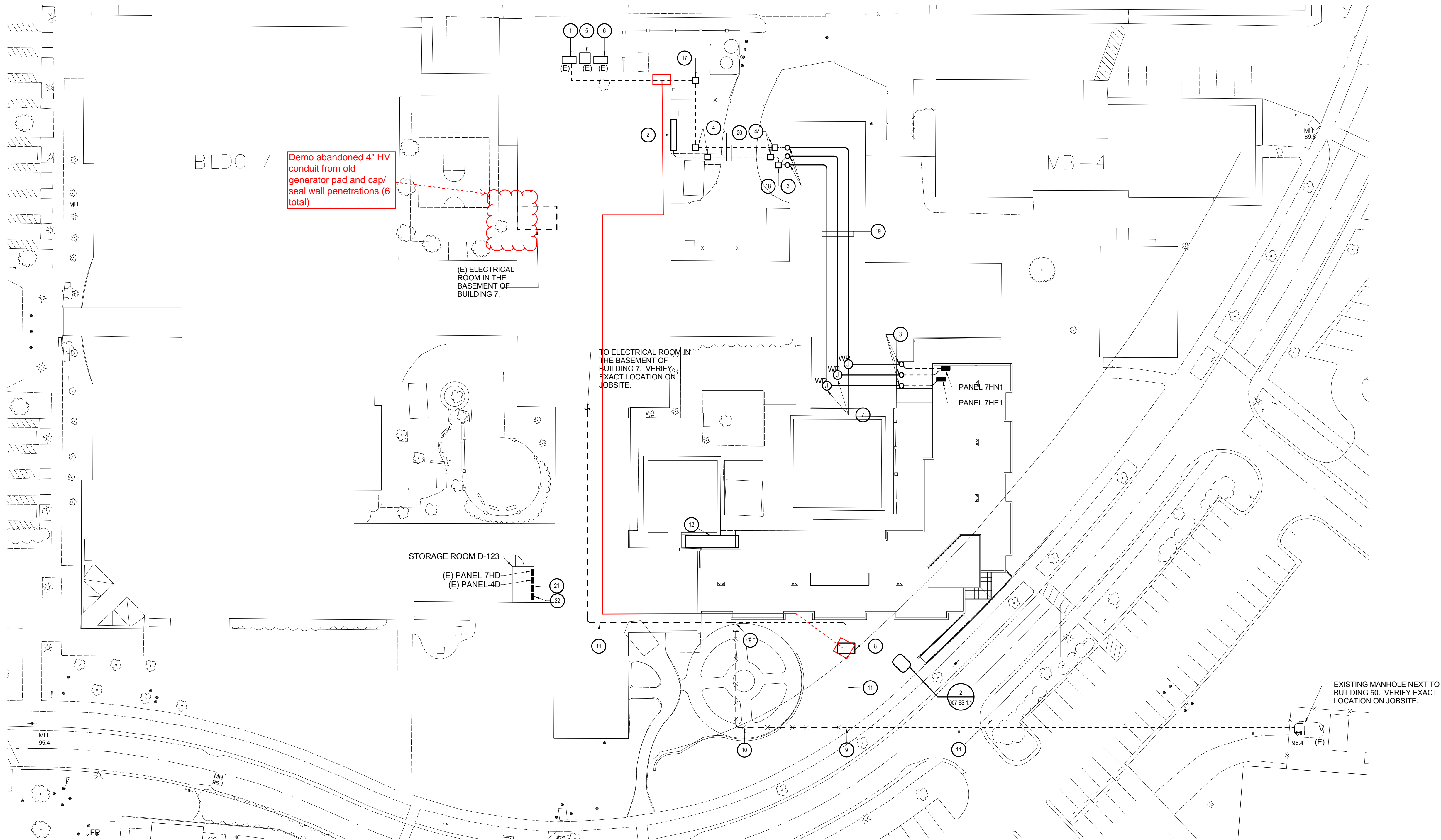
one eighth inch = one foot

GENERAL NOTES:

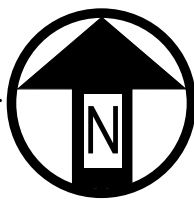
1. CONDUIT RUNS ARE DIAGRAMATIC. IT IS THE CONTRACTORS RESPONSIBILITY TO VERIFY BUILDING CONDITION AND POSSIBLE ROUTES, AND PROVIDE A J-BOX/PULL-BOX AS NECESSARY SO THAT EACH CONDUIT RUN SHALL NOT EXCEED 14 90° TURNS PER NEC. FOR FEEDER SIZES, SEE SINGLE LINE DIAGRAMS.
2.

KEYED NOTES:

○ Drawings for reference to project layout only



1 POWER - SITE PLAN
007 ES 1.1 SCALE: 1/32" = 1'-0"



CONSTRUCTION DOCUMENTS

CONSULTANTS:		ARCHITECT/ENGINEERS:		Drawing Title POWER SITE PLAN		Project Title VA Palo Alto Healthcare System Spinal Cord Injury Replacement Unit		Project Number 640-17-912		Office of Facilities Managment
				Approved Project Director		Building Number 007		Drawing Number		
				Date:		3801 Miranda Avenue, Palo Alto		Dwg. of.		

three inches = one foot

one and one half inches = one foot

one inch = one foot

three quarters inch = one foot

one half inch = one foot

three eighth inch = one foot

one quarter inch = one foot

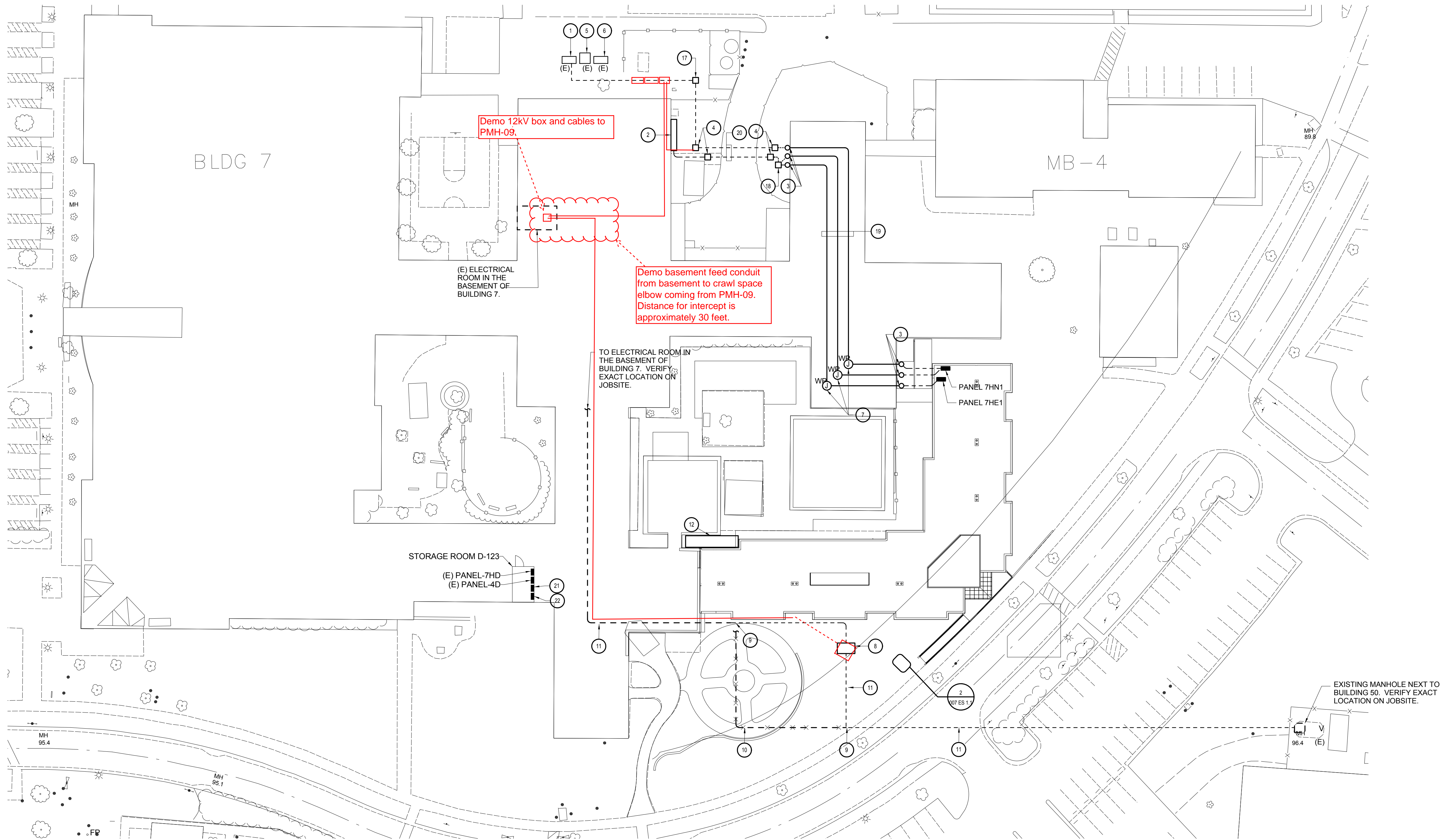
one eighth inch = one foot

GENERAL NOTES:

1. CONDUIT RUNS ARE DIAGRAMATIC. IT IS THE CONTRACTORS RESPONSIBILITY TO VERIFY BUILDING CONDITION AND POSSIBLE ROUTES, AND PROVIDE A J-BOX/PULL-BOX AS NECESSARY SO THAT EACH CONDUIT RUN SHALL NOT EXCEED 4 90° TURNS PER NEC. FOR FEEDER SIZES, SEE SINGLE LINE DIAGRAMS.
2.

KEYED NOTES:

- 1 Drawings for reference to project layout only



1 POWER - SITE PLAN
007 ES 1.1 SCALE: 1/32" = 1'-0"

CONSTRUCTION DOCUMENTS
FULLY SPRINKLERED

CONSULTANTS:

ARCHITECT/ENGINEERS:

Drawing Title POWER SITE PLAN
Approved Project Director
Date: April 1, 2008

Project Title VA Palo Alto Healthcare System Spinal Cord Injury Replacement Unit		
Location 3801 Miranda Avenue, Palo Alto		
Date	Checked	Drawn

Project Number 640-17-912
Building Number 007
Drawing Number
Dwg. of.

Office of
Facilities
Management

