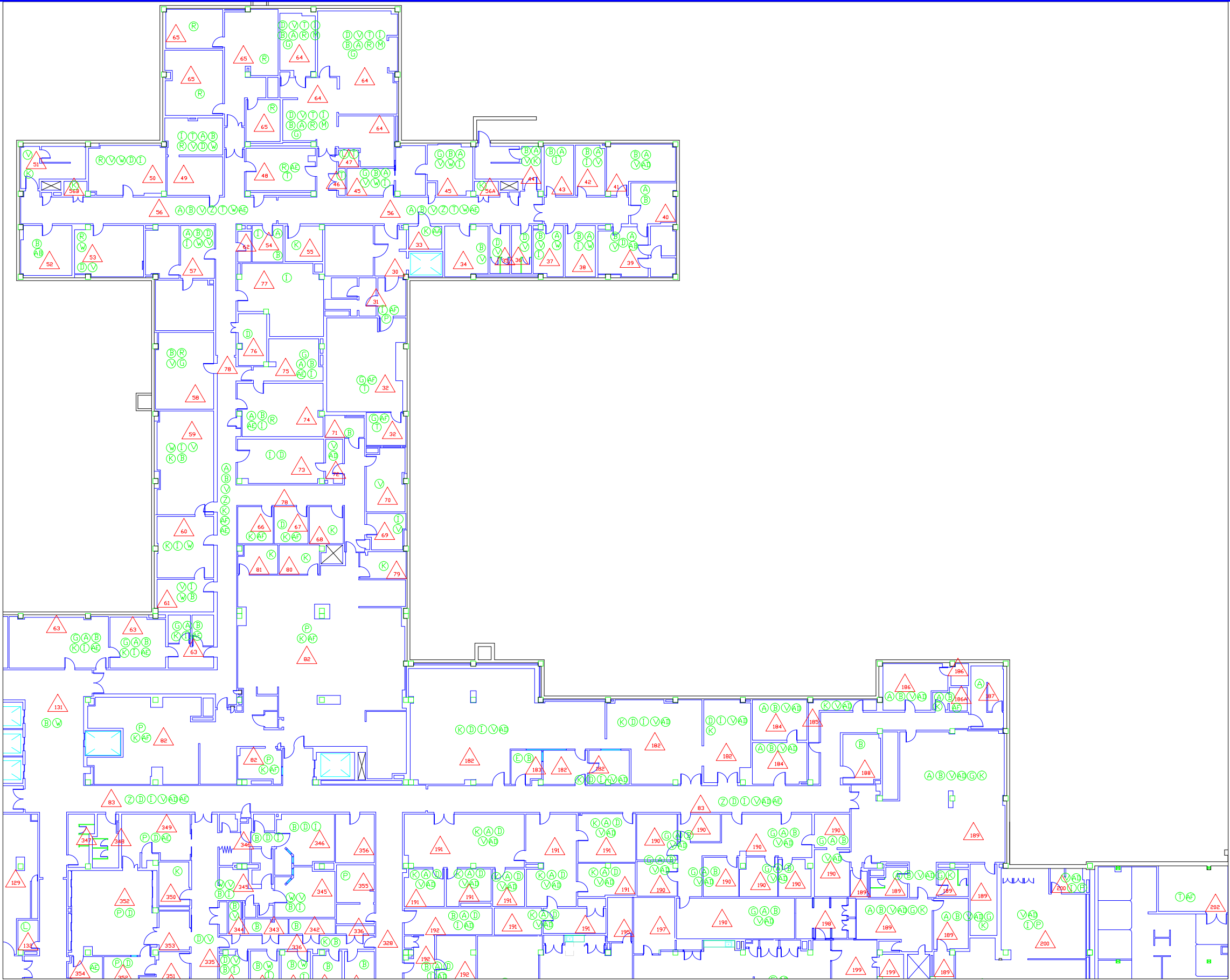


- ASBESTOS CONTAINING MATERIALS
- A. FLOOR TILE AND ASSOCIATED MASTIC
 - B. BLACK FLOOR TILE MASTIC
 - C. BLACK FLASHING TAR
 - D. BLACK MASTIC ON METAL PIPE
 - E. BLACK MASTIC ON PAPER PIPE WRAP
 - F. BLACK RADIATOR COVER MASTIC
 - G. BLACK SINK MASTIC
 - H. BROWN DUCT PIN MASTIC
 - I. BROWN DUCT SEAM SEALANT ON METAL
 - J. ELEVATOR BRAKE PADS
 - K. FIRE DOOR
 - L. FLANGE GASKETS
 - M. LINOLEUM AND ASSOCIATED MASTIC
 - N. GRAY EXTERIOR LOUVER CAULK (OLD)
 - O. GRAY PIN MASTIC UNDER FIBERGLASS BATTING
 - P. GRAY SINK MASTIC
 - Q. GRAY TRANSITE RADIATOR PANEL BOARD
 - R. LAB COUNTERTOPS / BEAKER RACKS
 - S. CALMAG DUCT INSULATION
 - T. CALMAG PIPE AND PIPE FITTING INSULATION
 - U. MUDDER DUCT INSULATION
 - V. MUDDER PIPE FITTING INSULATION ON FIBERGLASS
 - W. RED DUCT SEAM SEALANT ON METAL
 - X. TAN DUCT PIN MASTIC
 - Y. TRANSITE AHU BOARDS
 - Z. TRANSITE BOARD ELEVATOR PANEL
 - AA. TRANSITE ELEVATOR SWITCHBOARD
 - AB. TRANSITE FUME HOOD
 - AC. WHITE DUCT CAULK ON METAL
 - AD. WHITE PIPE SEAM SEALANT ON CANVAS
 - AE. WHITE PIPE SEAM SEALANT ON FOAM GLASS
 - AF. WHITE PIPE SEAM SEALANT ON PAPER (OLD)
 - AH. BLACK PAPER UNDER VINYL FLOORING
 - AI. ASSUMED BUILT-UP ROOFING
- △ - AREA DESIGNATION
- - ASBESTOS CONTAINING MATERIAL DESIGNATION

Date	Professional Seal		SUBBASEMENT FLOOR PLAN SOUTH ASBESTOS		Asbestos Drawings		11-16-2011	
			Approved:	Approved:	Building Number 1	Checked	Drawn	Project No.
			Approved:	Approved:	Location VAMC, WASHINGTON, DC	Drawing No. H1-1B		



ASBESTOS CONTAINING MATERIALS

- A. FLOOR TILE AND ASSOCIATED MASTIC
- B. BLACK FLOOR TILE MASTIC
- C. BLACK FLASHING TAR
- D. BLACK MASTIC ON METAL PIPE
- E. BLACK MASTIC ON PAPER PIPE WRAP
- F. BLACK RADIATOR COVER MASTIC
- G. BLACK SINK MASTIC
- H. BROWN DUCT PIN MASTIC
- I. BROWN DUCT SEAM SEALANT ON METAL
- J. ELEVATOR BRAKE PADS
- K. FIRE DOOR
- L. FLANGE GASKETS
- M. LINOLEUM AND ASSOCIATED MASTIC
- N. GRAY EXTERIOR LOUVER CAULK (OLD)
- O. GRAY PIN MASTIC UNDER FIBERGLASS BATTING
- P. GRAY SINK MASTIC
- Q. GRAY TRANSITE RADIATOR PANEL BOARD
- R. LAB COUNTERTOPS / BEAKER RACKS
- S. CALMAG DUCT INSULATION
- T. CALMAG PIPE AND PIPE FITTING INSULATION
- U. MUDDIED DUCT INSULATION
- V. MUDDIED PIPE FITTING INSULATION ON FIBERGLASS
- W. RED DUCT SEAM SEALANT ON METAL
- X. TAN DUCT PIN MASTIC
- Y. TRANSITE AHU BOARDS
- Z. TRANSITE BOARD ELEVATOR PANEL
- AA. TRANSITE ELEVATOR SWITCHBOARD
- AB. TRANSITE FUME HOOD
- AC. WHITE DUCT CAULK ON METAL
- AD. WHITE PIPE SEAM SEALANT ON CANVAS
- AE. WHITE PIPE SEAM SEALANT ON FOAM GLASS
- AF. WHITE PIPE SEAM SEALANT ON PAPER (OLD)
- AH. BLACK PAPER UNDER VINYL FLOORING
- AI. ASSUMED BUILT-UP ROOFING

△ - AREA DESIGNATION

○ - ASBESTOS CONTAINING MATERIAL DESIGNATION



AEROSOL MONITORING
& ANALYSIS, INC.
11511 KENTON ROAD, P.O. BOX 448
BUNNYSVILLE, MARYLAND 21078
PHONE: 410-864-3327
FAX: 410-864-3324

Professional Seal

Drawing Title
BASEMENT FLOOR PLAN
NORTH EAST ASBESTOS

Approved:

Approved:

Project Title
Asbestos Drawings

Building Number
1

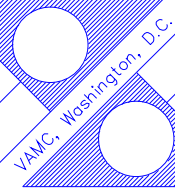
Checked

Drawn

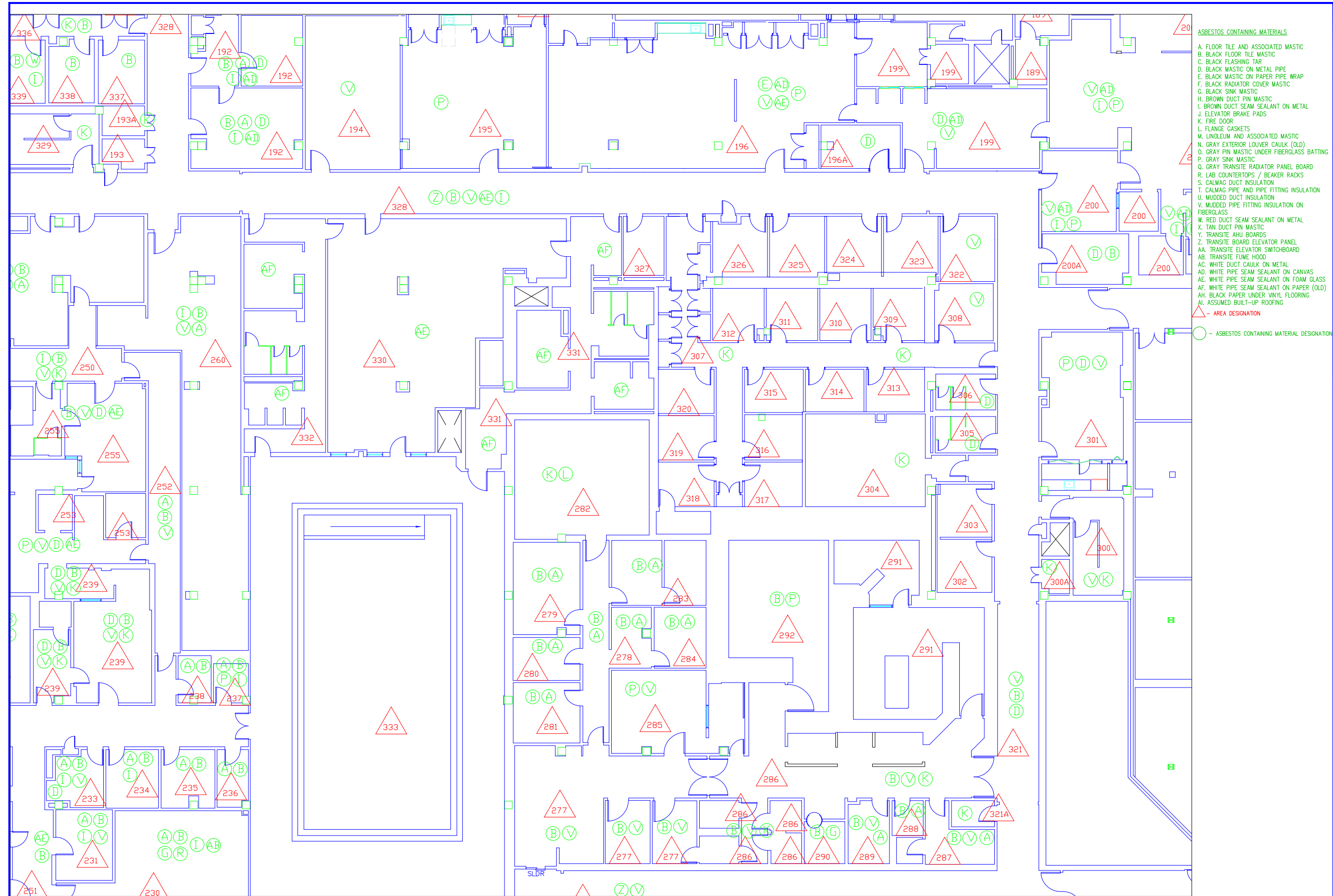
Location
VAMC, WASHINGTON, DC

Date
11-16-2011
Project No.


Drawing No.
H1-2

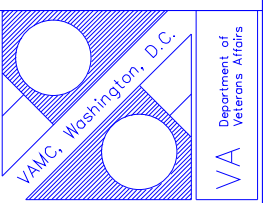


VA
Department of
Veterans Affairs




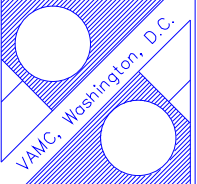
- ASBESTOS CONTAINING MATERIALS
- A. FLOOR TILE AND ASSOCIATED MASTIC
 - B. BLACK FLOOR TILE MASTIC
 - C. BLACK FLASHING TAR
 - D. BLACK MASTIC ON METAL PIPE
 - E. BLACK MASTIC ON PAPER PIPE WRAP
 - F. BLACK RADIATOR COVER MASTIC
 - G. BLACK SINK MASTIC
 - H. BROWN DUCT PIN MASTIC
 - I. BROWN DUCT SEAM SEALANT ON METAL
 - J. ELEVATOR BRAKE PADS
 - K. FIRE DOOR
 - L. FLANGE GASKETS
 - M. LINOLEUM AND ASSOCIATED MASTIC
 - N. GRAY EXTERIOR LOUVER CAULK (OLD)
 - O. GRAY PIN MASTIC UNDER FIBERGLASS BATTING
 - P. GRAY SINK MASTIC
 - Q. GRAY TRANSITE RADIATOR PANEL BOARD
 - R. LAB COUNTERTOPS / BEAKER RACKS
 - S. CALMAG DUCT INSULATION
 - T. CALMAG PIPE AND PIPE FITTING INSULATION
 - U. MUDD DUCT INSULATION
 - V. MUDD PIPE FITTING INSULATION ON FIBERGLASS
 - W. RED DUCT SEAM SEALANT ON METAL
 - X. TAN DUCT PIN MASTIC
 - Y. TRANSITE AHU BOARDS
 - Z. TRANSITE BOARD ELEVATOR PANEL
 - AA. TRANSITE ELEVATOR SWITCHBOARD
 - AB. TRANSITE FUME HOOD
 - AC. WHITE DUCT CAULK ON METAL
 - AD. WHITE PIPE SEAM SEALANT ON CANVAS
 - AE. WHITE PIPE SEAM SEALANT ON FOAM GLASS
 - AF. WHITE PIPE SEAM SEALANT ON PAPER (OLD)
 - AH. BLACK PAPER UNDER VINYL FLOORING
 - AI. ASSUMED BUILT-UP ROOFING
- △ - AREA DESIGNATION
- - ASBESTOS CONTAINING MATERIAL DESIGNATION

Date	 AEROSOL MONITORING & ANALYSIS, INC. 1317 ARBOR ROAD, P.O. BOX 446 BROOKVIEW, MARYLAND 21078 WEBSITE: WWW.AMAINCORP.COM PHONE: 410-664-3327 FAX: 410-664-3384	Drawing Title BASEMENT FLOOR PLAN SOUTH EAST ASBESTOS		Project Title Asbestos Drawings		11-16-2011 Project No.	
		Approved:	Approved:	Building Number 1	Checked	Drawn	Drawing No. H1-3
	Professional Seal		Approved:	Location VAMC, WASHINGTON, DC			




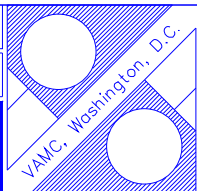


- ASBESTOS CONTAINING MATERIALS
- A. FLOOR TILE AND ASSOCIATED MASTIC
 - B. BLACK FLOOR TILE MASTIC
 - C. BLACK FLASHING TAR
 - D. BLACK MASTIC ON METAL PIPE
 - E. BLACK MASTIC ON PAPER PIPE WRAP
 - F. BLACK RADIATOR COVER MASTIC
 - G. BLACK SINK MASTIC
 - H. BROWN DUCT PIN MASTIC
 - I. BROWN DUCT SEAM SEALANT ON METAL
 - J. ELEVATOR BRAKE PADS
 - K. FIRE DOOR
 - L. FLANGE GASKETS
 - M. LINOLEUM AND ASSOCIATED MASTIC
 - N. GRAY EXTERIOR LOUVER CAULK (OLD)
 - O. GRAY PIN MASTIC UNDER FIBERGLASS BATTING
 - P. GRAY SINK MASTIC
 - Q. GRAY TRANSITE RADIATOR PANEL BOARD
 - R. LAB COUNTERTOPS / BEAKER RACKS
 - S. CALMAG DUCT INSULATION
 - T. CALMAG PIPE AND PIPE FITTING INSULATION
 - U. MUDD DUCT INSULATION
 - V. MUDD PIPE FITTING INSULATION ON FIBERGLASS
 - W. RED DUCT SEAM SEALANT ON METAL
 - X. TAN DUCT PIN MASTIC
 - Y. TRANSITE AHU BOARDS
 - Z. TRANSITE BOARD ELEVATOR PANEL
 - AA. TRANSITE ELEVATOR SWITCHBOARD
 - AB. TRANSITE FUME HOOD
 - AC. WHITE DUCT CAULK ON METAL
 - AD. WHITE PIPE SEAM SEALANT ON CANVAS
 - AE. WHITE PIPE SEAM SEALANT ON FOAM GLASS
 - AF. WHITE PIPE SEAM SEALANT ON PAPER (OLD)
 - AH. BLACK PAPER UNDER VINYL FLOORING
 - AI. ASSUMED BUILT-UP ROOFING
- △ - AREA DESIGNATION
- - ASBESTOS CONTAINING MATERIAL DESIGNATION

Date	 AEROSOL MONITORING & ANALYSIS, INC. 1551 LINDEN ROAD, P.O. BOX 446 HANOVER, MARYLAND 21076 WEBSITE: WWW.AMAINCORP.COM PHONE: 410-884-3327 FAX: 410-884-3384	Drawing Title BASEMENT FLOOR PLAN SOUTH WEST ASBESTOS		Project Title Asbestos Drawings		11-16-2011 Project No.		 VAMC, Washington, D.C.	Department of Veterans Affairs VA
		Approved:	Approved:	Building Number 1	Checked	Drawn	Drawing No. H1-4		
	Professional Seal			Location VAMC, WASHINGTON, DC					

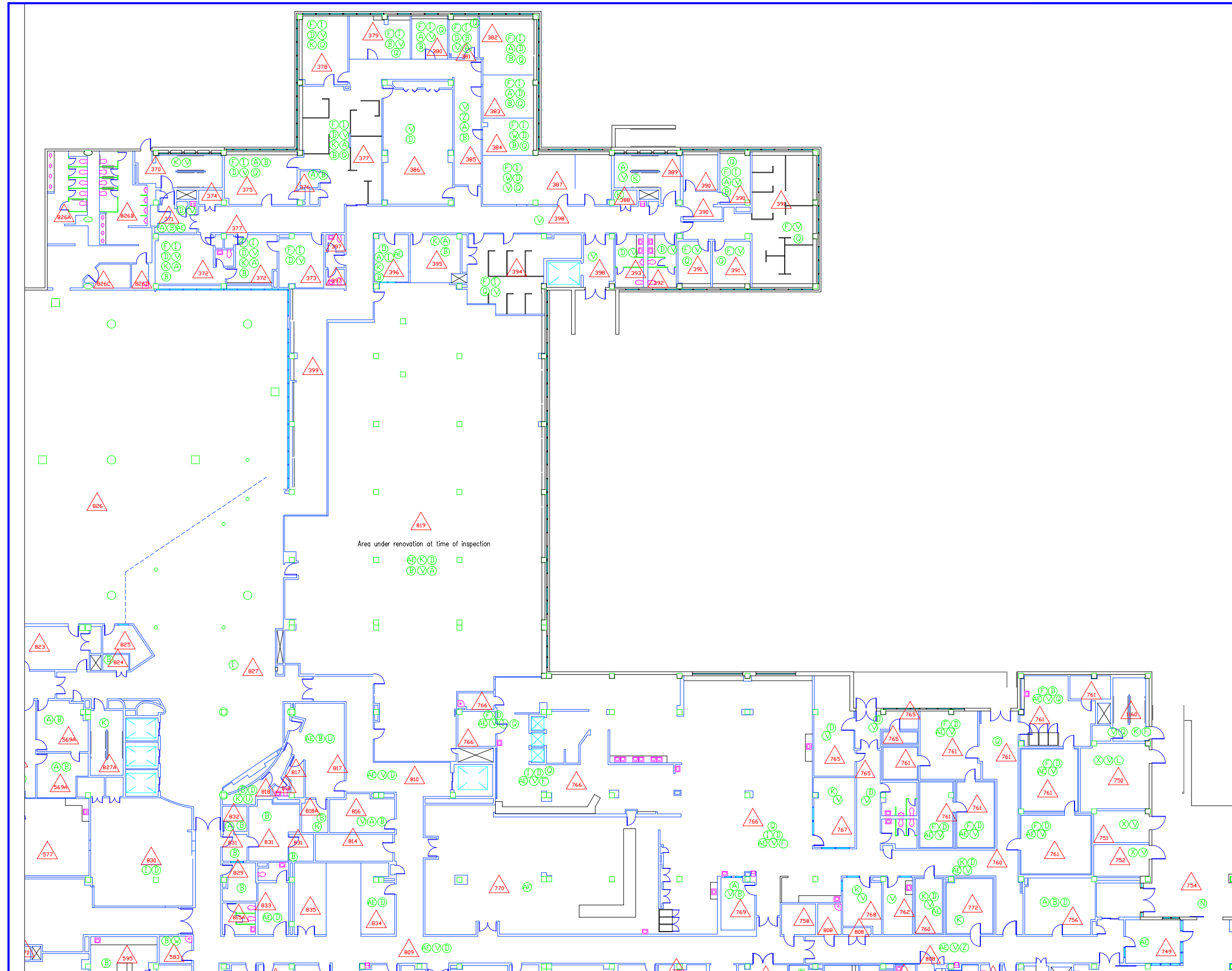
- ASBESTOS CONTAINING MATERIALS
- A. FLOOR TILE AND ASSOCIATED MASTIC
 - B. BLACK FLOOR TILE MASTIC
 - C. BLACK FLASHING TAR
 - D. BLACK MASTIC ON METAL PIPE
 - E. BLACK MASTIC ON PAPER PIPE WRAP
 - F. BLACK RADIATOR COVER MASTIC
 - G. BLACK SINK MASTIC
 - H. BROWN DUCT PIN MASTIC
 - I. BROWN DUCT SEAM SEALANT ON METAL
 - J. ELEVATOR BRAKE PADS
 - K. FIRE DOOR
 - L. FLANGE GASKETS
 - M. LINOLEUM AND ASSOCIATED MASTIC
 - N. GRAY EXTERIOR LOUVER CAULK (OLD)
 - O. GRAY PIN MASTIC UNDER FIBERGLASS BATTING
 - P. GRAY SINK MASTIC
 - Q. GRAY TRANSITE RADIATOR PANEL BOARD
 - R. LAB COUNTERTOPS / BEAKER RACKS
 - S. CALMAG DUCT INSULATION
 - T. CALMAG PIPE AND PIPE FITTING INSULATION
 - U. MUDDIED DUCT INSULATION
 - V. MUDDIED PIPE FITTING INSULATION ON FIBERGLASS
 - W. RED DUCT SEAM SEALANT ON METAL
 - X. TAN DUCT PIN MASTIC
 - Y. TRANSITE AHU BOARDS
 - Z. TRANSITE BOARD ELEVATOR PANEL
 - AA. TRANSITE ELEVATOR SWITCHBOARD
 - AB. TRANSITE FUME HOOD
 - AC. WHITE DUCT CAULK ON METAL
 - AD. WHITE PIPE SEAM SEALANT ON CANVAS
 - AE. WHITE PIPE SEAM SEALANT ON FOAM GLASS
 - AF. WHITE PIPE SEAM SEALANT ON PAPER (OLD)
 - AH. BLACK PAPER UNDER VINYL FLOORING
 - AL. ASSUMED BUILT-UP ROOFING
- △ - AREA DESIGNATION
- - ASBESTOS CONTAINING MATERIAL DESIGNATION



Date		 AEROSOL MONITORING & ANALYSIS, INC. 1321 JEFFERSON ROAD, P.O. BOX 448 HARDWICK, MASSACHUSETTS 01478 PHONE: 410-884-3327 FAX: 410-884-3384 Professional Seal		Drawing Title BASEMENT FLOOR PLAN NORTH WEST ASBESTOS		Project Title Asbestos Drawings		11-16-2011 Project No.		 VAMC, Washington, D.C. Department of Veterans Affairs	
				Approved:		Building Number 1		Checked			Drawing No. H1-5
				Approved:		Location VAMC, WASHINGTON, DC		Drawn			



○ - ASBESTOS CONTAINING MATERIAL DESIGNATION



	Date
--	------



Professional Seal

Drawing Title
FIRST FLOOR PLAN
NORTH EAST ASBESTOS

Approved:

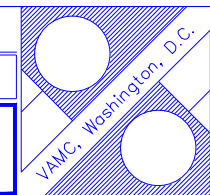
Approved:

Asbestos Drawings

Building Number 1	Checked	Drawn
Location VAMC, WASHINGTON, DC		

11-16-2011
Project No.

Drawing No.
H1-6

VA
Department of
Veterans Affairs



- ASBESTOS CONTAINING MATERIALS
- A. FLOOR TILE AND ASSOCIATED MASTIC
 - B. BLACK FLOOR TILE MASTIC
 - C. BLACK FLASHING TAR
 - D. BLACK MASTIC ON METAL PIPE
 - E. BLACK MASTIC ON PAPER PIPE WRAP
 - F. BLACK RADIATOR COVER MASTIC
 - G. BLACK SINK MASTIC
 - H. BROWN DUCT PIN MASTIC
 - I. BROWN DUCT SEAM SEALANT ON METAL
 - J. ELEVATOR BRAKE PADS
 - K. FIRE DOOR
 - L. FLANGE GASKETS
 - M. LINOLEUM AND ASSOCIATED MASTIC
 - N. GRAY EXTERIOR LOUVER CAULK (OLD)
 - O. GRAY PIN MASTIC UNDER FIBERGLASS BATTING
 - P. GRAY SINK MASTIC
 - Q. GRAY TRANSITE RADIATOR PANEL BOARD
 - R. LAB COUNTERTOPS / BEAKER RACKS
 - S. CALMAG DUCT INSULATION
 - T. CALMAG PIPE AND PIPE FITTING INSULATION
 - U. MUDD DUCT INSULATION
 - V. MUDD PIPE FITTING INSULATION ON FIBERGLASS
 - W. RED DUCT SEAM SEALANT ON METAL
 - X. TAN DUCT PIN MASTIC
 - Y. TRANSITE AHU BOARDS
 - Z. TRANSITE BOARD ELEVATOR PANEL
 - AA. TRANSITE ELEVATOR SWITCHBOARD
 - AB. TRANSITE FUME HOOD
 - AC. WHITE DUCT CAULK ON METAL
 - AD. WHITE PIPE SEAM SEALANT ON CANVAS
 - AE. WHITE PIPE SEAM SEALANT ON FOAM GLASS
 - AF. WHITE PIPE SEAM SEALANT ON PAPER (OLD)
 - AH. BLACK PAPER UNDER VINYL FLOORING
 - AI. ASSUMED BUILT-UP ROOFING
- △ - AREA DESIGNATION
- - ASBESTOS CONTAINING MATERIAL DESIGNATION

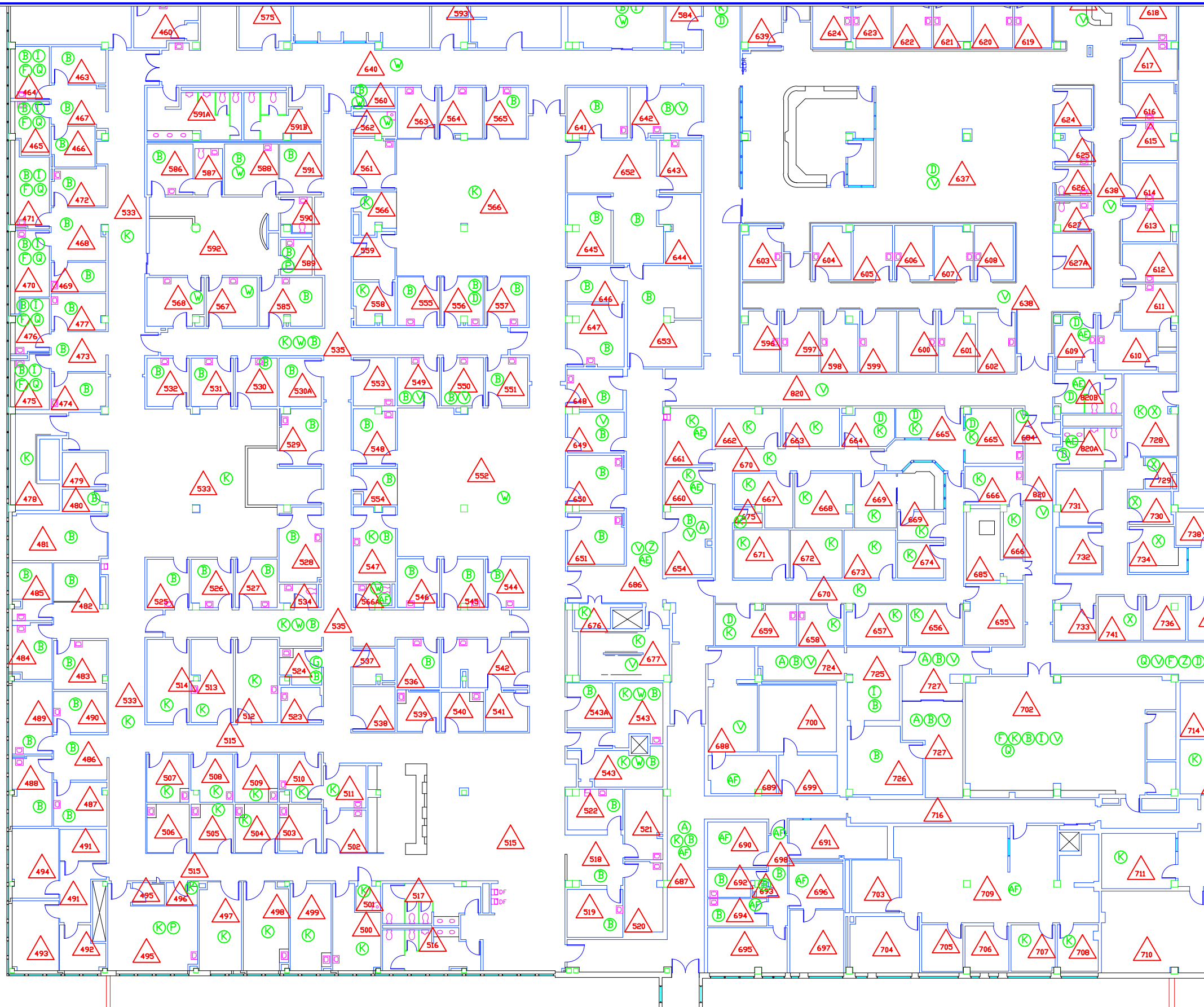
Date		Professional Seal	Drawing Title FIRST FLOOR PLAN SOUTH EAST ASBESTOS	Asbestos Drawings	11-16-2011 Project No.		VA Department of Veterans Affairs
			Approved:	Building Number 1	Checked		
			Approved:	Location VAMC, WASHINGTON, DC			




ASBESTOS CONTAINING MATERIALS

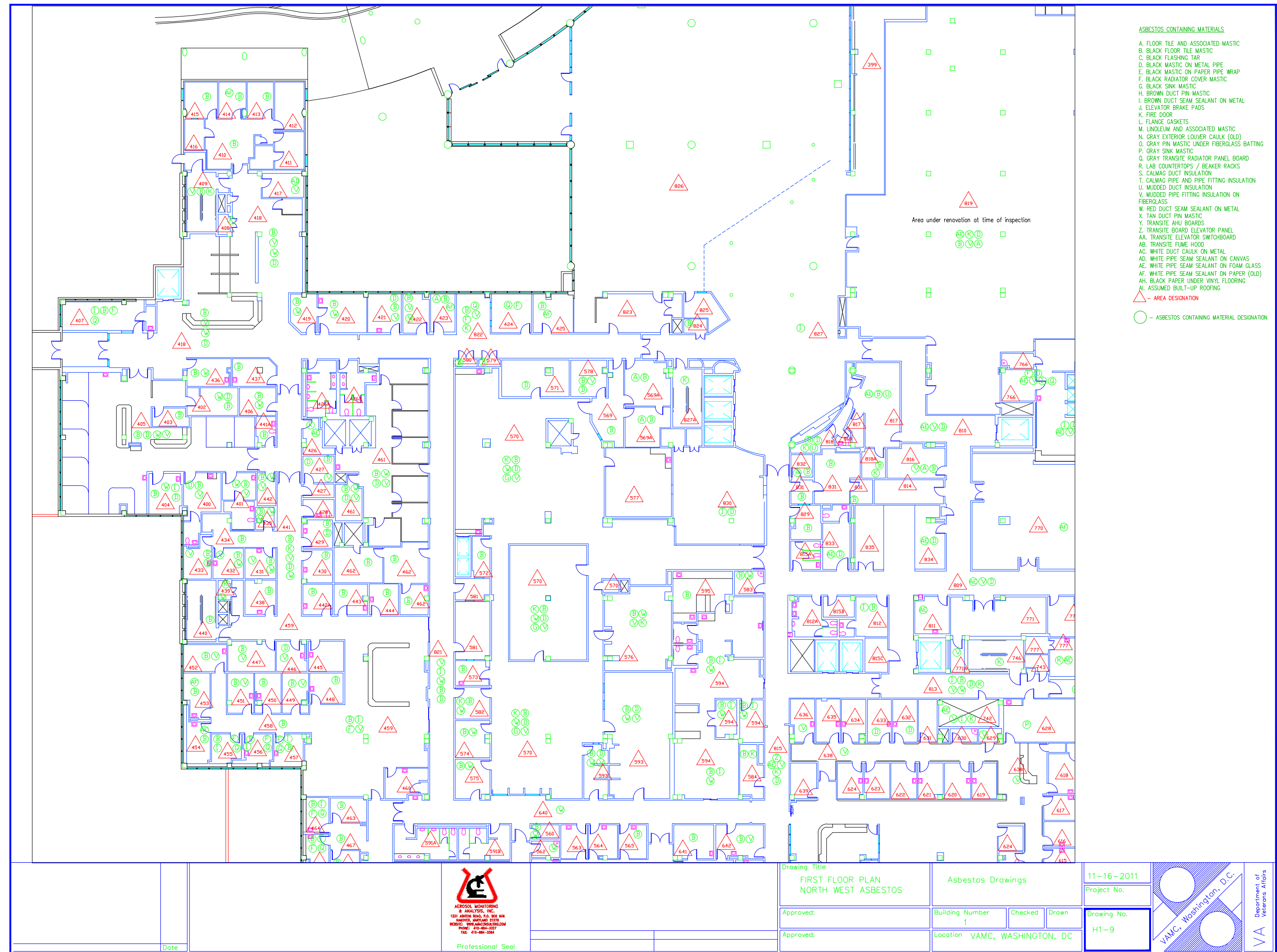
- A. FLOOR TILE AND ASSOCIATED MASTIC
- B. BLACK FLOOR TILE MASTIC
- C. BLACK FLASHING TAR
- D. BLACK MASTIC ON METAL PIPE
- E. BLACK MASTIC ON PAPER PIPE WRAP
- F. BLACK RADIATOR COVER MASTIC
- G. BLACK SINK MASTIC
- H. BROWN DUCT PIN MASTIC
- I. BROWN DUCT SEAM SEALANT ON METAL
- J. ELEVATOR BRAKE PADS
- K. FIRE DOOR
- L. FLANGE GASKETS
- M. LINOLEUM AND ASSOCIATED MASTIC
- N. GRAY EXTERIOR LOUVER CAULK (OLD)
- O. GRAY PIN MASTIC UNDER FIBERGLASS BATTING
- P. GRAY SINK MASTIC
- Q. GRAY TRANSITE RADIATOR PANEL BOARD
- R. LAB COUNTERTOPS / BEAKER RACKS
- S. CALMAG DUCT INSULATION
- T. CALMAG PIPE AND PIPE FITTING INSULATION
- U. MUDDED DUCT INSULATION
- V. MUDDED PIPE FITTING INSULATION ON FIBERGLASS
- W. RED DUCT SEAM SEALANT ON METAL
- X. TAN DUCT PIN MASTIC
- Y. TRANSITE AHU BOARDS
- Z. TRANSITE BOARD ELEVATOR PANEL
- AA. TRANSITE ELEVATOR SWITCHBOARD
- AB. TRANSITE FUME HOOD
- AC. WHITE DUCT CAULK ON METAL
- AD. WHITE PIPE SEAM SEALANT ON CANVAS
- AE. WHITE PIPE SEAM SEALANT ON FOAM GLASS
- AF. WHITE PIPE SEAM SEALANT ON PAPER (OLD)
- AH. BLACK PAPER UNDER VINYL FLOORING
- AL. ASSUMED BUILT-UP ROOFING

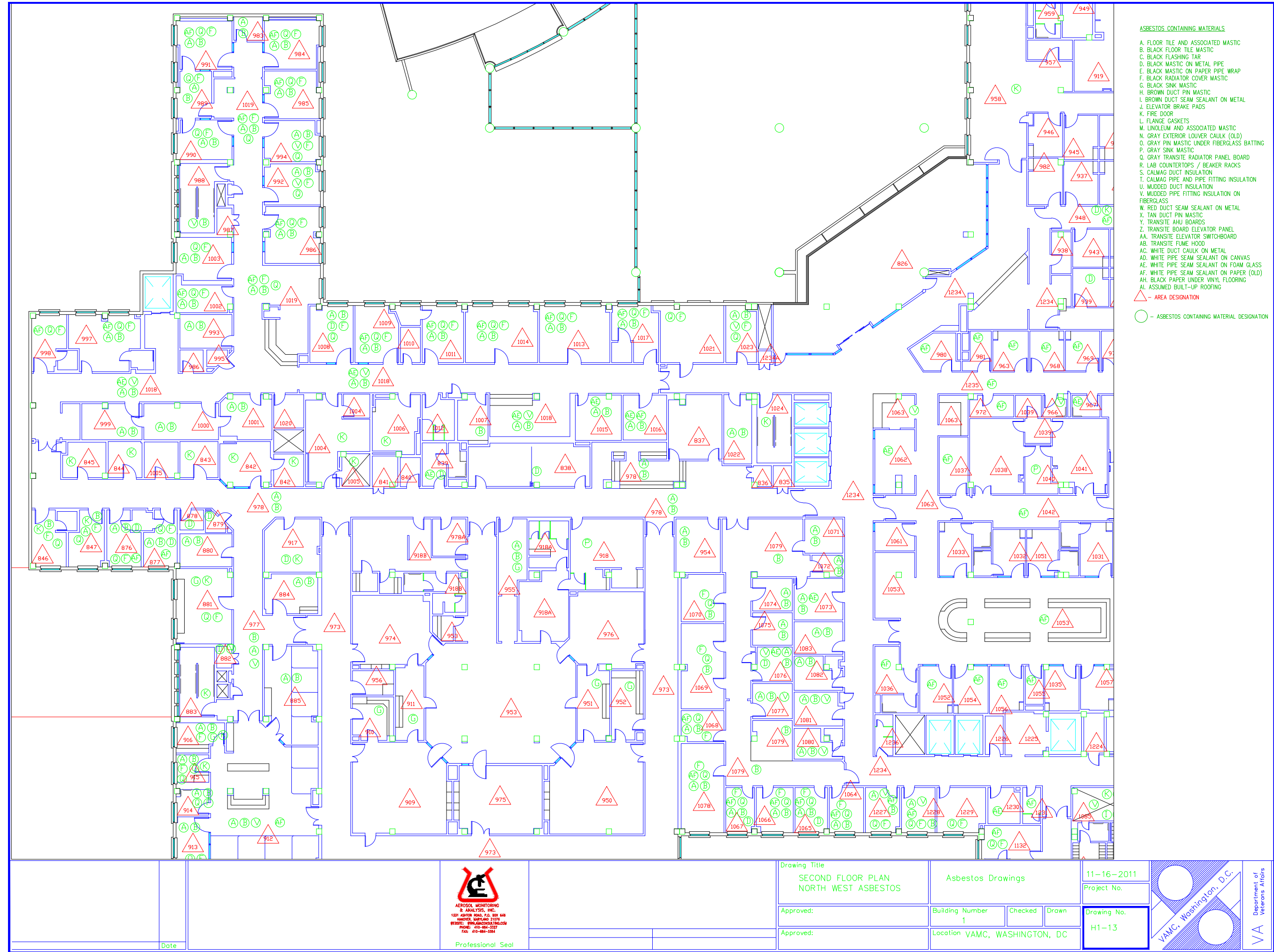
△ - AREA DESIGNATION

○ - ASBESTOS CONTAINING MATERIAL DESIGNATION



Date	 <p>AEROSOL MONITORING & ANALYSIS, INC. 1371 JEFFERSON ROAD, P.O. BOX 400 BOWERS, MARYLAND 21030 TEL: 410-326-3827 FAX: 410-326-3828</p>	Drawing Title FIRST FLOOR PLAN SOUTH WEST ASBESTOS		Asbestos Drawings		11-16-2011 Project No.		 <p>VAMC, Washington, D.C.</p>	 <p>Department of Veterans Affairs</p>
		Approved:	Approved:	Building Number 1	Checked	Drawn	Drawing No. H1-8		
				Location	VAMC, WASHINGTON, DC				





- ASBESTOS CONTAINING MATERIALS
- A. FLOOR TILE AND ASSOCIATED MASTIC
 - B. BLACK FLOOR TILE MASTIC
 - C. BLACK FLASHING TAR
 - D. BLACK MASTIC ON METAL PIPE
 - E. BLACK MASTIC ON PAPER PIPE WRAP
 - F. BLACK RADIATOR COVER MASTIC
 - G. BLACK SINK MASTIC
 - H. BROWN DUCT PIN MASTIC
 - I. BROWN DUCT SEAM SEALANT ON METAL
 - J. ELEVATOR BRAKE PADS
 - K. FIRE DOOR
 - L. FLANGE GASKETS
 - M. LINOLEUM AND ASSOCIATED MASTIC
 - N. GRAY EXTERIOR LOUVER CAULK (OLD)
 - O. GRAY PIN MASTIC UNDER FIBERGLASS BATTING
 - P. GRAY SINK MASTIC
 - Q. GRAY TRANSITE RADIATOR PANEL BOARD
 - R. LAB COUNTERTOPS / BEAKER RACKS
 - S. CALMAG DUCT INSULATION
 - T. CALMAG PIPE AND PIPE FITTING INSULATION
 - U. MUDDIED DUCT INSULATION
 - V. MUDDIED PIPE FITTING INSULATION ON FIBERGLASS
 - W. RED DUCT SEAM SEALANT ON METAL
 - X. TAN DUCT PIN MASTIC
 - Y. TRANSITE AHU BOARDS
 - Z. TRANSITE BOARD ELEVATOR PANEL
 - AA. TRANSITE ELEVATOR SWITCHBOARD
 - AB. TRANSITE FUME HOOD
 - AC. WHITE DUCT CAULK ON METAL
 - AD. WHITE PIPE SEAM SEALANT ON CANVAS
 - AE. WHITE PIPE SEAM SEALANT ON FOAM GLASS
 - AF. WHITE PIPE SEAM SEALANT ON PAPER (OLD)
 - AH. BLACK PAPER UNDER VINYL FLOORING
 - AL. ASSUMED BUILT-UP ROOFING
- △ - AREA DESIGNATION
- - ASBESTOS CONTAINING MATERIAL DESIGNATION


AEROSOL MONITORING
& ANALYSIS, INC.
1531 AUSTIN ROAD, P.O. BOX 648
BANDER, MARYLAND 21036
WEBSITE: WWW.AMAINC.COM
PHONE: 410-864-5327
FAX: 410-864-5304

Professional Seal

Drawing Title
SECOND FLOOR PLAN
NORTH WEST ASBESTOS

Approved:

Approved:

Asbestos Drawings

Building Number
1

Location VAMC, WASHINGTON, DC

Checked

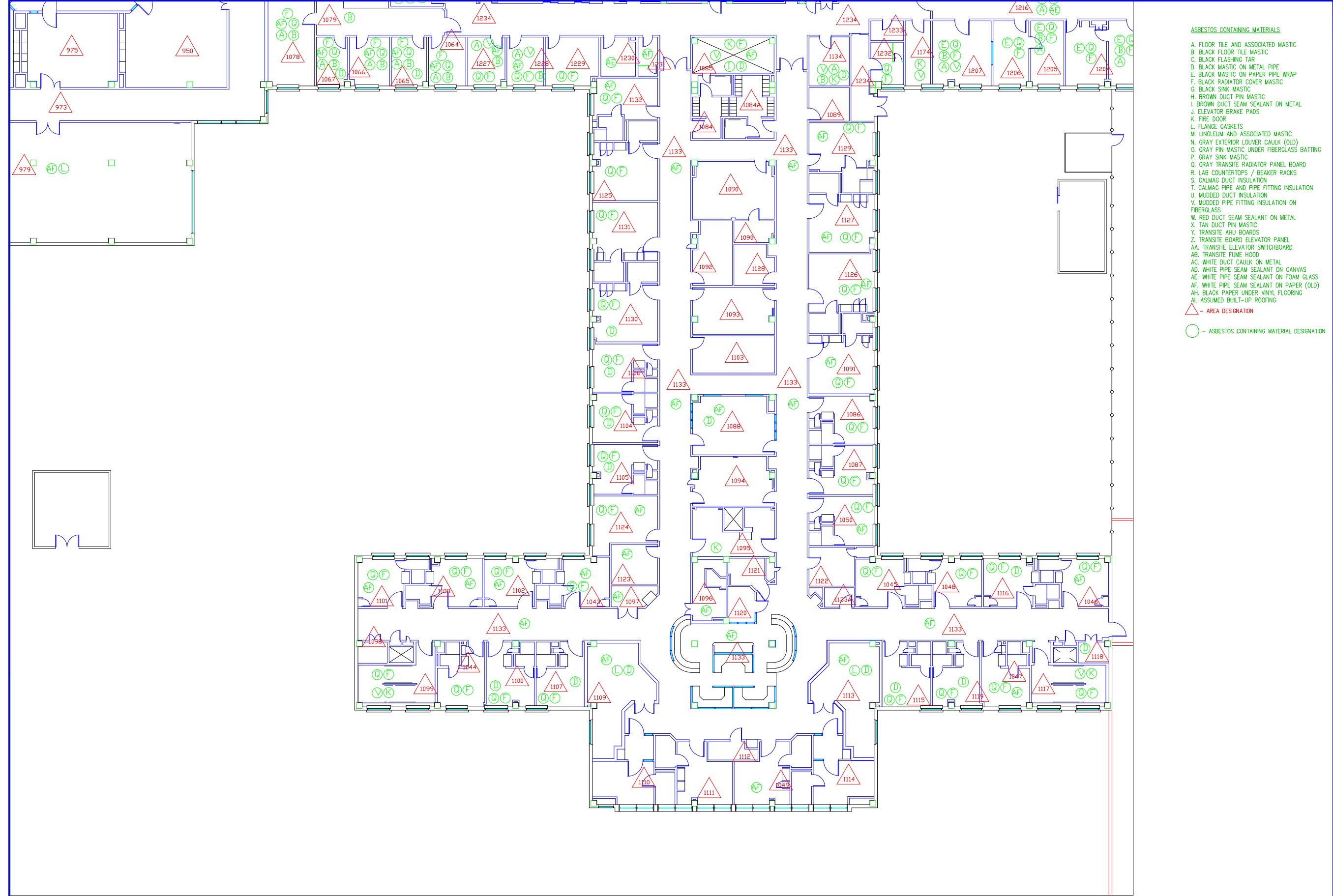
Drawn


11-16-2011
Project No.

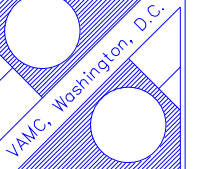
Drawing No.
H1-13

VAMC, Washington, D.C.

Department of
Veterans Affairs



Date	 AEROSOL MONITORING & ANALYSIS, INC. 1551 KORTH ROAD, P.O. BOX 644 HANOVER, MARYLAND 21076 WEBSITE: WWW.AM&A-INC.COM PHONE: 410-884-3327 FAX: 410-884-3384	Drawing Title SECOND FLOOR PLAN SOUTH WEST ASBESTOS	Approved:		Building Number 1		Drawing No. H1-12
			Approved:		Location VAMC, WASHINGTON, DC		
Professional Seal				Asbestos Drawings		11-16-2011 Project No.	



VA
Department of
Veterans Affairs



ASBESTOS CONTAINING MATERIALS

- A. FLOOR TILE AND ASSOCIATED MASTIC
- B. BLACK FLOOR TILE MASTIC
- C. BLACK FLASHING TAR
- D. BLACK MASTIC ON METAL PIPE
- E. BLACK MASTIC ON PAPER PIPE WRAP
- F. BLACK RADIATOR COVER MASTIC
- G. BLACK SINK MASTIC
- H. BROWN DUCT PIN MASTIC
- I. BROWN DUCT SEAM SEALANT ON METAL
- J. ELEVATOR BRAKE PADS
- K. FIRE DOOR
- L. FLANGE GASKETS
- M. LINOLEUM AND ASSOCIATED MASTIC
- N. GRAY EXTERIOR LOUVER CAULK (OLD)
- O. GRAY PIN MASTIC UNDER FIBERGLASS BATTING
- P. GRAY SINK MASTIC
- Q. GRAY TRANSITE RADIATOR PANEL BOARD
- R. LAB COUNTERTOPS / BEAKER RACKS
- S. CALMAG DUCT INSULATION
- T. CALMAG PIPE AND PIPE FITTING INSULATION
- U. MUDDED DUCT INSULATION
- V. MUDDED PIPE FITTING INSULATION ON FIBERGLASS
- W. RED DUCT SEAM SEALANT ON METAL
- X. TAN DUCT PIN MASTIC
- Y. TRANSITE AHU BOARDS
- Z. TRANSITE BOARD ELEVATOR PANEL
- AA. TRANSITE BOARD ELEVATOR PANEL
- AB. TRANSITE FUME HOOD
- AC. WHITE DUCT CAULK ON METAL
- AD. WHITE PIPE SEAM SEALANT ON CANVAS
- AE. WHITE PIPE SEAM SEALANT ON FOAM GLASS
- AF. WHITE PIPE SEAM SEALANT ON PAPER (OLD)
- AH. BLACK PAPER UNDER VINYL FLOORING
- AL. ASSUMED BUILT-UP ROOFING

△ - AREA DESIGNATION

○ - ASBESTOS CONTAINING MATERIAL DESIGNATION



AEROSOL MONITORING
& ANALYSIS, INC.
1331 JORDON ROAD, P.O. BOX 848
BANDOLIER, MARYLAND 21078
WEBSITE: WWW.AMAINCORP.COM
PHONE: 410-684-5327
FAX: 410-684-5284

Professional Seal

Drawing Title
THIRD FLOOR PLAN
NORTH EAST ASBESTOS

Approved:

Approved:

Asbestos Drawings

Building Number

1

Checked

Drawn

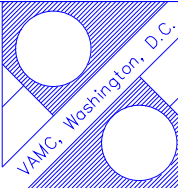
Location VAMC, WASHINGTON, DC

11-16-2011

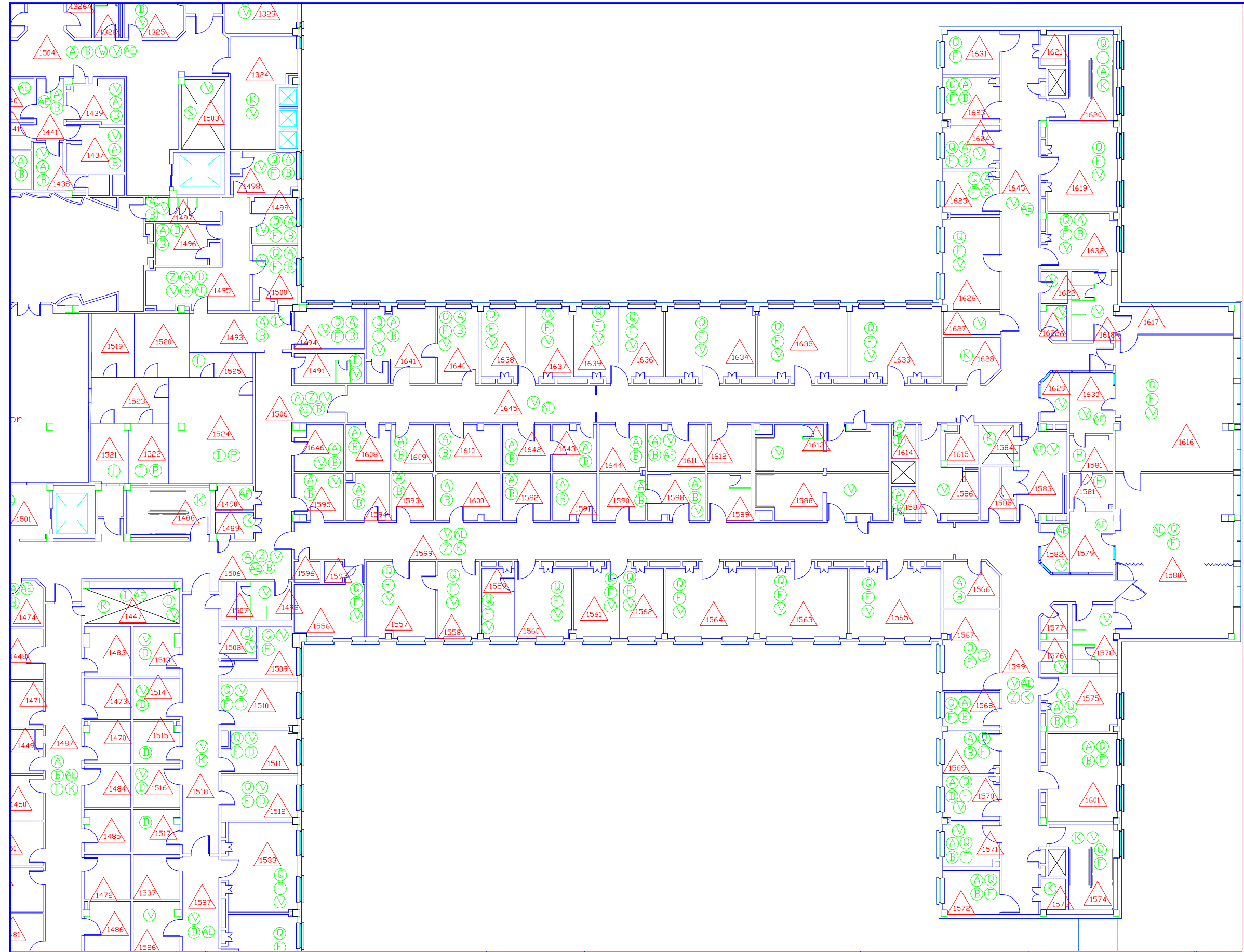
Project No.

Drawing No.


H1-14

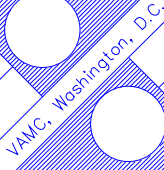


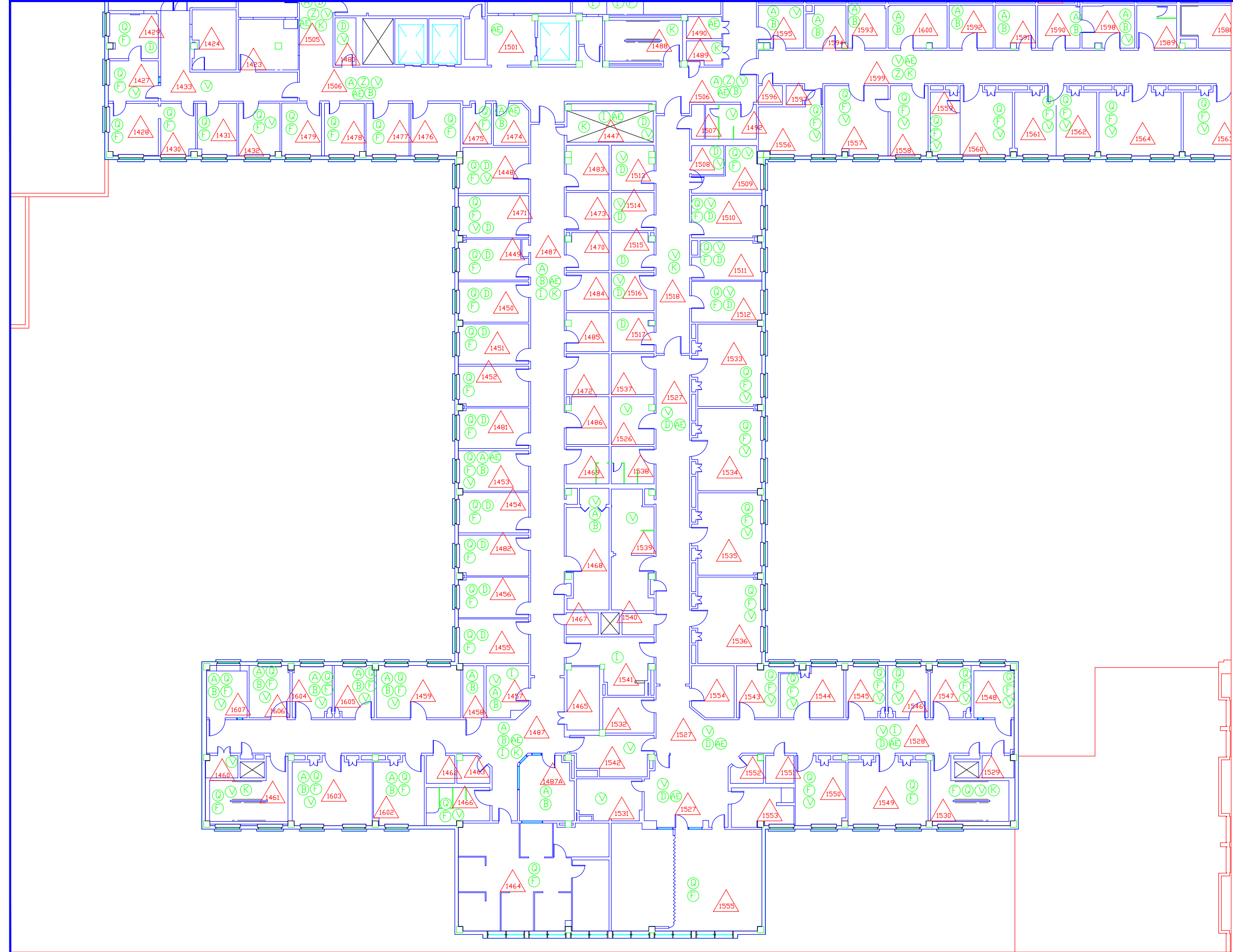
Department of
Veterans Affairs




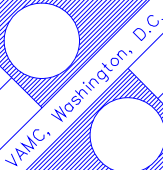
- ASBESTOS CONTAINING MATERIALS
- A. FLOOR TILE AND ASSOCIATED MASTIC
 - B. BLACK FLOOR TILE MASTIC
 - C. BLACK FLASHING TAR
 - D. BLACK MASTIC ON METAL PIPE
 - E. BLACK MASTIC ON PAPER PIPE WRAP
 - F. BLACK RADIATOR COVER MASTIC
 - G. BLACK SINK MASTIC
 - H. BROWN DUCT PIN MASTIC
 - I. BROWN DUCT SEAM SEALANT ON METAL
 - J. ELEVATOR BRAKE PADS
 - K. FIRE DOOR
 - L. FLANGE GASKETS
 - M. LINOLEUM AND ASSOCIATED MASTIC
 - N. GRAY EXTERIOR LOUVER CAULK (OLD)
 - O. GRAY PIN MASTIC UNDER FIBERGLASS BATTING
 - P. GRAY SINK MASTIC
 - Q. GRAY TRANSITE RADIATOR PANEL BOARD
 - R. LAB COUNTERTOPS / BEAKER RACKS
 - S. CALMAG DUCT INSULATION
 - T. CALMAG PIPE AND PIPE FITTING INSULATION
 - U. MUDDIED DUCT INSULATION
 - V. MUDDIED PIPE FITTING INSULATION ON FIBERGLASS
 - W. RED DUCT SEAM SEALANT ON METAL
 - X. TAN DUCT PIN MASTIC
 - Y. TRANSITE AHU BOARDS
 - Z. TRANSITE BOARD ELEVATOR PANEL
 - AA. TRANSITE ELEVATOR SWITCHBOARD
 - AB. TRANSITE FUME HOOD
 - AC. WHITE DUCT CAULK ON METAL
 - AD. WHITE PIPE SEAM SEALANT ON CANVAS
 - AE. WHITE PIPE SEAM SEALANT ON FOAM GLASS
 - AF. WHITE PIPE SEAM SEALANT ON PAPER (OLD)
 - AG. BLACK PAPER UNDER VINYL FLOORING
 - AH. ASSUMED BUILT-UP ROOFING
- △ - AREA DESIGNATION
- - ASBESTOS CONTAINING MATERIAL DESIGNATION

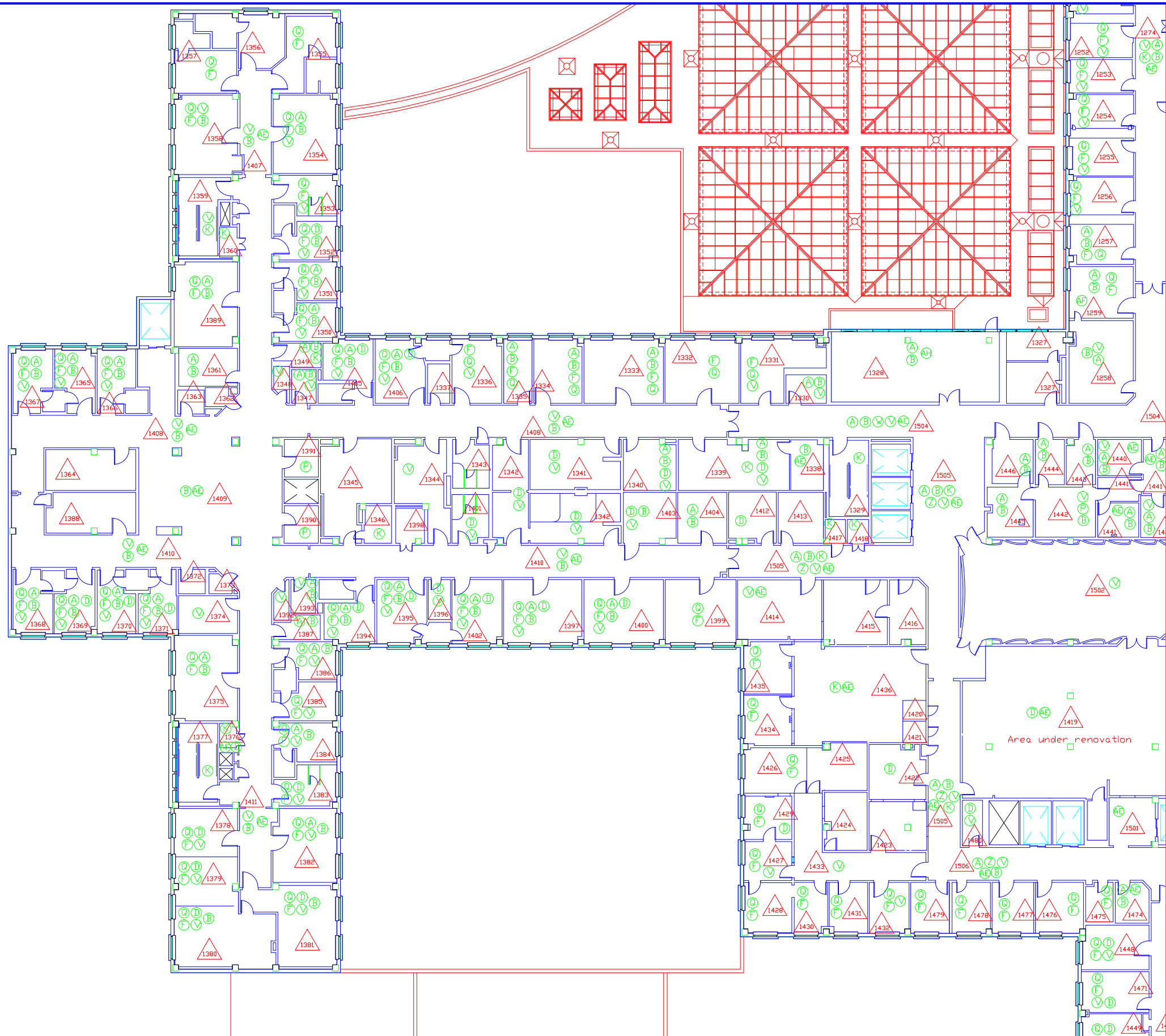
Date	 AEROSOL MONITORING & ANALYSIS, INC. 1331 LORTON ROAD, P.O. BOX 646 HANOVER, MARYLAND 21076 WEBSITE: WWW.AMAANALYSIS.COM PHONE: 410-884-3327 FAX: 410-884-3384	Drawing Title THIRD FLOOR PLAN SOUTH EAST ASBESTOS		Asbestos Drawings		11-16-2011	
		Approved:	Approved:	Building Number 1	Checked	Drawn	Project No.
	Professional Seal		Approved:	Location VAMC, WASHINGTON, DC		Drawing No. H1-15	







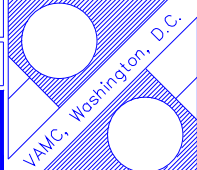
- ASBESTOS CONTAINING MATERIALS
- A. FLOOR TILE AND ASSOCIATED MASTIC
 - B. BLACK FLOOR TILE MASTIC
 - C. BLACK FLASHING TAR
 - D. BLACK MASTIC ON METAL PIPE
 - E. BLACK MASTIC ON PAPER PIPE WRAP
 - F. BLACK RADIATOR COVER MASTIC
 - G. BLACK SINK MASTIC
 - H. BROWN DUCT PIN MASTIC
 - I. BROWN DUCT SEAM SEALANT ON METAL
 - J. ELEVATOR BRAKE PADS
 - K. FIRE DOOR
 - L. FLANGE GASKETS
 - M. LINOLEUM AND ASSOCIATED MASTIC
 - N. GRAY EXTERIOR LOUVER CAULK (OLD)
 - O. GRAY PIN MASTIC UNDER FIBERGLASS BATTING
 - P. GRAY SINK MASTIC
 - Q. GRAY TRANSITE RADIATOR PANEL BOARD
 - R. LAB COUNTERTOPS / BEAKER RACKS
 - S. CALMAG DUCT INSULATION
 - T. CALMAG PIPE AND PIPE FITTING INSULATION
 - U. MUDDED DUCT INSULATION
 - V. MUDDED PIPE FITTING INSULATION ON FIBERGLASS
 - W. RED DUCT SEAM SEALANT ON METAL
 - X. TAN DUCT PIN MASTIC
 - Y. TRANSITE AHU BOARDS
 - Z. TRANSITE BOARD ELEVATOR PANEL
 - AA. TRANSITE ELEVATOR SWITCHBOARD
 - AB. TRANSITE FUME HOOD
 - AC. WHITE DUCT CAULK ON METAL
 - AD. WHITE PIPE SEAM SEALANT ON CANVAS
 - AE. WHITE PIPE SEAM SEALANT ON FOAM GLASS
 - AF. WHITE PIPE SEAM SEALANT ON PAPER (OLD)
 - AH. BLACK PAPER UNDER VINYL FLOORING
 - AI. ASSUMED BUILT-UP ROOFING
- △ - AREA DESIGNATION
- - ASBESTOS CONTAINING MATERIAL DESIGNATION

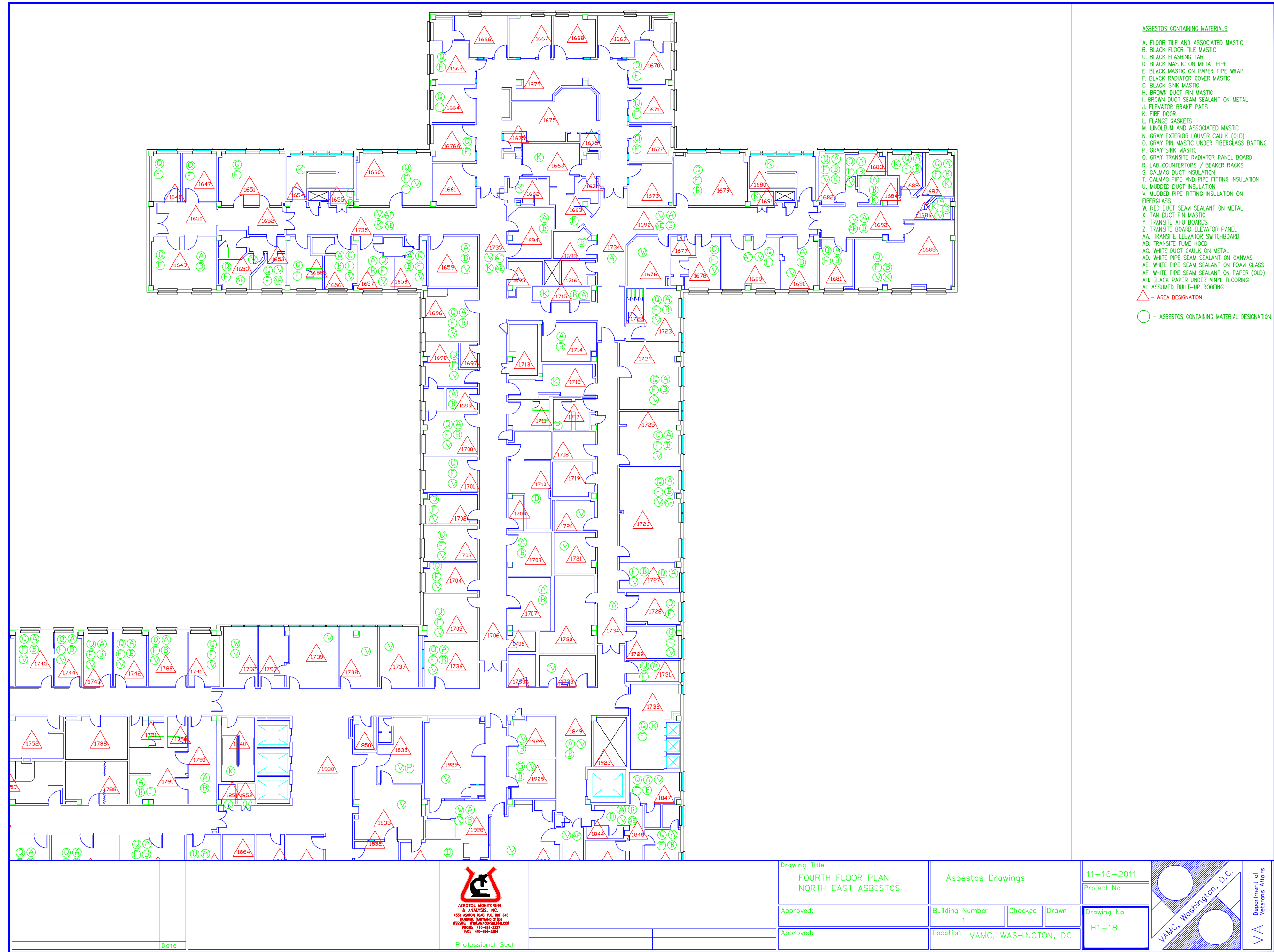
Date		 AEROSOL MONITORING & ANALYSIS, INC. 1431 JORDAN ROAD, P.O. BOX 448 DUNDY, MARYLAND 21078 REPRESENT: PINE HARBOR, INC. PHONE: 410-884-3327 FAX: 410-884-3324		Drawing Title THIRD FLOOR PLAN SOUTH WEST ASBESTOS		Asbestos Drawings		11-16-2011 Project No.		 VAMC, Washington, D.C.	Department of Veterans Affairs	
		Professional Seal		Approved:		Building Number 1		Checked				Drawing No. H1-16
				Approved:		Location VAMC, WASHINGTON, DC		Drawn				

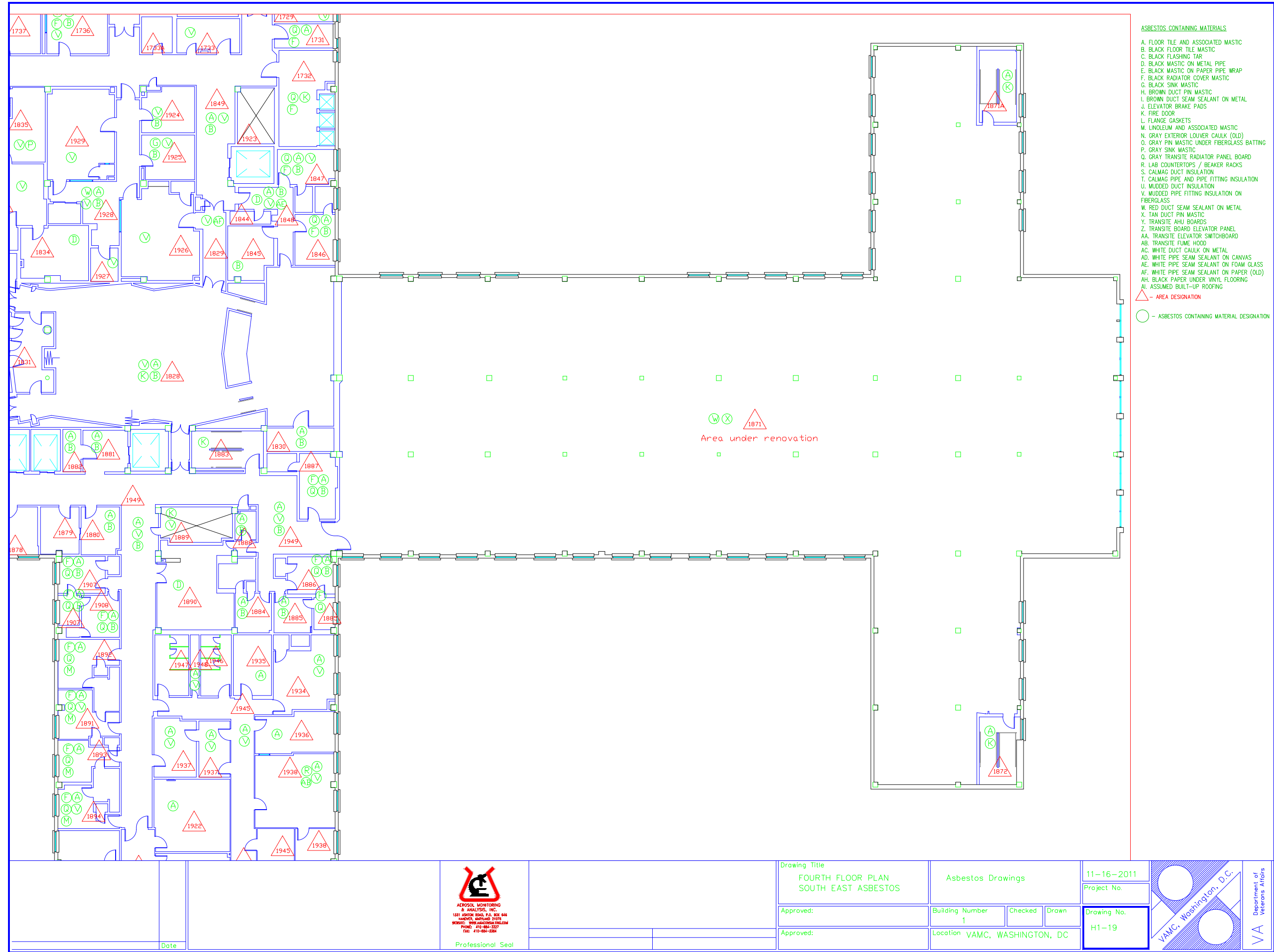


- ASBESTOS CONTAINING MATERIALS
- A. FLOOR TILE AND ASSOCIATED MASTIC
 - B. BLACK FLOOR TILE MASTIC
 - C. BLACK FLASHING TAR
 - D. BLACK MASTIC ON METAL PIPE
 - E. BLACK MASTIC ON PAPER PIPE WRAP
 - F. BLACK RADIATOR COVER MASTIC
 - G. BLACK SINK MASTIC
 - H. BROWN DUCT PIN MASTIC
 - I. BROWN DUCT SEAM SEALANT ON METAL
 - J. ELEVATOR BRAKE PADS
 - K. FIRE DOOR
 - L. FLANGE GASKETS
 - M. LINOLEUM AND ASSOCIATED MASTIC
 - N. GRAY EXTERIOR LOUVER CAULK (OLD)
 - O. GRAY PIN MASTIC UNDER FIBERGLASS BATTING
 - P. GRAY SINK MASTIC
 - Q. GRAY TRANSITE RADIATOR PANEL BOARD
 - R. LAB COUNTERTOPS / BEAKER RACKS
 - S. CALMAG DUCT INSULATION
 - T. CALMAG PIPE AND PIPE FITTING INSULATION
 - U. MUDDIED DUCT INSULATION
 - V. MUDDIED PIPE FITTING INSULATION ON FIBERGLASS
 - W. RED DUCT SEAM SEALANT ON METAL
 - X. TAN DUCT PIN MASTIC
 - Y. TRANSITE AHU BOARDS
 - Z. TRANSITE BOARD ELEVATOR PANEL
 - AA. TRANSITE ELEVATOR SWITCHBOARD
 - AB. TRANSITE FUME HOOD
 - AC. WHITE DUCT CAULK ON METAL
 - AD. WHITE PIPE SEAM SEALANT ON CANVAS
 - AE. WHITE PIPE SEAM SEALANT ON FOAM GLASS
 - AF. WHITE PIPE SEAM SEALANT ON PAPER (OLD)
 - AH. BLACK PAPER UNDER VINYL FLOORING
 - AL. ASSUMED BUILT-UP ROOFING
- △ - AREA DESIGNATION
- - ASBESTOS CONTAINING MATERIAL DESIGNATION

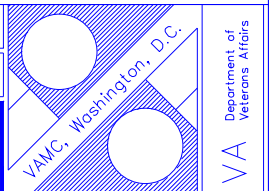
Date	 ACROSOL MONITORING & ANALYTICS, INC. 1551 ADDISON ROAD, P.O. BOX 646 ANNAPOLIS, MARYLAND 21401 WEBSITE: WWW.ACROSOLINC.COM PHONE: 410-484-3327 FAX: 410-484-3328	Drawing Title THIRD FLOOR PLAN NORTH WEST ASBESTOS		Asbestos Drawings		11-16-2011	
		Approved:	Approved:	Building Number 1	Checked	Drawn	Project No.
	Professional Seal	Approved:	Location VAMC, WASHINGTON, DC			Drawing No. H1-17	






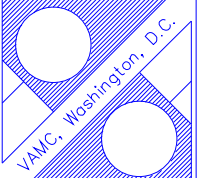


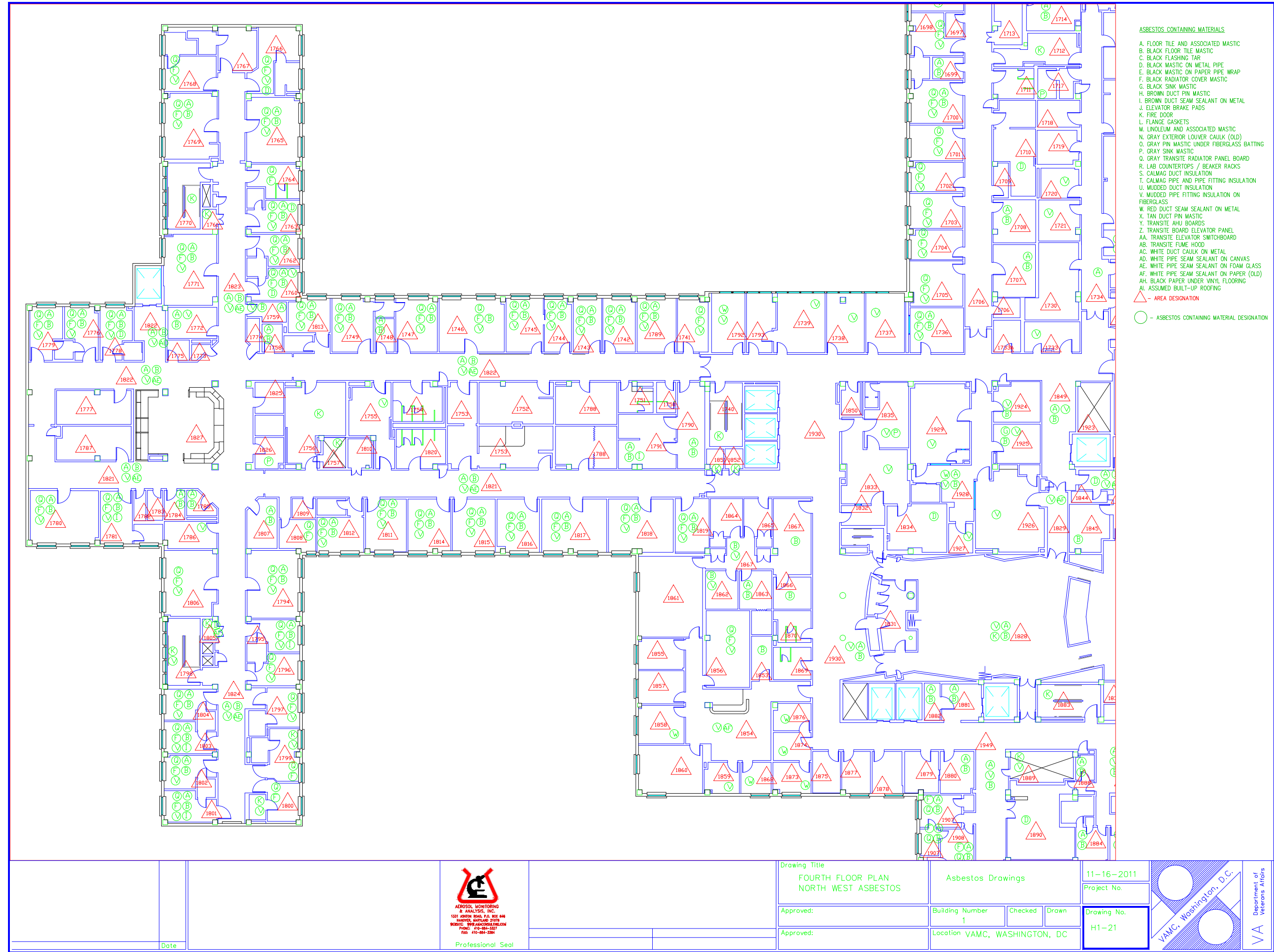
Drawing Title FOURTH FLOOR PLAN SOUTH EAST ASBESTOS		Asbestos Drawings		11-16-2011	
Approved:		Building Number 1		Project No.	
Approved:		Location VAMC, WASHINGTON, DC		Drawing No. H1-19	



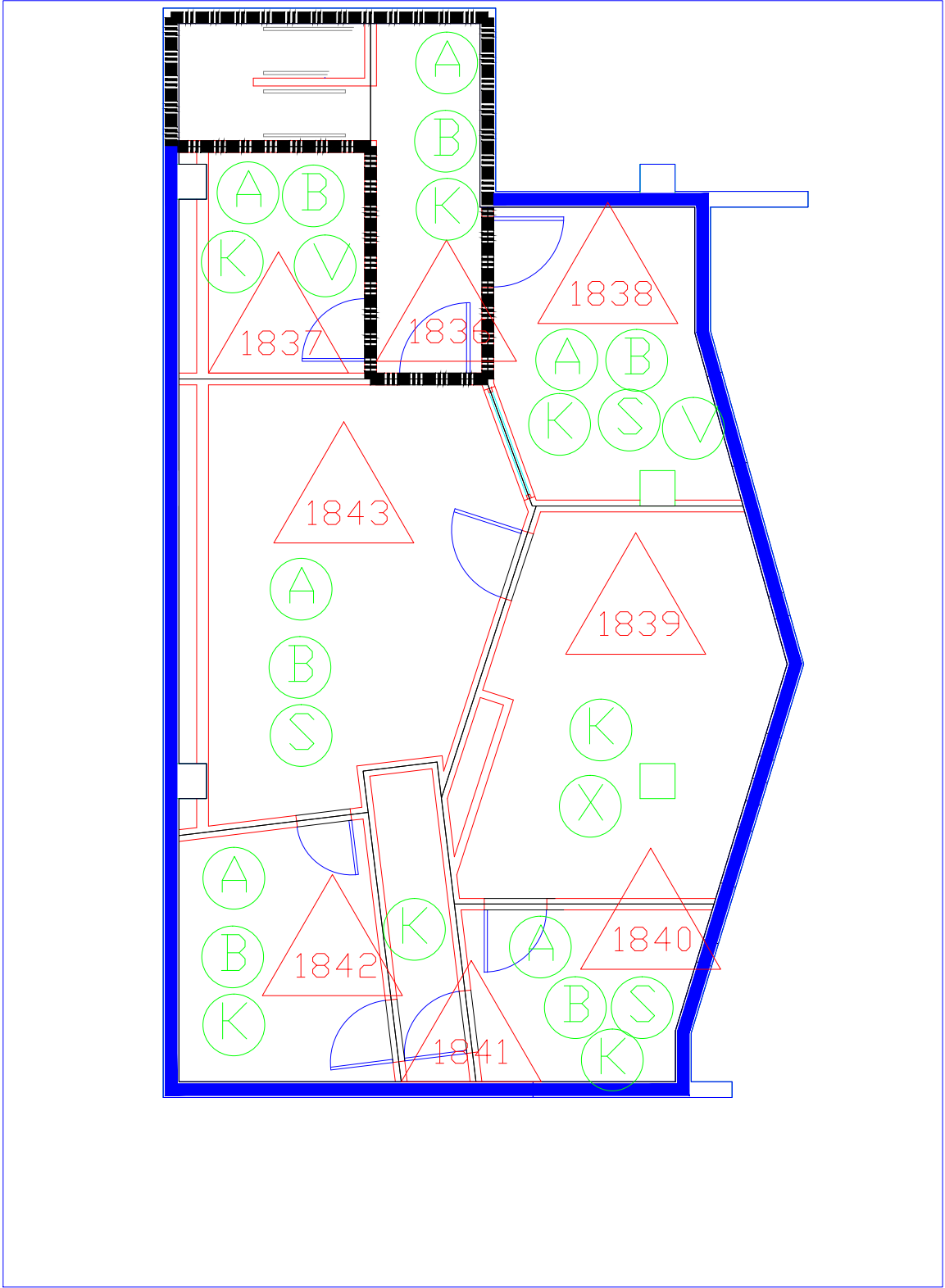


- ASBESTOS CONTAINING MATERIALS
- A. FLOOR TILE AND ASSOCIATED MASTIC
 - B. BLACK FLOOR TILE MASTIC
 - C. BLACK FLASHING TAR
 - D. BLACK MASTIC ON METAL PIPE
 - E. BLACK MASTIC ON PAPER PIPE WRAP
 - F. BLACK RADIATOR COVER MASTIC
 - G. BLACK SINK MASTIC
 - H. BROWN DUCT SEALANT ON METAL
 - I. ELEVATOR BRAKE PADS
 - J. FIRE DOOR
 - K. FLANGE GASKETS
 - L. LINOLEUM AND ASSOCIATED MASTIC
 - M. GRAY EXTERIOR LOUVER CAULK (OLD)
 - N. GRAY PIN MASTIC UNDER FIBERGLASS BATTING
 - O. GRAY SINK MASTIC
 - P. GRAY TRANSITE RADIATOR PANEL BOARD
 - Q. LAB COUNTERTOPS / BEAKER RACKS
 - R. CALMAG DUCT INSULATION
 - S. CALMAG PIPE AND PIPE FITTING INSULATION
 - T. MUDDIED DUCT INSULATION
 - U. MUDDIED PIPE FITTING INSULATION ON FIBERGLASS
 - V. RED DUCT SEAM SEALANT ON METAL
 - W. TAN DUCT PIN MASTIC
 - X. TRANSITE AHU BOARDS
 - Y. TRANSITE BOARD ELEVATOR PANEL
 - Z. TRANSITE ELEVATOR SWITCHBOARD
 - AA. TRANSITE FUME HOOD
 - AB. WHITE DUCT CAULK ON METAL
 - AC. WHITE PIPE SEAM SEALANT ON CANVAS
 - AD. WHITE PIPE SEAM SEALANT ON FOAM GLASS
 - AE. WHITE PIPE SEAM SEALANT ON PAPER (OLD)
 - AF. BLACK PAPER UNDER VINYL FLOORING
 - AI. ASSUMED BUILT-UP ROOFING
- △ - AREA DESIGNATION
- - ASBESTOS CONTAINING MATERIAL DESIGNATION

Date	 ACROSOL MONITORING & ANALYSIS, INC. 1531 ASHTON ROAD, P.O. BOX 844 MANVILLE, MONTANA 59701 WEBSITE: WWW.ACROSOLINC.COM PHONE: 406-884-5327 FAX: 406-884-5384	Professional Seal	Drawing Title FOURTH FLOOR PLAN SOUTH WEST ASBESTOS	Asbestos Drawings	11-16-2011 Project No.	 VAMC, Washington, D.C.	Department of Veterans Affairs
			Approved: Approved:	Building Number 1 Location VAMC, WASHINGTON, DC	Checked Drawing No. H1-20		



- ASBESTOS CONTAINING MATERIALS
- A. FLOOR TILE AND ASSOCIATED MASTIC
 - B. BLACK FLOOR TILE MASTIC
 - C. BLACK FLASHING TAR
 - D. BLACK MASTIC ON METAL PIPE
 - E. BLACK MASTIC ON PAPER PIPE WRAP
 - F. BLACK RADIATOR COVER MASTIC
 - G. BLACK SINK MASTIC
 - H. BROWN DUCT PIN MASTIC
 - I. BROWN DUCT SEAM SEALANT ON METAL
 - J. ELEVATOR BRAKE PADS
 - K. FIRE DOOR
 - L. FLANGE GASKETS
 - M. LINOLEUM AND ASSOCIATED MASTIC
 - N. GRAY EXTERIOR LOUVER CAULK (OLD)
 - O. GRAY PIN MASTIC UNDER FIBERGLASS BATTING
 - P. GRAY SINK MASTIC
 - Q. GRAY TRANSITE RADIATOR PANEL BOARD
 - R. LAB COUNTERTOPS / BEAKER RACKS
 - S. CALMAG DUCT INSULATION
 - T. CALMAG PIPE AND PIPE FITTING INSULATION
 - U. MUDDER DUCT INSULATION
 - V. MUDDER PIPE FITTING INSULATION ON FIBERGLASS
 - W. RED DUCT SEAM SEALANT ON METAL
 - X. TAN DUCT PIN MASTIC
 - Y. TRANSITE AHU BOARDS
 - Z. TRANSITE BOARD ELEVATOR PANEL
 - AA. TRANSITE ELEVATOR SWITCHBOARD
 - AB. TRANSITE FUME HOOD
 - AC. WHITE DUCT CAULK ON METAL
 - AD. WHITE PIPE SEAM SEALANT ON CANVAS
 - AE. WHITE PIPE SEAM SEALANT ON FOAM GLASS
 - AF. WHITE PIPE SEAM SEALANT ON PAPER (OLD)
 - AH. BLACK PAPER UNDER VINYL FLOORING
 - AI. ASSUMED BUILT-UP ROOFING
- △ - AREA DESIGNATION
- - ASBESTOS CONTAINING MATERIAL DESIGNATION

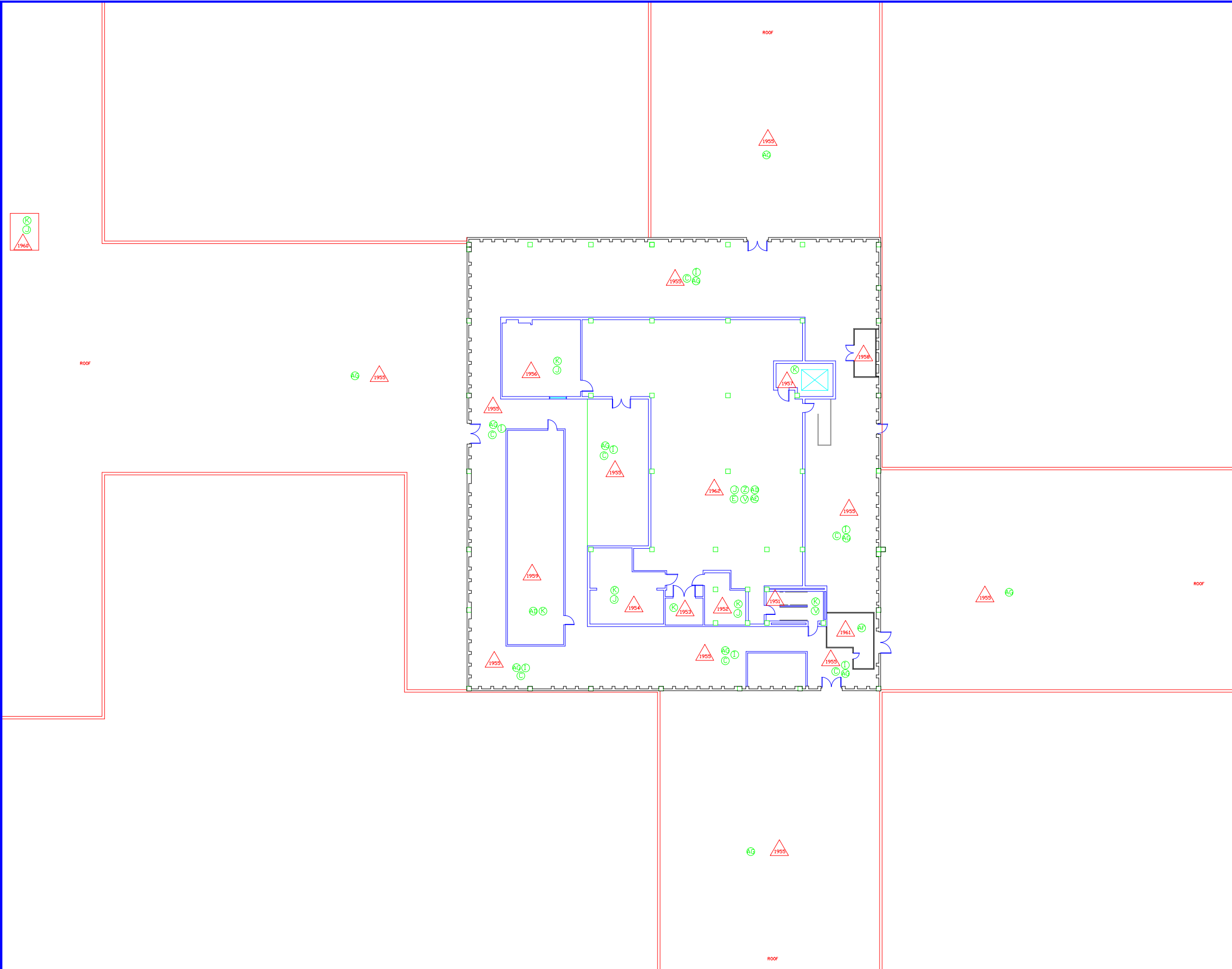


Date	Professional Seal		MEZZANINE FLOOR PLAN ASBESTOS	Approved:	Asbestos Drawings		11-16-2011		Department of Veterans Affairs
				Approved:	Building Number 1	Checked	Drawn		
				Location VAMC, WASHINGTON, DC					

ASBESTOS CONTAINING MATERIALS

- A. FLOOR TILE AND ASSOCIATED MASTIC
- B. BLACK FLOOR TILE MASTIC
- C. BLACK FLASHING TAR
- D. BLACK MASTIC ON METAL PIPE
- E. BLACK MASTIC ON PAPER PIPE WRAP
- F. BLACK RADIATOR COVER MASTIC
- G. BLACK SINK MASTIC
- H. BROWN DUCT PIN MASTIC
- I. BROWN DUCT SEAM SEALANT ON METAL
- J. ELEVATOR BRAKE PADS
- K. FIRE DOOR
- L. FLANGE GASKETS
- M. LINOLEUM AND ASSOCIATED MASTIC
- N. GRAY EXTERIOR LOUVER CAULK (OLD)
- O. GRAY PIN MASTIC UNDER FIBERGLASS BATTING
- P. GRAY SINK MASTIC
- Q. GRAY TRANSITE RADIATOR PANEL BOARD
- R. LAB COUNTERTOPS / BEAKER RACKS
- S. CALMAG DUCT INSULATION
- T. CALMAG PIPE AND PIPE FITTING INSULATION
- U. MUDDIED DUCT INSULATION
- V. MUDDIED PIPE FITTING INSULATION ON FIBERGLASS
- W. RED DUCT SEAM SEALANT ON METAL
- X. TAN DUCT PIN MASTIC
- Y. TRANSITE AHU BOARDS
- Z. TRANSITE BOARD ELEVATOR PANEL
- AA. TRANSITE ELEVATOR SWITCHBOARD
- AB. TRANSITE FUME HOOD
- AC. WHITE DUCT CAULK ON METAL
- AD. WHITE PIPE SEAM SEALANT ON CANVAS
- AE. WHITE PIPE SEAM SEALANT ON FOAM GLASS
- AF. WHITE PIPE SEAM SEALANT ON PAPER (OLD)
- AH. BLACK PAPER UNDER VINYL FLOORING
- AI. ASSUMED BUILT-UP ROOFING

△ - AREA DESIGNATION
○ - ASBESTOS CONTAINING MATERIAL DESIGNATION



Date	Professional Seal		PENTHOUSE FLOOR PLAN ASBESTOS		Asbestos Drawings		11-16-2011	
			Approved:	Building Number 1	Checked	Drawn	Project No.	
			Approved:	Location VAMC, WASHINGTON, DC			Drawing No. H1-23	

VAMC, Washington, D.C.
Department of Veterans Affairs