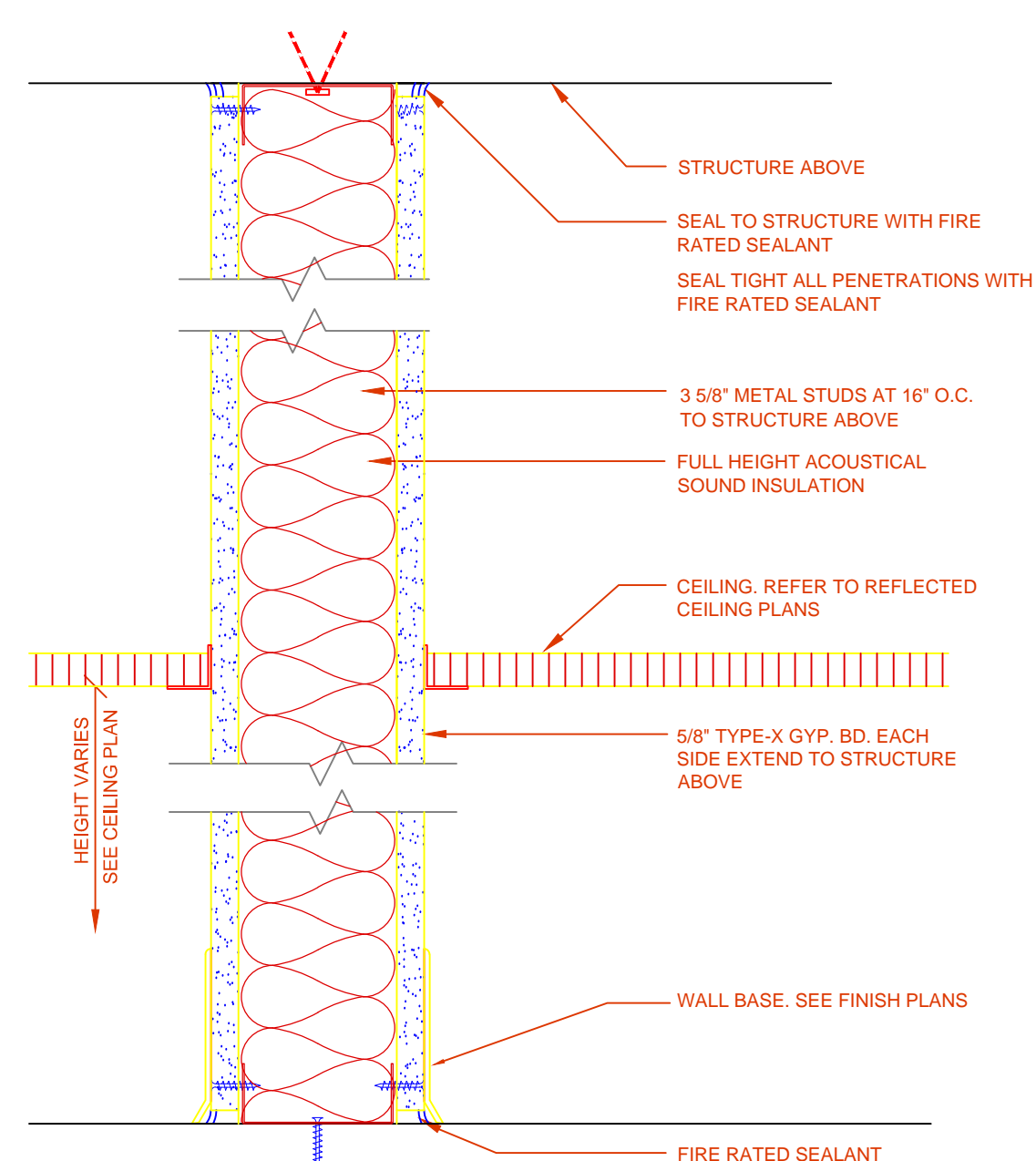
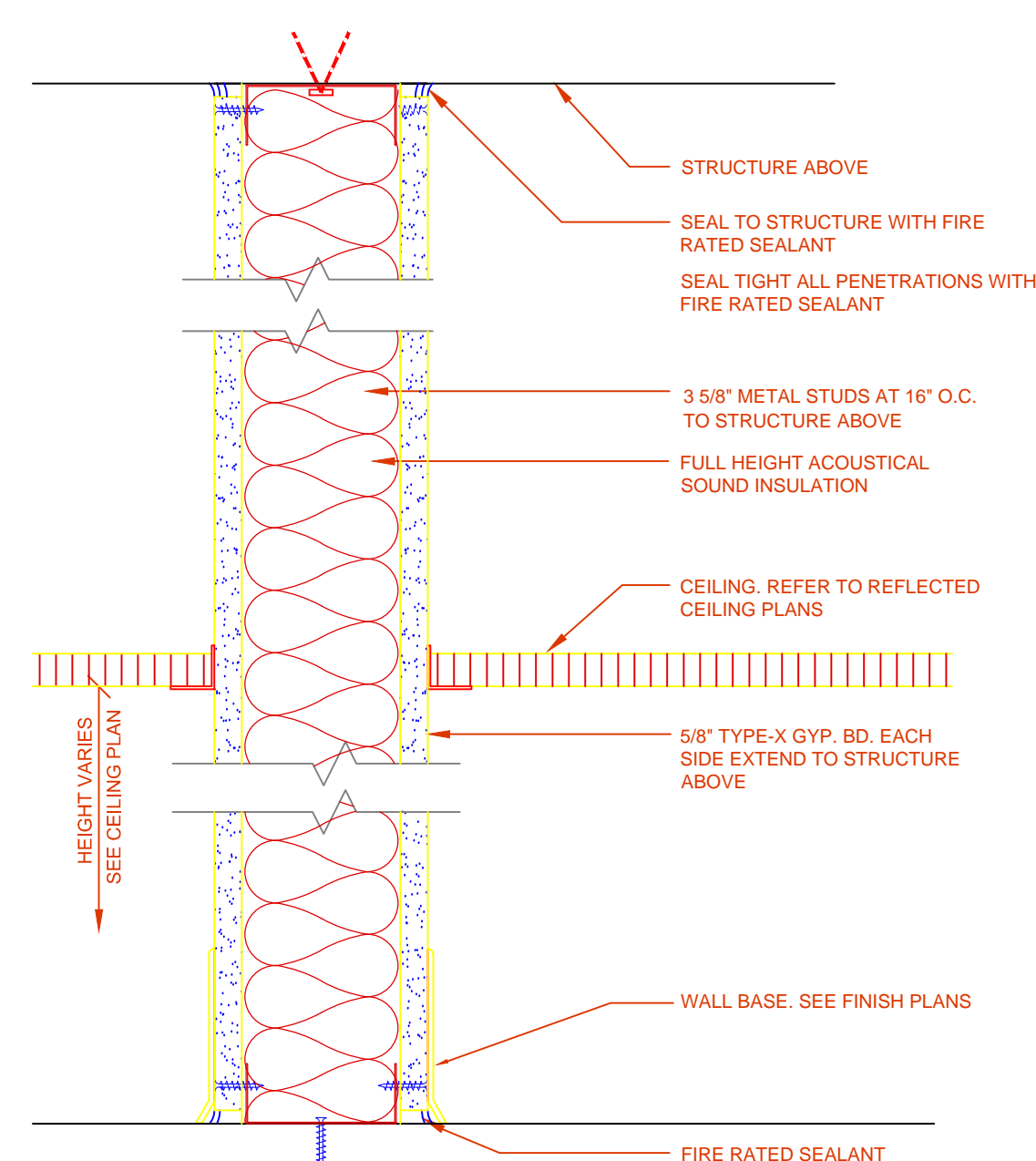


1 SECTION: DUST PARTITION

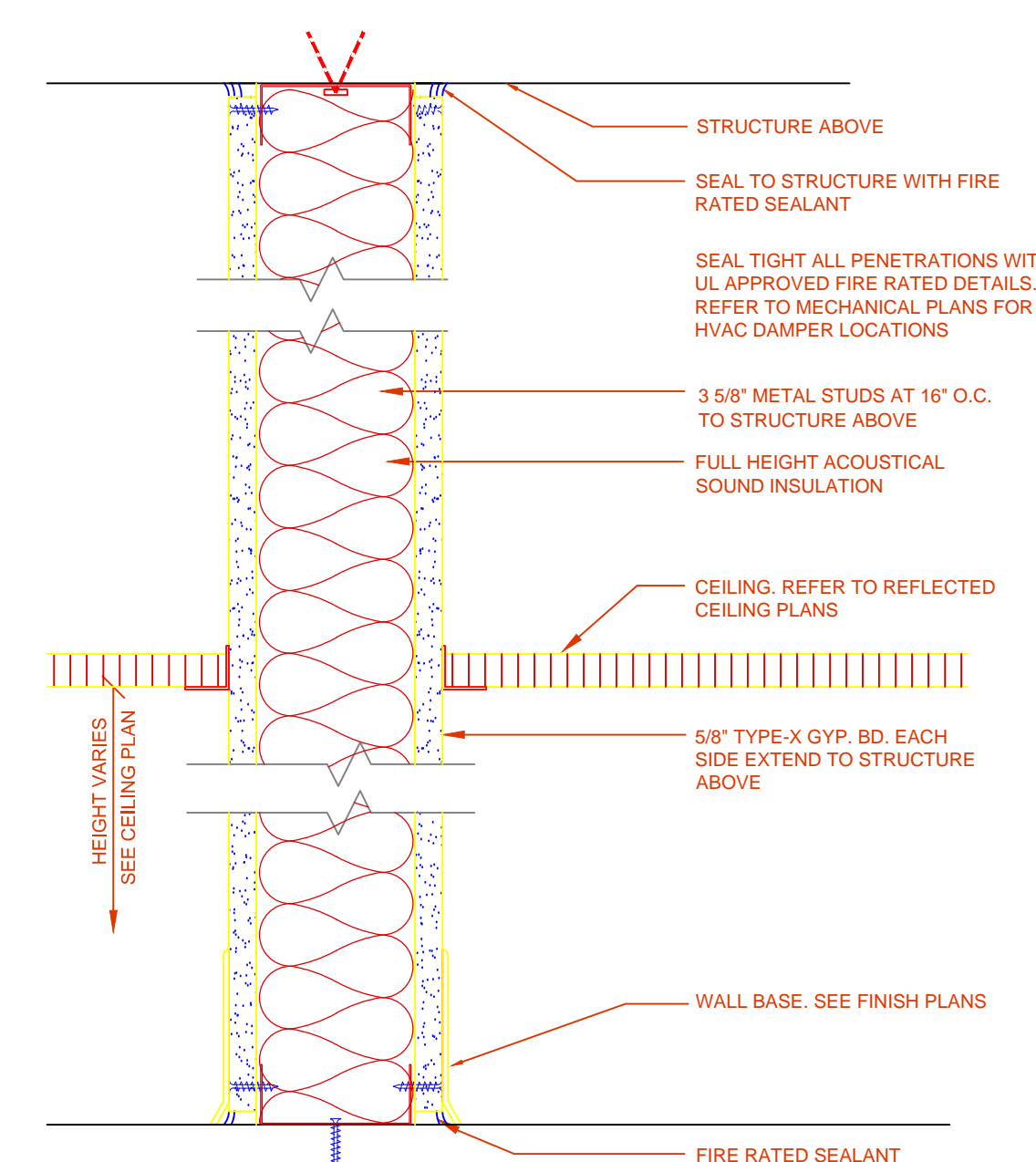


2 SECTION: TYPICAL FULL-HEIGHT PARTITION

09650 09-03E SCALE: 3" = 1'-0"

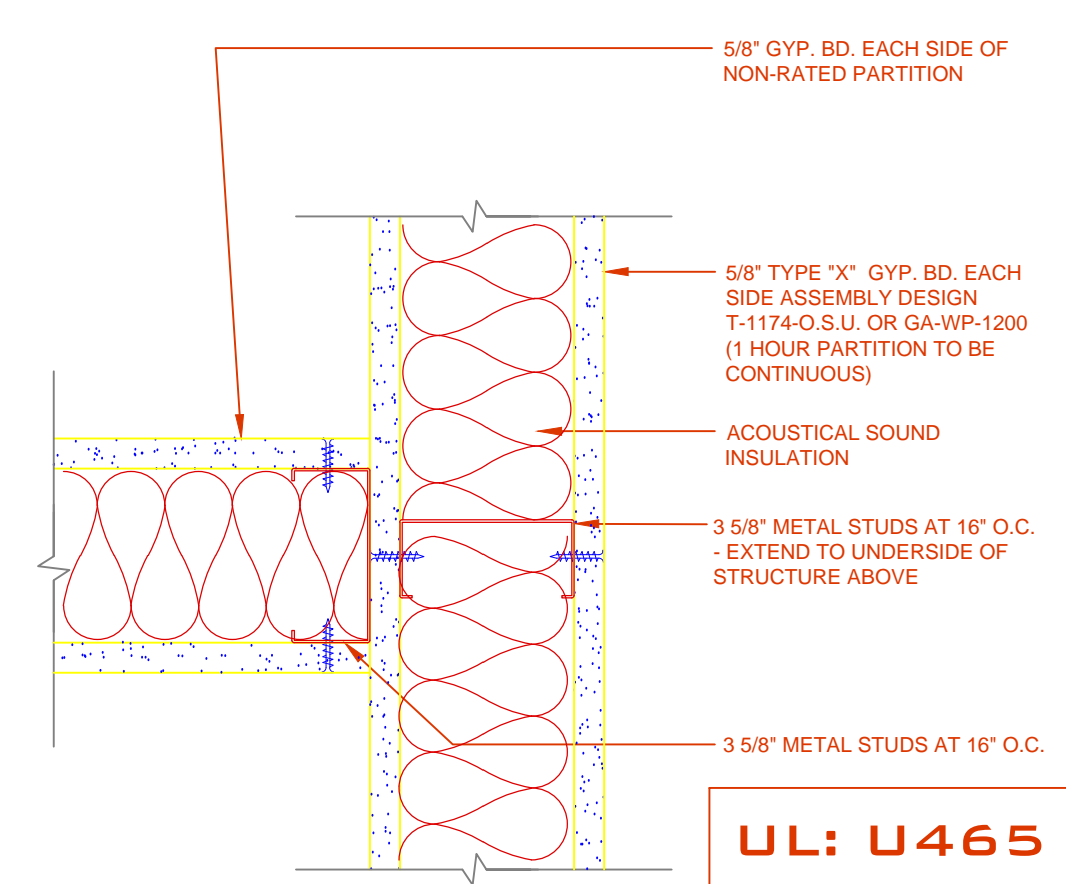


2 SECTION: SMOKE TIGHT PARTITION



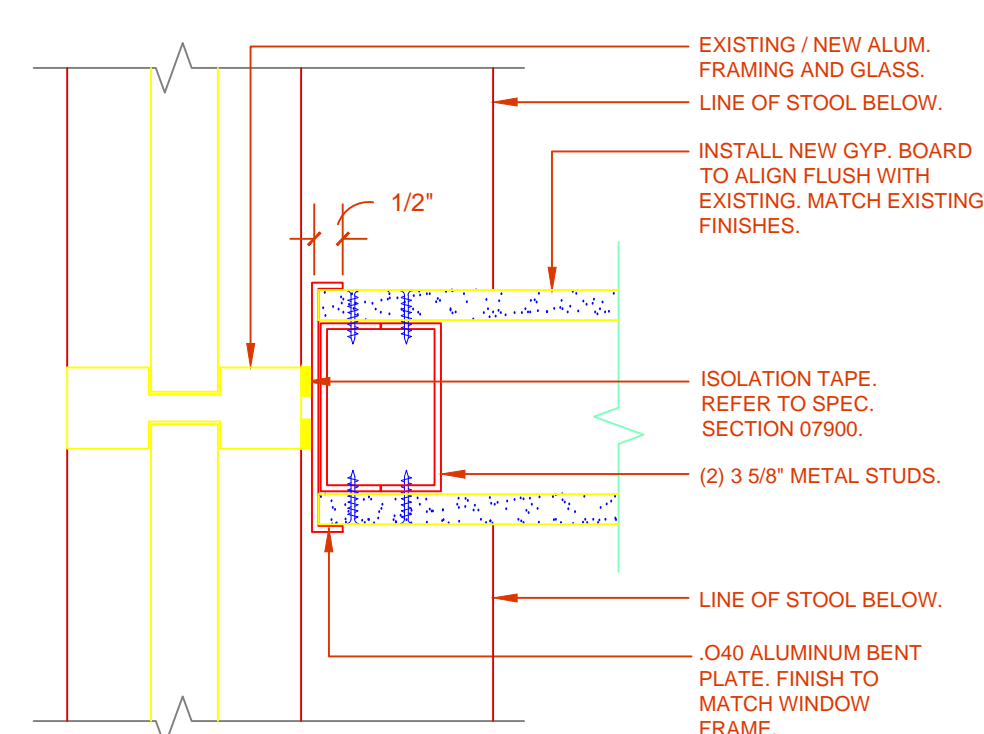
3 SECTION: 1-HOUR
RATED PARTITION

09250 09-04 SCALE: 3"=1'-0"

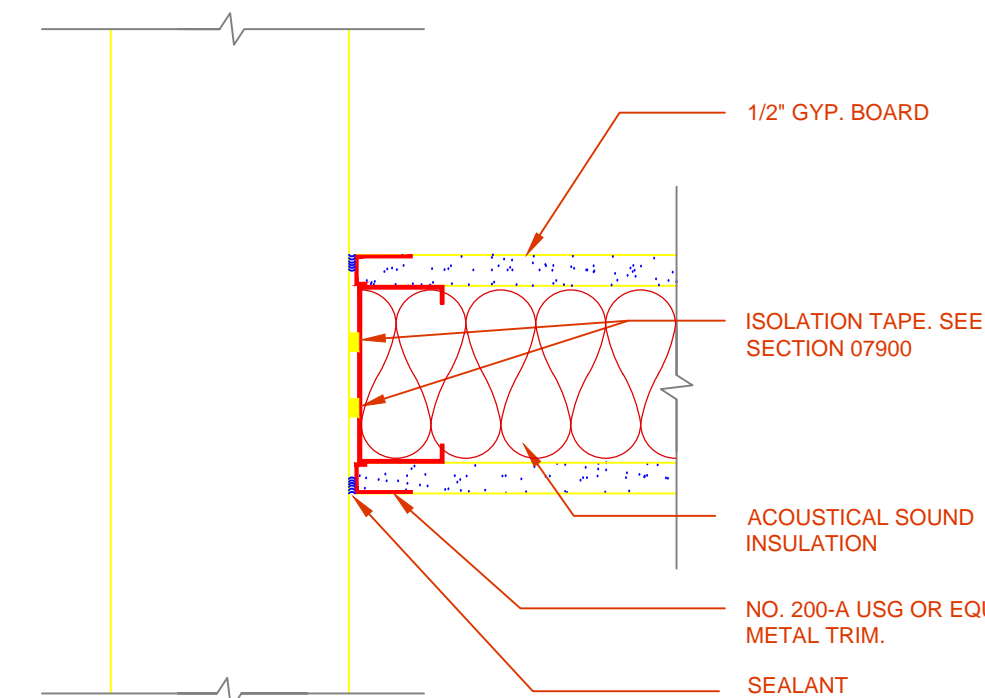


4 SECTION: NON-RATED WALL AT 1 HOUR RATED WALL

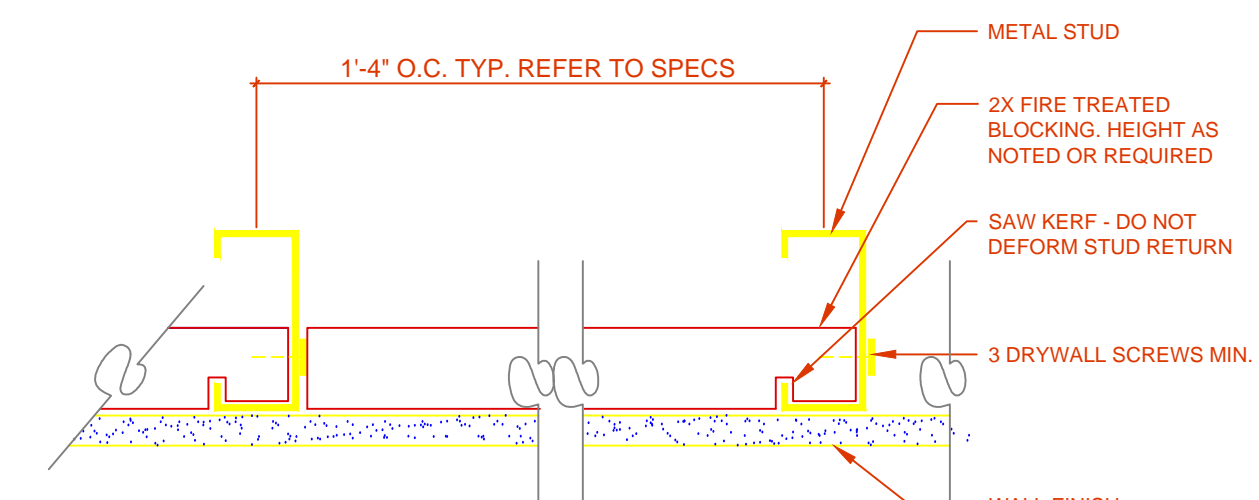
09650 09-09 SCALE: 3" = 1'-0"



5 DETAIL: PARTITION AT WINDOW MULLION

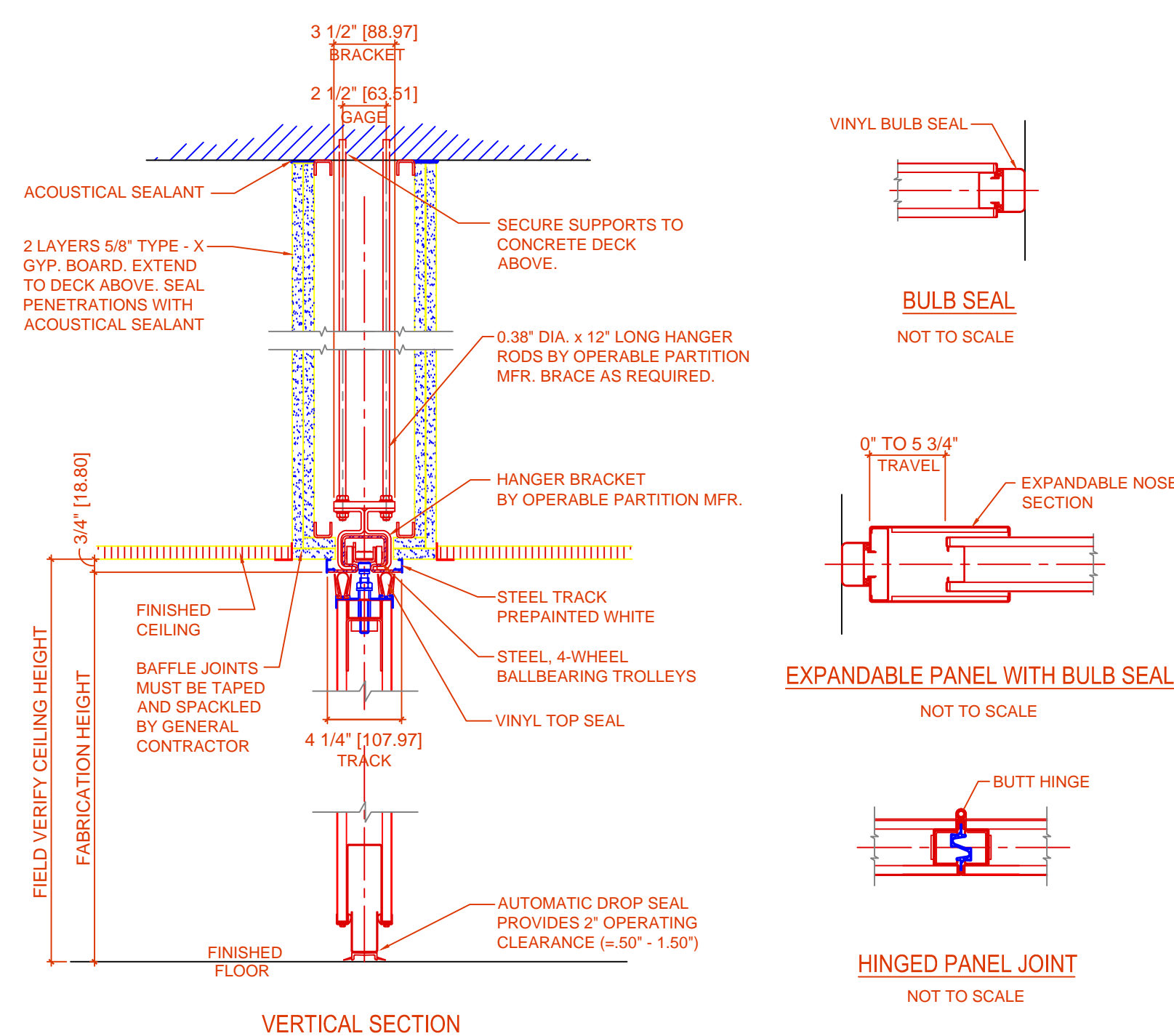


6 DETAIL: PARTITION AT WALL BELOW WINDOW



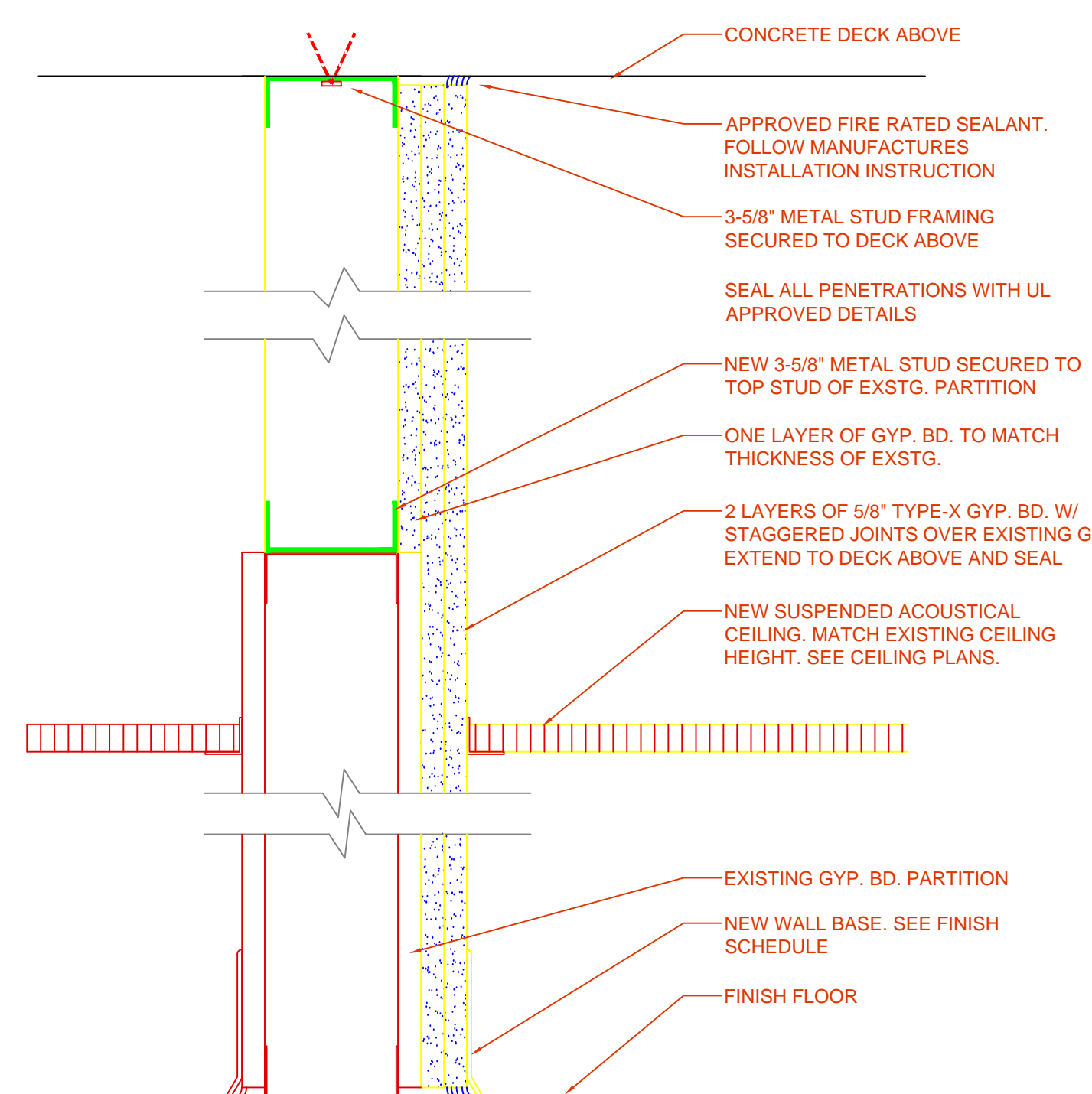
7 DETAIL: BLOCKING AT WALL STUDS

09650 09-10B SCALE: 3"=1'-0"

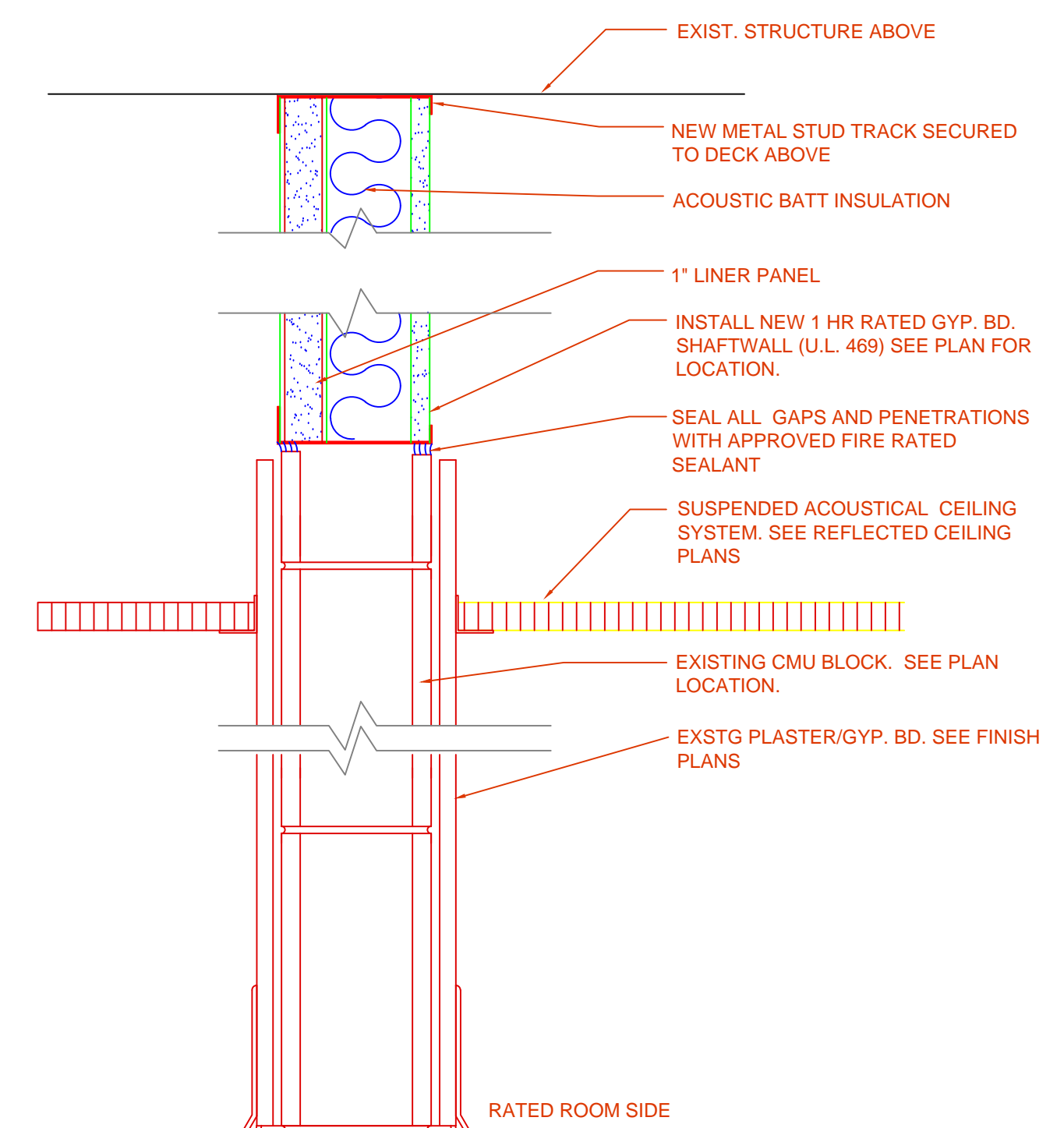


8 DETAIL: TRACK

SCALE: 1 1/2" = 1'-0"

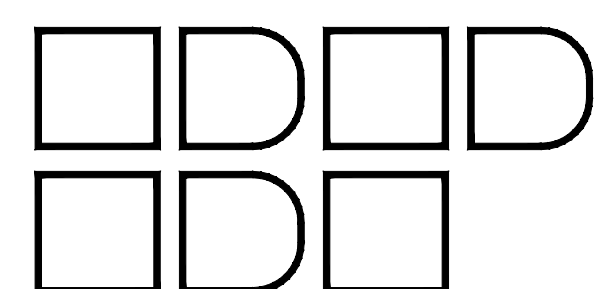


9 SECTION: EXISTING GYP. BD. PARTITION TO 1-HOUR CONSTRUCTION

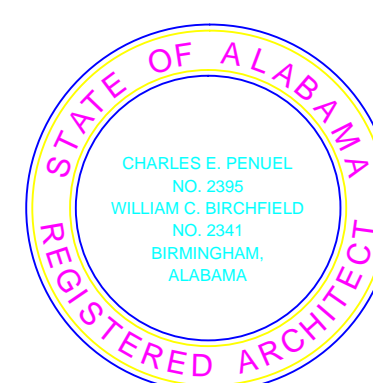


10 SECTION: EXISTING CMU PARTITION MODIFIED TO 1-HOUR CONSTRUCTION

SCALE: 3"=1'-0"

[illegible]

2805 CRESCENT AVENUE • SUITE 200 • BIRMINGHAM, ALABAMA 35209



Department of Veterans Affairs
MEDICAL CENTER
BIRMINGHAM, ALABAMA

Drawing Title 7th. FLOOR AND 8th. FLOOR DETAILS		Project Title RENOVATE SPACE FOR REHAB AND PHYSICAL MEDICINE		Date: 08-02-11	
				VA Project No. 521-10-101	
				CAD File No. 10709A6.1.dwg	
		Building Numbers		Checked	
				Drawn	
				DRAWING NO. A6.1	
		Location VA MEDICAL CENTER BIRMINGHAM, ALABAMA		Dwg. of	

FINAL SUBMITTAL