

7TH FLOOR BLOCK "B" HVAC DUCTWORK NEW WORK PLAN

1/8" = 1'-0"

GENERAL NOTES: (THIS SHEET ONLY)

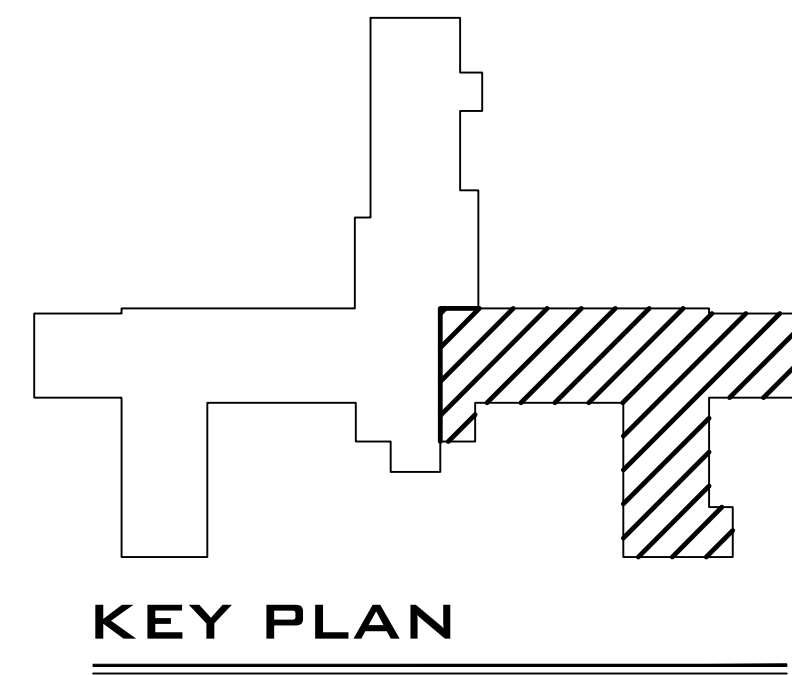
1. BASE BID: FOR ALL FAN COIL UNITS SHOWN IN THIS SECTOR. REMOVE EXISTING BUILDING HVAC CONTROLS / CONTROLS COMPONENTS AND INSTALL NEW JOHNSON METASYS DDC COMPONENTS. INSTALL NEW CONTROL VALVES, SENSORS, AND APPLICATION SPECIFIC CONTROLLER REQUIRED TO OBTAIN A MINIMUM OF THE FOLLOWING INPUTS AND OUTPUTS FOR EACH NEW AND EXISTING COOLING/HEATING UNIT:

- SPACE SETPOINT
- SPACE TEMPERATURE
- SUPPLY AIR TEMPERATURE
- RETURN AIR TEMPERATURE
- COOLING VALVE POSITION
- HEATING VALVE POSITION
- FAN START/STOP
- FAN STATUS
- EFFECTIVE COOLING SETPOINT
- EFFECTIVE HEATING SETPOINT
- OCCUPIED/UNOCCUPIED MODE
- OCCUPIED SCHEDULE
- HOT WATER RETURN TEMPERATURE
- HOT WATER SUPPLY TEMPERATURE
- MIXED AIR TEMPERATURE
- CHILLED WATER SUPPLY TEMPERATURE
- CHILLED WATER RETURN TEMPERATURE
- OUTSIDE AIR TEMPERATURE
- FILTER STATUS

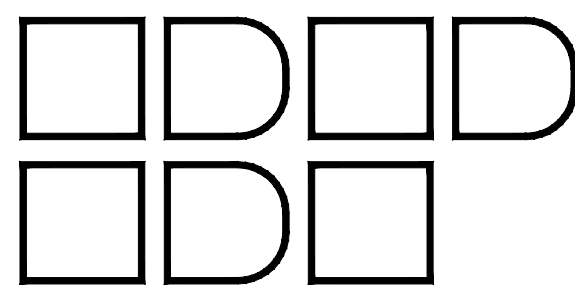
INSTALL NEW JOHNSON METASYS DDC COMPONENTS REQUIRED TO PROVIDE FAN STATUS FOR EACH NEW AND EXISTING FAN.

UPDATE EXISTING BUILDING SOFTWARE AND HARDWARE AS REQUIRED.

2. DEDUCTIVE ALTERNATE: REPLACE CONTROLS AS DETAILED ABOVE FOR ONLY THE UNITS THAT ARE BEING MOVED OR ATTACHED DUCT WORK IS REPLACED.



Whitaker & Rawson, Inc.
3332 Old Montgomery Hwy
Suite 103 Mark Harris Bldg
Birmingham, AL 35209
Phone: 205-870-4801
Fax: 205-870-9891
www.whitakerandrawson.com
Mechanical Doug Rawson
Direct Line - (205) 870-4801
Planting: Carol Johnson
Direct Line - (205) 949-5123



BIRCHFIELD
PENUEL &
ASSOCIATES,
ARCHITECTS

2805 CRESCENT AVENUE • SUITE 200 • BIRMINGHAM, ALABAMA 35209

Department of Veterans Affairs
MEDICAL CENTER
BIRMINGHAM, ALABAMA

Drawing Title
7TH FLOOR BLOCK "B"
HVAC DUCTWORK NEW WORK PLANS

Project Title
RENOVATE SPACE FOR REHAB
AND PHYSICAL MEDICINE

Building Numbers
Checked
DER
Drawn
JRB

Location
VA MEDICAL CENTER BIRMINGHAM, ALABAMA

Date: 08-12-11

VA Project No. 521-10-101

CAD File No. 4608A01

Drawing NO.
M1.2-B

Dwg. Of

Veterans
Administration