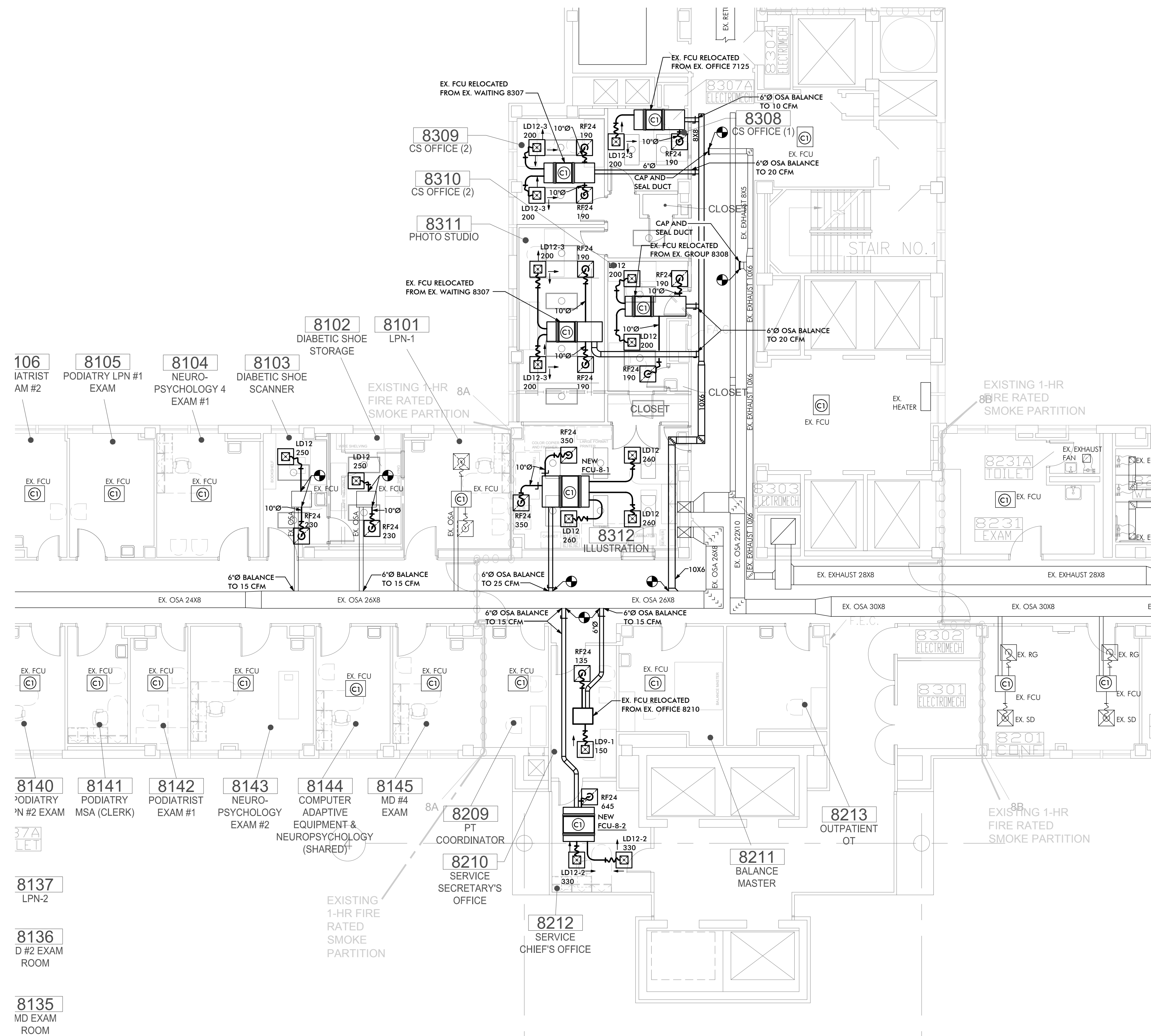


1 8TH FLOOR BLOCK "A" HVAC PIPING NEW WORK PLAN
1/8" = 1'-0"



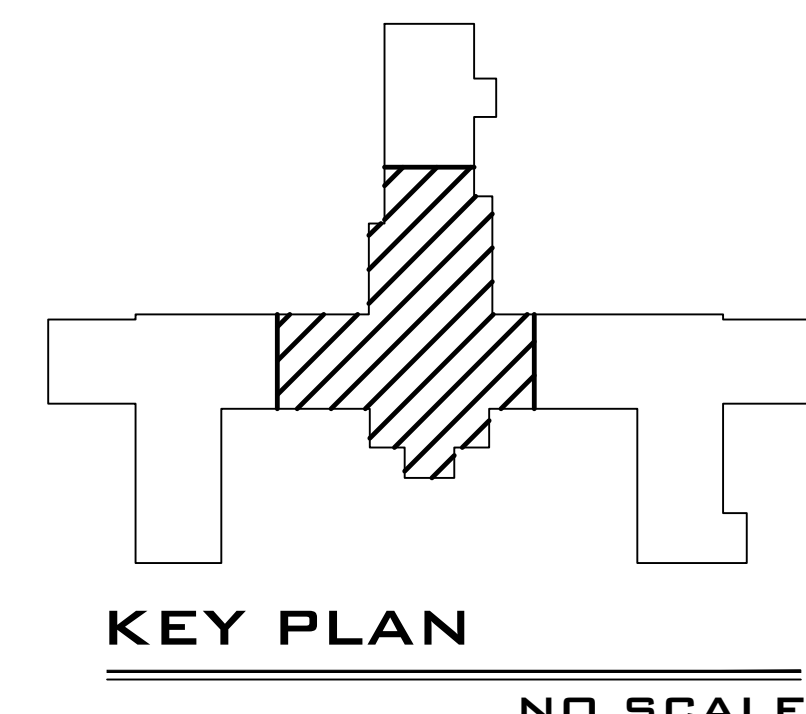
1 8TH FLOOR BLOCK "A" HVAC DUCTWORK NEW WORK PLAN
1/8" = 1'-0"

CONTROL NOTES (THIS SHEET ONLY)

1. BASE BID: FOR ALL FAN COIL UNITS SHOWN IN THIS SECTOR, REMOVE EXISTING BUILDING HVAC CONTROLS / CONTROLS COMPONENTS AND INSTALL NEW JOHNSON METASYS DDC COMPONENTS. INSTALL NEW CONTROL VALVES, SENSORS, AND APPLICATION SPECIFIC CONTROLLER REQUIRED TO OBTAIN A MINIMUM OF THE FOLLOWING INPUTS AND OUTPUTS FOR EACH NEW AND EXISTING COOLING/HEATING UNIT.
 - SPACE SETPOINT
 - SPACE TEMPERATURE
 - SUPPLY AIR TEMPERATURE
 - RETURN AIR TEMPERATURE
 - COOLING VALVE POSITION
 - HEATING VALVE POSITION
 - FAN START/STOP
 - FAN STATUS
 - EFFECTIVE COOLING SETPOINT
 - EFFECTIVE HEATING SETPOINT
 - OCCUPIED/UNOCCUPIED MODE
 - OCCUPIED SCHEDULE
 - HOT WATER RETURN TEMPERATURE
 - HOT WATER SUPPLY TEMPERATURE
 - MIXED AIR TEMPERATURE
 - CHILLED WATER SUPPLY TEMPERATURE
 - CHILLED WATER RETURN TEMPERATURE
 - OUTSIDE AIR TEMPERATURE
 - FILTER STATUS
2. DEDUCTIVE ALTERNATE: REPLACE CONTROLS AS DETAILED ABOVE FOR ONLY THE UNITS THAT ARE BEING MOVED OR ATTACHED DUCT WORK IS REPLACED.

INSTALL NEW JOHNSON METASYS DDC COMPONENTS REQUIRED TO PROVIDE FAN STATUS FOR EACH NEW AND EXISTING FAN.

UPDATE EXISTING BUILDING SOFTWARE AND HARDWARE AS REQUIRED.



Whitaker & Rawson, Inc.
3332 Old Montgomery Hwy
Suite 103 Mark Harris Bldg
Birmingham, AL 35209
Phone: 205-870-0801
Fax: 205-870-0891
www.whitakerandrawson.com
Mechanical: Doug Rawson
Direct Line: (205) 870-0801
Planning: Carol Johnson
Direct Line: (205) 949-5123

**BIRCHFIELD
PENUEL &
ASSOCIATES,
ARCHITECTS**
2805 CRESCENT AVENUE • SUITE 200 • BIRMINGHAM, ALABAMA 35209

**Department of Veterans Affairs
MEDICAL CENTER
BIRMINGHAM, ALABAMA**

Drawing Title
8TH FLOOR BLOCK "A"
HVAC NEW WORK PLANS

Project Title
RENOVATE SPACE FOR REHAB
AND PHYSICAL MEDICINE

Date: 08-12-11

VA Project No. 521-10-101

CAD File No. 4608A01

Building Numbers

Checked

DER

Drawn

JRB

Location
VA MEDICAL CENTER BIRMINGHAM, ALABAMA

Drawing NO.

M2.2-A

Dwg. Of

**Veterans
Administration**

FINAL SUBMITTAL