

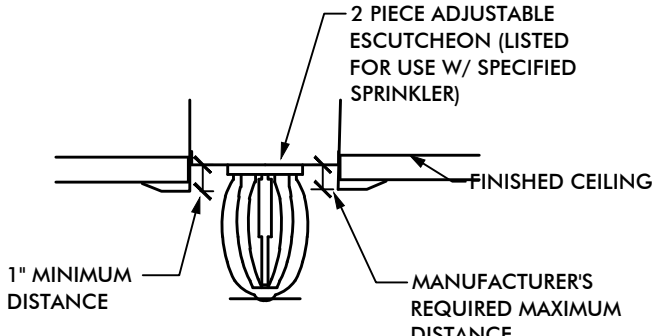
FIRE PROTECTION SCHEDULES, LEGENDS, NOTES, AND DETAILS

FIRE REFLECTED CEILING LEGEND	
CEILING TYPE	SPRINKLER HEAD TYPE
2'x2' ACOUSTICAL LAY-IN CEILING & GRID	RECESSED, EXISTING, & DEMO SPRINKLER HEADS
GYPSUM BOARD CEILING	RECESSED, EXISTING, & DEMO SPRINKLER HEADS
GENERAL NOTES: 1. DRAWINGS ARE FOR GRAPHIC PURPOSES ONLY. CONTRACTOR TO VERIFY ALL BUILDING DIMENSIONS & ALL LOCATIONS OF DIFFUSERS, LIGHTS, MECHANICAL DUCTS, ETC. IN FIELD. BEFORE SUBMITTING BID. 2. REFER TO ARCHITECTURAL REFLECTED CEILING PLAN FOR NEW WORK CEILING TYPE.	

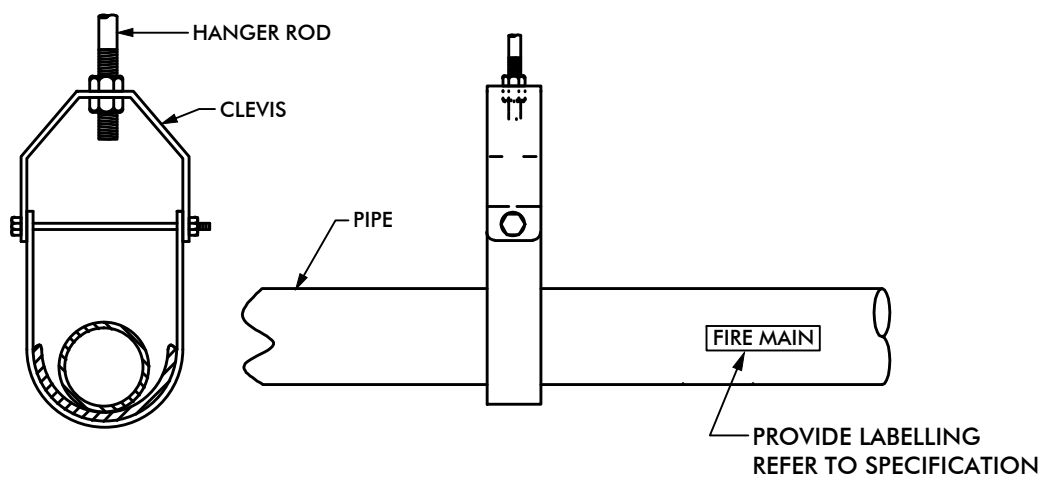
FIRE PROTECTION LEGEND	
DEMOLITION SPRINKLER HEAD - TO BE REMOVED, PROVIDE HEADS AS REQUIRED.	FIRE LINE - MAIN
EXISTING SPRINKLER HEAD - TO REMAIN	PIPE TURNING UP
EXISTING SPRINKLER HEAD - TO REMAIN	PIPE TURNING DOWN
SPRINKLER HEAD - RECESSED PENDENT	GPM
SPRINKLER HEAD - UPRIGHT PENDENT	GALLONS PER MINUTE

FIRE SUPPRESSION HYDRAULIC DEMANDS	
1. SPRINKLER PROTECTION: a. ALL PATIENT CARE, SLEEPING, TREATMENT, OFFICE, WAITING AREAS, EDUCATIONAL AREAS, DINING AREAS, CORRIDORS AND ATTICS: LIGHT HAZARD, 0.10 GPM/SQ. FT. OVER THE HYDRAULICALLY MOST REMOTE 1500 SQ. FT. b. MECHANICAL EQUIPMENT ROOMS, TRANSFORMER ROOMS, ELECTRICAL SWITCHGEAR ROOMS, ELECTRIC CLOSETS (ELEVATOR SHAFTS IF REQUIRED), ELEVATOR MACHINE ROOMS, AND STORAGE BETWEEN 150 AND 200 SQ. FT. - ORDINARY HAZARD, GROUP 1, 0.15 GPM/SQ. FT. OVER THE HYDRAULICALLY MOST REMOTE 1500 SQ. FT. c. CLEAN AND SOILED LINEN ROOMS, TRASH ROOMS, CLEAN AND SOILED UTILITY ROOMS, LABORATORY, AND STORAGE ROOMS, STORAGE ROOMS OVER 200 SQ. FT. AND PHARMACY AREAS: ORDINARY GROUP 2, 0.20 GPM/SQ. FT. OVER THE HYDRAULICALLY MOST REMOTE 1500 SQ. FT. d. PROVIDE SPRINKLERS IN ACCESSIBLE SHAFTS PER NFPA 13 LATEST EDITION. e. PROVIDE SPRINKLERS IN GRAVITY TYPE METAL CHUTES PER NFPA 82. f. ADD WATER ALLOWANCE OF 250 GPM FOR INSIDE AND OUTSIDE HOSE STREAMS TO THE SPRINKLER REQUIREMENTS AT THE CONNECTION TO THE DISTRIBUTION MAIN. 2. HYDRAULIC CALCULATIONS: THE CALCULATED DEMAND INCLUDING HOSE STREAM REQUIREMENTS SHALL FALL NO LESS THAN 10 PERCENT BELOW THE AVAILABLE SUPPLY CURVE. 3. COMPLY WITH IBC (2009 EDITION), NFPA 13 (2009 EDITION), NATIONAL ELECTRIC CODE, NFPA 72, NATIONAL ALARM AND SIGNALING CODE, AND NFPA 101, LIFE SAFETY CODE (2009 EDITION). 4. WHEN HYDRAULIC CALCULATIONS ARE CALCULATED TO BUILDING STAND PIPE, CONTRACTOR REQUIRED TO PROVIDE CURRENT STANDPIPE AND FIRE PUMP TEST.	

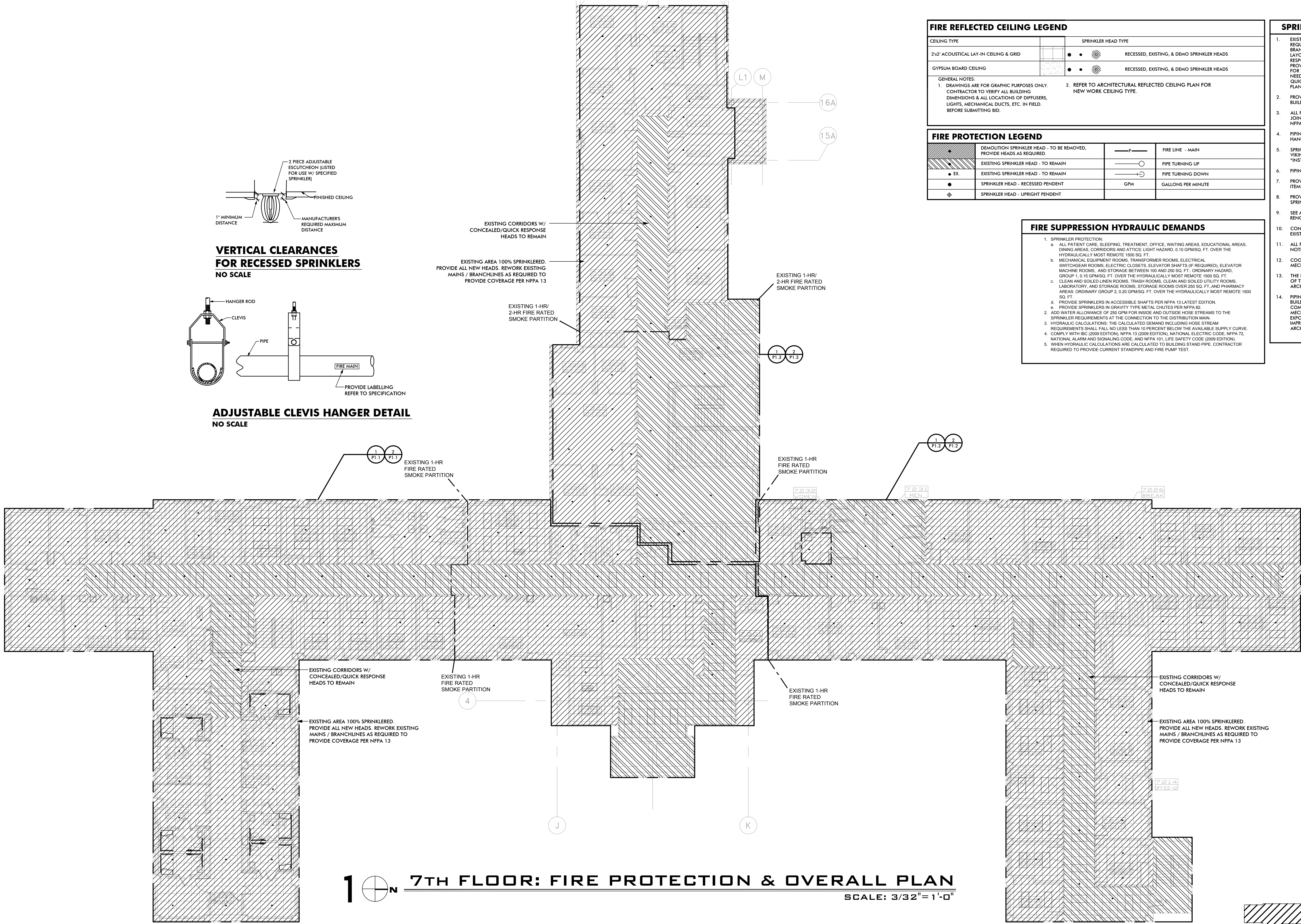
SPRINKLER NOTES	
1. EXISTING BUILDING IS 100% SPRINKLERED. MODIFY EXISTING SYSTEMS AS REQUIRED FOR NEW RENOVATIONS BY REMOVING EXISTING MAINS AND BRANCHES AND INSTALLING NEW MAINS AND BRANCHES FOR NEW WALL LAYOUT. REPLACE STANDARD RESPONSE SPRINKLER HEADS WITH QUICK RESPONSE. AND ADJUST THE EXISTING SPRINKLER HEAD LOCATIONS AND PIPING TO PROVIDE NFPA 13 COVERAGE FOR NEW WORK AREA. SEE ARCHITECTURAL PLANS FOR THE EXACT ROOM AND CEILING LAYOUT. PROVIDE SPRINKLER HEADS AS NEEDED FOR NEW WORK. ALL SPRINKLER HEADS TO MATCH EXISTING HEADS WHERE QUICK RESPONSE HEADS ARE EXISTING IN RENOVATED AREAS. SEE ARCHITECTURAL PLANS FOR LIMITS OF CONSTRUCTION FOR PROJECT. 2. PROVIDE A NFPA 13 COMPLIANT SYSTEM TO PROVIDE TOTAL COVERAGE FOR THE BUILDING. 3. ALL PIPING 1 1/2" AND SMALLER SHALL BE SCHEDULE 40 STEEL WITH THREADED JOINTS AND CAST IRON OR MALLEABLE IRON FITTINGS. PROVIDE HANGERS PER NFPA 13 SPACING. 4. PIPING LARGER 1 1/2" MAY BE SCHEDULE 10 PIPE WITH ROLL GROOVED JOINTS. HANGER SPACING TO BE PER NFPA 13 REQUIREMENTS. 5. SPRINKLER HEADS SHALL BE QUICK RESPONSE. GLASS BULB EQUAL TO WIRING MODEL. INSTALL SPRINKLER HEADS IN CENTER OF CEILING TILE. *INSTITUTIONAL HEADS IN PSYCHIATRIC AREAS. 6. PIPING IS TO BE INSTALLED IN A MANNER AS TO HIDE PIPING AS MUCH AS POSSIBLE. 7. PROVIDE A PIPING PLAN SHOWING COORDINATION OF SPRINKLER PIPING WITH ALL ITEMS ABOVE CEILING. 8. PROVIDE SHOP DRAWINGS INCLUDING A REFLECTED CEILING PLAN INDICATING SPRINKLER HEADS, LIGHTS AND HVAC CEILING DEVICES. 9. SEE ARCHITECT DRAWINGS FOR NEW CEILING PLAN, HEIGHTS AND AREAS BEING RENOVATED. 10. CONTRACTOR SHALL VERIFY LOCATION, SIZE AND ELEVATION OF ALL EXISTING PIPING PRIOR TO INSTALLING ANY NEW PIPE. 11. ALL FIRE PIPING IS RUN ABOVE CEILING ON PLAN WHICH SHOWN UNLESS OTHERWISE NOTED. 12. COORDINATE ALL PIPE ROUTING TO AVOID CONFLICTS WITH, STRUCTURAL, MECHANICAL, AND ELECTRICAL FEATURES OF BUILDING. 13. THE FIRE PROTECTION DRAWING IS DIAGNOSTIC AND DOES NOT SHOW ALL DETAILS OF THE WORK. OBTAIN DIMENSIONS AND PERTINENT INFORMATION FROM ARCHITECTURAL DRAWINGS. 14. PIPING SHALL BE INSTALLED PARALLEL AND PERPENDICULAR TO BUILDING LINES UNLESS SHOWN OTHERWISE. COORDINATE LOCATION OF COMPONENTS AND MATERIALS WITH ALL TRADES INCLUDING HVAC DUCT WORK, MECHANICAL, ELECTRICAL, AND STRUCTURAL. FINISH AND PRIME EQUIPMENT IN EXPOSED AREAS FOR PAINTING. COLOR TO BE SELECTED BY ARCHITECT. POOR OR IMPROPER WORKMANSHIP SHALL BE REMOVED AND REPLACED AS DIRECTED BY THE ARCHITECT.	



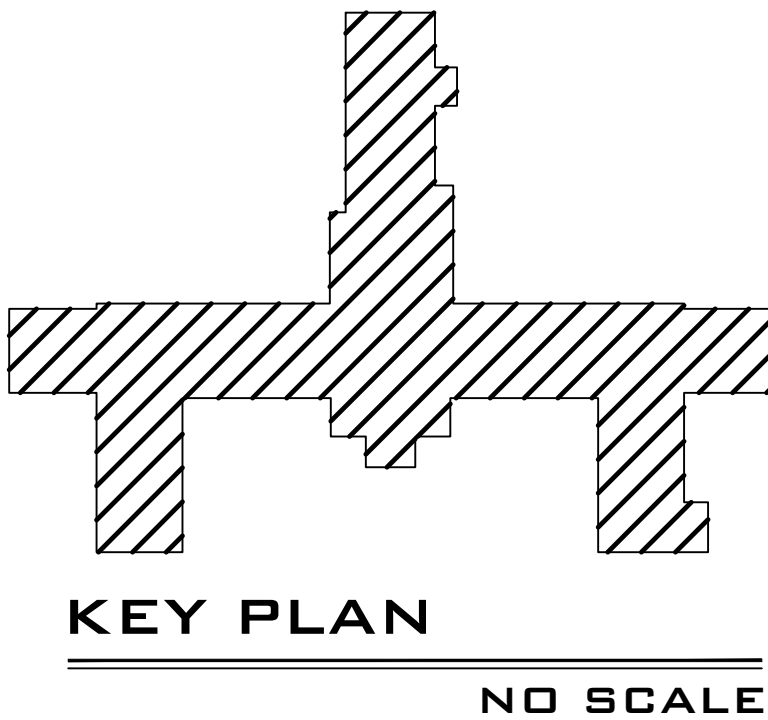
VERTICAL CLEARANCES FOR RECESSED SPRINKLERS
NO SCALE



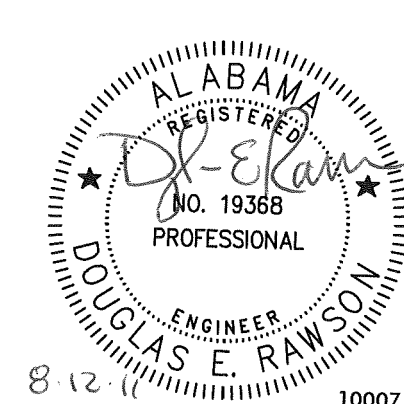
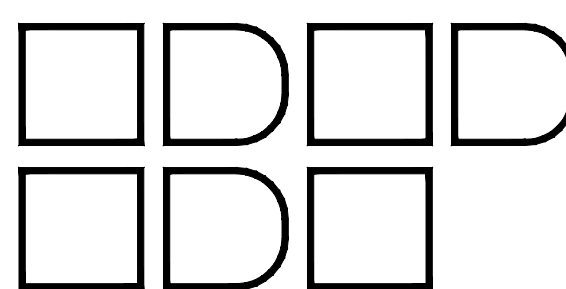
ADJUSTABLE CLEVIS HANGER DETAIL
NO SCALE



1 7TH FLOOR: FIRE PROTECTION & OVERALL PLAN
SCALE: 3/32"=1'-0"



Whitaker & Rawson, Inc.
3332 Old Montgomery Hwy
Suite 103 Mark Harris Bldg
Birmingham, AL 35209
Phone: 205-879-0801
Fax: 205-780-9891
www.whitakerandrawson.com
Mechanical Doug Rawson
Direct Line - (205) 879-0801
Planning: Carol Johnson
Direct Line - (205) 949-5123

Revisions	Date		 BIRCHFIELD PENUEL & ASSOCIATES, ARCHITECTS 2805 CRESCENT AVENUE • SUITE 200 • BIRMINGHAM, ALABAMA 35209	Department of Veterans Affairs MEDICAL CENTER BIRMINGHAM, ALABAMA	Drawing Title 7th FLOOR OVERALL PLAN FIRE PROTECTION	Project Title RENOVATE SPACE FOR REHAB AND PHYSICAL MEDICINE	Date: 08-12-11 VA Project No. 521-10-101 CAD File No. 4608A01	Building Numbers Checked DER/CLJ Drawn RMB	Location VA MEDICAL CENTER BIRMINGHAM, ALABAMA	Drawing No. FP1.0 Dwg. Of	Veterans Administration
-----------	------	---	--	--	--	--	---	--	---	---------------------------------	-------------------------