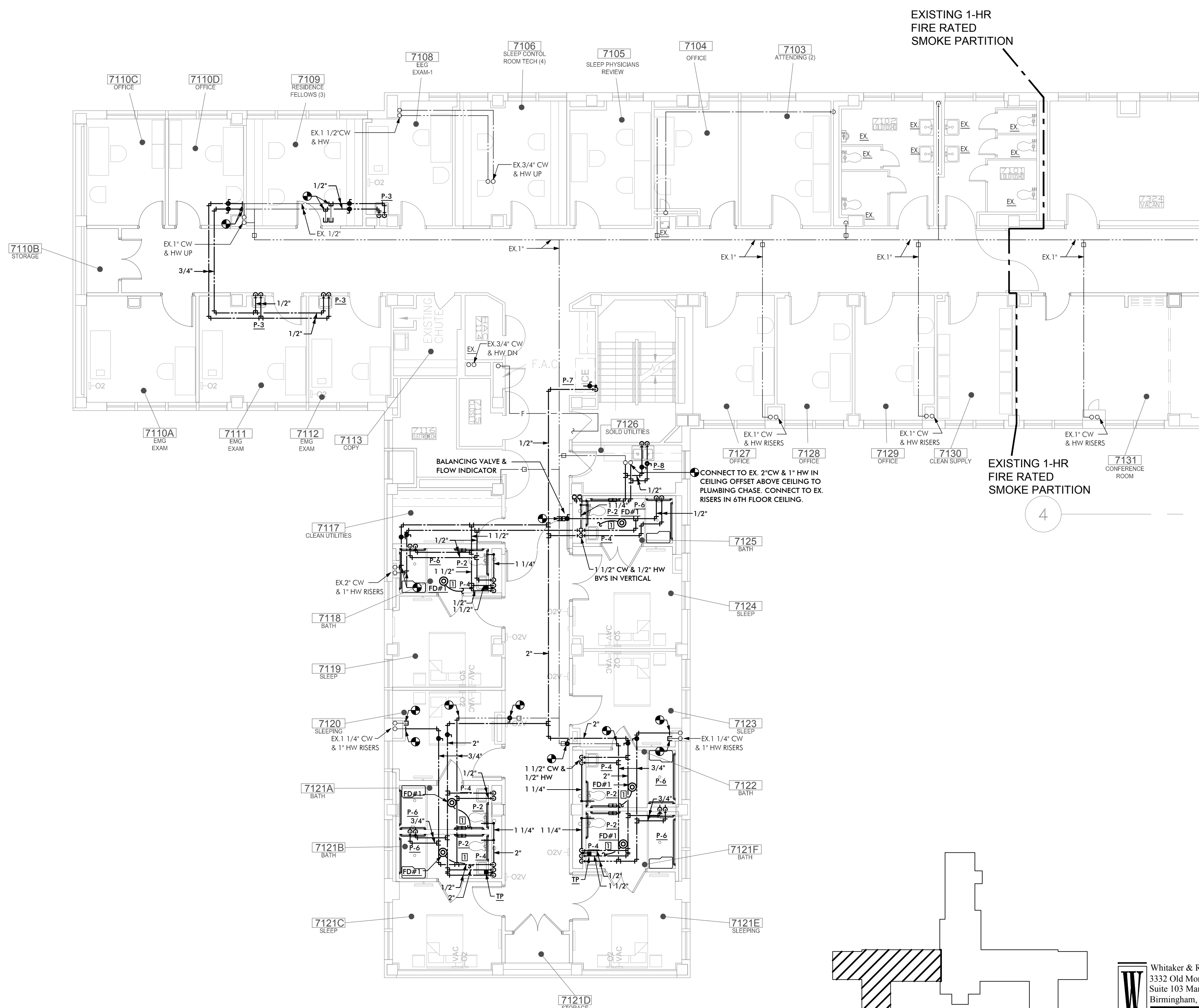
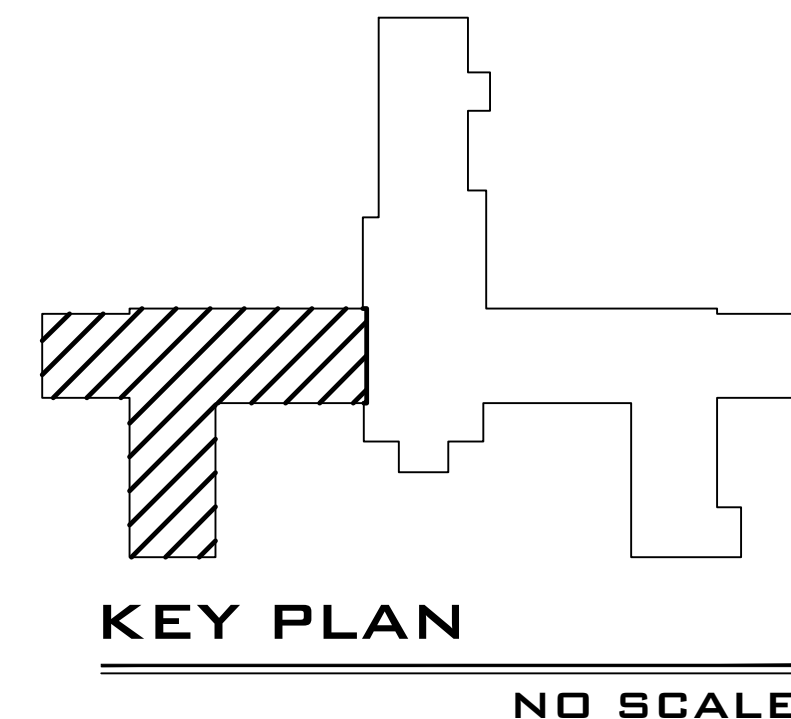


NOTE:  
STRUCTURE SHOWN ON PLANS (DASHED LINES) ARE SHOWN FOR GENERAL REFERENCE ONLY. CONTRACTOR IS TO FIELD VERIFY EXISTING CONDITIONS. SHIFT SLAB PENETRATIONS AS REQUIRED. DO NOT CUT OR DRILL THROUGH BEAMS OR JOISTS. NOTIFY ARCHITECT AND VA PROJECT MANAGER OF ANY CONFLICTS.

**1 7TH FLOOR PART "A" NON-PRESSURE PIPING PLAN**  
1/8" = 1'-0"



**2 7TH FLOOR PART "A" PRESSURE PIPING PLAN**  
1/8" = 1'-0"



**Whitaker & Rawson, Inc.**  
3332 Old Montgomery Hwy  
Suite 103 Mark Harris Bldg  
Birmingham, AL 35209  
Phone: 205-879-4801  
Fax: 205-776-9891  
www.whitakerandrawson.com  
Mechanical Doug Rawson  
Direct Line - (205) 879-4801  
Planning: Carol Johnson  
Direct Line - (205) 949-5123

**BIRCHFIELD  
PENUEL &  
ASSOCIATES,  
ARCHITECTS**  
2805 CRESCENT AVENUE • SUITE 200 • BIRMINGHAM, ALABAMA 35209

**Department of Veterans Affairs  
MEDICAL CENTER  
BIRMINGHAM, ALABAMA**

Drawing Title  
**7TH FLOOR PART "A" ENLARGED  
NON-PRESSURE & PRESSURE PIPING**

Project Title  
**RENOVATE SPACE FOR REHAB  
AND PHYSICAL MEDICINE**

Date: **08-12-11**  
VA Project No. 521-10-101  
CAD File No. 4608A01

Building Numbers  
Checked: **DER/CLJ**  
Drawn: **RMB**  
Location  
**VA MEDICAL CENTER BIRMINGHAM, ALABAMA**

Drawing NO.  
**P1.3**  
Dwg. Of

**Veterans  
Administration**