

A

B

C

D

E

F

A

B

C

D

E

F

three inches = one foot

one and one half inches = one foot

one inch = one foot

three quarters inch = one foot

one half inch = one foot

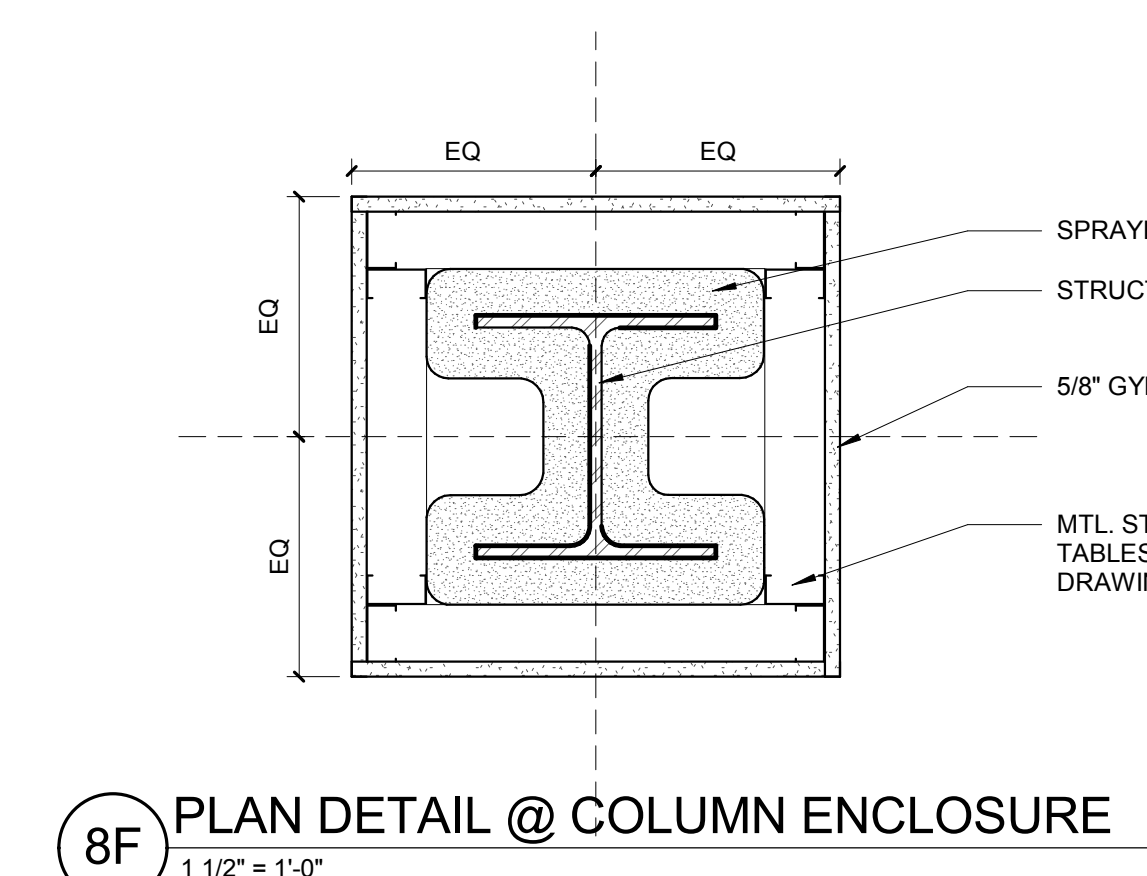
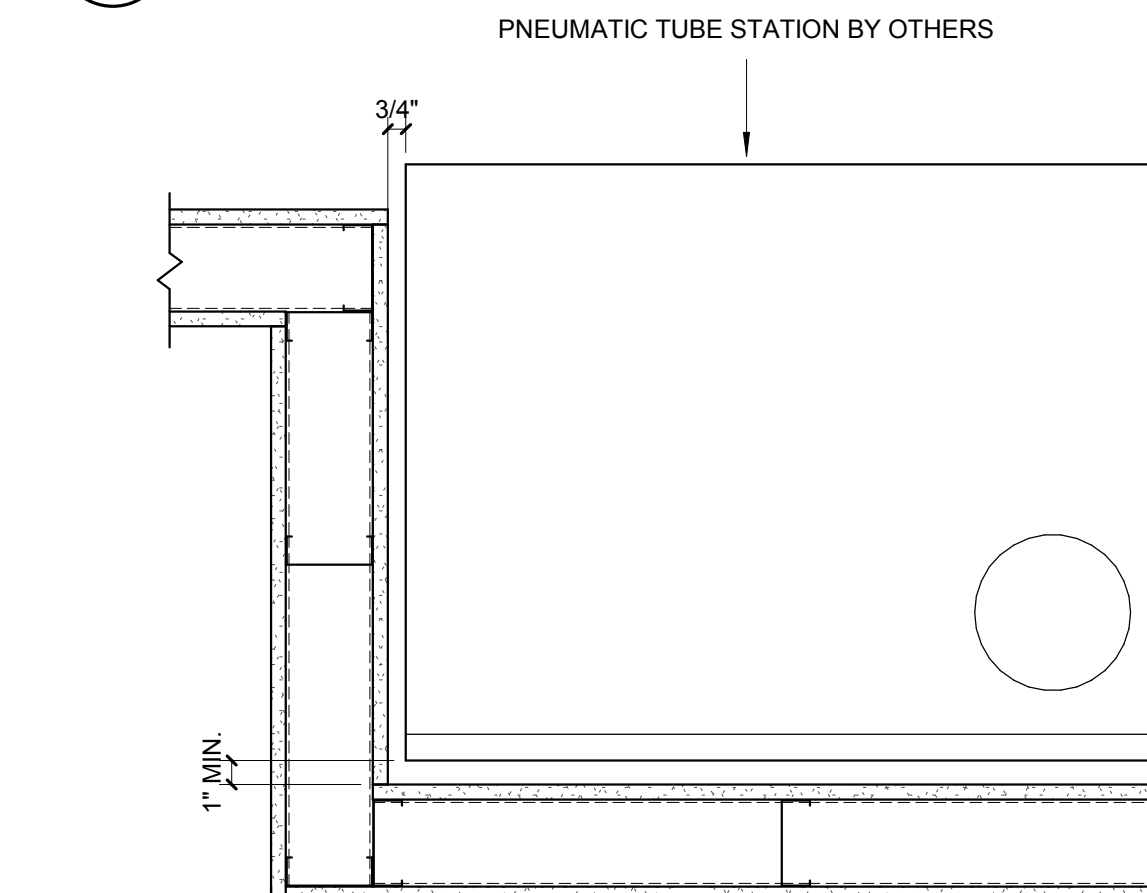
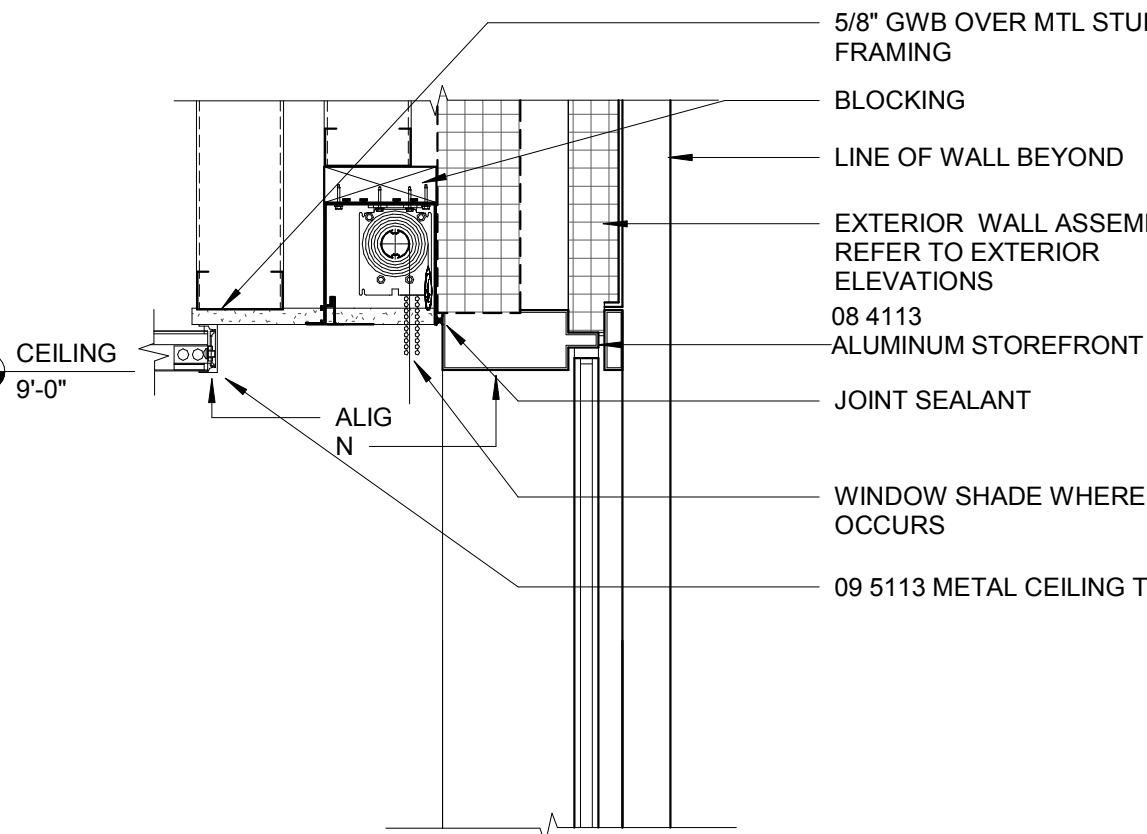
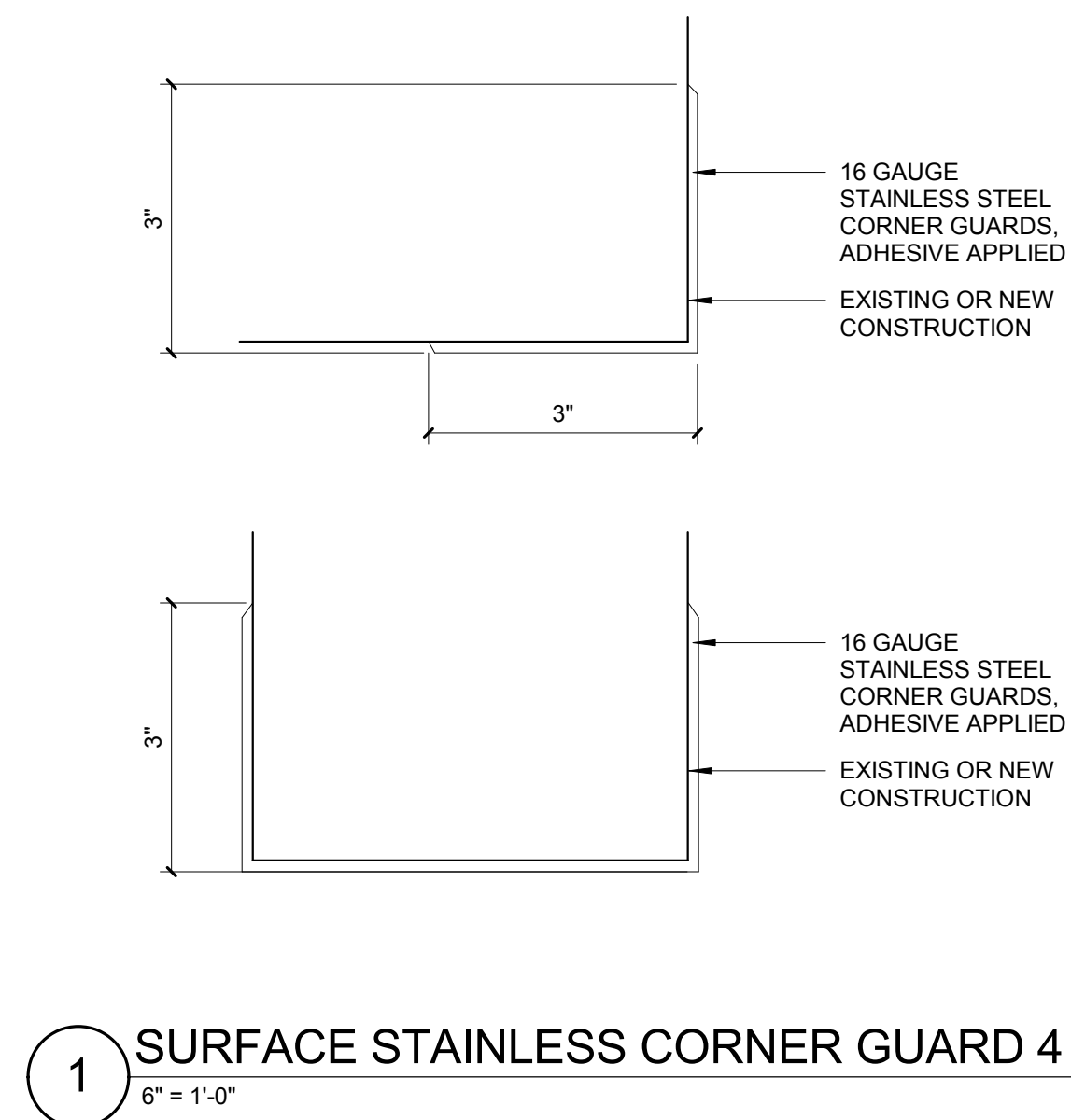
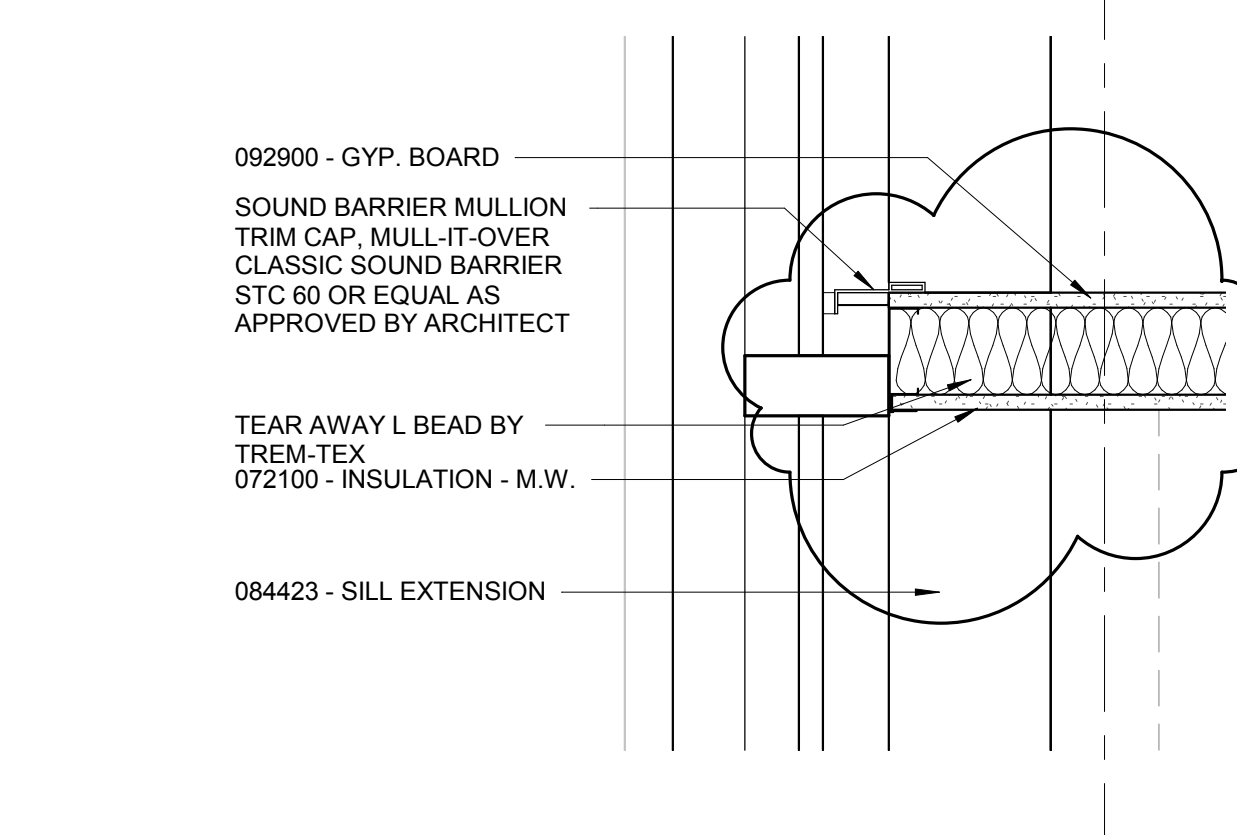
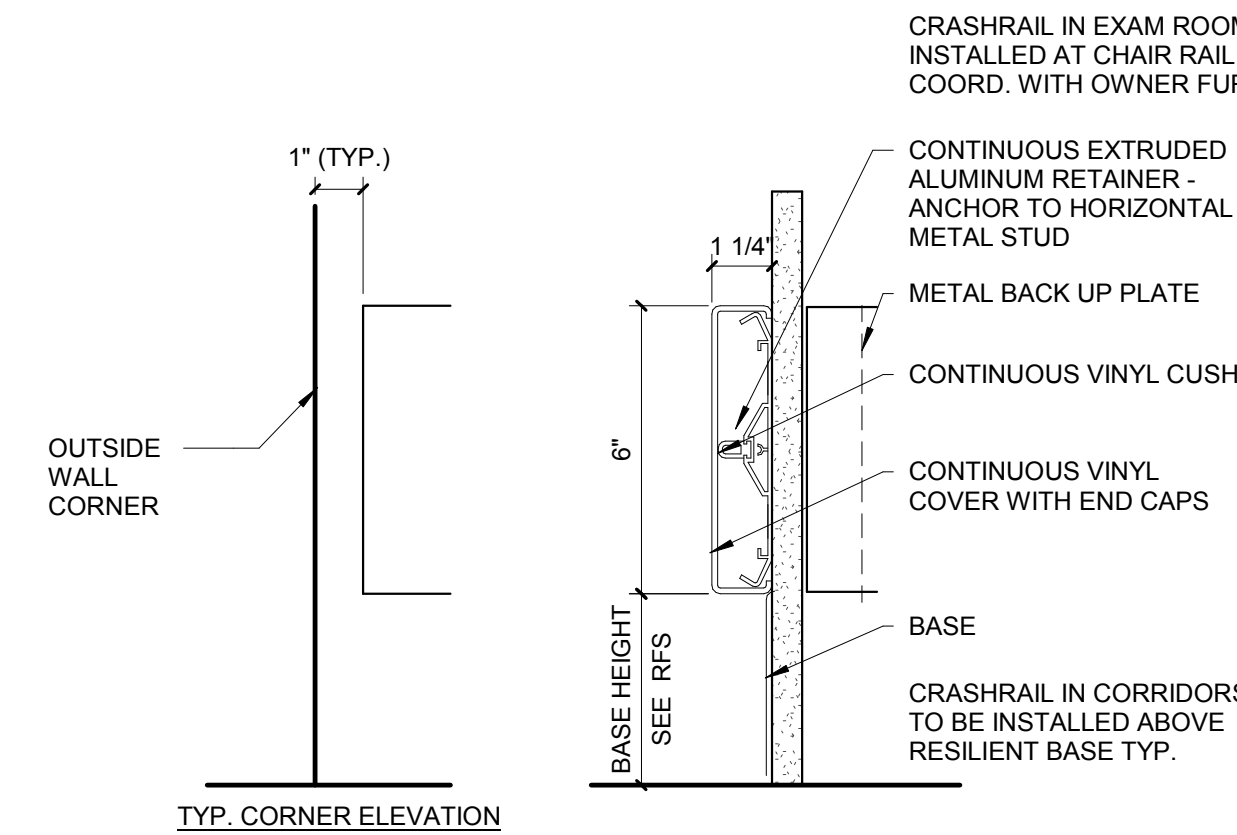
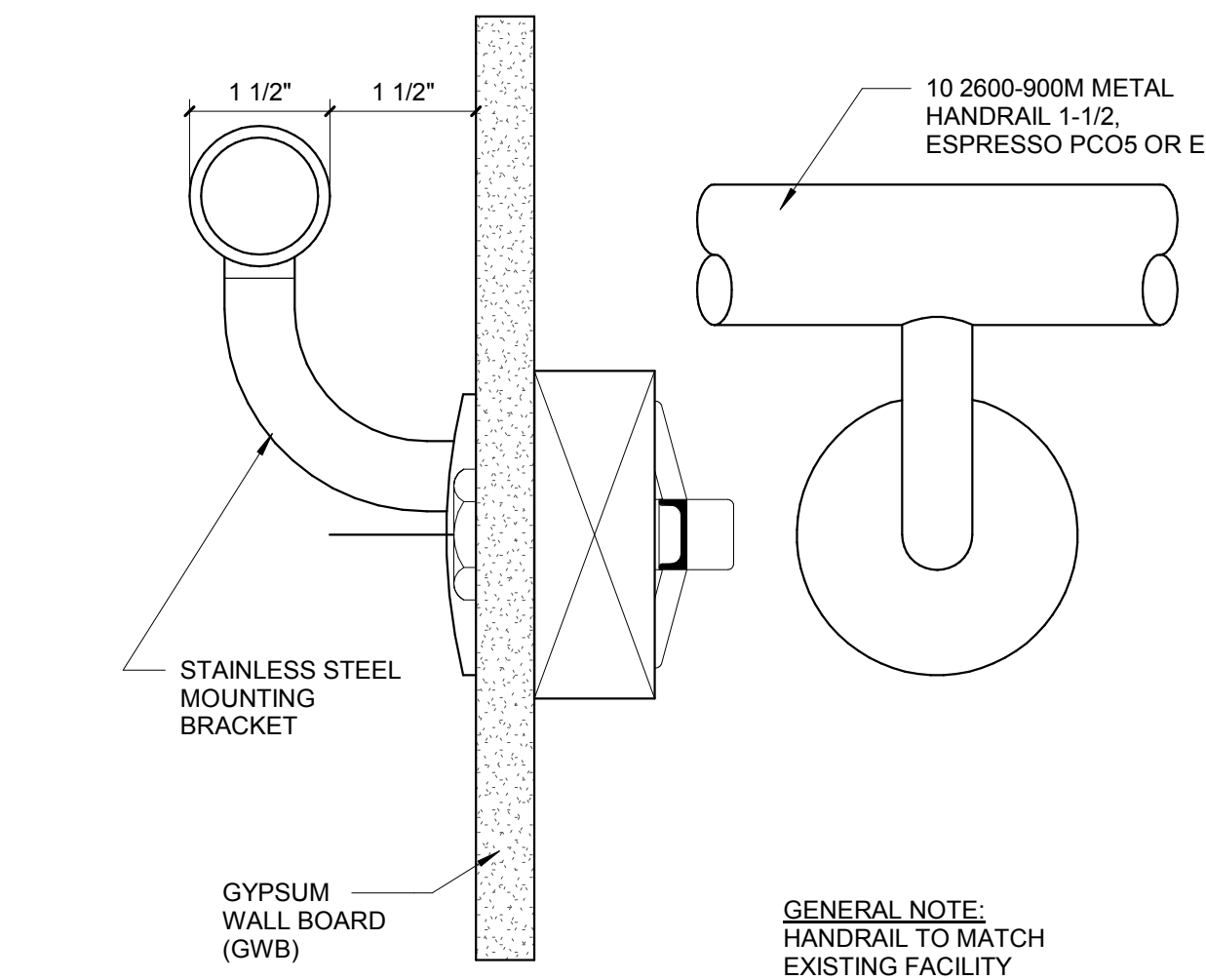
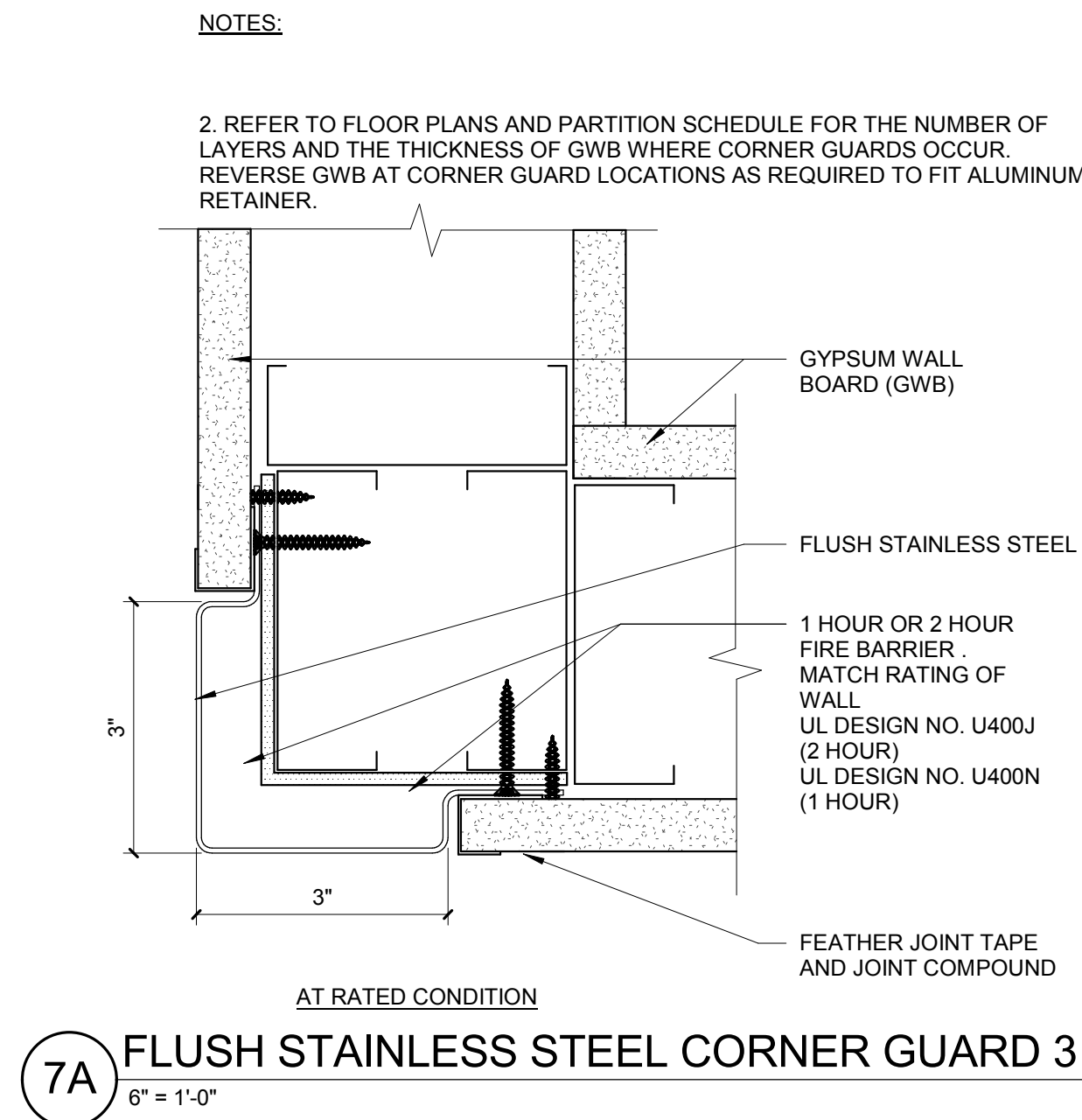
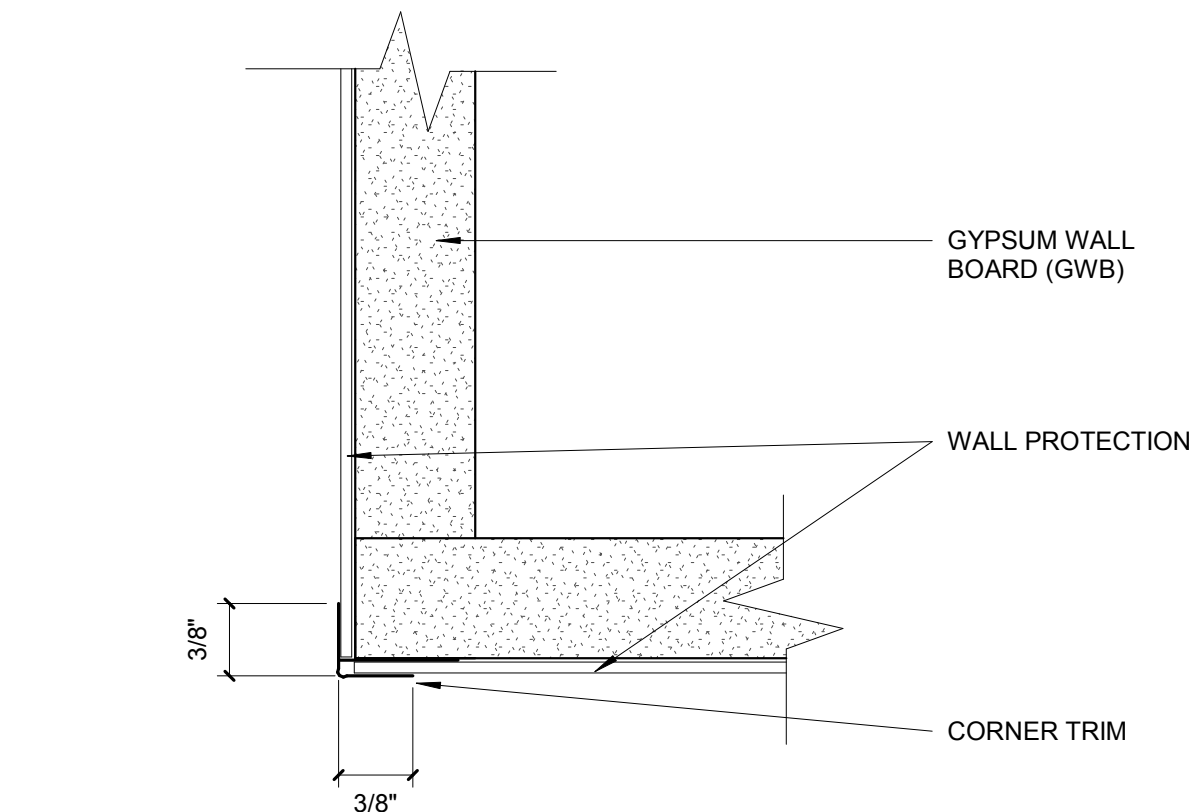
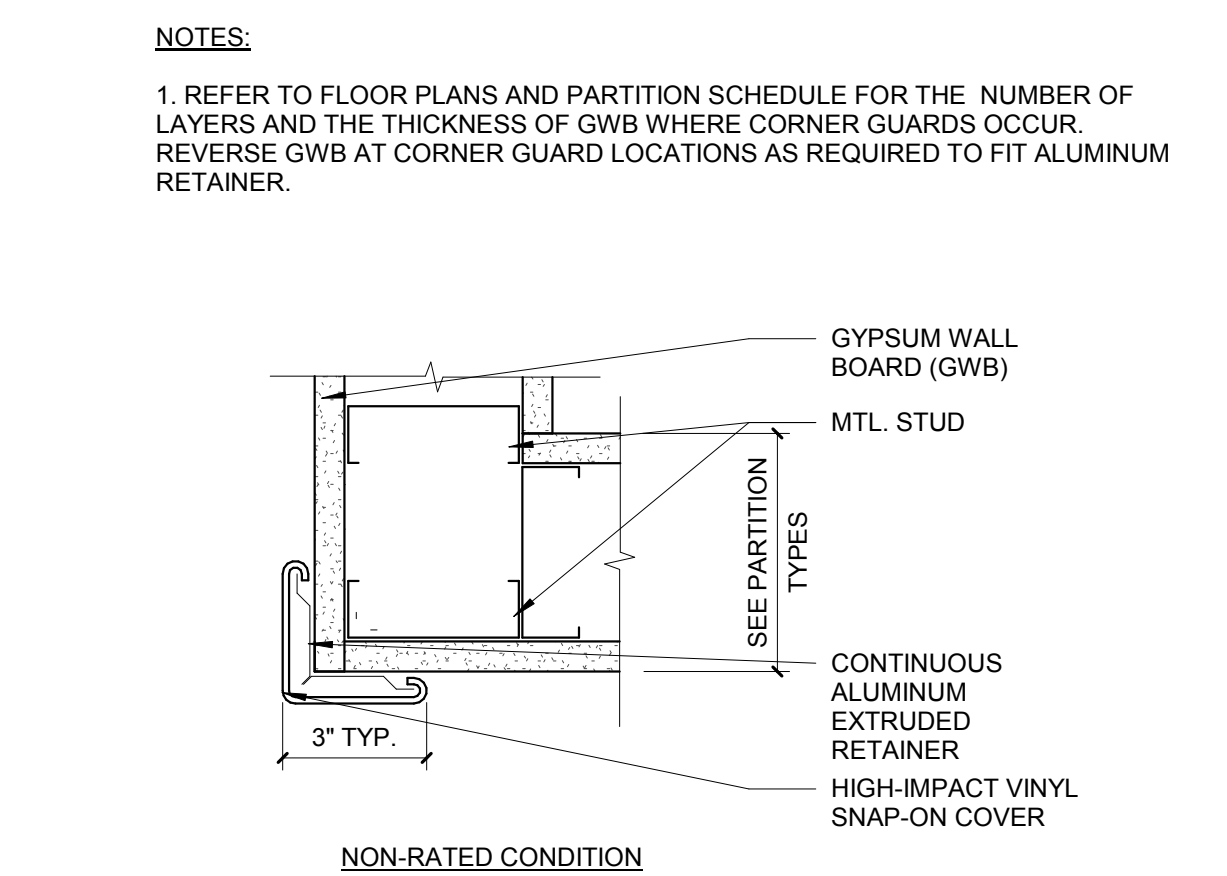
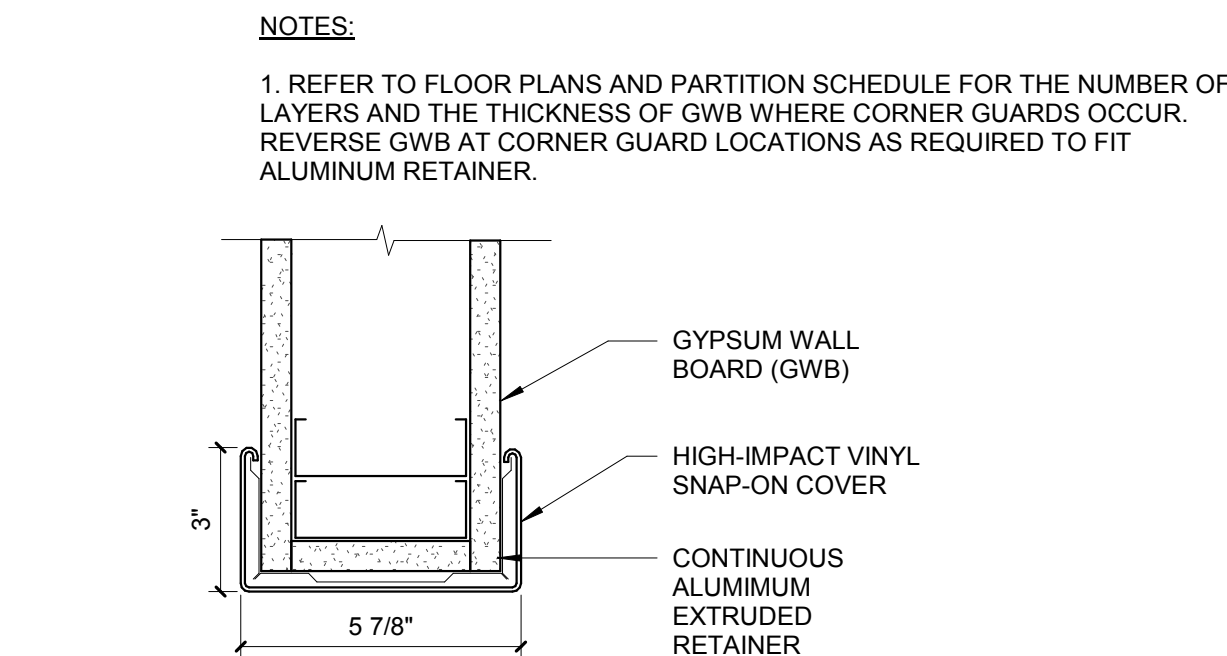
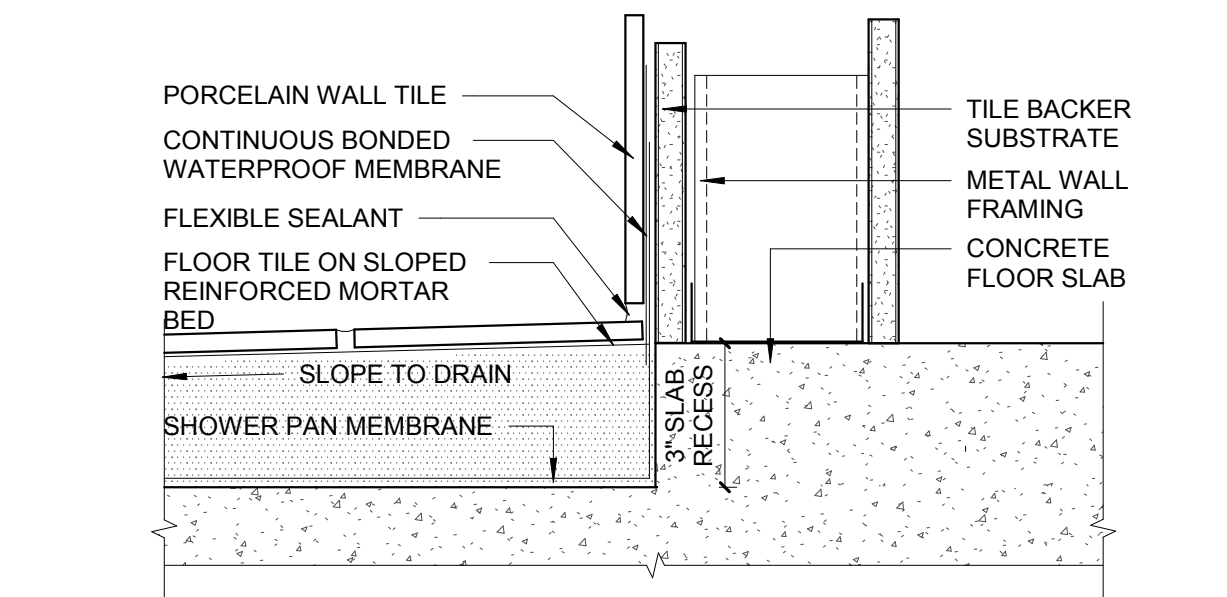
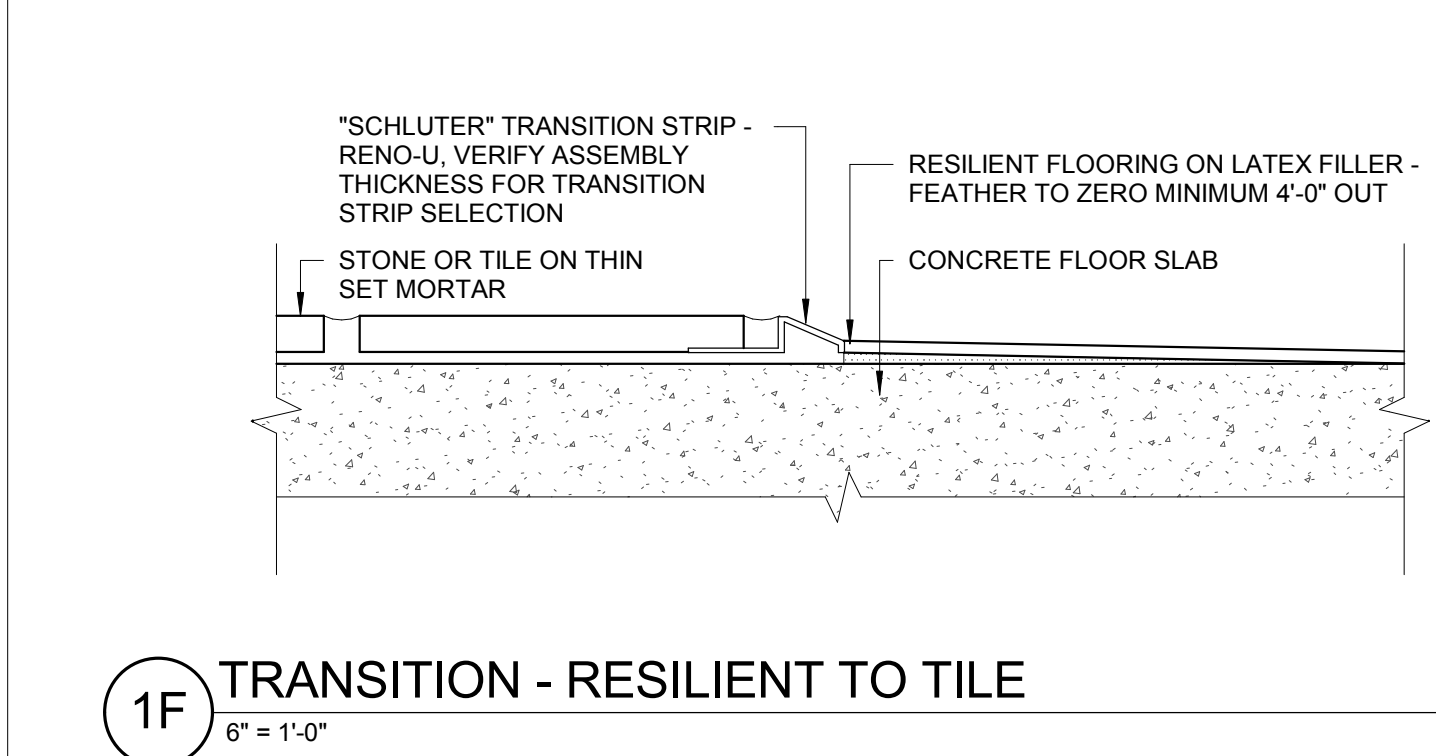
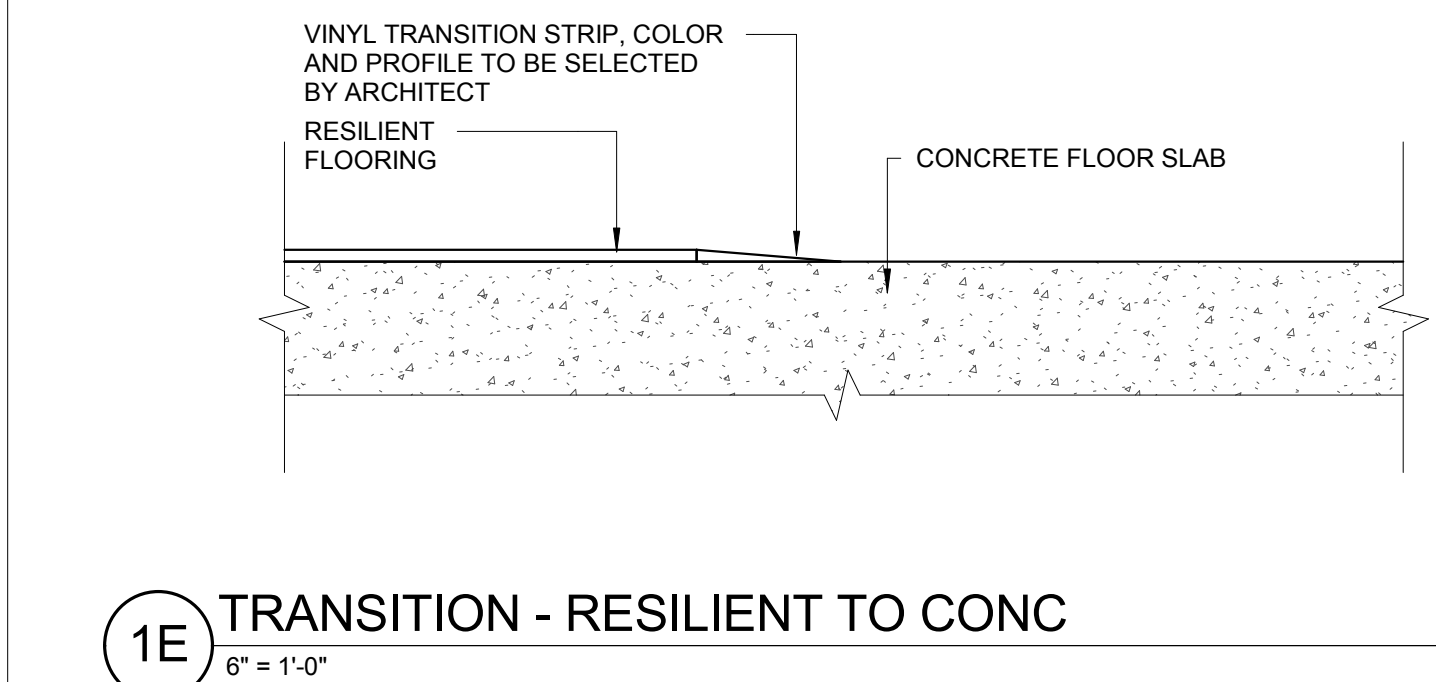
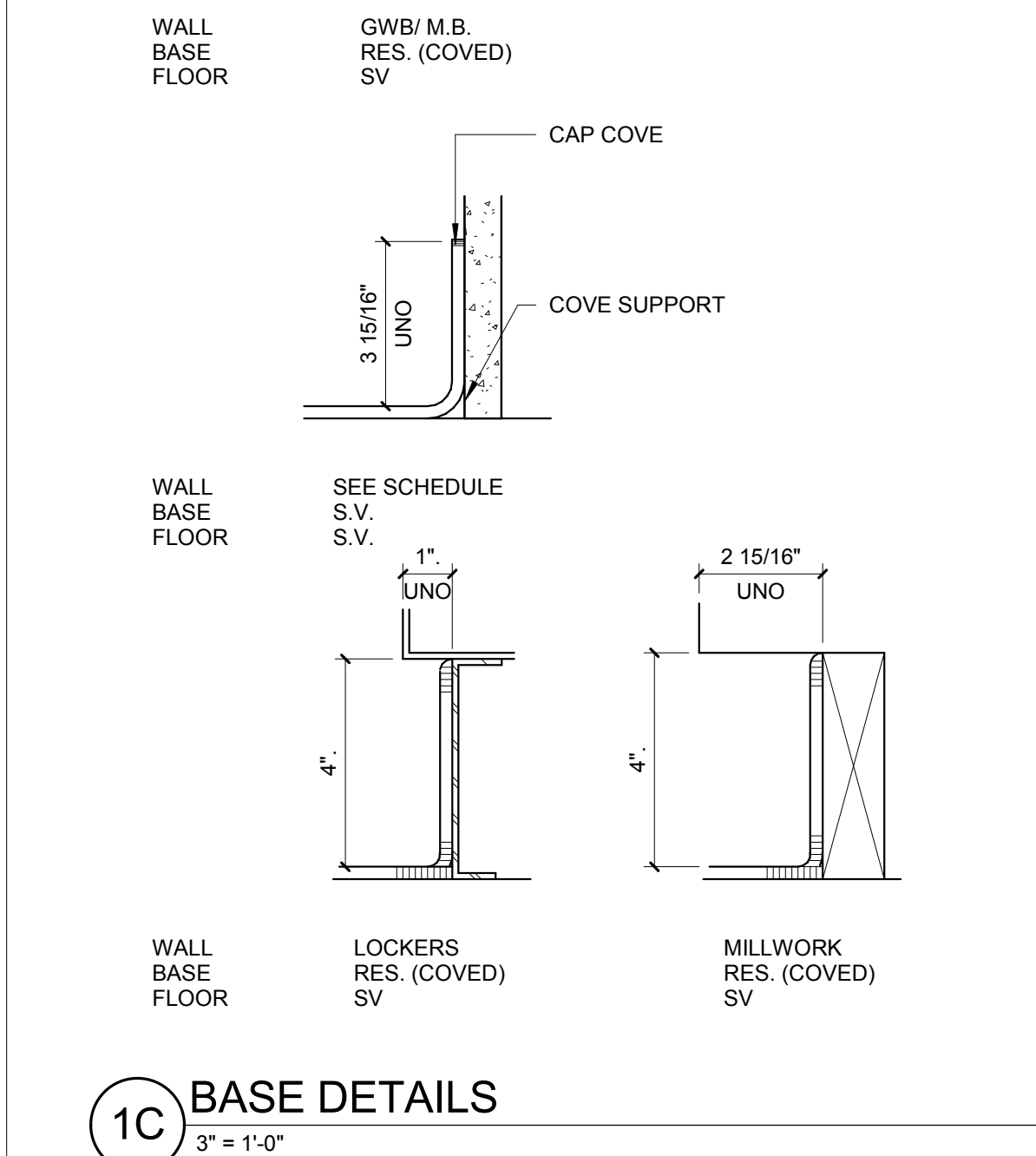
one quarter inch = one foot

three eighths inch = one foot

one eighth inch = one foot

one quarter inch = one foot

one eighth inch = one foot

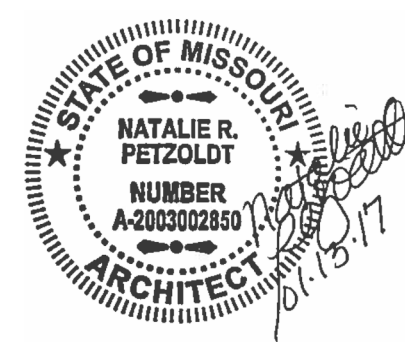


1	Addendum 01	06/01/17
Revisions:	Date	

CONSULTANTS:

AcoustiControl
Acoustical Engineer
2464 Taylor Road
Suite 214
Wildwood, MO 63040
314.436.9770

The Schachinger Group
Elevator
4255 Stoney Creek Drive
Fort Collins, CO 80525
973.698.2263



ARCHITECT/ENGINEERS:

CANNONDESIGN

1100 Clark Avenue
St. Louis, Missouri 63102
T: 314.241.6250
F: 314.241.2570

© CannonDesign 2017
All rights reserved. No part of this document may be reproduced or utilized in any form, without prior written authorization by the Cannon Corporation

Drawing Title

INTERIOR DETAILS

Approved: Project Director

100% CONSTRUCTION DOCUMENTS - ISSUE FOR BID

Project Title
Harry S. Truman Memorial Veterans' Hospital
Expand Ambulatory Care Addition

Location
Columbia, Missouri

Date
JANUARY 13, 2017

Project Number
589-333
CANNON DESIGN PROJECT NO. 3850.06
Building Number

Location
Columbia, Missouri

Date
JANUARY 13, 2017

Checked
Author

Drawing Number
AI-801.2

Dwg. of

Office of
Construction
and Facilities
Management

Department of
Veterans Affairs