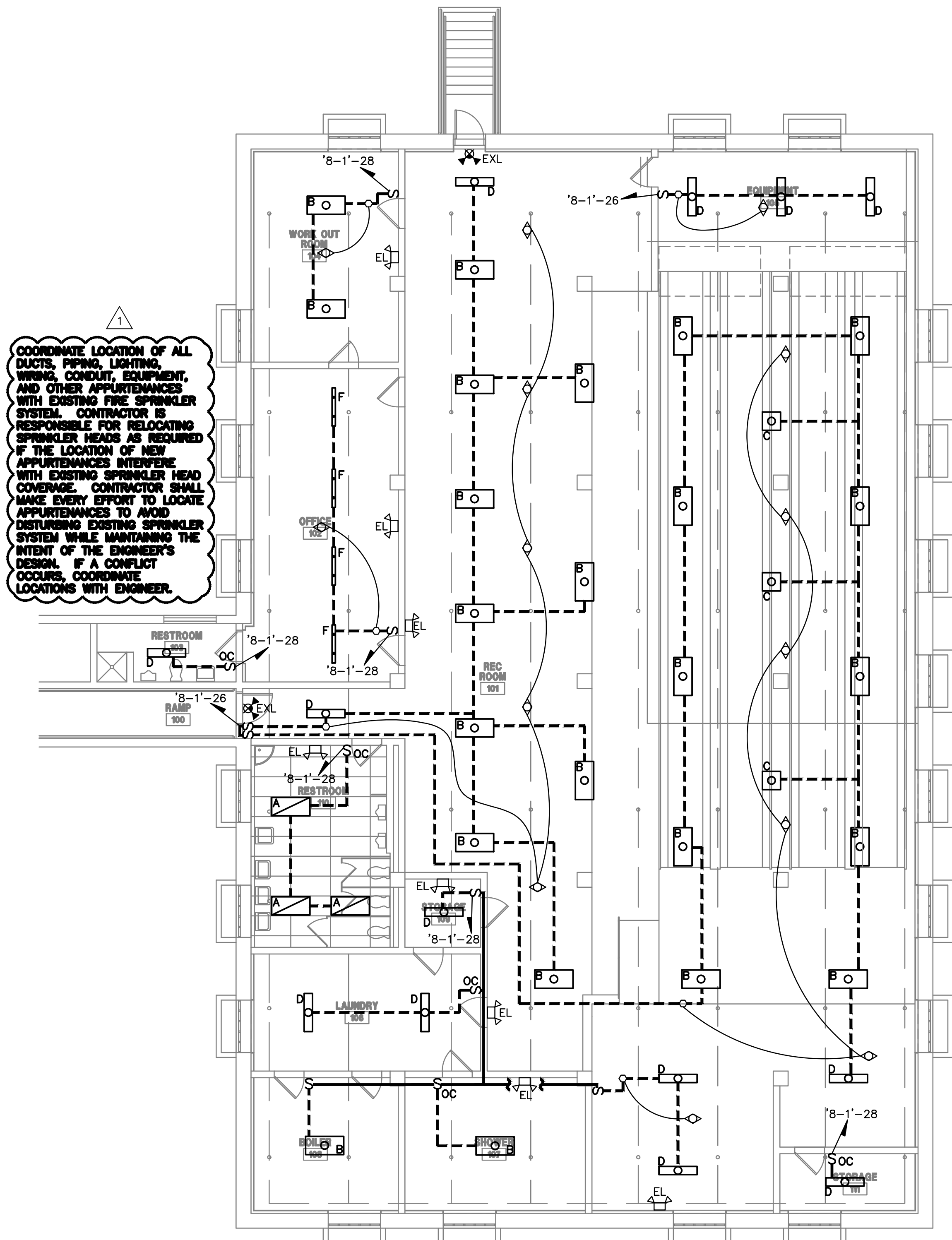
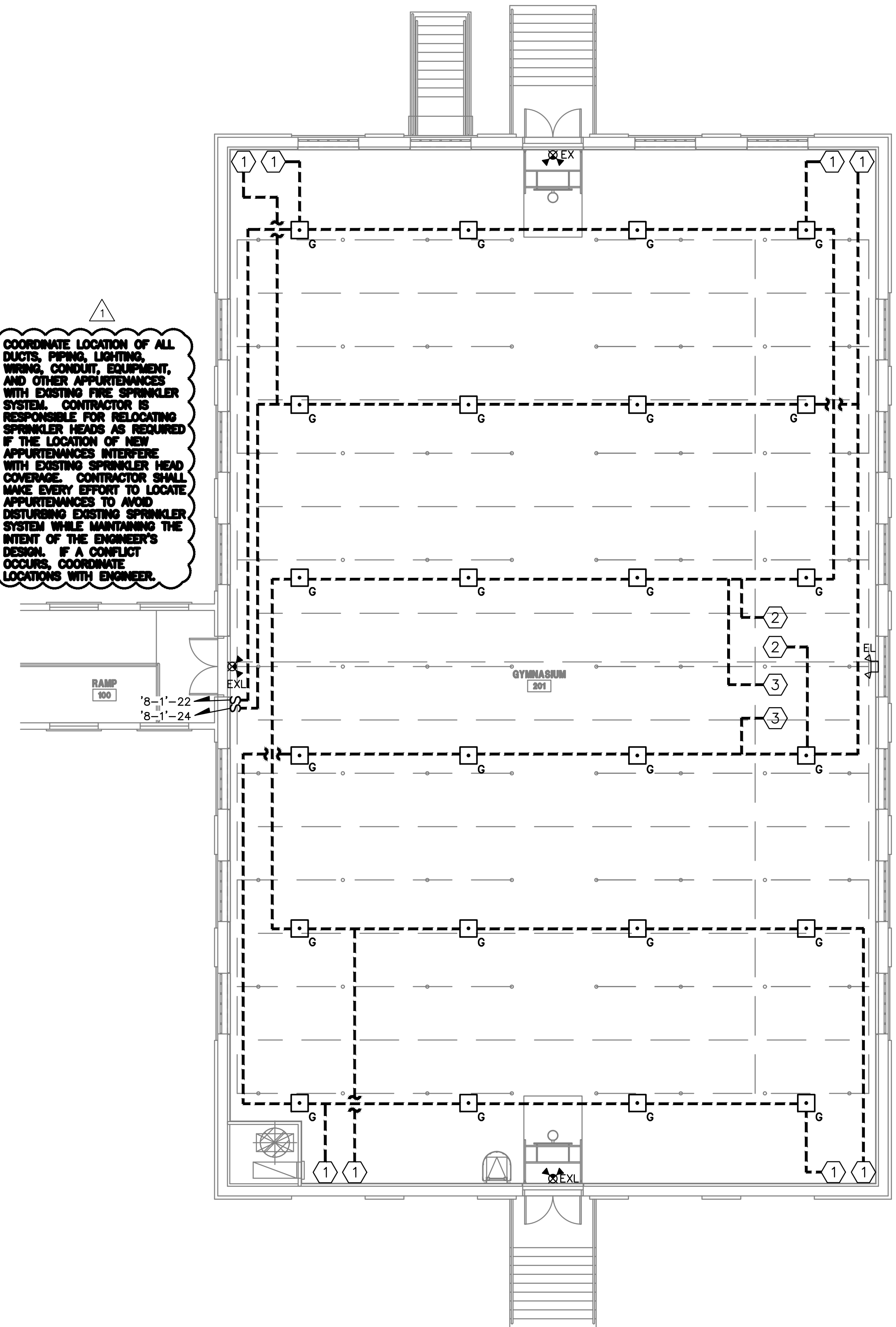


three inches = one foot  
one and one-half inches = one foot  
one inch = one foot  
three-quarters inch = one foot  
one-half inch = one foot  
three-eighths inch = one foot  
one-quarter inch = one foot  
one-eighth inch = one foot



1 LOWER LEVEL LIGHTING PLAN  
E-102 SCALE: 1/8" = 1'-0"

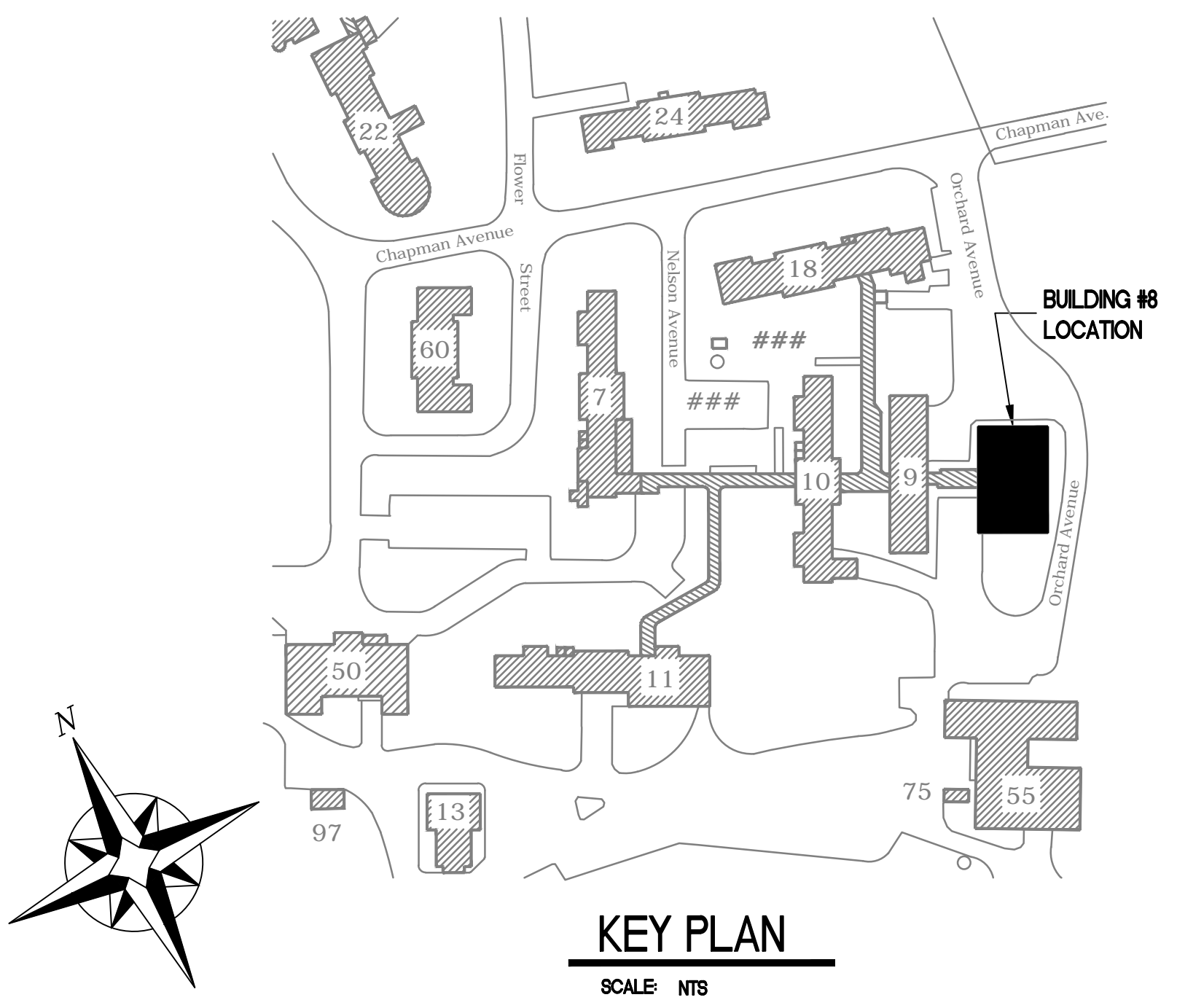
- LOWER LEVEL LIGHTING PLAN NOTES:
1. ALL LIGHTING CONDUCTORS SHALL BE 2-12 AWG, 1-12 AWG EG IN 3/4" EMT OR MC CABLE UNLESS NOTED OTHERWISE.
  2. CIRCUIT ALL EMERGENCY/EXIT LIGHTS ON LIGHTING CIRCUIT SERVING THE SAME AREA BUT AHEAD OF ANY SWITCHING.
  3. LOCATION OF OCCUPANCY SENSORS IS APPROXIMATE. CONTRACTOR SHALL FOLLOW MANUFACTURER'S RECOMMENDED PLACEMENT AND INSTALLATION PER MANUFACTURER'S INSTRUCTIONS.





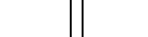

2 GYMNASIUM LIGHTING PLAN  
E-102 SCALE: 1/8" = 1'-0"


- GYMNASIUM LIGHTING PLAN NOTES:
1. ALL LIGHTING CONDUCTORS SHALL BE 2-12 AWG, 1-12 AWG EG IN 3/4" EMT OR MC CABLE UNLESS NOTED OTHERWISE.
  2. CIRCUIT ALL EMERGENCY/EXIT LIGHTS ON LIGHTING CIRCUIT SERVING THE SAME AREA BUT AHEAD OF ANY SWITCHING.

- GYMNASIUM LIGHTING CONTROL TAG NOTES:
1. WATT STOPPER WALL MOUNTED CX-100 MOTION SENSOR. INSTALL PER MANUFACTURER'S INSTRUCTIONS. INSTALL WIRE CAGE WC-2.
  2. CEILING MOUNTED WATT STOPPER LS-102 SWITCHING PHOTOSENSOR. INSTALL PER MANUFACTURER'S INSTRUCTIONS.
  3. CEILING MOUNTED WATT STOPPER LS-301 DIMMING PHOTOSENSOR. INSTALL PER MANUFACTURER'S INSTRUCTIONS.



100% CONSTRUCTION DOCUMENTS

Revisions		Date	<b>ENGINEERS:</b>		Professional Stamp/Seal	<b>ARCHITECT:</b>			Drawing Title		Project Title		Date	<b>VA NIHCS Engineering</b>		
	ADDENDUM 1	06/01/12	 <b>APOGEE</b> Consulting Group, PA 8831 Keystone Crossing Indianapolis, IN 46240 (317) 819-0200 Fax (319) 858-7423 Apogee Project # 2011 135 Apogee COA# PC80800089			 <b>CSO Architects</b> ARCHITECTURE • INTERIOR DESIGN 8831 Keystone Crossing • Indianapolis, IN 46240 Main 317.848.7800 • Fax 317.574.0957 • csoinc.net			LOWER LEVEL + GYMNASIUM LIGHTING PLANS		ENERGY IMPROVEMENTS & AIR CONDITIONING BUILDING #8, GYM		09/19/11			
											Building No. 8		Scale AS SHOWN		Drawn/Checked SAE/PBT	Project No. 610-10-100
													Location		<b>DRAWING NO.</b> <b>E-102</b> Dwg. 3 of 6	
													VA MEDICAL CENTER ENGINEERING BLDG #52, RM 201 1700 E. 38TH ST MARIION, IN 46953			

 <b>Department of Veterans Affairs</b>
---