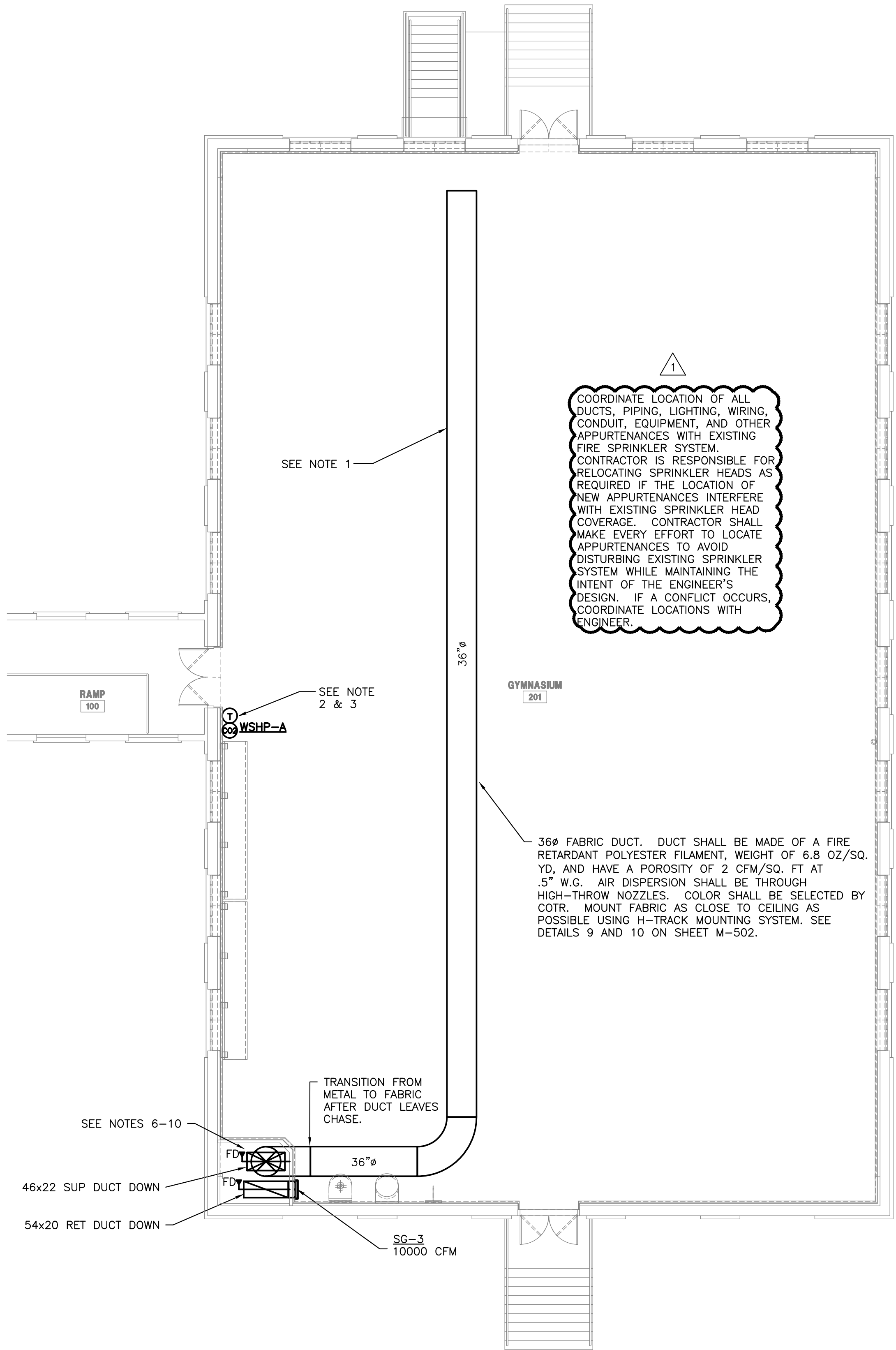
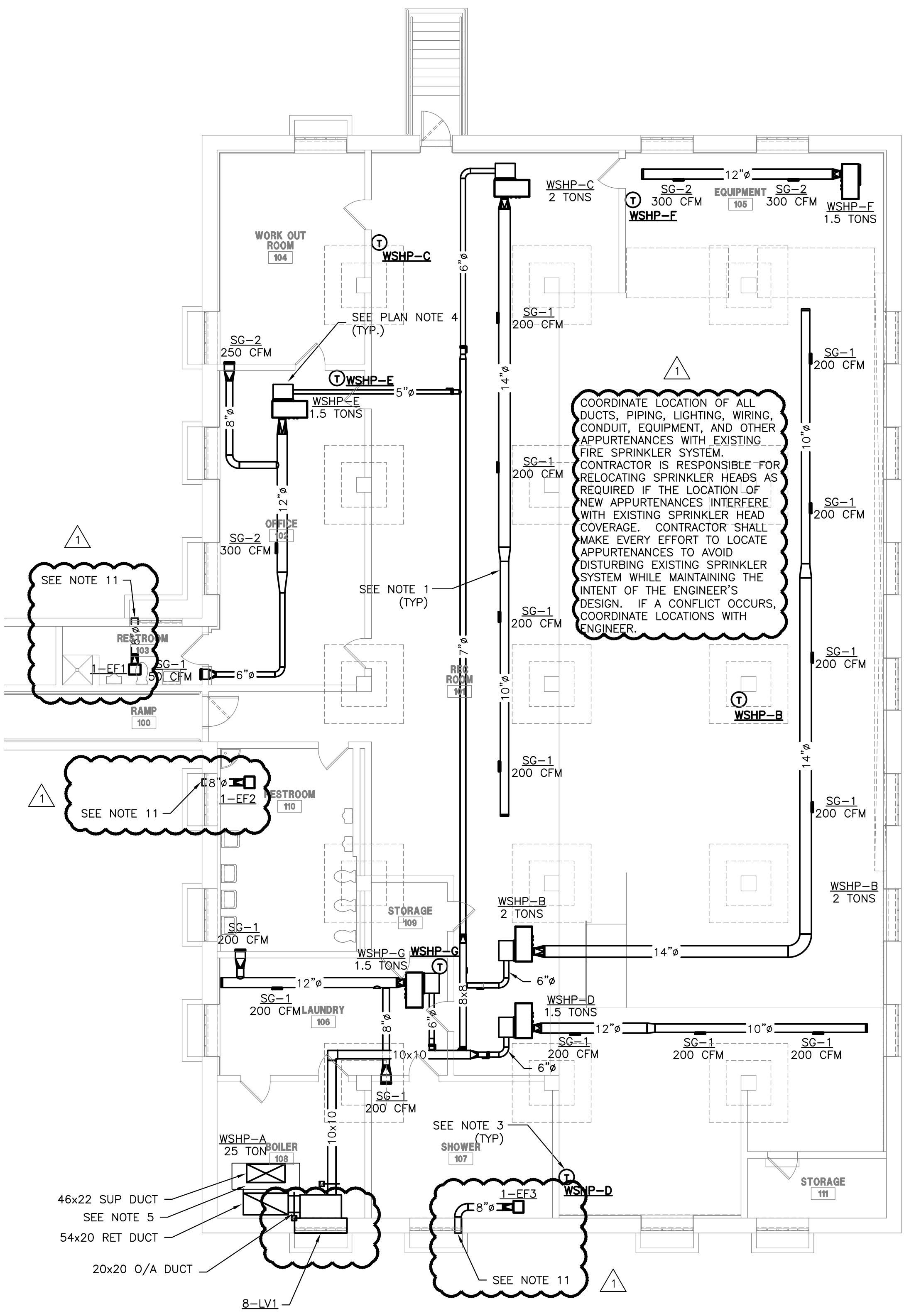


A three inches = one foot
B one and one-half inches = one foot
C one inch = one foot
D three-quarters inch = one foot
E one-half inch = one foot
F three-eighths inch = one foot
one-quarter inch = one foot
one-eighth inch = one foot

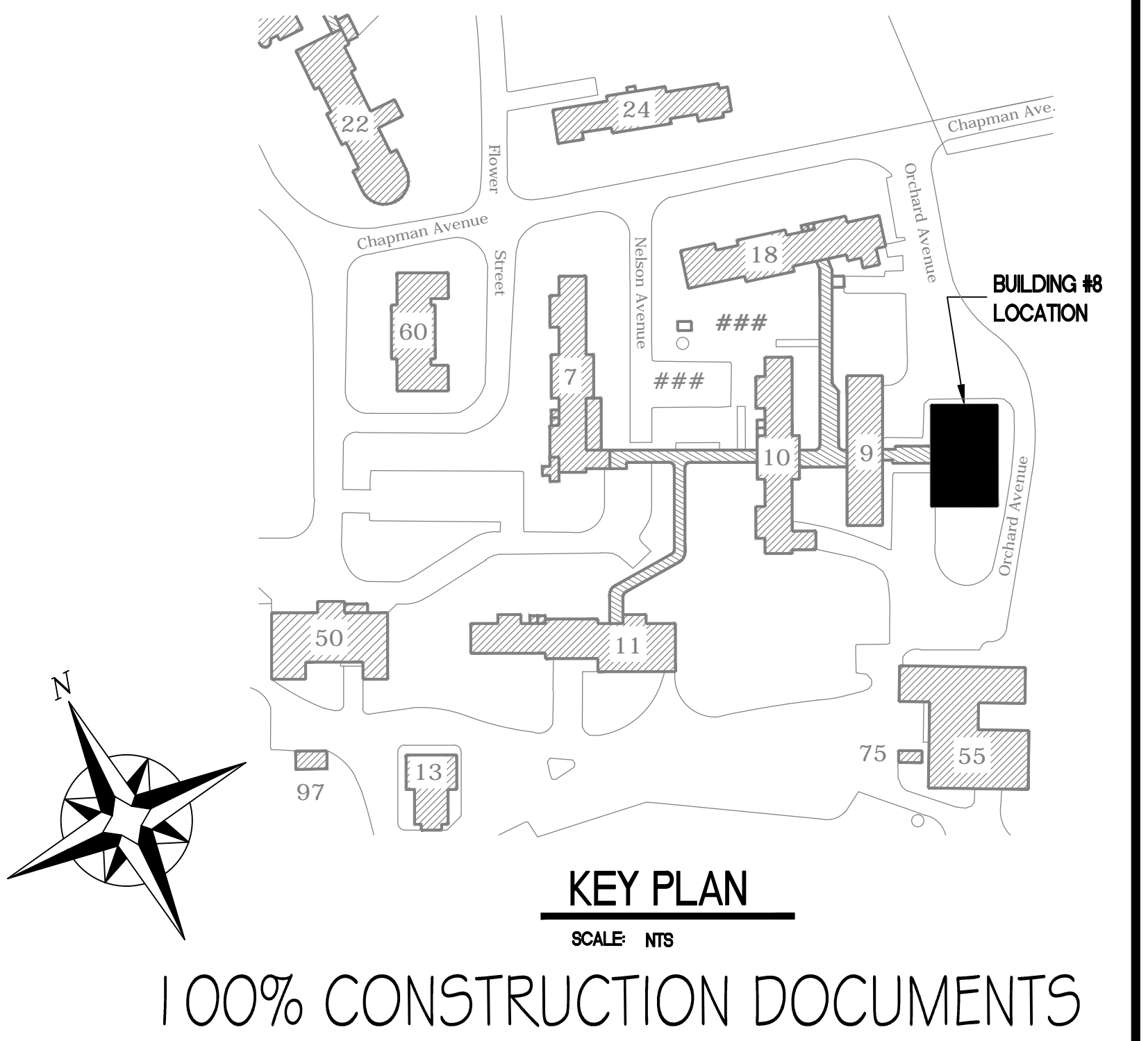


2
M-202
GYMNASIUM MECHANICAL FLOOR PLAN
SCALE: 1/8" = 1'-0"



1
M-202
LOWER LEVEL MECHANICAL FLOOR PLAN
SCALE: 1/8" = 1'-0"

- MECHANICAL PLAN NOTES:
1. HOLD ALL DUCTWORK TIGHT TO CEILING.
 2. PROVIDE GUARD FOR THERMOSTAT AND CO2 SENSOR.
 3. MOUNT THERMOSTAT AND CO2 SENSOR AT 48" AFF.
 4. 24" WIDE X 18" LONG X 8" DEEP RETURN AIR PLENUM. COVER WITH 1/2" HARDWARE CLOTH.
 5. PROVIDE DUCT ACCESS DOOR IN BOTH SUPPLY AND RETURN AIR DUCTS IN BOILER ROOM FOR ACCESS TO FIRE DAMPERS THAT PENETRATE GYM FLOOR.
 6. COORDINATE LOCATION OF DUCTS WITH ARCHITECTURAL AND MECHANICAL DRAWINGS. REPORT ANY DISCREPANCIES TO ARCHITECT AND ENGINEER.
 7. CORE CORNERS OF OPENING THEN SAW CUT BETWEEN CORES.
 8. DO NOT DAMAGE REMAINING SLAB OR REINFORCING STEEL.
 9. REMOVE ALL DUST AND DEBRIS, THE FIELD APPLY EPOXY PAINT ON ANY EXPOSED REINFORCING STEEL.
 10. LEAVE A MINIMUM OF 2'-0" BETWEEN DUCT AND WINDOW.
 11. UNDER WINDOW REPLACEMENT BASE BID AND ALTERNATE 1, THE WINDOW SHALL BE REDUCED IN SIZE AND THE SPACE ALONG THE TOP OF THE WINDOW SHALL BE REPLACED BY A LOUVER 12" HIGH X THE FULL WIDTH OF THE WINDOW. EXHAUST DUCT SHALL TERMINATE IN THE LOUVER AND ANY UNUSED PORTION OF THE LOUVER SHALL BE BLANKED OFF WITH AN INSULATED SHEET METAL PANEL PAINTED FLAT BLACK. UNDER WINDOW REPLACEMENT ALTERNATES 2 AND 3, A SINGLE PANE OF THE DIVIDED LIGHT WINDOWS SHALL BE REPLACED BY A WOOD PANEL. THE WOOD PANEL SHALL BE PAINTED TO MATCH EXTERIOR AND SHALL BE PENETRATED BY EXHAUST DUCT TERMINATED WITH A DRYER VENT STYLE WALL CAP WITH BACKDRAFT DAMPER.



Revisions	Date
ADDENDUM 1	06/01/12

ENGINEERS:

APOGEE
Consulting Group, PA
8831 Keystone Crossing
Indianapolis, IN 46240
(317) 819-0200 Fax (919) 858-7423
Apogee Project # 2011 135
Apogee COA# PC80900089

Professional Stamp/Seal

ARCHITECT:

CSO Architects
ARCHITECTURE • INTERIOR DESIGN
8831 Keystone Crossing • Indianapolis, IN 46240
Main 317.848.7800 • Fax 317.574.0957 • csoinc.net



Drawing Title	
MECHANICAL PLANS	
Approved: Robert Nash, CO	Approved:
Approved: Andrew Mercker, COTR	Approved:

Project Title	
ENERGY IMPROVEMENTS & AIR CONDITIONING BUILDING #8, GYM	
Building No. 8	Scale AS SHOWN
Drawn/Checked DMB/JWM	Location VA MEDICAL CENTER ENGINEERING BLDG #52, RM 201 1700 E. 38TH ST. MARION, IN 46953

Date
09/19/11
Project No.
610-10-100
DRAWING NO.
M-202
Dwg. 3 of 7

VA NIHCS Engineering

Department of Veterans Affairs