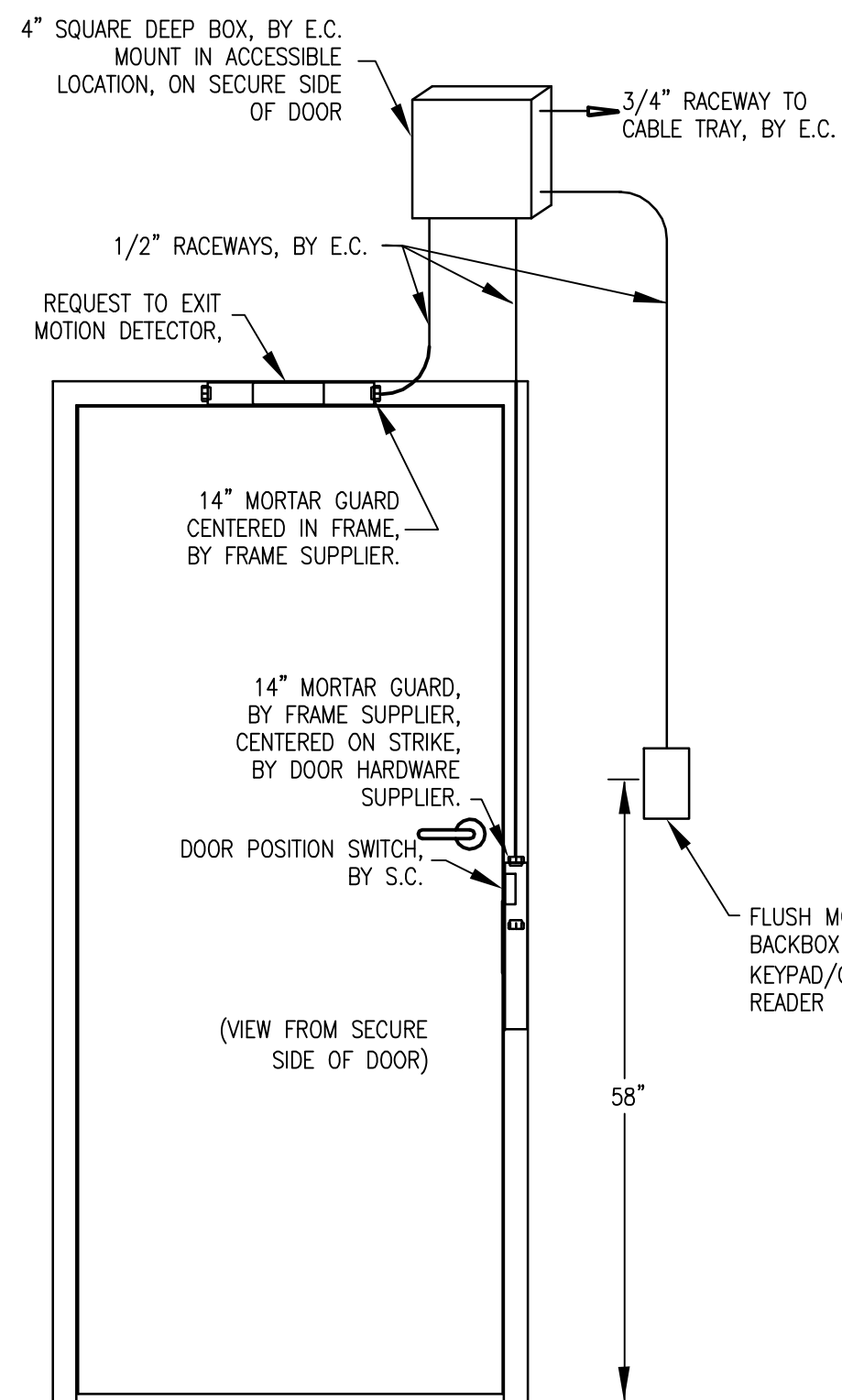


SECURITY FIXTURE SCHEDULE

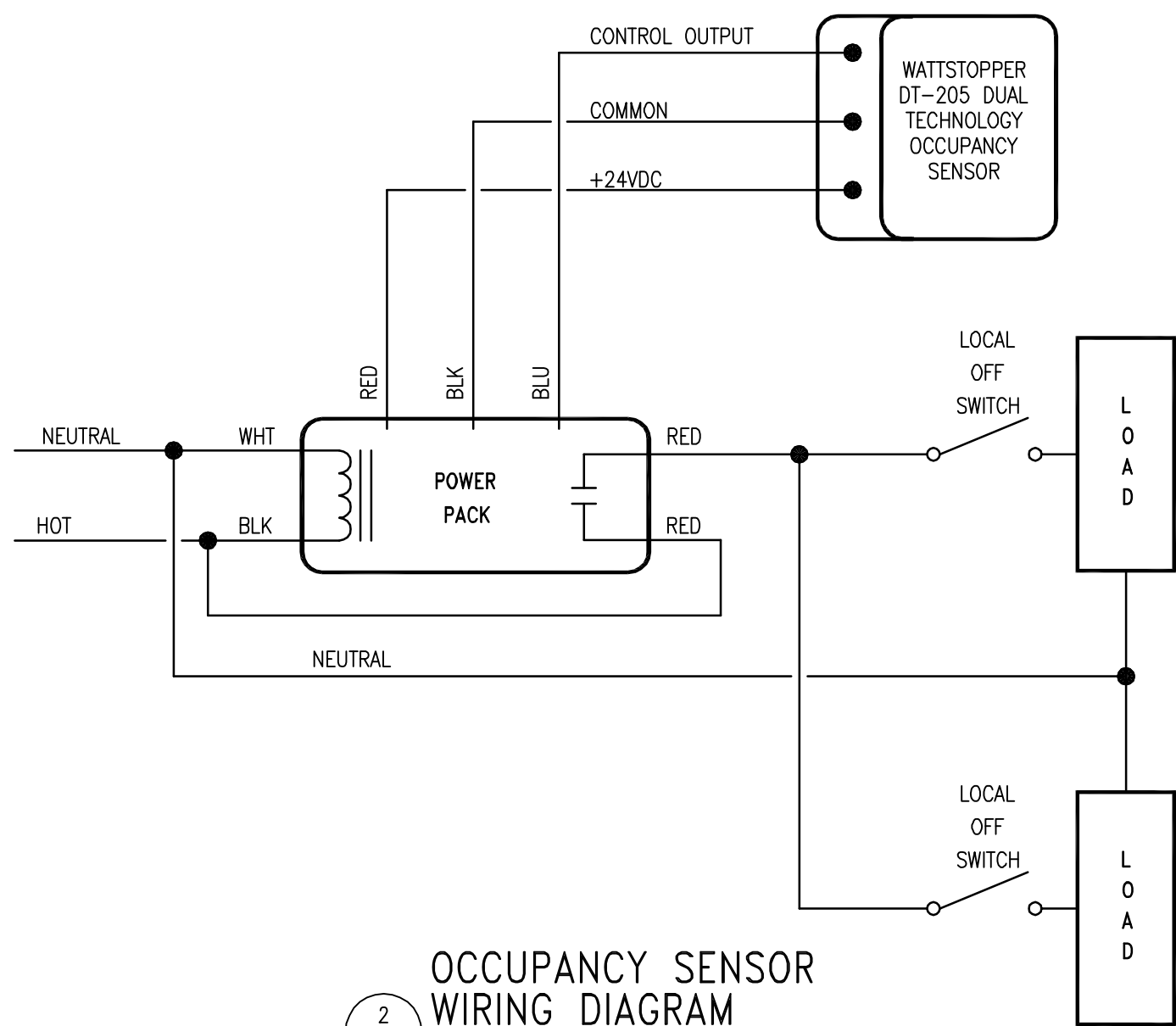
FIX. TYPE	DESCRIPTION	BASIS OF DESIGN		MOUNTING	REMARKS
		MANUFACTURER	CATALOG NUMBER		
C1	FIXED INTERIOR DOME CAMERA	AVIGILON	2.OMP-HD-H264-DC1	CEILING SURFACE	EACH CAMERA REQUIRES ONE LICENSE, MODEL NO.: HD-NVMS-ENT-ADD-1CAM
CR1	SMART CARD READER	HIRSCH ELECTRONICS	MRICRP40PIVA	SURFACE	
CR2	SCRAMBLE PROX CARD READER WIDE DYNAMIC RANGE	HIRSCH ELECTRONICS	DS47L-SSP-HID-HI	SURFACE	
REX	REQUEST TO EXIT MOTION DETECTOR	DETECTION SYSTEMS	DS160	DOOR FRAME SURFACE	
DS	DOOR POSITION SWITCH	GE	1045T	SURFACE	
**	DOOR CONTROLLER	HIRSCH ELECTRONICS	M8N2		
**	ALARM INPUT BOARD	HIRSCH ELECTRONICS	AEB8		
**	RELAY BOARD	HIRSCH ELECTRONICS	REB8		
**	BACK BOX	HIRSCH ELECTRONICS	MB1 (FLUSH MOUNT) MB2 (SURFACE MOUNT)		COORDINATE APPROPRIATE MODEL WITH EACH INSTALLATION
**	MOUNTING KIT	HIRSCH ELECTRONICS	UMK		
**	ELECTRONIC LOCK 24V				SUPPLIED BY DOOR HARDWARE COMPANY

** NOT SHOWN ON ELECTRICAL PLANS, COORDINATE WITH DOOR HARDWARE INSTALLER / SECURITY CONTRACTOR. SEE DETAIL 1, THIS SHEET, FOR MORE INFORMATION. SEE SPEC SECTION 08 71 00 FOR DETAILS ON OPERATION OF SECURITY AND DOOR HARDWARE.

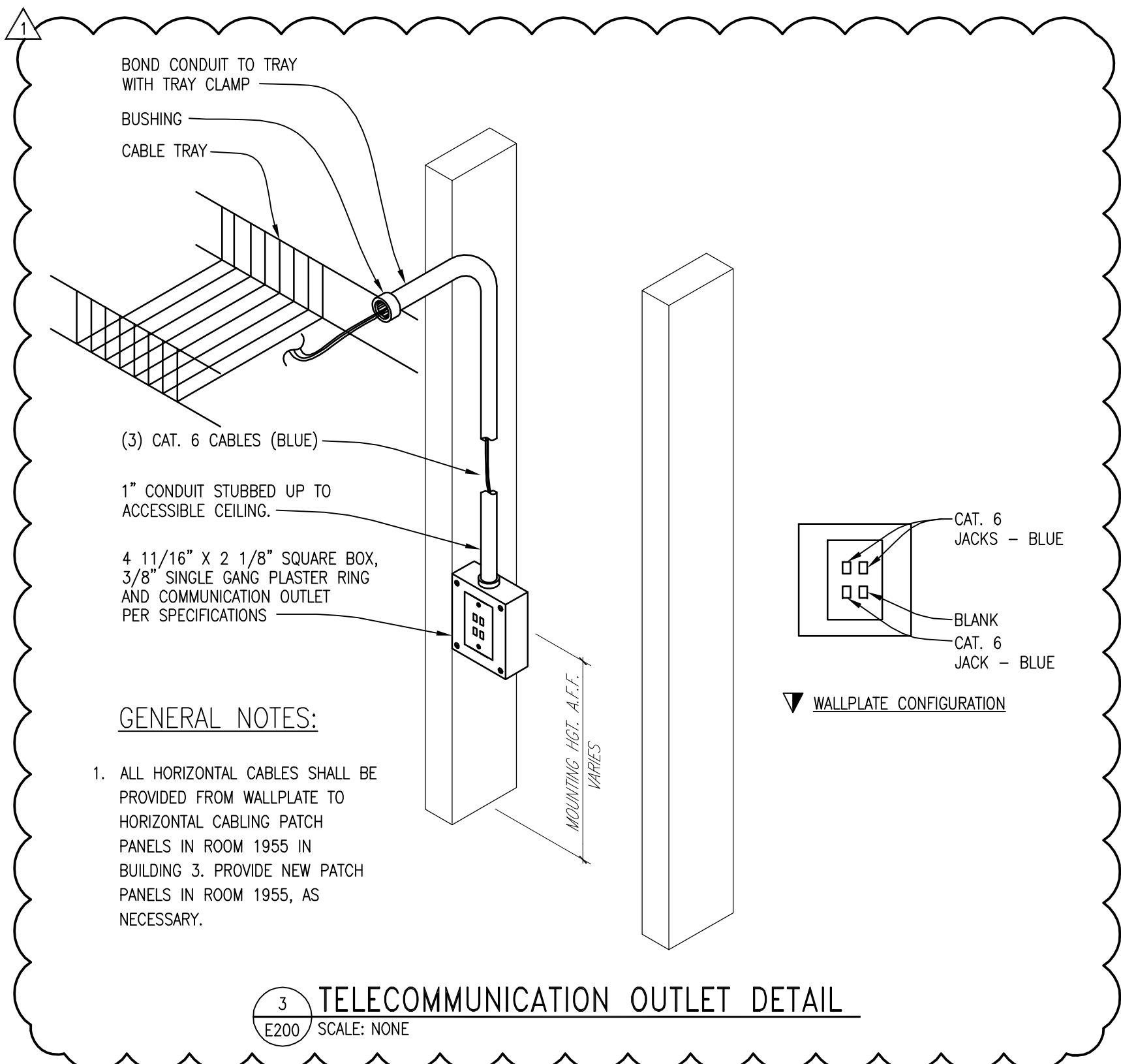


SECURITY SYSTEM NOTES:
1. MORTAR GUARDS REQUIRED FOR GROUTED FRAMES.
2. CABLES TO EQUIPMENT ROOM FURNISHED, INSTALLED AND TERMINATED BY BAKER GROUP.
3. SECURITY SYSTEM CONTRACTOR (S.C.) SHALL BE BAKER GROUP.
4. PROVIDE POWER AS NEEDED TO EQUIPMENT.

1 SECURITY ROUGH-IN DETAIL
E200 SCALE: NONE



2 OCCUPANCY SENSOR WIRING DIAGRAM
E200 SCALE: NONE



3 TELECOMMUNICATION OUTLET DETAIL
E200 SCALE: NONE

LIGHTING FIXTURE SCHEDULE

FIX. TYPE	DESCRIPTION	BASIS OF DESIGN		LAMP				MOUNTING				INPUT WATTS (NOTE: *)	VOLTAGE	REMARKS		
		MANUFACTURER	CATALOG NUMBER	NO.	WATTS	TYPE	CCT	CRI	C	W	R				P	U
A2	2'X4" RECESSED 2 LAMP LENSED FLUORESCENT	LITHONIA	2SP8 G 2 32 A12125 MVOLT GEB10IS	2	32	F32T8	4100K	85				*		58	120	
A3	2'X4" RECESSED 3 LAMP LENSED FLUORESCENT	LITHONIA	2SP8 G 3 32 A12125 MVOLT GEB10IS	3	32	F32T8	4100K	85				*		84	120	PROVIDE 2 BALLASTS FOR INNER/OUTER LAMP SWITCHING
B	2'X4" RECESSED 2 LAMP DIRECT/INDIRECT FLUORESCENT	LITHONIA	2AV G 2 32 MDR MVOLT GEB10IS	2	32	F32T8	4100K	85				*		58	120	
C	8" RECESSED DOWNLIGHT	GOTHAM	AF 2/26TRT 8AR MVOLT (*ECOS)	2	26	26TRT	4100K	82				*		55	120	ASTERISK * DENOTES FIXTURE WITH DIMMING BALLAST, SEE LIGHTING PLANS
D	1-LAMP UNDER CABINET FLUORESCENT	LITHONIA	2UC 1 32 AR 120 GEB10IS SWR	1	32	F32T8	4100K	85					*	32	120	
F	4' GENERAL PURPOSE INDUSTRIAL FLUORESCENT	LITHONIA	Z 2 32 120 GEB10IS WGZ48	2	32	F32T8	4100K	85	*					58	120	
G	4' VANDAL RESISTANT FLUORESCENT TROFFER	LITHONIA	2VRT F 3 32 VL MVOLT GEB10IS	3	32	F32T8	4100K	85	*					84	120	
⊗	LED EXIT LIGHT - RED LETTERS	LITHONIA	LE S 1/2 R 120/277 EL N			LED										

ELECTRICAL LIGHTING FIXTURE SCHEDULE NOTES:

- MANUFACTURERS AND CATALOG NUMBERS ARE LISTED TO ESTABLISH A LEVEL OF QUALITY AND OPERATIONAL REQUIREMENTS. ALL LIGHTING FIXTURES SHALL MEET THE FUNCTIONAL REQUIREMENTS OF THE FIXTURE DESCRIPTION AND DETAILS ON THIS SHEET.
- FIXTURES SHALL BE FURNISHED COMPLETE AND WITH ALL NECESSARY ACCESSORIES OR ADDITIONAL COMPONENTS REQUIRED TO MEET THE FUNCTIONAL SPECIFICATION OR TO MEET THE CHARACTERISTICS OF THE CONSTRUCTION IN WHICH THE FIXTURE IS TO BE INSTALLED.
- COORDINATE FIXTURE MOUNTING REQUIREMENTS WITH THE ARCHITECTURAL CEILING PLANS, ANY EXISTING CONDITIONS, THE WORK OF OTHER TRADES, AND THE GENERAL CONTRACTOR AND PROVIDE FIXTURE TYPES WHICH FIT THE ACTUAL CEILINGS TO BE PROVIDED. FAILURE TO PERFORM THIS REQUIRED COORDINATION SHALL NOT BE CAUSE FOR ADDITIONAL COMPENSATION, AND ANY CONFLICTS SHALL BE CORRECTED BY THE CONTRACTOR.
- COORDINATE FIXTURE VOLTAGES WITH THOSE SHOWN ON THE DRAWINGS AND PROVIDE FIXTURES AND ACCESSORIES ACCORDINGLY, REGARDLESS OF VOLTAGE SHOWN IN THE FIXTURE SCHEDULE.
- MOUNTING INDICATIONS IN THE LIGHTING FIXTURE SCHEDULE ARE DEFINED AS FOLLOWS: C - CEILING SURFACE MOUNTED; W - WALL MOUNTED; R - CEILING RECESSED MOUNTED; P - PENDANT MOUNTED; U - UNDERCABINET MOUNTED.
- PROVIDE LAMPS AS SPECIFIED OR AS REQUIRED FOR ALL FIXTURES. ALL LAMPS SHALL BE NEW. ALL LAMPS OF THE SAME TYPE SHALL BE BY THE SAME MANUFACTURER TO MATCH PROPERTIES.
- CONTRACTOR SHALL PROVIDE ALL LAMPS. ALL FLUORESCENT LAMPS SHALL BE BY SAME MANUFACTURER IN ORDER TO MATCH COLOR PHOSPHERS. T8 FLUORESCENT LAMPS SHALL BE REDUCED MERCURY CONTENT DESIGN, MIN. 3100 INITIAL LUMENS, MIN. 36,000 HOUR LIFE (3HR/START). LAMP/BALLAST SYSTEM SHALL PROVIDE A MINIMUM OF 90 LUMENS/WATT.
- COMPACT FLUORESCENT LAMPS SHALL HAVE A MINIMUM AVERAGE LIFE OF 10,000 HOURS, UNLESS OTHERWISE INDICATED.
- FLUORESCENT LAMPS SHALL BE REDUCED MERCURY TYPE, MEETING FEDERAL TCLP CRITERIA.
- BALLASTS FOR FLUORESCENT AND COMPACT FLUORESCENT FIXTURES SHALL BE HIGH POWER FACTOR (98% MINIMUM) ELECTRONIC TYPE, CLASS P, 'A' SOUND RATING, AND SHALL BE CBM, ETL, AND UL LISTED. WHERE INDICATED ON THE DRAWINGS, BALLASTS SHALL BE WIRED FOR INSIDE/OUTSIDE LAMP SWITCHING ON FIXTURES CONTAINING THREE OR MORE LAMPS.
- DIMMING BALLASTS FOR FLUORESCENT AND COMPACT FLUORESCENT FIXTURES SHALL BE SIMILAR TO THE NON-DIMMING BALLASTS EXCEPT THAT THEY SHALL PROVIDE FOR CONTROLLED LAMP DIMMING FROM FULL OUTPUT TO A MINIMUM OF 5% OUTPUT. MINIMUM LAMP STARTING TEMPERATURE FOR DIMMING BALIASTS SHALL BE 50 DEGREES F. DIMMING CONTROLS AND DIMMING BALLASTS SHALL BE PROVIDED AS COMPATIBLE ASSEMBLIES. DIMMING BALLASTS SHALL BE PROVIDED WHERE INDICATED AS BEING DIMMED ON THE DRAWINGS. LAMPS CONNECTED TO DIMMING BALLASTS MUST HAVE A MINIMUM 100 HOUR BURN TIME AT FULL LUMEN OUTPUT PRIOR TO DIMMING.
- LENSED FLUORESCENT TROFFERS SHALL BE FITTED WITH WHITE FLUSH ALUMINUM DOOR FRAMES WITH MITERED CORNERS, HINGES AND CAM TYPE LATCHES. LENSES SHALL BE 100% VIRGIN ACRYLIC LIGHT STABLE PRISMATIC PLASTIC WITH NEMA PATTERN K-12, UNLESS OTHERWISE NOTED. LENS THICKNESS SHALL BE 0.125" MINIMUM, 0.140" NOMINAL.
- PROVIDE WIRE GUARDS ON ALL FIXTURES HAVING EXPOSED LAMPS THAT ARE NOT INSTALLED IN COVES.
- INDUSTRIAL FLUORESCENT FIXTURES SHALL BE PROVIDED WITH REFLECTORS AND 10% MINIMUM UPLIGHT.
- COORDINATE LOCATIONS OF FIXTURES IN MECHANICAL AND ELECTRICAL ROOMS SO AS TO BEST ILLUMINATE THE SPACE AND TO BEST COORDINATE WITH THE EQUIPMENT IN THE ROOM. CHAIN MOUNTING OF INDUSTRIAL FIXTURES IN THESE AREAS IS ACCEPTABLE.
- PROVIDE PLASTIC SHATTER SHIELDS ON ALL EXPOSED LAMPS INSTALLED IN FOOD PREPARATION OR FOOD HANDLING AREAS, OR AS OTHERWISE INDICATED.
- EXIT SIGNS SHALL HAVE RED LETTERS, SHALL BE PROVIDED WITH LED LAMPS, SINGLE OR DUAL FACE AS INDICATED, AND SHALL BE CEILING OR WALL MOUNTED AS INDICATED.
- FLUORESCENT FIXTURES INDICATED WITH AN 'E' INDICATES FIXTURE SHALL HAVE BACK UP POWER PROVIDED BY A BATTERY PACK.
- UNDERCABINET LIGHTING FIXTURES SHALL BE COMBINATIONS OF 2', 3', AND/OR 4' LENGTHS TO UNIFORMLY ILLUMINATE THE COUNTER SPACE BELOW. FIXTURES SHALL BE LOW PROFILE SOLID FRONT TYPE.

ADDENDUM NO.1	5/30/12
Revisions	Date

CONSULTANTS:

ARCHITECT/ENGINEERS:

LEO A DAILY PLANNING ARCHITECTURE ENGINEERING INTERIORS
EST. 1915

8600 Indian Hills Drive
Omaha, NE 68114-4039 USA
Tel 402-391-6111 Fax 402-391-8564

Architect Project No.
003-10121-002

Drawing Title
ELECTRICAL SCHEDULES AND DETAILS

Project Title
**REMODEL
ADMINISTRATIVE SPACE**

Project Number
636A6-11-913

Building Number
3

Location
DES MOINES, IA

Date
03.23.2012

Checked
JKN

Drawn
DJC

Drawing Number
E200

Dwg. 7 of 7

Office of
Construction
and Facilities
Management

Department of
Veterans Affairs