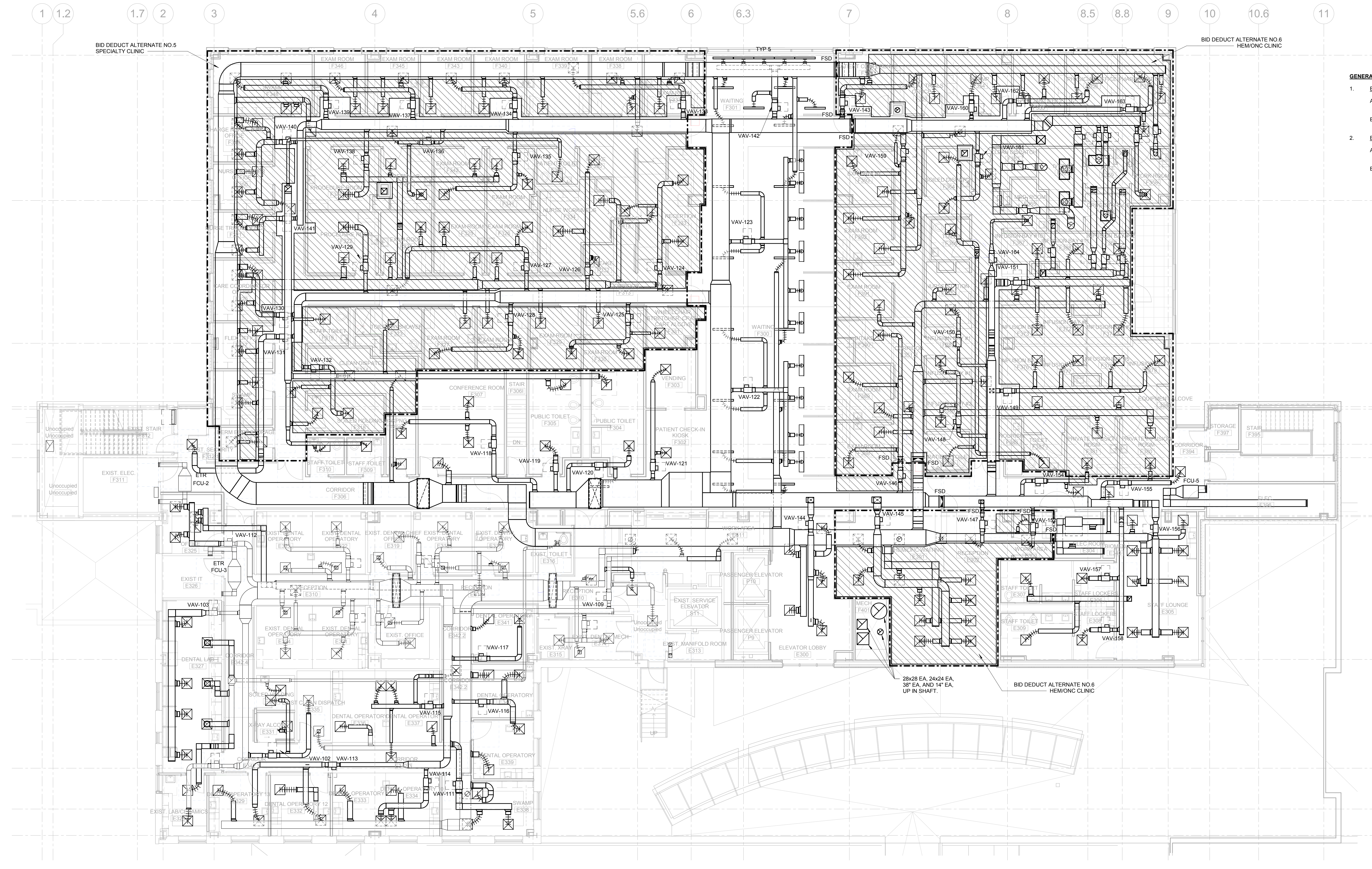


three eighths inch = one foot
one eighth inch = one foot
one quarter inch = one foot
one half inch = one foot
three quarters inch = one foot
one inch = one foot
one and one half inches = one foot
two inches = one foot
three inches = one foot
four inches = one foot
five inches = one foot
six inches = one foot
seven inches = one foot
eight inches = one foot
nine inches = one foot
ten inches = one foot
eleven inches = one foot
twelve inches = one foot
thirteen inches = one foot
fourteen inches = one foot
fifteen inches = one foot
sixteen inches = one foot
seventeen inches = one foot
eighteen inches = one foot
nineteen inches = one foot
twenty inches = one foot
twenty one inches = one foot
twenty two inches = one foot
twenty three inches = one foot
twenty four inches = one foot
twenty five inches = one foot
twenty six inches = one foot
twenty seven inches = one foot
twenty eight inches = one foot
twenty nine inches = one foot
thirty inches = one foot
thirty one inches = one foot
thirty two inches = one foot
thirty three inches = one foot
thirty four inches = one foot
thirty five inches = one foot
thirty six inches = one foot
thirty seven inches = one foot
thirty eight inches = one foot
thirty nine inches = one foot
forty inches = one foot
forty one inches = one foot
forty two inches = one foot
forty three inches = one foot
forty four inches = one foot
forty five inches = one foot
forty six inches = one foot
forty seven inches = one foot
forty eight inches = one foot
forty nine inches = one foot
fifty inches = one foot
fifty one inches = one foot
fifty two inches = one foot
fifty three inches = one foot
fifty four inches = one foot
fifty five inches = one foot
fifty six inches = one foot
fifty seven inches = one foot
fifty eight inches = one foot
fifty nine inches = one foot
sixty inches = one foot
sixty one inches = one foot
sixty two inches = one foot
sixty three inches = one foot
sixty four inches = one foot
sixty five inches = one foot
sixty six inches = one foot
sixty seven inches = one foot
sixty eight inches = one foot
sixty nine inches = one foot
seventy inches = one foot
seventy one inches = one foot
seventy two inches = one foot
seventy three inches = one foot
seventy four inches = one foot
seventy five inches = one foot
seventy six inches = one foot
seventy seven inches = one foot
seventy eight inches = one foot
seventy nine inches = one foot
eighty inches = one foot
eighty one inches = one foot
eighty two inches = one foot
eighty three inches = one foot
eighty four inches = one foot
eighty five inches = one foot
eighty six inches = one foot
eighty seven inches = one foot
eighty eight inches = one foot
eighty nine inches = one foot
ninety inches = one foot
ninety one inches = one foot
ninety two inches = one foot
ninety three inches = one foot
ninety four inches = one foot
ninety five inches = one foot
ninety six inches = one foot
ninety seven inches = one foot
ninety eight inches = one foot
ninety nine inches = one foot
one hundred inches = one foot



- GENERAL NOTES: (THIS SHEET ONLY)**
- BID DEDUCT NO. 5**
 - REMOVE HATCHED DUCT, VAV, HW PIPING AND CONTROLS.
 - UNHATCHED VAV BOXES AND DUCT HEADERS TO REMAIN.
 - BID DEDUCT NO. 6**
 - REMOVE HATCHED DUCT, VAV, HW PIPING AND CONTROLS.
 - UNHATCHED VAV BOXES AND DUCT HEADERS TO REMAIN.

2 THIRD FLOOR PLAN - HVAC DUCTWORK PLAN - ALTERNATE NO. 5 & 6
1/8" = 1'-0"

CONSULTANTS:		ARCHITECT/ENGINEERS:		Drawing Title		Project Title		100% CONSTRUCTION DOCUMENTS - ISSUE FOR BID			
<div>AcoustiControl Acoustical Engineer 2464 Taylor Road Suite 214 Wildwood, MO 63040 314.436.9770</div>		<div>The Schachinger Group Elevator 4255 Stoney Creek Drive Fort Collins, CO 80525 973.698.2263</div>		<div>CANNONDESIGN 1100 Clark Avenue St. Louis, Missouri 63102 T: 314.241.6250 F: 314.241.2570</div>		THIRD FLOOR PLAN - HVAC DUCTWORK ALTERNATE PLAN - BID DEDUCT NO. 5 & 6		Harry S. Truman Memorial Veterans' Hospital Expand Ambulatory Care Addition		<div>Project Number 589-333 CANNON DESIGN PROJECT NO. 3850.06 Building Number</div>	
<div>1 Addendum 02 06/08/17 Revisions: Date</div>		<div></div>		<div>Approved: Project Director</div>		<div>Location Columbia, Missouri</div>		<div>Drawing Number MH-103.2A Dwg. of</div>		<div>Office of Construction and Facilities Management Department of Veterans Affairs</div>	
						<div>Date JANUARY 13, 2017</div>		<div>Checked Checker</div>		<div>Drawn Author</div>	