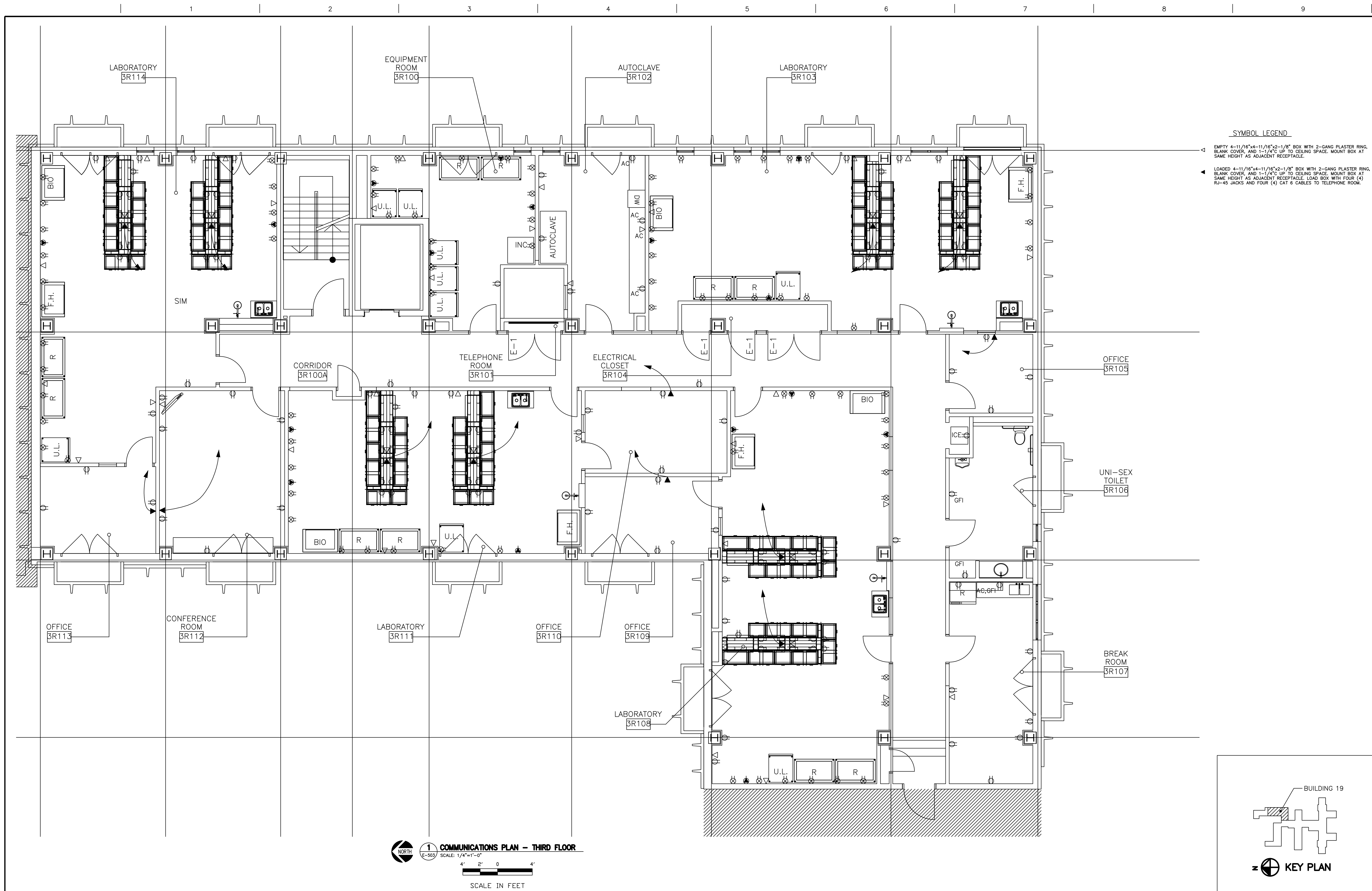


three inches = one foot  
one and one half inches = one foot  
one inch = one foot  
three quarters inch = one foot  
one half inch = one foot  
one eighth inch = one foot  
one quarter inch = one foot  
one eighth inch = one foot



**SYMBOL LEGEND**

▲ EMPTY 4-11/16"x4-11/16"x2-1/8" BOX WITH 2-GANG PLASTER RING, BLANK COVER, AND 1-1/4" C. UP TO CEILING SPACE. MOUNT BOX AT SAME HEIGHT AS ADJACENT RECEPTACLE.

▲ LOADED 4-11/16"x4-11/16"x2-1/8" BOX WITH 2-GANG PLASTER RING, BLANK COVER, AND 1-1/4" C. UP TO CEILING SPACE. MOUNT BOX AT SAME HEIGHT AS ADJACENT RECEPTACLE. LOAD BOX WITH FOUR (4) RJ-45 JACKS AND FOUR (4) CAT 6 CABLES TO TELEPHONE ROOM.

<b>Revisions:</b> <table><tr><td> </td><td> </td></tr><tr><td> </td><td> </td></tr><tr><td> </td><td> </td></tr><tr><td> </td><td> </td></tr><tr><td> </td><td> </td></tr></table>											<b>CONSULTANTS:</b> <table><tr><td> </td><td> </td></tr><tr><td> </td><td> </td></tr><tr><td> </td><td> </td></tr><tr><td> </td><td> </td></tr><tr><td> </td><td> </td></tr></table>											<b>ARCHITECT/ENGINEERS:</b> <table><tr><td> </td><td> </td></tr><tr><td> </td><td> </td></tr><tr><td> </td><td> </td></tr><tr><td> </td><td> </td></tr><tr><td> </td><td> </td></tr></table>											<table><tr><td colspan="2"><b>Drawing Title</b> THIRD FLOOR COMMUNICATIONS PLAN</td></tr><tr><td colspan="2">Approved Medical Center Director</td></tr><tr><td colspan="2">Approved Chief, Engineers</td></tr><tr><td colspan="2">Approved Chief, Projects</td></tr></table>	<b>Drawing Title</b> THIRD FLOOR COMMUNICATIONS PLAN		Approved Medical Center Director		Approved Chief, Engineers		Approved Chief, Projects		<table><tr><td colspan="3"><b>Project Title</b> BUILDING 19</td></tr><tr><td colspan="3">Location VA MEDICAL CENTER OKLAHOMA CITY, OKLAHOMA</td></tr><tr><td>Date MAY 2012</td><td>Checked</td><td>Drawn</td></tr></table>	<b>Project Title</b> BUILDING 19			Location VA MEDICAL CENTER OKLAHOMA CITY, OKLAHOMA			Date MAY 2012	Checked	Drawn	<table><tr><td><b>Project Number</b></td></tr><tr><td><b>Building Number</b> Bldg. 1</td></tr><tr><td><b>Drawing Number</b> Dwg. 15 of 16</td></tr></table>	<b>Project Number</b>	<b>Building Number</b> Bldg. 1	<b>Drawing Number</b> Dwg. 15 of 16	<table><tr><td><b>Office of OKC VAMC ENGINEERING PROJECTS</b></td></tr><tr><td> <b>Department of Veterans Affairs</b></td></tr></table>	<b>Office of OKC VAMC ENGINEERING PROJECTS</b>	<b>Department of Veterans Affairs</b>
<b>Drawing Title</b> THIRD FLOOR COMMUNICATIONS PLAN																																																										
Approved Medical Center Director																																																										
Approved Chief, Engineers																																																										
Approved Chief, Projects																																																										
<b>Project Title</b> BUILDING 19																																																										
Location VA MEDICAL CENTER OKLAHOMA CITY, OKLAHOMA																																																										
Date MAY 2012	Checked	Drawn																																																								
<b>Project Number</b>																																																										
<b>Building Number</b> Bldg. 1																																																										
<b>Drawing Number</b> Dwg. 15 of 16																																																										
<b>Office of OKC VAMC ENGINEERING PROJECTS</b>																																																										
<b>Department of Veterans Affairs</b>																																																										