

ONE INCH = FORTY FEET (1" = 40')

THREE INCHES = ONE FOOT

ONE AND ONE HALF INCHES = ONE FOOT

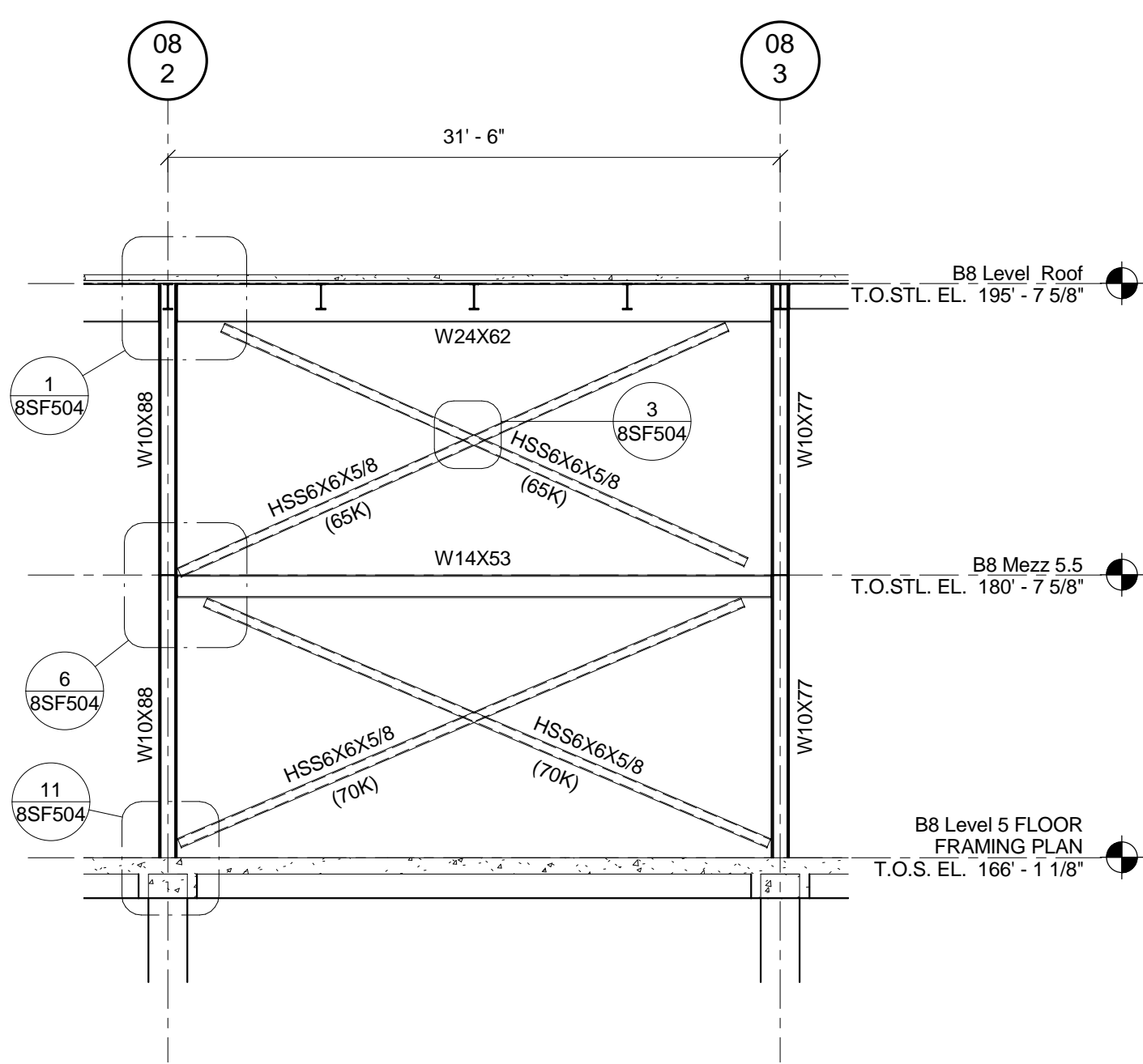
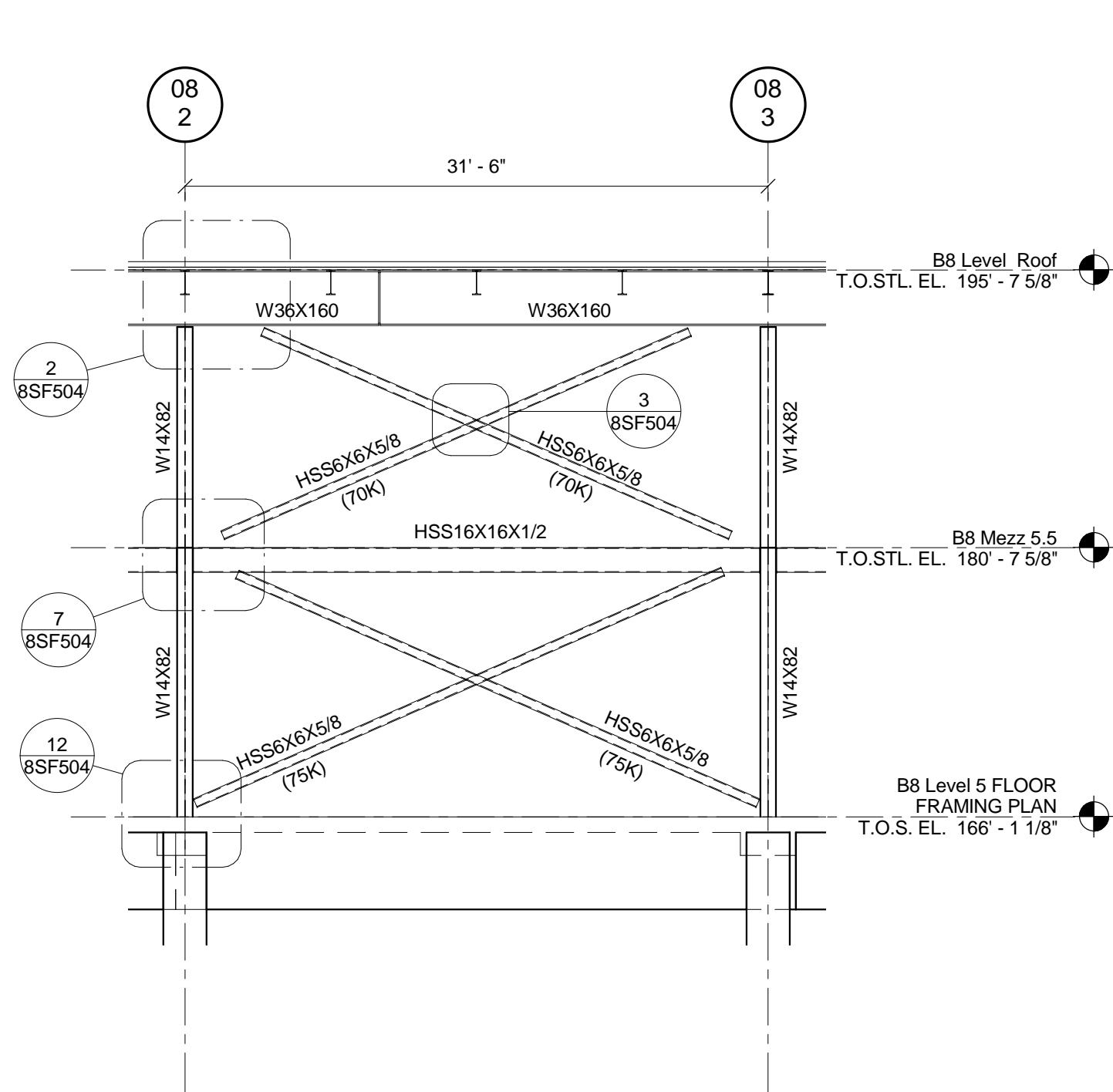
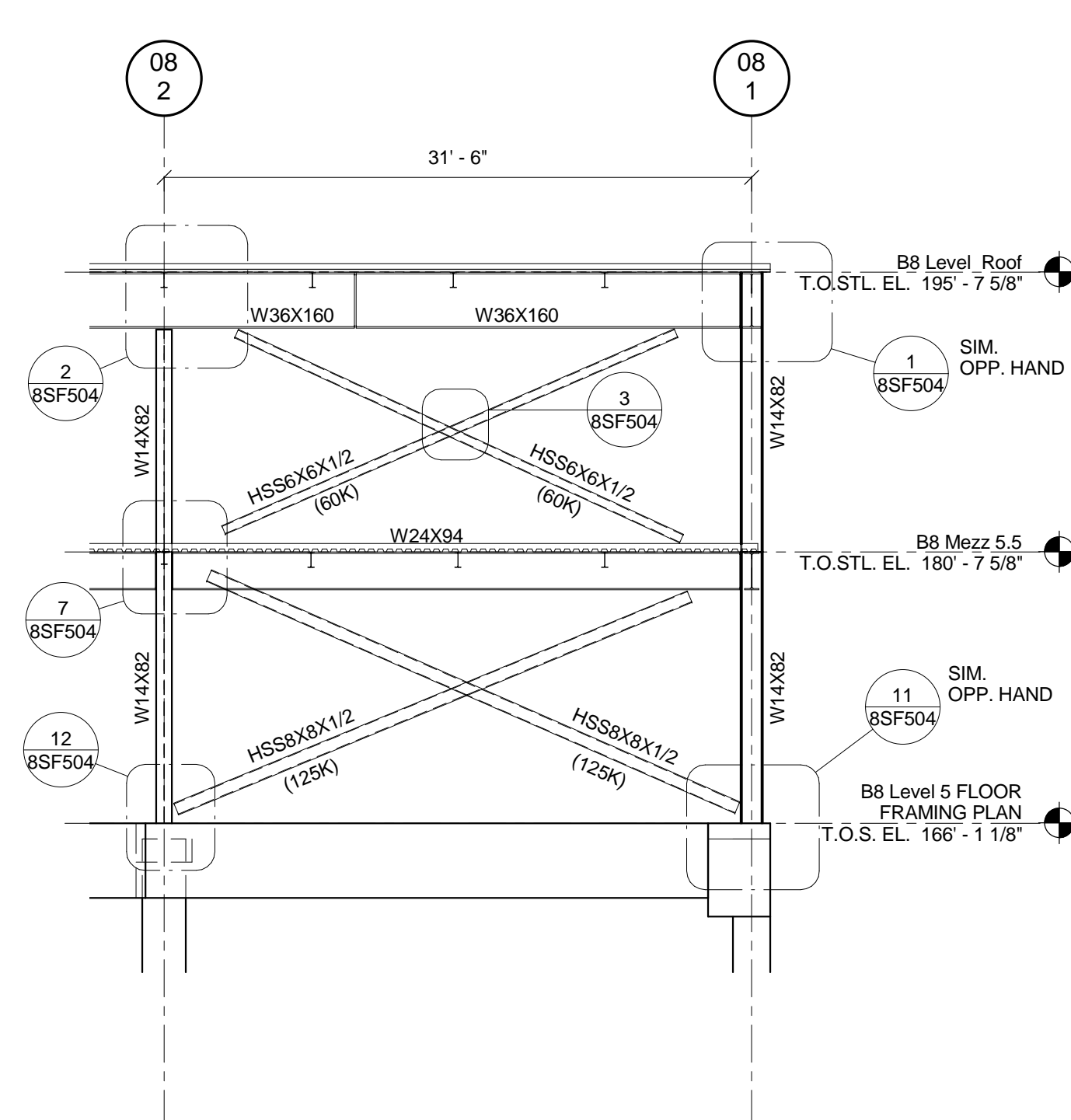
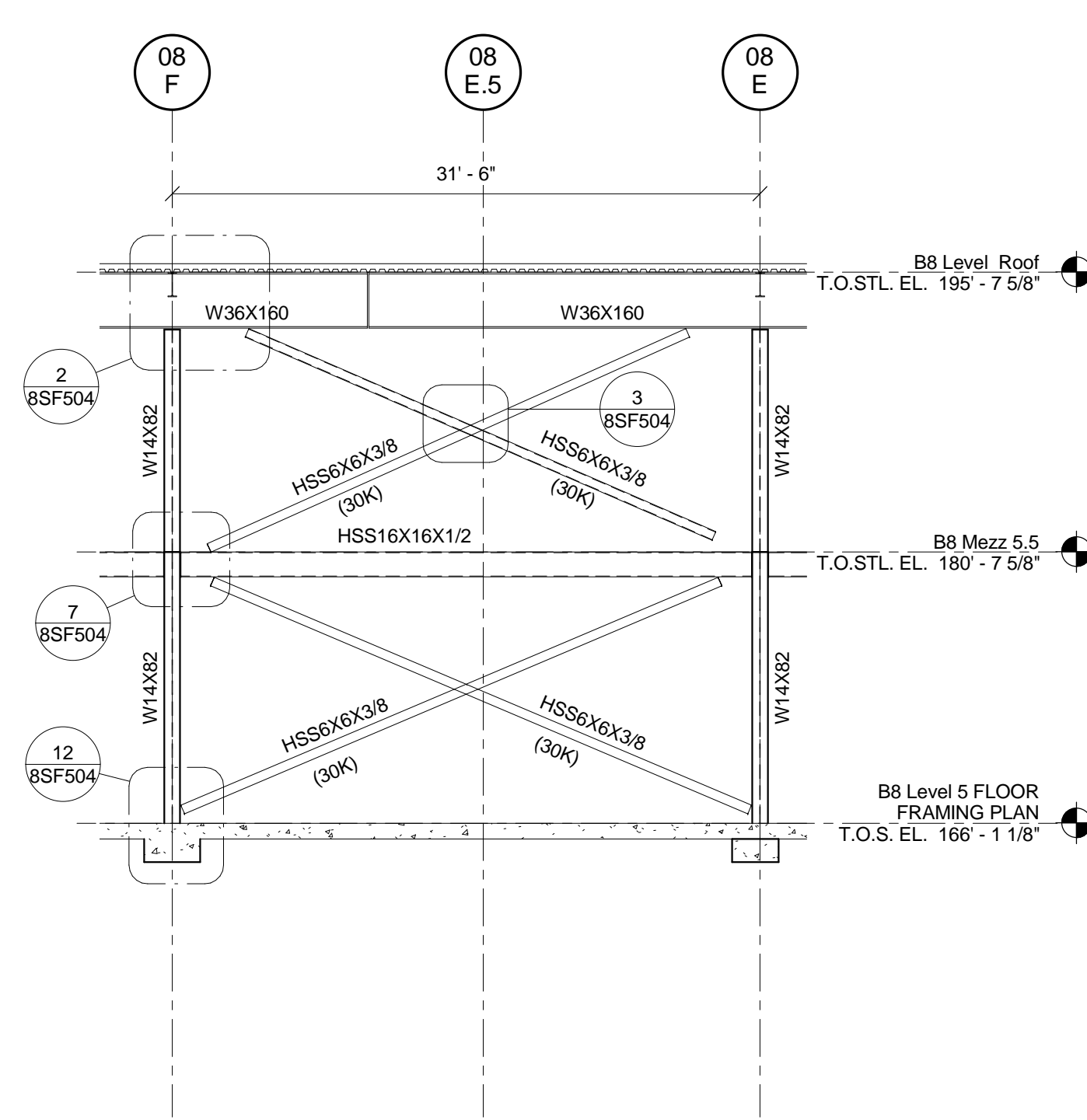
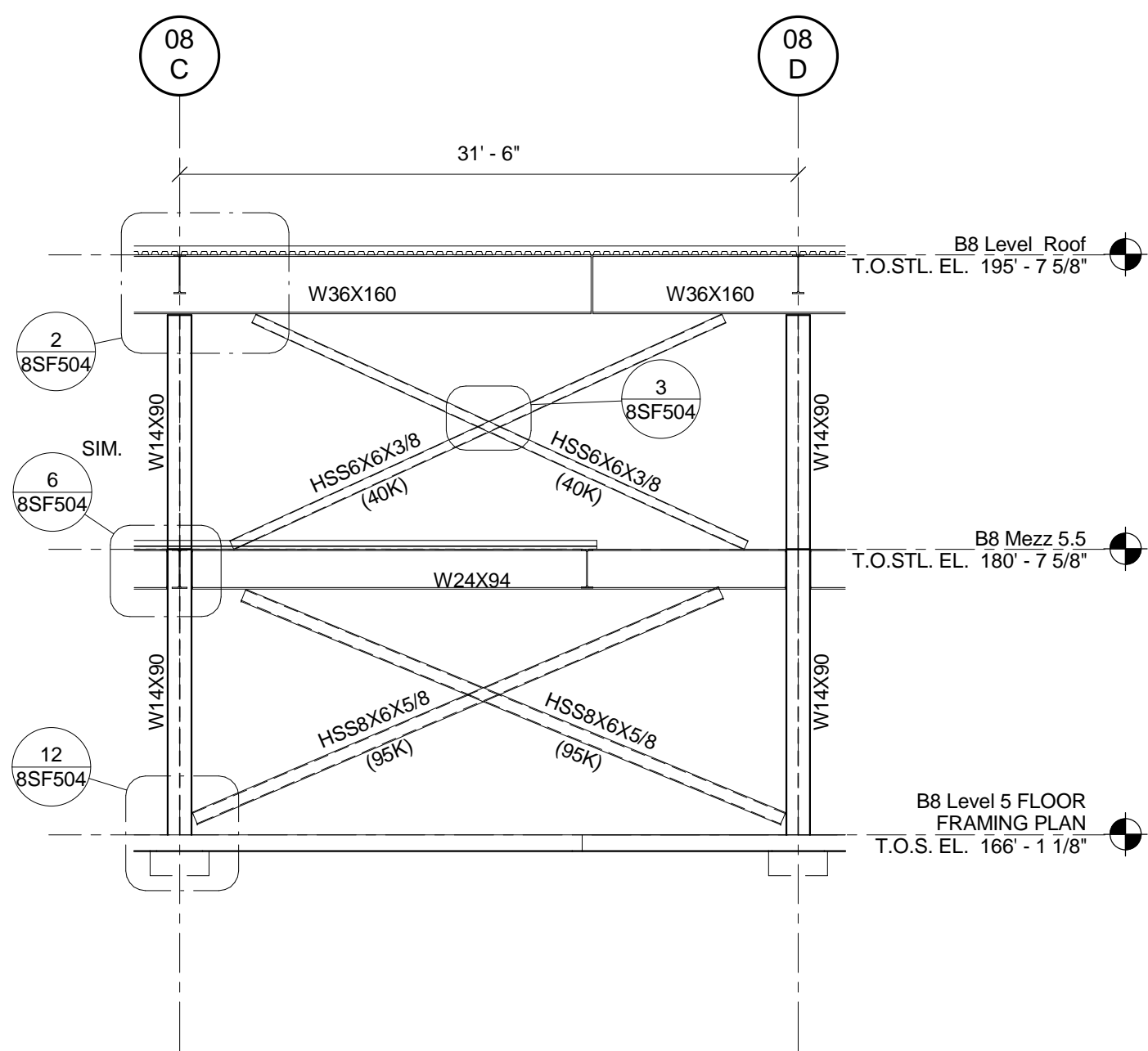
THREE QUARTERS INCH = ONE FOOT

ONE HALF INCH = ONE FOOT

ONE QUARTER INCH = ONE FOOT

ONE EIGHT INCH = ONE FOOT

ONE SIXTEENTH INCH = ONE FOOT

1 ELEVATION ALONG LINE 08F  
1/8" = 1'-0"2 ELEVATION ALONG LINE 08J  
1/8" = 1'-0"3 ELEVATION ALONG LINE 08A  
1/8" = 1'-0"4 ELEVATION ALONG LINE 084  
1/8" = 1'-0"5 ELEVATION ALONG LINE 081  
1/8" = 1'-0"

REVISIONS:	DATE	CONSULTANTS:
		DESMAN ASSOCIATES / PARKING
		CODE CONSULTANTS, INC. / CODE CONSULTANT
		THE SEXTANT GROUP / AV & ACOUSTICAL
		HAMMER DESIGN ASSOCIATES / FOOD SERVICE
		PYBURN & ODOM / ABATEMENT
		TATA & HOWARD / TANK CONSULTANT
		I.S.C. GROUP, INC. / IRRIGATION
		DAN EUSER WATER ARCHITECTURE, INC. / WATER FEATURE

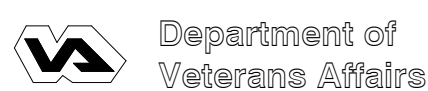


## ARCHITECT/ENGINEERS:

studio **NOVA**  
SCHRENK & PETERSON CONSULTING ENGINEERS / CIVIL  
KORDA/NEMETH ENGINEERING / STRUCTURAL  
BR+A CONSULTING ENGINEERS / MECH, ELECT, PLUMBING, LOW VOLTAGE  
ARCHITECTURAL ENGINEERING / PLUMBING  
SCALES ASSOCIATES / FIRE PROTECTION  
COMMUNICATIONS DESIGN GROUP / LOW VOLTAGE

DRAWING TITLE  
BRACING ELEVATIONS

APPROVED: PROJECT DIRECTOR

PROJECT TITLE  
SLV/HCS REPLACEMENT MEDICAL  
CENTER PROJECTLOCATION  
NEW ORLEANS, LOUISIANADATE  
July16, 2012CHECKED  
TMDDRAWN  
RJCPROJECT NUMBER  
629-HS2-401  
BUILDING NUMBER  
8  
DOCUMENT SET PACKAGE  
WP\_09BDRAWING NUMBER  
8SF202OFFICE OF  
CONSTRUCTION  
AND FACILITIES  
MAINTENANCECONSTRUCTION DOCUMENTS 1  
FULLY SPRINKLERED