

ONE INCH = FORTY FEET (1" = 40')

ONE AND ONE HALF INCHES = ONE FOOT

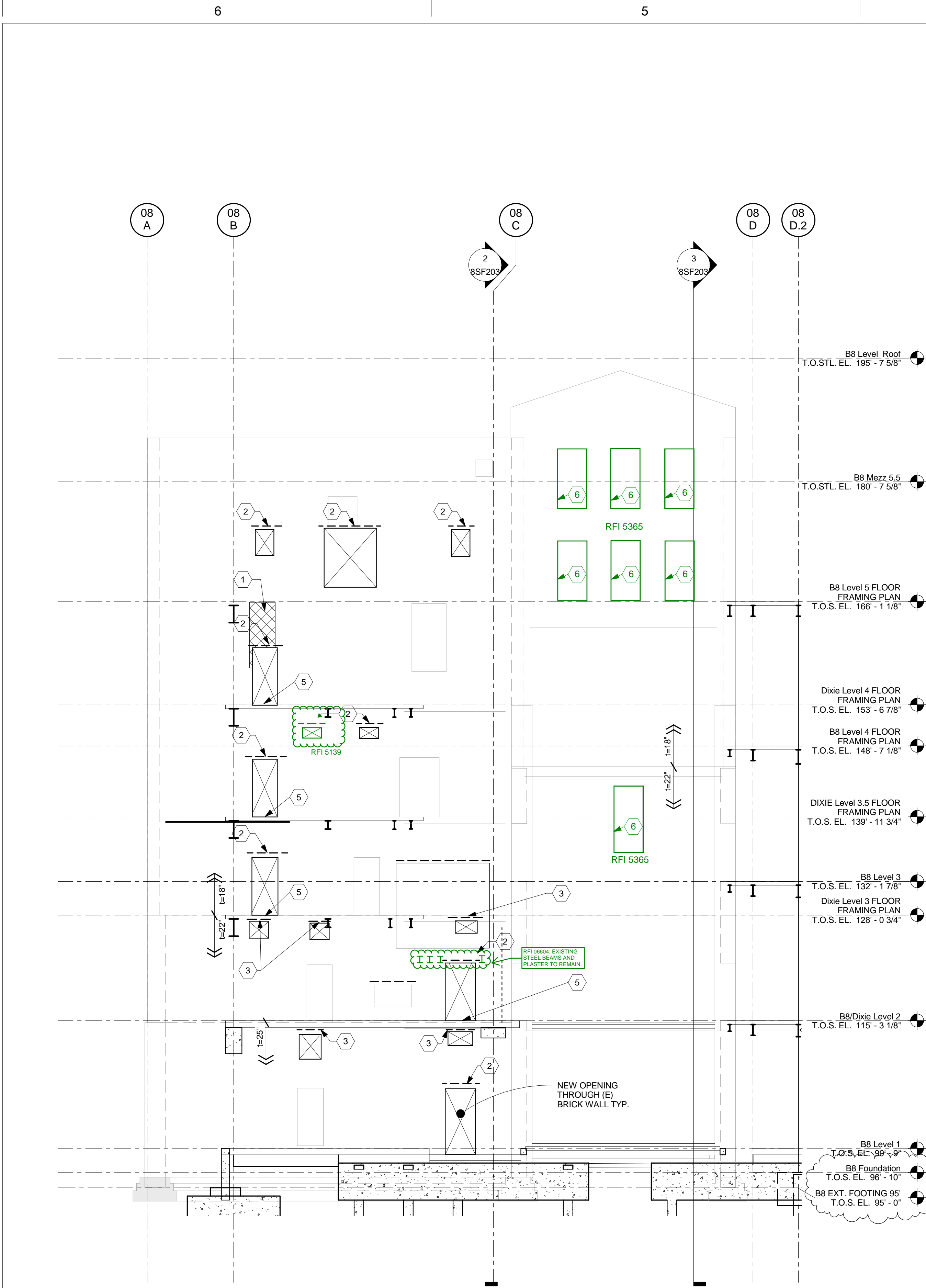
THREE QUARTERS INCH = ONE FOOT

ONE HALF INCH = ONE FOOT

ONE QUARTER INCH = ONE FOOT

ONE EIGHT INCH = ONE FOOT

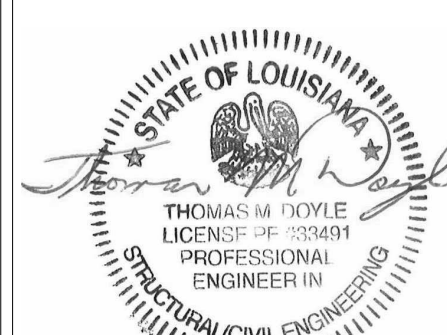
ONE SIXTEENTH INCH = ONE FOOT



1 NORTH ELEVATION
1/8" = 1'-0"

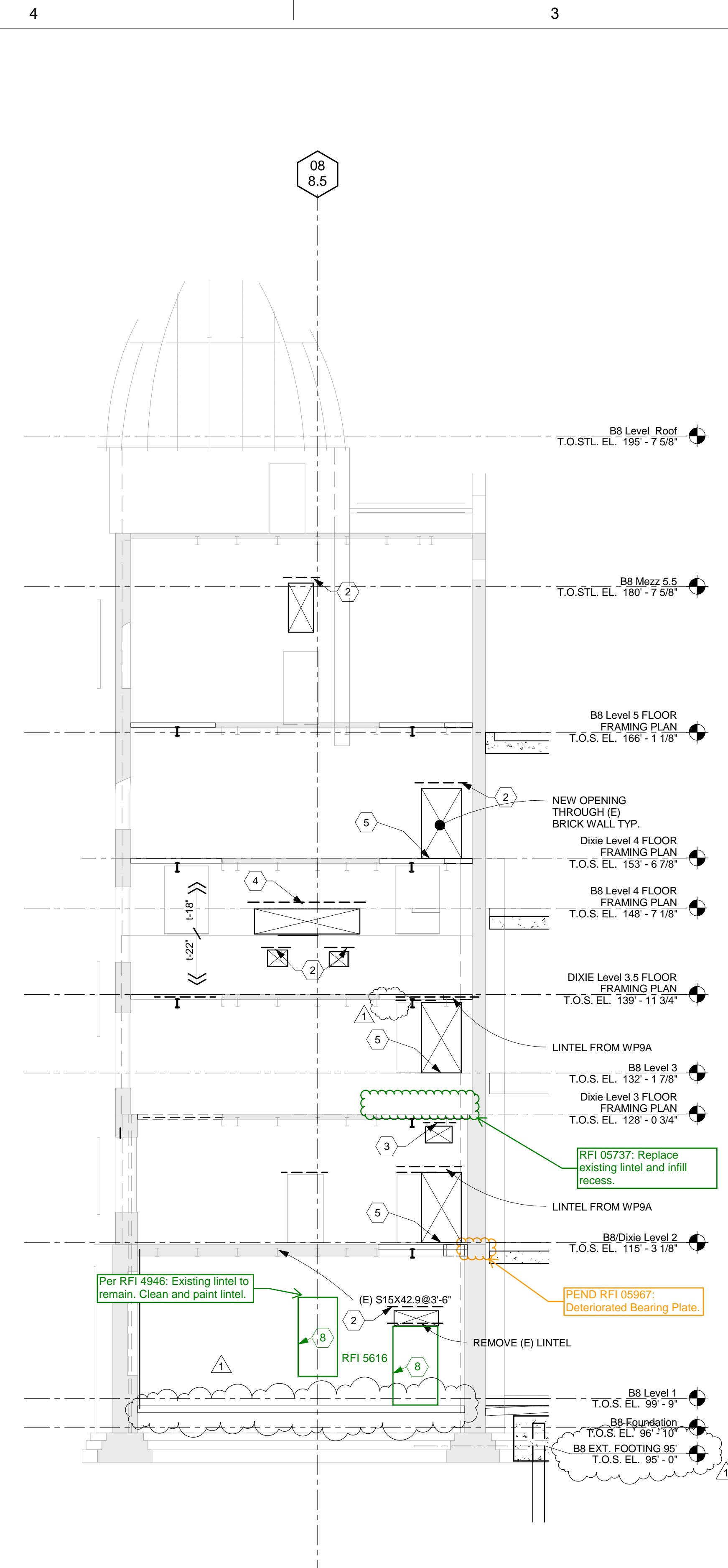
- CODDED NOTES
- 1 FILL IN (E) OPENING WITH BRICK FOR FULL THICKNESS OF WALL. W8x18 W/ 5/16 BOT. PLATE & 6" BRG. SEE 15/8SF510.
 - 2 W10X22 W/ 5/16 BOT. PLATE & 14" BRG. SEE 16/8SF510.
 - 3 W8X24 W/ 5/16 BOT. PLATE & 12" BRG. ON 3/4X12X12 BRG. PLATE SEE: 15/8SF510
 - 4 SEE 14/8SF512 FOR FLOOR DETAIL AT NEW OPENINGS IN (E) BRICK WALLS.
 - 5 3/8X7 1/2 PLATE FRAME W/ 3/4"Ø ADHESIVE ANCHORS @ 12" O.C. PER 11/8SF512
 - 6 3/8X7 1/2 PLATE FRAME W/ 3/4"Ø ADHESIVE ANCHORS @ 12" O.C. PER 10B/8SF512
 - 7 3/8X10 PLATE FRAME W/ 3/4"Ø ADHESIVE ANCHORS @ 8" O.C. PER 10A/8SF512

1 ADDENDUM #1	09/21/12
REVISIONS:	DATE
CONSULTANTS: DESMAN ASSOCIATES / PARKING CODE CONSULTANTS, INC. / CODE CONSULTANT THE SEXTANT GROUP / AV & ACOUSTICAL HAMMER DESIGN ASSOCIATES / FOOD SERVICE PYBURN & ODOM / ABATEMENT TATA & HOWARD / TANK CONSULTANT I.S.C. GROUP, INC. / IRRIGATION DAN EUSER WATER ARCHITECTURE, INC. / WATER FEATURE	

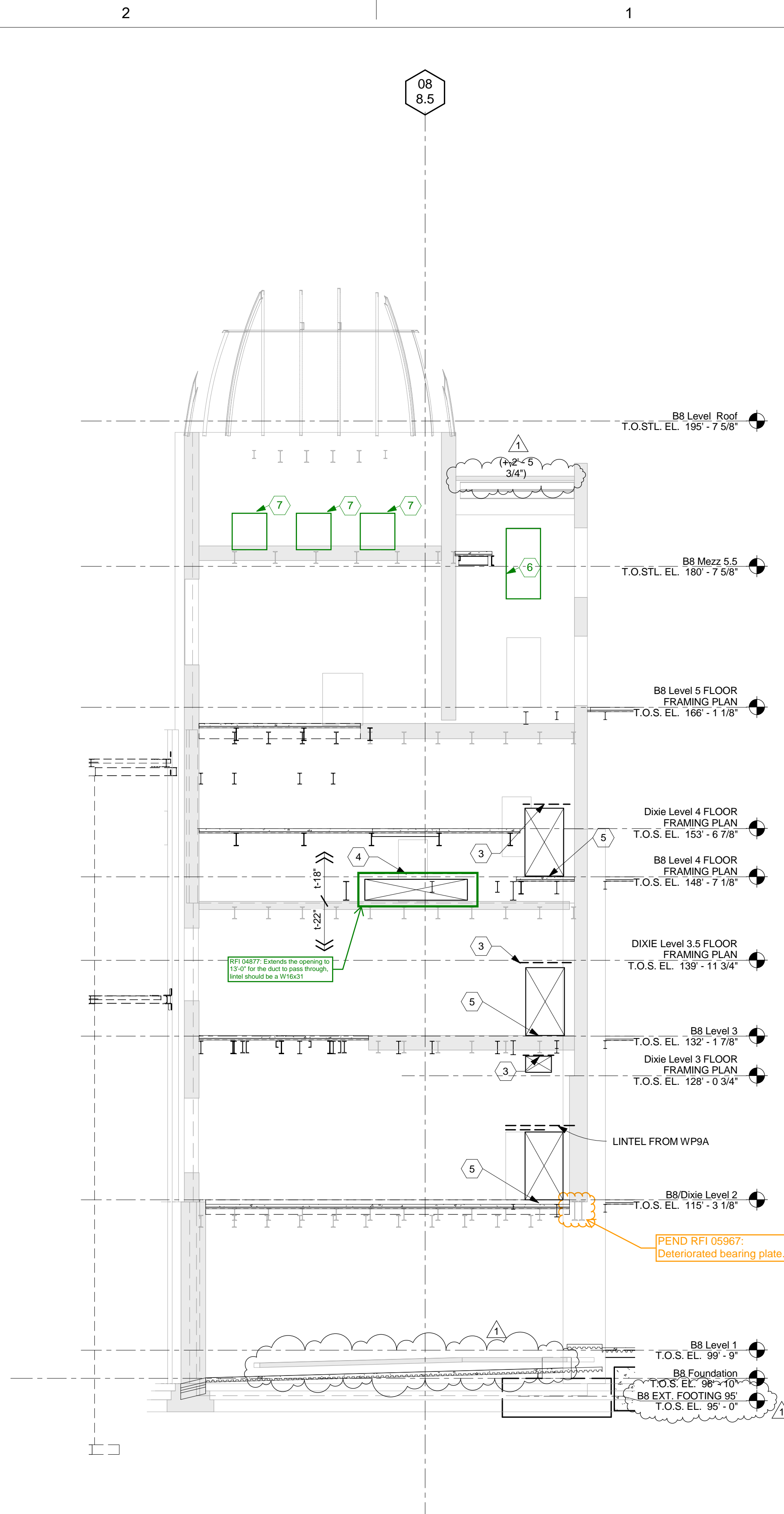


ARCHITECT/ENGINEERS:
studio **NOVA**
SCHRENK & PETERSON CONSULTING ENGINEERS / CIVIL
KORDA/NEMETH ENGINEERING / STRUCTURAL
BR+A CONSULTING ENGINEERS / MECH, ELECT, PLUMBING, LOW VOLTAGE
ARCHITECTURAL ENGINEERING / PLUMBING
SCALES ASSOCIATES / FIRE PROTECTION
COMMUNICATIONS DESIGN GROUP / LOW VOLTAGE

DRAWING TITLE WALL ELEVATIONS	PROJECT TITLE SLVHCS REPLACEMENT MEDICAL CENTER PROJECT	PROJECT NUMBER 629-HS2-401	BUILDING NUMBER 8
APPROVED: PROJECT DIRECTOR <i>John J. Anderson</i>	LOCATION NEW ORLEANS, LOUISIANA	DOCUMENT SET PACKAGE WP_09B	DRAWING NUMBER 8SF203
DATE July 16, 2012	CHECKED TMD	DRAWN RJC	OFFICE OF CONSTRUCTION AND FACILITIES MAINTENANCE Department of Veterans Affairs



2 EAST CARRIAGEWAY ELEVATION
1/8" = 1'-0"



3 WEST CARRIAGEWAY ELEVATION
1/8" = 1'-0"

CONSTRUCTION DOCUMENTS 1
FULLY SPRINKLERED