

ONE INCH = FORTY FEET (1" = 40')

THREE INCHES = ONE FOOT

ONE AND ONE HALF INCHES = ONE FOOT

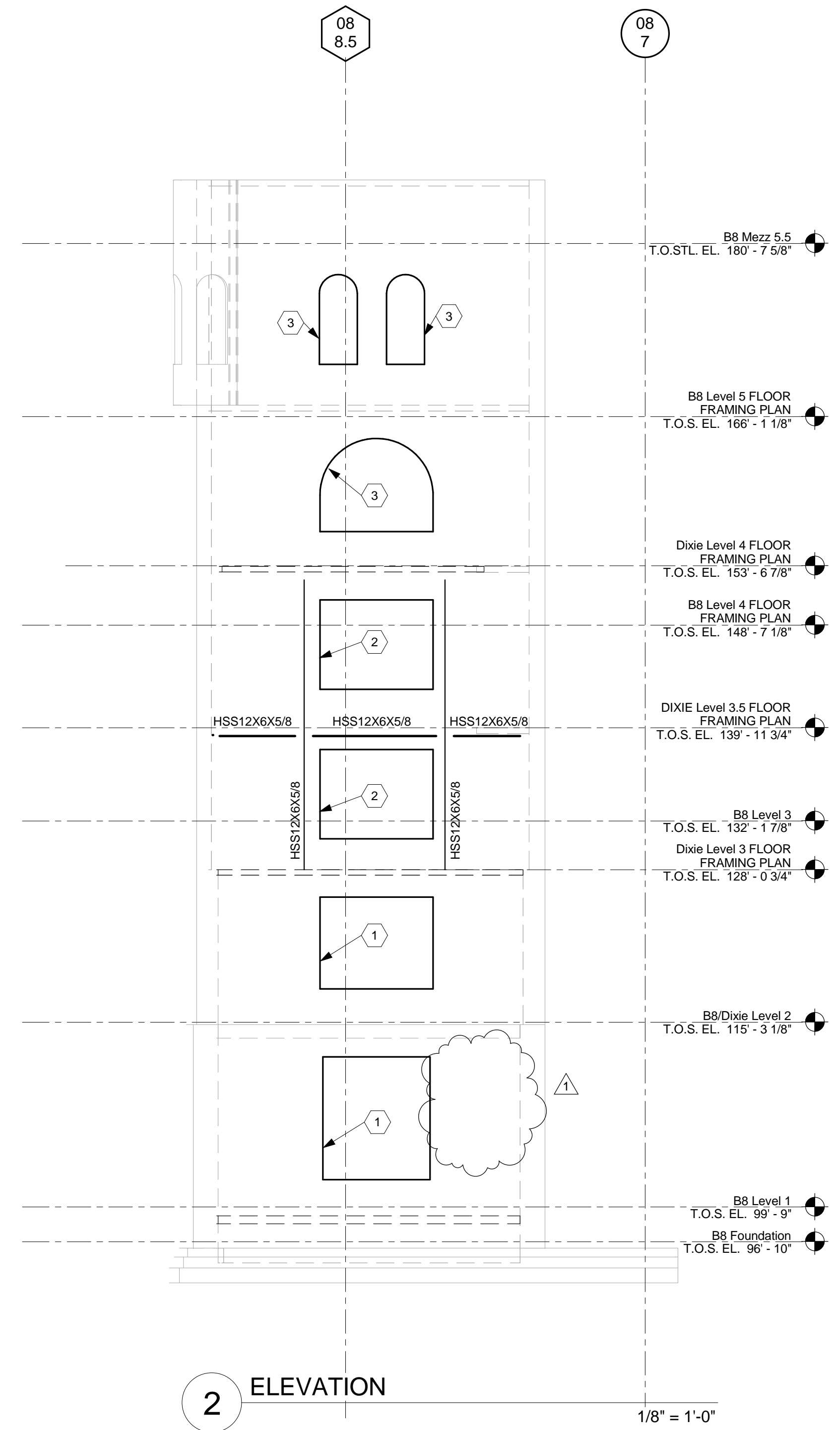
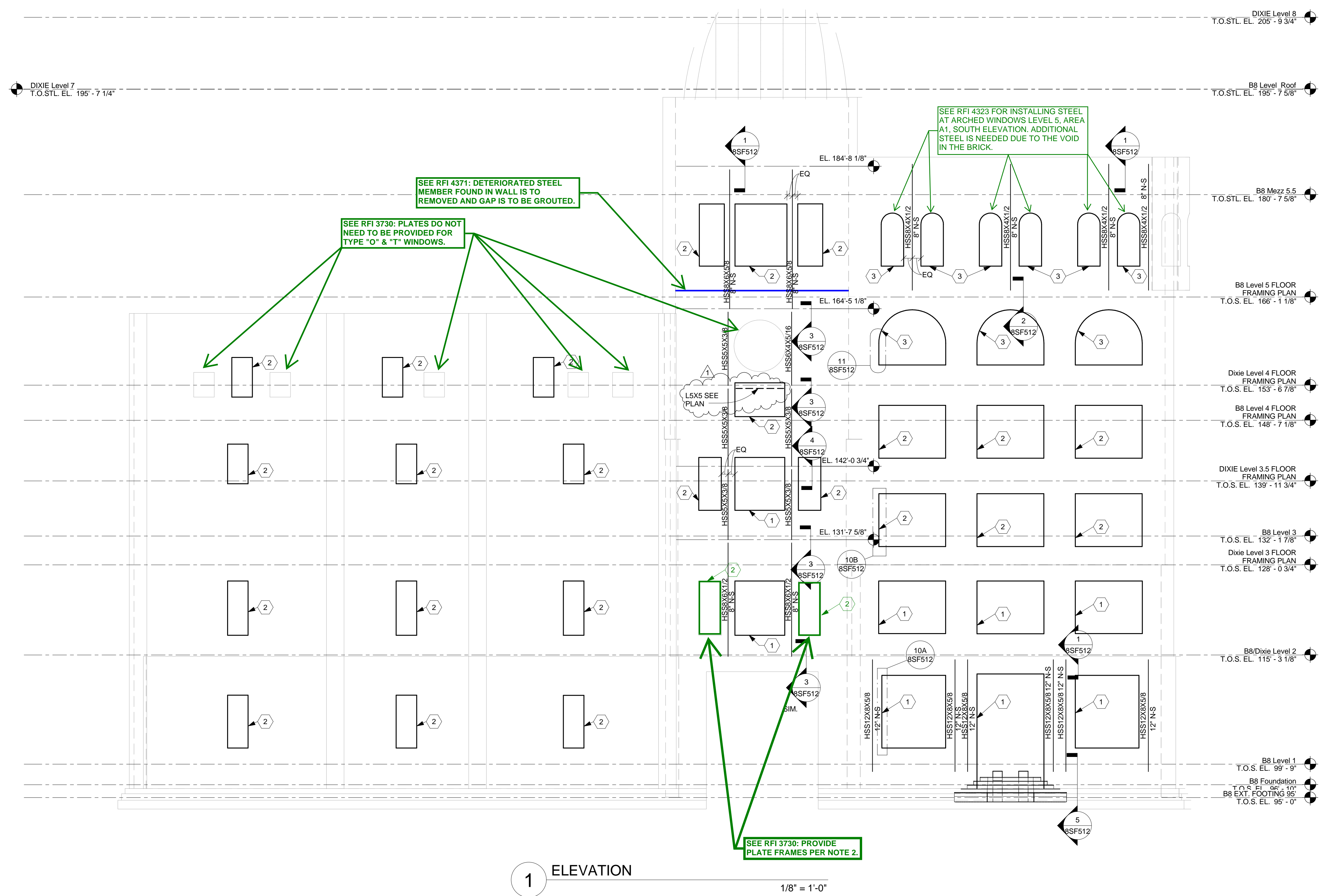
THREE QUARTERS INCH = ONE FOOT

ONE HALF INCH = ONE FOOT

ONE QUARTER INCH = ONE FOOT

ONE EIGHT INCH = ONE FOOT

ONE SIXTEENTH INCH = ONE FOOT



- 1) 3/8X10 PLATE FRAME W/ 3/4"Ø ADHESIVE ANCHORS @ 8" O.C. PER 10A/8SF512
- 2) 3/8X7 1/2 PLATE FRAME W/ 3/4"Ø ADHESIVE ANCHORS @ 12" O.C. PER 10B/8SF512
- 3) 3/8X7 1/2 PLATE FRAME W/ 3/4"Ø ADHESIVE ANCHORS @ 12" O.C. PER 11/8SF512

1 ADDENDUM #1		09/21/12
REVISIONS:		DATE

CONSULTANTS:
DESMAN ASSOCIATES / PARKING
CODE CONSULTANTS, INC. / CODE CONSULTANT
THE SEXTANT GROUP / AV & ACOUSTICAL
HAMMER DESIGN ASSOCIATES / FOOD SERVICE
PYBURN & ODOM / ABATEMENT
TATA & HOWARD / TANK CONSULTANT
I.S.C. GROUP, INC. / IRRIGATION
DAN EUSER WATER ARCHITECTURE, INC. / WATER FEATURE

ARCHITECT/ENGINEERS:
studio **NOVA**
SCHRENK & PETERSON CONSULTING ENGINEERS / CIVIL
KORDA/NEMETH ENGINEERING / STRUCTURAL
BR+A CONSULTING ENGINEERS / MECH, ELECT, PLUMBING, LOW VOLTAGE
ARCHITECTURAL ENGINEERING / PLUMBING
SCALES ASSOCIATES / FIRE PROTECTION
COMMUNICATIONS DESIGN GROUP / LOW VOLTAGE

DRAWING TITLE WALL ELEVATION		PROJECT TITLE SLV/HCS REPLACEMENT MEDICAL CENTER PROJECT		PROJECT NUMBER 629-HS2-401	BUILDING NUMBER 8
APPROVED: PROJECT DIRECTOR 		LOCATION NEW ORLEANS, LOUISIANA		DOCUMENT SET PACKAGE WP_09B	
DATE July 16, 2012		CHECKED TMD	DRAWN RJC	DRAWING NUMBER 8SF204	

OFFICE OF CONSTRUCTION AND FACILITIES MAINTENANCE