

ONE INCH = FORTY FEET (1" = 40')

ONE AND ONE HALF INCHES = ONE FOOT

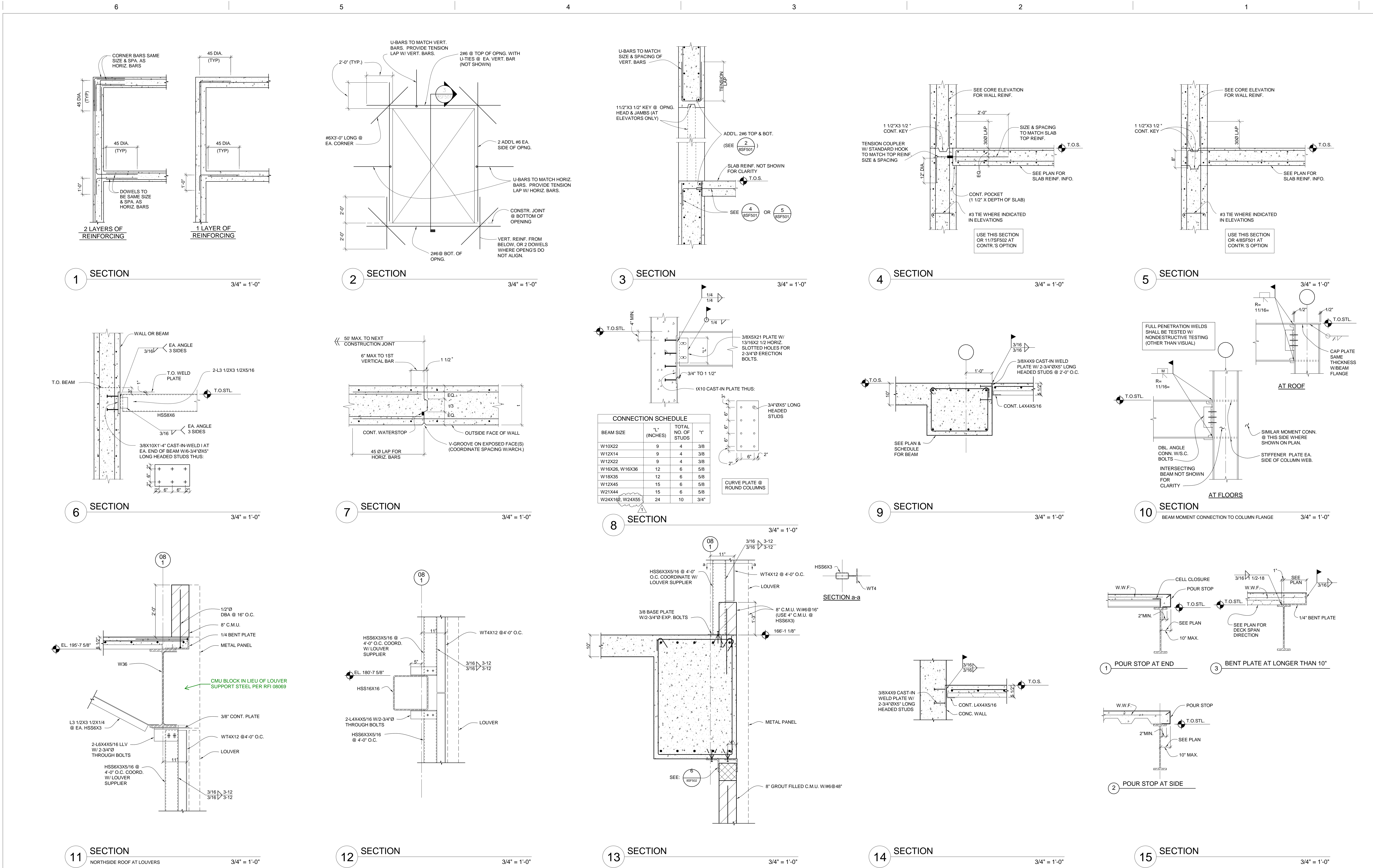
THREE QUARTERS INCH = ONE FOOT

ONE HALF INCH = ONE FOOT

ONE QUARTER INCH = ONE FOOT

ONE EIGHT INCH = ONE FOOT

ONE SIXTEENTH INCH = ONE FOOT



1 ADDENDUM #1		09/21/12
REVISIONS:		DATE
CONSULTANTS:		DESIGN TITLE
ARCHITECT/ENGINEERS:		PROJECT TITLE
DRAWING TITLE		PROJECT NUMBER
APPROVED: PROJECT DIRECTOR		BUILDING NUMBER
DATE		DOCUMENT SET PACKAGE
CHECKED		WP_09B
DRAWN		DRAWING NUMBER
TMD		8SF501
RJC		
OFFICE OF CONSTRUCTION AND FACILITIES MAINTENANCE		
Department of Veterans Affairs		