

ONE INCH = FORTY FEET (1" = 40')

THREE INCHES = ONE FOOT

ONE AND ONE HALF INCHES = ONE FOOT

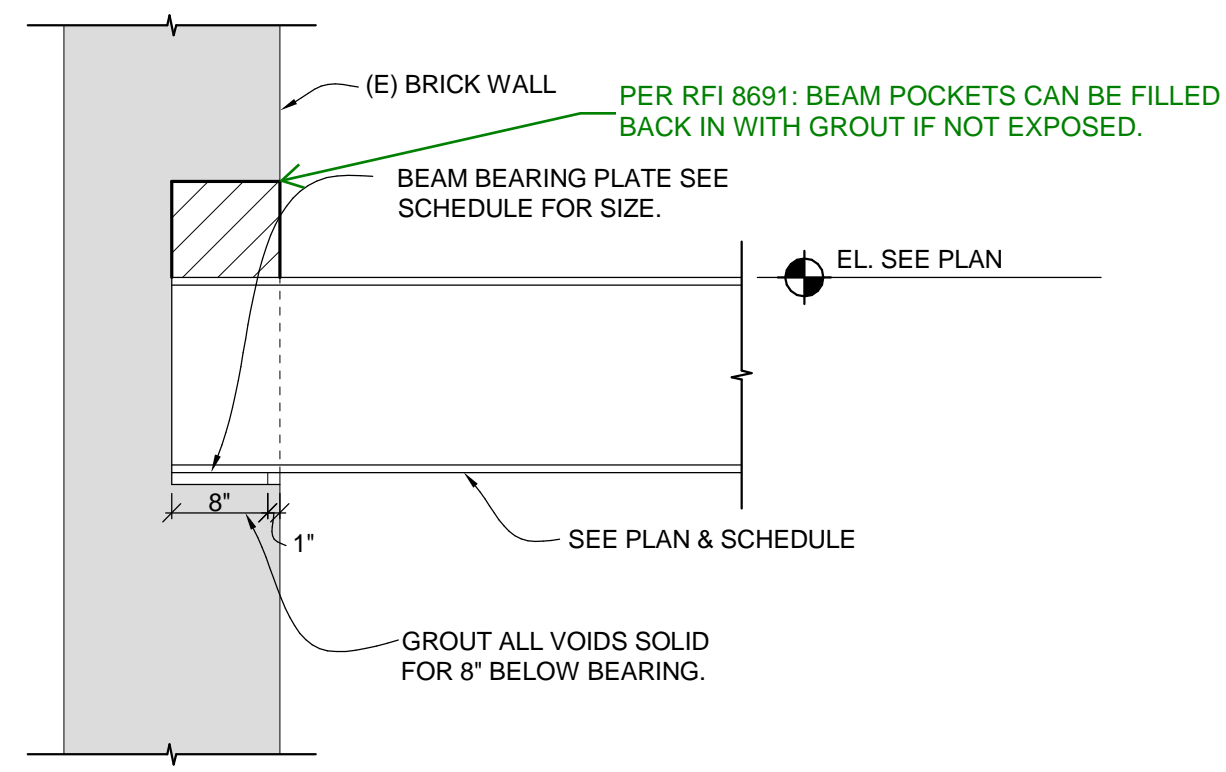
THREE QUARTERS INCH = ONE FOOT

ONE HALF INCH = ONE FOOT

ONE QUARTER INCH = ONE FOOT

ONE EIGHT INCH = ONE FOOT

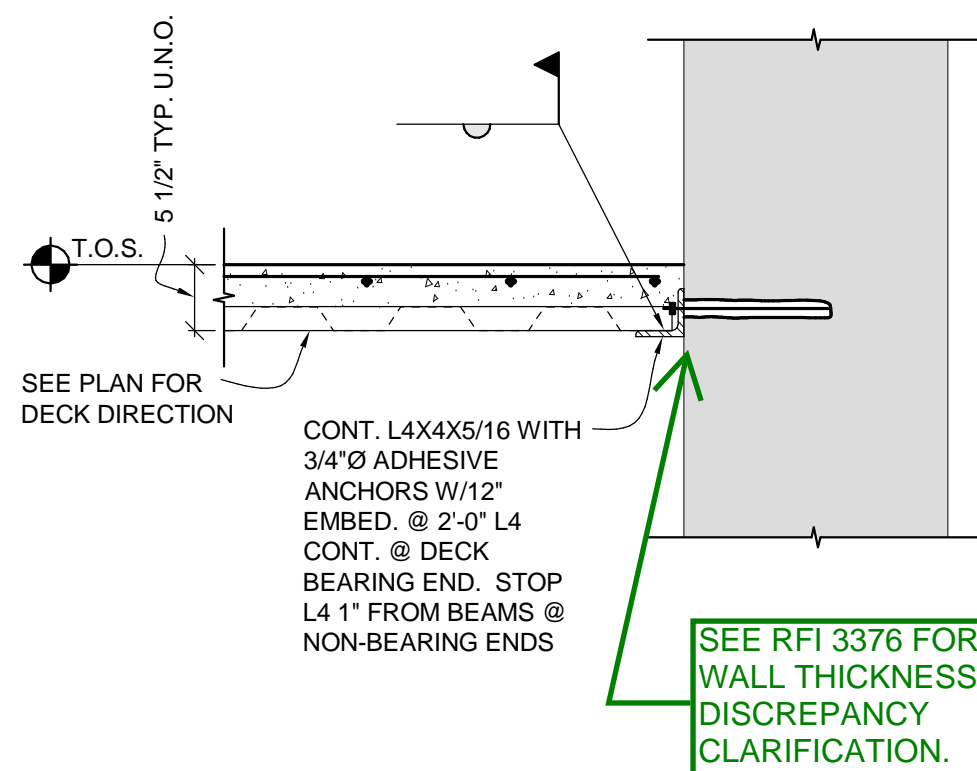
ONE SIXTEENTH INCH = ONE FOOT



BEAM SIZE	BEARING PLATE SIZE
W10X12	7/8X8X14
W12X14	7/8X8X14
W12X16	7/8X8X15
W14X22	1 1/4X8X20
W16X26	1 1/4X8X20
W24X35	1 1/4X8X20
HSS16X12X5/8	5/8X8X20

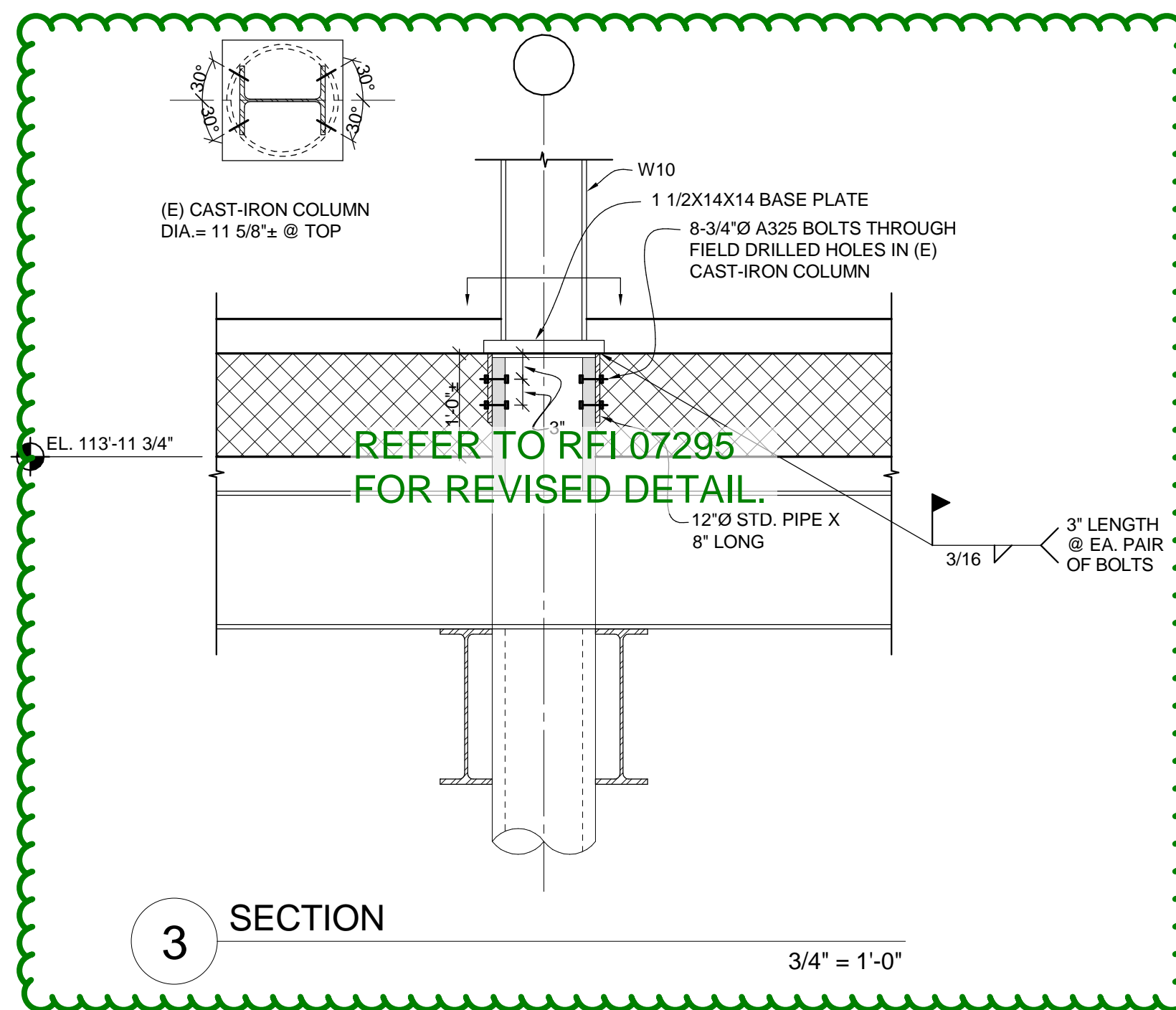
1 SECTION

3/4" = 1'-0"



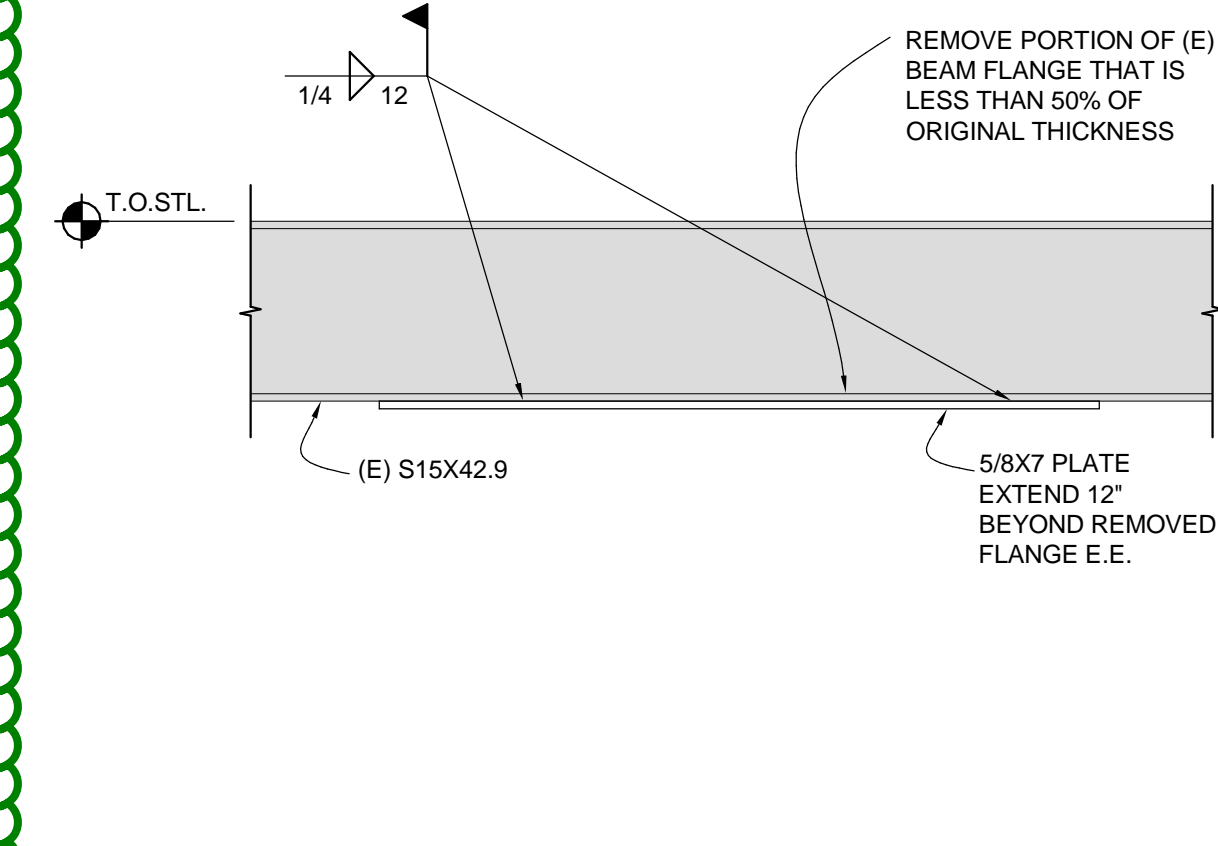
2 SECTION

3/4" = 1'-0"



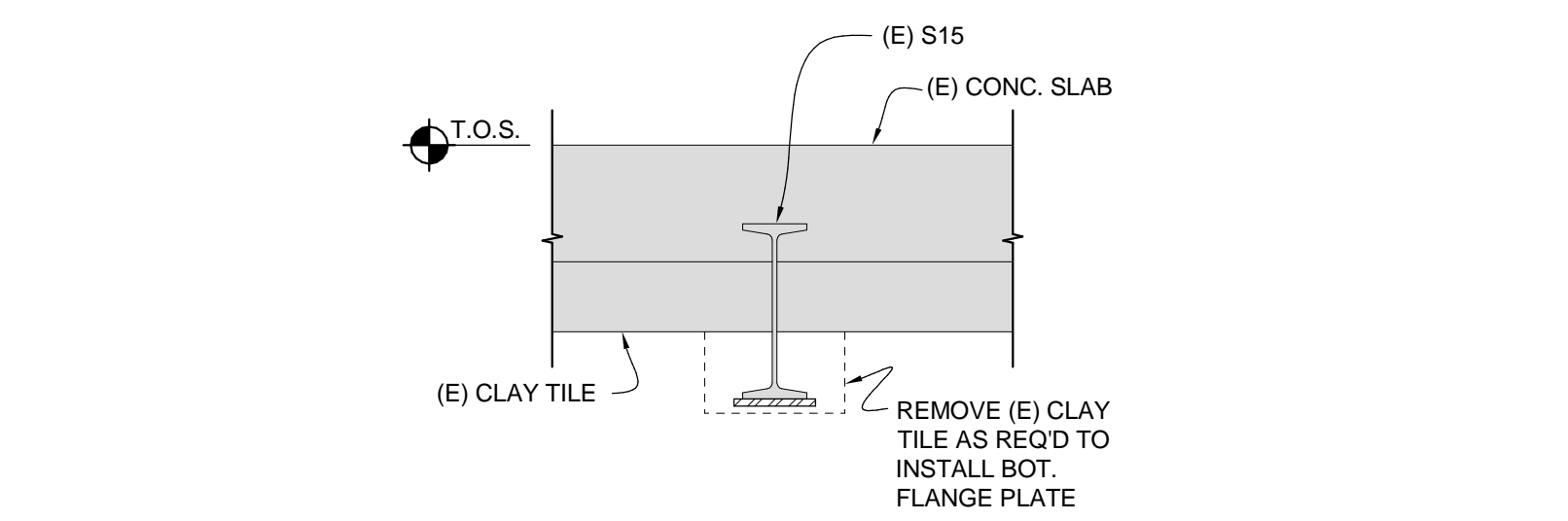
3 SECTION

3/4" = 1'-0"



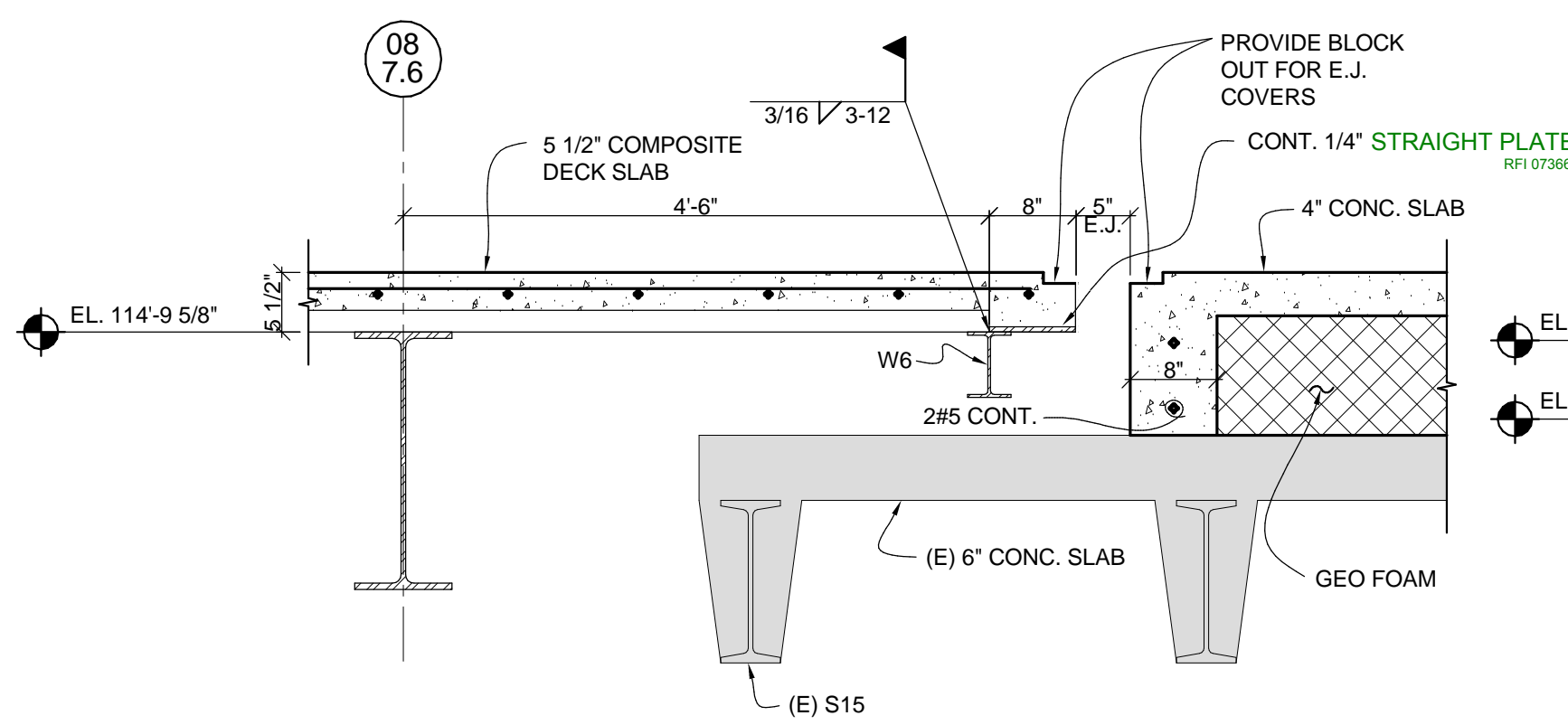
4 SECTION

3/4" = 1'-0"



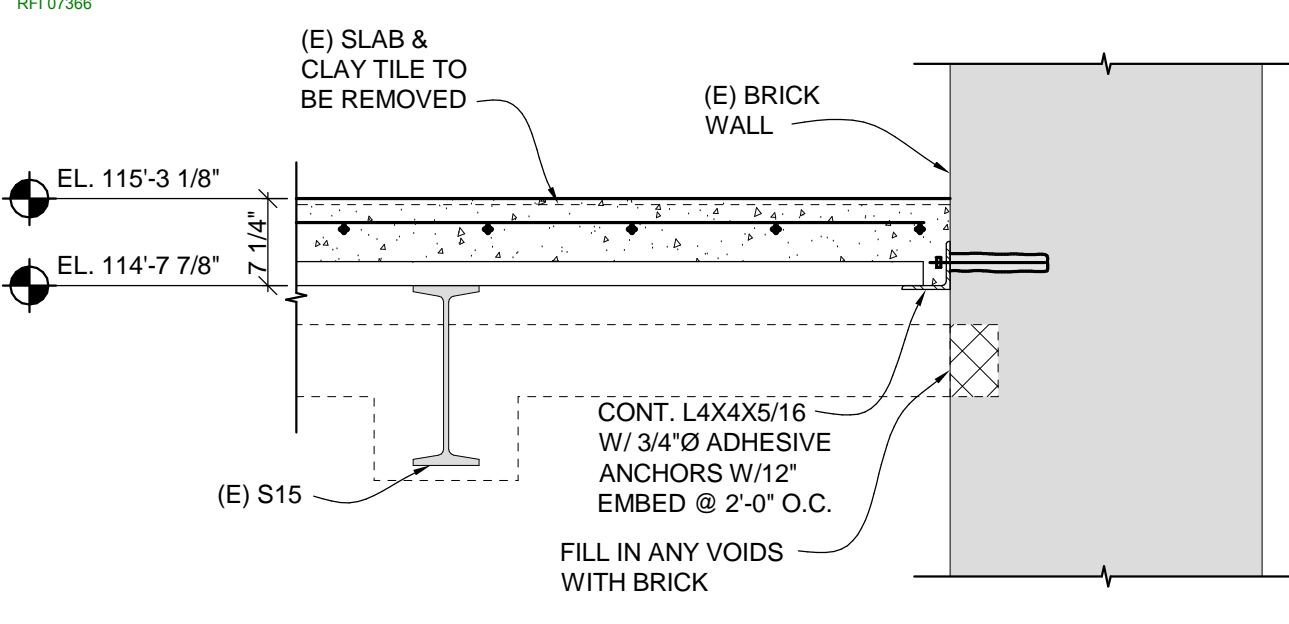
5 SECTION

3/4" = 1'-0"



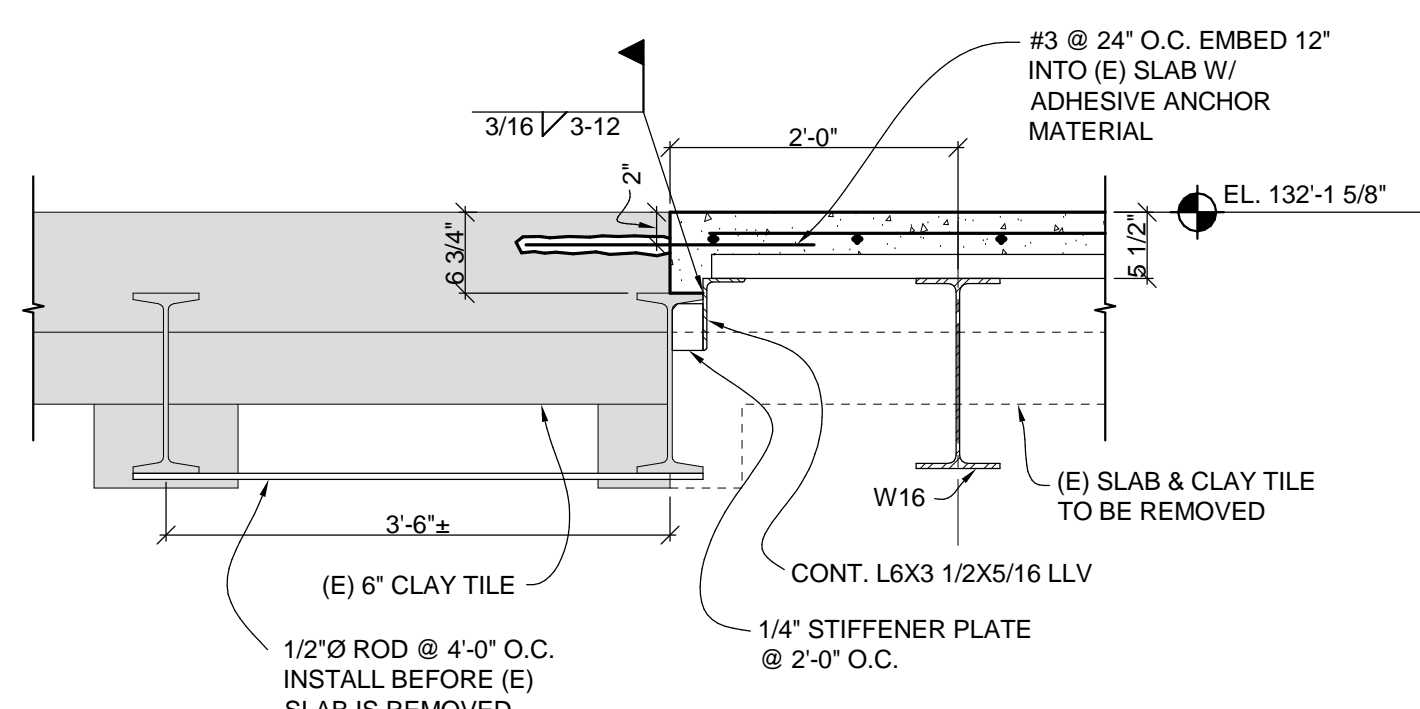
6 SECTION

3/4" = 1'-0"



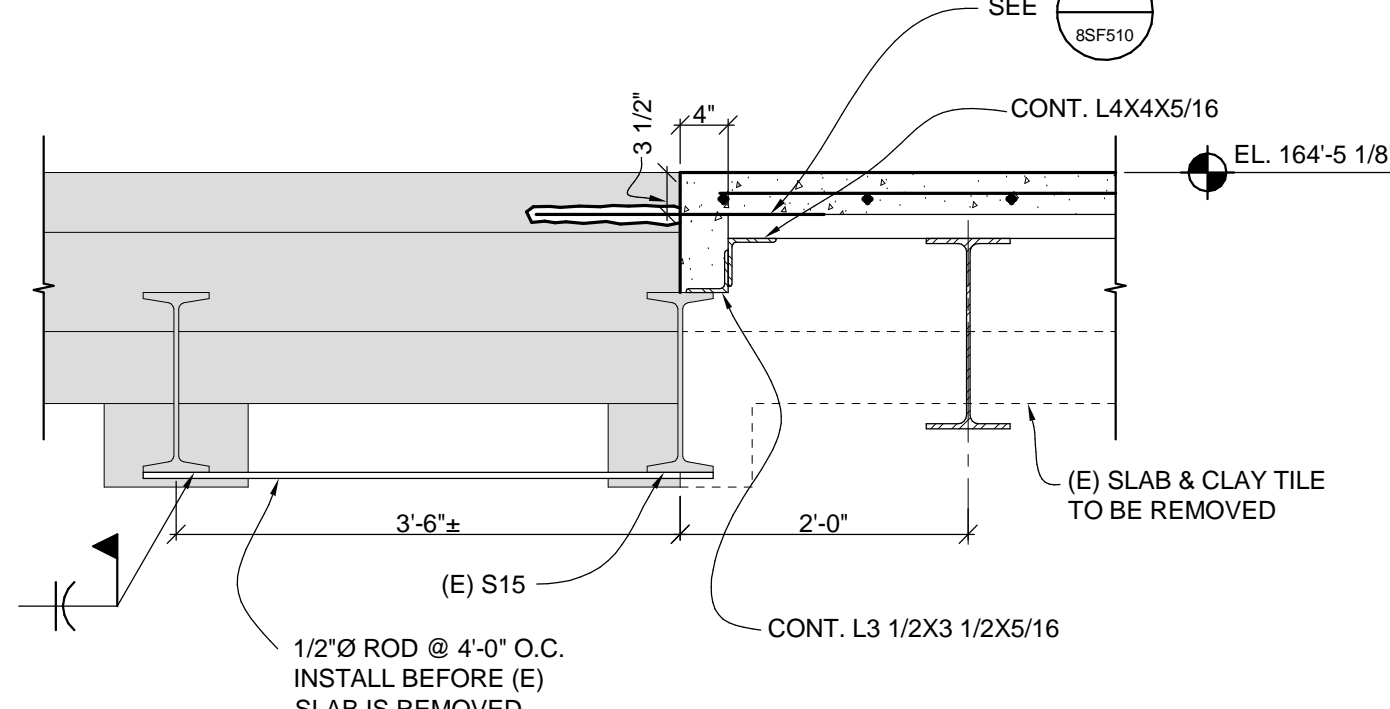
7 SECTION

3/4" = 1'-0"



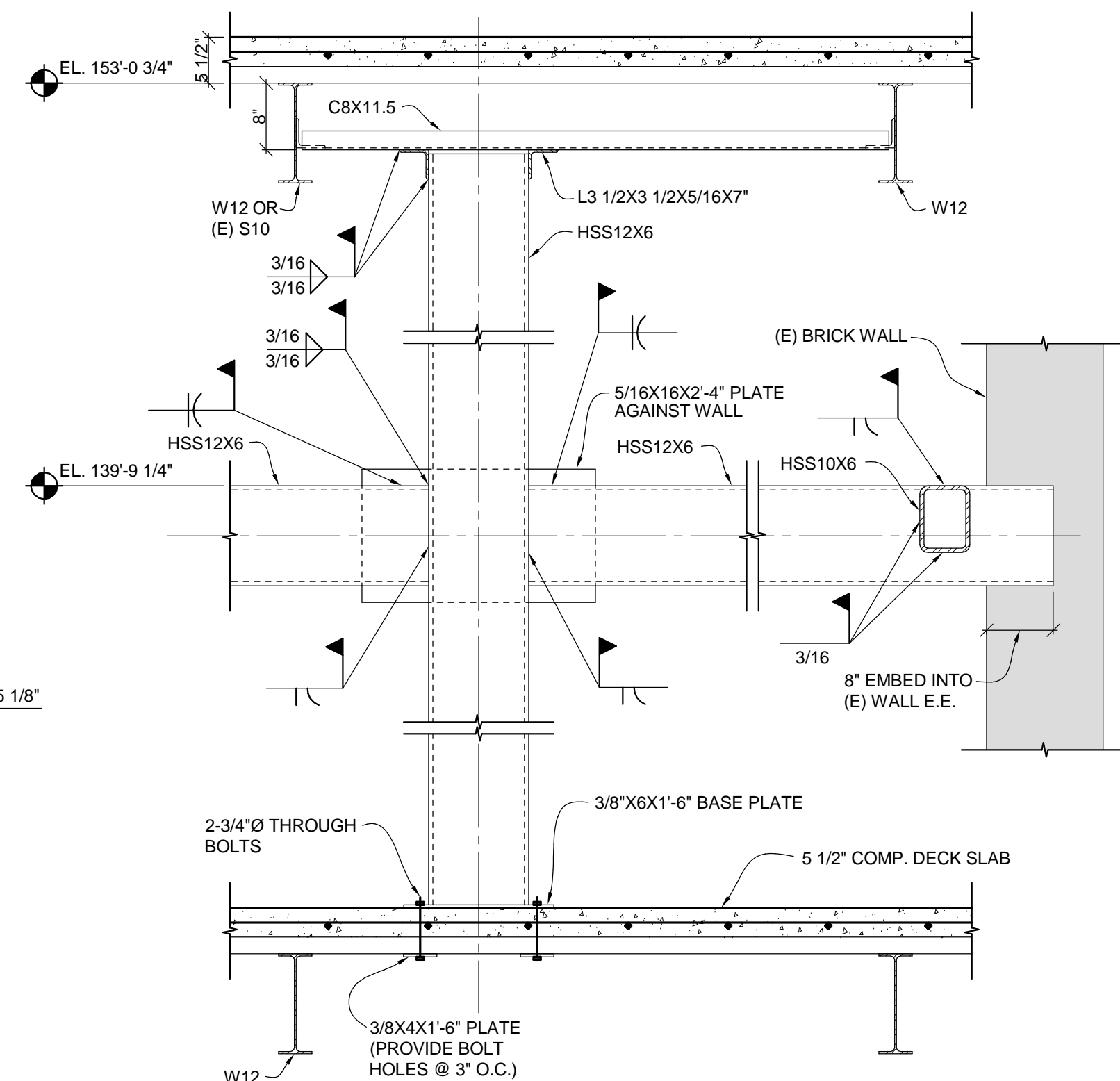
8 SECTION

3/4" = 1'-0"



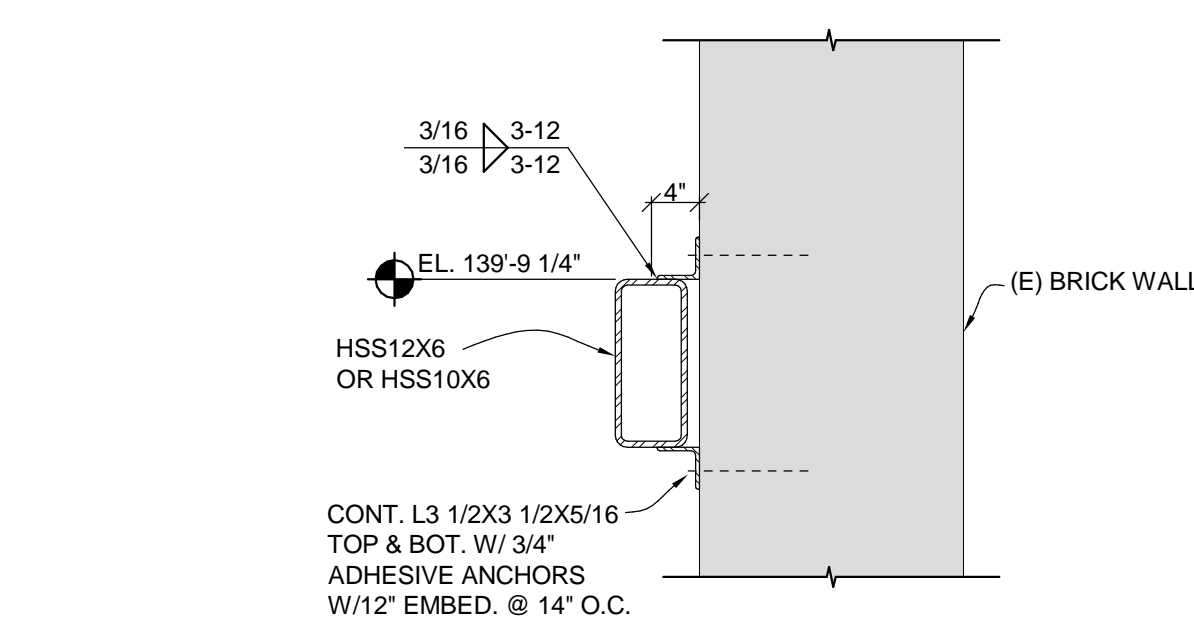
9 SECTION

3/4" = 1'-0"



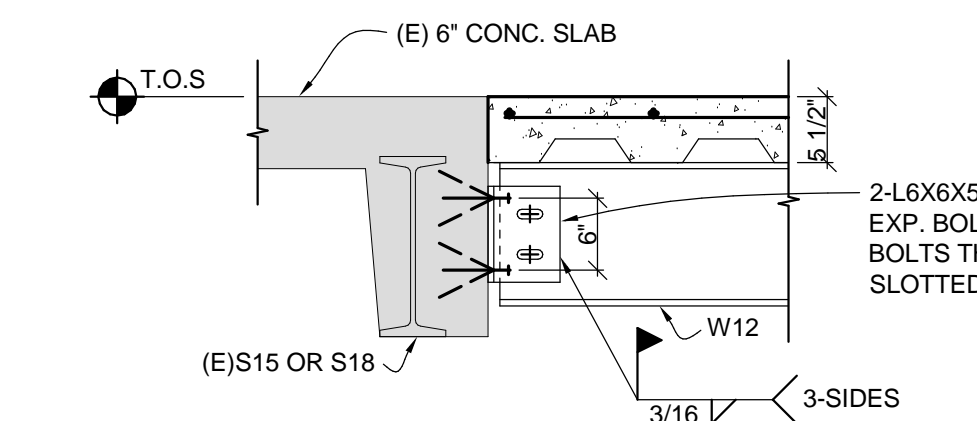
10 SECTION

3/4" = 1'-0"



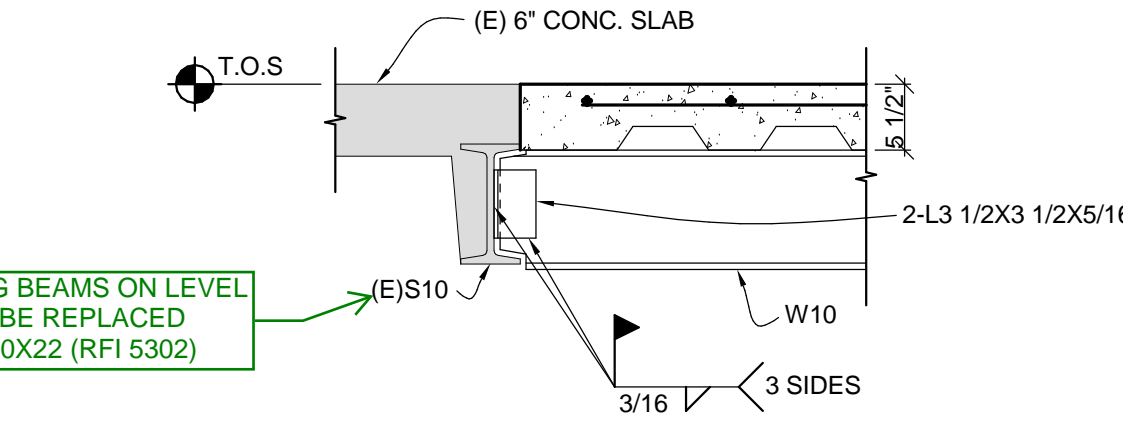
11 SECTION

3/4" = 1'-0"



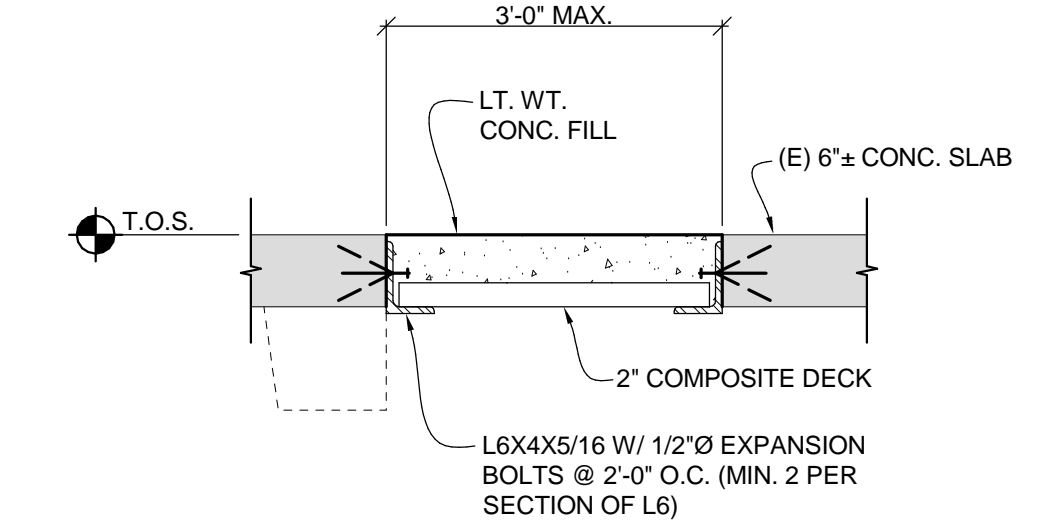
12 SECTION

3/4" = 1'-0"



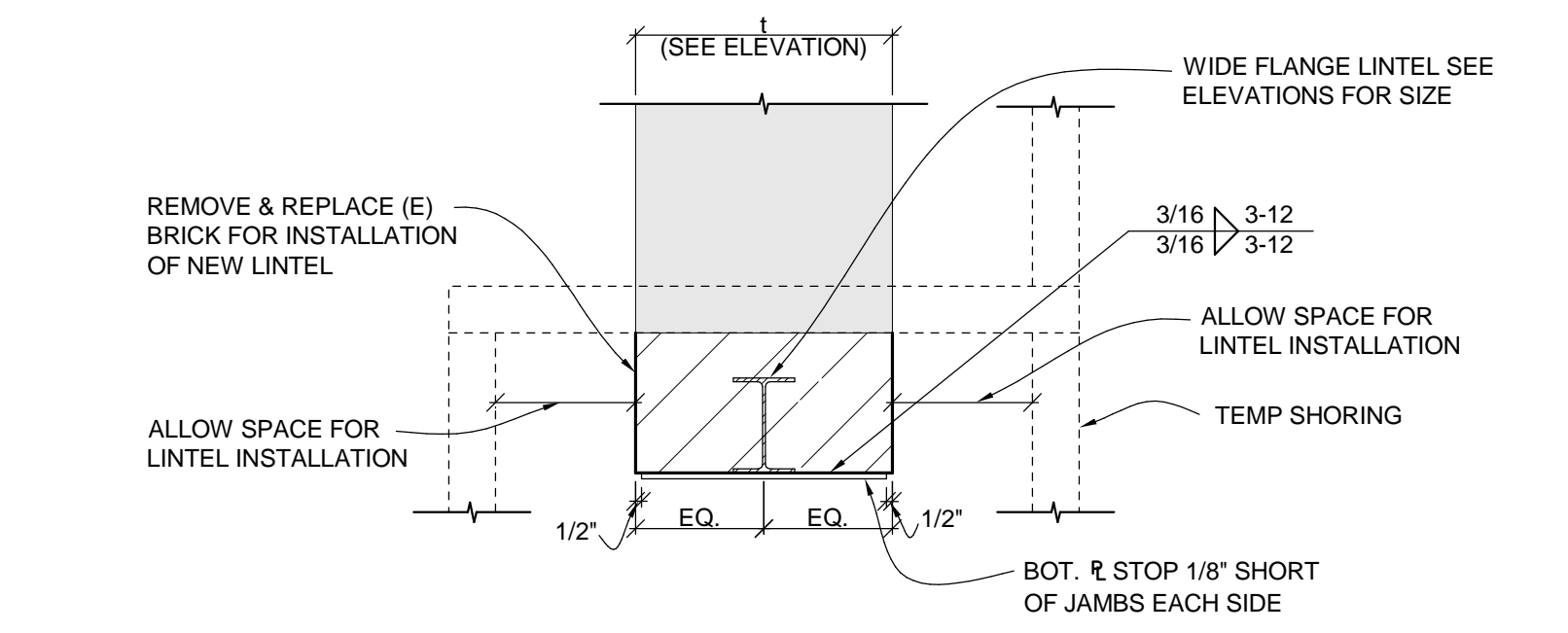
13 SECTION

3/4" = 1'-0"



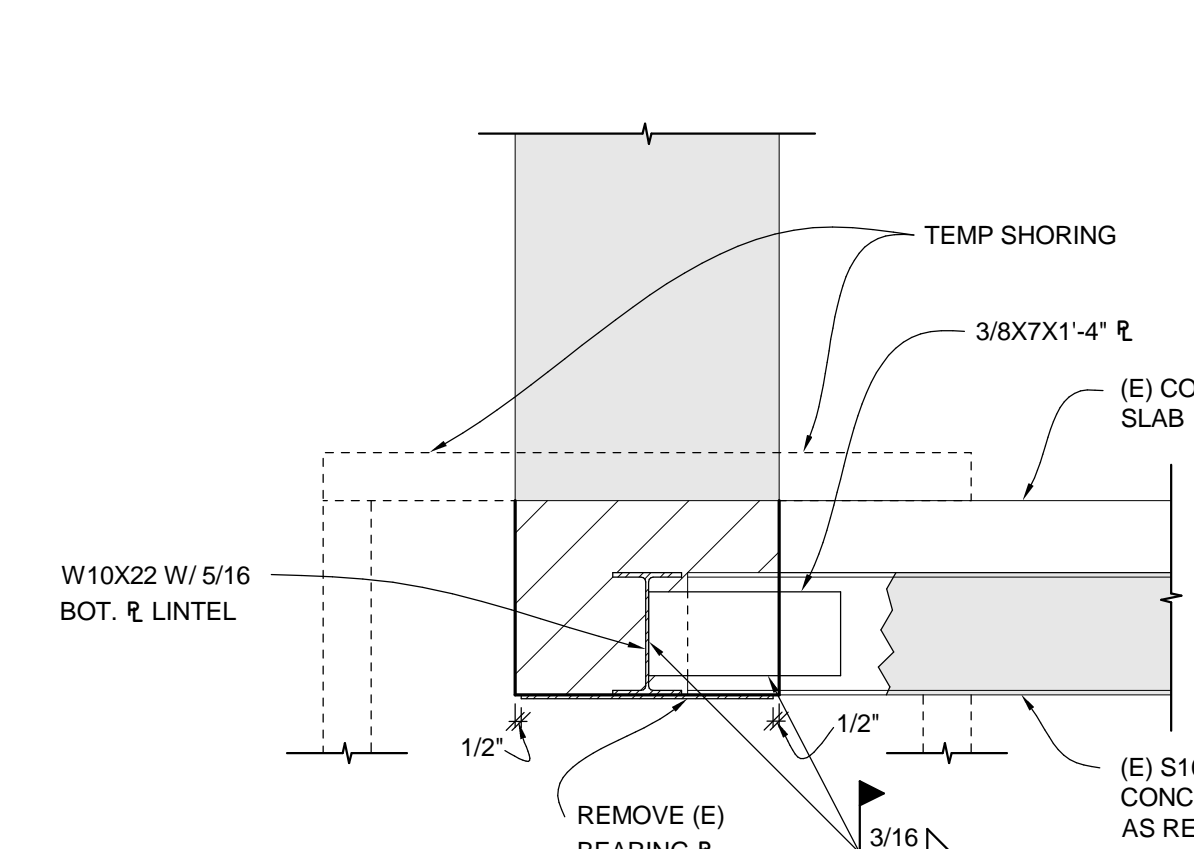
14 SECTION

3/4" = 1'-0"



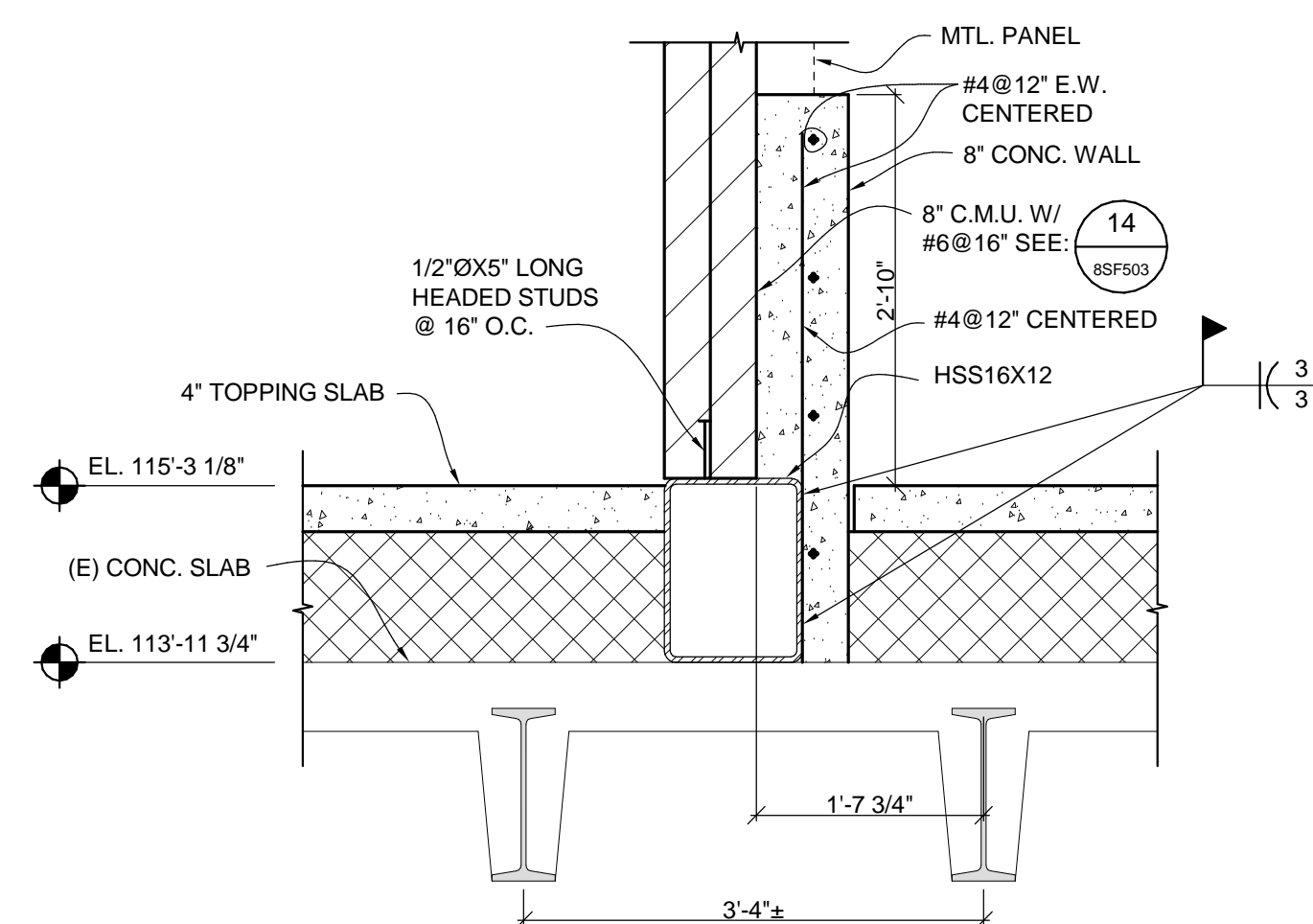
15 SECTION

3/4" = 1'-0"



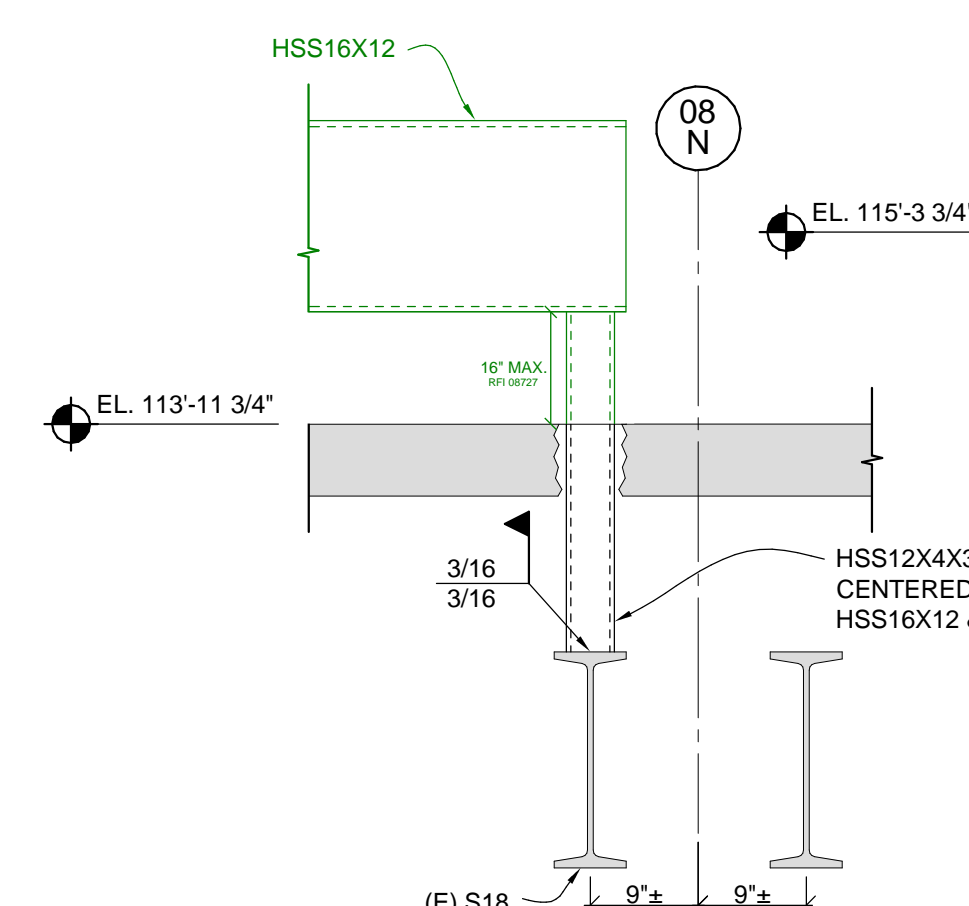
16 SECTION

3/4" = 1'-0"



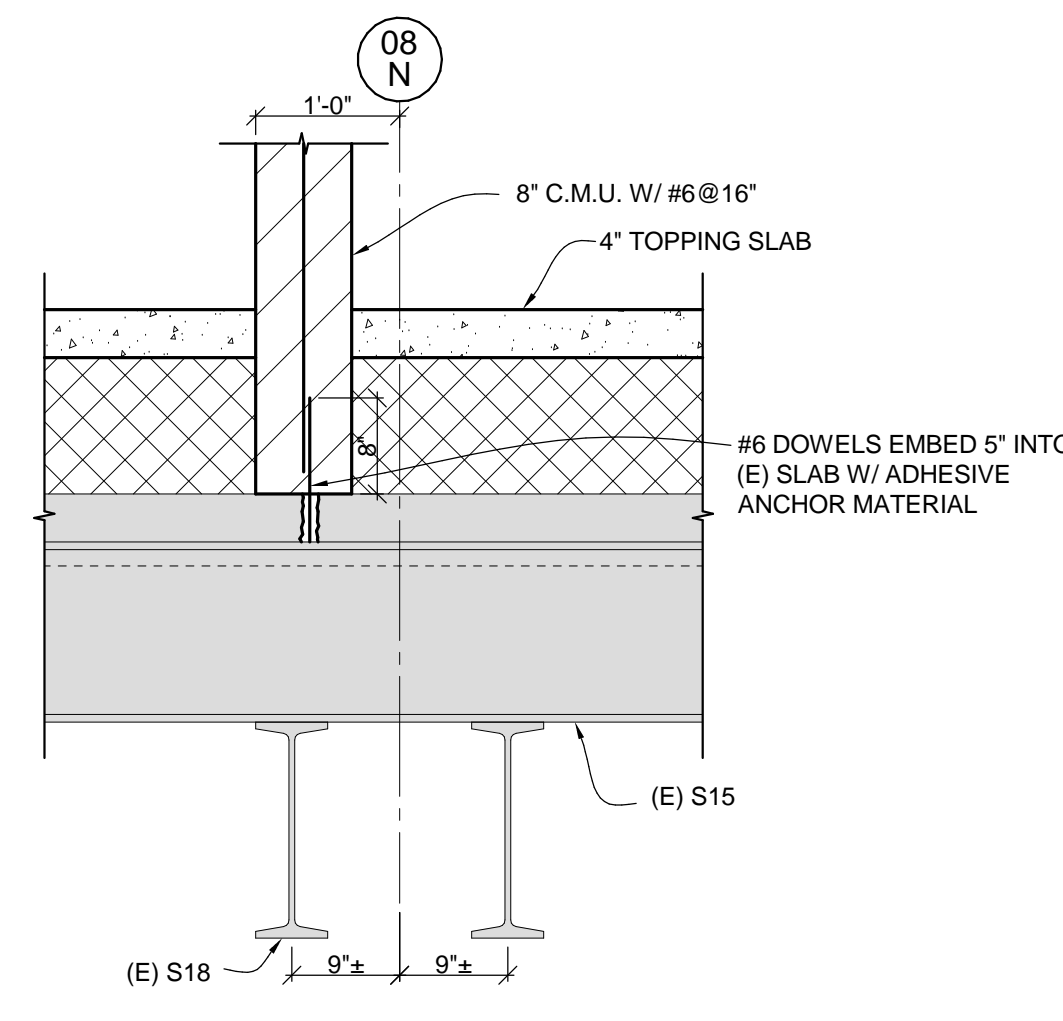
17 SECTION

3/4" = 1'-0"



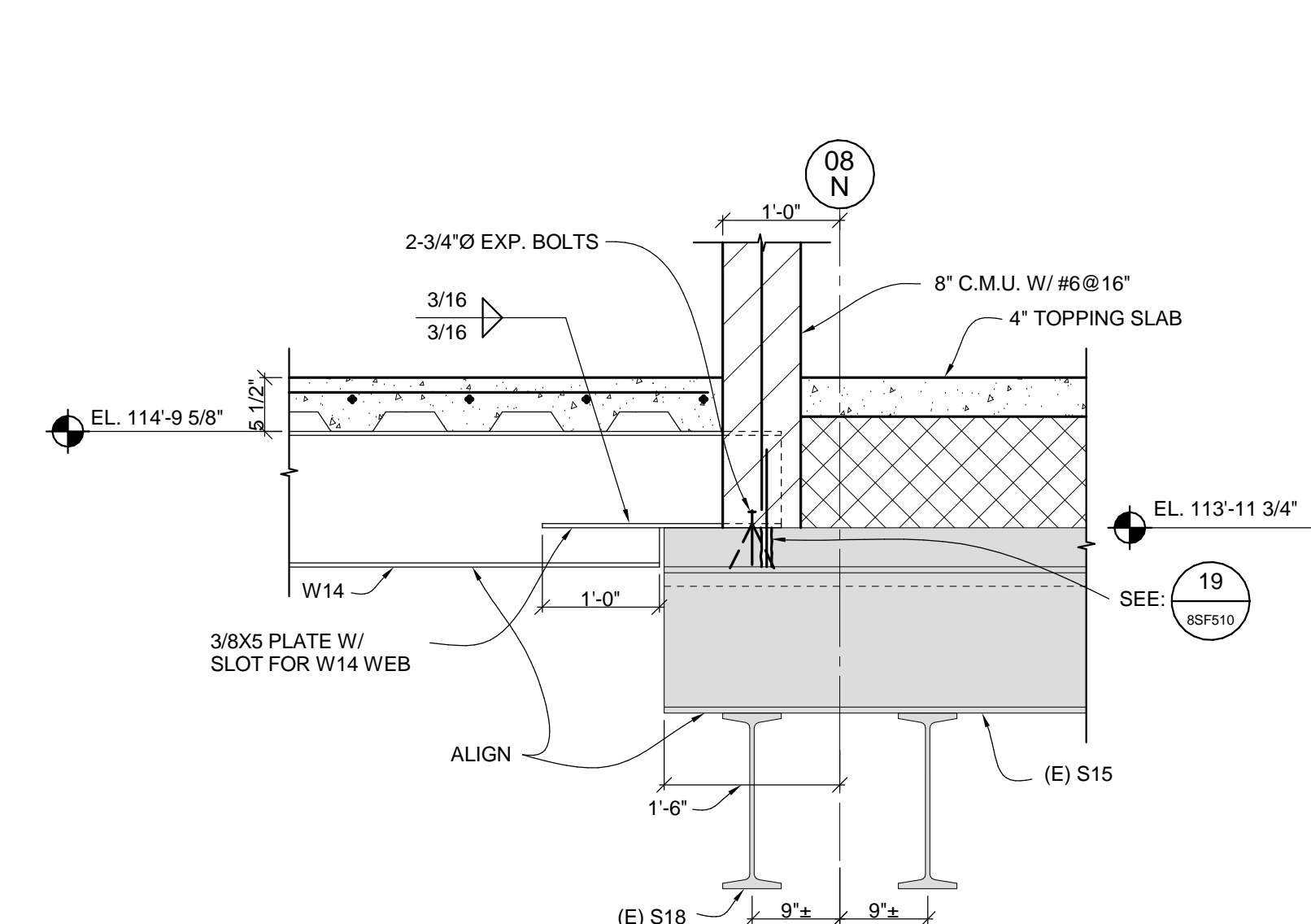
18 SECTION

3/4" = 1'-0"



19 SECTION

3/4" = 1'-0"



20 SECTION

3/4" = 1'-0"

## CONSULTANTS:

DESMAN ASSOCIATES / PARKING  
CODE CONSULTANTS, INC. / CODE CONSULTANT  
THE SEXTANT GROUP / AV & ACOUSTICAL  
HAMMER DESIGN ASSOCIATES / FOOD SERVICE  
PYBURN & ODOM / ABATEMENT  
TATA & HOWARD / TANK CONSULTANT  
I.S.C. GROUP, INC. / IRRIGATION  
DAN EUSER WATER ARCHITECTURE, INC. / WATER FEATURE



## ARCHITECT/ENGINEERS:

studio **NOVA**  
SCHRENK & PETERSON CONSULTING ENGINEERS / CIVIL  
KORDA/NEMETH ENGINEERING / STRUCTURAL  
BR+A CONSULTING ENGINEERS / MECH, ELECT, PLUMBING, LOW VOLTAGE  
ARCHITECTURAL ENGINEERING / PLUMBING  
SCALES ASSOCIATES / FIRE PROTECTION  
COMMUNICATIONS DESIGN GROUP / LOW VOLTAGE

DRAWING TITLE  
STRUCTURAL DETAILS

APPROVED: PROJECT DIRECTOR

PROJECT TITLE  
SLVHCS REPLACEMENT MEDICAL  
CENTER PROJECTLOCATION  
NEW ORLEANS, LOUISIANADATE  
July 16, 2012CHECKED  
TMDDRAWN  
RJCPROJECT NUMBER  
629-HS2-401DOCUMENT SET PACKAGE  
WP\_D9B

DRAWING NUMBER

8SF510

CONSTRUCTION DOCUMENTS 1  
FULLY SPRINKLEREDOFFICE OF  
CONSTRUCTION  
AND FACILITIES  
MAINTENANCE