

A

B

C

D

E

F

A

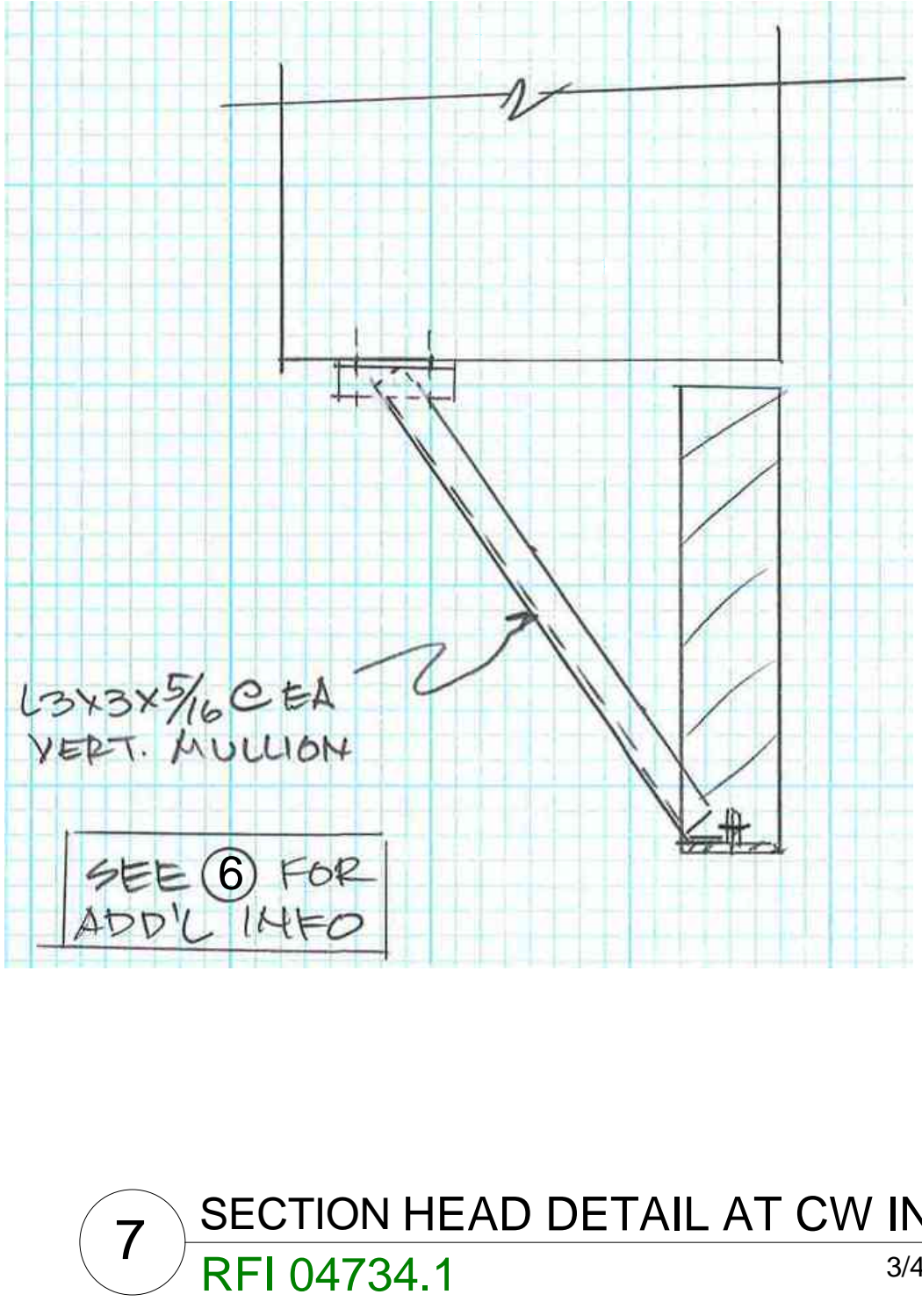
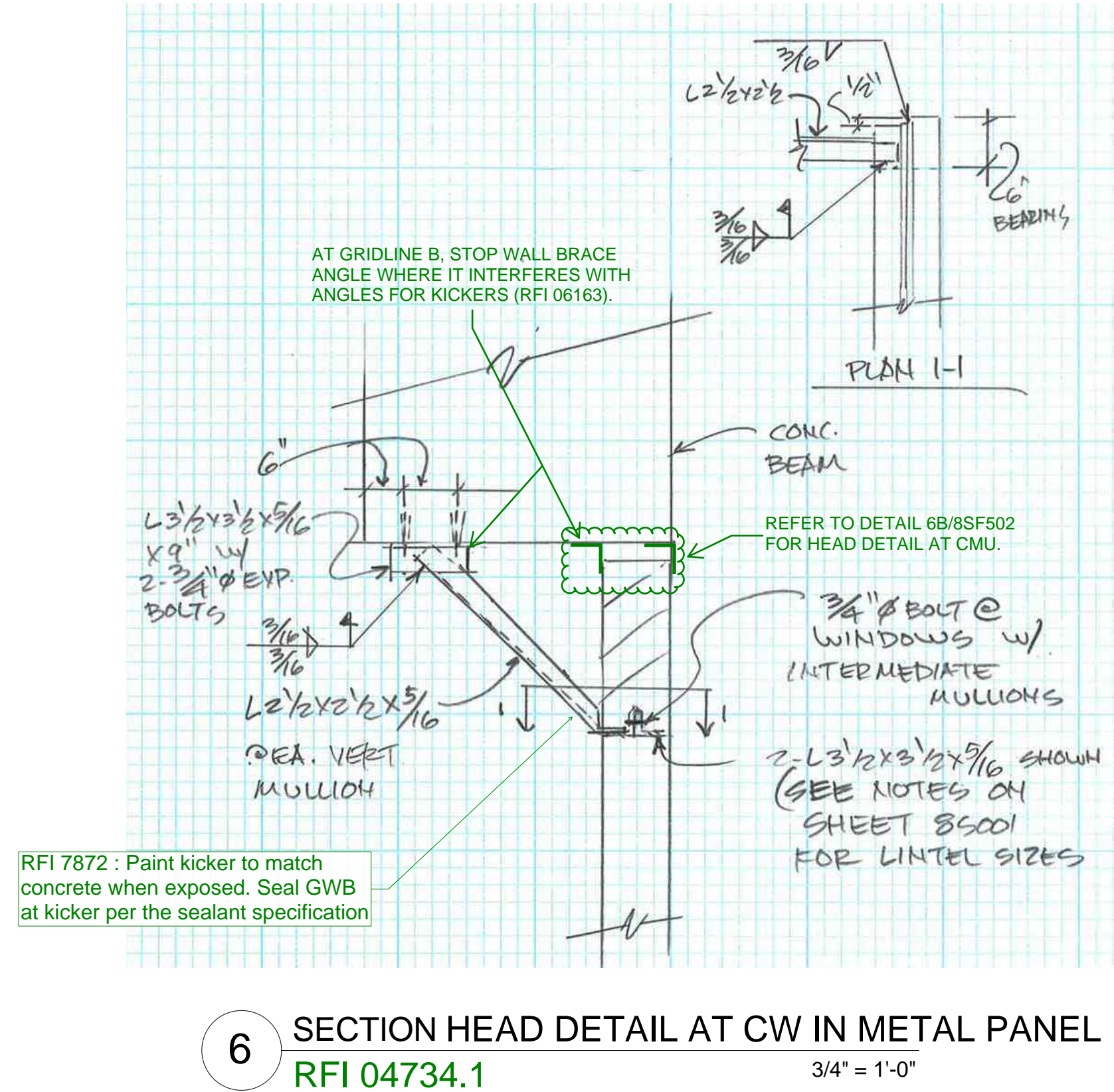
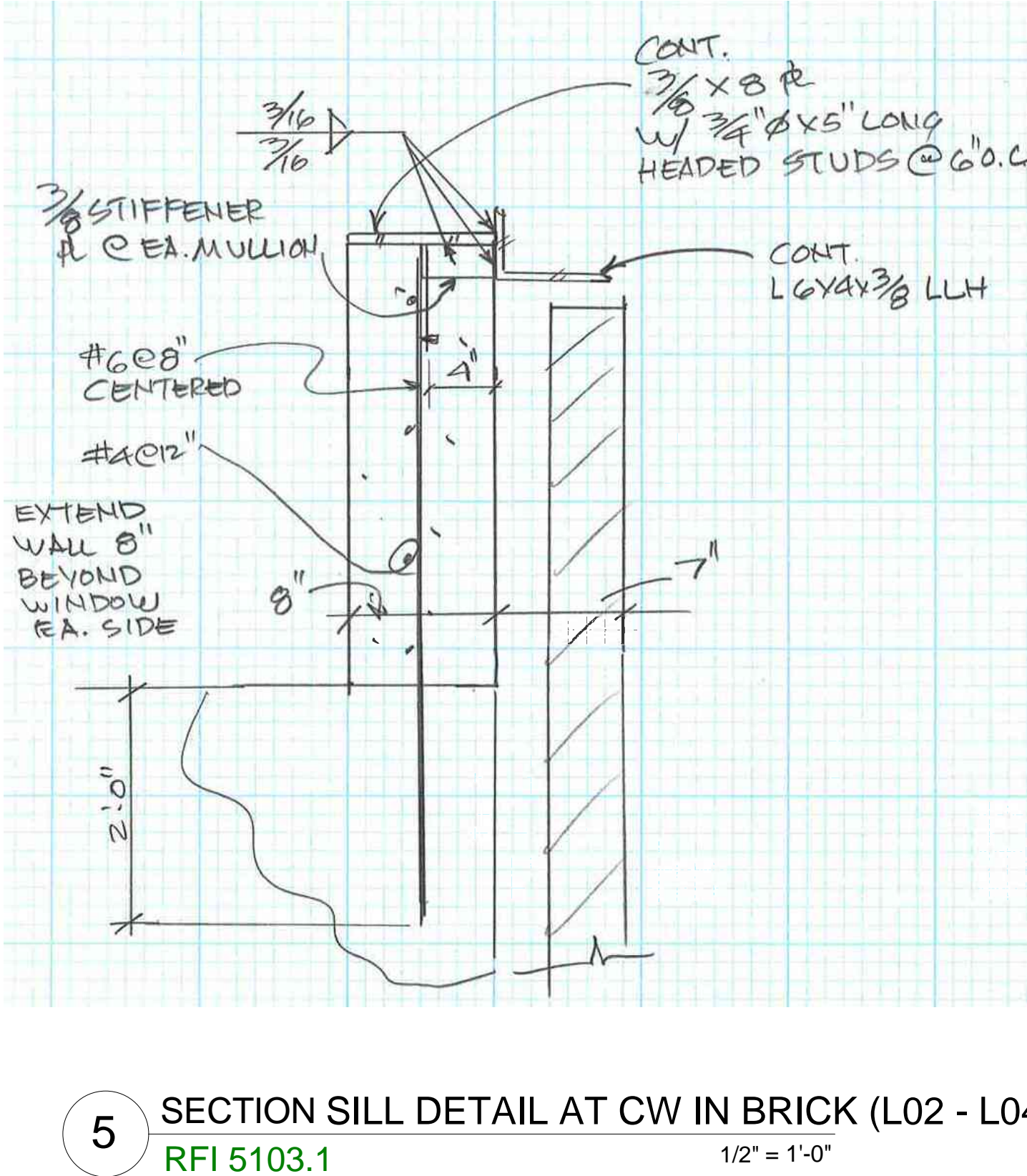
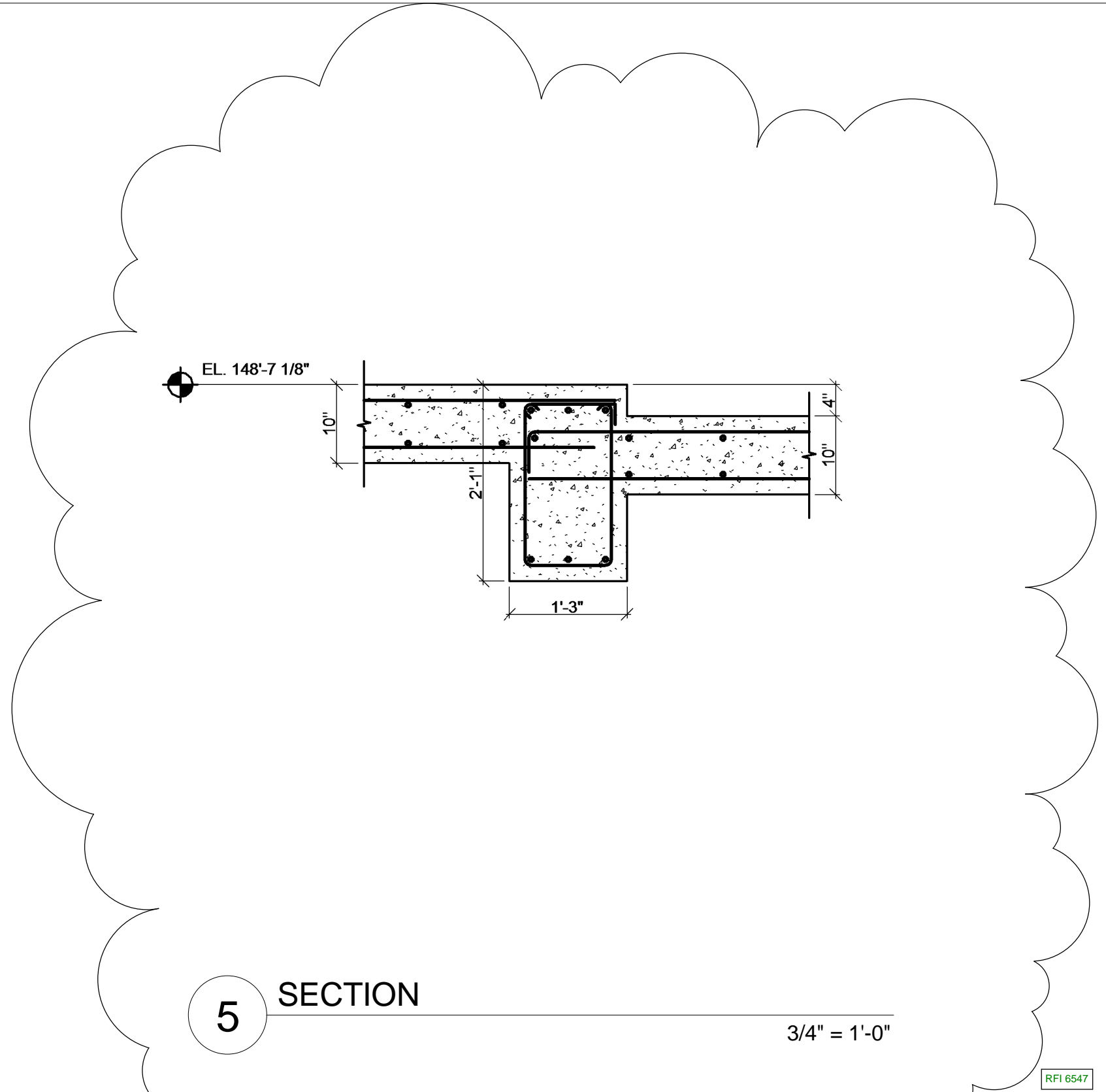
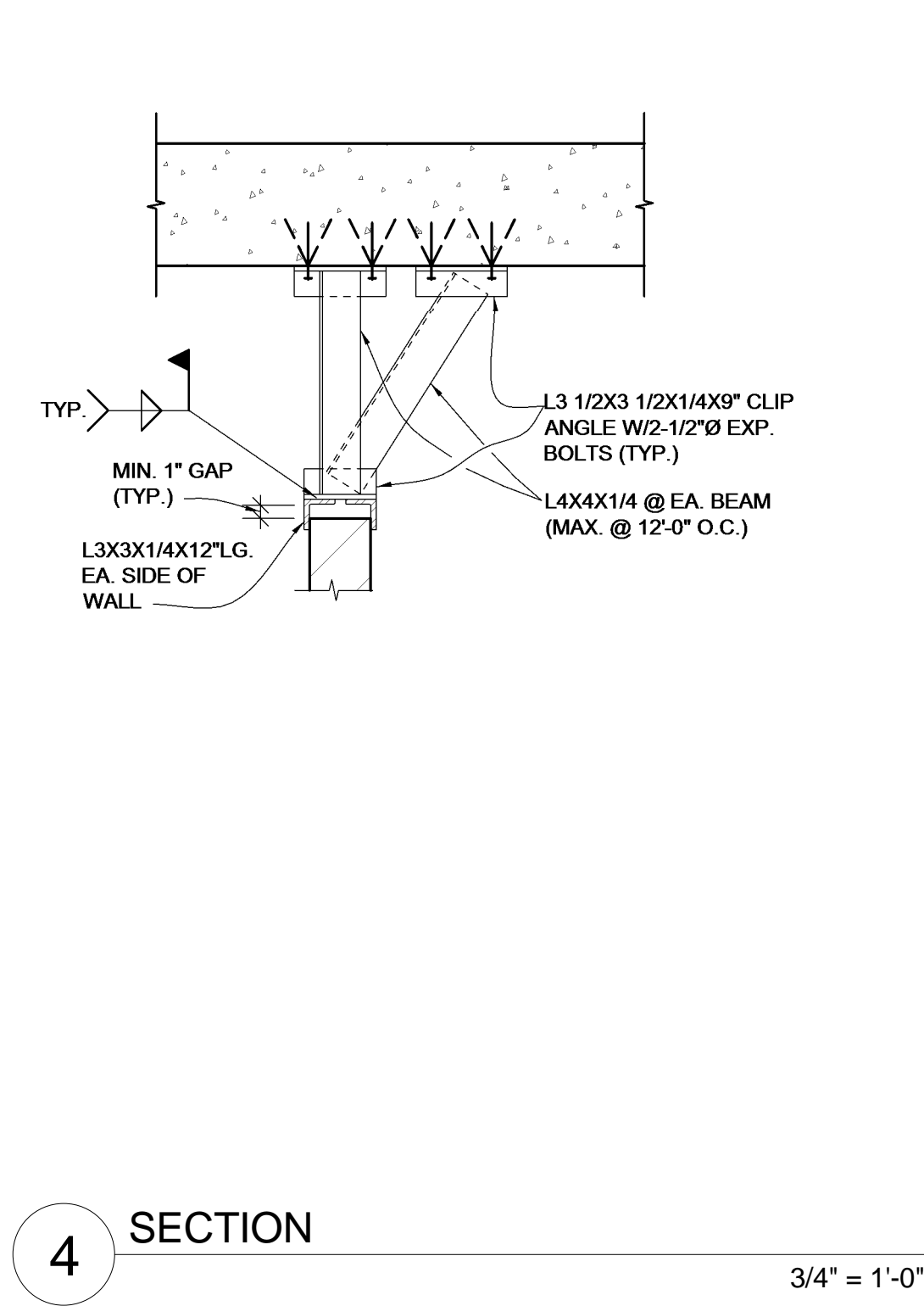
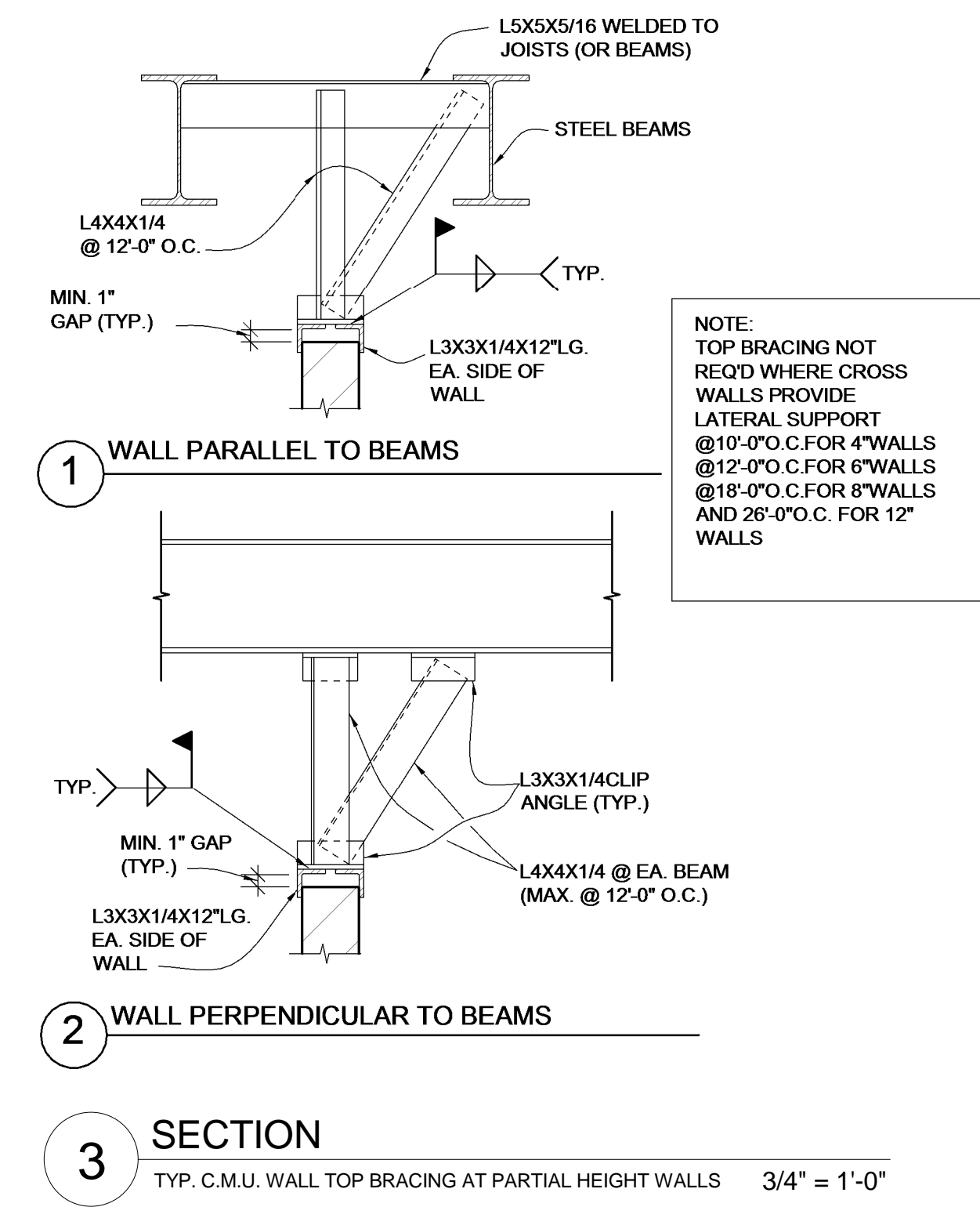
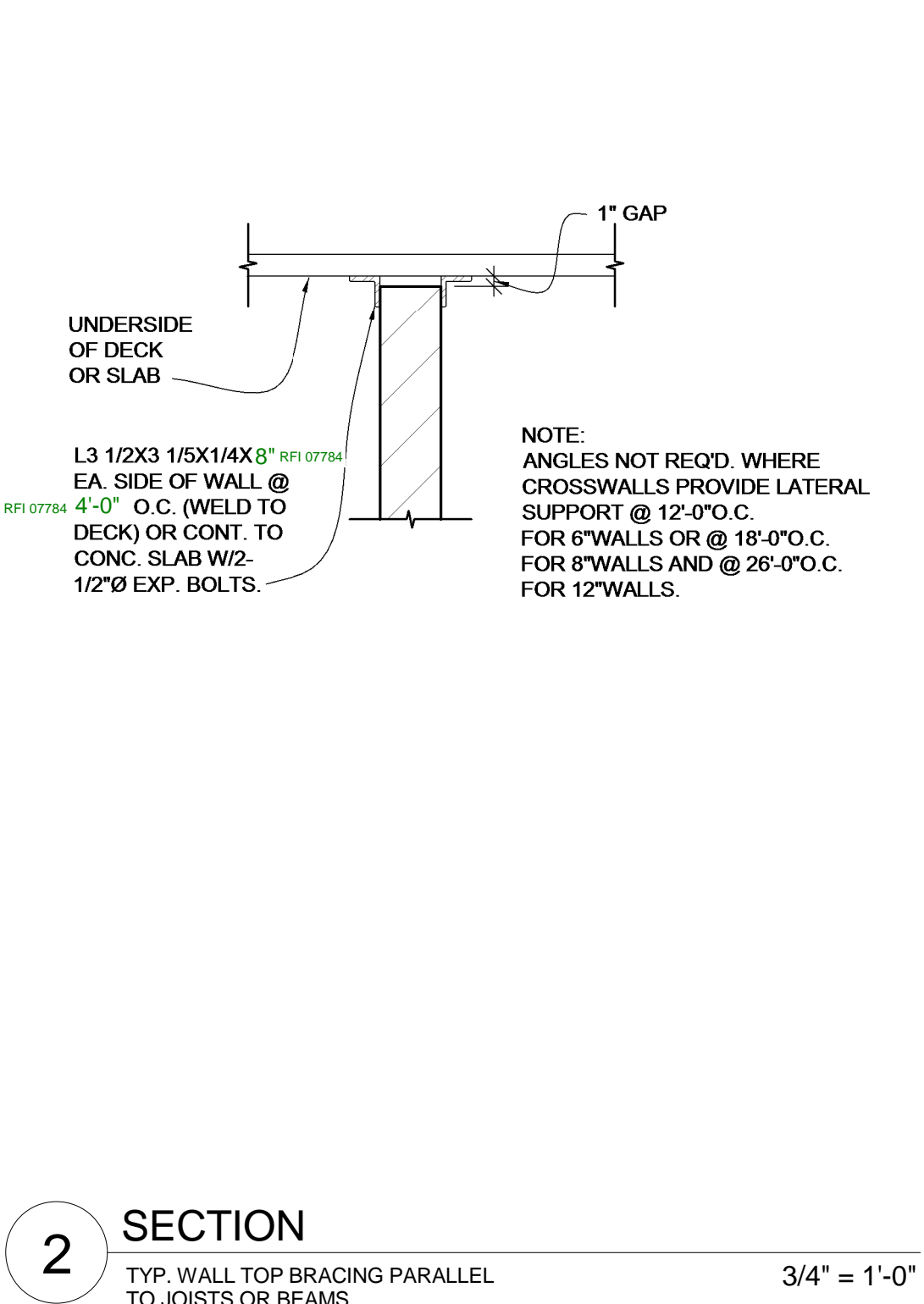
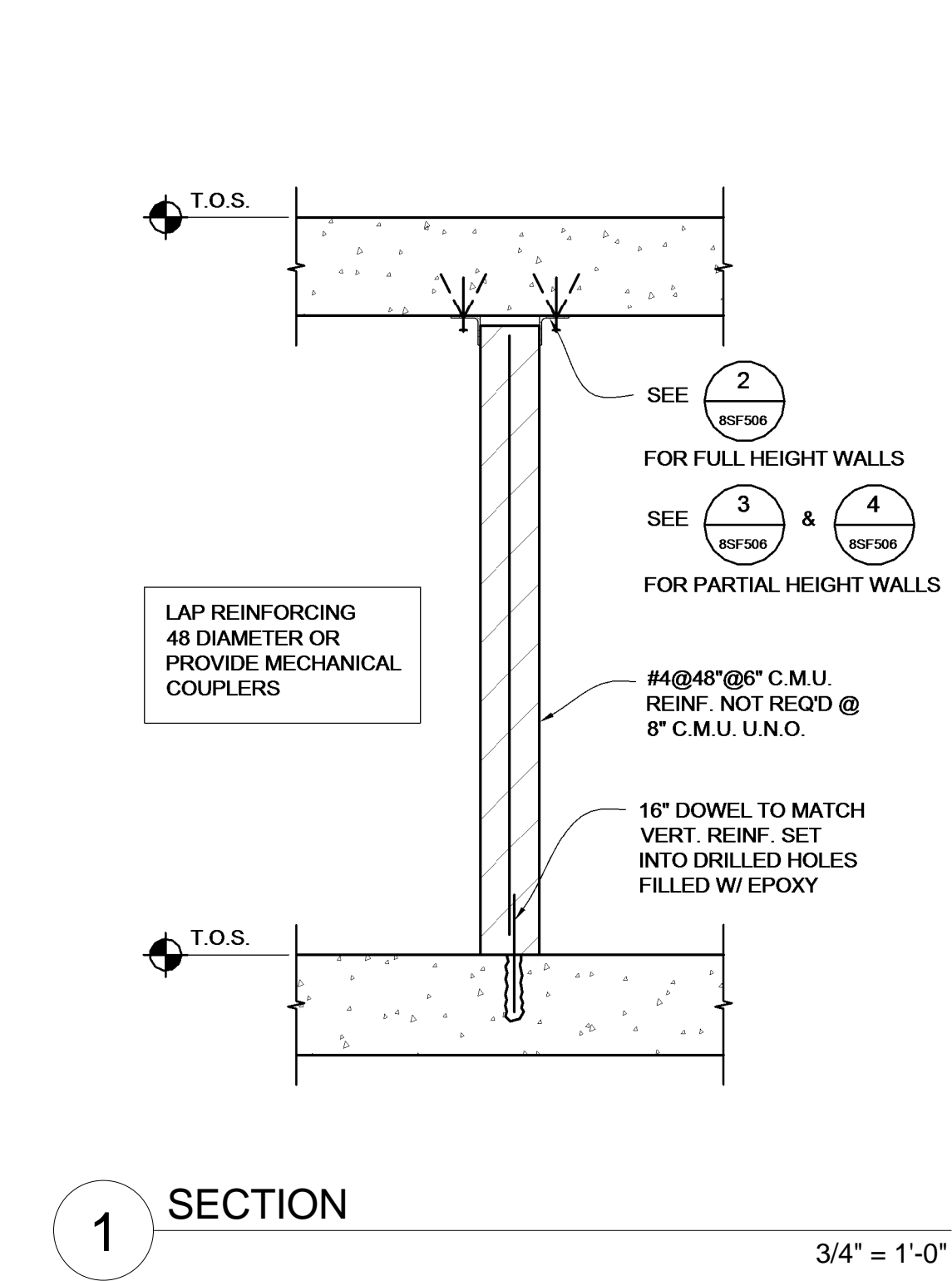
B

C

D

E

F



		CONSULTANTS: DESMAN ASSOCIATES / PARKING CODE CONSULTANTS, INC. / CODE CONSULTANT THE SEXTANT GROUP / AV & ACOUSTICAL HAMMER DESIGN ASSOCIATES / FOOD SERVICE PYBURN & ODOM / ABATEMENT TATA & HOWARD / TANK CONSULTANT I.S.C. GROUP, INC. / IRRIGATION DAN EUSER WATER ARCHITECTURE, INC. / WATER FEATURE			
7	RFI 6547	08/28/15			
1	ADDENDUM #1	09/21/12			
REVISIONS:		DATE			

ARCHITECT/ENGINEERS: studio NOVA SCHRENK & PETERSON CONSULTING ENGINEERS / CIVIL KORDA/NEMETH ENGINEERING / STRUCTURAL BR+A CONSULTING ENGINEERS / MECH, ELECT, PLUMBING, LOW VOLTAGE ARCHITECTURAL ENGINEERING / PLUMBING SCALES ASSOCIATES / FIRE PROTECTION COMMUNICATIONS DESIGN GROUP / LOW VOLTAGE	
---	--

DRAWING TITLE STRUCTURAL DETAILS	PROJECT TITLE SLVHCS REPLACEMENT MEDICAL CENTER PROJECT	PROJECT NUMBER 629-HS2-401	BUILDING NUMBER 8	OFFICE OF CONSTRUCTION AND FACILITIES MAINTENANCE
APPROVED: PROJECT DIRECTOR	LOCATION NEW ORLEANS, LOUISIANA	DATE 09/19/12	CHECKED TMD	
		DRAWN RDG		
		DRAWING NUMBER 8SF506		