

ONE INCH = FORTY FEET (1" = 40')

THREE INCHES = ONE FOOT

ONE AND ONE HALF INCHES = ONE FOOT

THREE QUARTERS INCH = ONE FOOT

ONE HALF INCH = ONE FOOT

ONE QUARTER INCH = ONE FOOT

ONE EIGHT INCH = ONE FOOT

ONE SIXTEENTH INCH = ONE FOOT

A

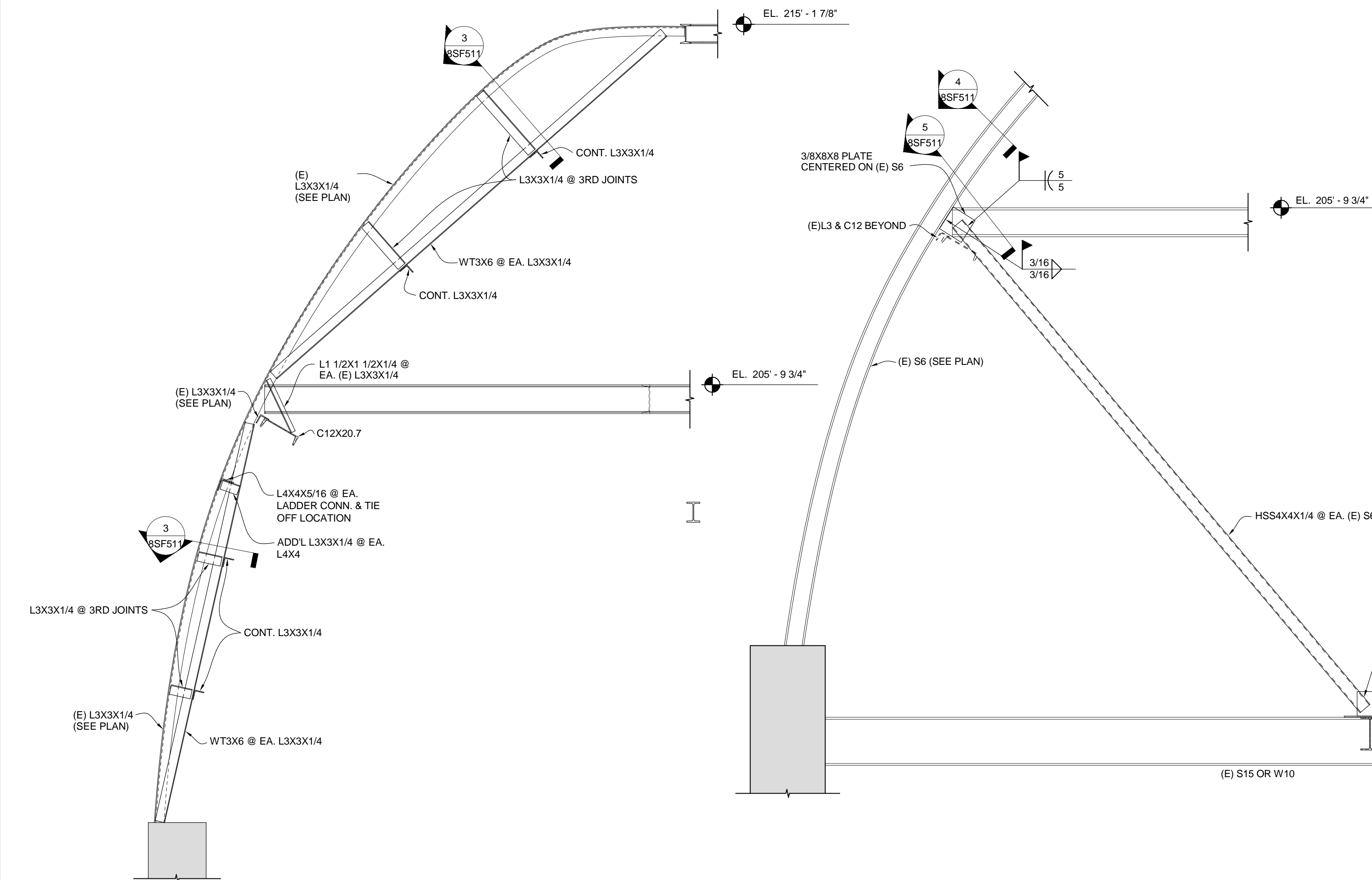
B

C

D

E

F



1 SECTION

1/2" = 1'-0"

2 SECTION

1/2" = 1'-0"

5 SECTION

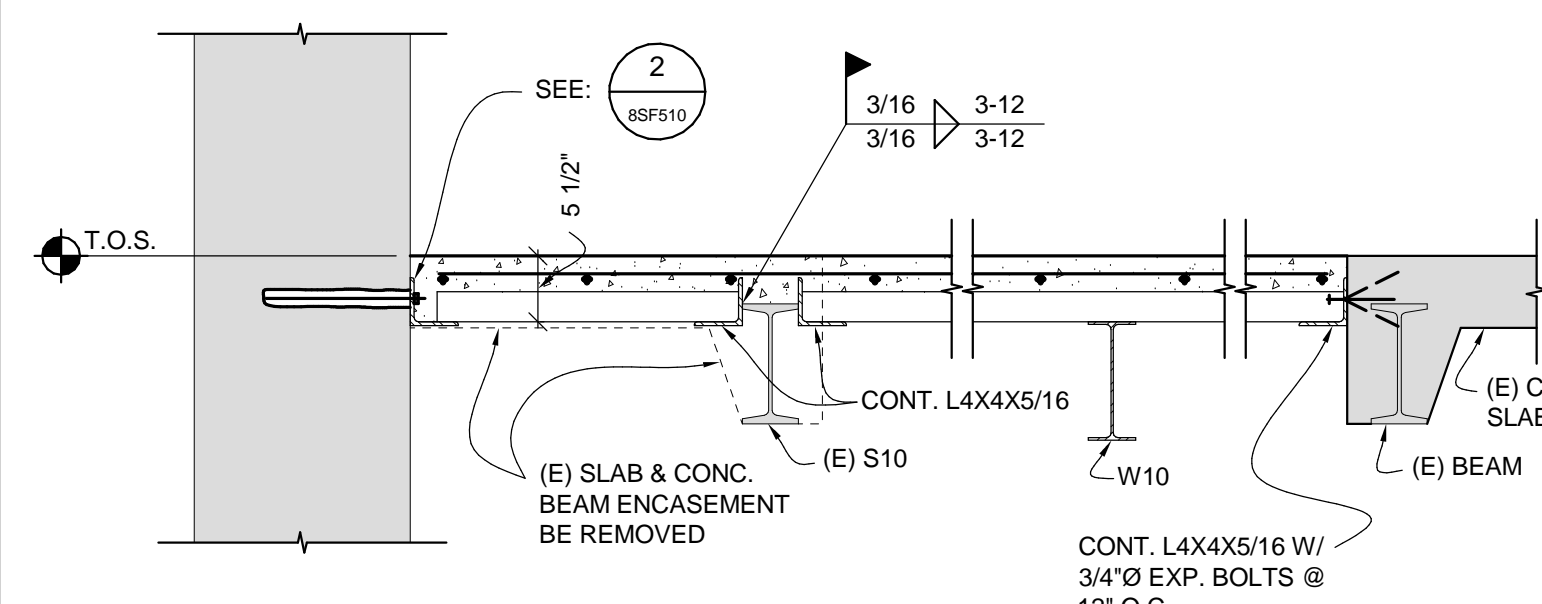
1 1/2" = 1'-0"

6 SECTION

3/4" = 1'-0"

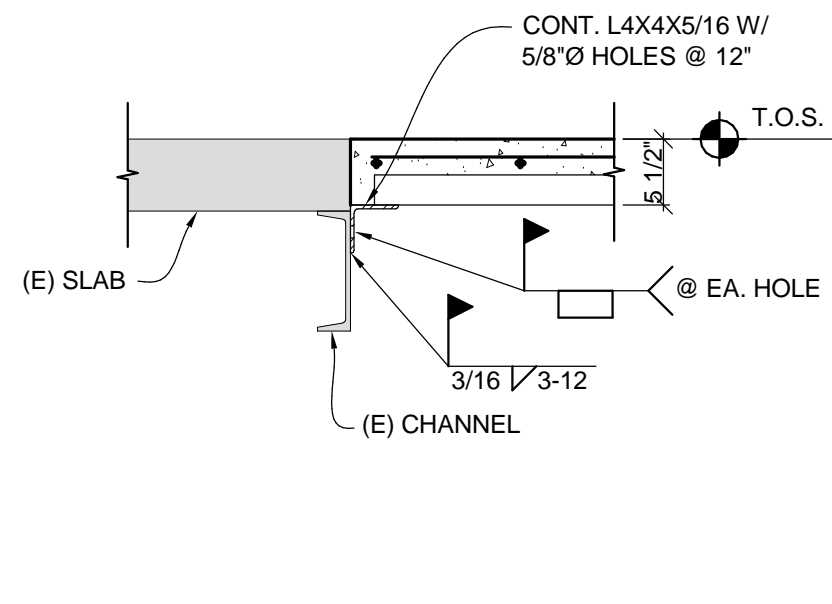
7 SECTION

3/4" = 1'-0"



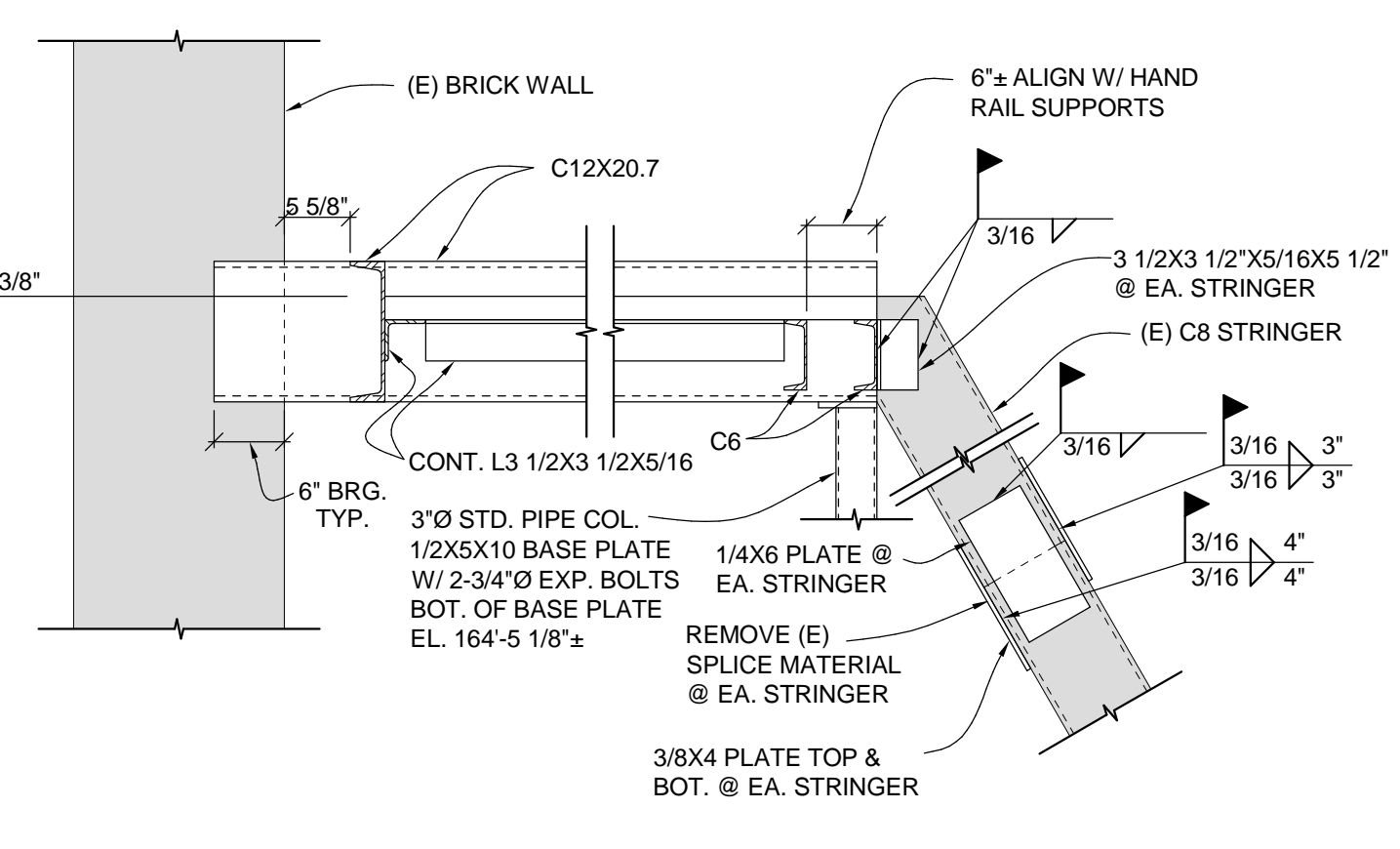
8 SECTION

3/4" = 1'-0"



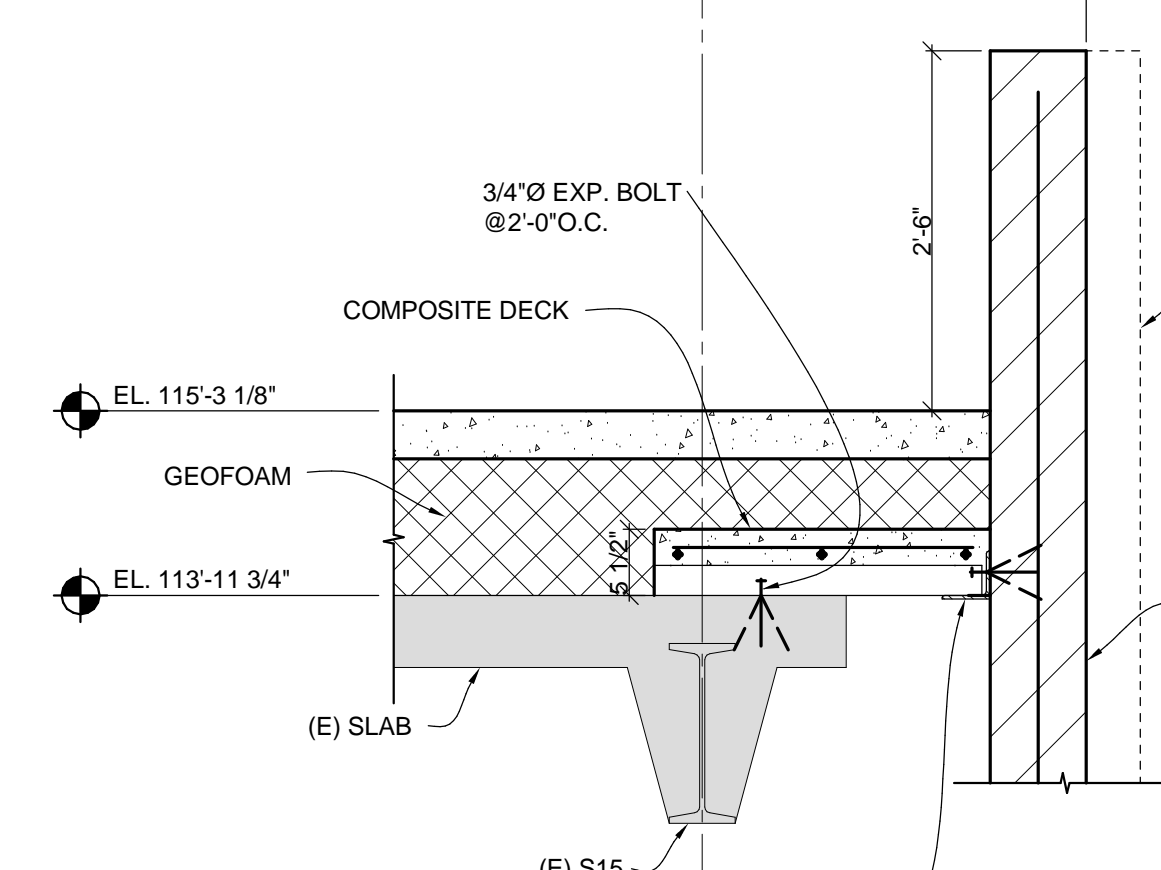
9 SECTION

3/4" = 1'-0"



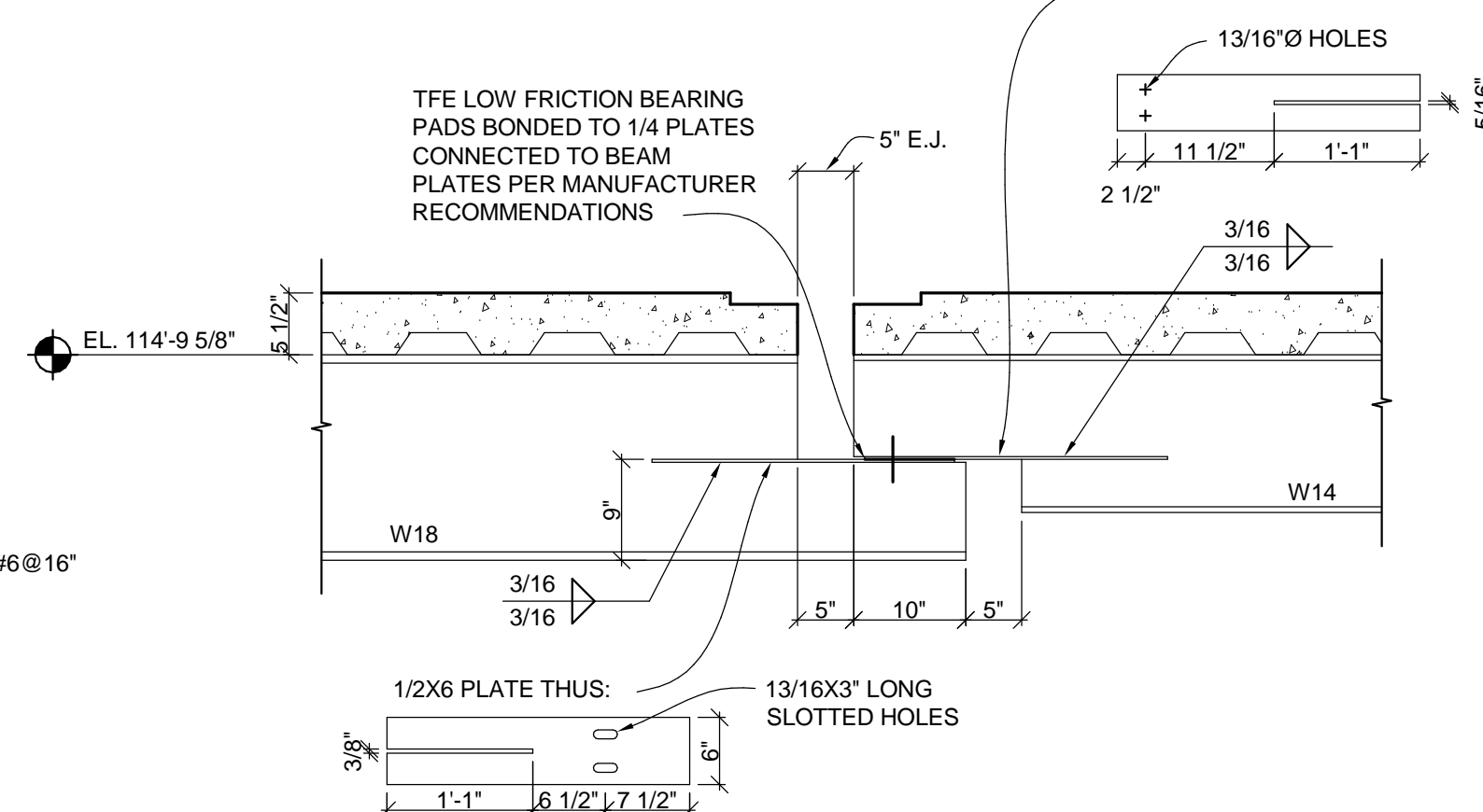
10 SECTION

3/4" = 1'-0"



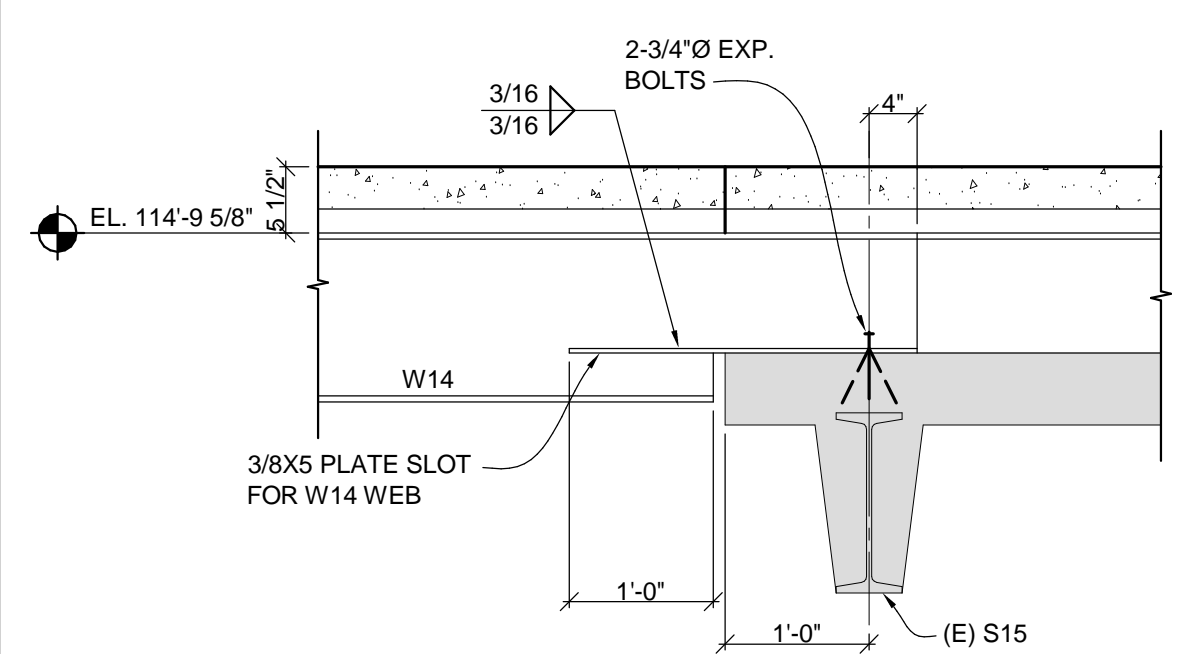
11 SECTION

3/4" = 1'-0"



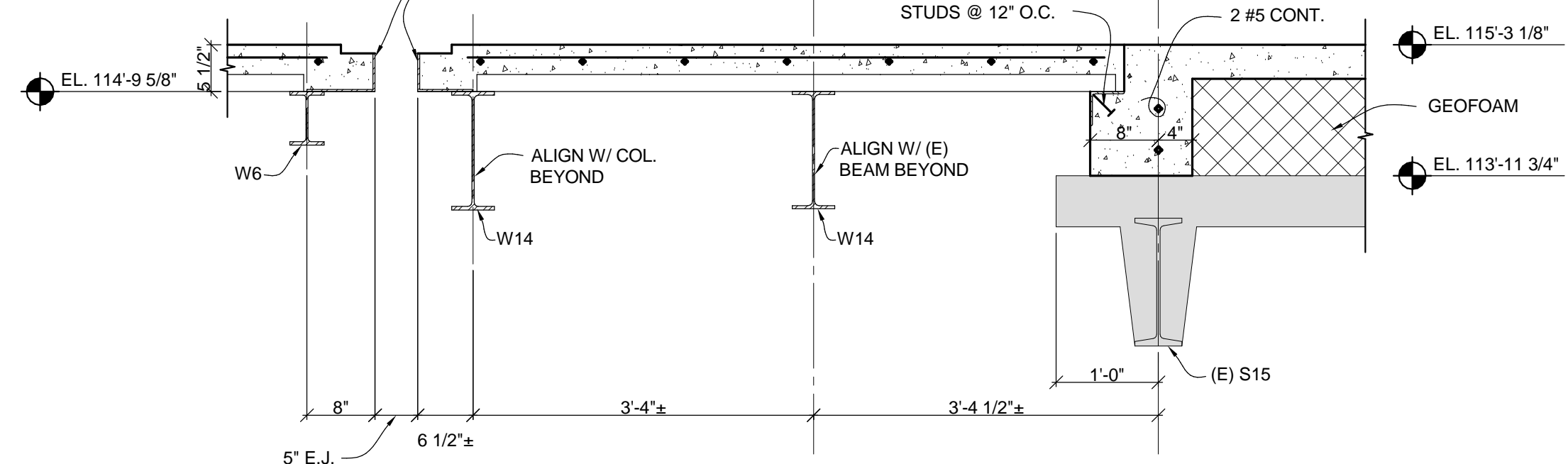
12 SECTION

3/4" = 1'-0"



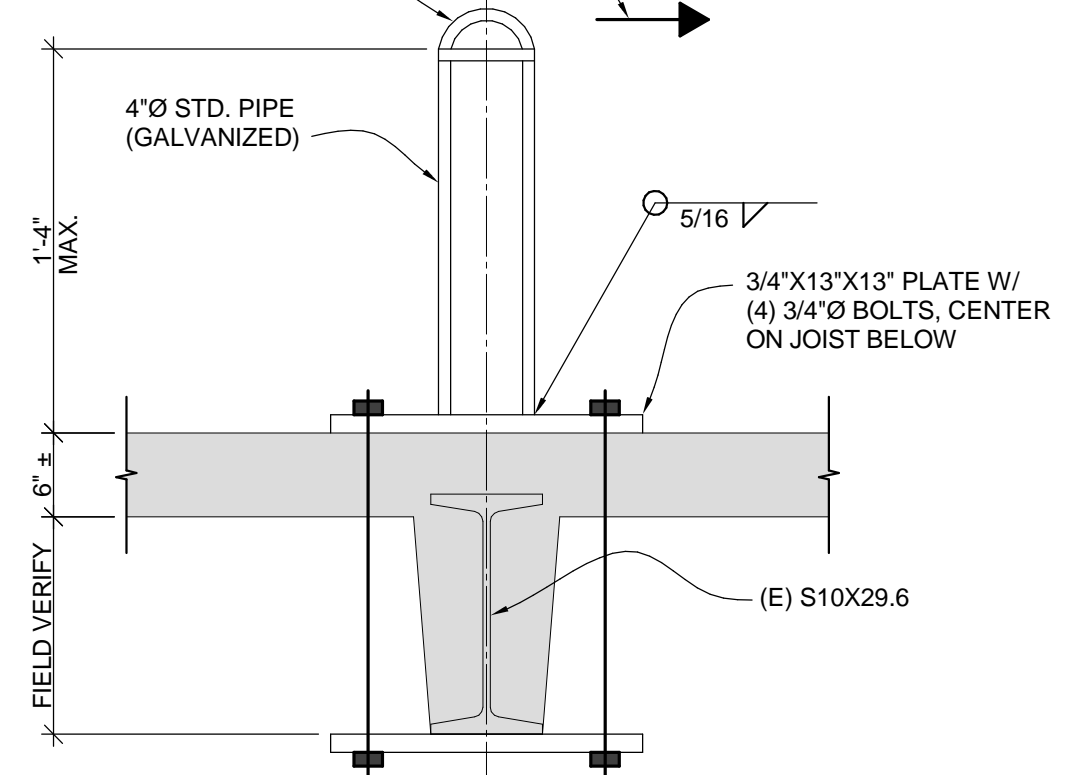
13 SECTION

3/4" = 1'-0"



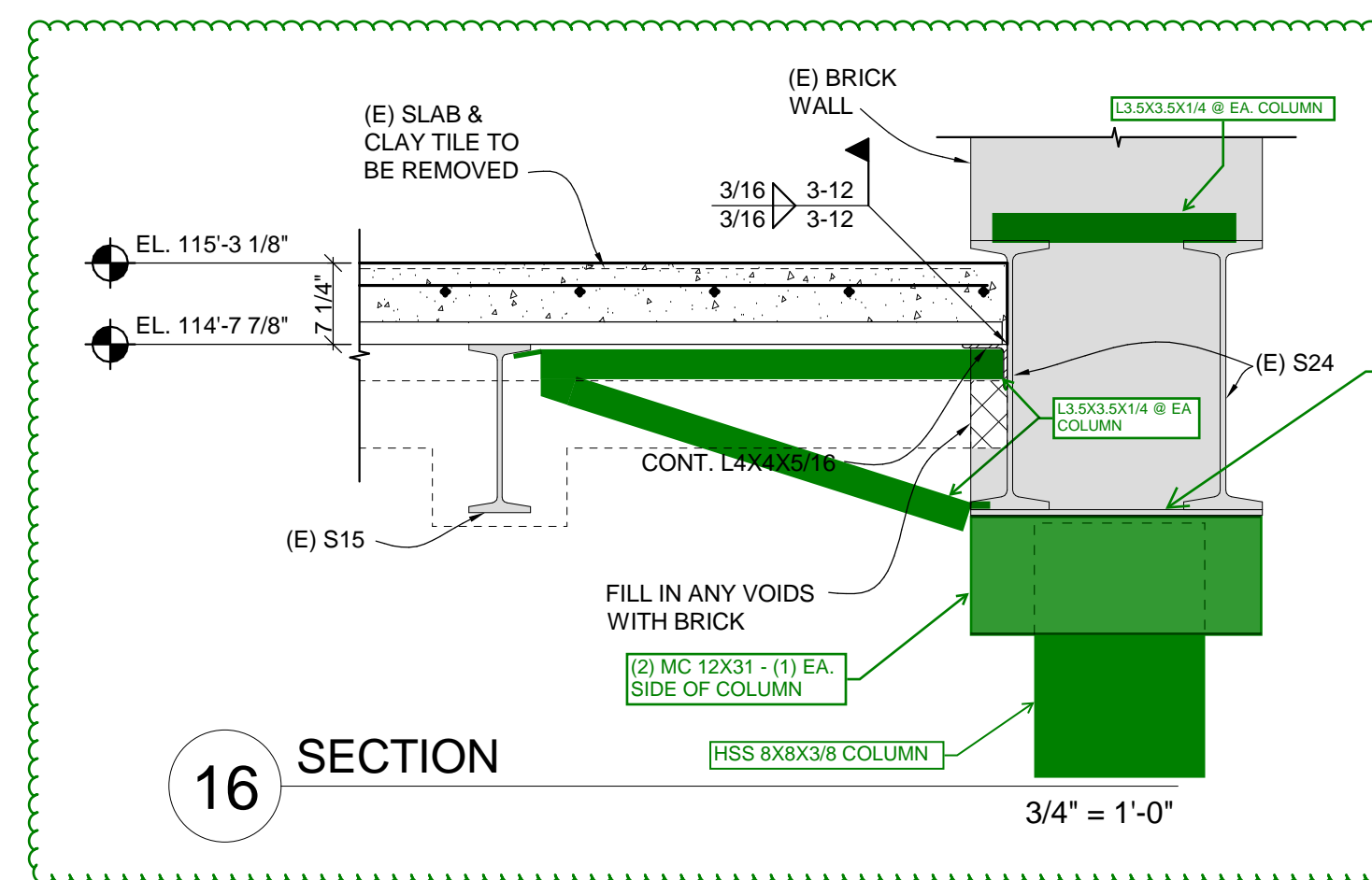
14 SECTION

3/4" = 1'-0"



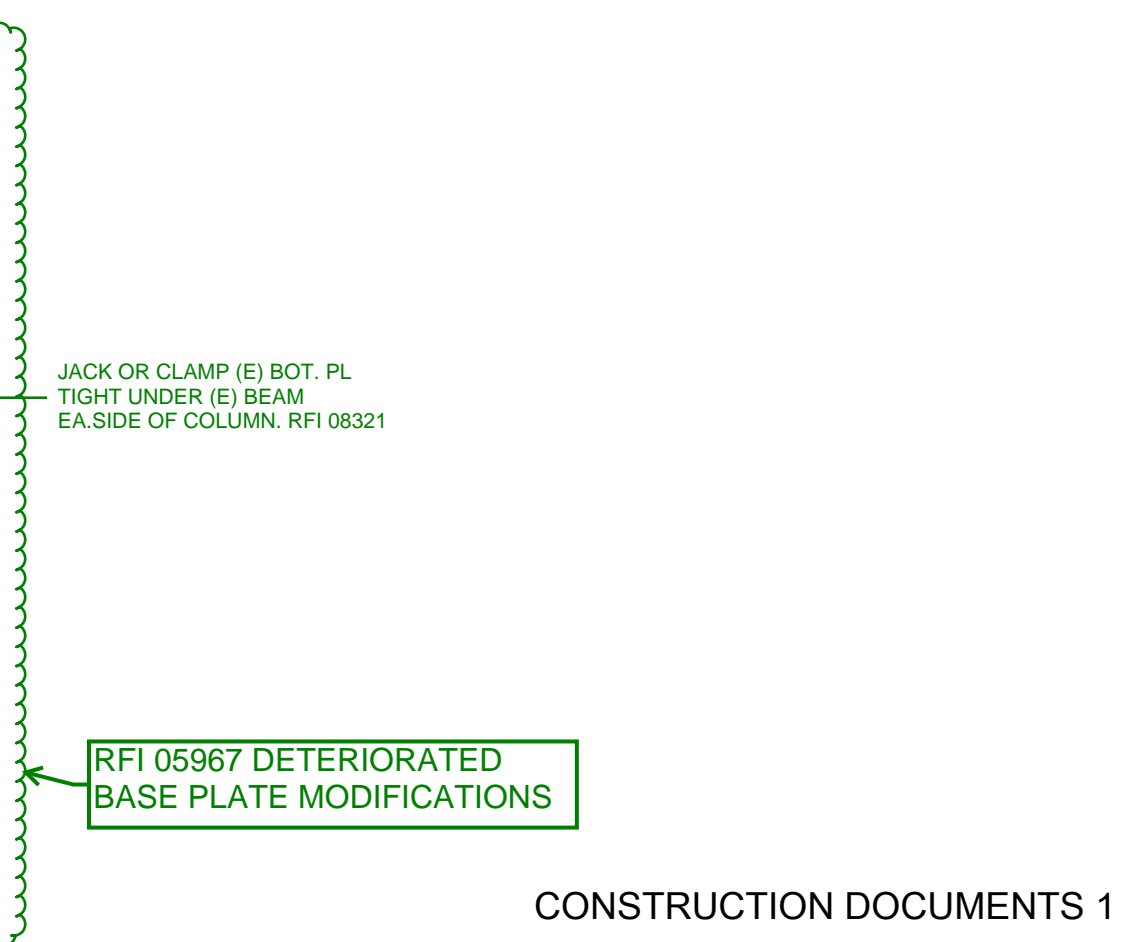
15 SECTION

N.T.S.

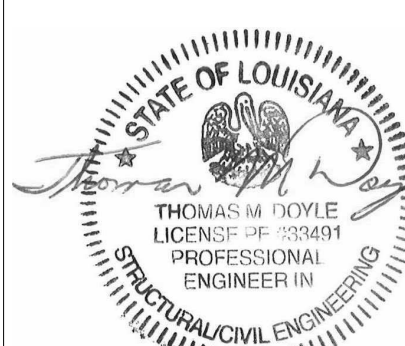


16 SECTION

3/4" = 1'-0"

CONSTRUCTION DOCUMENTS 1
FULLY SPRINKLERED

REVISIONS:	DATE	CONSULTANTS:
		DESMAN ASSOCIATES / PARKING
		CODE CONSULTANTS, INC. / CODE CONSULTANT
		THE SEXTANT GROUP / AV & ACOUSTICAL
		HAMMER DESIGN ASSOCIATES / FOOD SERVICE
		PYBURN & ODOM / ABATEMENT
		TATA & HOWARD / TANK CONSULTANT
		I.S.C. GROUP, INC. / IRRIGATION
		DAN EUSER WATER ARCHITECTURE, INC. / WATER FEATURE



ARCHITECT/ENGINEERS:

studio **NOVA**
SCHRENK & PETERSON CONSULTING ENGINEERS / CIVIL
KORDA/NEMETH ENGINEERING / STRUCTURAL
BR+A CONSULTING ENGINEERS / MECH, ELECT, PLUMBING, LOW VOLTAGE
ARCHITECTURAL ENGINEERING / PLUMBING
SCALES ASSOCIATES / FIRE PROTECTION
COMMUNICATIONS DESIGN GROUP / LOW VOLTAGE

DRAWING TITLE
STRUCTURAL DETAILS

APPROVED: PROJECT DIRECTOR

PROJECT TITLE
SLV/HCS REPLACEMENT MEDICAL
CENTER PROJECTLOCATION
NEW ORLEANS, LOUISIANADATE
July 16, 2012CHECKED
TMDDRAWN
RJCPROJECT NUMBER
629-HS2-401DOCUMENT SET PACKAGE
WP_09B

DRAWING NUMBER

8SF511

OFFICE OF
CONSTRUCTION
AND FACILITIES
MAINTENANCE