

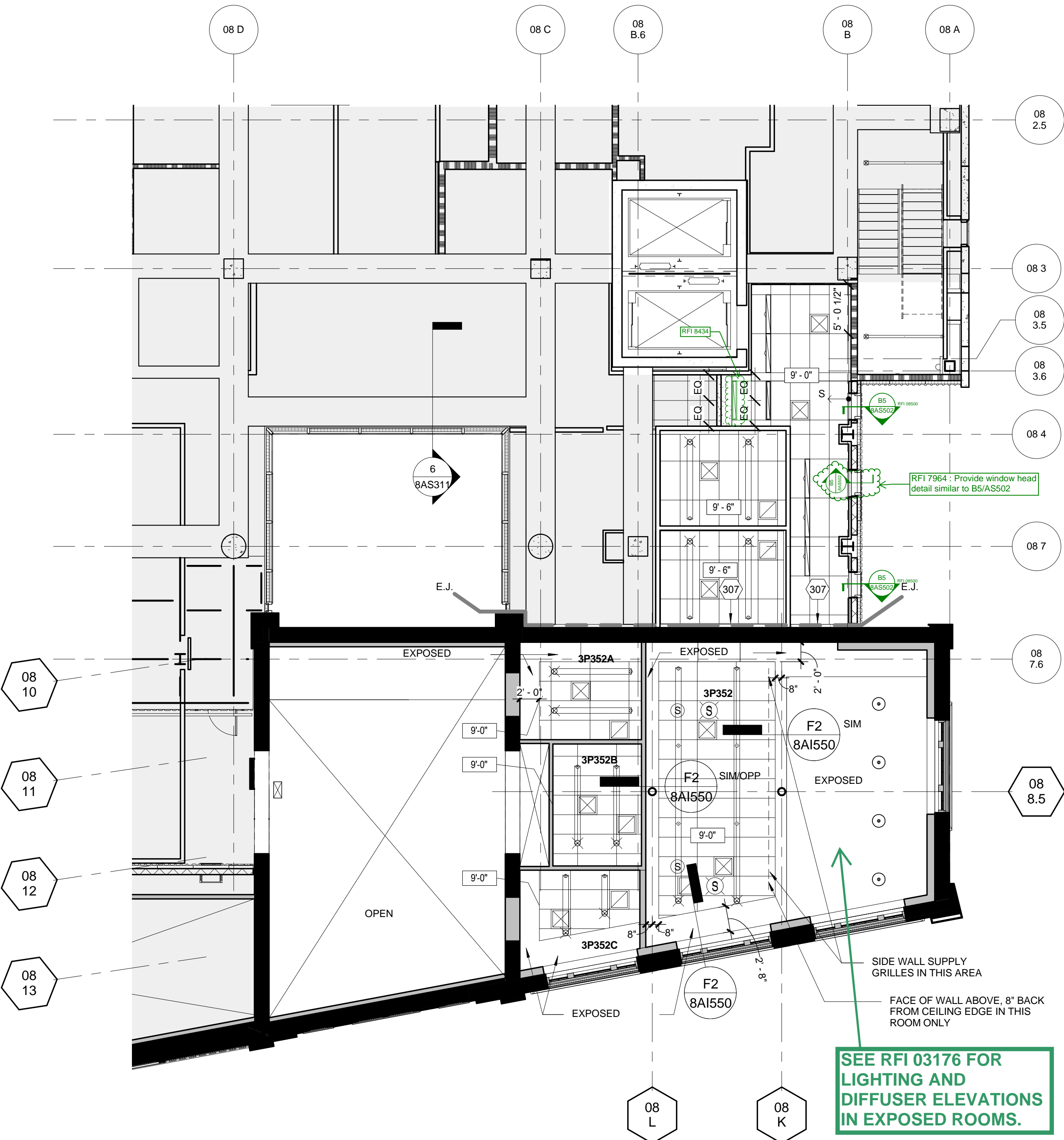
GENERAL RCP NOTES

1. **RATED WALLS:** ARE INDICATED IN PLAN AND RCP WITH GRAPHIC DENOTING HOURLY RATING AND/OR RESISTANT TO PASSAGE OF SMOKE. REFER TO PARTITION TAGS ON FLOOR PLANS.
2. **DIMENSIONS:** DIMS ARE TO FINISH FACE OF WALL OR SOFFIT UON.
3. **CEILING MATERIAL TRANSITIONS, FLUSH CONDITIONS:** REFER TO STD DETAILS B4.
4. **WHEN FLOOR HEIGHT VARIES** IN A ROOM, THE CEILING HT SHOWN IS HT ABOVE FLOOR AT ENTRY.
5. **ACOUSTIC TILE CLGS TO BE CENTERED** IN BOTH DIRECTIONS IN ROOM TYP. UON OR DIMENSIONED OTHERWISE. IF DIMENSION IS PROVIDED IN ONE DIRECTION ONLY, ASSUME GRID IS CENTERED IN OTHER DIRECTION.
6. **CUT TILES** SHALL BE NO SMALLER THAN 6 INCHES IN ANY DIRECTION.
7. **CEILING FINISHES/MATERIALS** NOTED ON TYPICALS FINISH SCHEDULE.
8. **TASK LTG UNDER WALL CABS** INDICATED. SEE LEGEND. REFER TO INT ELEVS AND/OR ENLARGED VIEWS FOR ALL WALL, CABINET, AND MILLWORK LIGHTING NOT SHOWN ON RCPs (XAI200 AND/OR XAI400 SERIES).
9. **NOT ALL SHEET NOTES APPLY** TO SHEET.
10. **CENTER LIGHT FIXTURE** AND OTHER CEILING DEVICES WIN ACOUSTIC TILE UON. IF ONLY DIMENSIONED IN ONE DIRECTION, ASSUME DEVICE IS CENTERED IN THE OTHER DIRECTION.
11. **DIMS TO CENTERLINE** OF LIGHT FIXTURE UON.
12. **EXPOSED TO VIEW** PORTIONS OF CEILING DEVICES SUPPLIED BY OTHER TRADES TO MATCH LINEAR MTL CLG. DEVICES IN MTL CLG TO MATCH MTL CLG FIN/COLOR.
13. **EXIT SIGNAGE/LIGHTING SHOWN ON ELECTRICAL LIGHTING DRAWINGS.** REFER TO XEL100 SERIES DRAWINGS.
14. **LIGHT FIXTURE SCHEDULE & XEL SERIES DWGS** GOVERN FOR FIXTURE SPECIFICATION. ARCHITECTURAL RCPs GOVERN FOR LIGHT FIXTURE LOCATION.
15. **SPRINKLER HEADS, SMOKE DETECTORS, OTHER MISC. ELECTRICAL DEVICES** NOT SHOWN. ORGANIZE DEVICES IN CENTER OF TILE OF SUSPENDED CEILING & ALIGN MULTIPLE DEVICES DOWN CORRIDORS AND THROUGHOUT LARGE ROOMS. COORD WITH OTHER TRADE'S DEVICES.

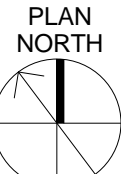
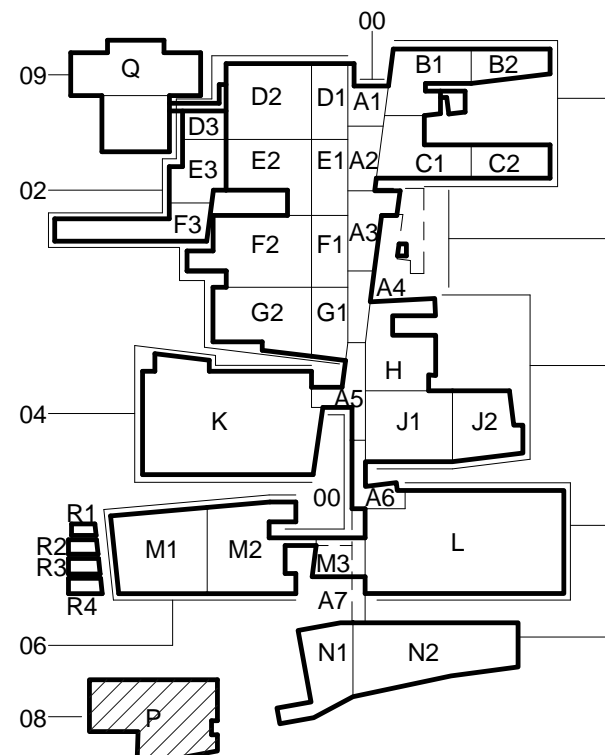
RCP SHEET NOTES

301. 6" TILE ALONG EDGE UON. TRIM ADJACENT TILE. SEE DETAIL C4 SHEET 8AI520.
302. 12.34.00 CLOSURE PANEL ABOVE CASEWORK. SEE DETAIL C1 SHEET 8AI532.
303. GYP BD SHADE POCKET FOR MANUAL SINGLE ROLLER SHADE (SECTION 12.24.00). SEE DETAIL D1 ON SHEET 8AI521.
304. GYP BD SHADE POCKET FOR MANUAL DOUBLE SHADES (SECTION 12.24.00). SEE DETAIL C1 ON SHEET 8AI521.
305. GYP BD SHADE POCKET FOR MANUAL SINGLE ROLLER SHADE(S) (SECTION 12.24.00). SEE DETAIL A1 & B1 ON SHEET 8AI521.
306. CONTINUOUS GYP BD POCKET FOR RECESSED LIGHT FIXTURE. SEE DETAIL D3 SHEET 8AI520.
307. 07.95.13 EXPANSION JT COVER IN CLG - SEE DETAIL B4 SHT 8AI517. NOT USED.
308. 09.54.23 METAL CEILING.
309. 07.95.13 EXPANSION JT COVER IN CLG - SEE DETAIL C4 SHT 8AI517.
310. EXHAUST DUCT - SEE EQUIPMENT CUTSHEET FOR REQUIREMENTS.
311. HOOD EXHAUST - SEE HVAC DWGS.
312. SURGICAL LIGHT - PROVIDE ABOVE CEILING SUPPORT. SEE D2 SHEET 8AI522.
313. EXAM LIGHT - PROVIDE ABOVE CEILING SUPPORT. SEE C2 SHEET 8AI522.
314. EXPOSED STRUCTURE - REFER TO FINISH SCHEDULE AND SPECS FOR ANY APPLIED FINISH OR FIREPROOFING NOT NOTED ON RCPs. NOT USED.
315. RE AND/OR EMI SHIELDING REQUIRED ABOVE CEILING FOR ROOM. CEILING LAYOUT - REFER TO MECHANICAL AND ELECTRICAL DWGS FOR DUCT AND LIGHTING LAYOUT THIS AREA.
316. ALIGN ELEMENTS.
317. SNORKEL DROP.
318. FRAME FOR LAB BENCH STRUCTURE - EXTENDS TO DECK, TYP.
319. SLOTTED CHANNEL FRAMING FOR LIGHT FIXTURE SUPPORT. FOR MULTIPLE LIGHTS SUPPORTED BY A SINGLE CHANNEL, SPACE LIGHTS EQUALLY. CENTER SINGLE OR MULT SUPPORTS IN ROOM OR AREA UON OR DIMENSIONED. IF DIMENSIONED IN ONE DIRECTION ONLY, ASSUME CENTERED IN OTHER DIRECTION. MOUNT TOP OF LIGHT AT 15'-0" A.F.F.
320. SLOTTED CHANNEL FRAMING - FOR LIGHT FIXTURE SUPPORT. FOR MULTIPLE LIGHTS SUPPORTED BY A SINGLE CHANNEL, SPACE LIGHTS EQUALLY. CENTER SINGLE OR MULT SUPPORTS IN ROOM OR AREA UON OR DIMENSIONED. IF DIMENSIONED IN ONE DIRECTION ONLY ASSUME CENTERED IN OTHER DIRECTION. MOUNT TOP OF LIGHT AT 17'-6" A.F.F.
321. NOT USED.
322. CUT TILE SEE DETAIL E3 SHEET 8AI522.
323. CUT TILE SEE DETAIL D3 SHEET 8AI522.
324. CUT TILE SEE DETAIL F5 SHEET 8AI522.
325. SEE ELECTRICAL PLAN FOR SUSPENDED LIGHTING LOCATION.
326. WATER LINE CONNECTION FOR EQUIPMENT.
327. NOT USED.
328. 09.51.00 OVERSIZE CEILING TILE.
329. 10.11.16 SLIDING PANELS & TRACK.
330. 08.80.10 FIXED GLASS PANEL.

REFER TO 04A00 FOR REFLECTED CEILING PLAN SYMBOLS LEGEND

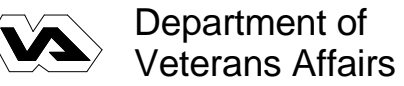


E3 B8 Level 3.5  
SCALE: 1/8" = 1'-0"



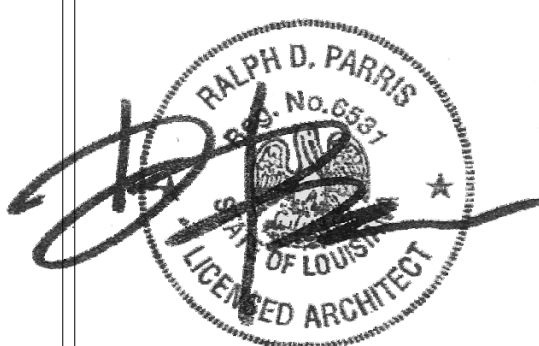
CONSTRUCTION DOCUMENTS 1  
FULLY SPRINKLERED

OFFICE OF  
CONSTRUCTION  
AND FACILITIES  
MANAGEMENT



CONSULTANTS:

DESMAN ASSOCIATES / PARKING  
CODE CONSULTANTS, INC. / CODE CONSULTANT  
THE SEXTANT GROUP / AV & ACOUSTICAL  
HAMMER DESIGN ASSOCIATES / FOOD SERVICE  
PYBURN & ODOM / ABATEMENT  
TATA & HOWARD / TANK CONSULTANT  
I.S.C. GROUP, INC. / IRRIGATION  
DAN EUSER WATER ARCHITECTURE, INC. / WATER FEATURE



ARCHITECT/ENGINEERS:

studio **NOVA**  
SCHRENK & PETERSON CONSULTING ENGINEERS / CIVIL  
KORDA/NEMETH ENGINEERING / STRUCTURAL  
BR+A CONSULTING ENGINEERS / MECH. ELECT. PLUMBING, LOW VOLTAGE  
ARCHITECTURAL ENGINEERING / PLUMBING  
SCALES ASSOCIATES / FIRE PROTECTION

DRAWING TITLE  
BLDG 8 LEVEL 3.5 RCP

APPROVED: PROJECT DIRECTOR

*Yadda Sanders*

PROJECT TITLE  
SLVHCS REPLACEMENT MEDICAL  
CENTER PROJECT

LOCATION  
NEW ORLEANS, LOUISIANA

DATE  
July 16, 2012

CHECKED  
JR

DRAWN  
JK

PROJECT NUMBER  
100342.00  
BUILDING NUMBER  
08  
DOCUMENT SET PACKAGE  
WP\_09B

DRAWING NUMBER

8AS143.5