

GENERAL INTERIOR FINISH PLAN NOTES

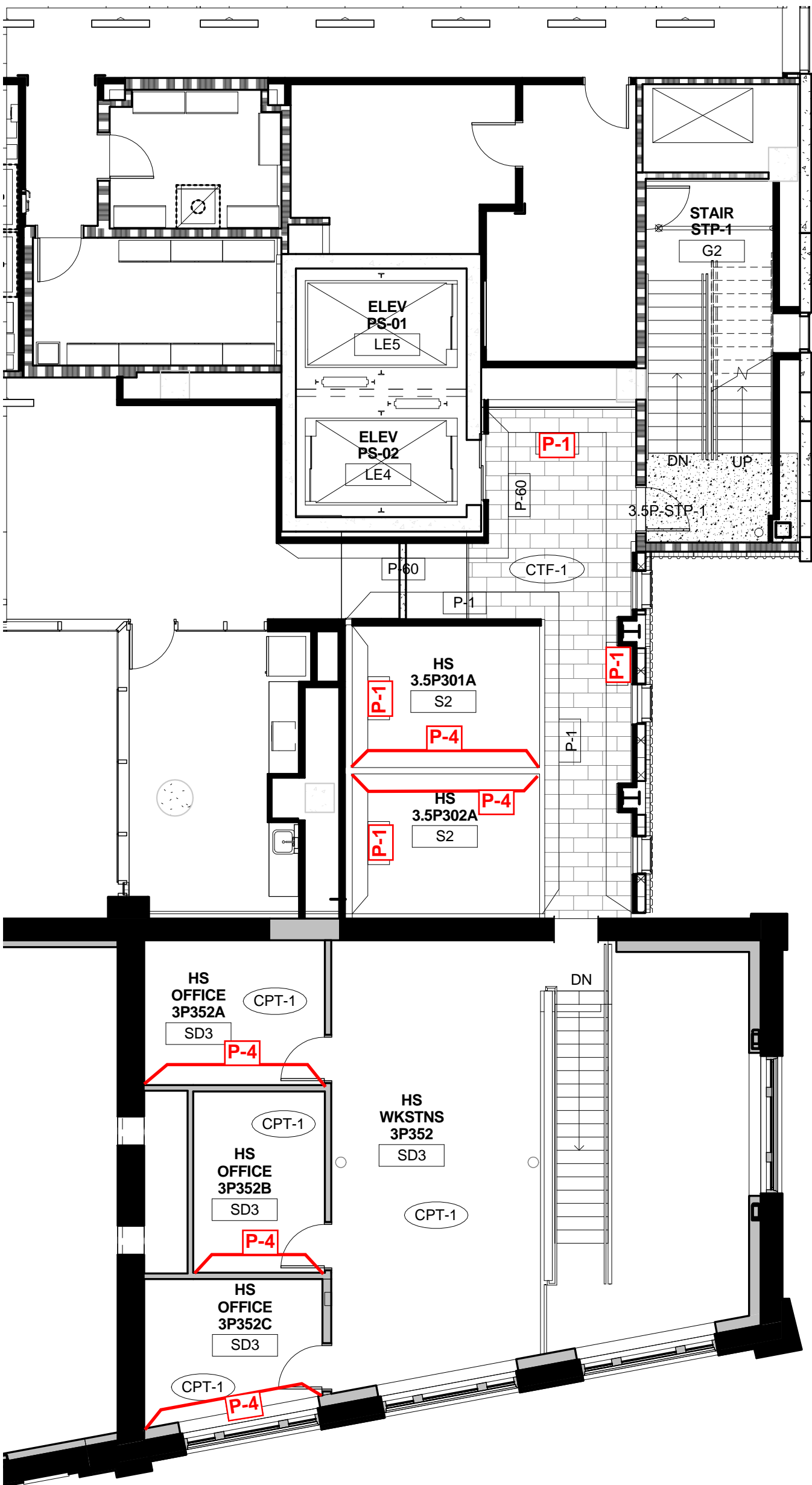
- NO T-SEAMS OR PARTIAL PIECES ACCEPTED FOR SEAMLESS FLOORING
 - SEE SPECIFICATIONS IN CONJUNCTION WITH FINISH LEGEND FOR FINISH INFORMATION
 - ALL WALLS TO BE PAINTED P-2 UON
 - METAL DOOR FRAMES AND DOOR TO MATCH COLOR OF THE ADJACENT WALL
 - SEAMS FOR CARPET AND SEAMLESS FLOORING TO NOT BE LOCATED AT DOORWAYS
 - REFER TO WALL PROTECTION TYPICAL SHEET FOR FINISH APPLICATION
 - TYPICAL FLOOR TRANSITION OCCUR UNDER OR AT CENTER LINE OF DOORS UON
 - WALL PROTECTION LOCATION AS SHOWN ON AF SERIES DRAWINGS AND EXTENT AS INDICATED ON ELEVATIONS
 - FOR ALL COUNTERTOPS, REFER TO SHEET 0A1532 FOR COUNTERTOP FINISH APPLICATION DETAIL UON
 - CPT TO BE LAID MONOLITHIC ASHLAR WITH GRAIN RUNNING PERPENDICULAR TO CORRIDORS
 - PAINT TO BE SEMI-GLOSS IN ALL TOILET ROOMS
 - CARPET TO BE FLUSH WITH ADJACENT FLOOR MATERIAL
 - GROUT JOINTS TO ALIGN WITH FINISHED BASE OF WALL
 - DRAWINGS PROVIDE FINISH CODE FOR ACCENTS IN FLOORING AND WALL AND TYPICAL FINISH ROOM APPLICATIONS
 - REFER TO SCHEDULE AND LEGEND IN CONJUNCTION WITH FINISH PLANS
 - ALL FULL HEIGHT CORNER GUARDS SHOULD BE COORDINATED WITH ELEVATIONS AND REFLECTED CEILING PLANS
 - CRASH RAILS AND HANDRAILS TO TERMINATE 2" FROM METAL DOOR FRAMES AND CORNER GUARDS UON
 - ALL TOILET PARTITIONS TO MATCH P-1 UON
 - REFER TO REFLECTED CEILING PLANS FOR ACCENT CEILING PAINT LOCATIONS
 - INTERIOR OF OPEN CABINETRY TO BE FINISHED WITH SAME MATERIAL LISTED UNDER VERTICAL WOODCASEWORK
 - REFER TO SHEETS 8A1515 & 8A1516 FOR INTERIOR FINISH DETAILS
 - CONCRETE COLUMNS NOT PAINTED UON. SEAL PER SPECIFICATION
 - ALL EXISTING EXPOSED BRICK NOT TO BE PAINTED UON.
 - REFER TO SHEET 8A1515 FOR INTERIOR FLOORING TRANSITION AND BASE DETAILS
 - CEILING AREAS EXPOSED TO ABOVE IN FINISHED SPACES WITHIN THE DIXIE FOOTPRINT SHALL BE PAINTED P-8, INCLUDING STRUCTURE, FIREPROOFING, AND ALL UTILITIES AND THEIR ASSOCIATED SUPPORTS
- RFI 7129 BLACK MATERIAL ON EXISTING BRICK WALLS IS TO BE REMOVED WHERE EXPOSED TO VIEW. TYPICAL AT ALL LOCATIONS.

INTERIOR FINISH PLAN CODED NOTES

- REFER TO A1500 SERIES SHEETS FOR MILLWORK FINISH DESIGNATIONS
- ALIGN FLOOR TRANSITIONS WITH WALL / ADJACENT FINISHED FACE
- ALL SHOWERS TO HAVE FULL-HEIGHT CERAMIC TILE ON ALL WALLS
- SSB-1 USED AT BASE OF COLUMN
- WALL GRAPHIC TO BE APPLIED - WILL COVER ENTIRE WALL. REFER TO EGD PACKAGE FOR DETAILS.
- ALIGN TO FRAME OF DOOR

SYMBOLS LEGEND

- FLOOR FINISH - SEE 8AF602
- WALL FINISH - SEE 8AF603
- ROOM NAME NUMBER [KEY]
- ROOM FINISH KEY - PROVIDED FOR COMPARING TO TYPICAL ROOM FINISHES ON FINISH PLANS AND ROOM FINISH SCHEDULE
- TYPICAL ROOM/TYPICAL ROOM FINISH CODE
- WALL PROTECTION - SEE 8AF605
- CORNERGUARD - SEE 8AF603



- GENERAL NOTES:
- U.O.N. DOOR FRAME COLOR TO MATCH ADJACENT WALL WHERE THERE ARE DIFFERENT COLORS ON TWO SIDES OF A WALL - TRANSITION COLORS AT INSIDE CORNER OF DOOR FRAME RABBET AND STOP ON DOOR SIDE OF STOP.
 - PAINT INTERIOR HM WINDOW FRAMES COLOR OF ADJACENT WALL. WHERE THERE ARE DIFFERENT COLORS ON TWO SIDES OF THE WALL TRANSITION COLORS AT INSIDE CORNER OF RABBET AND STOP AT GLAZING STOP SIDE OF FRAME.
 - PAINT HM DOOR COLOR OF ADJACENT DOOR FRAME. WHERE FRAME HAS DIFFERENT COLOR ON EACH SIDE, PAINT DOOR TWO COLORS TO MATCH ADJACENT DOOR FRAME.
 - ALL WALLS TO BE PAINTED P-2 UON.
 - ANY CHANGE TO FINISH TYPE NOTED IN THIS BULLETIN OVERRIDES INFORMATION IN THE FINISH SCHEDULE

RFI 8379 : All HM door frames and doors to be painted P-4

1-8 B8 FINISH FLOOR PLAN LEVEL 3.5
1/8" = 1'-0"

ARCHITECT/ENGINEERS:

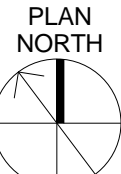
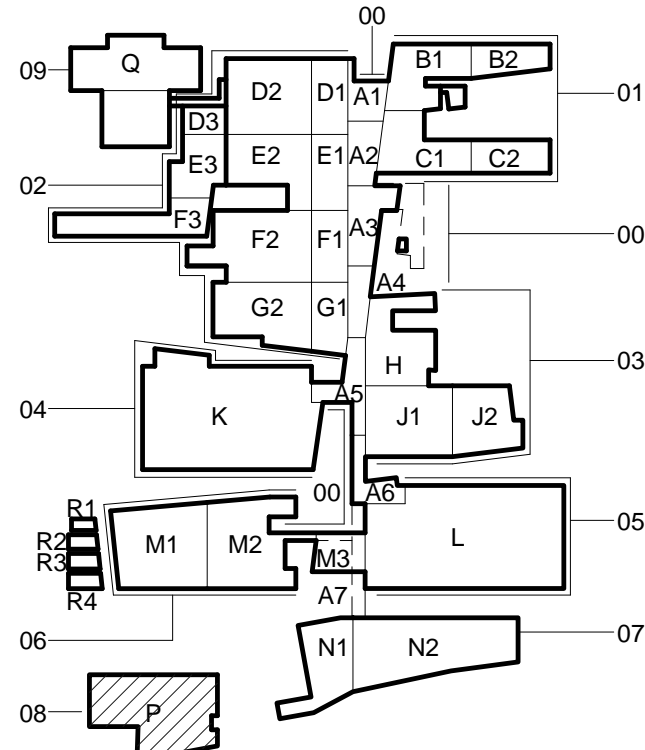
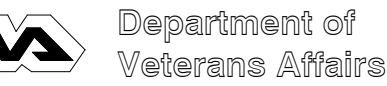
studio **NOVA**
SCHRENK & PETERSON CONSULTING ENGINEERS / CIVIL
KORDA/NEMETH ENGINEERING / STRUCTURAL
BR+A CONSULTING ENGINEERS / MECH. ELECT, PLUMBING, LOW VOLTAGE
ARCHITECTURAL ENGINEERING / PLUMBING
SCALES ASSOCIATES / FIRE PROTECTION

CONSULTANTS:

DESMAN ASSOCIATES / PARKING
CODE CONSULTANTS, INC. / CODE CONSULTANT
THE SEXTANT GROUP / AV & ACOUSTICAL
HAMMER DESIGN ASSOCIATES / FOOD SERVICE
PYBURN & ODOM / ABATEMENT
TATA & HOWARD / TANK CONSULTANT
I.S.C. GROUP, INC. / IRRIGATION
DAN EUSER WATER ARCHITECTURE, INC. / WATER FEATURE

REVISIONS:	DATE
CHANGES INDICATED IN RED FONT - BULL 048 - 10/13/2015	

OFFICE OF
CONSTRUCTION
AND FACILITIES
MANAGEMENT



CONSTRUCTION DOCUMENTS 1
FULLY SPRINKLERED

PROJECT NUMBER	BUILDING NUMBER
100342.00	08
DOCUMENT SET PACKAGE	WP_09B
DRAWING NUMBER	8AF103.5

DRAWING TITLE	BLDG 8 LEVEL 3.5 FINISH FLOOR PLAN
APPROVED: PROJECT DIRECTOR	
PROJECT TITLE	SLVHCS REPLACEMENT MEDICAL CENTER PROJECT
LOCATION	NEW ORLEANS, LOUISIANA
DATE	July 16, 2012
CHECKED	JR
DRAWN	AN