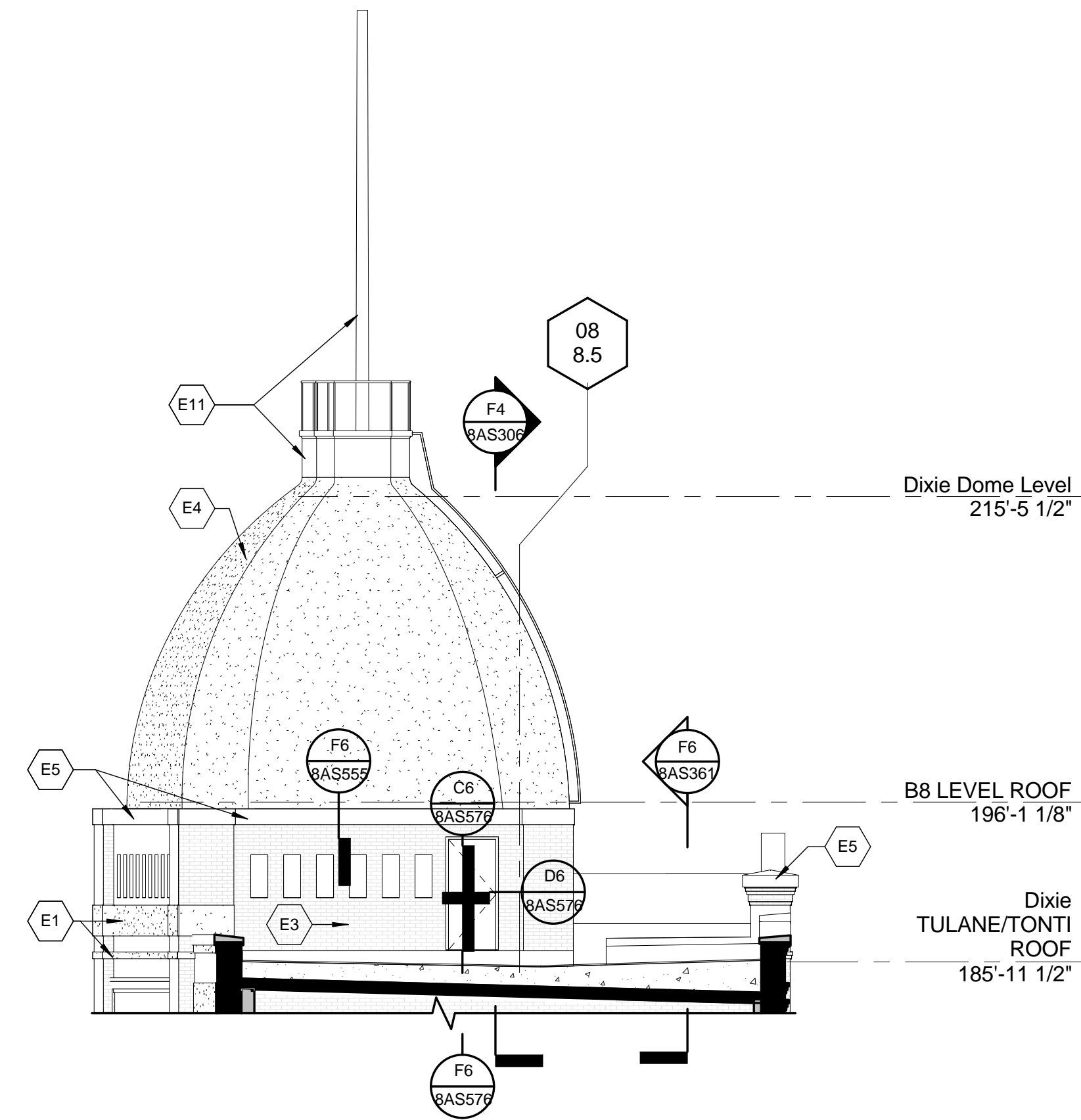
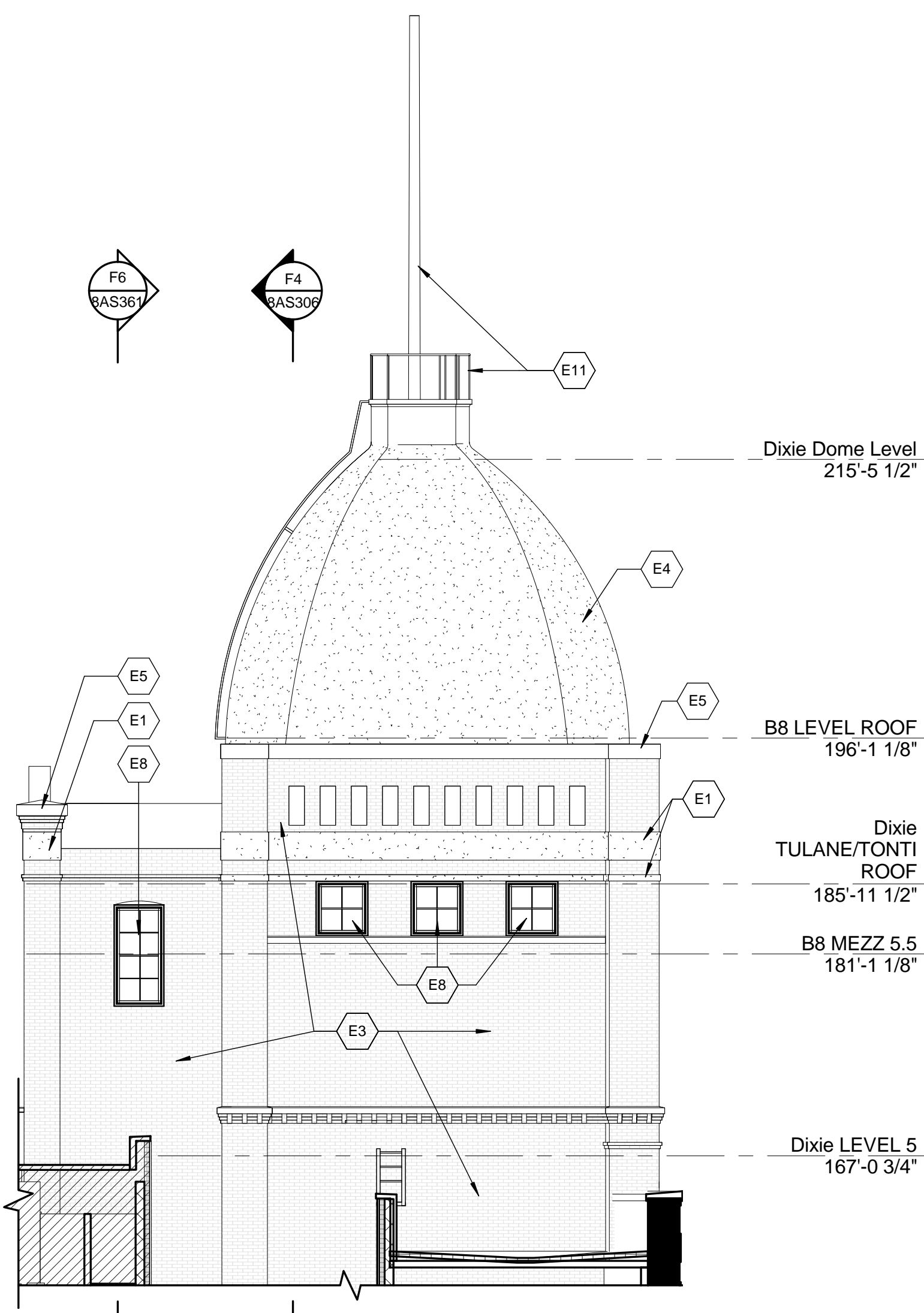
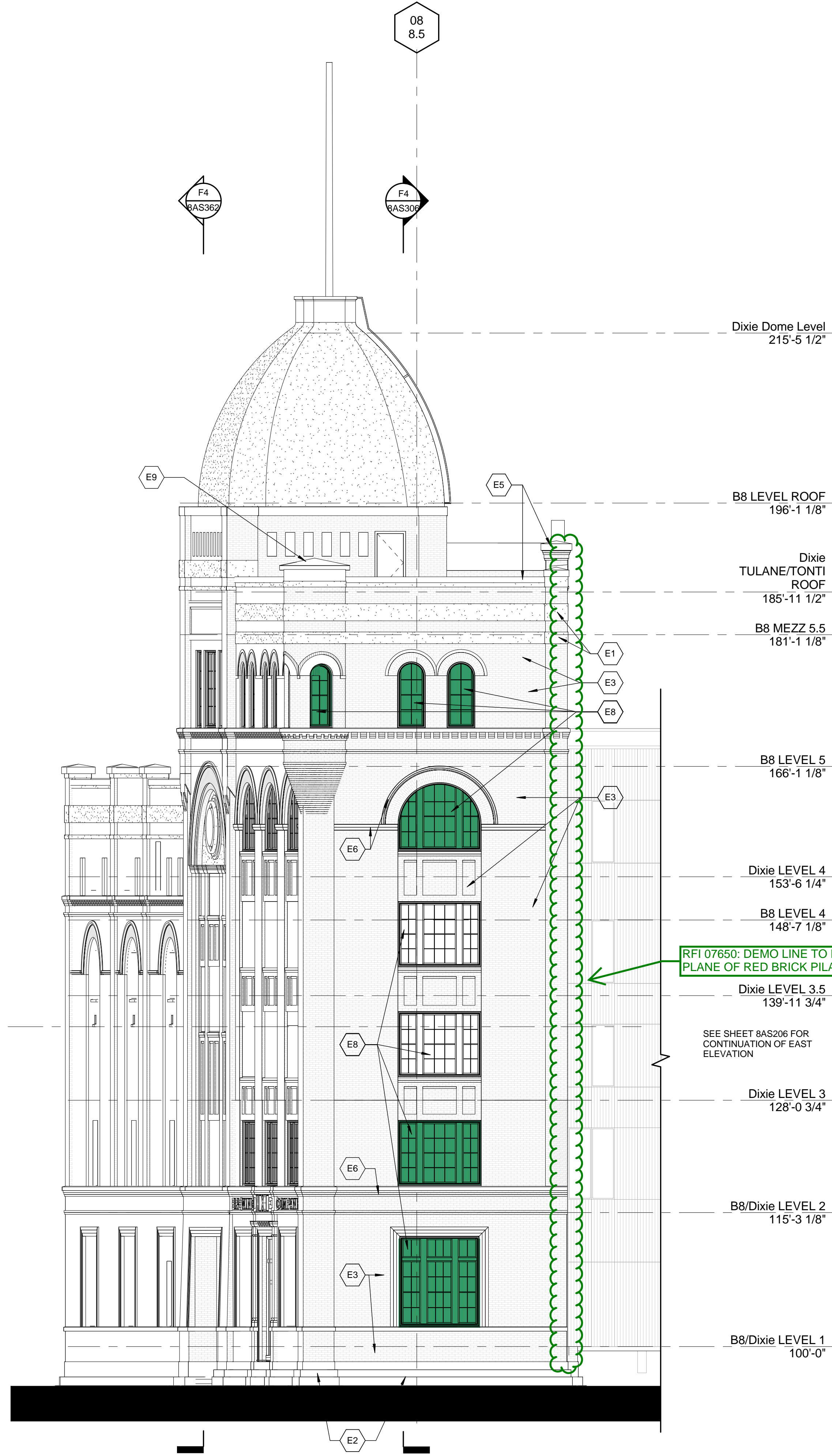
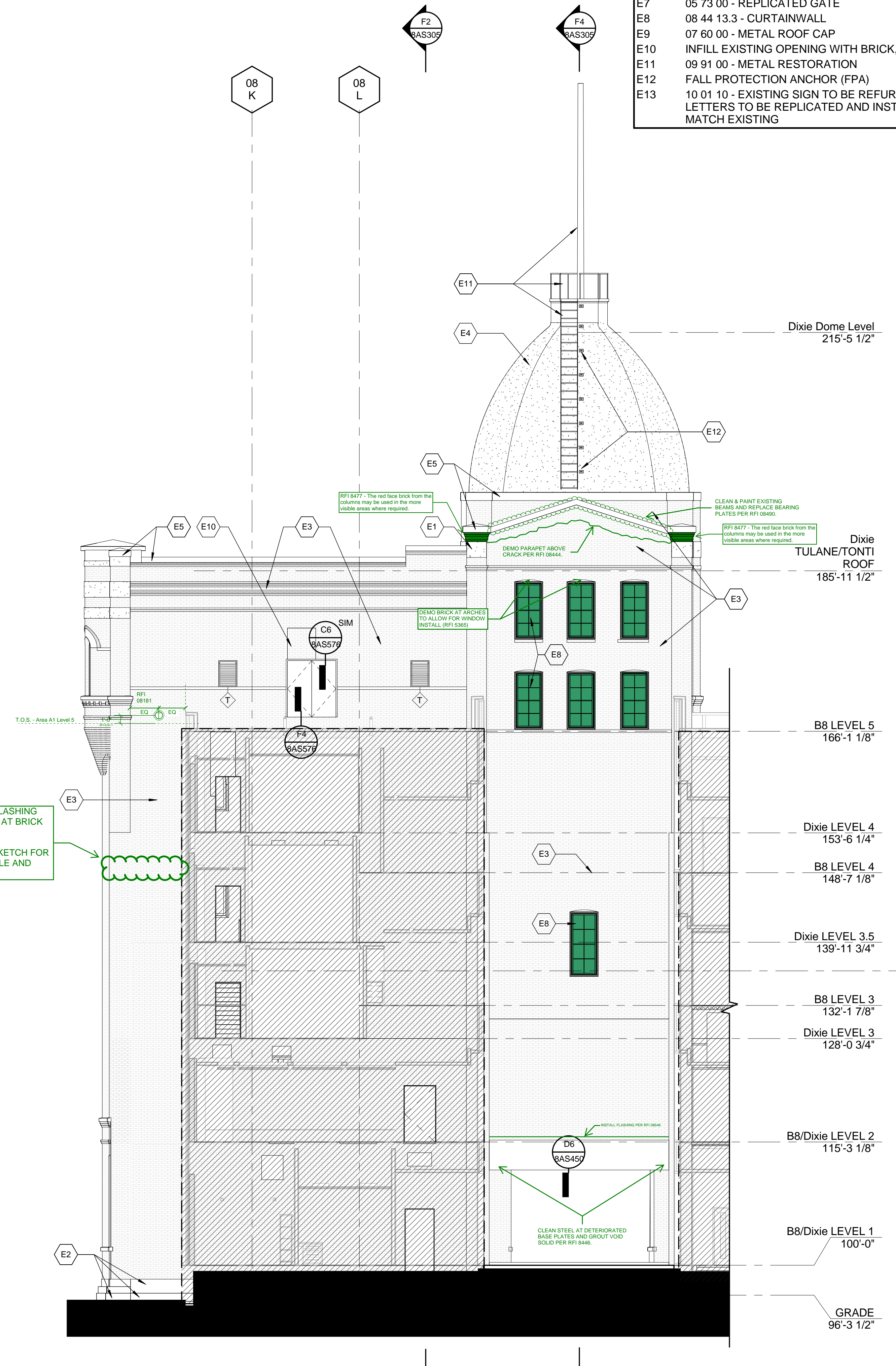


ELEVATION NOTES

E1	09 01 20 - REFURBISH EXISTING PLASTER & 09 91 00 - PAINT
E2	09 91 00 - PAINT
E3	04 20 00 - MASONRY CLEANING & GRAFFITI REMOVAL
E4	07 56 00 - FLUID-APPLIED ROOFING
E5	07 72 00 - METAL COPING OR PLASTER CAP WITH SPECIAL FINISH
E6	04 01 40 - STONE RESTORATION
E7	05 73 00 - REPLICATED GATE
E8	08 44 13.3 - CURTAINWALL
E9	07 60 00 - METAL ROOF CAP
E10	INFILL EXISTING OPENING WITH BRICK, REF. WP-9A
E11	09 91 00 - METAL RESTORATION
E12	FALL PROTECTION ANCHOR (FPA)
E13	10 01 10 - EXISTING SIGN TO BE REFURBISHED, MISSING LETTERS TO BE REPLICATED AND INSTALLED IN KIND TO MATCH EXISTING

INFILL WINDOW JAMBS AS DESCRIBED IN RFI 5706

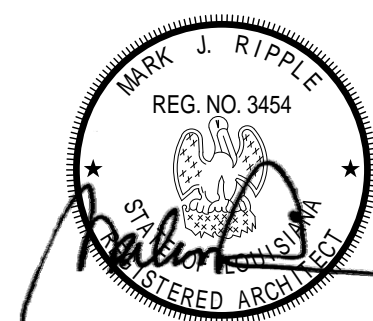
C6 DIXIE EAST DOME ELEVATION
1/8" = 1'-0"F6 DIXIE DOME WEST ELEVATION
1/8" = 1'-0"F5 DIXIE EAST ELEVATION
1/8" = 1'-0"F2 DIXIE NORTH ELEVATION
1/8" = 1'-0"

CONSULTANTS:

DESMAN ASSOCIATES / PARKING
CODE CONSULTANTS, INC / CODE CONSULTANT
THE SEXTANT GROUP / AV & ACOUSTICAL
HAMMER DESIGN ASSOCIATES / FOOD SERVICE
PYBURN & ODOM / ABATEMENT
TATA & HOWARD / TANK CONSULTANT
I.S.C. GROUP, INC / IRRIGATION
DAN EUSER WATER ARCHITECTURE, INC / WATER FEATURE

ARCHITECT/ENGINEERS:

studio **NOVA**
SCHRENK & PETERSON CONSULTING ENGINEERS / CIVIL
KORDA/NEMETH ENGINEERING / STRUCTURAL
BR+A CONSULTING ENGINEERS / MECH & ELEC
ARCHITECTURAL ENGINEERING / PLUMBING
SCALES ASSOCIATES / FIRE PROTECTION
COMMUNICATIONS DESIGN GROUP / LOW VOLTAGE

DRAWING TITLE
BLDG 8 DIXIE ELEVATIONS

APPROVED: PROJECT DIRECTOR

PROJECT TITLE
SLVHCS REPLACEMENT MEDICAL
CENTER PROJECTLOCATION
NEW ORLEANS, LOUISIANADATE
July 16, 2012CHECKED
CDDRAWN
DDPROJECT NUMBER
629-HS2-401
BUILDING NUMBER
8
DOCUMENT SET PACKAGE
WP_9BDRAWING NUMBER
8AS251OFFICE OF
CONSTRUCTION
AND FACILITIES
MANAGEMENT