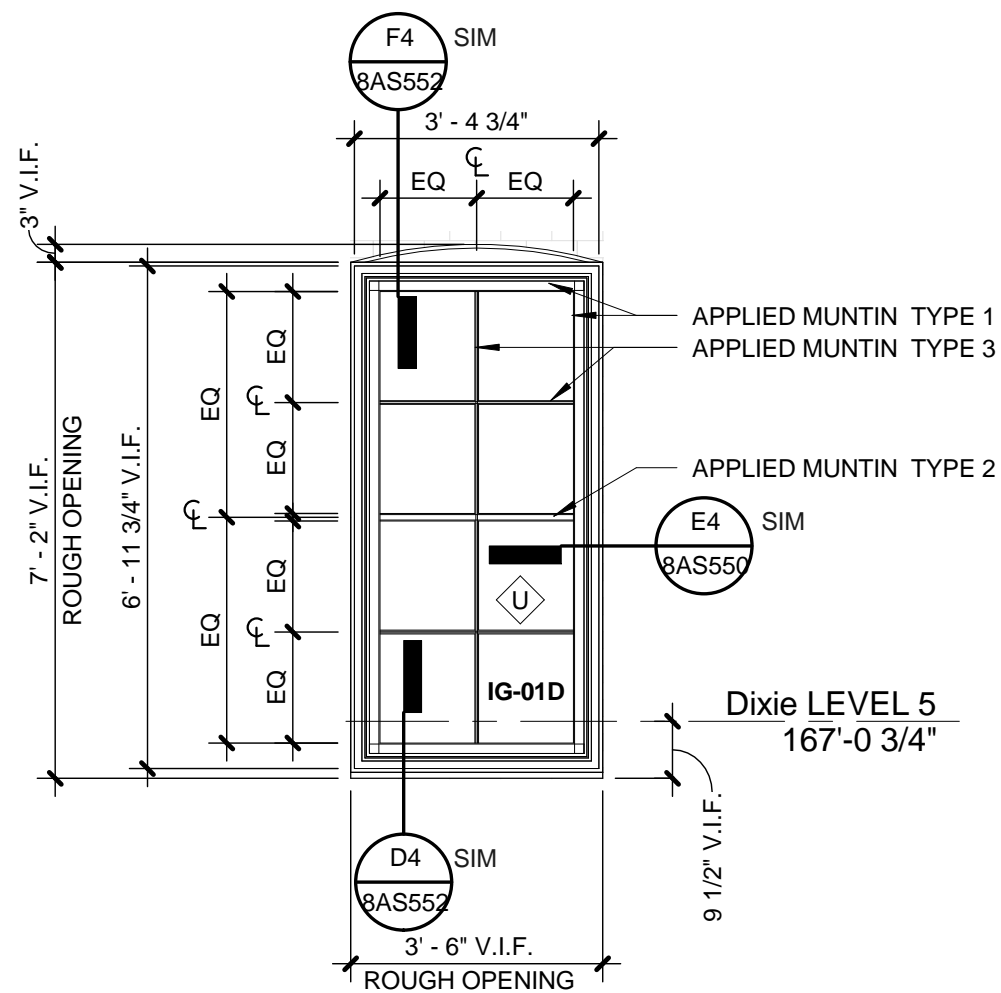


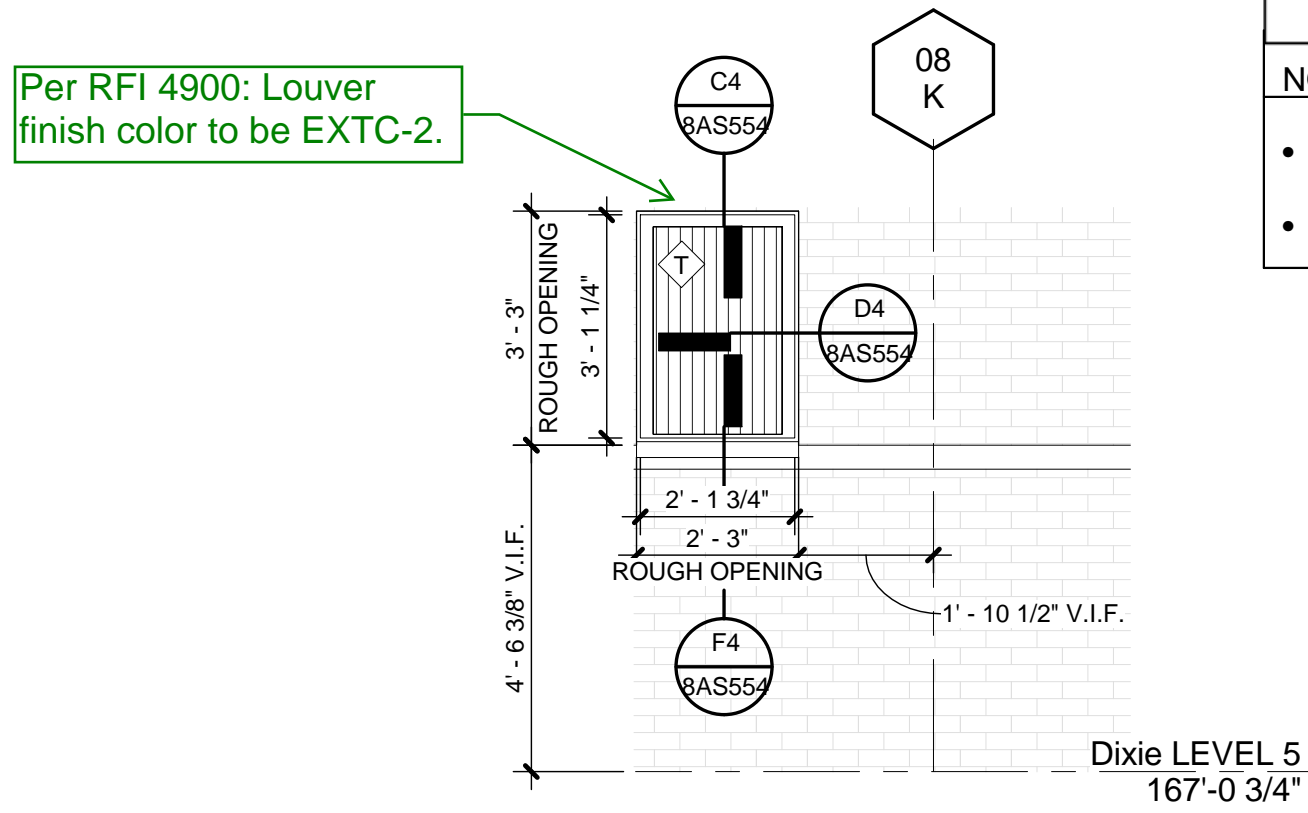
CLARIFICATION OF REFERENCE DESIGNATIONS FOR GLASS TYPES

IG-01D	INSULATED LAMINATED VISION IMPACT GLAZING (08 88 53)
IG-01TD	INSULATED LAMINATED VISION IMPACT SAFETY GLAZING (08 88 53)
SG-01D	INSULATED LAMINATED SPANDREL IMPACT GLAZING (08 88 53)
SLG-5	LAMINATED VISION IMPACT SAFETY GLAZING (08 88 53)

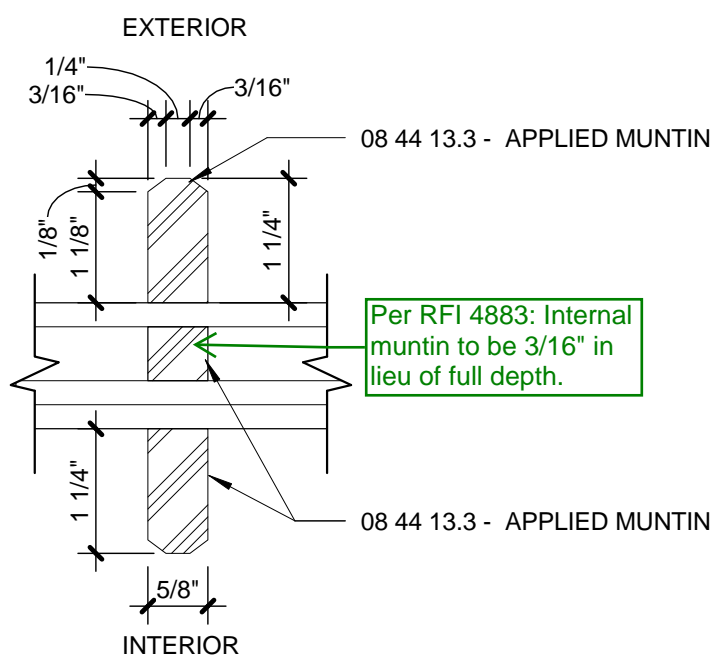
- NOTES:
- DIXIE INFILL WINDOW LOCATIONS NOTED ON FLOOR PLANS
 - MULLION AND APPLIED MUNTIN LOCATIONS TO MATCH EXISTING, V.I.F.



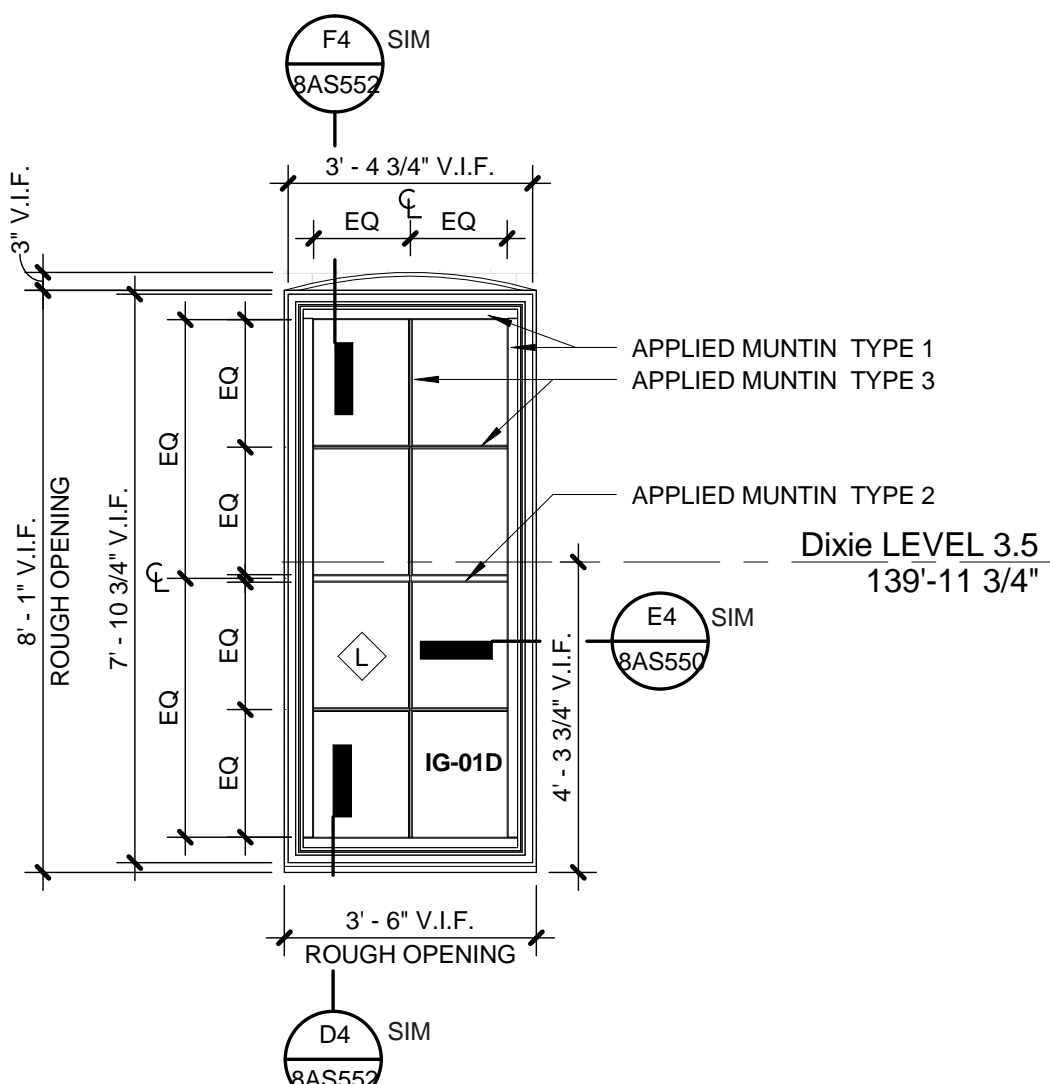
DIXIE REPLACEMENT WINDOW AT FIFTH FLOOR FACING NORTH
B3
SCALE: 3/8" = 1'-0"



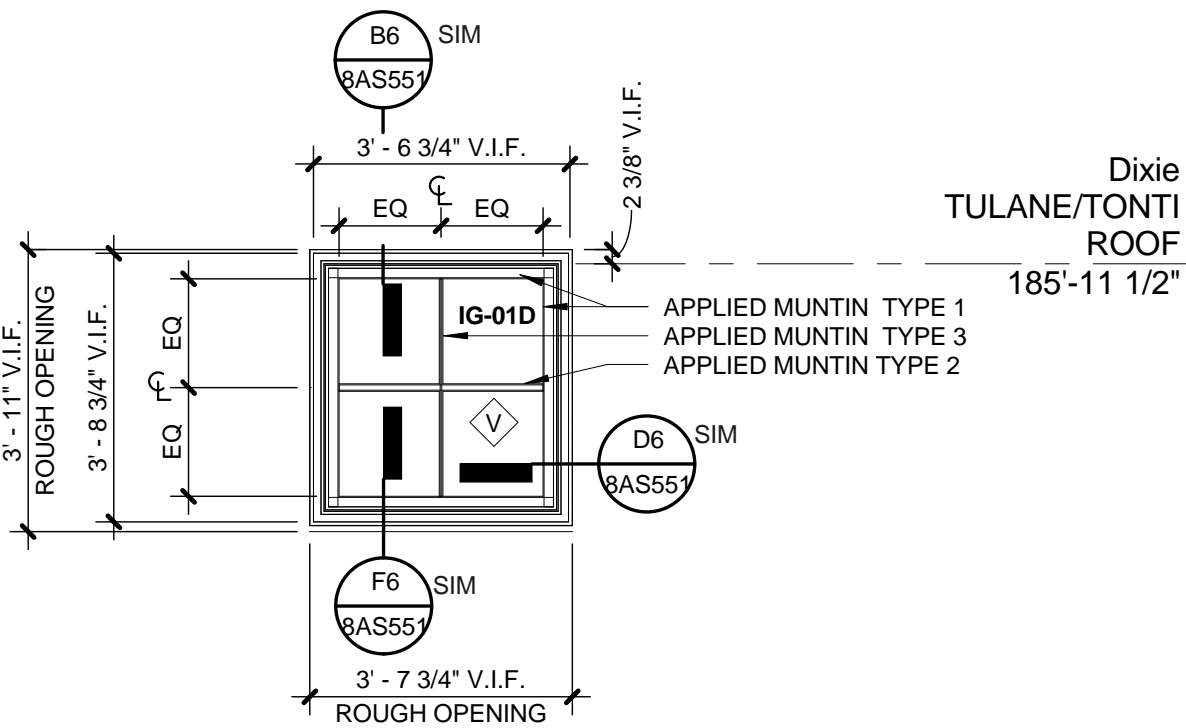
LOUVER AT DIXIE LEVEL 5
B2
SCALE: 3/8" = 1'-0"



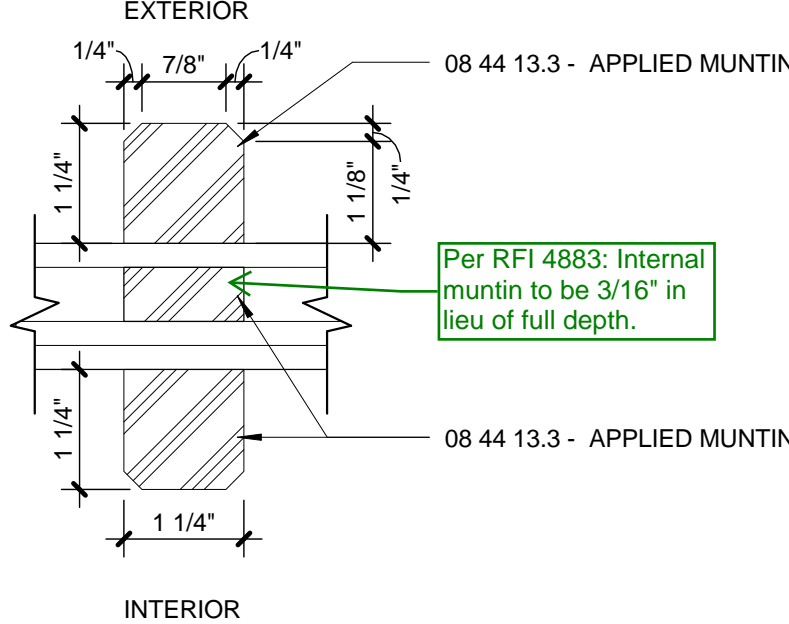
APPLIED MUNTIN PROFILE, TYPE 3
D5
SCALE: 6" = 1'-0"



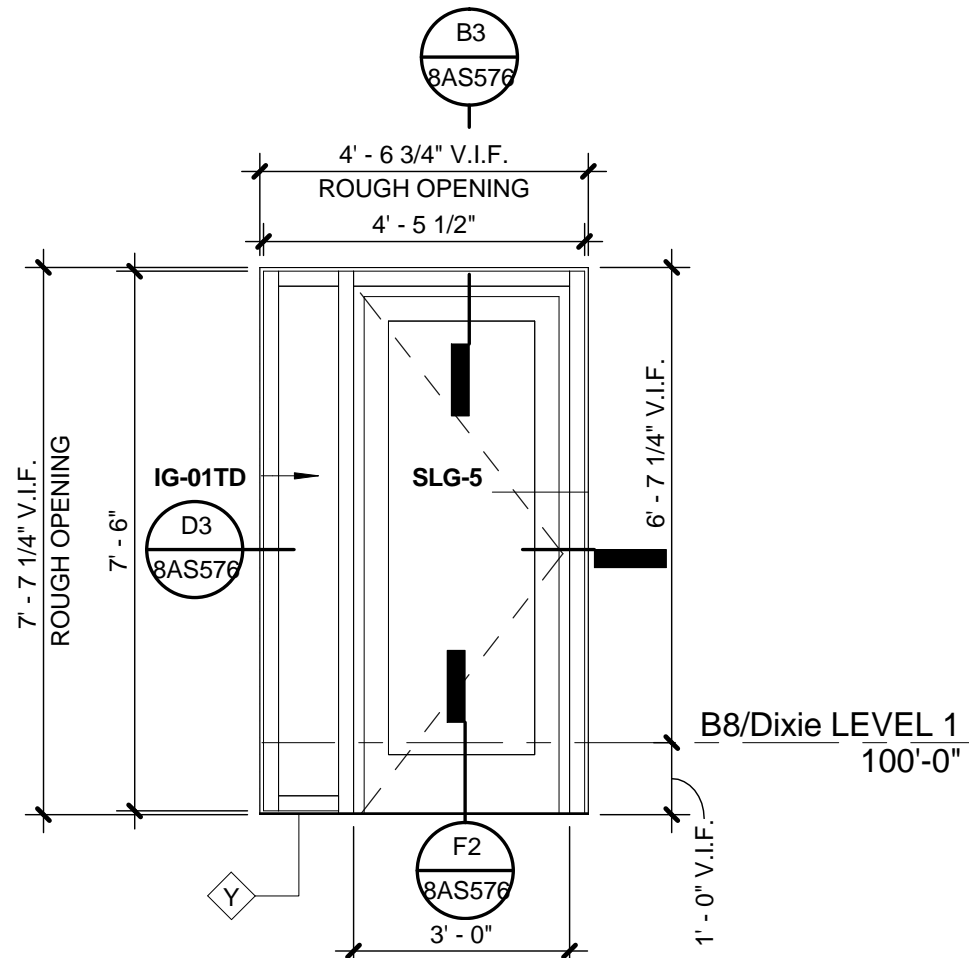
DIXIE REPLACEMENT WINDOW AT THIRD FLOOR FACING NORTH
D3
SCALE: 3/8" = 1'-0"



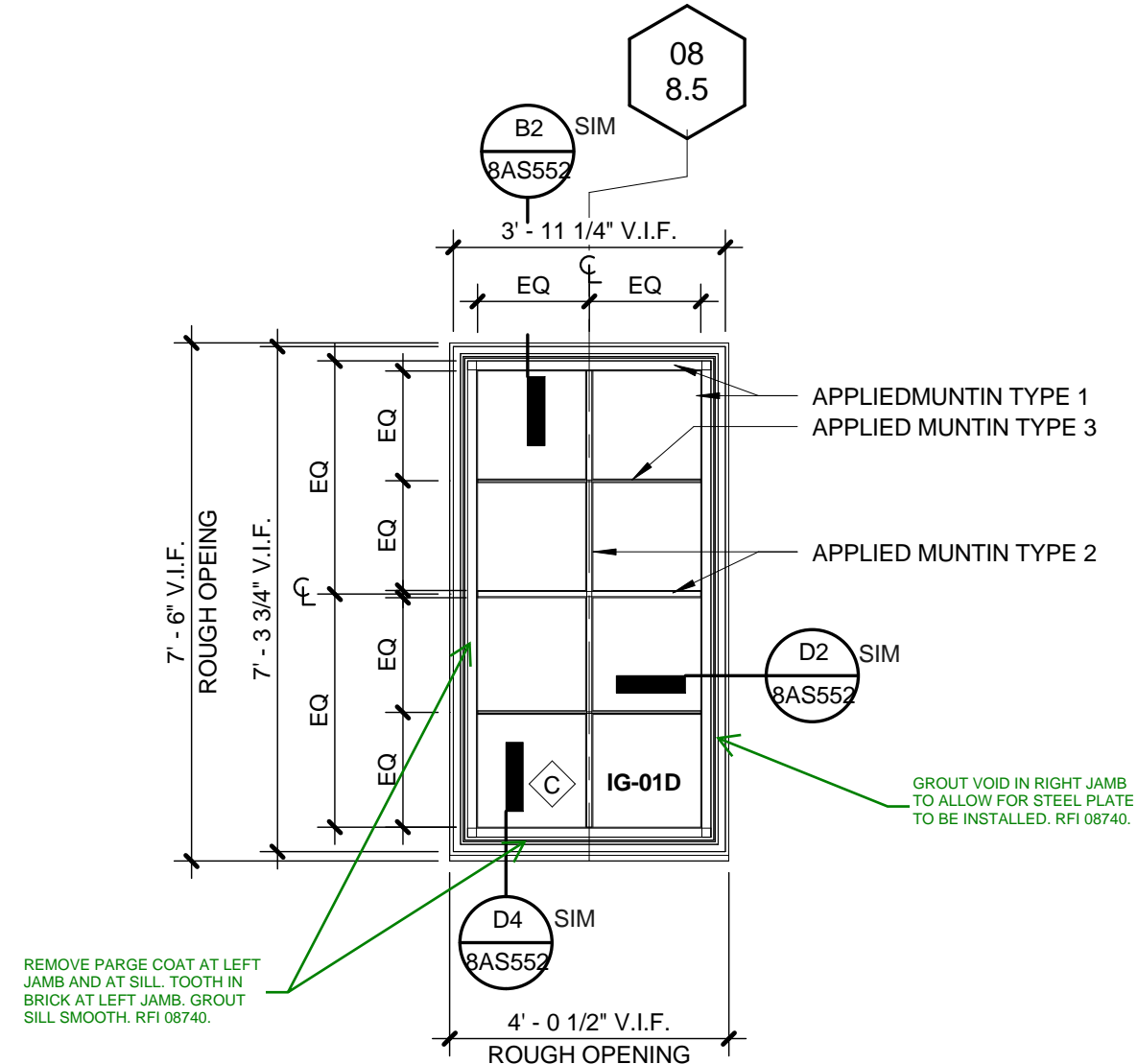
DIXIE INFILL WINDOW AT BASE OF DOME FACING WEST
D2
SCALE: 3/8" = 1'-0"



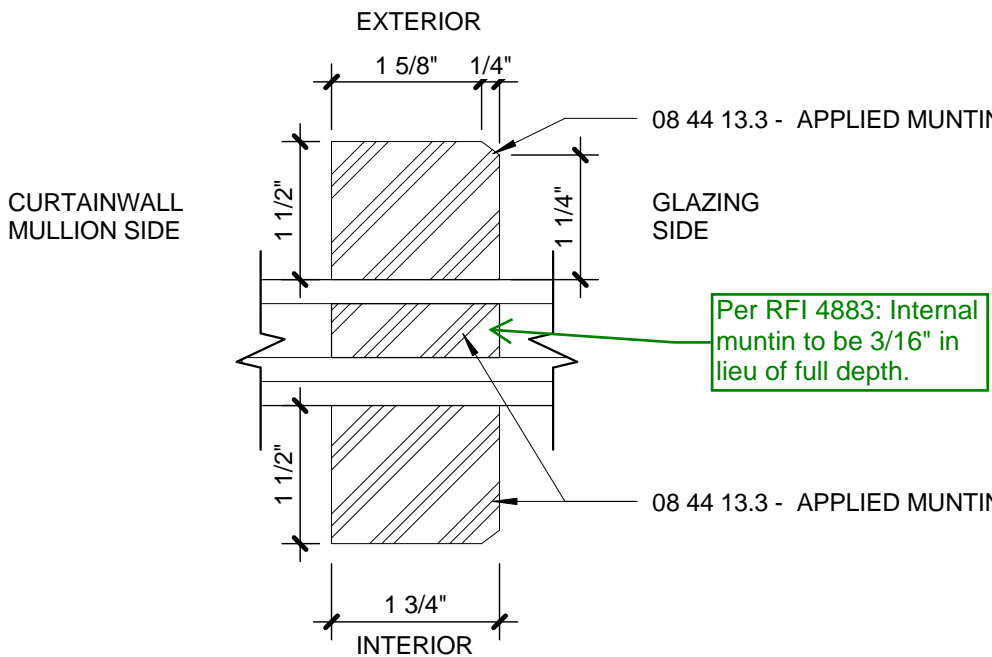
APPLIED MUNTIN PROFILE, TYPE 2
E5
SCALE: 6" = 1'-0"



DIXIE INFILL WINDOW AT CARRIAGEWAY EAST WALL 1
F3
SCALE: 3/8" = 1'-0"



DIXIE INFILL WINDOW AT CARRIAGEWAY EAST WALL
F2
SCALE: 3/8" = 1'-0"



APPLIED MUNTIN PROFILE, TYPE 1
F5
SCALE: 6" = 1'-0"

CONSULTANTS:

DESMAN ASSOCIATES / PARKING
CODE CONSULTANTS, INC / CODE CONSULTANT
THE SEXTANT GROUP / AV & ACOUSTICAL
HAMMER DESIGN ASSOCIATES / FOOD SERVICE
PYBURN & ODOM / ABATEMENT
TATA & HOWARD / TANK CONSULTANT
I.S.C. GROUP, INC / IRRIGATION
DAN EUSER WATER ARCHITECTURE, INC / WATER FEATURE

ARCHITECT/ENGINEERS:

studio **NOVA**
SCHRENK & PETERSON CONSULTING ENGINEERS / CIVIL
KORDA/NEMETH ENGINEERING / STRUCTURAL
BR+A CONSULTING ENGINEERS / MECH & ELEC
ARCHITECTURAL ENGINEERING / PLUMBING
SCALES ASSOCIATES / FIRE PROTECTION
COMMUNICATIONS DESIGN GROUP / LOW VOLTAGE

DRAWING TITLE
BLDG 8 DIXIE CURTAINWALL ELEVATIONS

APPROVED: PROJECT DIRECTOR

PROJECT TITLE
SLVHCS REPLACEMENT MEDICAL CENTER PROJECT

LOCATION
NEW ORLEANS, LOUISIANA

PROJECT NUMBER
629-HS2-401
BUILDING NUMBER
8
DOCUMENT SET PACKAGE
WP_9B

DRAWING NUMBER
8AS261

OFFICE OF
CONSTRUCTION
AND FACILITIES
MANAGEMENT

Department of
Veterans Affairs