

NEW CONSTRUCTION GRAPHICAL LEGEND

- EXISTING TO REMAIN
- NEW CONSTRUCTION

ONE INCH = FORTY FEET (1" = 40')

THREE INCHES = ONE FOOT

ONE AND ONE HALF INCHES = ONE FOOT

THREE QUARTERS INCH = ONE FOOT

ONE HALF INCH = ONE FOOT

ONE QUARTER INCH = ONE FOOT

ONE EIGHT INCH = ONE FOOT

ONE SIXTEENTH INCH = ONE FOOT

A

B

C

D

E

F

F

F

A

B

C

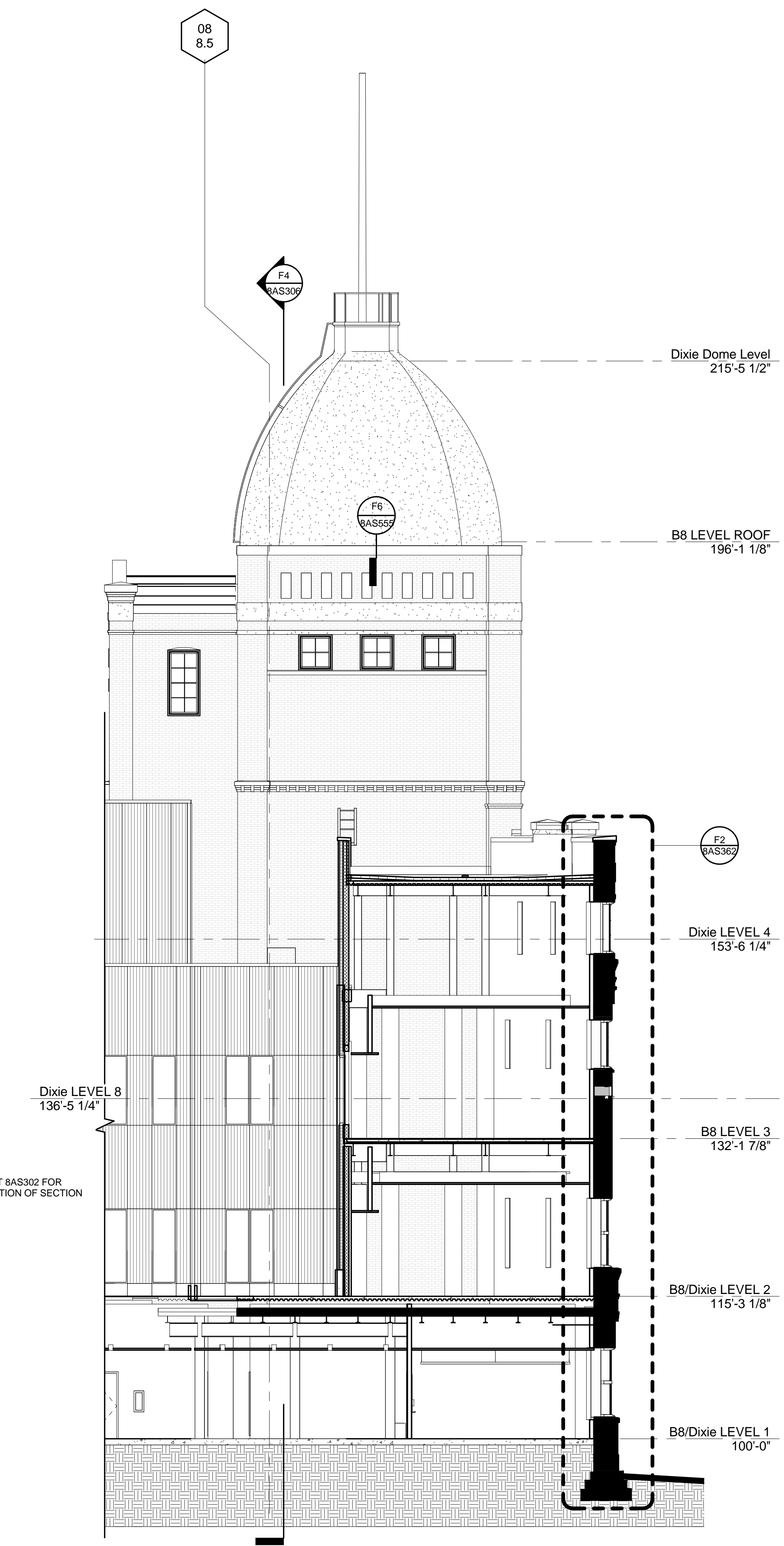
D

E

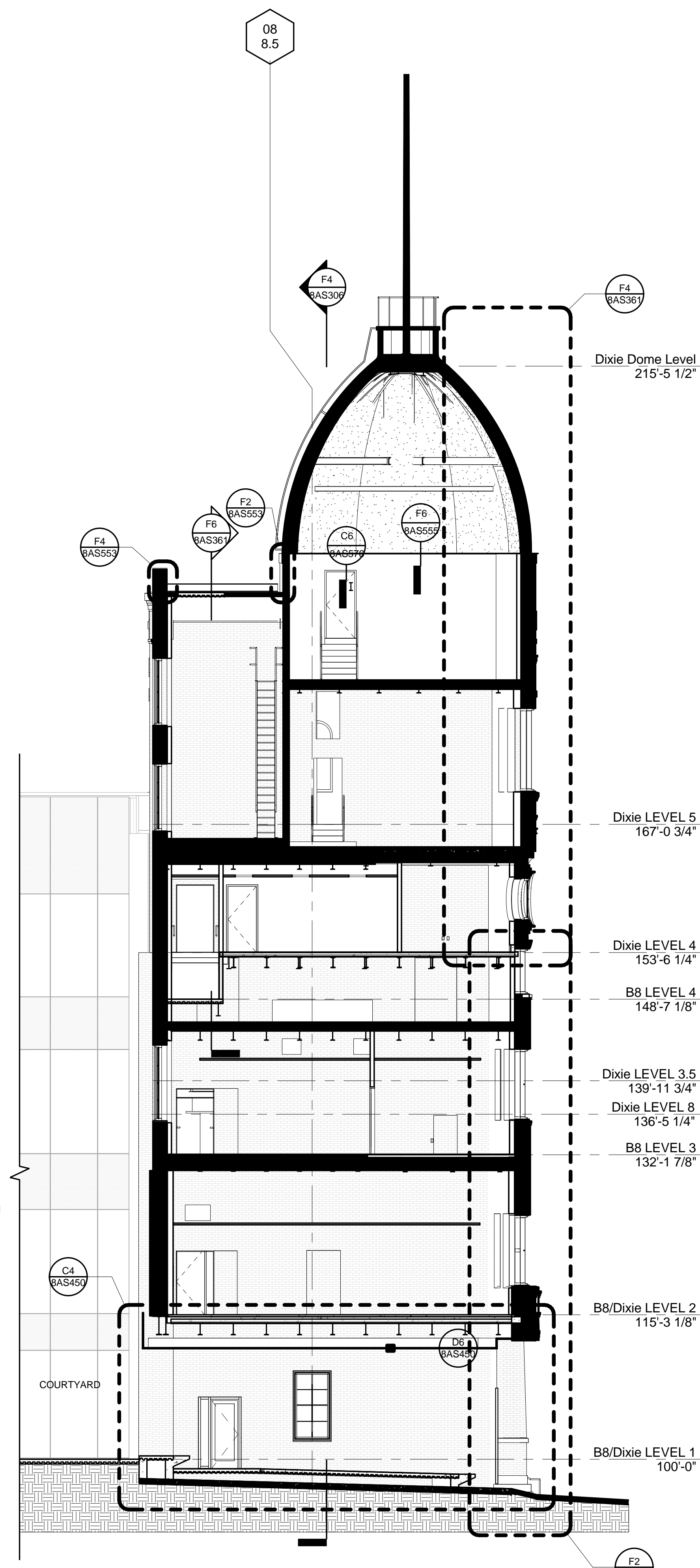
F

F

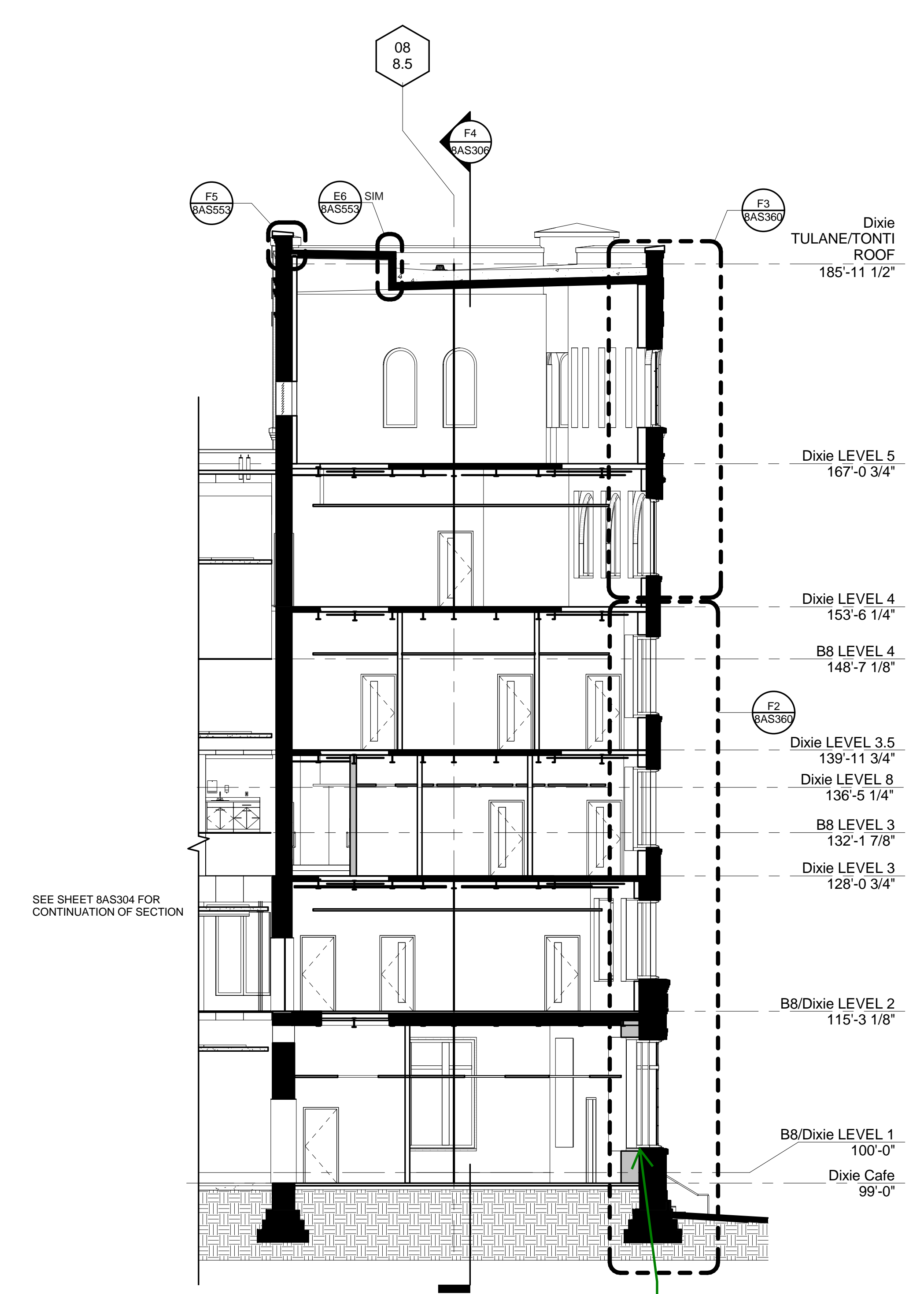
F



F6 TRANSVERSE SECTION AT COL. N  
1/8" = 1'-0"



F4 TRANSVERSE SECTION  
1/8" = 1'-0"



F2 TRANSVERSE SECTION AT COL. L  
1/8" = 1'-0"

GROUT CW SILL UP TO 2" TO MAKE CW LEVEL WITH EXTERIOR STONE SILL (RF1 4924.1)

CONSULTANTS:

DESMAN ASSOCIATES / PARKING  
CODE CONSULTANTS, INC / CODE CONSULTANT  
THE SEXTANT GROUP / AV & ACOUSTICAL  
HAMMER DESIGN ASSOCIATES / FOOD SERVICE  
PYBURN & ODOM / ABATEMENT  
TATA & HOWARD / TANK CONSULTANT  
I.S.C. GROUP, INC / IRRIGATION  
DAN EUSER WATER ARCHITECTURE, INC / WATER FEATURE

ARCHITECT/ENGINEERS:

studio **NOVA**  
SCHRENK & PETERSON CONSULTING ENGINEERS / CIVIL  
KORDA/NEMETH ENGINEERING / STRUCTURAL  
BR+A CONSULTING ENGINEERS / MECH & ELEC  
ARCHITECTURAL ENGINEERING / PLUMBING  
SCALES ASSOCIATES / FIRE PROTECTION  
COMMUNICATIONS DESIGN GROUP / LOW VOLTAGE



DRAWING TITLE  
BLDG 8 BUILDING SECTIONS THRU DIXIE BUILDING

APPROVED: PROJECT DIRECTOR  
*John J. Sanchez*

PROJECT TITLE  
SLVHCS REPLACEMENT MEDICAL CENTER PROJECT

LOCATION  
NEW ORLEANS, LOUISIANA  
DATE  
July 16, 2012

PROJECT NUMBER  
629-HS2-401  
DOCUMENT SET PACKAGE  
WP\_9B

DRAWING NUMBER  
**8AS305**

OFFICE OF  
CONSTRUCTION  
AND FACILITIES  
MANAGEMENT

