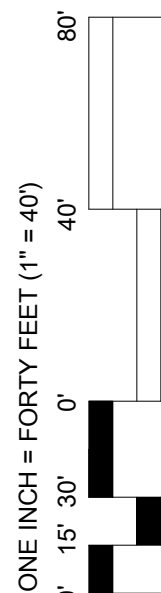


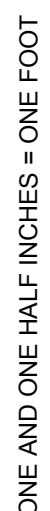
FOR CLARITY OF DETAILING CONNECTIONS, FIREPROOFING ON STRUCTURAL STEEL MEMBERS IS NOT SHOWN ON WALL SECTIONS AND MISCELLANEOUS DETAILS. REFER TO SECTION 07 81 00.

GRAPHICAL LEGEND

☐ EXISTING TO REMAIN



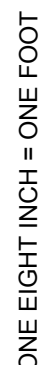
THREE INCHES = ONE FOOT



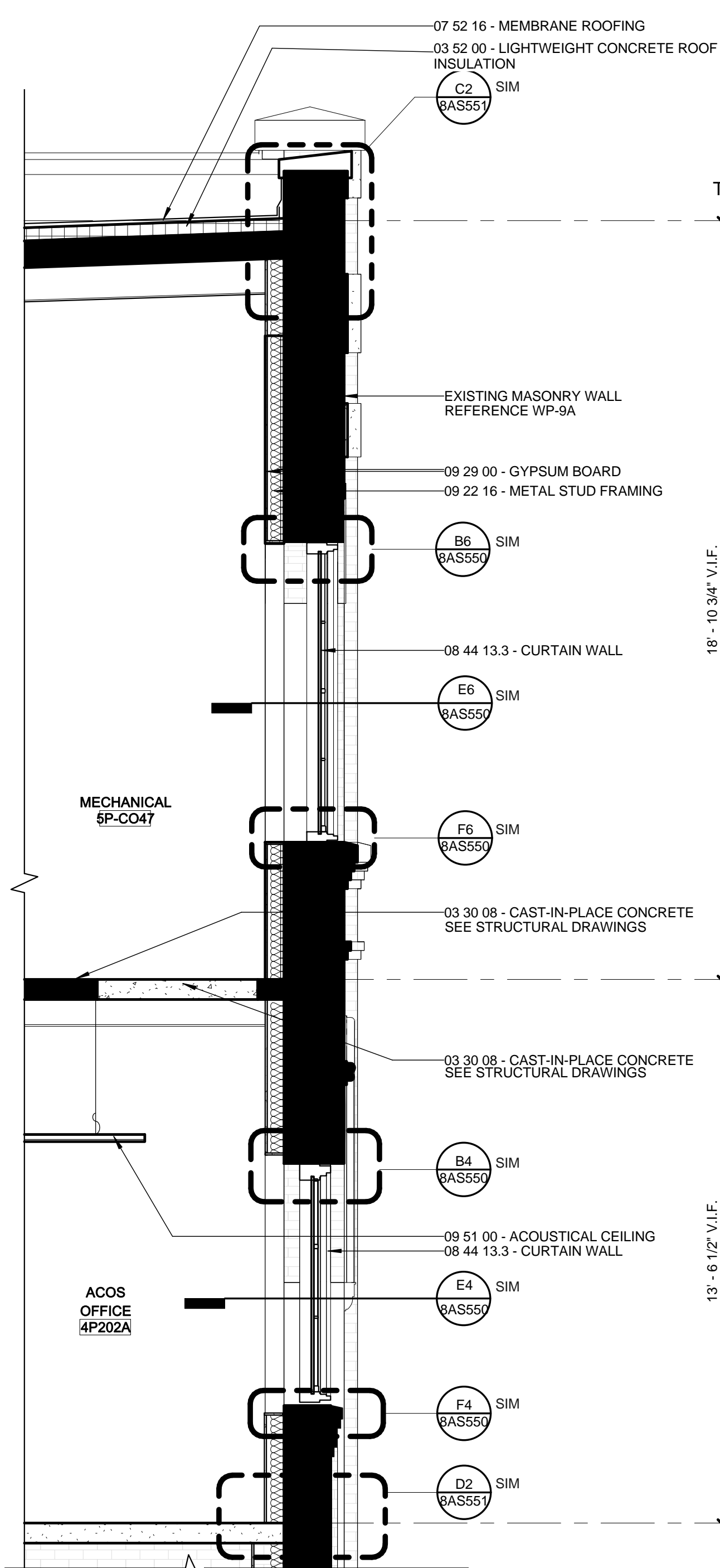
THREE QUARTERS INCH = ONE FOOT



ONE QUARTER INCH = ONE FOOT



ONE SIXTEENTH INCH = ONE FOOT



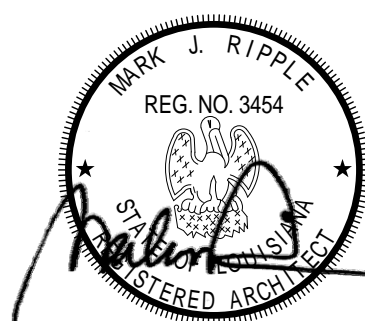
SECTION AT TULANE TONTI CORNER FROM LEVEL 4 TO
ROOF LOOKING NORTH

SCALE: 3/8" = 1'-0"

REVISIONS:
DATE

CONSULTANTS:

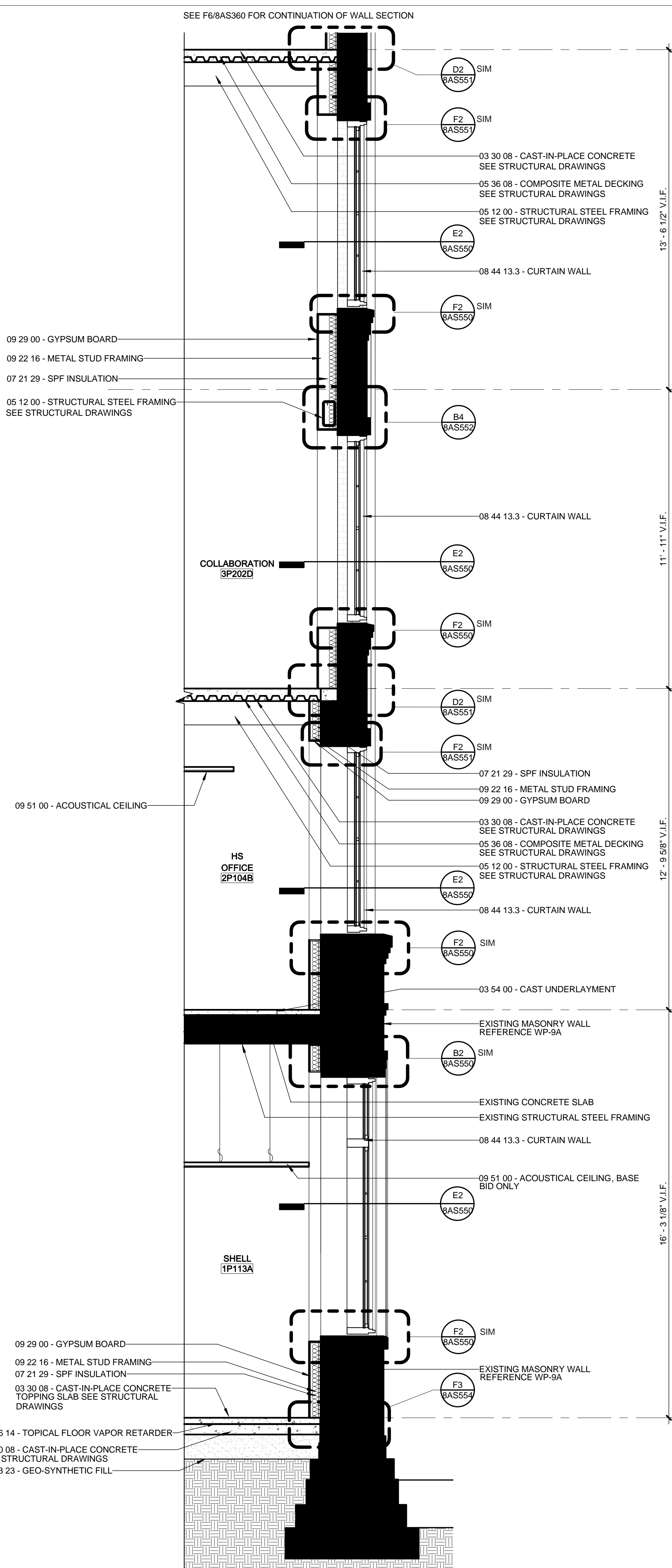
DESMAN ASSOCIATES / PARKING
CODE CONSULTANTS, INC / CODE CONSULTANT
THE SEXTANT GROUP / AV & ACoustICAL
HAMMER DESIGN ASSOCIATES / FOOD SERVICE
PYBURN & ODOM / ABATEMENT
TATA & HOWARD / TANK CONSULTANT
I.S.C. GROUP, INC / IRRIGATION
DAN EUSER WATER ARCHITECTURE, INC / WATER FEATURE



ARCHITECT/ENGINEERS:

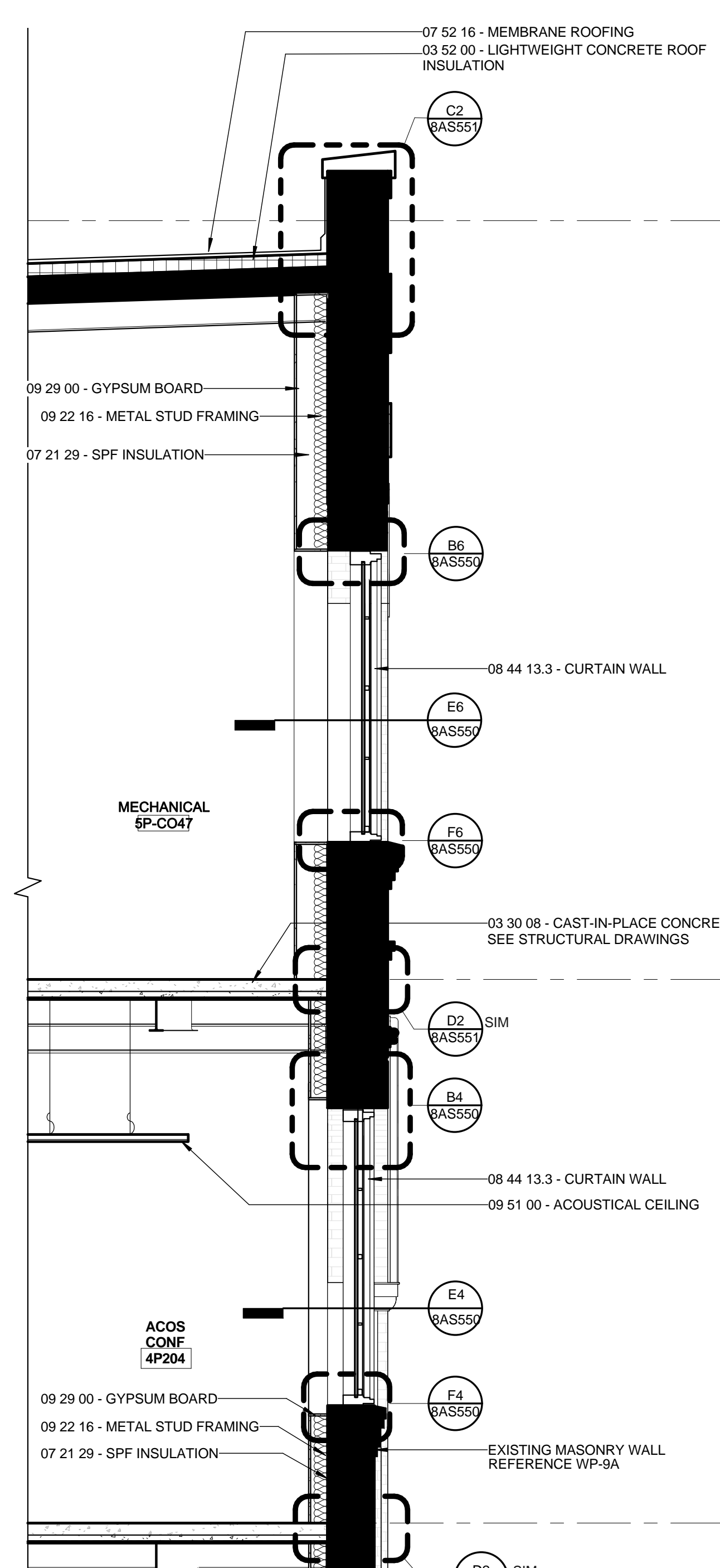
studio **NOVA**

SCHRENK & PETERSON CONSULTING ENGINEERS / CIVIL
KORDA/NEMETH ENGINEERING / STRUCTURAL
BR+A CONSULTING ENGINEERS / MECH & ELEC
ARCHITECTURAL ENGINEERING / PLUMBING
SCALES ASSOCIATES / FIRE PROTECTION
COMMUNICATIONS DESIGN GROUP / LOW VOLTAGE



SECTION AT TULANE TONTI CORNER FROM LEVEL 1 THRU
4 LOOKING NORTH

F5 SCALE: 3



SECTION AT TULANE TONTI CORNER FROM LEVEL 4 TO
ROOF LOOKING EAST

F3 SCALE: 3

DRAWING TITLE

BLDG 8 DIXIE WALL SECTIONS

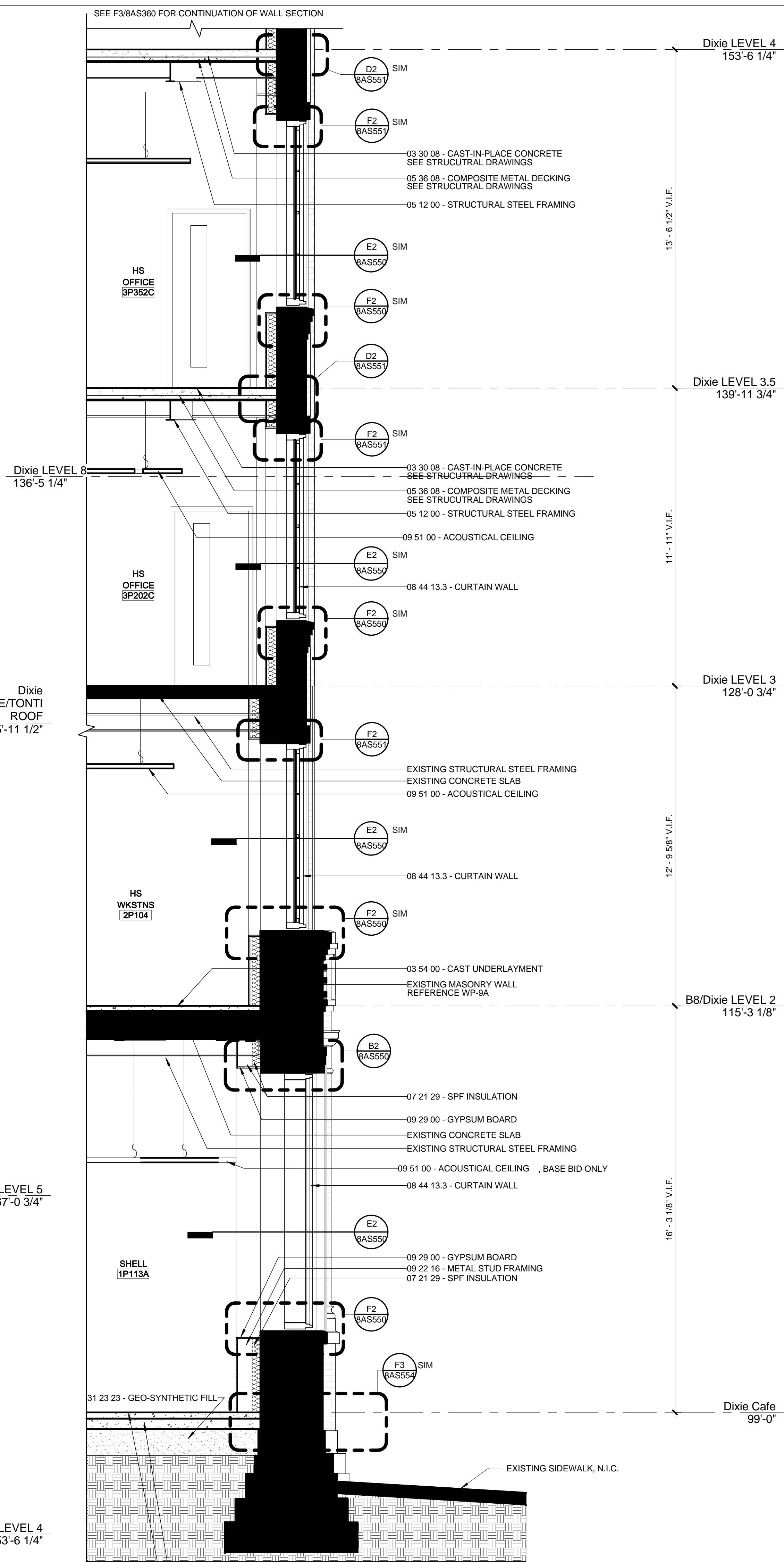
APPROVED: PROJECT DIRECTOR

Jedd Sanders

PROJECT TITLE		
SLVHCS REPLACEMENT MEDICAL CENTER PROJECT		
LOCATION		
NEW ORLEANS, LOUISIANA		
DATE	CHECKED	DRAWN
July 16, 2012	CD	DD

PROJECT NUMBER	BUILDING NUMBER
629-HS2-401	8
DOCUMENT SET PACKAGE	
WP_9B	
DRAWING NUMBER	
8AS360	

OFFICE OF
CONSTRUCTION
AND FACILITIES
MANAGEMENT



SECTION AT TULANE TONTI CORNER FROM LEVEL 1 THRU
4 LOOKING EAST

F2 SCALE: 3

CONSTRUCTION DOCUMENTS 1
FULLY SPRINKLERED