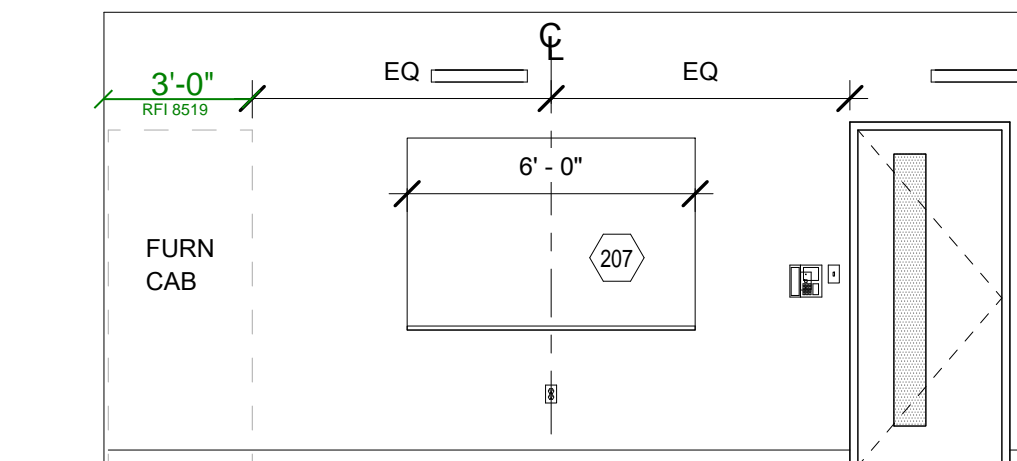
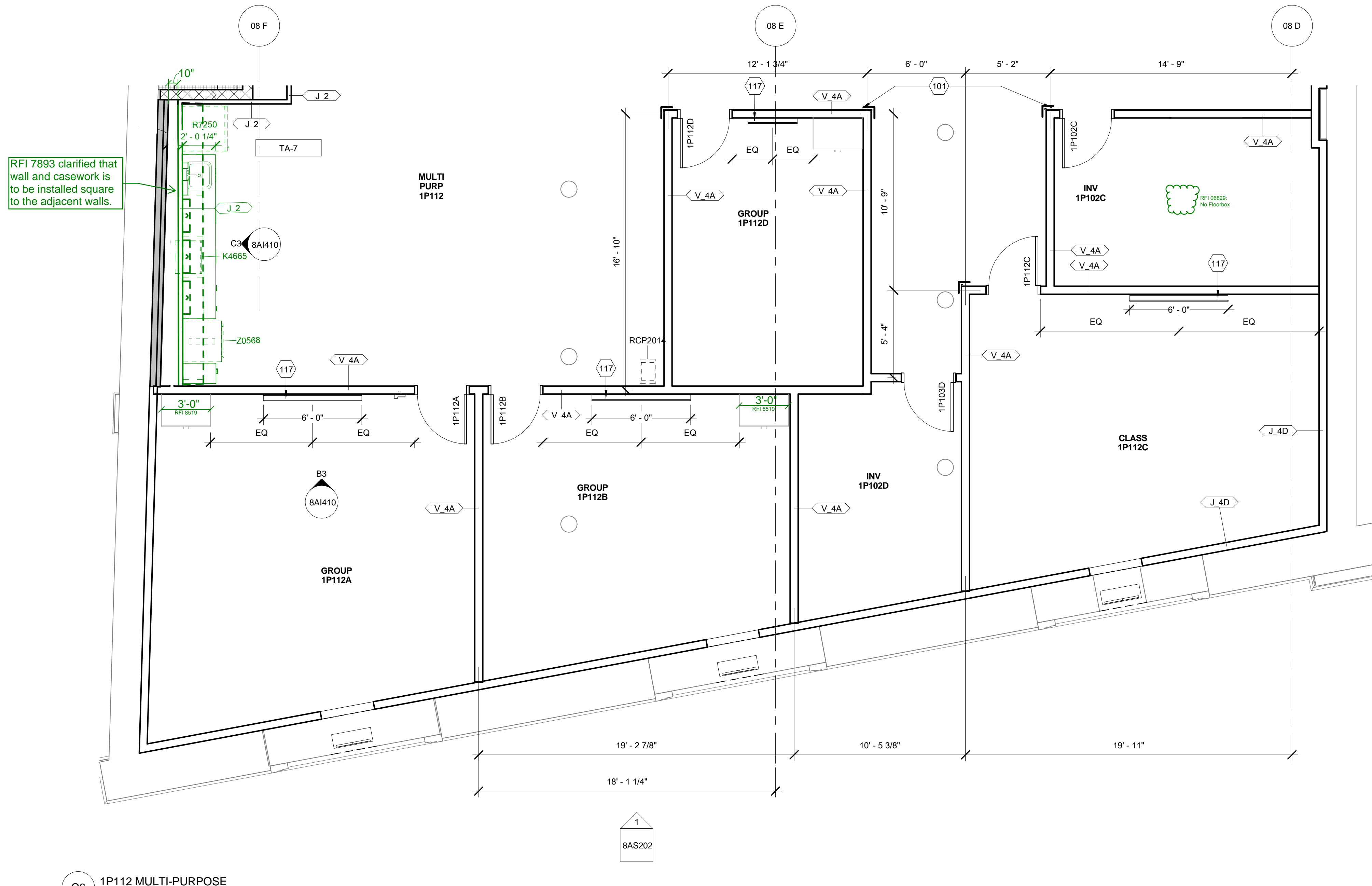
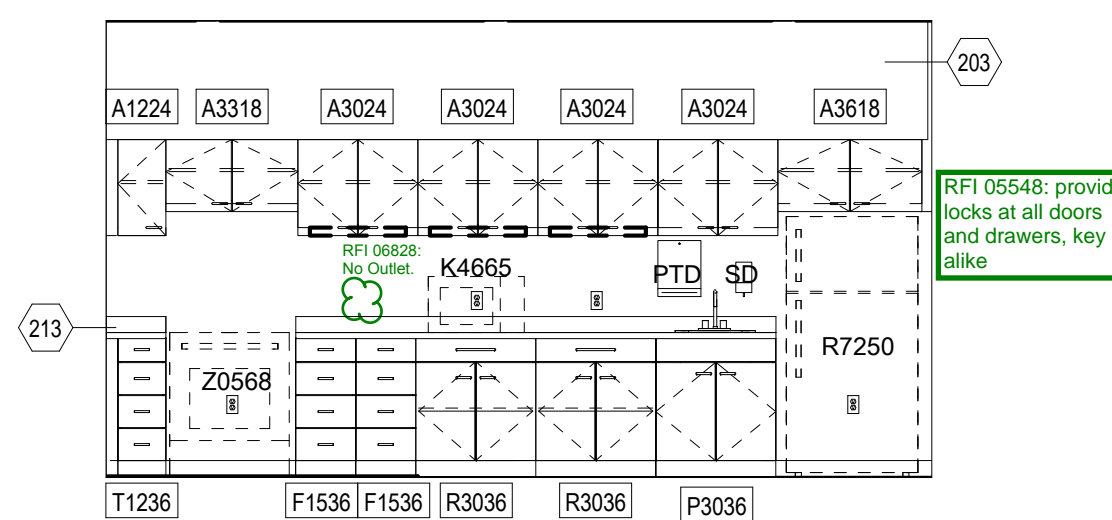


## LEVEL - 01 AREA - P

REFERENCE SHEET 8A1002 FOR PARTITION TYPE SCHEDULE  
AND CODED NOTES  
REFERENCE SHEET 8A1400 FOR RCP GENERAL NOTES AND CODED NOTES  
REFERENCE SHEET 8A1200 FOR TYPICAL MOUNTING HEIGHTS  
REFERENCE SHEET 8A1201 FOR GRAPHIC LEGEND OF WALL DEVICES

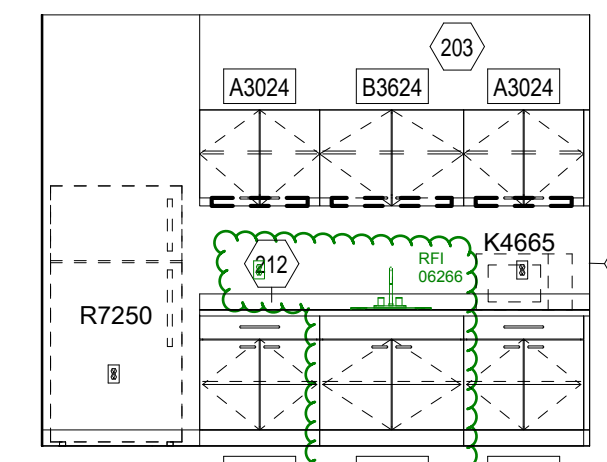
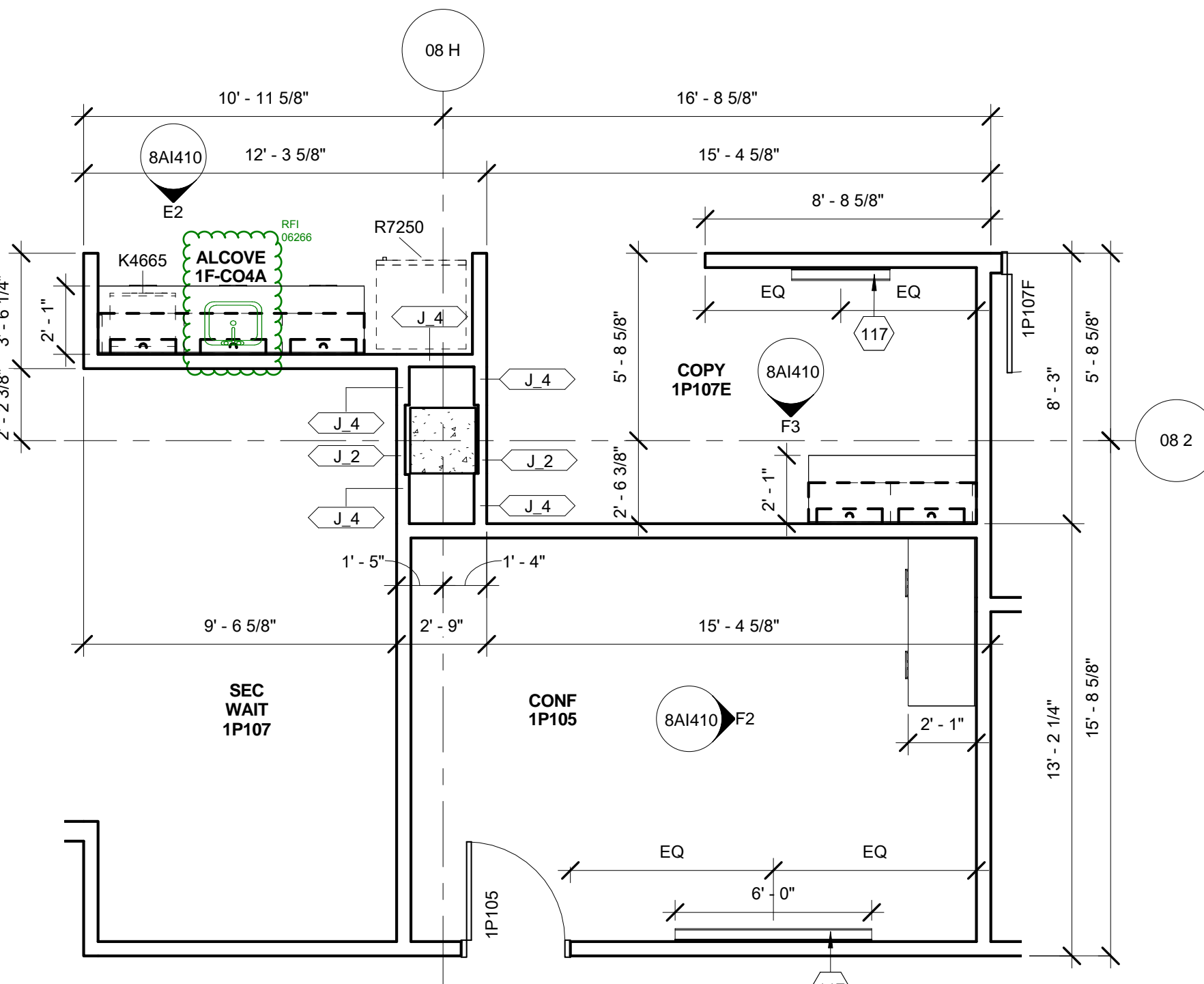


B3 GROUP 1P112A - N  
1/4" = 1'-0"

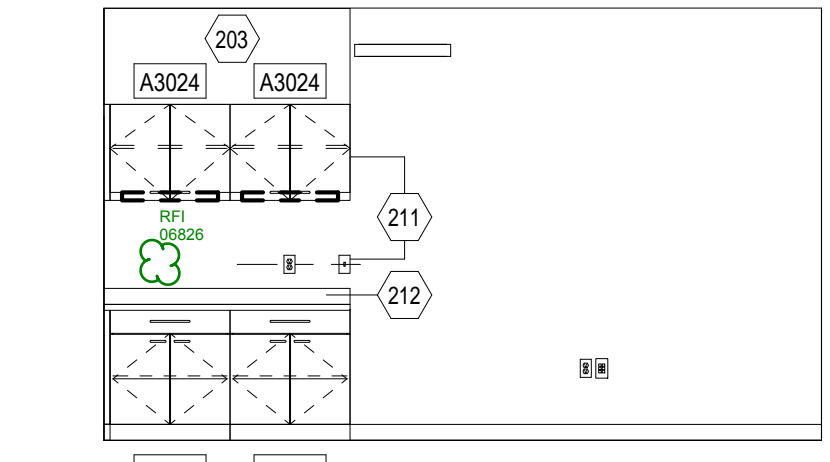


C3 1P112 MULTI-PURPOSE - W  
1/4" = 1'-0"

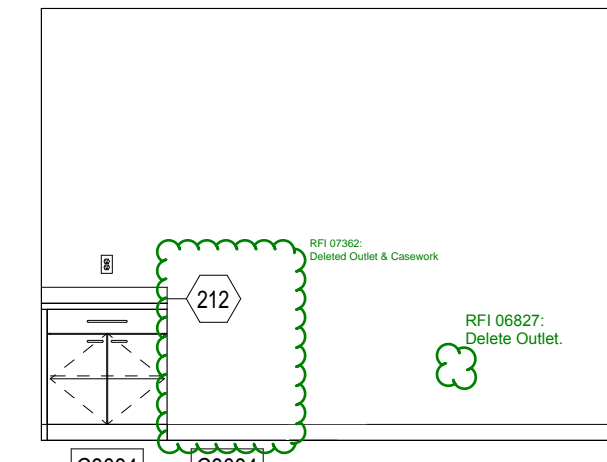
C6 1P112 MULTI-PURPOSE  
1/4" = 1'-0"



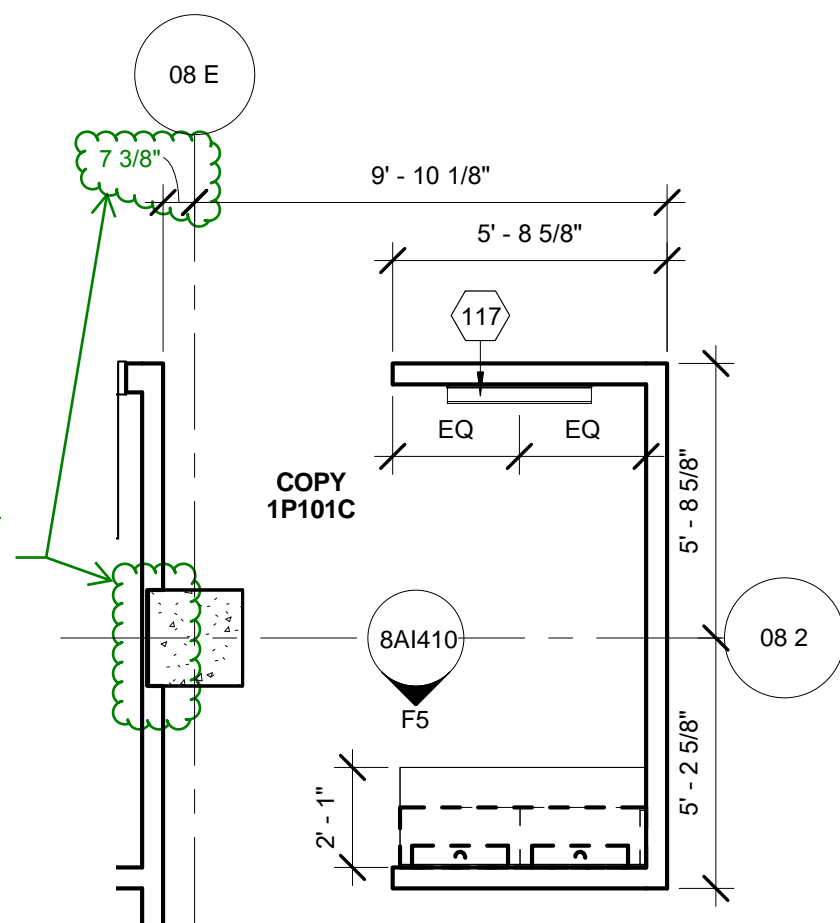
E2 1F-CO4A ALCOVE - S  
1/4" = 1'-0"



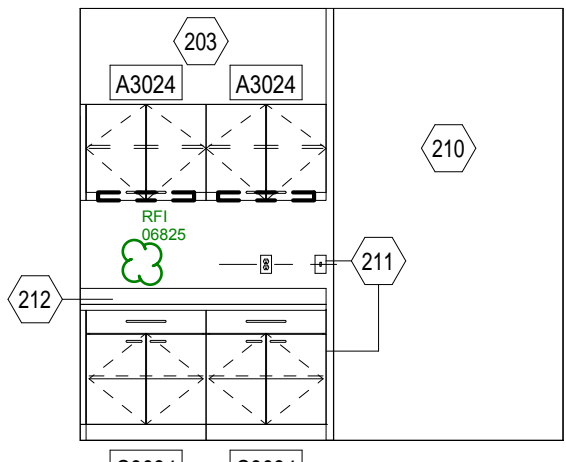
F3 1P107E COPY - S  
1/4" = 1'-0"



F2 1P105 CONF - E  
1/4" = 1'-0"



F6 1P101C COPY  
1/4" = 1'-0"



F5 1P101C COPY - S  
1/4" = 1'-0"

F4 1F-CO4A ALCOVE/1P107E COPY/1F105 CONF  
1/4" = 1'-0"

## CONSULTANTS:

DESMAN ASSOCIATES / PARKING  
CODE CONSULTANTS, INC. / CODE CONSULTANT  
THE SEXTANT GROUP / AV & ACOUSTICAL  
HAMMER DESIGN ASSOCIATES / FOOD SERVICE  
PYBURN & ODOM / ABATEMENT  
TATA & HOWARD / TANK CONSULTANT  
I.S.C. GROUP, INC. / IRRIGATION  
DAN EUSER WATER ARCHITECTURE, INC. / WATER FEATURE

## ARCHITECT/ENGINEERS:

studio **NOVA**  
SCHRENK & PETERSON CONSULTING ENGINEERS / CIVIL  
KORDA/NEMETH ENGINEERING / STRUCTURAL  
BR+A CONSULTING ENGINEERS / MECH, ELECT, PLUMBING, LOW VOLTAGE  
ARCHITECTURAL ENGINEERING / PLUMBING  
SCALES ASSOCIATES / FIRE PROTECTION

DRAWING TITLE  
BLDG 8 LEVEL 1 ENLARGED VIEWS

APPROVED: PROJECT DIRECTOR

*John J. Sanders*

PROJECT TITLE  
SLVHCS REPLACEMENT MEDICAL  
CENTER PROJECT

LOCATION  
NEW ORLEANS, LOUISIANA

DATE  
July 16, 2012

CHECKED  
SG

DRAWN  
JD/SG

PROJECT NUMBER  
100342.00

BUILDING NUMBER  
08

DOCUMENT SET PACKAGE  
WP\_09B

DRAWING NUMBER

8A1410

OFFICE OF  
CONSTRUCTION  
AND FACILITIES  
MANAGEMENT

Department of  
Veterans Affairs