

ONE INCH = FORTY FEET (1"=40')

THREE INCHES = ONE FOOT

ONE AND ONE HALF INCHES = ONE FOOT

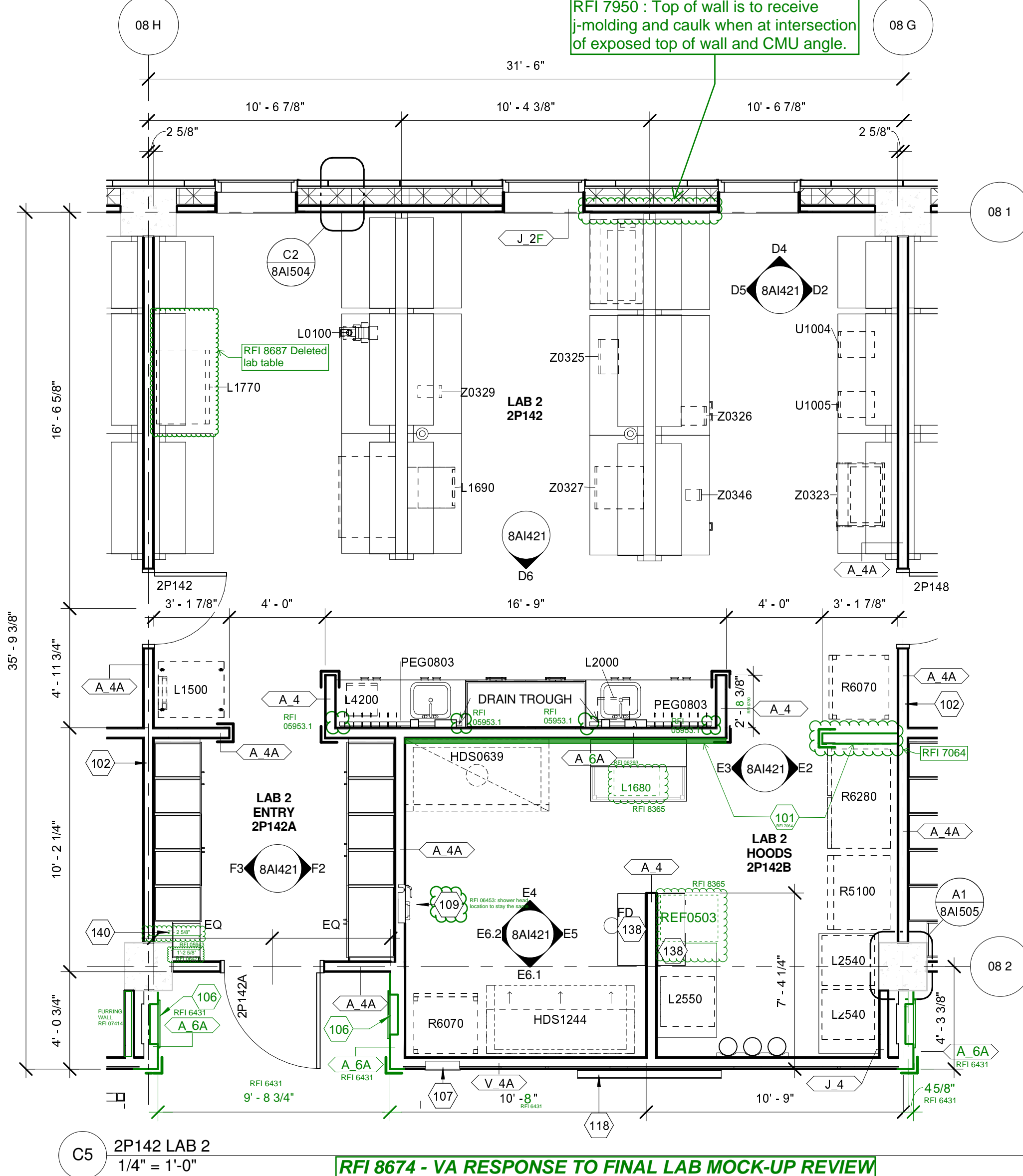
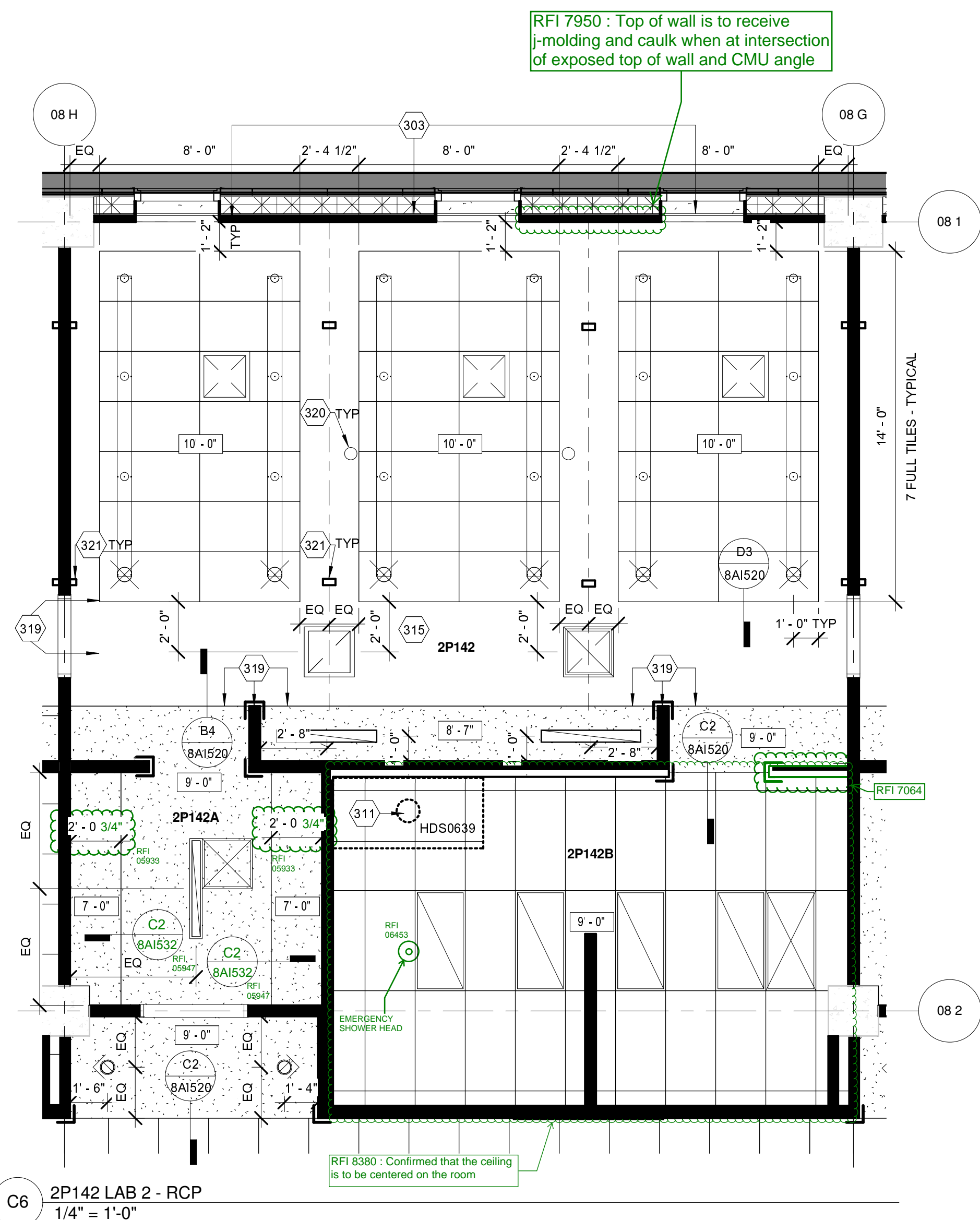
THREE QUARTERS INCH = ONE FOOT

ONE HALF INCH = ONE FOOT

ONE QUARTER INCH = ONE FOOT

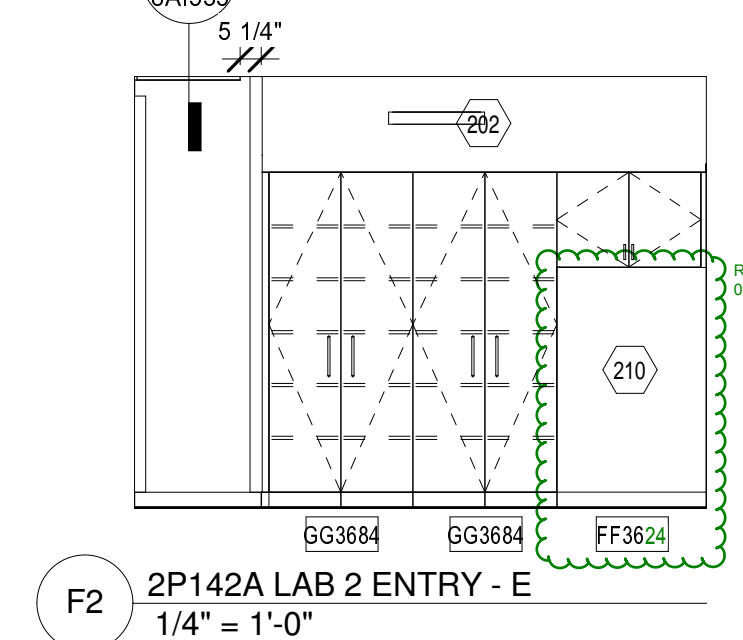
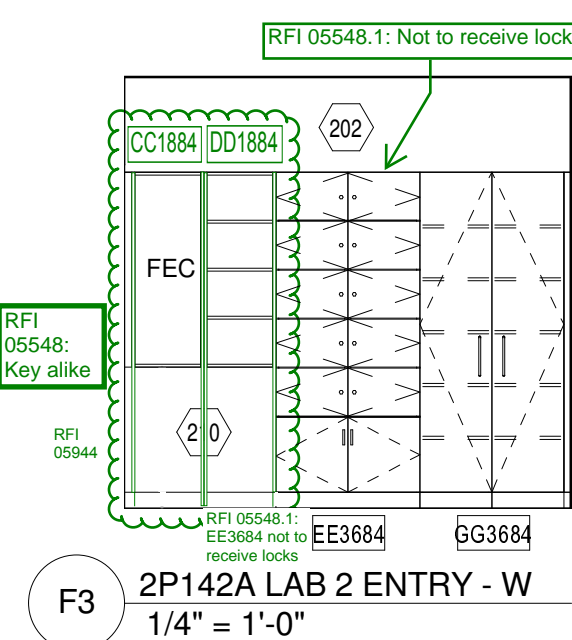
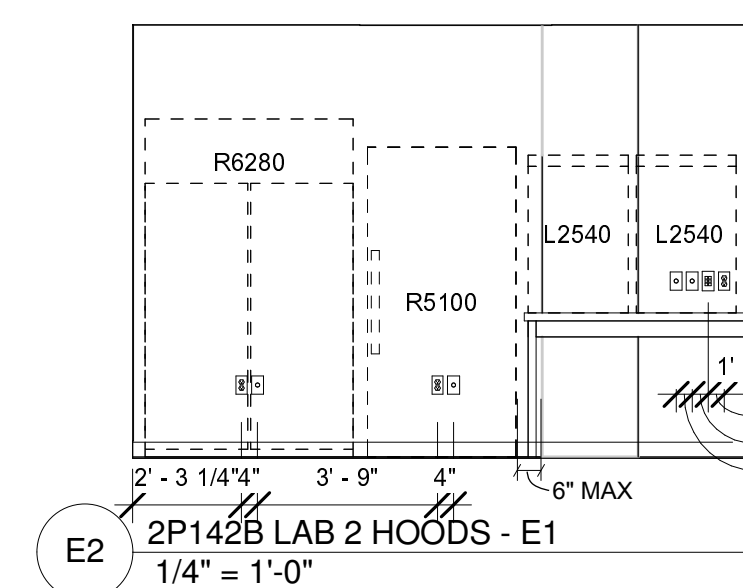
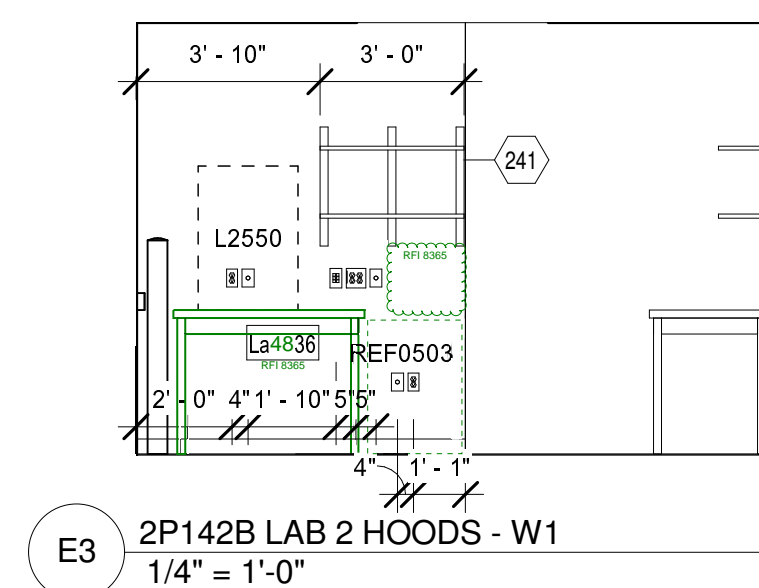
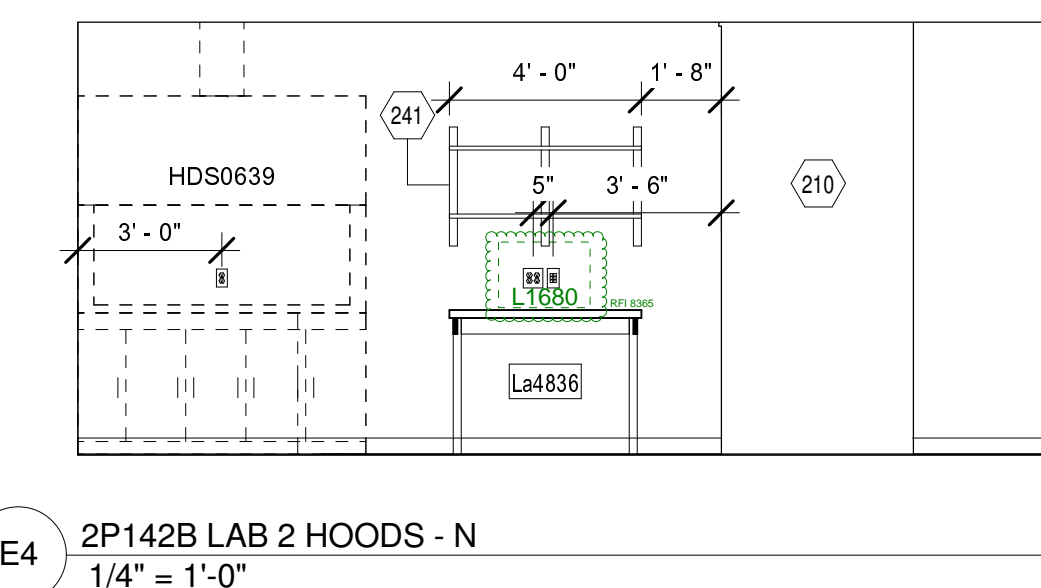
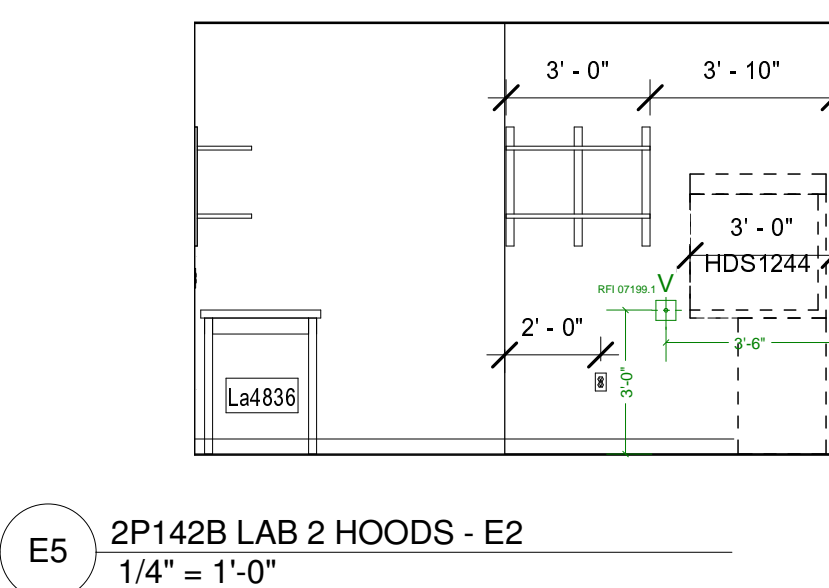
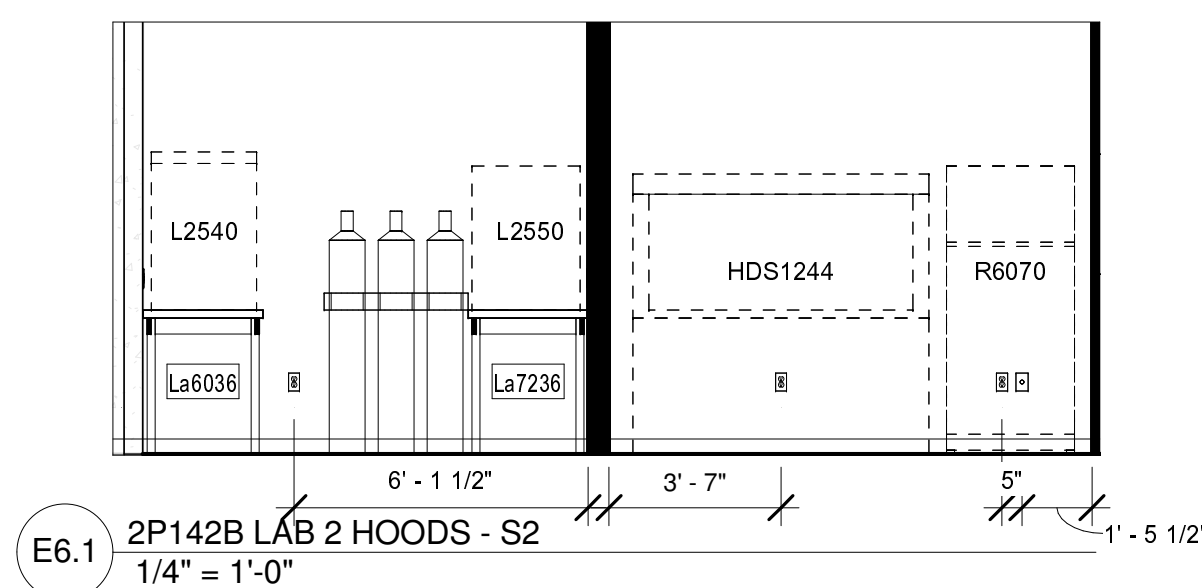
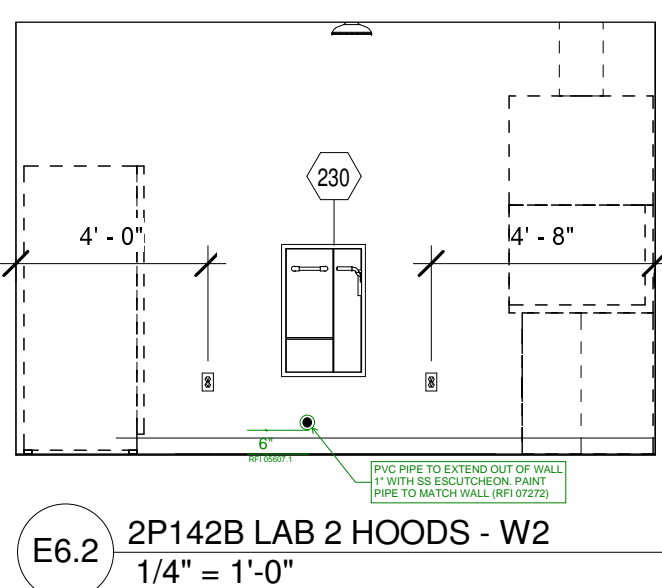
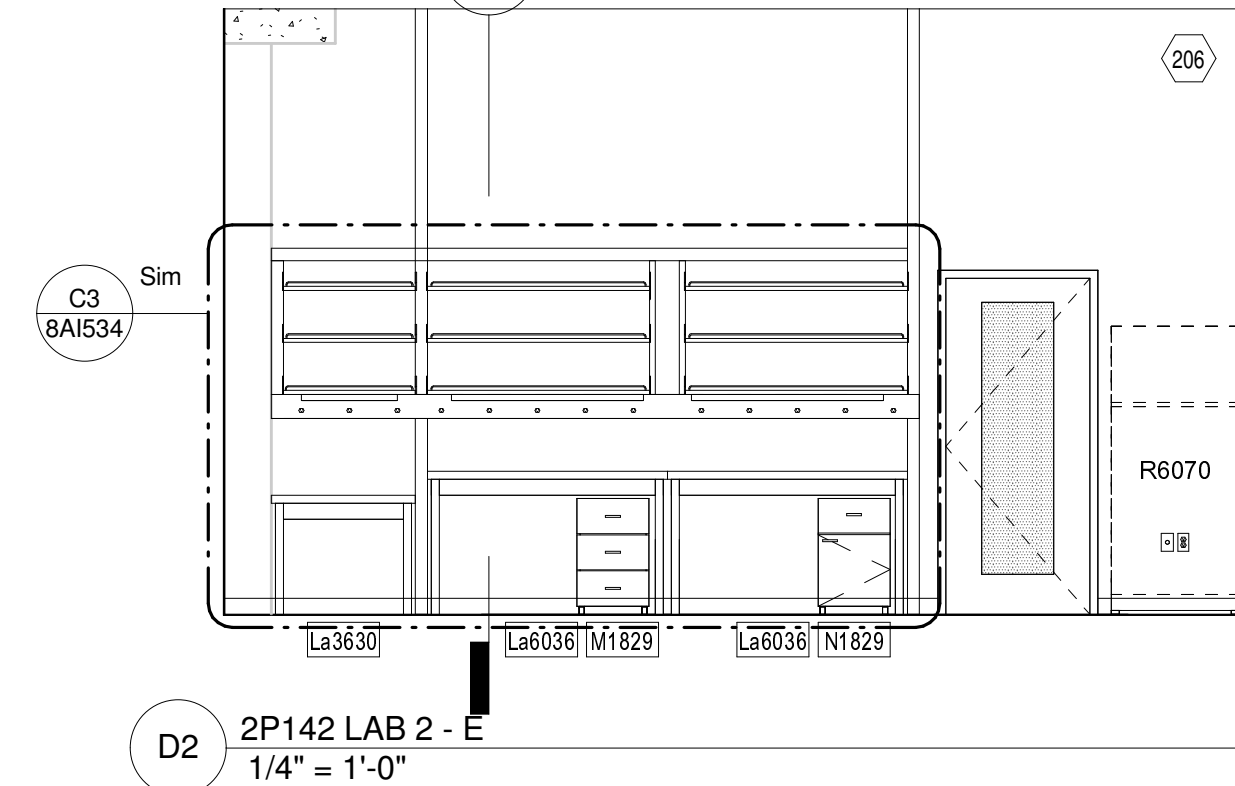
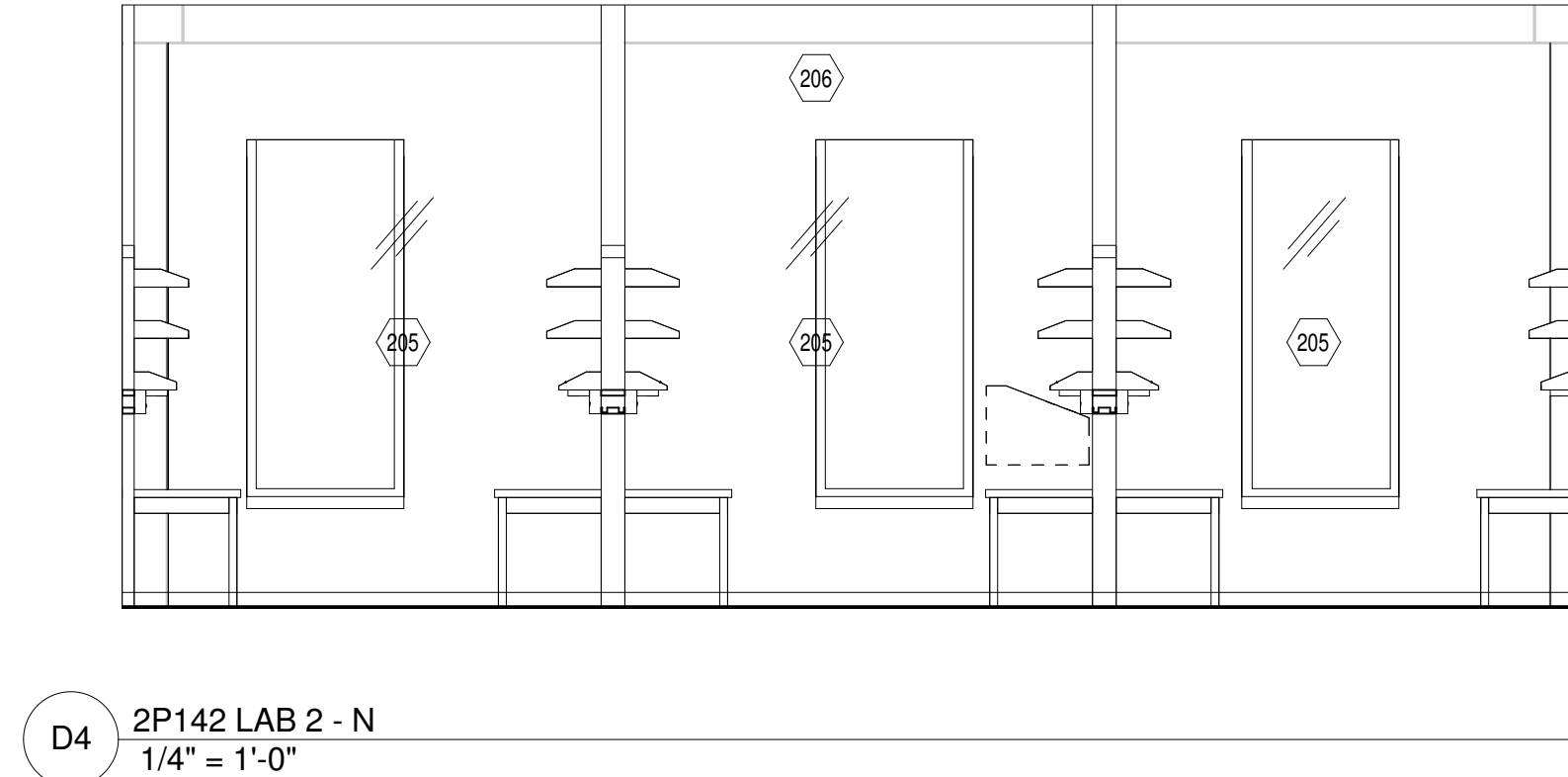
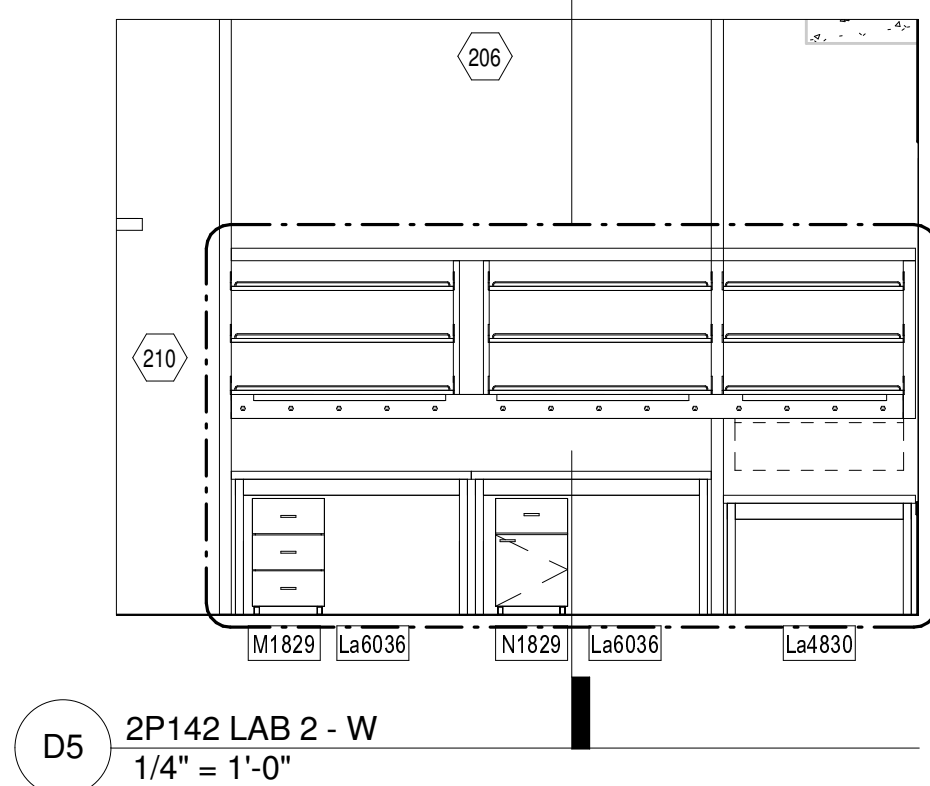
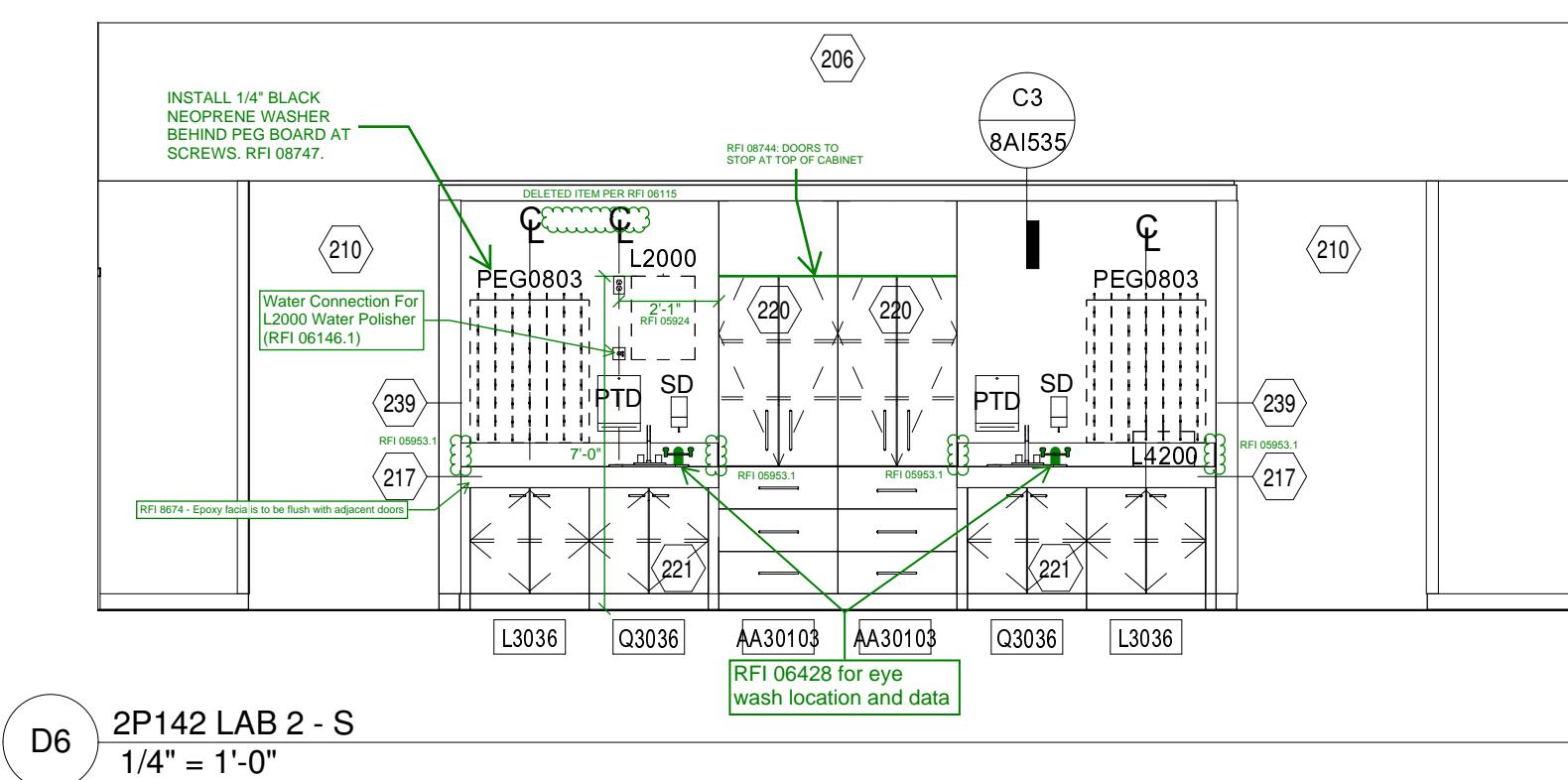
ONE EIGHT INCH = ONE FOOT

ONE SIXTEENTH INCH = ONE FOOT



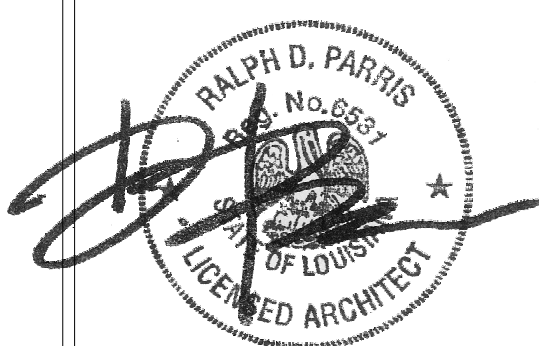
LEVEL - 02 AREA - P

REFERENCE SHEET 8A1002 FOR PARTITION TYPE SCHEDULE
REFERENCE SHEET 8A1400 FOR INTERIOR ELEVATION GENERAL NOTES
AND CODED NOTES
REFERENCE SHEET 8A1400 FOR RCP GENERAL NOTES AND CODED NOTES
REFERENCE SHEET 8A1200 FOR TYPICAL MOUNTING HEIGHTS
REFERENCE SHEET 8A1201 FOR GRAPHIC LEGEND OF WALL DEVICES



CONSULTANTS:

DESMAN ASSOCIATES / PARKING
CODE CONSULTANTS, INC. / CODE CONSULTANT
THE SEXTANT GROUP / AV & ACOUSTICAL
HAMMER DESIGN ASSOCIATES / FOOD SERVICE
PYBURN & ODOM / ABATEMENT
TATA & HOWARD / TANK CONSULTANT
I.S.C. GROUP, INC. / IRRIGATION
DAN EUSER WATER ARCHITECTURE, INC. / WATER FEATURE



ARCHITECT/ENGINEERS:

studio **NOVA**
SCHRENK & PETERSON CONSULTING ENGINEERS / CIVIL
KORDA/NEMETH ENGINEERING / STRUCTURAL
BR+A CONSULTING ENGINEERS / MECH. ELECT. PLUMBING, LOW VOLTAGE
ARCHITECTURAL ENGINEERING / PLUMBING
SCALES ASSOCIATES / FIRE PROTECTION

DRAWING TITLE
BLDG 8 LEVEL 2 ENLARGED VIEWS

APPROVED: PROJECT DIRECTOR

PROJECT TITLE
SLVHCS REPLACEMENT MEDICAL
CENTER PROJECTLOCATION
NEW ORLEANS, LOUISIANADATE
July 16, 2012CHECKED
SGDRAWN
JD/SGPROJECT NUMBER
100342.00
BUILDING NUMBER
08
DOCUMENT SET PACKAGE
WP_09B

DRAWING NUMBER

8A1421

OFFICE OF
CONSTRUCTION
AND FACILITIES
MANAGEMENT