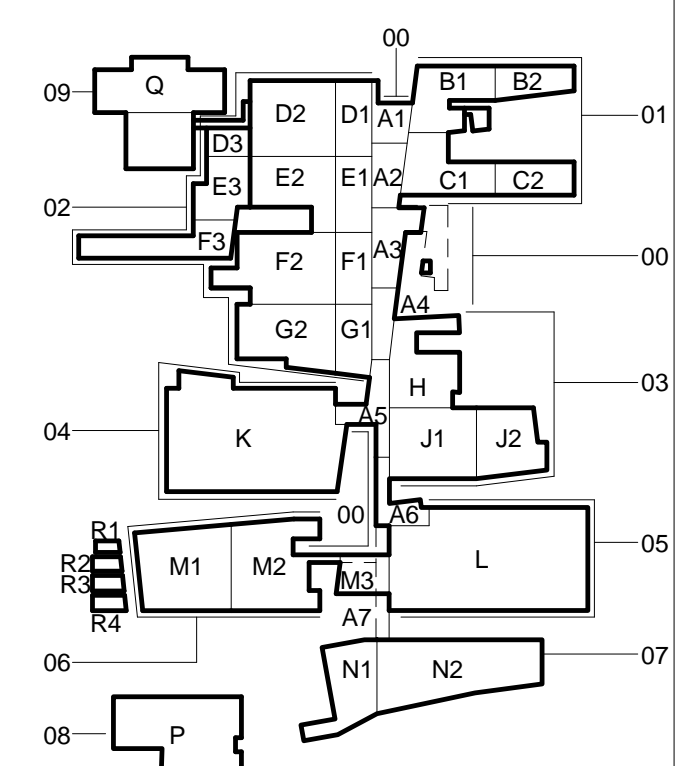
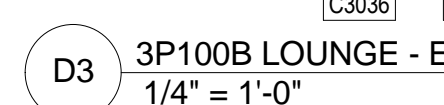
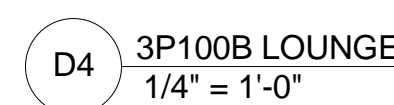
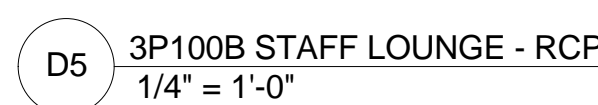
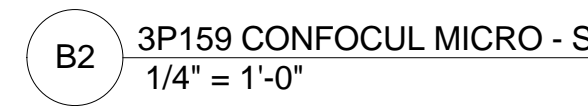
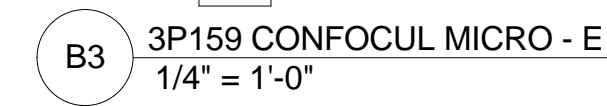
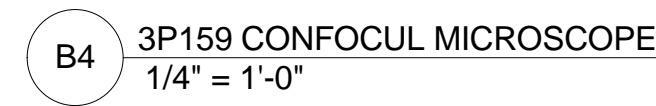
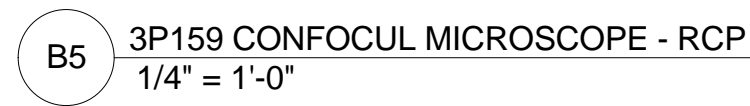
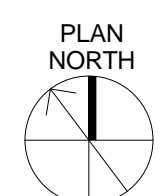


REFERENCE SHEET 8A1002 FOR PARTITION TYPE SCHEDULE
REFERENCE SHEET 8A1400 FOR INTERIOR ELEVATION GENERAL NOTES
AND CODED NOTES
REFERENCE SHEET 8A1400 FOR RCP GENERAL NOTES AND CODED NOTES
REFERENCE SHEET 8A1200 FOR TYPICAL MOUNTING HEIGHTS
REFERENCE SHEET 8A1201 FOR GRAPHIC LEGEND OF WALL DEVICES



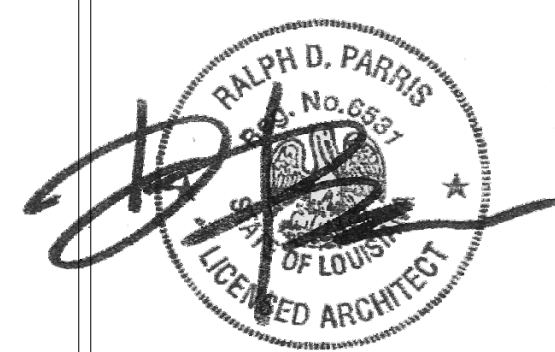
CONSTRUCTION DOCUMENTS 1
FULLY SPRINKLERED



OFFICE OF
CONSTRUCTION
AND FACILITIES
MANAGEMENT



			CONSULTANTS:
			DESMAN ASSOCIATES / PARKING
			CODE CONSULTANTS, INC. / CODE CONSULTANT
			THE SEXTANT GROUP / AV & ACOUSTICAL
			HAMMER DESIGN ASSOCIATES / FOOD SERVICE
			PYBURN & ODOM / ABATEMENT
9	Bulletin 048	10/13/2015	TATA & HOWARD / TANK CONSULTANT
			I.S.C. GROUP, INC. / IRRIGATION
			DAN EUSER WATER ARCHITECTURE, INC. / WATER FEATURE
	REVISIONS:	DATE	



SCHRENK & PETERSON CONSULTING ENGINEERS / CIVIL
KORDA/NEMETH ENGINEERING / STRUCTURAL
BR+A CONSULTING ENGINEERS / MECH, ELECT, PLUMBING, LOW VOLTAGE
ARCHITECTURAL ENGINEERING / PLUMBING
SCALES ASSOCIATES / FIRE PROTECTION

DRAWING TITLE

BLDG 8 LEVEL 3 ENLARGED VIEWS

APPROVED: PROJECT DIRECTOR

PROJECT TITLE	SLVHCS REPLACEMENT MEDICAL CENTER PROJECT
---------------	---

LOCATION NEW ORLEANS, LOUISIANA		
DATE July 16, 2012	CHECKED SG	DRAWN JD/SG

PROJECT NUMBER 100342.00		BUILDING NUMBER 08	
DOCUMENT SET PACKAGE WP_09B			

8A1431