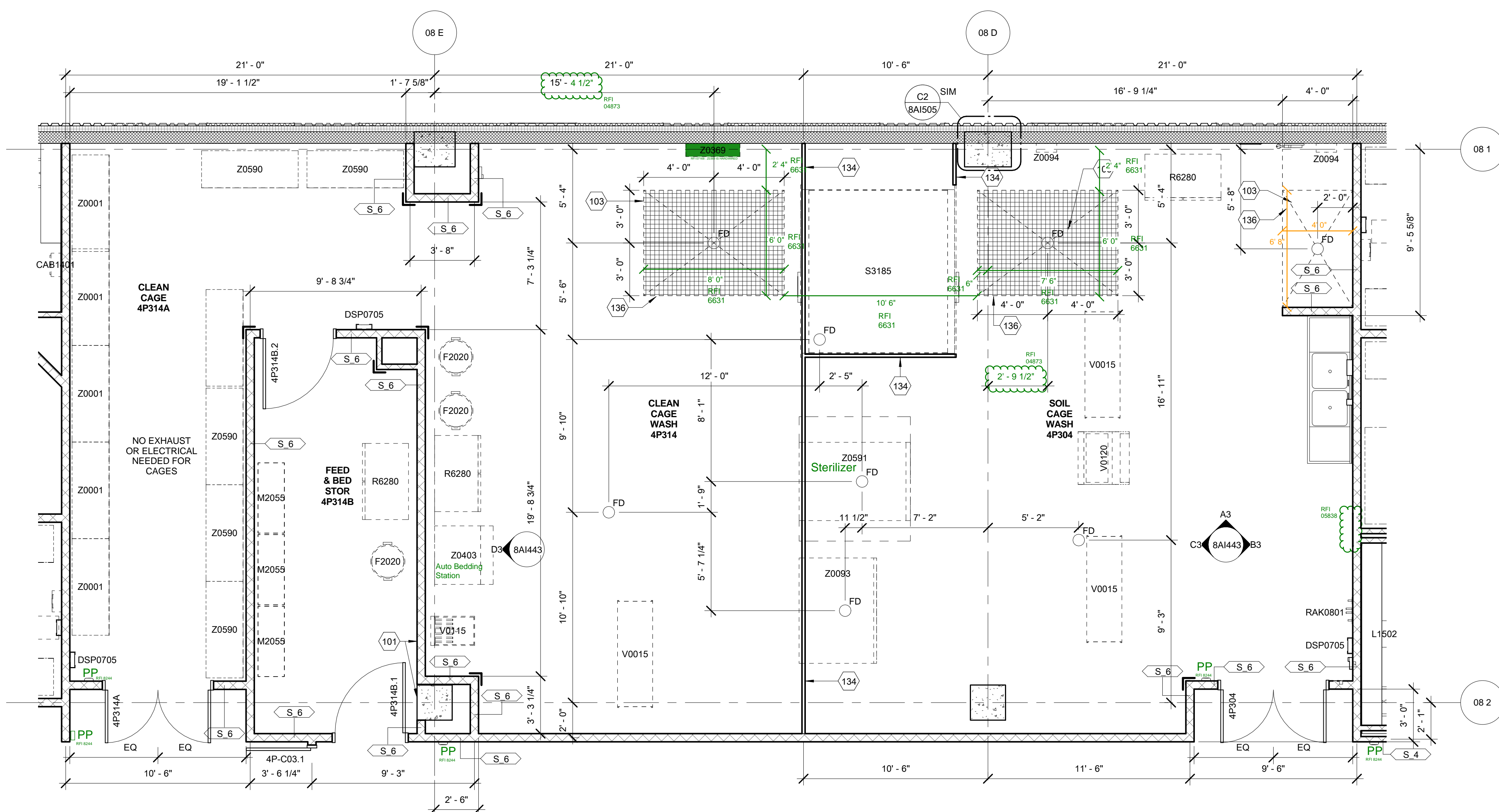
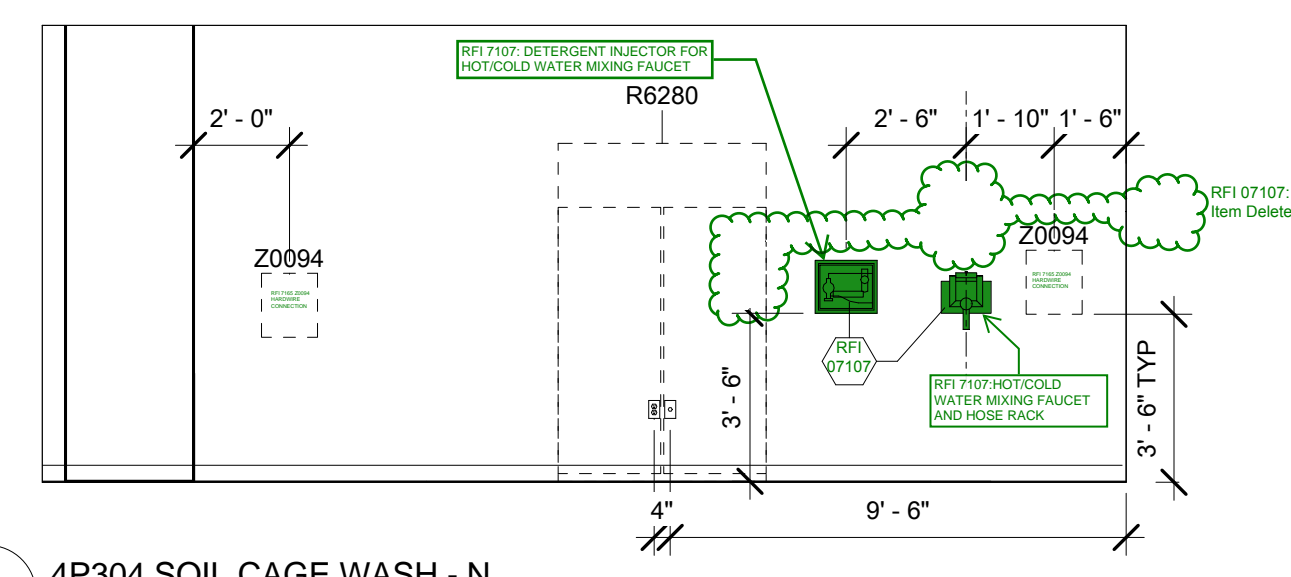


LEVEL - 04 AREA - P

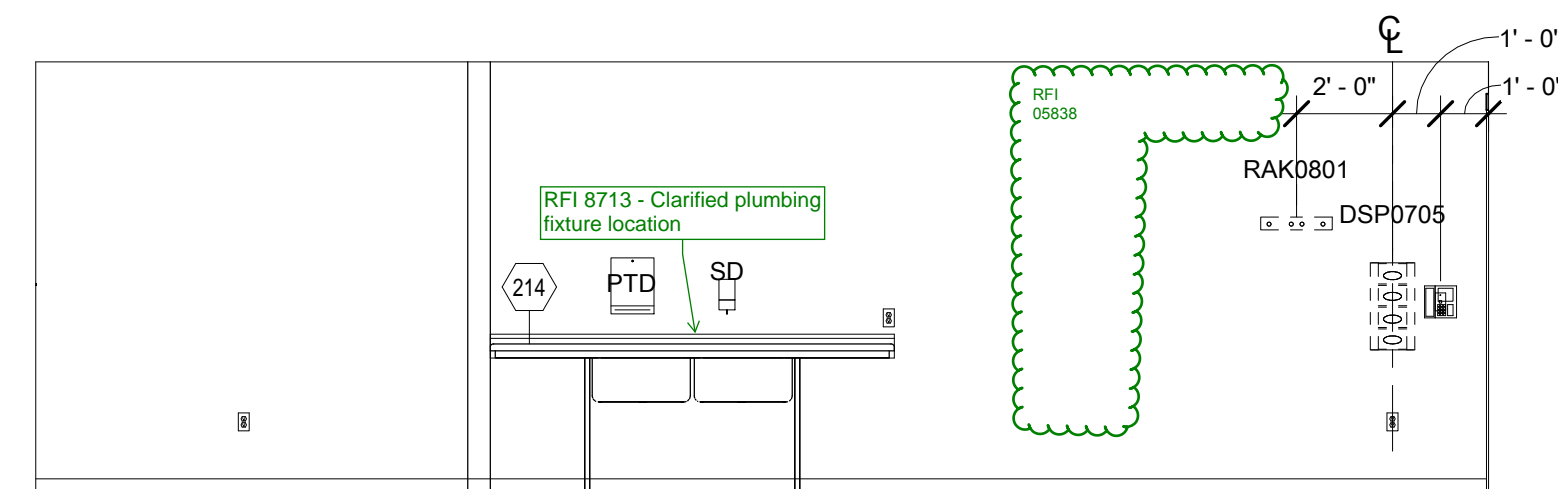
REFERENCE SHEET 8A1002 FOR PARTITION TYPE SCHEDULE
REFERENCE SHEET 8A1400 FOR INTERIOR ELEVATION GENERAL NOTES
AND CODED NOTES
REFERENCE SHEET 8A1400 FOR RCP GENERAL NOTES AND CODED NOTES
REFERENCE SHEET 8A1200 FOR TYPICAL MOUNTING HEIGHTS
REFERENCE SHEET 8A1201 FOR GRAPHIC LEGEND OF WALL DEVICES



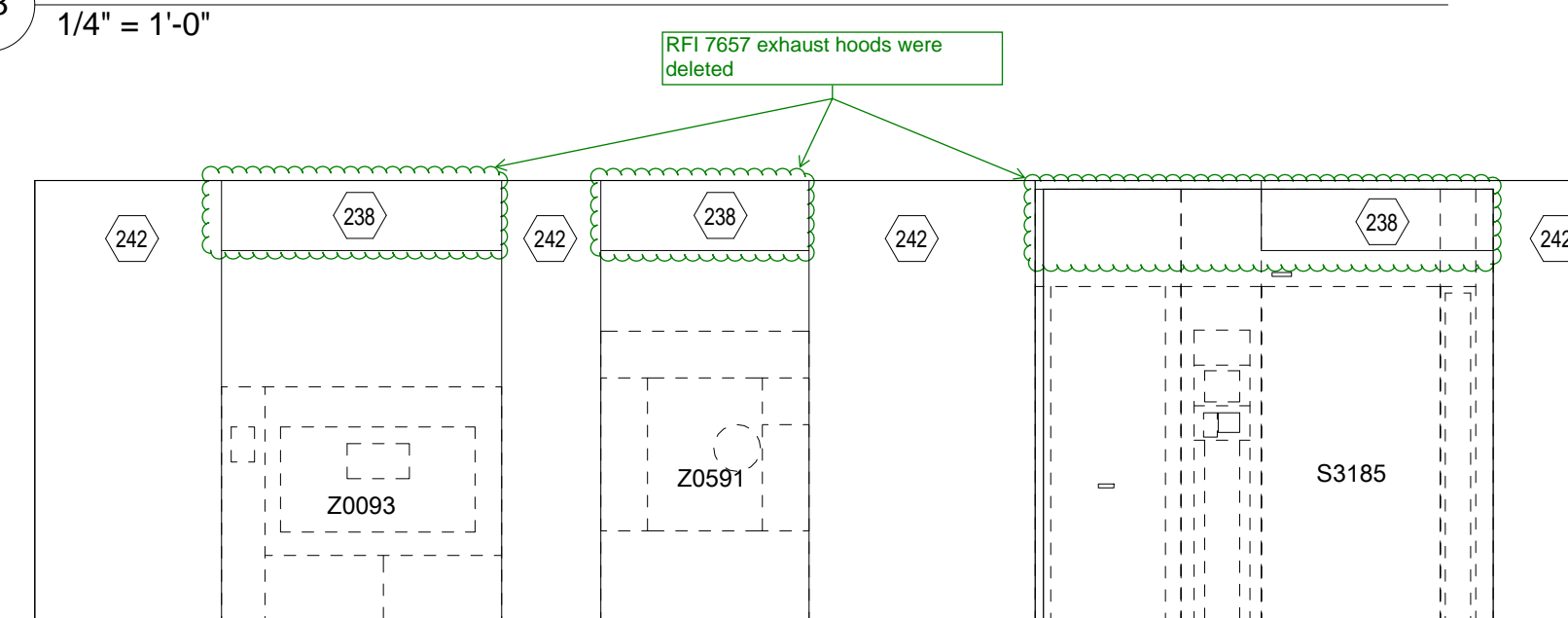
C6 4P314 CLEAN CAGE/4P304 SOIL CAGE WASH
1/4" = 1'-0"



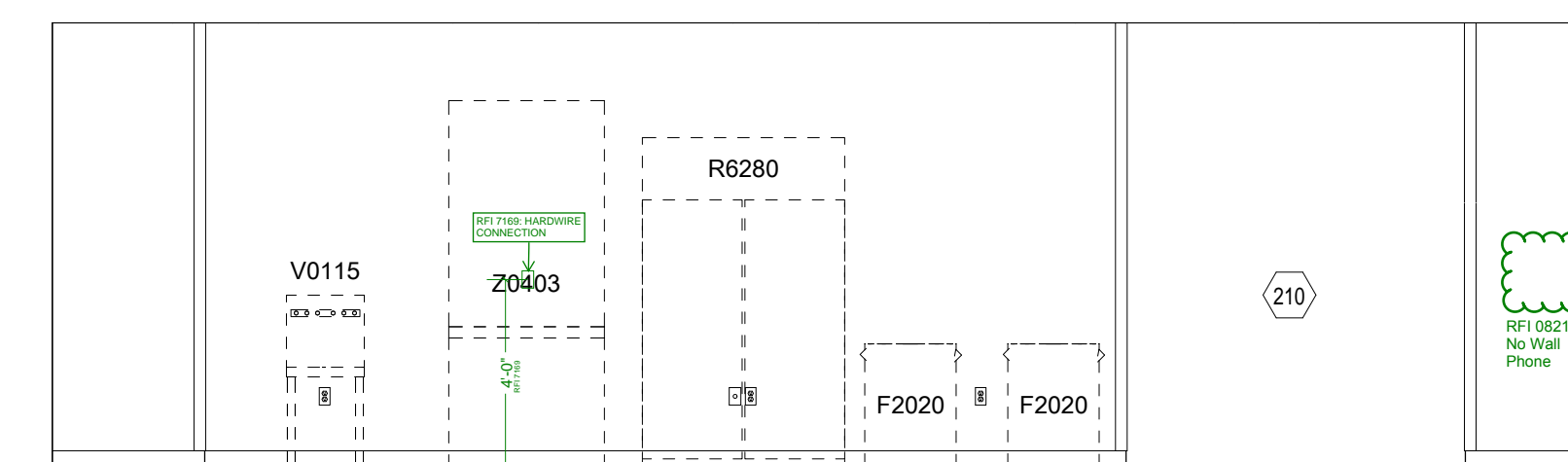
A3 4P304 SOIL CAGE WASH - N
1/4" = 1'-0"



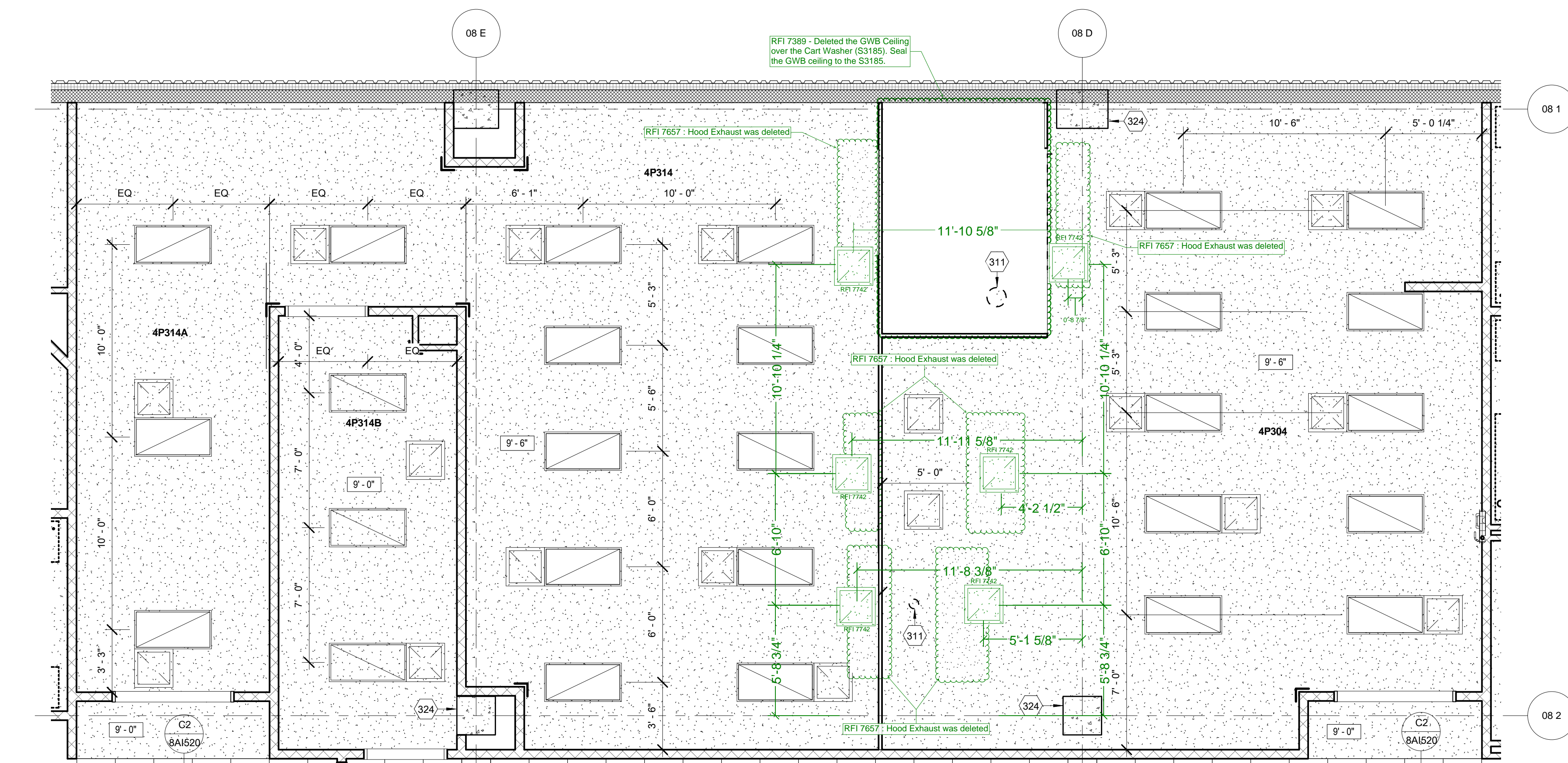
B3 4P304 SOIL CAGE WASH - E
1/4" = 1'-0"



C3 4P304 SOIL CAGE WASH - W
1/4" = 1'-0"



D3 4P314 CAGE WASH - W
1/4" = 1'-0"



F6 4P314 CLEAN CAGE/4P304 SOIL CAGE WASH - RCP
1/4" = 1'-0"

[illegible]

CONSULTANTS:

DESMAN ASSOCIATES / PARKING
CODE CONSULTANTS, INC. / CODE CONSULTANT
THE SEXTANT GROUP / AV & ACOUSTICAL
HAMMER DESIGN ASSOCIATES / FOOD SERVICE
PYBURN & ODOM / ABATEMENT
TATA & HOWARD / TANK CONSULTANT
I.S.C. GROUP, INC. / IRRIGATION
DAN EUSER WATER ARCHITECTURE, INC. / WATER FEATURE



ARCHITECT/ENGINEERS:

studio **NOVA**

SCHRENK & PETERSON CONSULTING ENGINEERS / CIVIL
KORDA/NEMETH ENGINEERING / STRUCTURAL
BR+A CONSULTING ENGINEERS / MECH, ELECT, PLUMBING, LOW VOLTAGE
ARCHITECTURAL ENGINEERING / PLUMBING
SCALES ASSOCIATES / FIRE PROTECTION

DRAWING TITLE
BLDG 8 LEVEL 4 ENLARGED VIEWS

APPROVED: PROJECT DIRECTOR

Jadd Sanders

PROJECT TITLE	SLVHCS REPLACEMENT MEDICAL CENTER PROJECT
---------------	---

LOCATION	NEW ORLEANS, LOUISIANA
----------	------------------------

DATE	CHECKED	DRAWN
July 16, 2012	SG	JD/SG

PROJECT NUMBER	BUILDING NUMBER
100342.00	08
DOCUMENT SET PACKAGE	
WP_09B	

8A1443

OFFICE OF
CONSTRUCTION
AND FACILITIES
MANAGEMENT

