

ONE INCH = FORTY FEET (1" = 40')

0' 15' 30'

THREE INCHES = ONE FOOT

0' 6'

ONE AND ONE HALF INCHES = ONE FOOT

0' 6'

THREE QUARTERS INCH = ONE FOOT

0' 6'

ONE HALF INCH = ONE FOOT

0' 6'

ONE QUARTER INCH = ONE FOOT

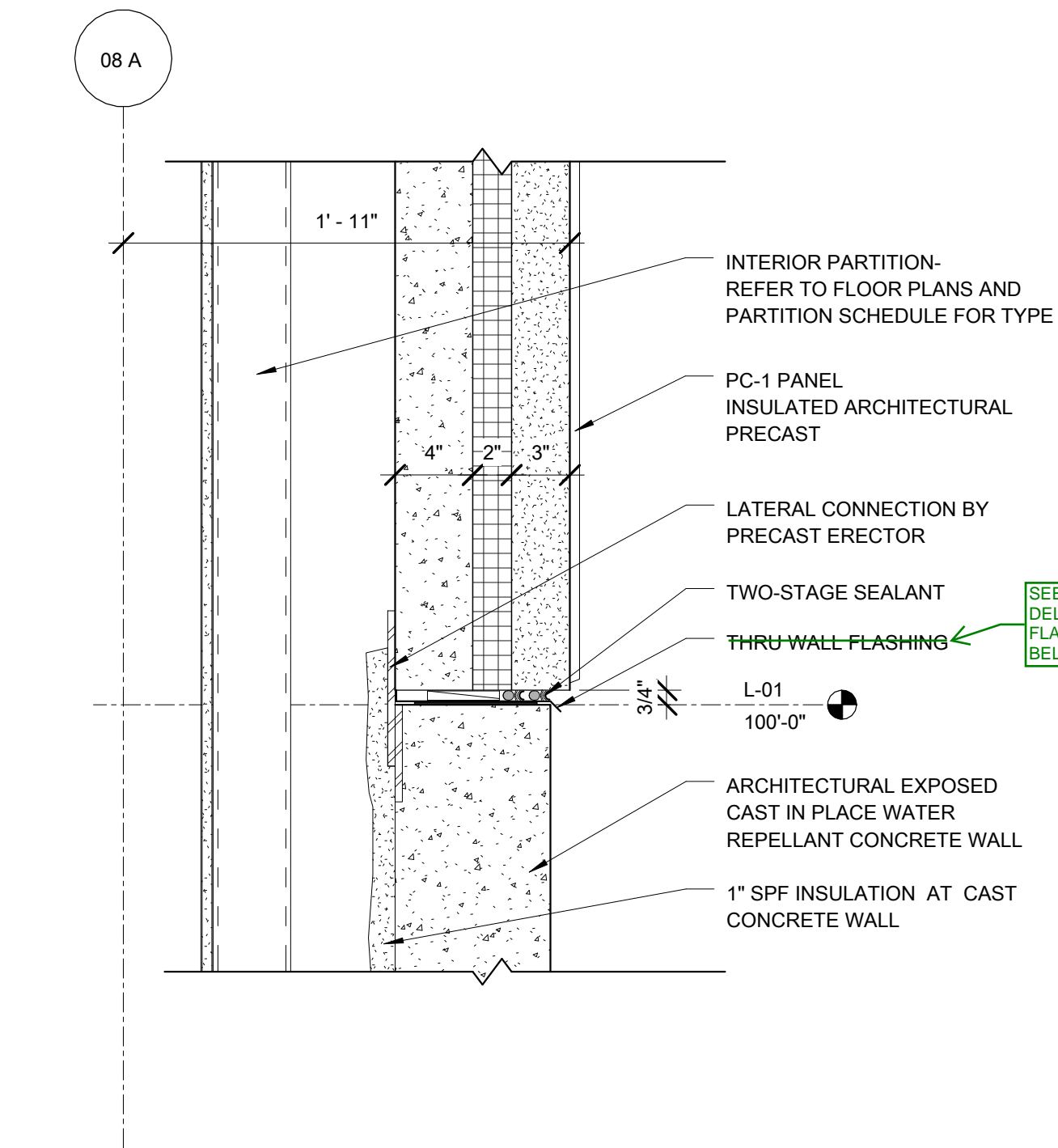
0' 6'

ONE EIGHT INCH = ONE FOOT

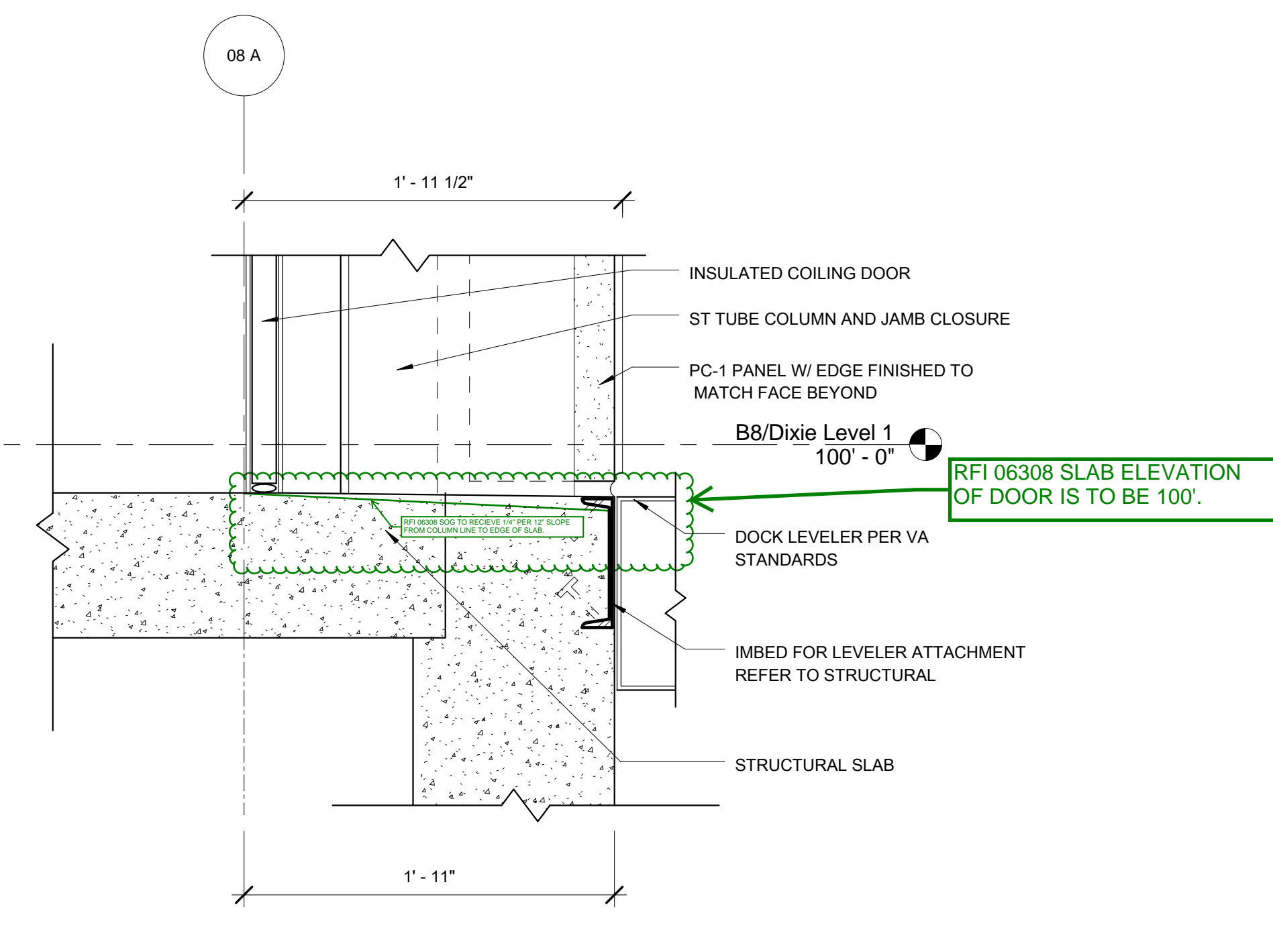
0' 6'

ONE SIXTEENTH INCH = ONE FOOT

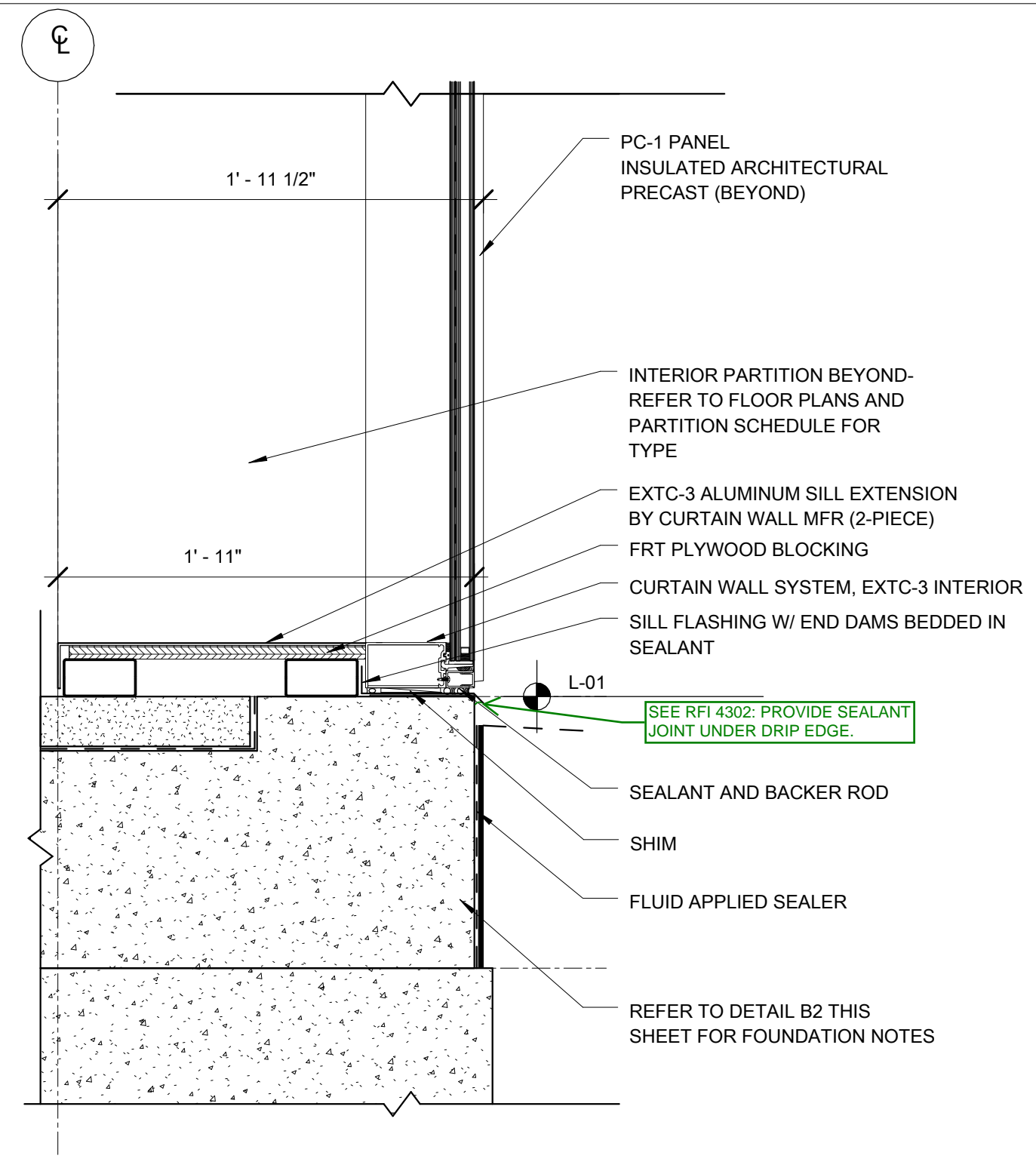
0' 6'



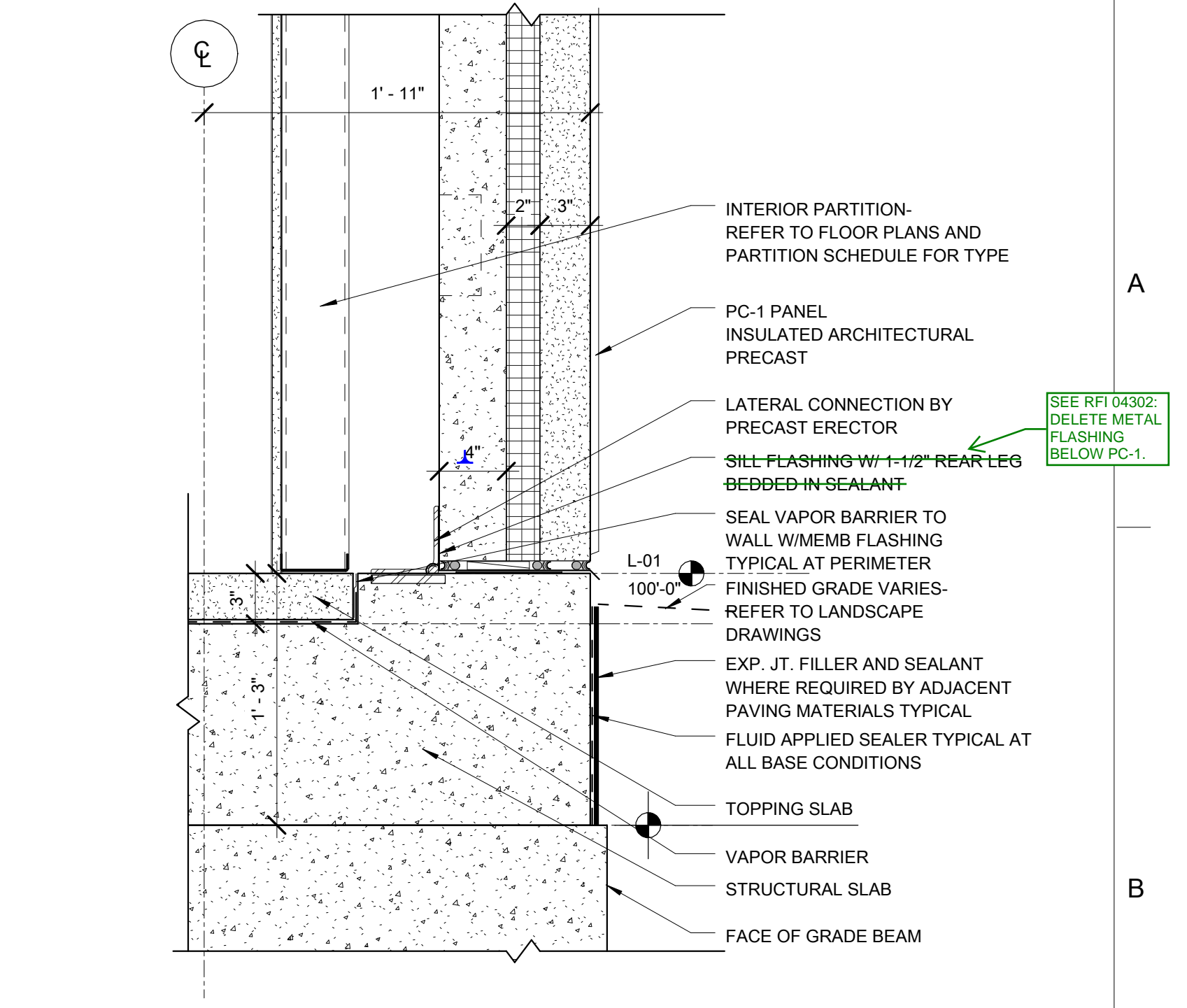
B6 PC-1 BASE @ CAST WALL STAIR 1
SCALE: 1 1/2" = 1'-0"



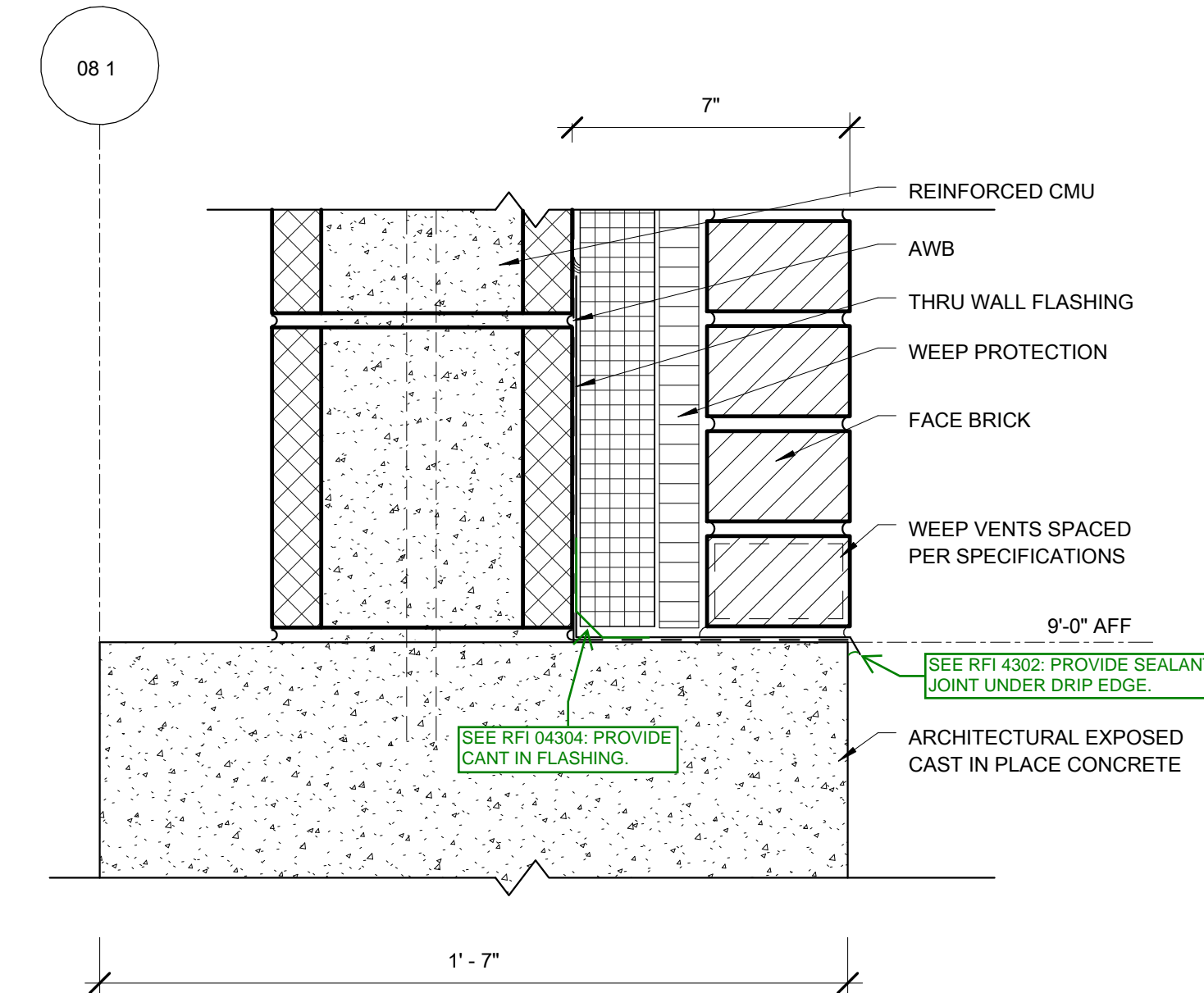
B4 BASE @ COILING DOOR AND DOCK LEVELER
SCALE: 1 1/2" = 1'-0"



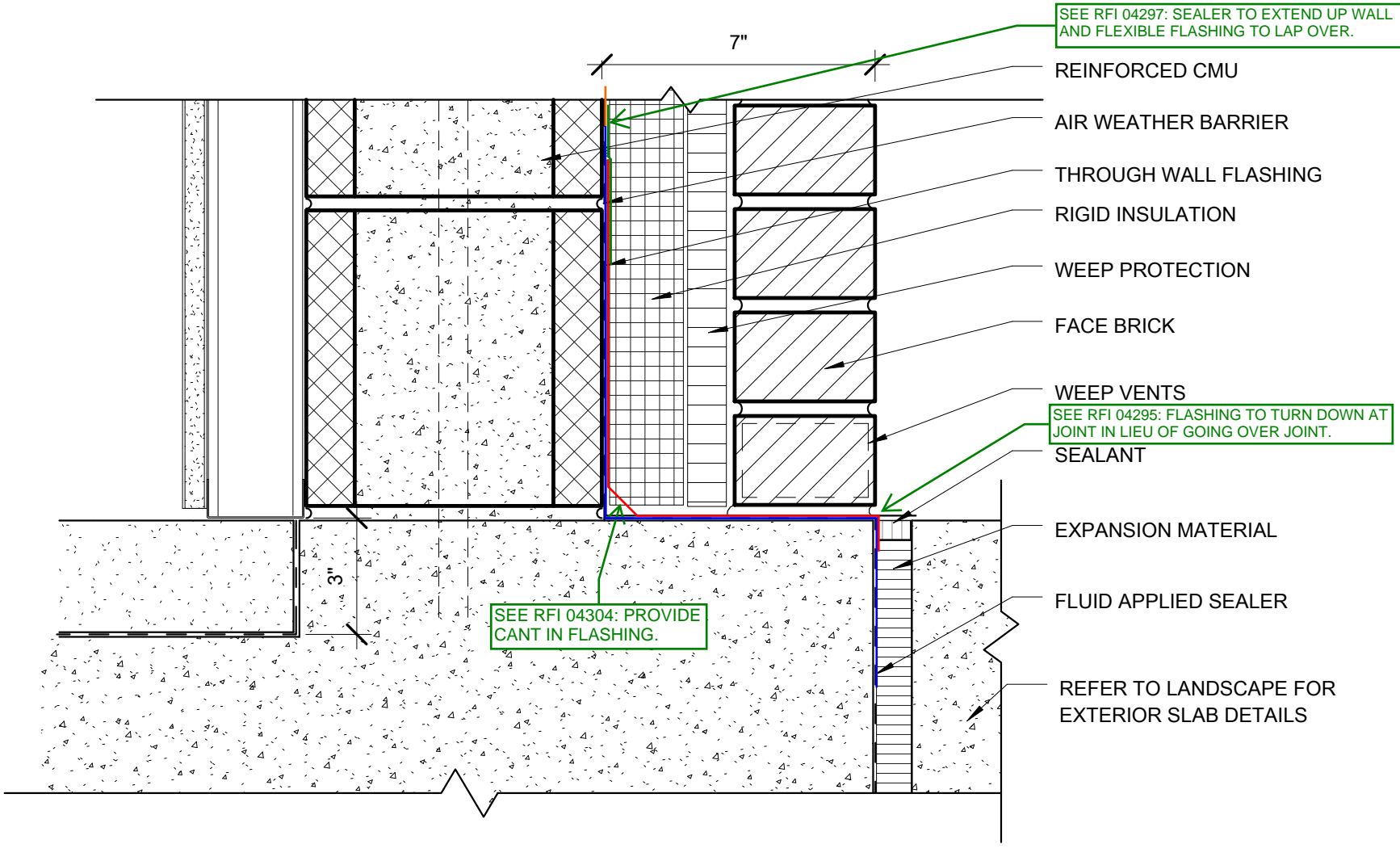
B3 PC-1 BASE DETAIL @ CW
SCALE: 1 1/2" = 1'-0"



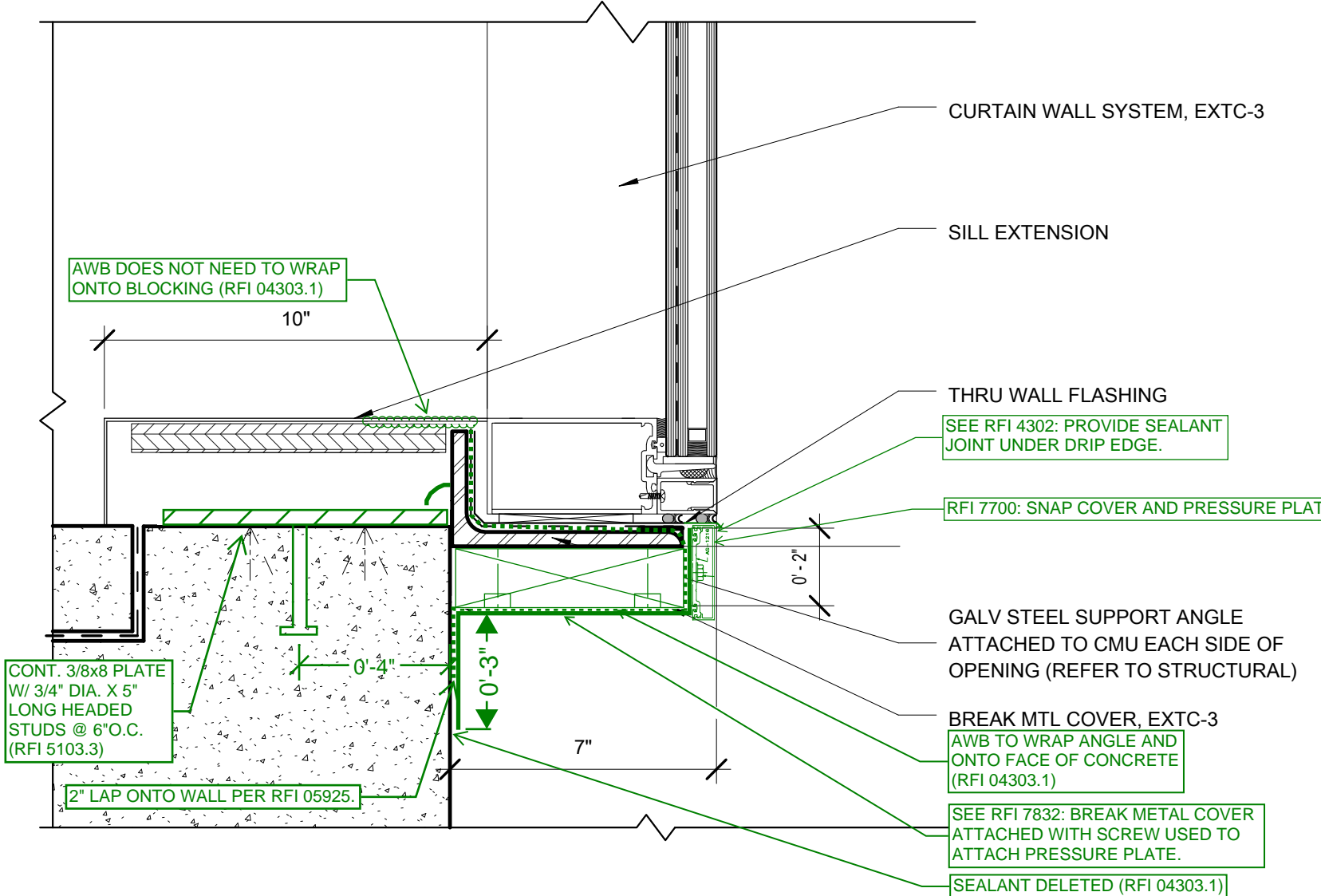
B2 PC-1 BASE DETAIL
SCALE: 1 1/2" = 1'-0"



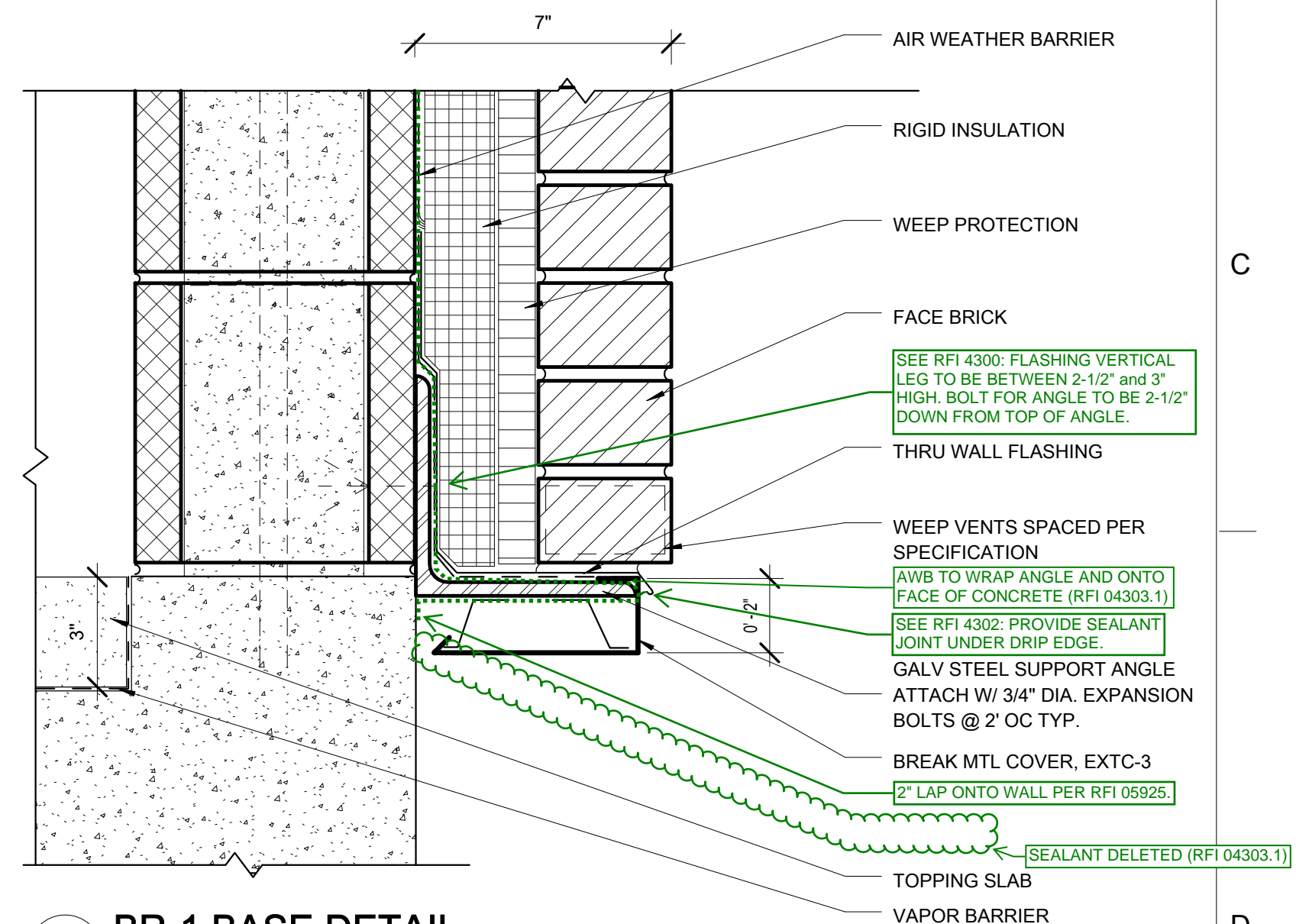
D5 BR-1 BASE @ CONCRETE WALL
SCALE: 3" = 1'-0"



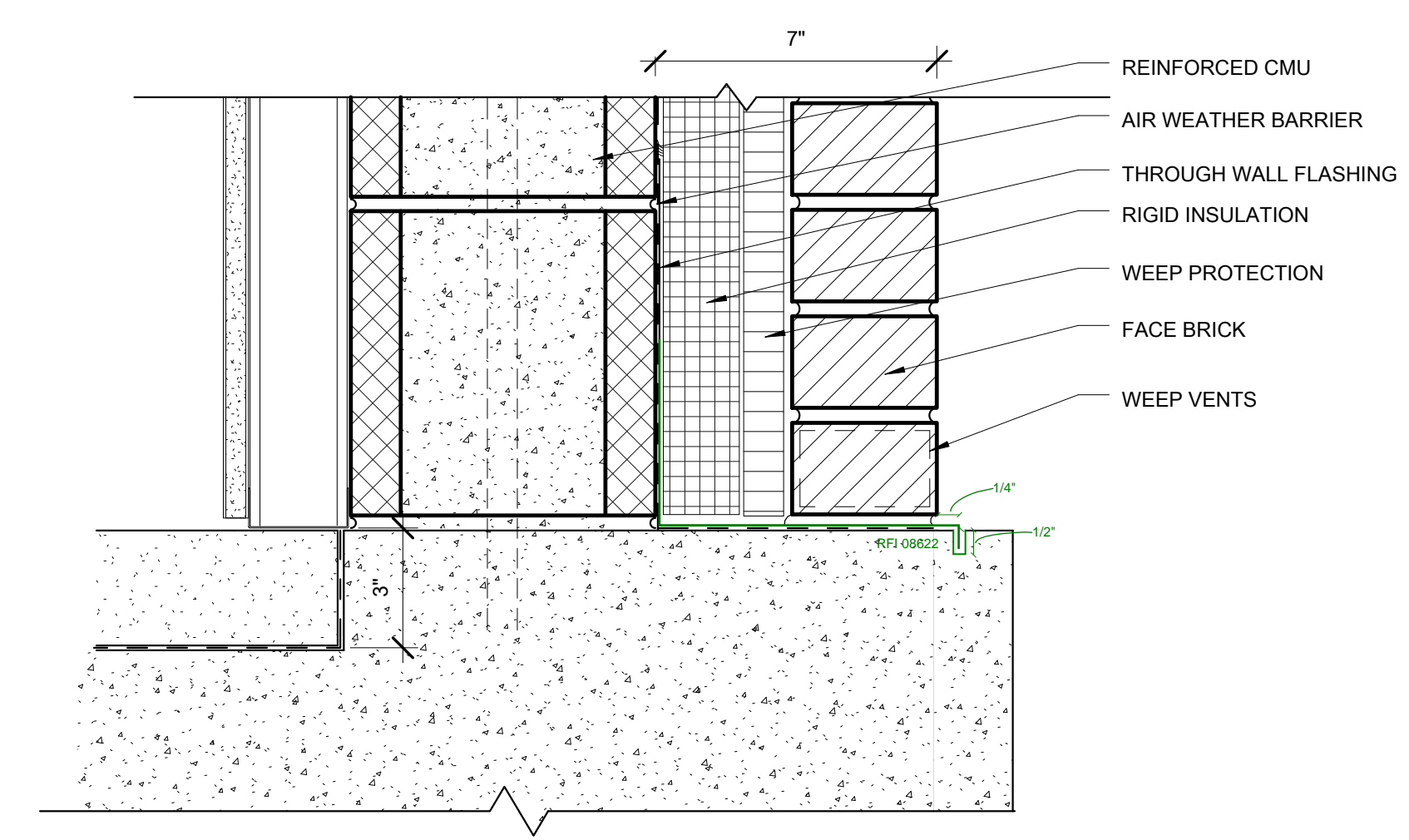
D4 BR-1 BASE @ TERRACE
SCALE: 3" = 1'-0"



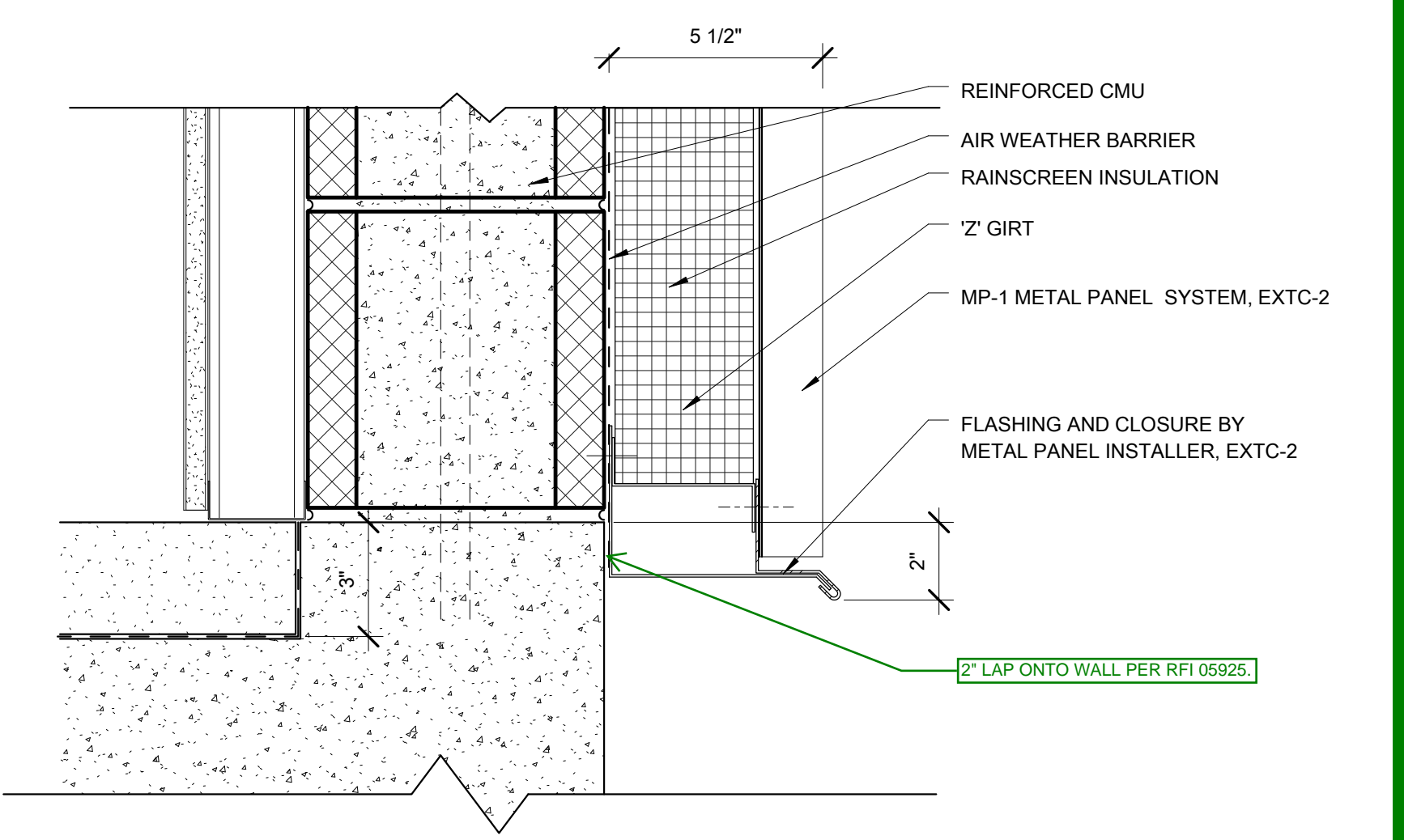
D3 BR-1 BASE DETAIL @ CW
SCALE: 3" = 1'-0"



D2 BR-1 BASE DETAIL
SCALE: 3" = 1'-0"

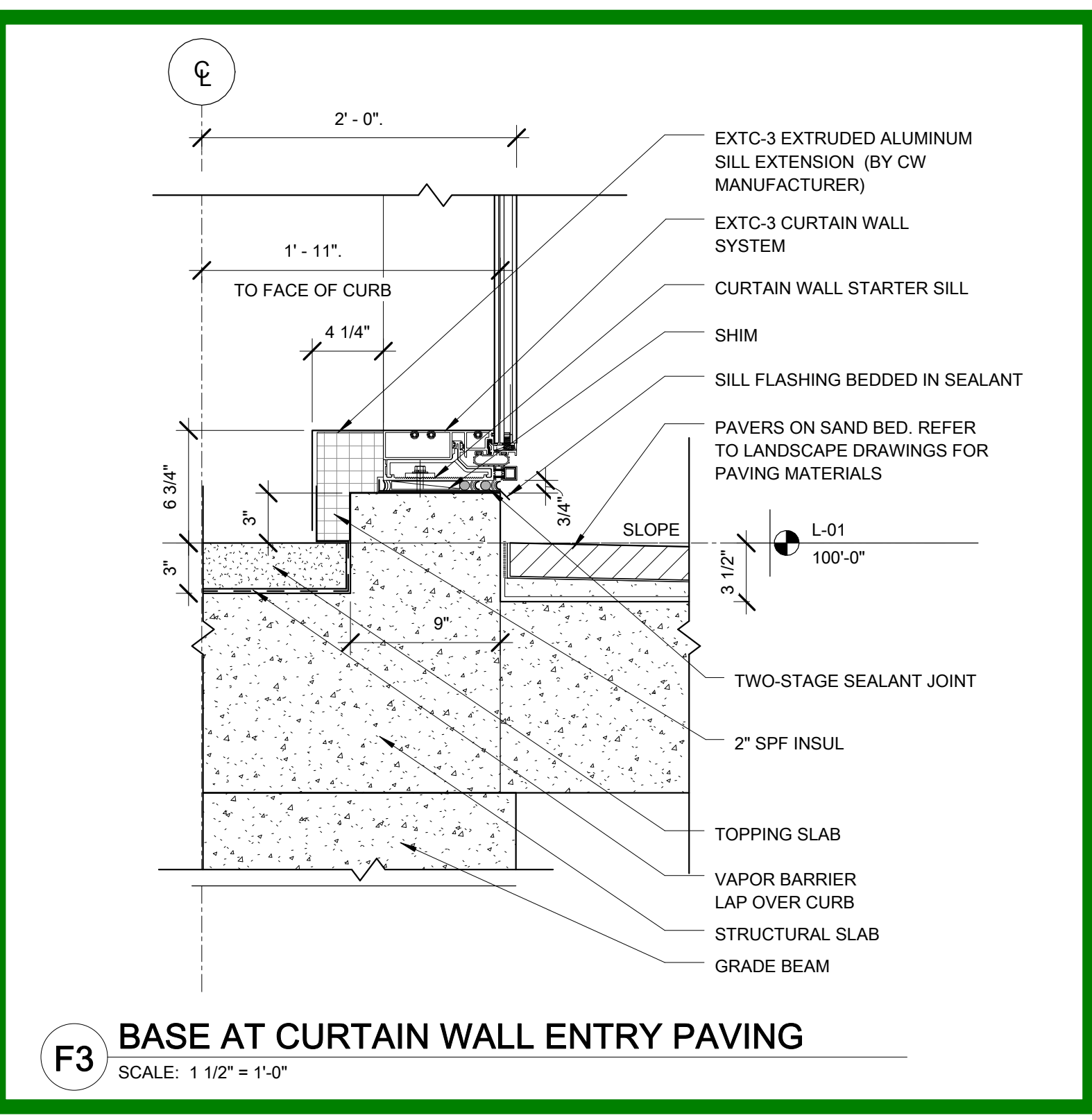


BR-1 BASE @ WEST ELEVATION
SCALE: 3" = 1'-0"

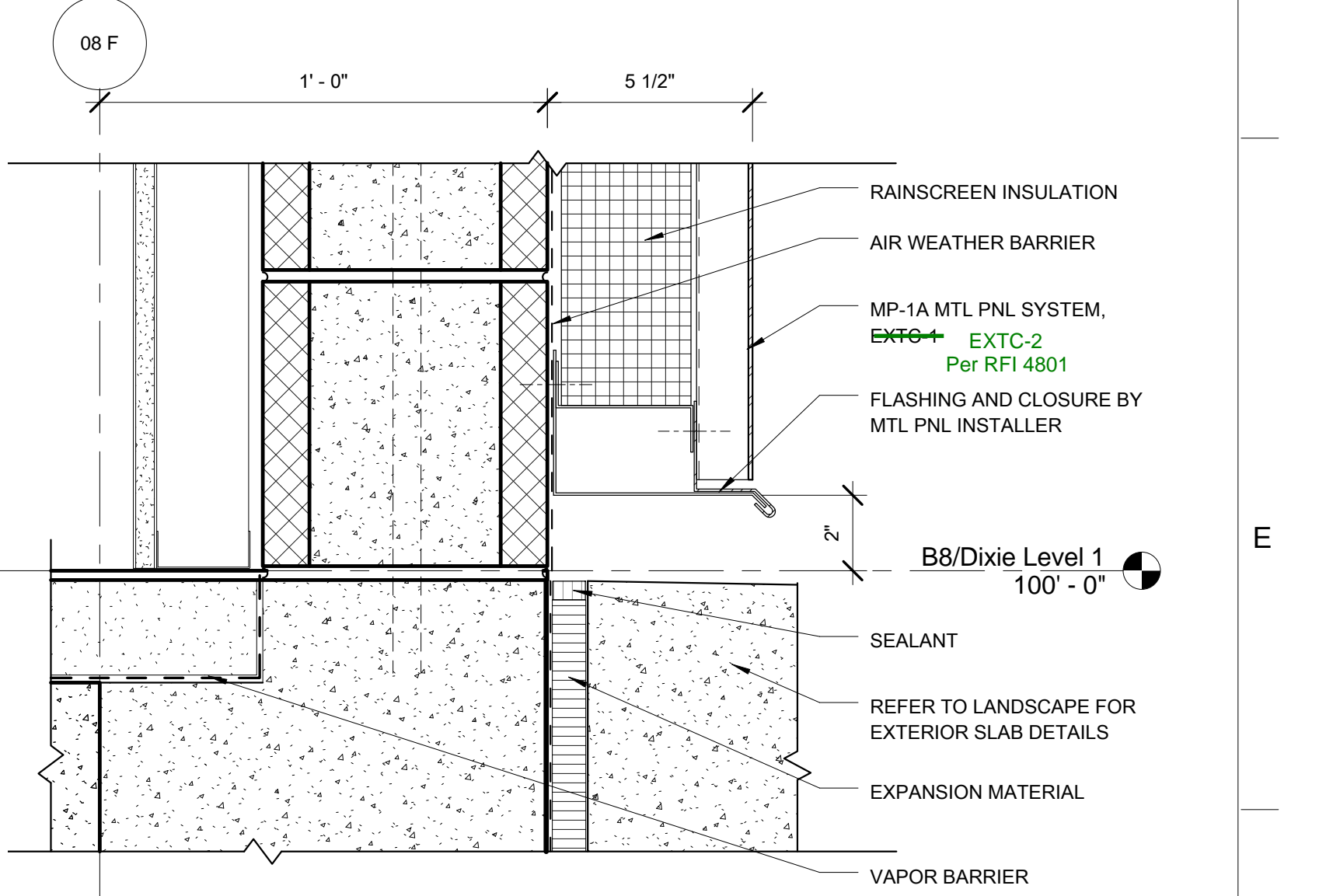


F4 BASE @ MP-1
SCALE: 3" = 1'-0"

SEE RFI 03155 FOR SLAB DETAIL CLARIFICATION.



F3 BASE AT CURTAIN WALL ENTRY PAVING
SCALE: 1 1/2" = 1'-0"



F2 MP-1A BASE DETAIL
SCALE: 3" = 1'-0"

CONSULTANTS: DESMAN ASSOCIATES / PARKING CODE CONSULTANTS, INC. / CODE CONSULTANT THE SEXTANT GROUP / AV & ACOUSTICAL HAMMER DESIGN ASSOCIATES / FOOD SERVICE PYBURN & ODOM / ABATEMENT TATA & HOWARD / TANK CONSULTANT I.S.C. GROUP, INC. / IRRIGATION DAN EUSER WATER ARCHITECTURE, INC. / WATER FEATURE		ARCHITECT/ENGINEERS: studio NOVA SCHRENK & PETERSON CONSULTING ENGINEERS / CIVIL KORDA/NEMETH ENGINEERING / STRUCTURAL BR+A CONSULTING ENGINEERS / MECH. ELECT. PLUMBING, LOW VOLTAGE ARCHITECTURAL ENGINEERING / PLUMBING SCALES ASSOCIATES / FIRE PROTECTION		DRAWING TITLE EXTERIOR DETAILS-BUILDING BASE		PROJECT TITLE SLVHCS REPLACEMENT MEDICAL CENTER PROJECT		PROJECT NUMBER 100342.00		BUILDING NUMBER 8		OFFICE OF CONSTRUCTION AND FACILITIES MANAGEMENT Department of Veterans Affairs	
REVISIONS:				APPROVED: PROJECT DIRECTOR <i>Yadda Jandera</i>		LOCATION NEW ORLEANS, LOUISIANA		DOCUMENT SET PACKAGE WP_09B		DRAWING NUMBER 8AS510			
DATE				DATE July 16, 2012		CHECKED JR		DRAWN KS/CN					

VA FORM 08-6231