

A
ONE INCH = FORTY FEET (1" = 40')
0' 15' 30'

B
THREE INCHES = ONE FOOT
0' 6'

C
ONE AND ONE HALF INCHES = ONE FOOT
0' 6'

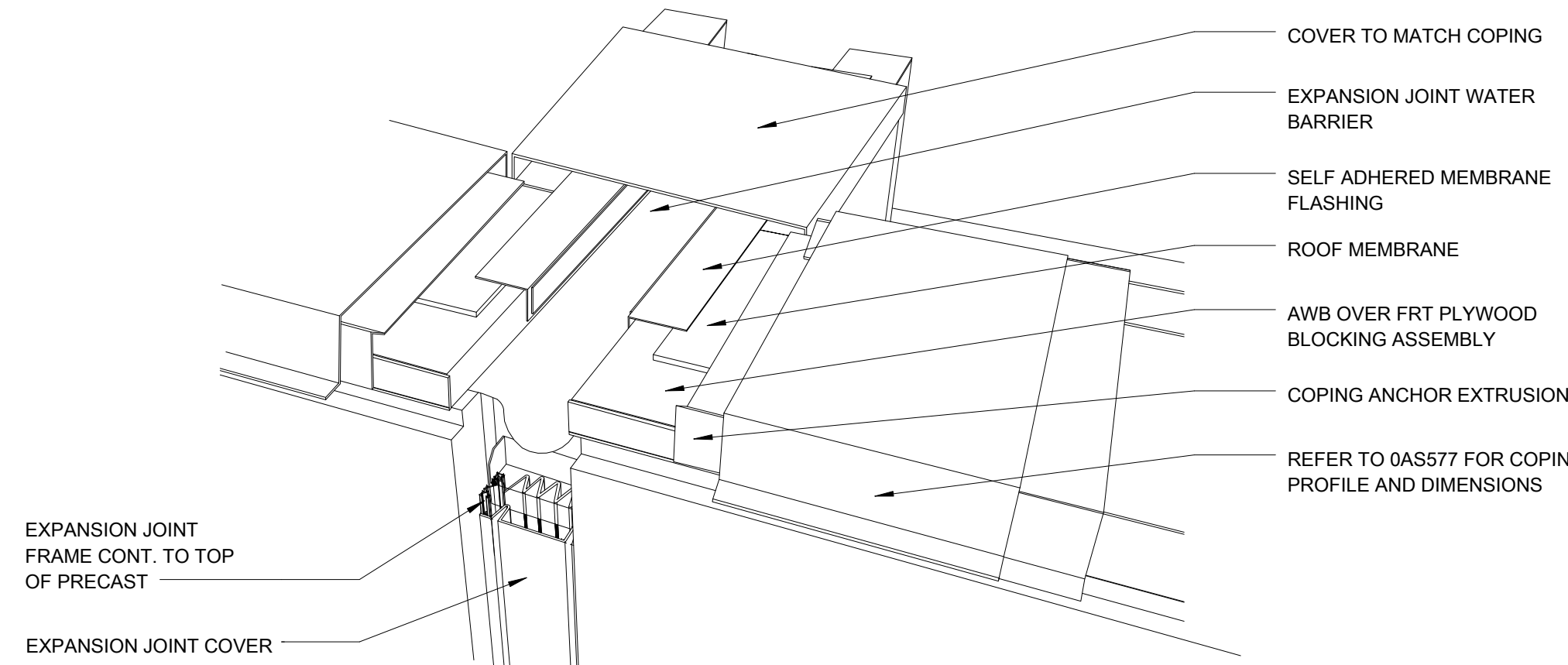
D
THREE QUARTERS INCH = ONE FOOT
0' 6'

E
ONE HALF INCH = ONE FOOT
0' 6'

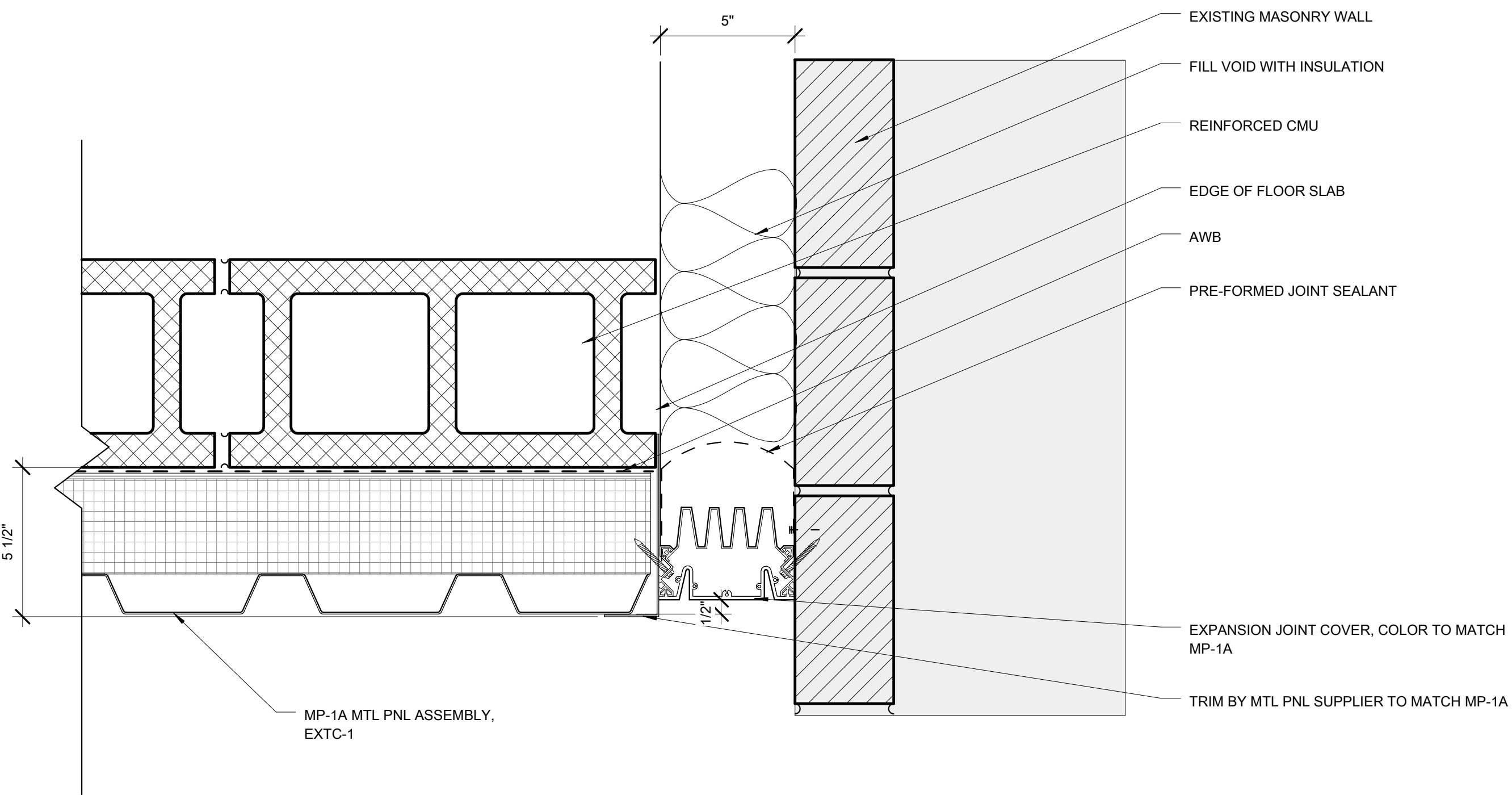
F
ONE QUARTER INCH = ONE FOOT
0' 6'

G
ONE EIGHT INCH = ONE FOOT
0' 6'

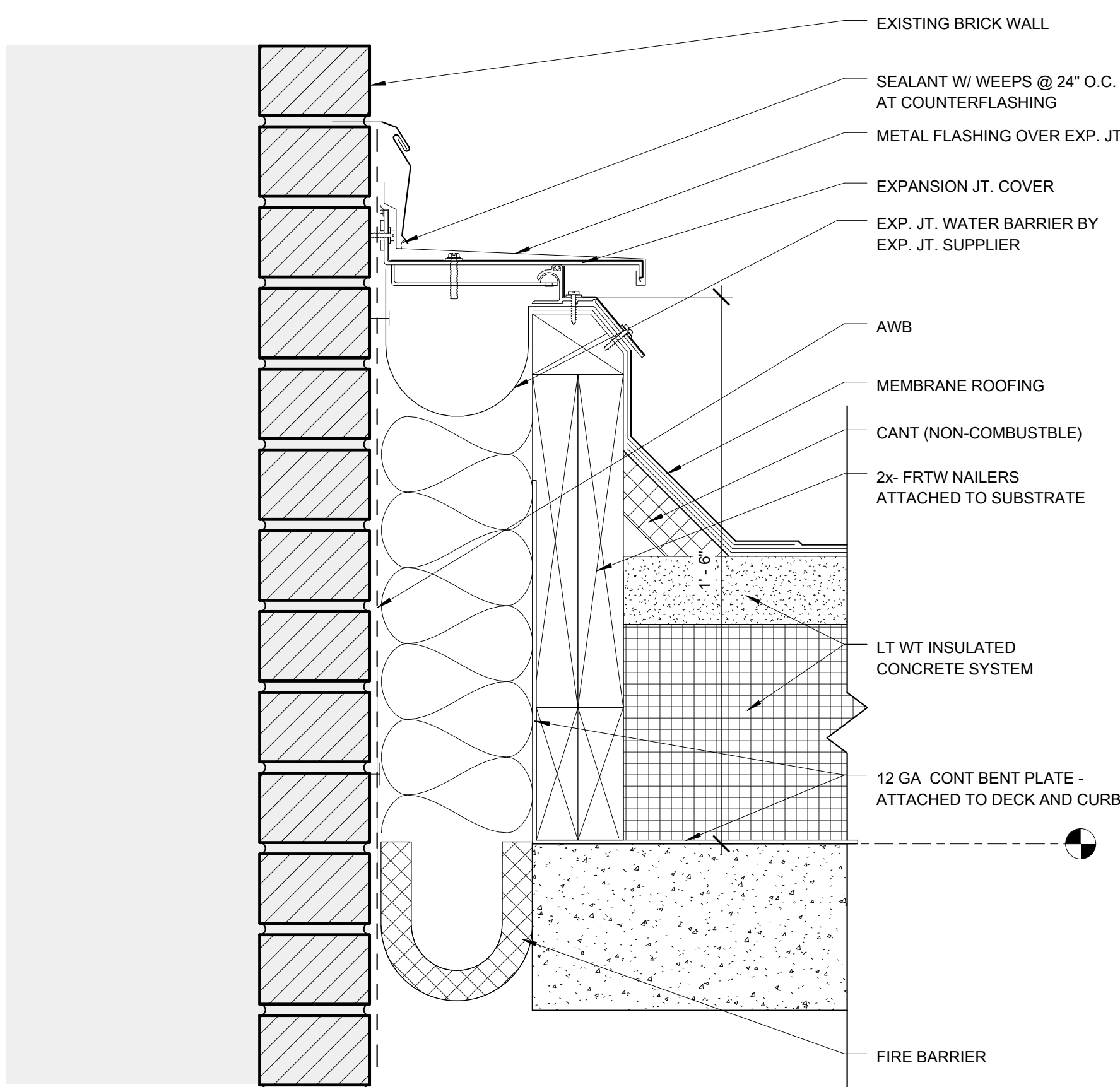
H
ONE SIXTEENTH INCH = ONE FOOT
0' 6'



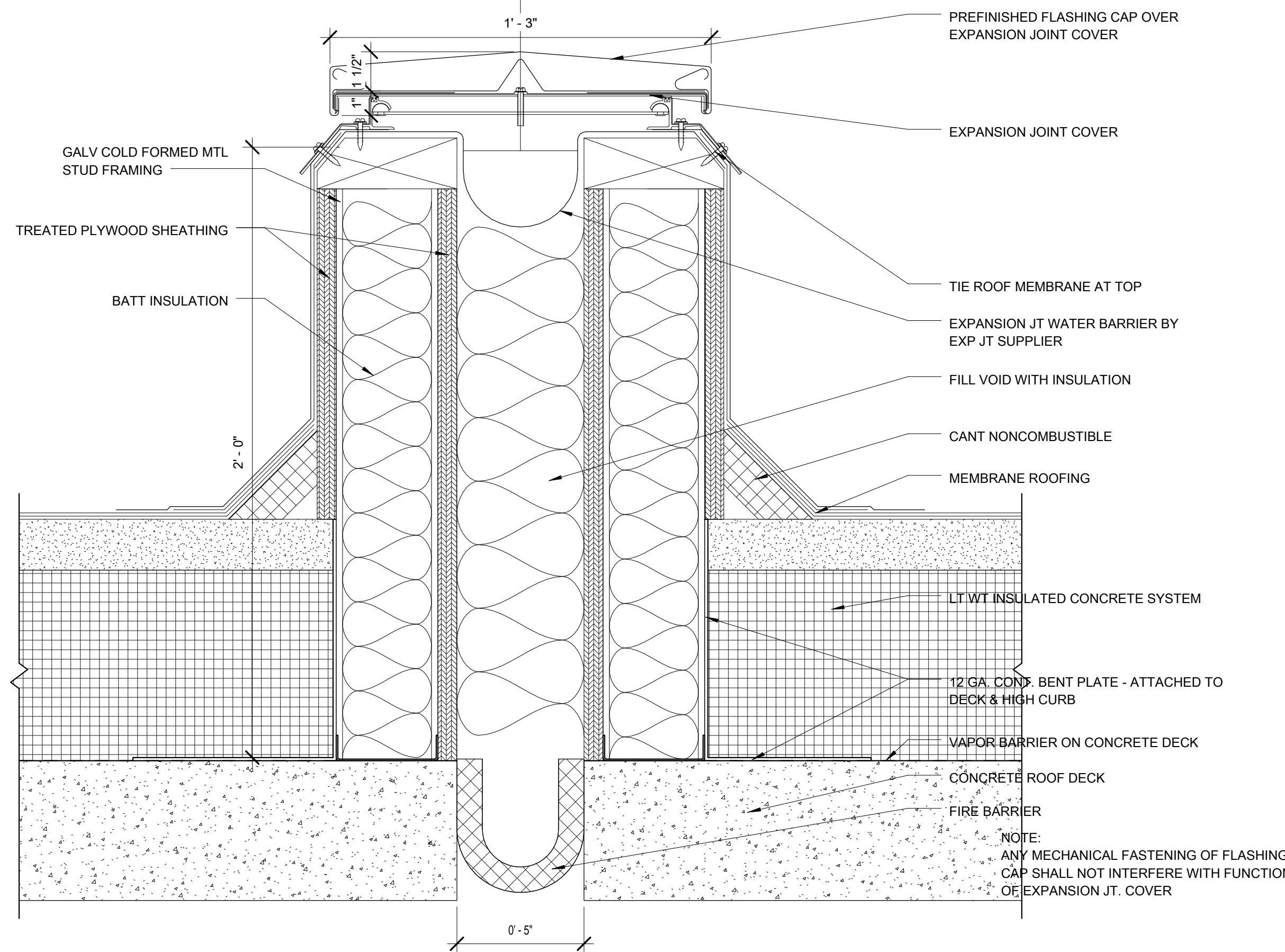
B6 3D VIEW PARAPET AT CURTAIN WALL
SCALE: NTS



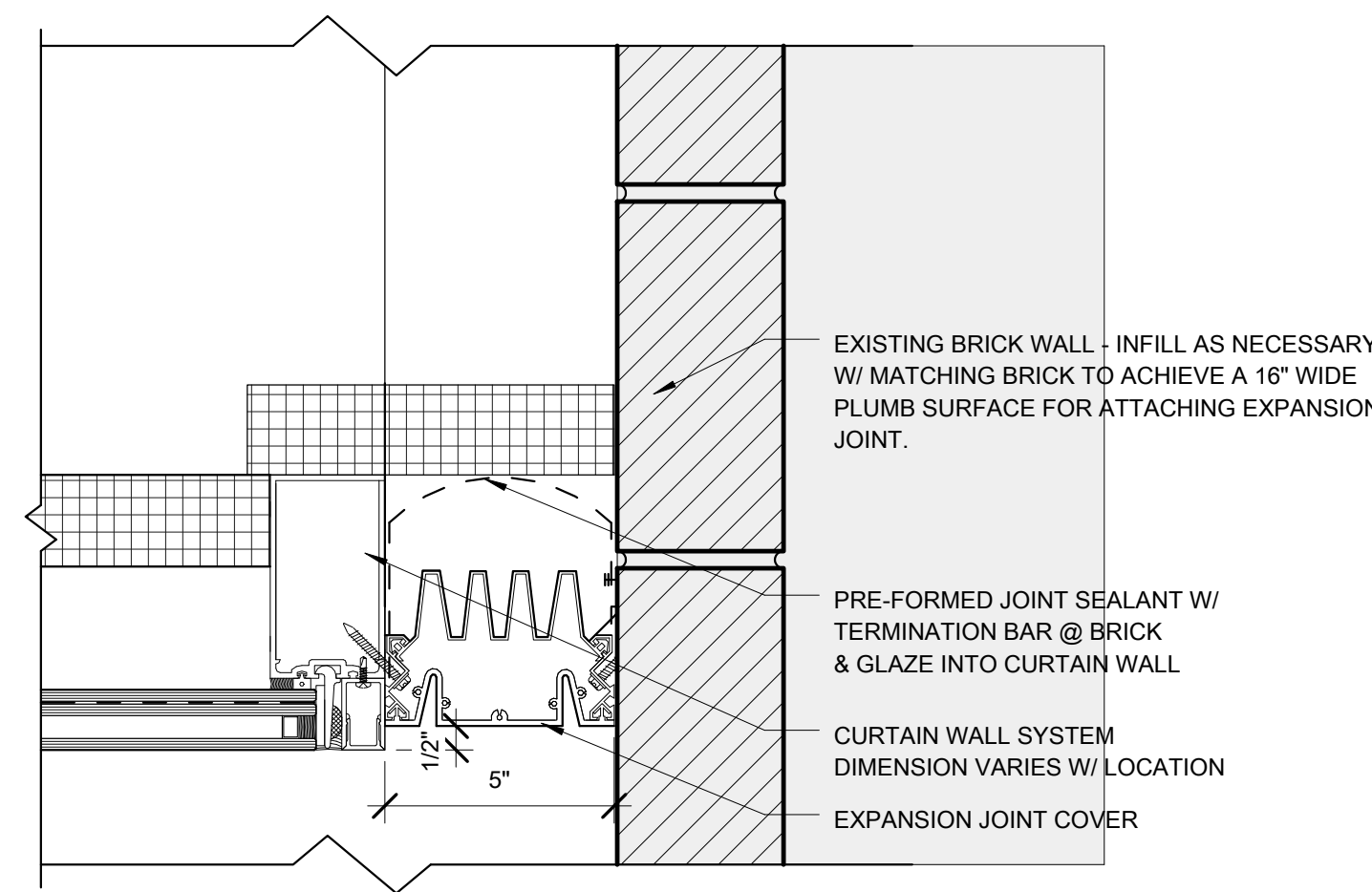
D6 PLAN DETAIL OF BRICK @ MP-1A EXP JOINT
SCALE: 3" = 1'-0"



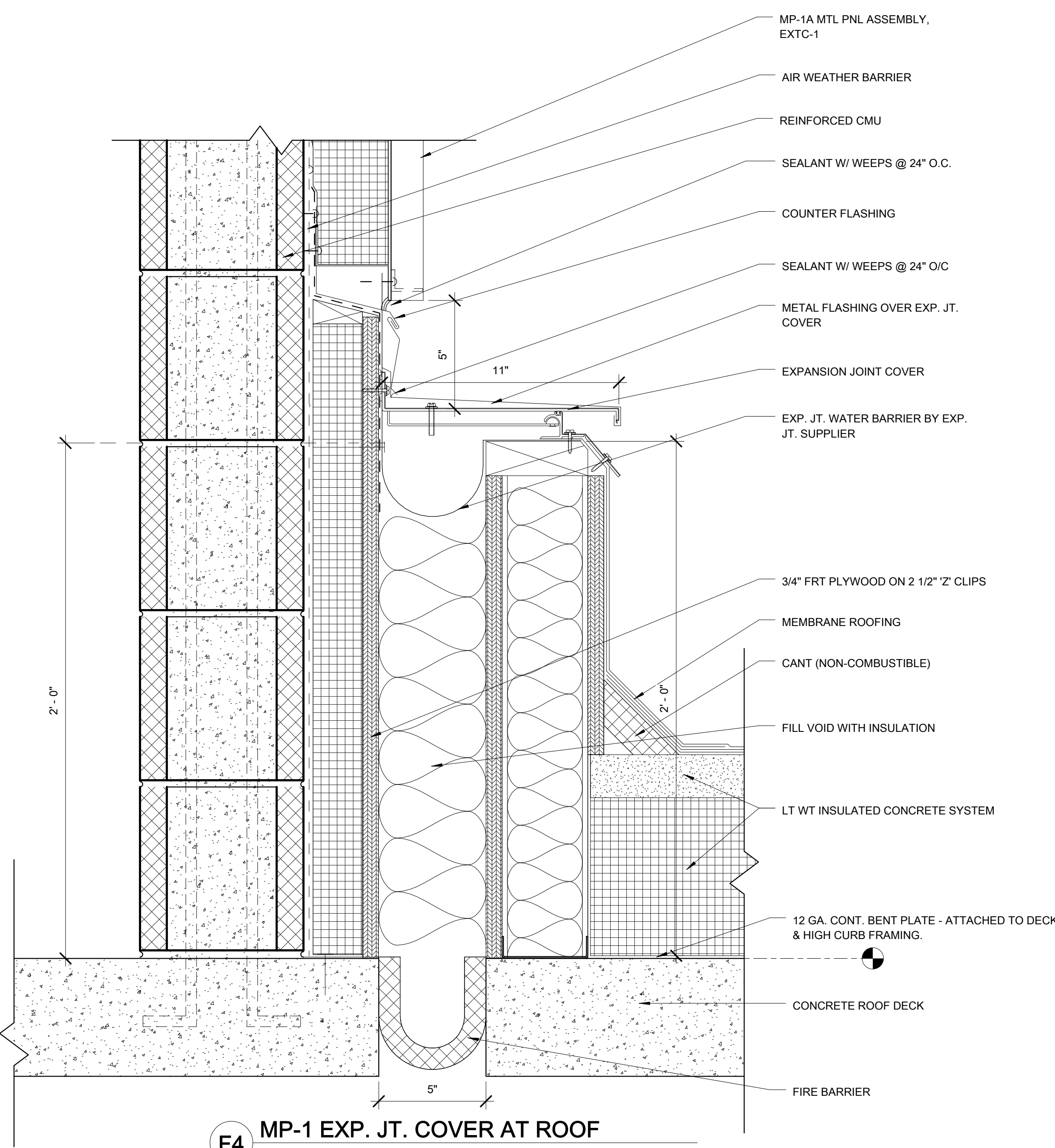
C4 EXPANSION JT ON ROOF
SCALE: 3" = 1'-0"



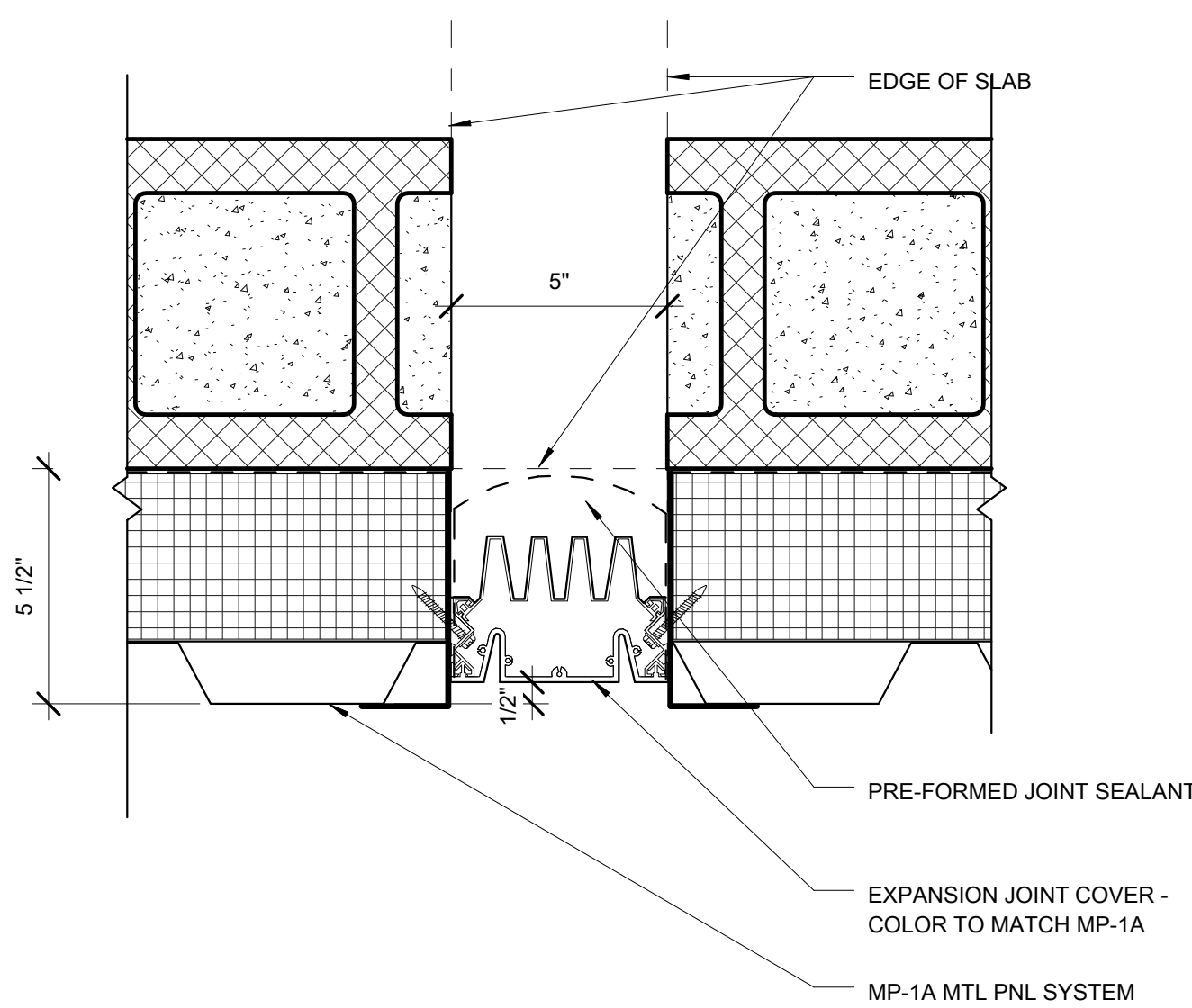
C2 ROOF EXP JT COVER
SCALE: 3" = 1'-0"



D2 PLAN DETAIL OF BRICK @ CW EXP JOINT
SCALE: 3" = 1'-0"

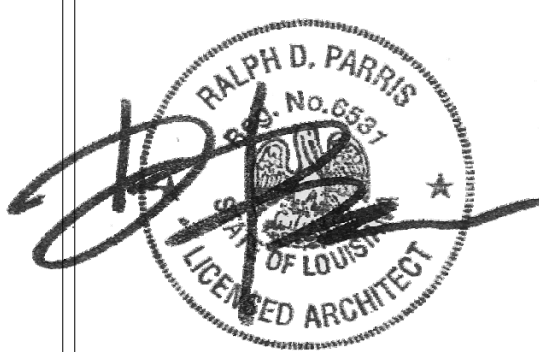


F4 MP-1 EXP. JT. COVER AT ROOF
SCALE: 3" = 1'-0"



F2 PLAN DETAIL - EXP. JT. @ GRID 'F'
SCALE: 3" = 1'-0"

CONSULTANTS:	
DESIGN ASSOCIATES / PARKING	
CODE CONSULTANTS, INC. / CODE CONSULTANT	
THE SEXTANT GROUP / AV & ACOUSTICAL	
HAMMER DESIGN ASSOCIATES / FOOD SERVICE	
PYBURN & ODOM / ABATEMENT	
TATA & HOWARD / TANK CONSULTANT	
I.S.C. GROUP, INC. / IRRIGATION	
DAN EUSER WATER ARCHITECTURE, INC. / WATER FEATURE	
REVISIONS:	
DATE	



ARCHITECT/ENGINEERS:

studio **NOVA**

SCHRENK & PETERSON CONSULTING ENGINEERS / CIVIL

KORDA/NEMETH ENGINEERING / STRUCTURAL

BR+A CONSULTING ENGINEERS / MECH. ELECT. PLUMBING, LOW VOLTAGE

ARCHITECTURAL ENGINEERING / PLUMBING

SCALES ASSOCIATES / FIRE PROTECTION

DRAWING TITLE

EXTERIOR DETAILS - MOVEMENT JOINTS

APPROVED: PROJECT DIRECTOR

John Sanders

PROJECT TITLE

SLVHCS REPLACEMENT MEDICAL CENTER PROJECT

LOCATION

NEW ORLEANS, LOUISIANA

DATE

July 16, 2012

CHECKED

JR

DRAWN

CN/AL

PROJECT NUMBER

100342.00

BUILDING NUMBER

8

DOCUMENT SET PACKAGE

WP_09B

DRAWING NUMBER

8AS541

CONSTRUCTION DOCUMENTS 1

FULLY SPRINKLERED

OFFICE OF CONSTRUCTION AND FACILITIES MANAGEMENT

Department of Veterans Affairs