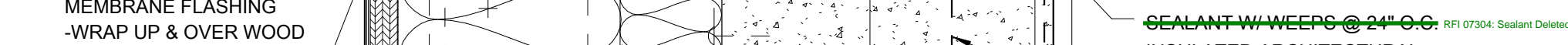
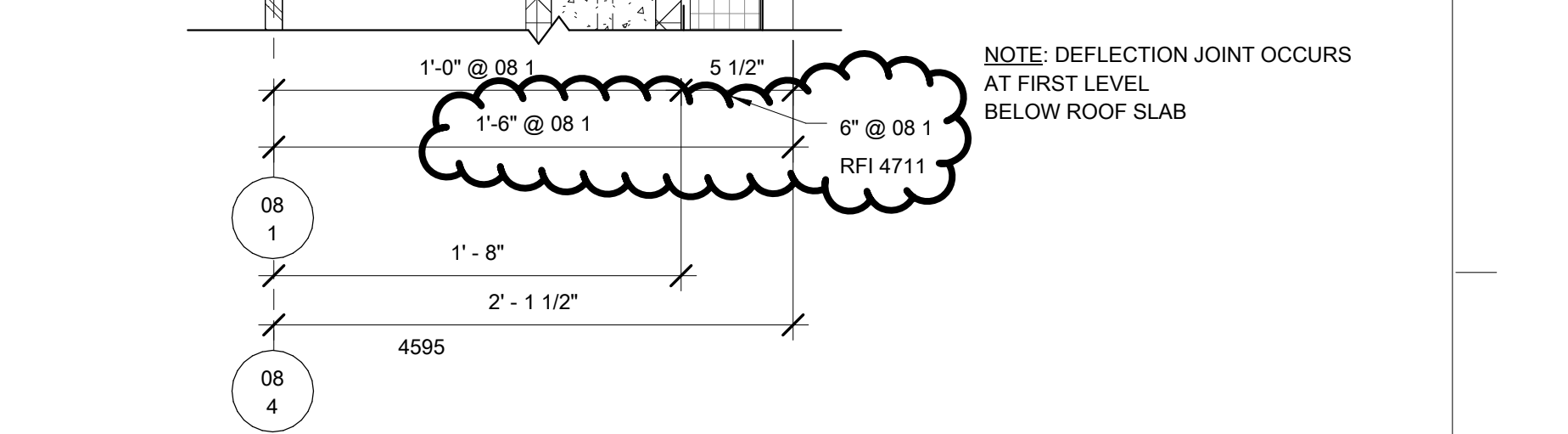




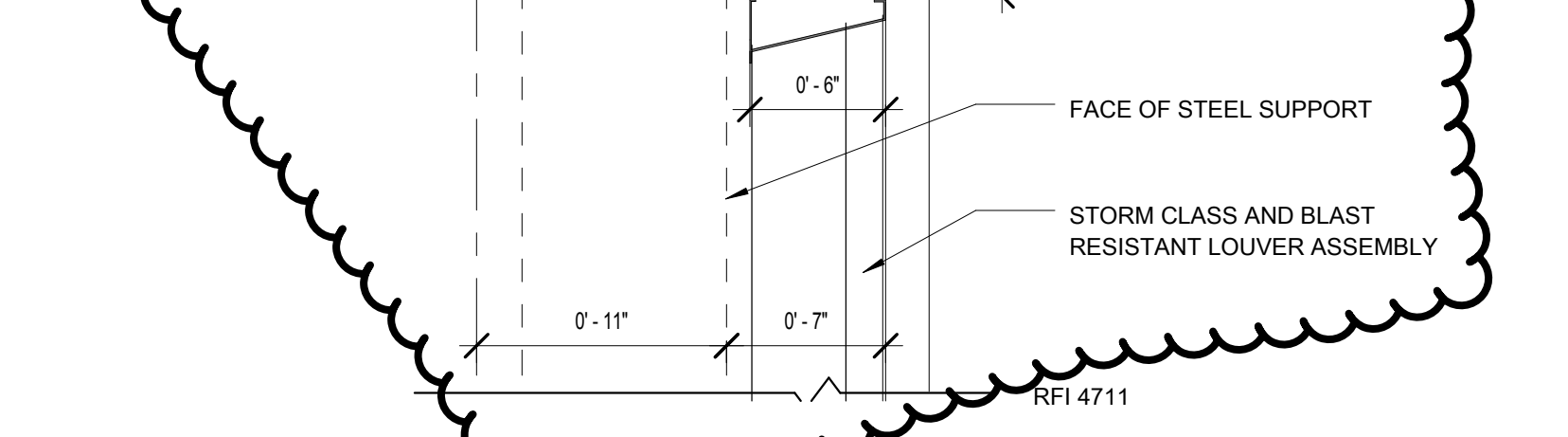
B6 **COPING DETAIL @ PC-1**
SCALE: 3" = 1'-0"



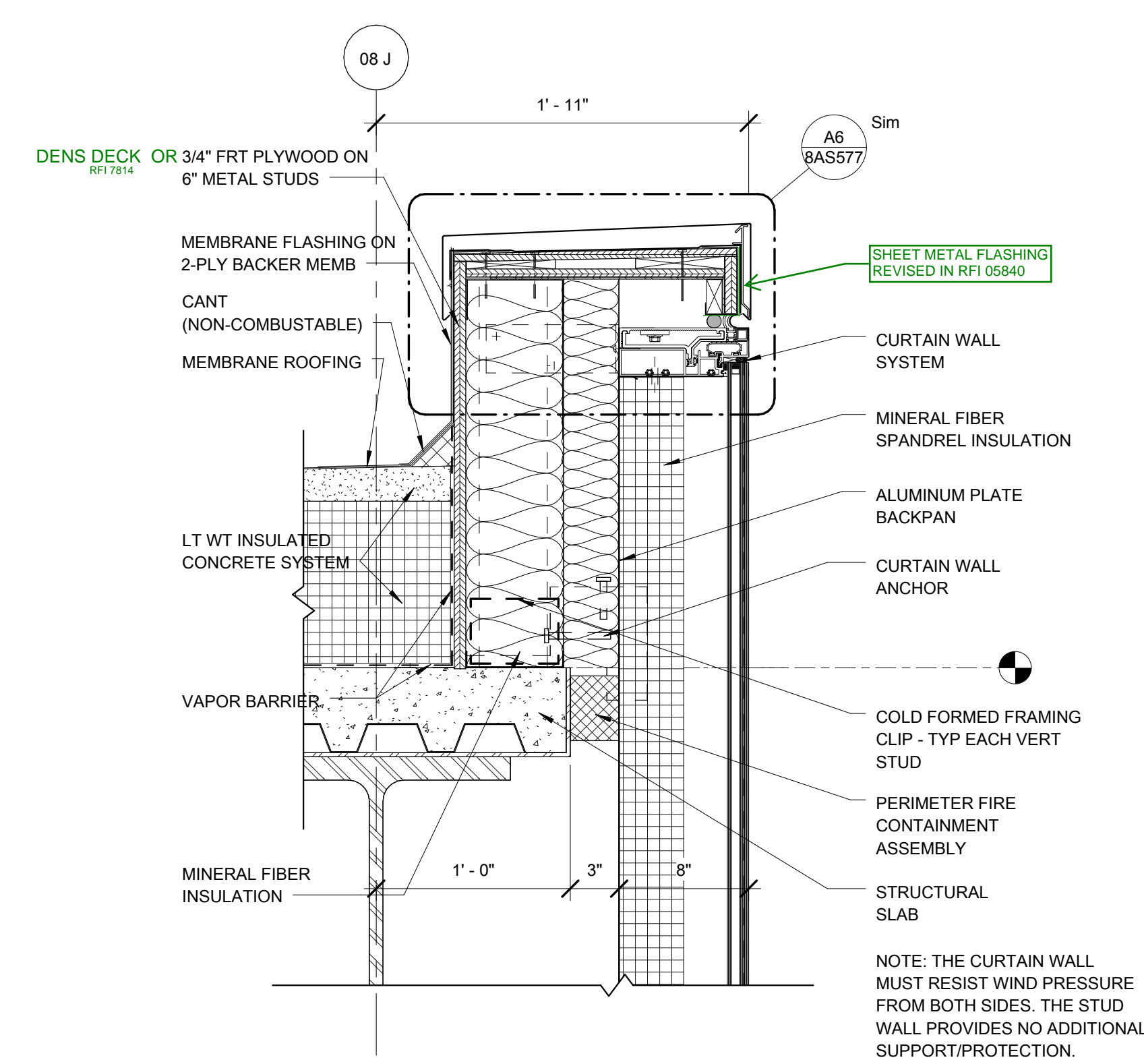
B1 PARAPET @ MP-1
SCALE: 1 1/2" = 1'-0"



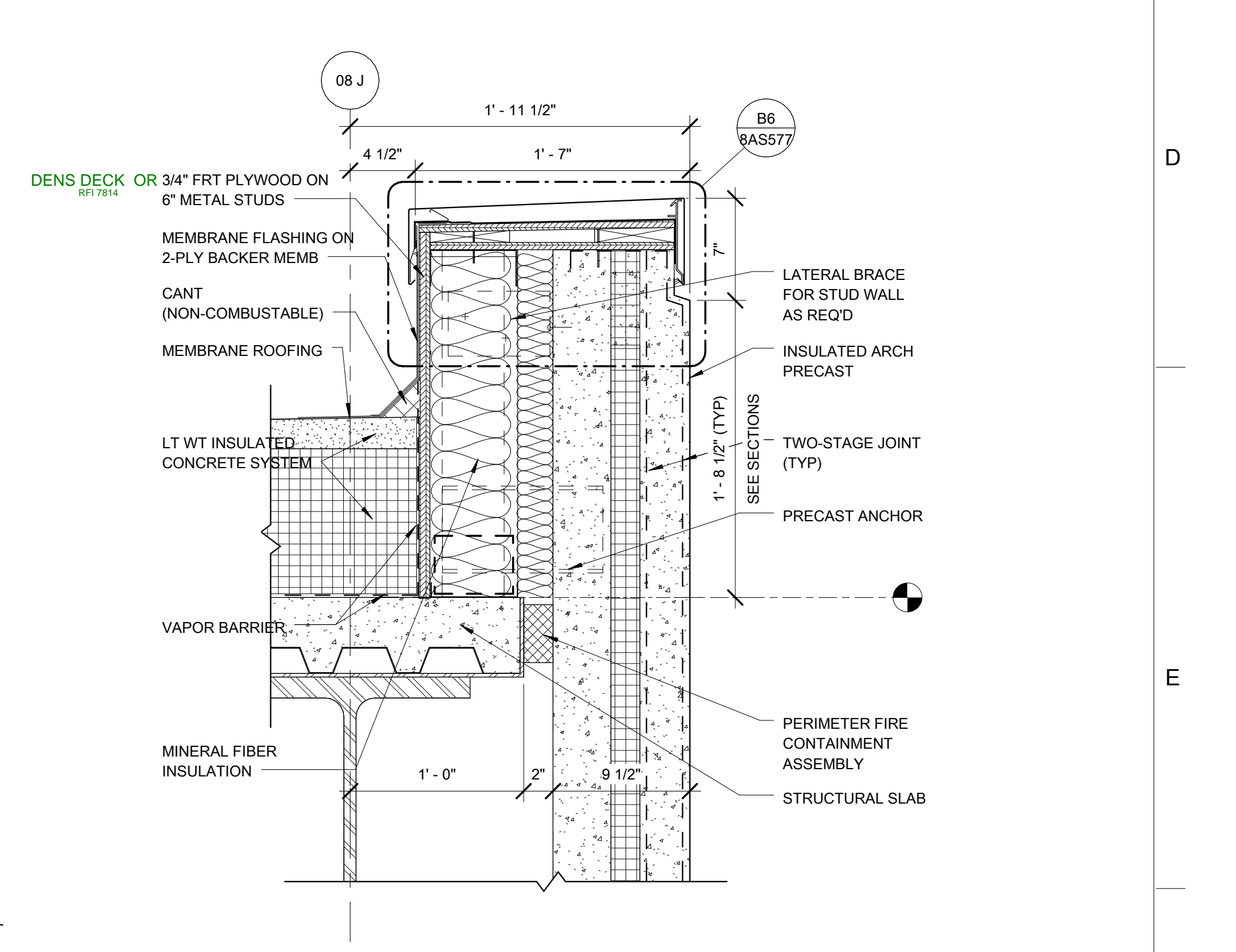
B2 PARAPET @ LOUVER
SCALE: 1 1/2" = 1'-0"



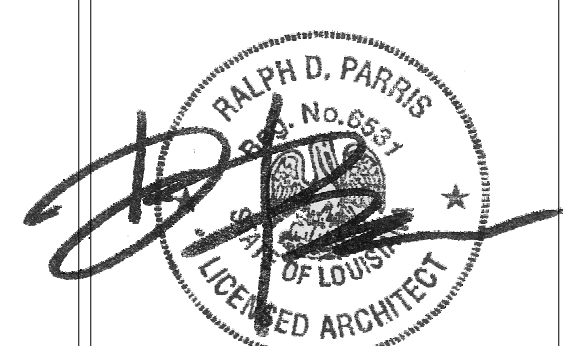
B4 PARAPET @ CW-1 ADJ TO PC-1
SCALE: 1 1/2" = 1'-0"



B3 PARAPET @ PC-1
SCALE: 1 1/2" = 1'-0"

VA FORM 08-6231

CONSULTANTS:
DESMAN ASSOCIATES / PARKING
CODE CONSULTANTS, INC. / CODE CONSULTANT
THE SEXTANT GROUP / AV & ACOUSTICAL
HAMMER DESIGN ASSOCIATES / FOOD SERVICE
PYBURN & ODOM / ABATEMENT
TATA & HOWARD / TANK CONSULTANT
I.S.C. GROUP, INC. / IRRIGATION
DAN EUSER WATER ARCHITECTURE, INC. / WATER FEATURE



studio **NOVA**
 SCHRENK & PETERSON CONSULTING ENGINEERS / CIVIL
 KORDA/NEMETH ENGINEERING / STRUCTURAL
 BR+A CONSULTING ENGINEERS / MECH, ELECT, PLUMBING, LOW VOLTAGE
 ARCHITECTURAL ENGINEERING / PLUMBING
 SCALES ASSOCIATES / FIRE PROTECTION

DRAWING TITLE
EXTERIOR DETAILS-ROOF PARAPET

APPROVED: PROJECT DIRECTOR

PROJECT TITLE	SLVHCS REPLACEMENT MEDICAL CENTER PROJECT
---------------	---

LOCATION	NEW ORLEANS, LOUISIANA
----------	------------------------

DATE
July 16, 2012

SIANA	
CHECKED JR	DRAWN DS/CN

PROJECT NUMBER	BUILDING NUMBER
100342.00	8
DOCUMENT SET PACKAGE	
WP_09B	

	DRAWING NUMBER

8AS577

OFFICE OF
CONSTRUCTION
AND FACILITIES
MANAGEMENT

