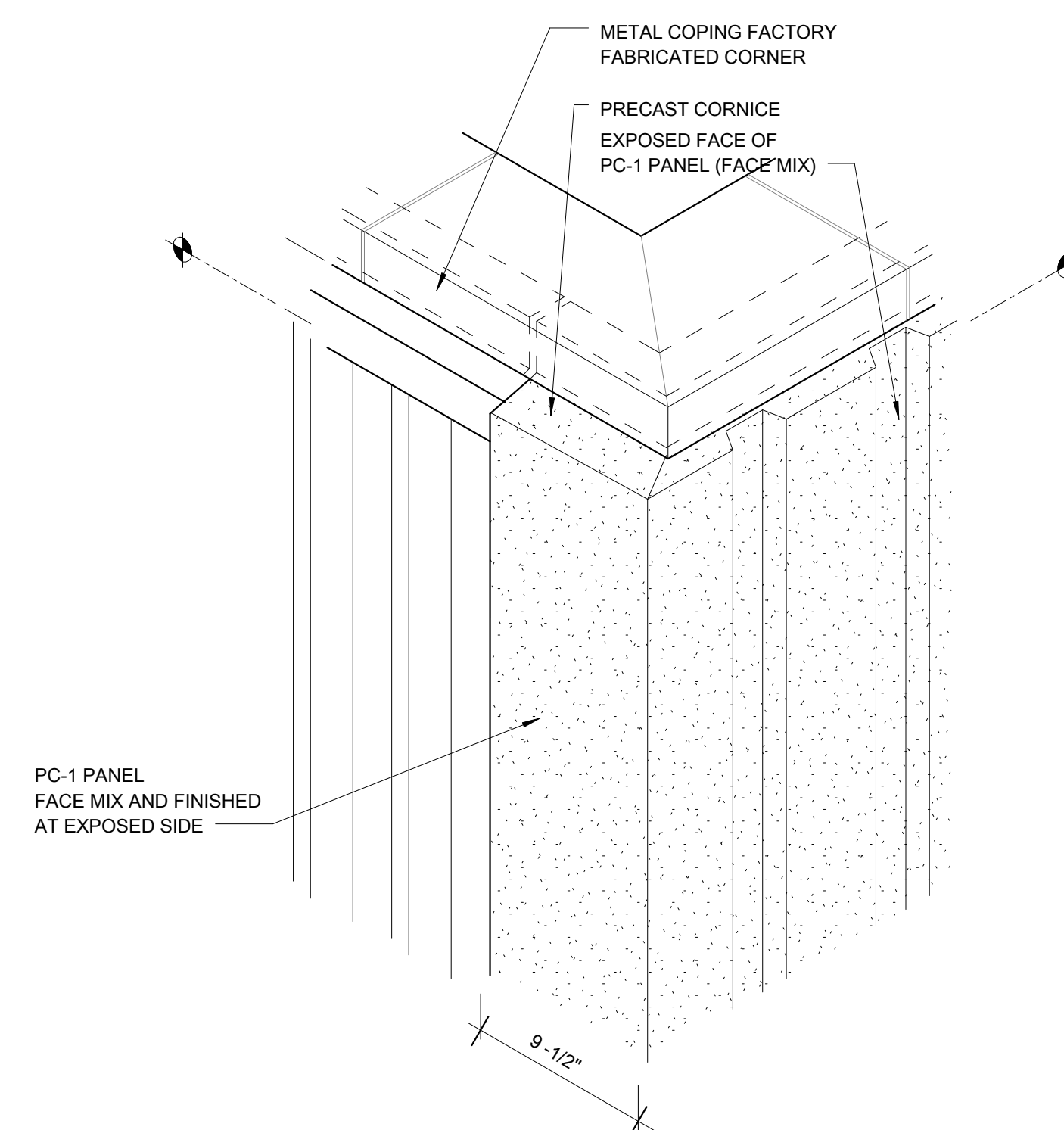
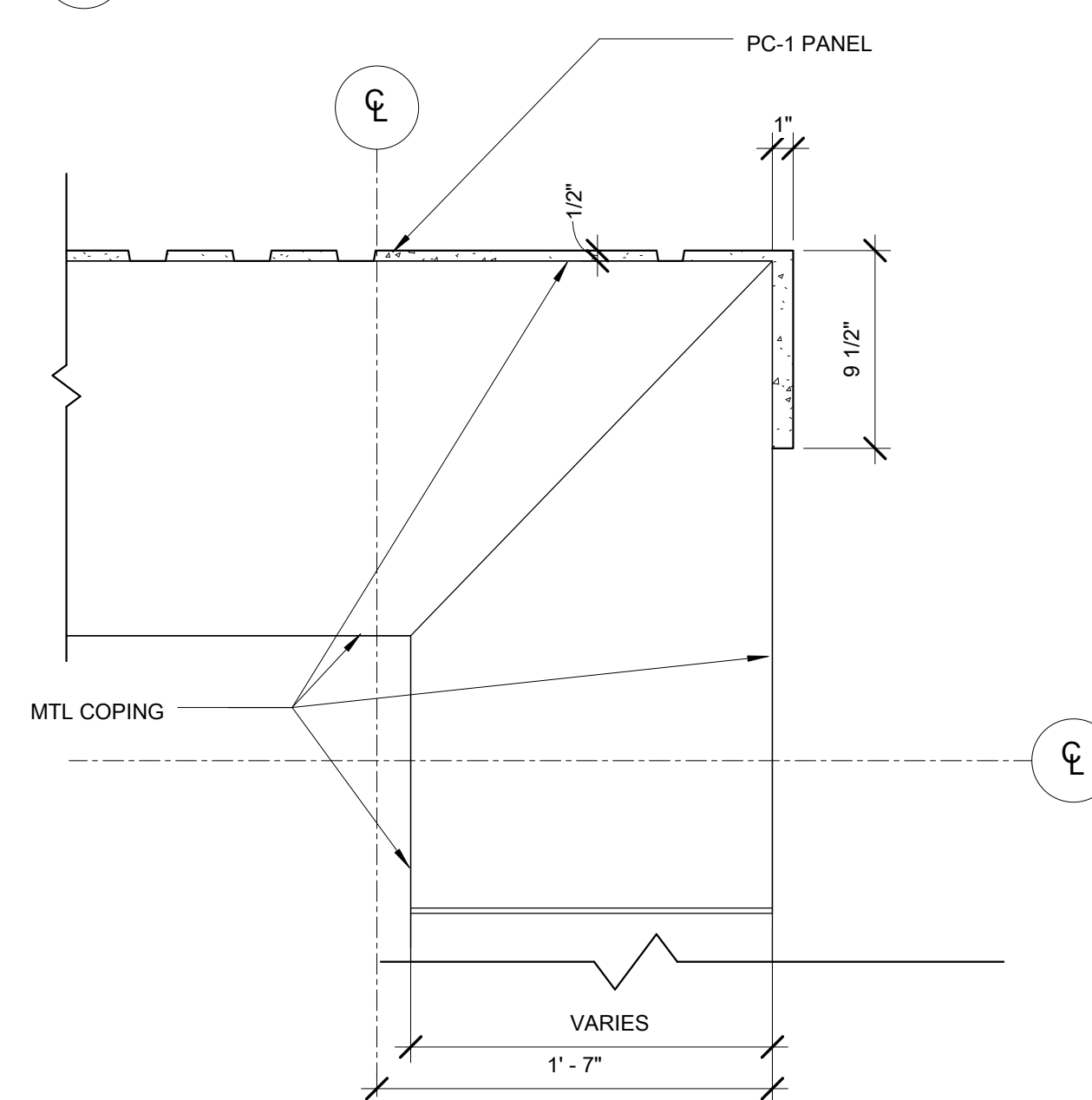


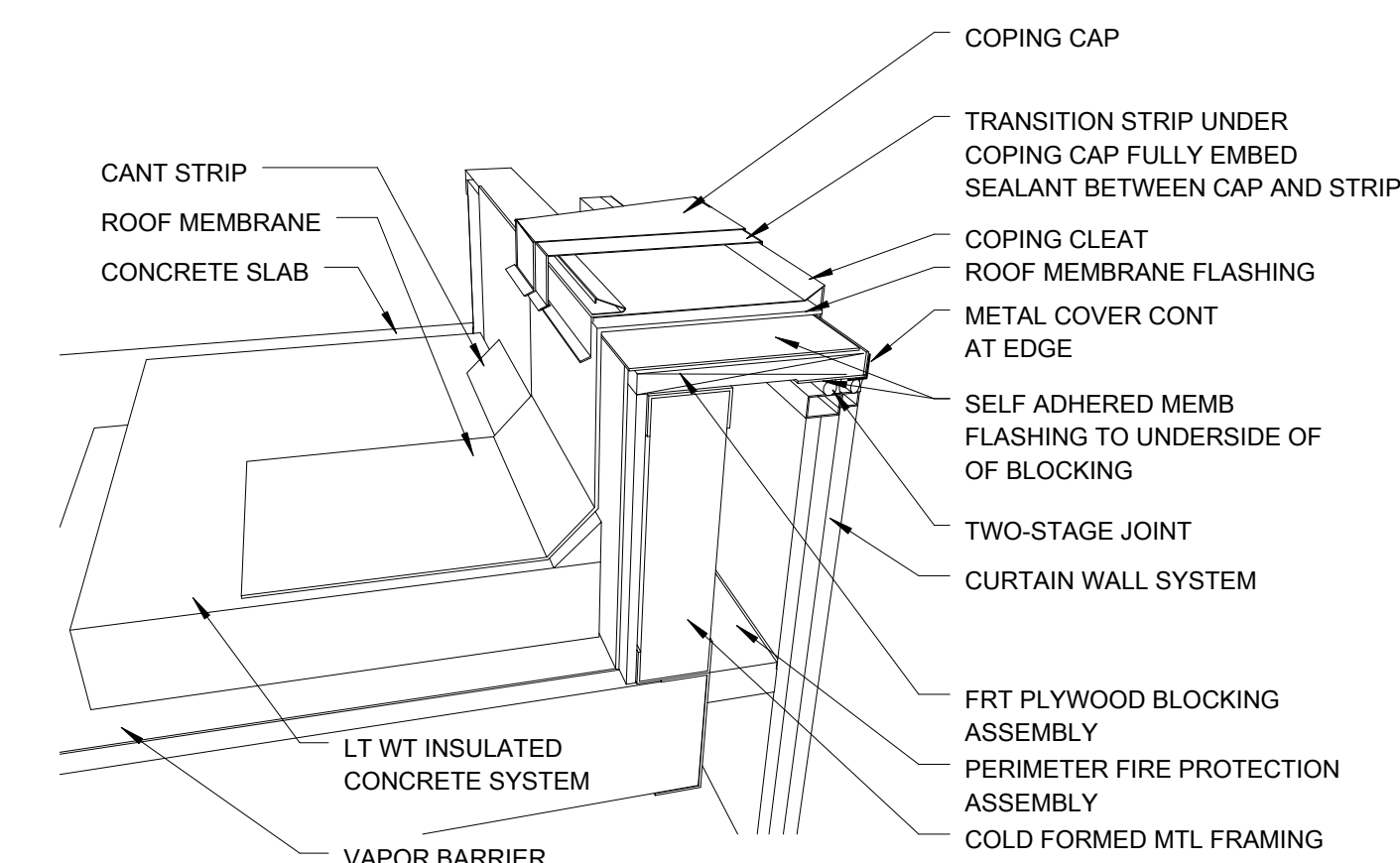
B4 END OF UPPER PC-1/CORNICE DETAIL
SCALE: 3" = 1'-0"



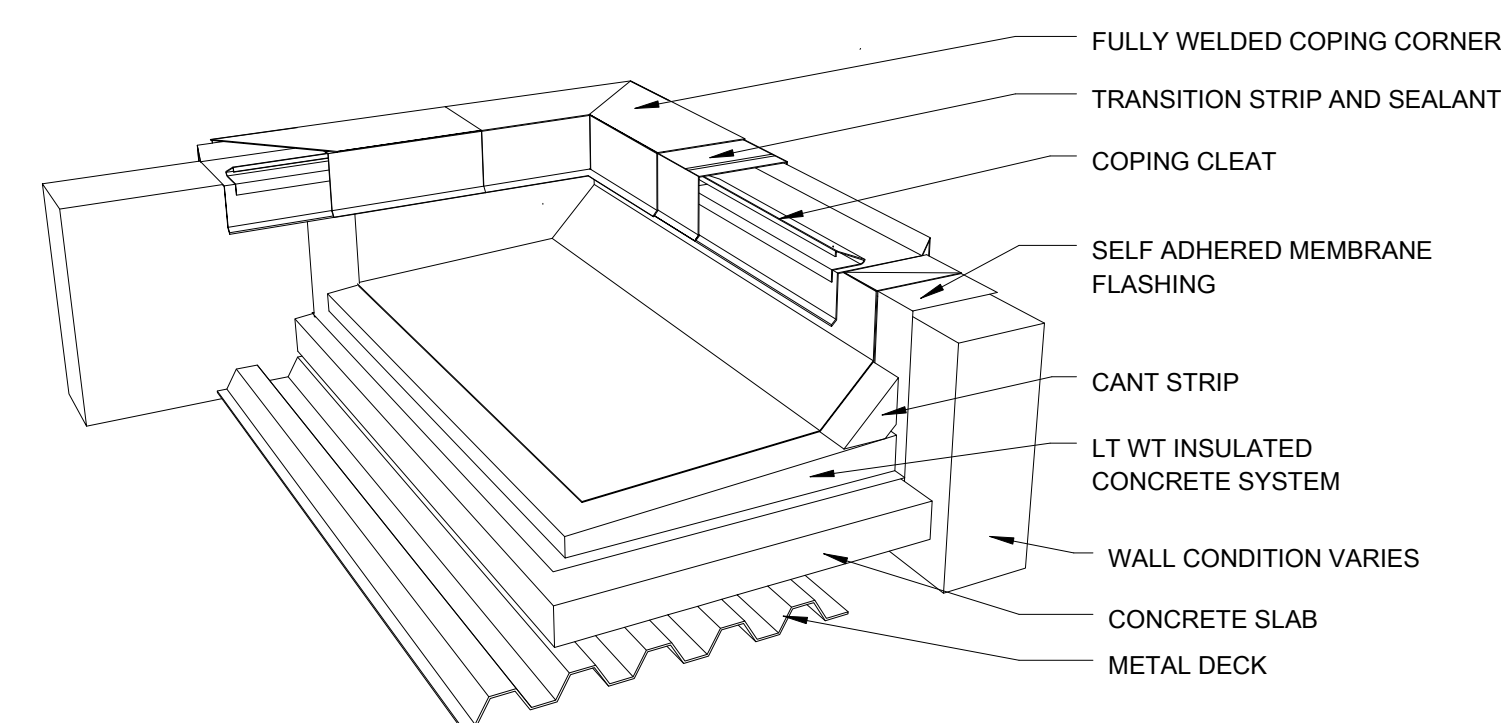
D4 **AXON DETAIL_PC-1/CORNICE/COPING**
SCALE: NTS



F3 PLAN DETAIL_PC-1/CORNICE HIGH
SCALE: 1 1/2" = 1'-0"



B2 3D VIEW PARAPET AT CURTAIN WALL
SCALE: NTS



C2 3D VIEW TYPICAL PREFABRICATED CORNER
SCALE: NTS

[illegible]

ARCHITECT/ENGINEERS:

studio **NOVA**

SCHRENK & PETERSON CONSULTING ENGINEERS / CIVIL
KORDA/NEMETH ENGINEERING / STRUCTURAL
BR+A CONSULTING ENGINEERS / MECH, ELECT, PLUMBING, LOW VOLTAGE
ARCHITECTURAL ENGINEERING / PLUMBING
SCALES ASSOCIATES / FIRE PROTECTION

DRAWING TITLE
EXTERIOR DETAILS-ROOF/WALL

APPROVED: PROJECT DIRECTOR

Yadd Tanderis

PROJECT TITLE	SLVHCS REPLACEMENT MEDICAL CENTER PROJECT
---------------	---

LOCATION
NEW ORLEANS, LOUISIANA

DATE
July 16, 2012

CHECKER
JR

DRAW
BW

PROJECT NUMBER 100342.00	BUILDING NUMBER 8
DOCUMENT SET PACKAGE WP_09B	

DRAWING NUMBER

8AS579

CONSTRUCTION DOCUMENTS 1
FULLY SPRINKLERED

OFFICE OF
CONSTRUCTION
AND FACILITIES
MANAGEMENT

