

A

B

C

D

E

F

ONE INCH = FORTY FEET (1" = 40')

THREE INCHES = ONE FOOT

ONE AND ONE HALF INCHES = ONE FOOT

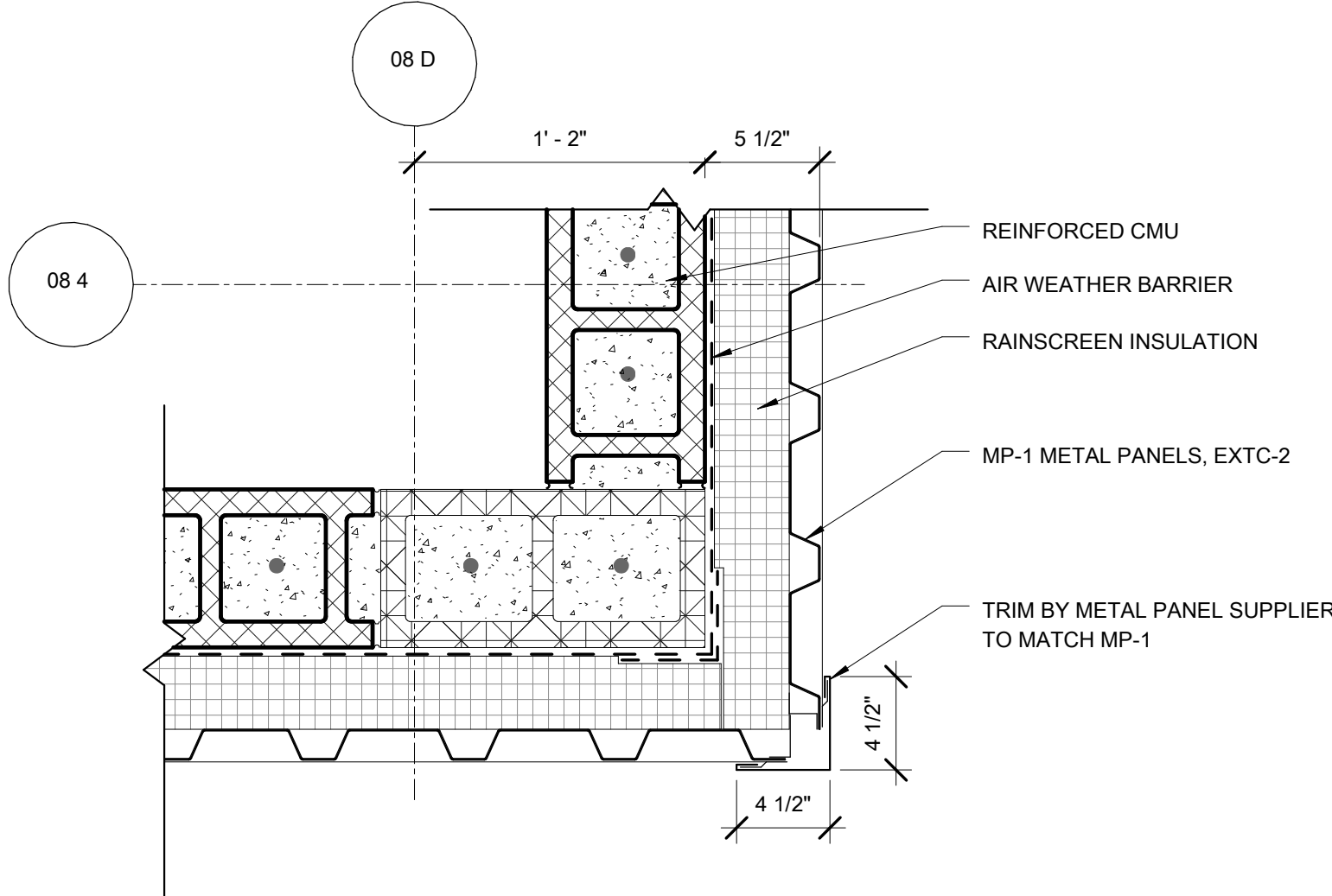
THREE QUARTERS INCH = ONE FOOT

ONE HALF INCH = ONE FOOT

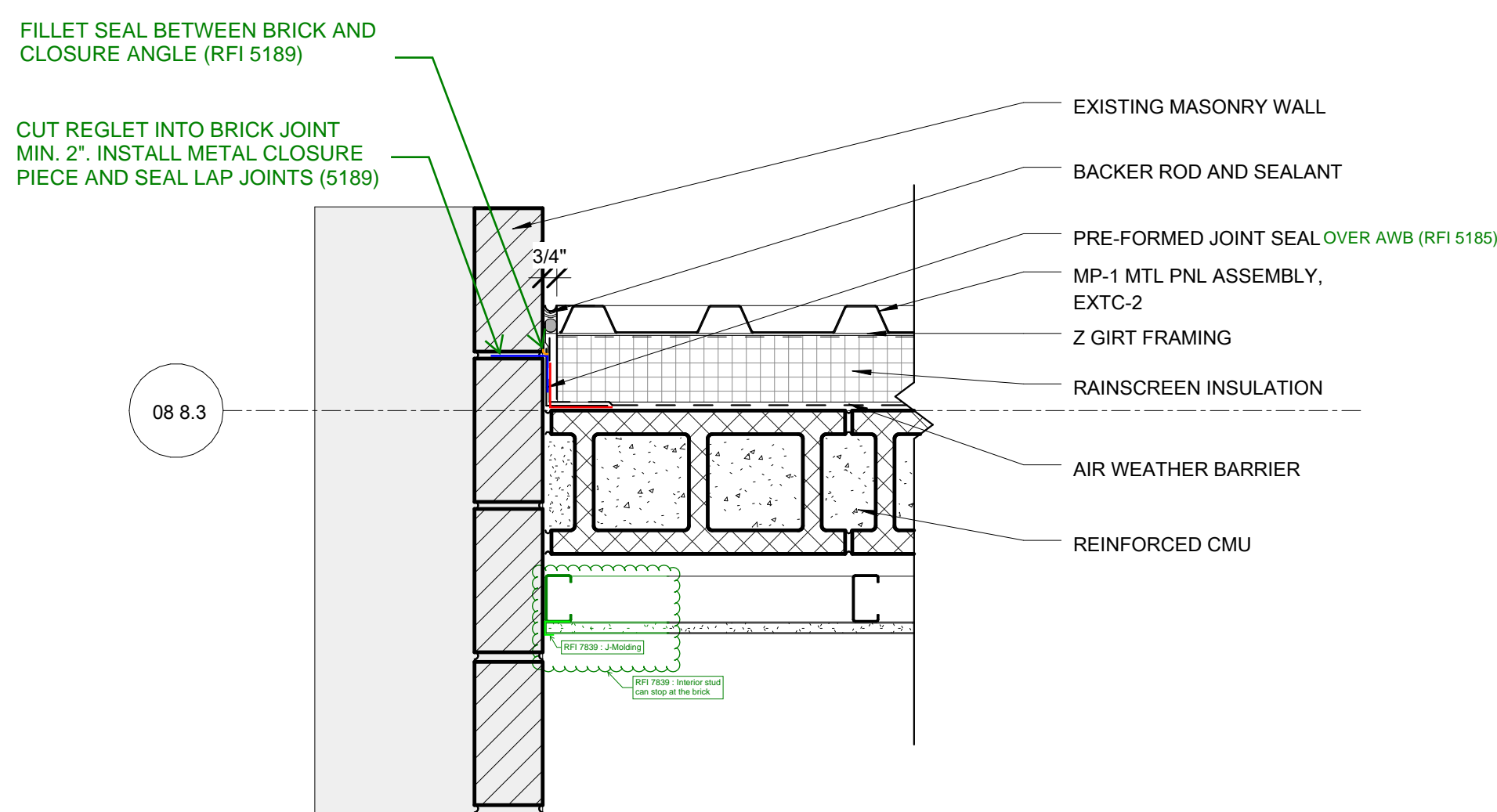
ONE QUARTER INCH = ONE FOOT

ONE EIGHT INCH = ONE FOOT

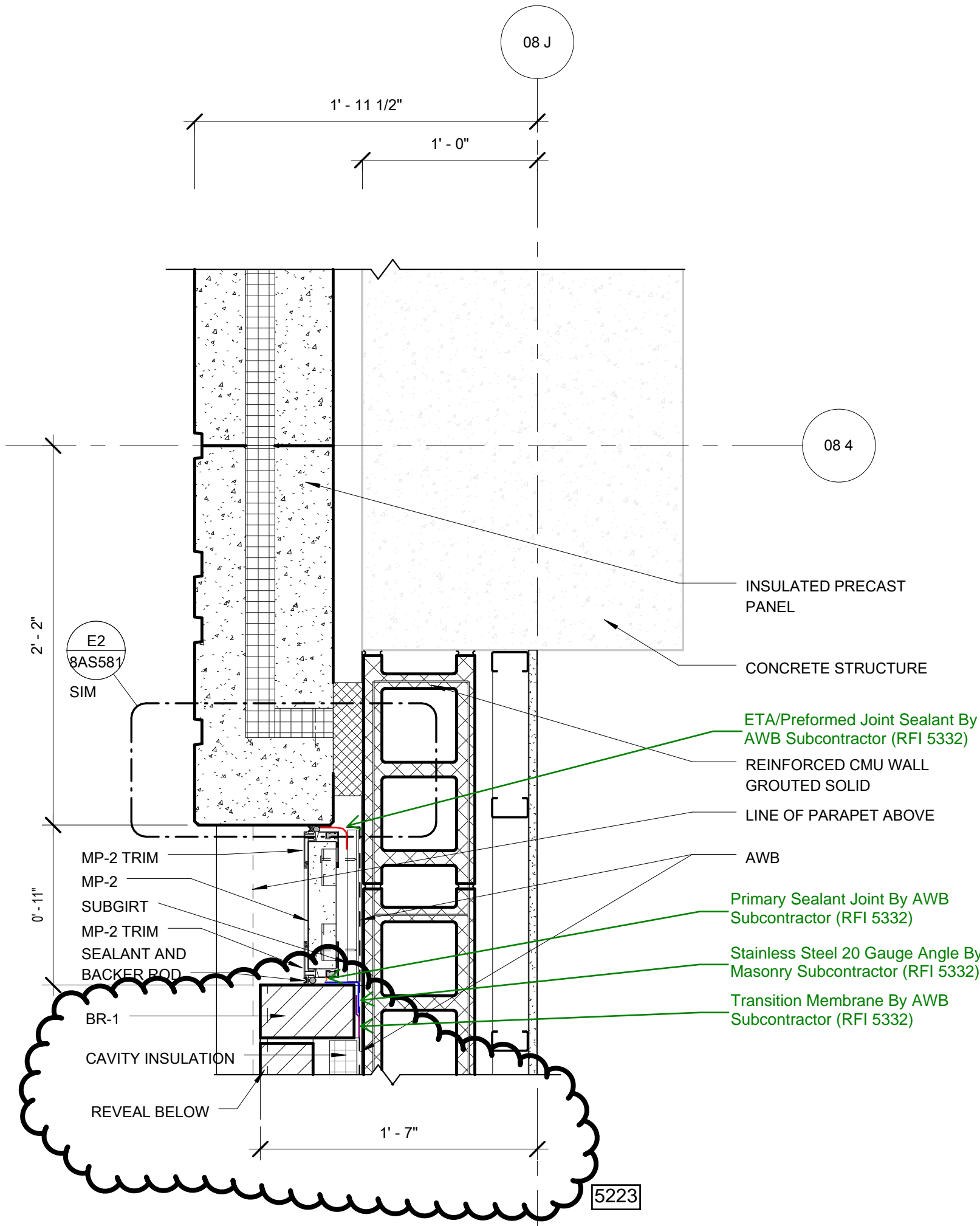
ONE SIXTEENTH INCH = ONE FOOT



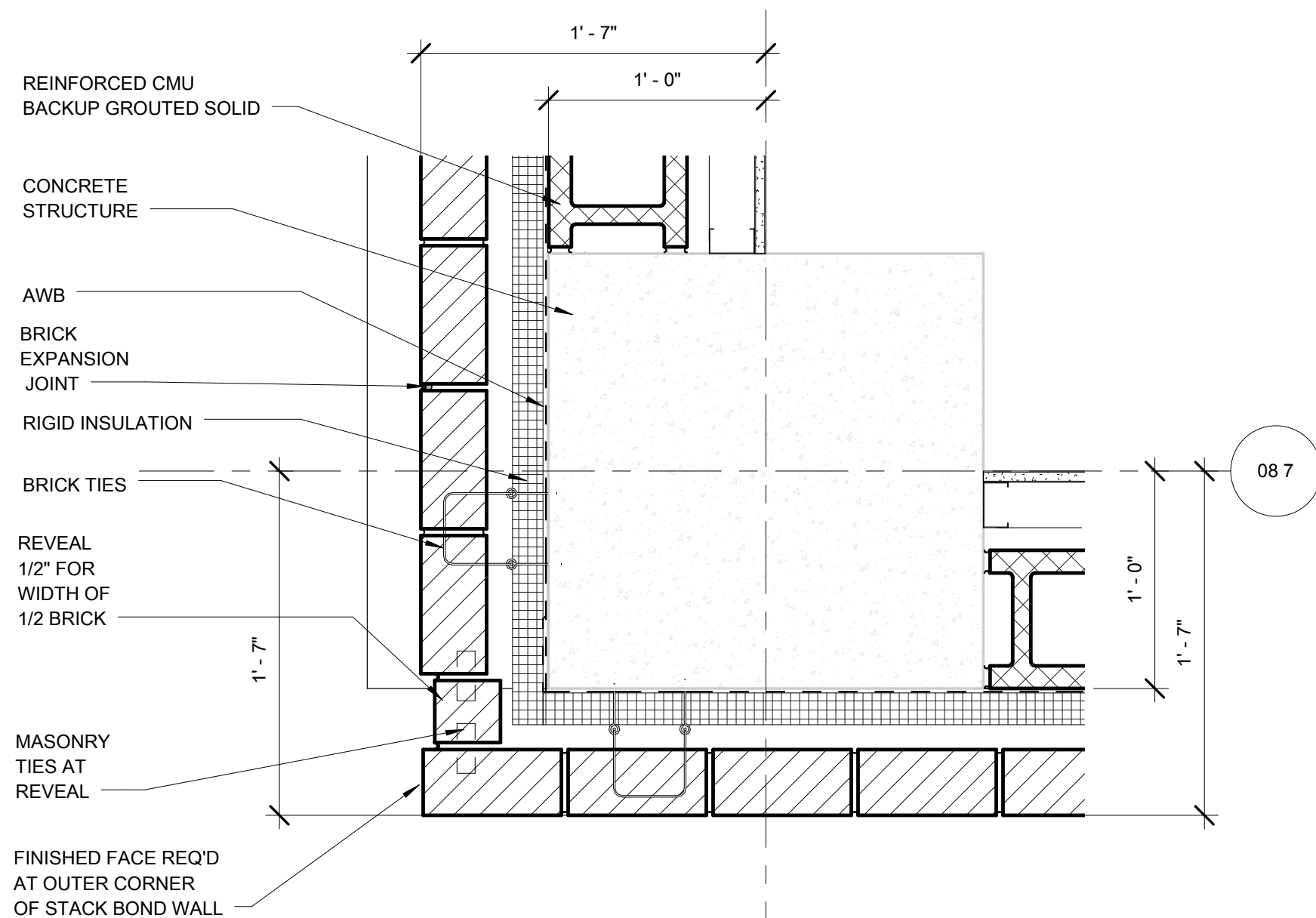
C6 MP-1 OUTSIDE CORNER
SCALE: 1 1/2" = 1'-0"



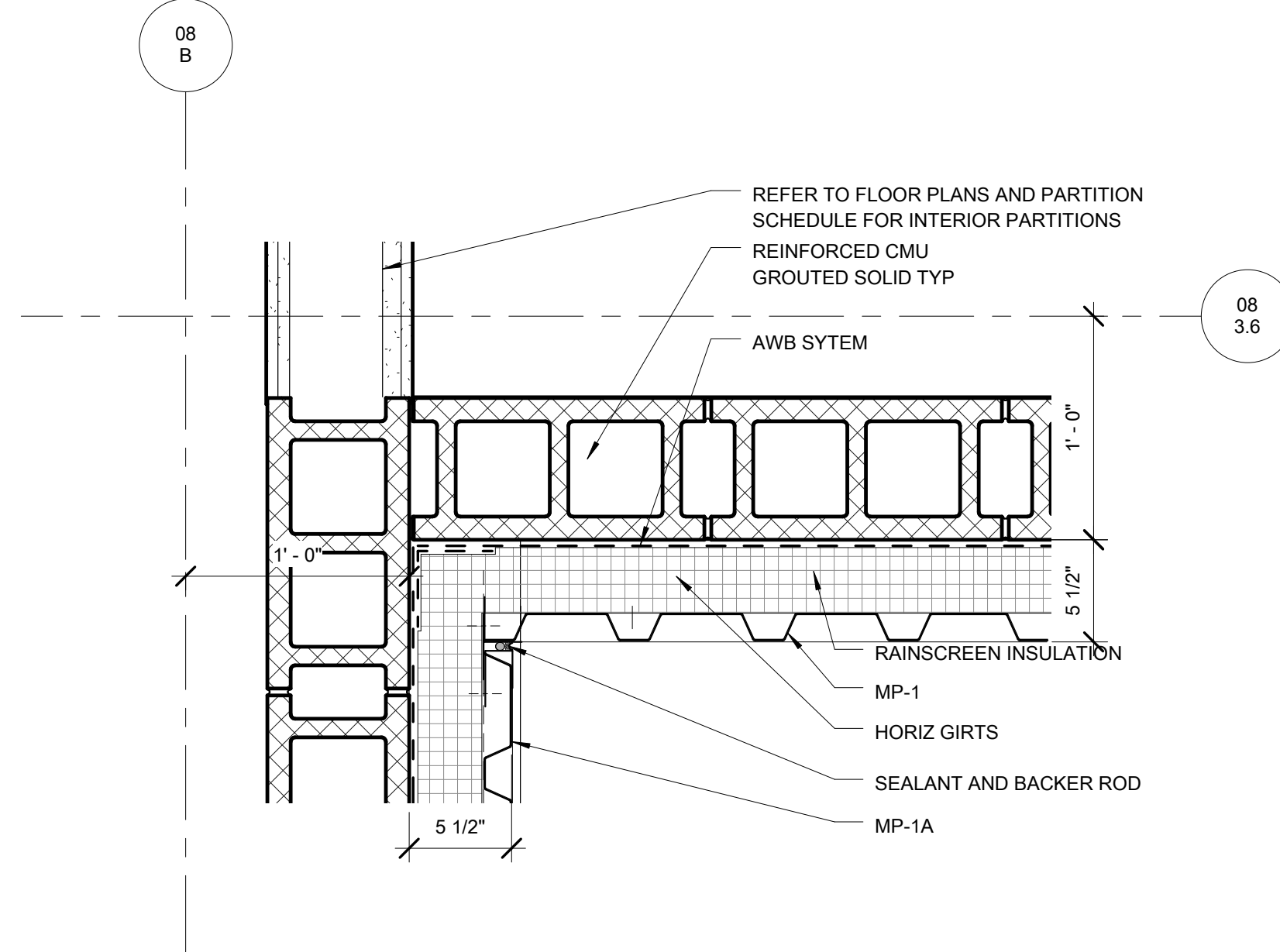
E6 MP-1A CX TO DIXIE
SCALE: 1 1/2" = 1'-0"



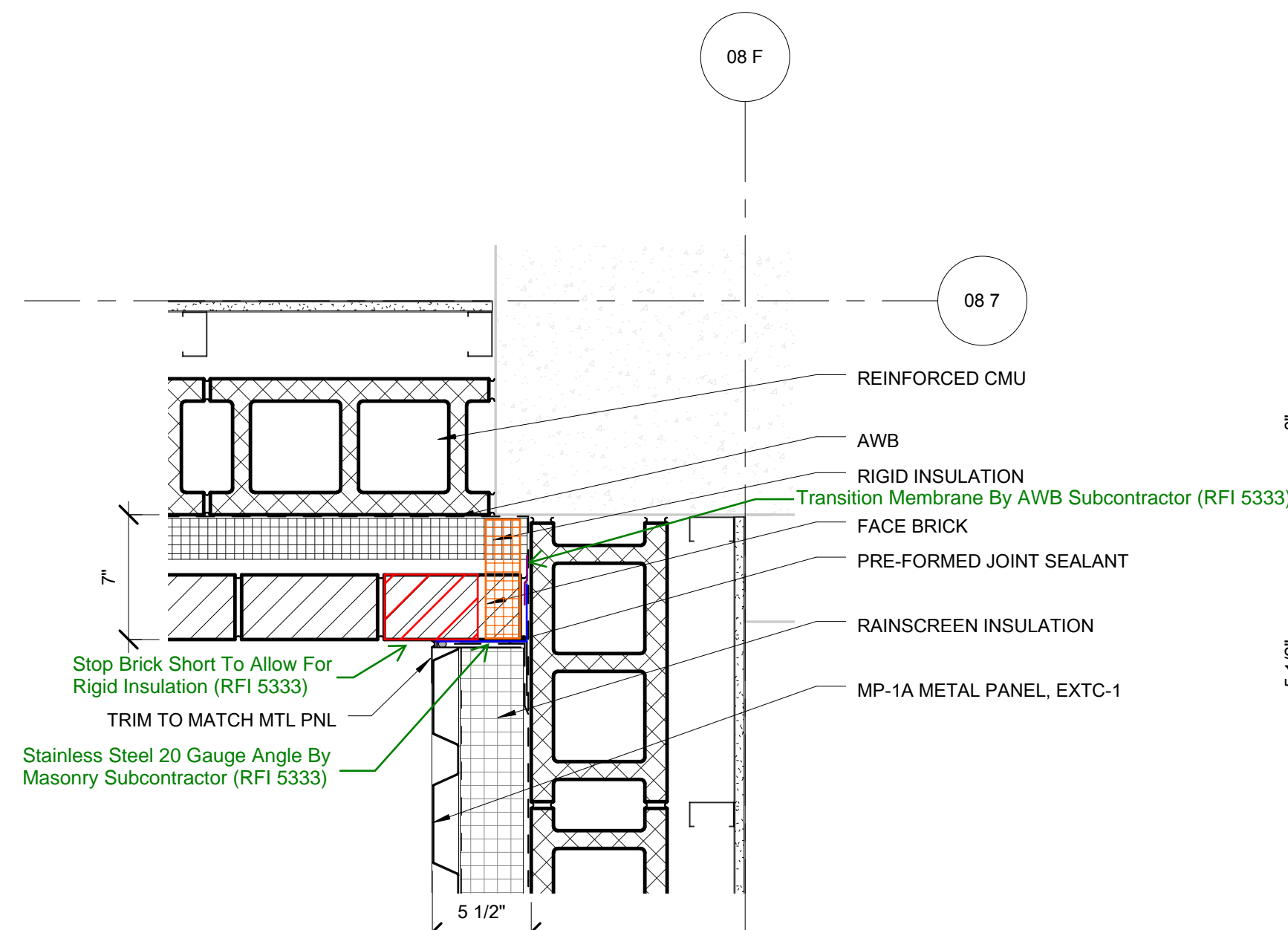
C5 END OF PC WALL
SCALE: 1 1/2" = 1'-0"



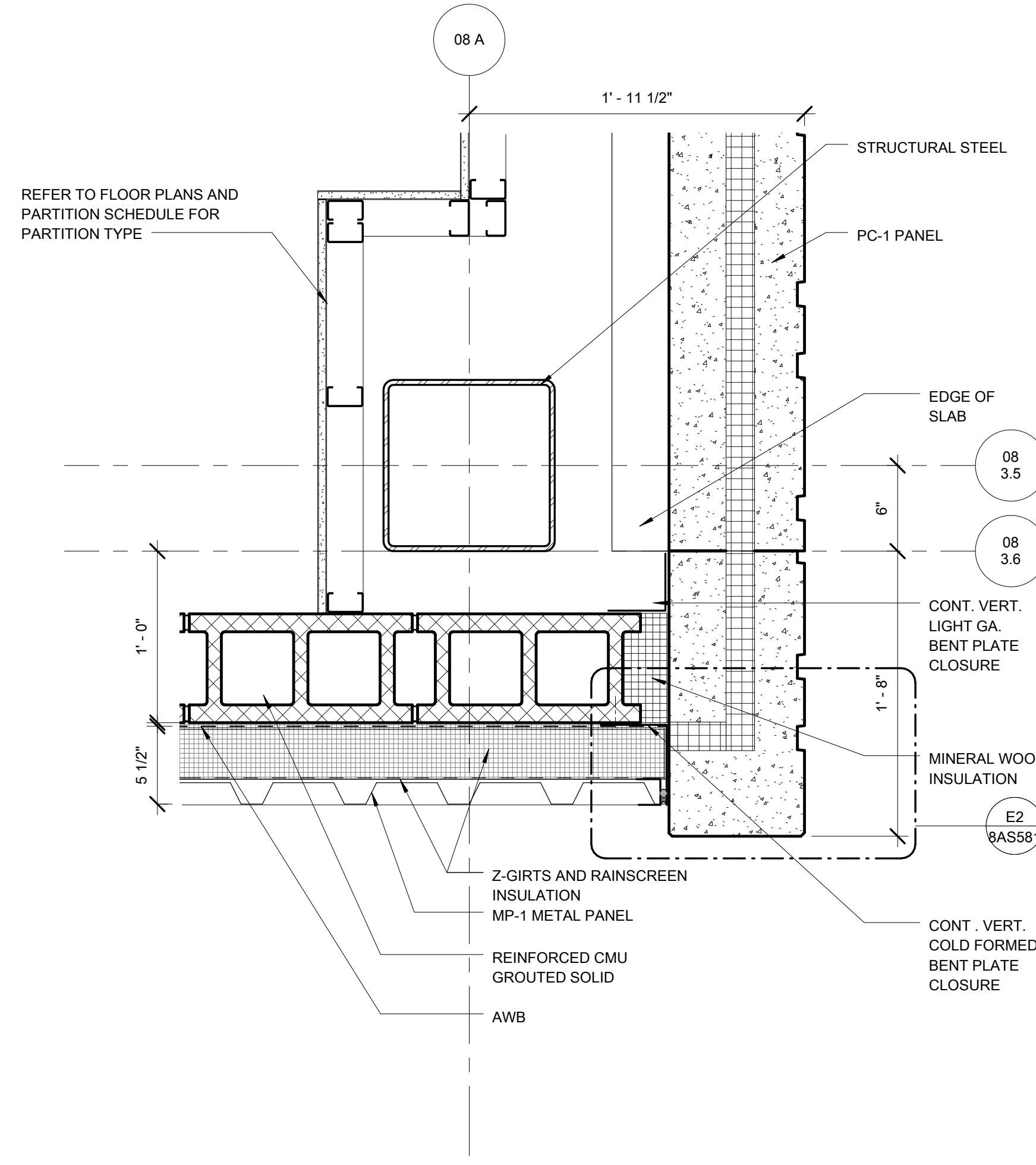
E5 BRICK OUTSIDE CORNER
SCALE: 1 1/2" = 1'-0"



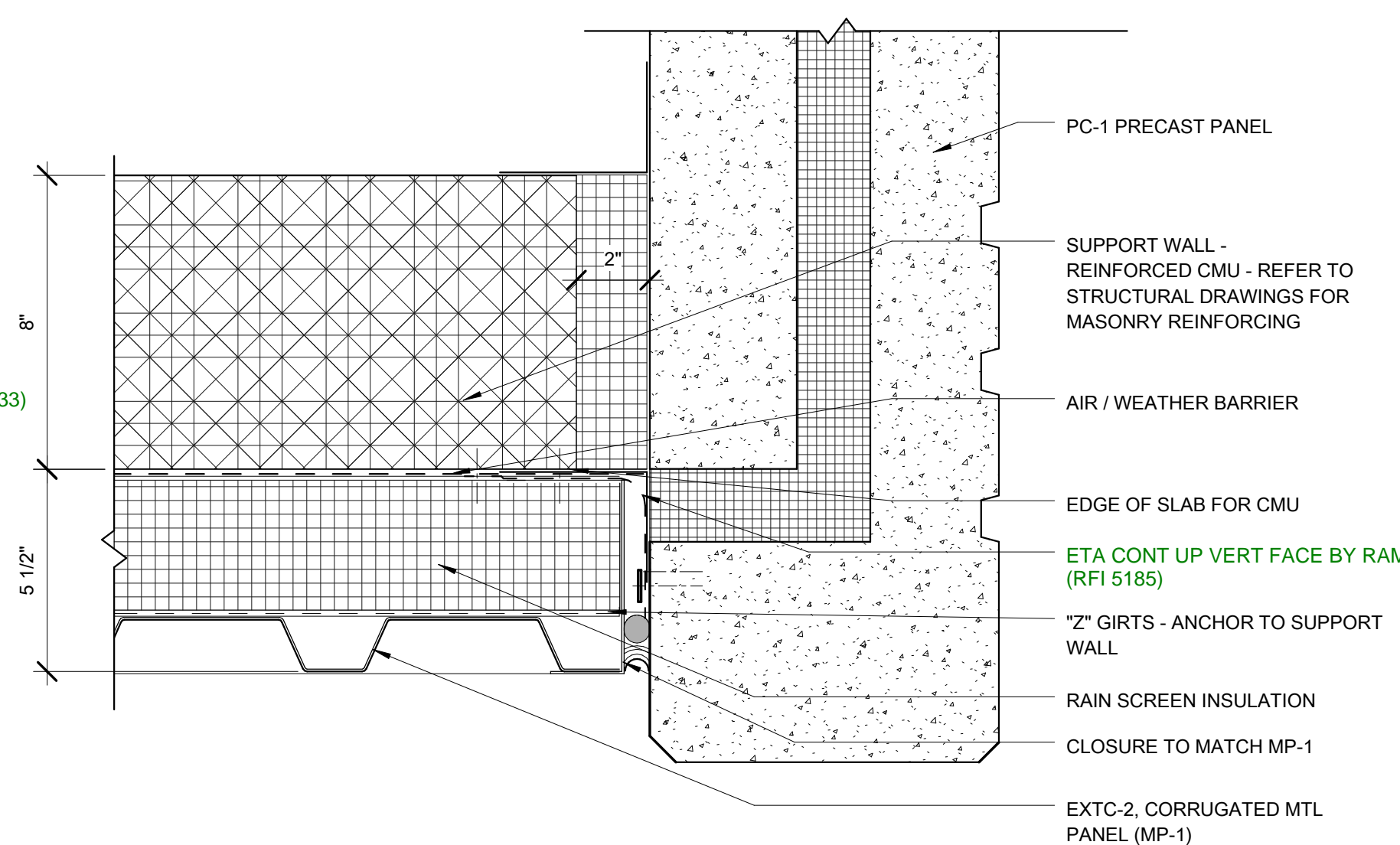
C3 INSIDE CORNER MTL PNL
SCALE: 1 1/2" = 1'-0"



E3 INSIDE CORNER MP-1A TO BR-1
SCALE: 1 1/2" = 1'-0"



C2 PRECAST WALL/METAL PANEL
SCALE: 1 1/2" = 1'-0"



E2 PLAN DETAIL @ MP-1/PC-1 - CORNER
SCALE: 3" = 1'-0"

RFI 5223	02/20/2015
REVISIONS:	DATE

CONSULTANTS:

DESMAN ASSOCIATES / PARKING
CODE CONSULTANTS, INC. / CODE CONSULTANT
THE SEXTANT GROUP / AV & ACOUSTICAL
HAMMER DESIGN ASSOCIATES / FOOD SERVICE
PYBURN & ODOM / ABATEMENT
TATA & HOWARD / TANK CONSULTANT
I.S.C. GROUP, INC. / IRRIGATION
DAN EUSER WATER ARCHITECTURE, INC. / WATER FEATURE

**ARCHITECT/ENGINEERS:**

studio **NOVA**

SCHRENK & PETERSON CONSULTING ENGINEERS / CIVIL
KORDA/NEMETH ENGINEERING / STRUCTURAL
BR+A CONSULTING ENGINEERS / MECH, ELECT, PLUMBING, LOW VOLTAGE
ARCHITECTURAL ENGINEERING / PLUMBING
SCALES ASSOCIATES / FIRE PROTECTION

DRAWING TITLE
EXTERIOR PLAN DETAILS

APPROVED: PROJECT DIRECTOR

PROJECT TITLE
SLVHCS REPLACEMENT MEDICAL
CENTER PROJECT

LOCATION
NEW ORLEANS, LOUISIANA

DATE
July 16, 2012

CHECKED
JR

DRAWN
BW/CN

PROJECT NUMBER
100342.00
BUILDING NUMBER
8
DOCUMENT SET PACKAGE
WP_09B

DRAWING NUMBER

8AS581

OFFICE OF
CONSTRUCTION
AND FACILITIES
MANAGEMENT

