

LEVEL - ALL AREA - P

GENERAL ARCH WOODWORK NOTES

- REF SHT 0A1201 FOR GRAPHIC LEGEND OF WALL DEVICES AND TYP MTG HT, UON.
- REF AF600 SERIES FIN SCHED FOR WALL AND CSWK FIN.
- REF AF600 SERIES FOR WALL PROTECTION TYPES, CNR GD AND DET.
- FOR TOIL ACCESSORIES, REF SHT 0A1201 FOR TYP MTG HT, UON; SHT 0A1202 FOR TOIL ACCESSORY LEGEND AND TOIL ACCESSORY GROUPS; AND A1600 SERIES FOR TOIL ACCESSORY SCHED.
- REF SHT 0A530-0A1534 FOR TYP CAB SECT AND DET.
- REF A1600 SERIES FOR DR SCHEDULE, RELITE LEGEND AND DET.
- REF A1400 SERIES FOR CLG HT.
- REF AV DWG FOR DISPLAY EQUIP TYPES, SCHED, ELEV AND DET.
- REF NURSE CALL DWG FOR LOCATION AND NURSE CALL EQUIP TYPES.
- PROVIDE MIN 1" FILLER PNL(G) AGAINST FIN WALL PTN AND WHERE CSWK TURNS CNR @ WALL AND BASE CAB, UON.
- ALL CNTR TOP 25" DEEP UON.
- ALL WALL CAB TO HAVE PLAM SOFFIT, UON.
- PROVIDE FIN PNL(G) ON ALL EXPOSED SIDES AND BACKS OF BASE AND WALL CAB.
- PROVIDE SIDE SPLASH ON ALL SIDE WALLS AND WHERE INDICATED.
- ALIGN ALL PWR/DATA OULETS LOCATED BELOW WALL CAB W/ CENTER OF CAB AS SHOWN ON INT ELEV.
- PROVIDE SSPNL ABOVE ALL SINKS. REF SHEET 0A1201 FOR MTG HT, SIZE AND DET REF, UON.
- LTNG FIXT TYPES NOTED ON INT ELEV. REF ELEC LTNG DWG AND LUMINAIRE SCHED.
- WALL DEVICES IN MENTAL HEALTH ROOMS TO BE TAMPER PROOF AND SECURED TO WALL.
- REF SHT 0A1400 FOR INTERIOR ELEVATION SHEET NOTES. CNTR SHALL FIELD VERIFY ALL ARCH WOODWORK DIMENSIONS ALIGNED W/ PTN FOF AND/OR NOTED AS "CLR" OR "MIN." DIMENSIONS NOTED AS "HOLD" ARE CRITICAL TO COORD OTHER WORK (E.G. CLG AND LTG). REF AF100 SERIES FOR ANY FIN THK TO BE ACCOUNTED FOR TO ENSURE ANY DIM NOTED AS "CLR" OR "MIN" IS MET.

ARCH WOODWORK LEGEND

- WOOD GRAIN DIRECTION
- CIRCULAR DESK GROMMET
- LINEAR DESK GROMMET (MAIN RECEPTION & SECURITY DESKS)

CONSTRUCTION DOCUMENTS 1 FULLY SPRINKLERED

OFFICE OF CONSTRUCTION AND FACILITIES MANAGEMENT



ONE INCH = FORTY FEET (1" = 40')

THREE INCHES = ONE FOOT

ONE AND ONE HALF INCHES = ONE FOOT

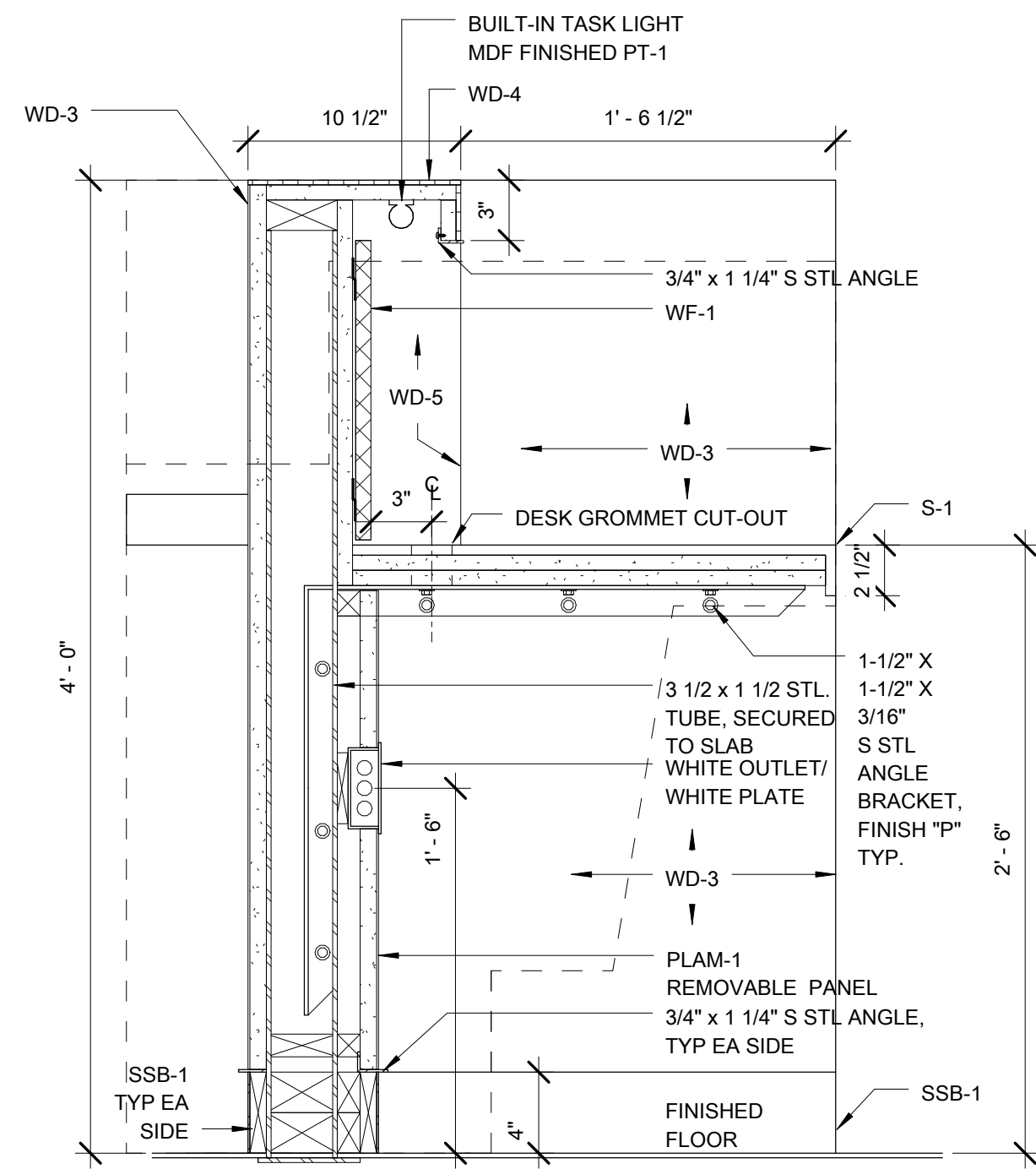
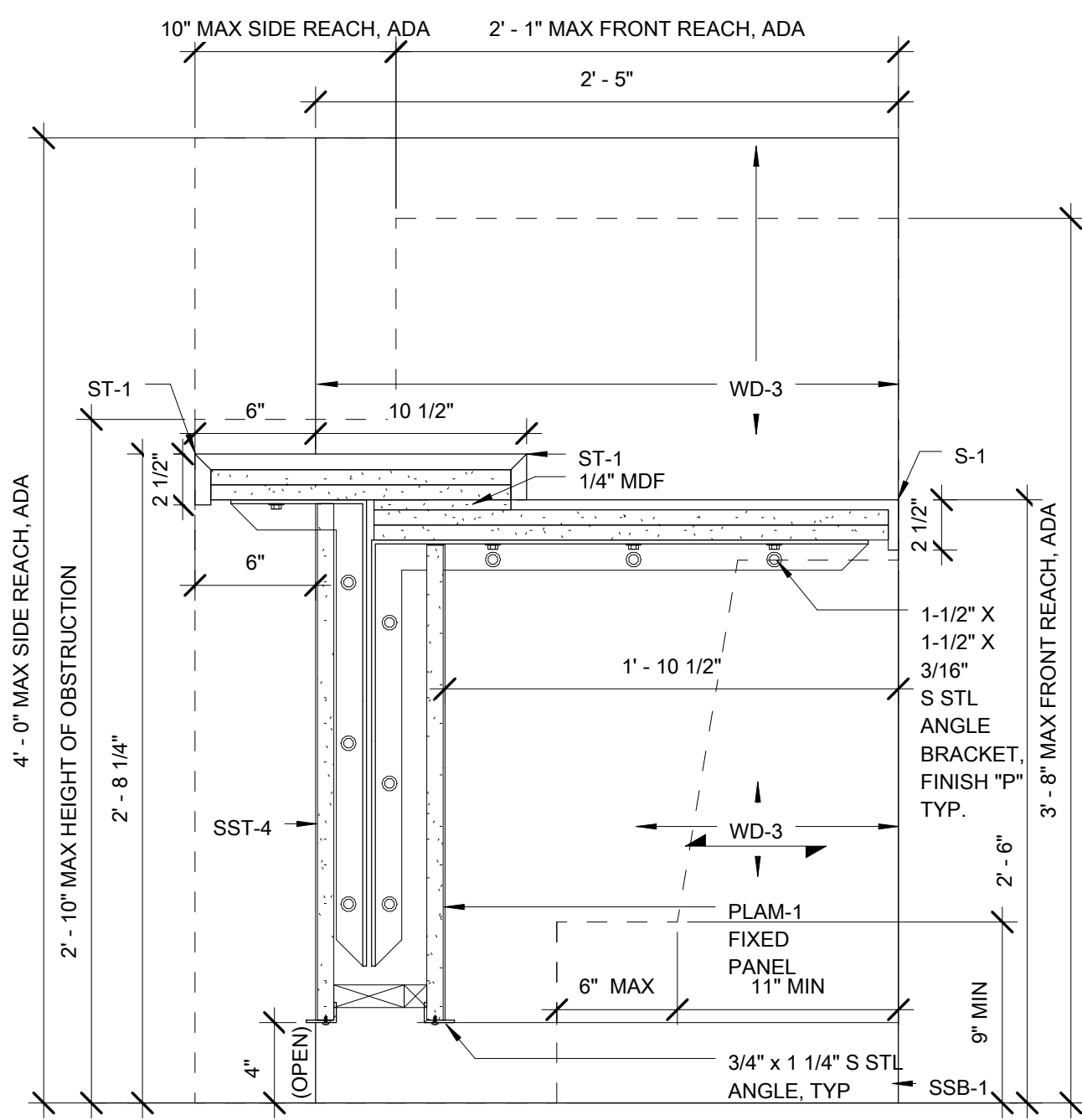
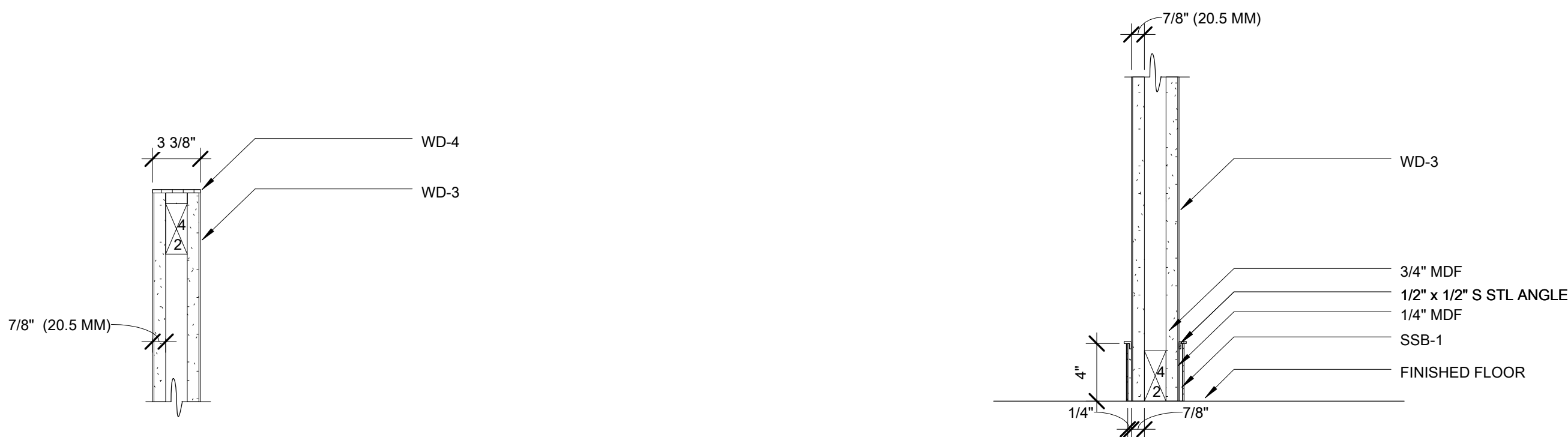
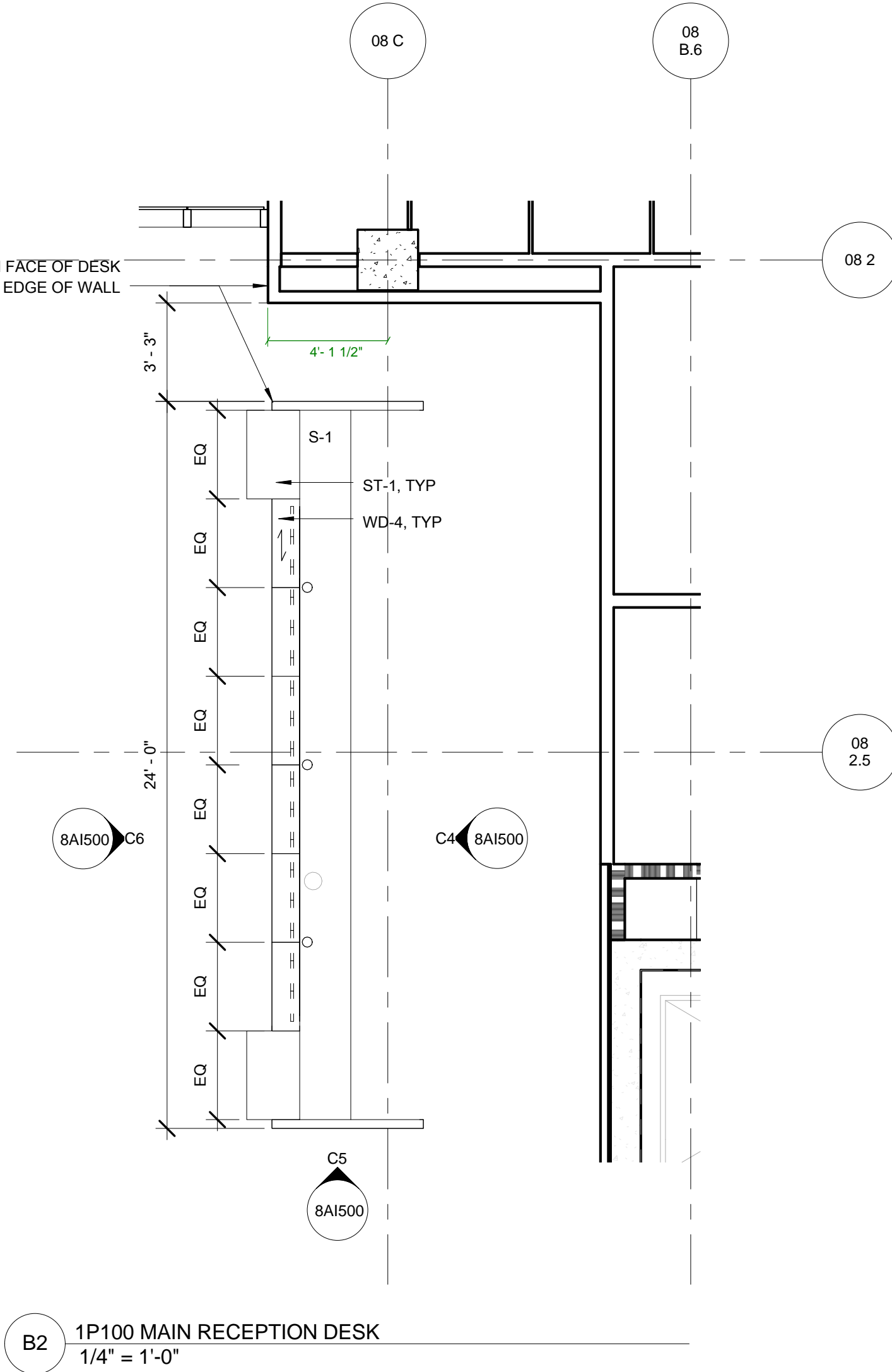
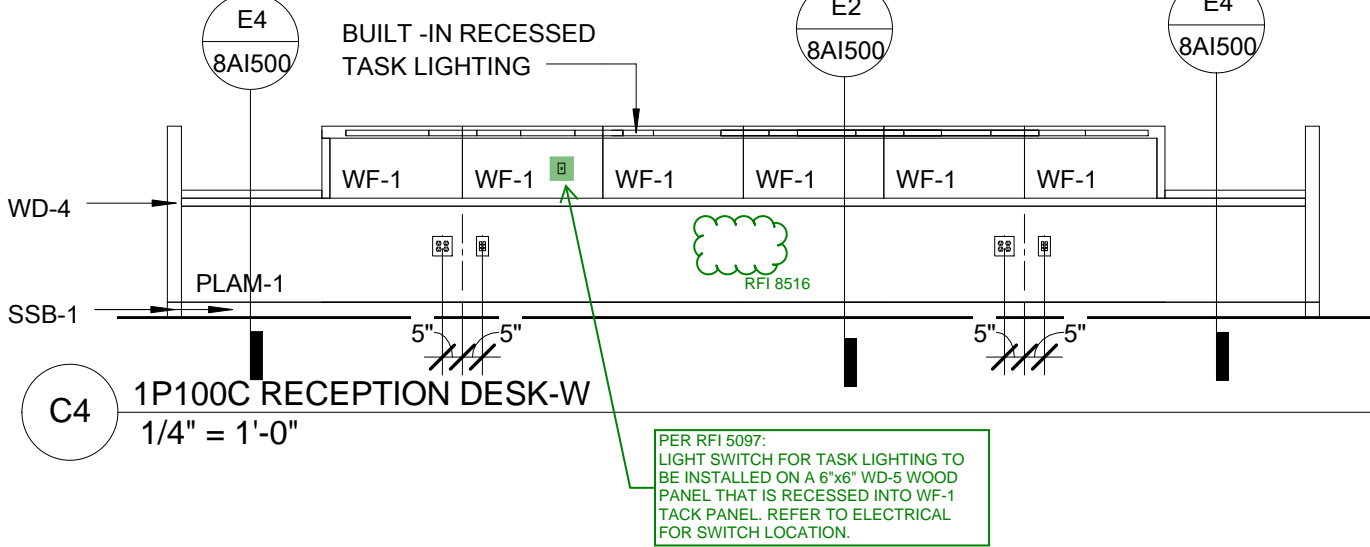
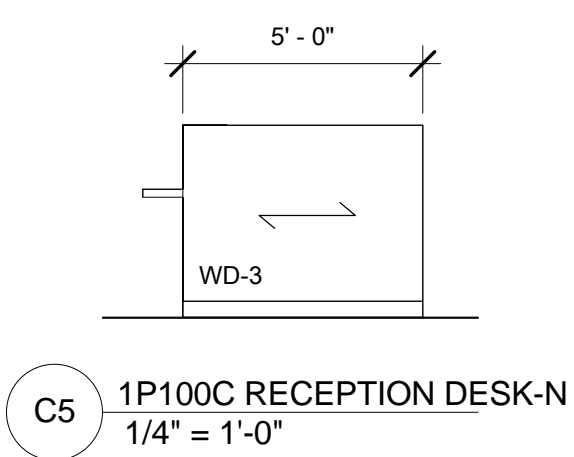
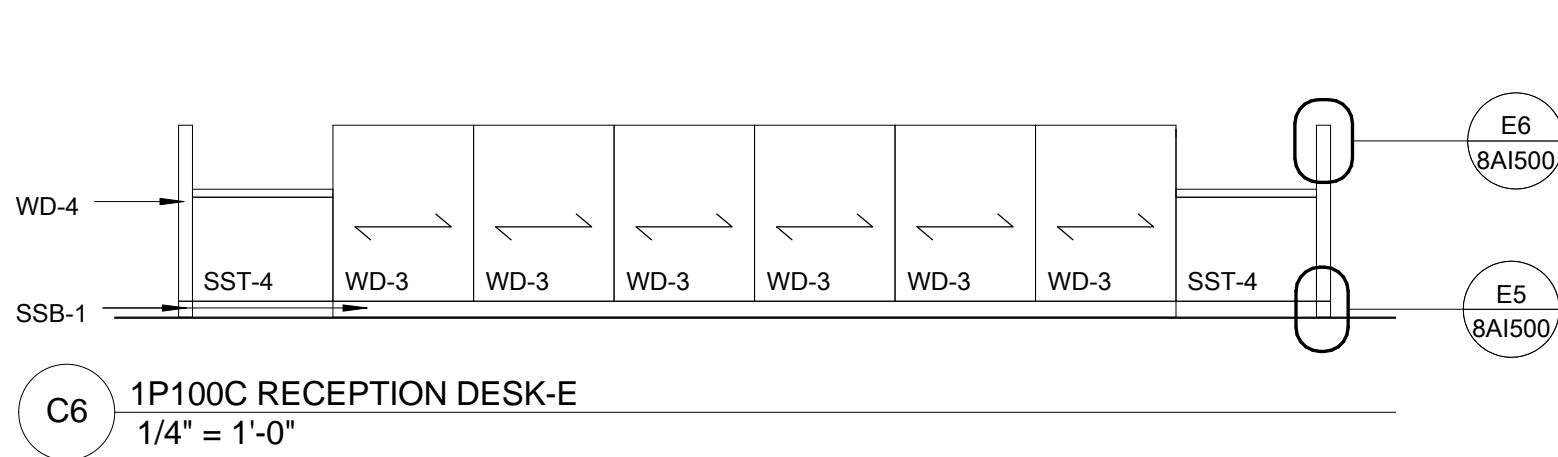
THREE QUARTERS INCH = ONE FOOT

ONE HALF INCH = ONE FOOT

ONE QUARTER INCH = ONE FOOT

ONE EIGHT INCH = ONE FOOT

ONE SIXTEENTH INCH = ONE FOOT



E6 WD END PANEL - HD/JMB 1 1/2" = 1'-0"

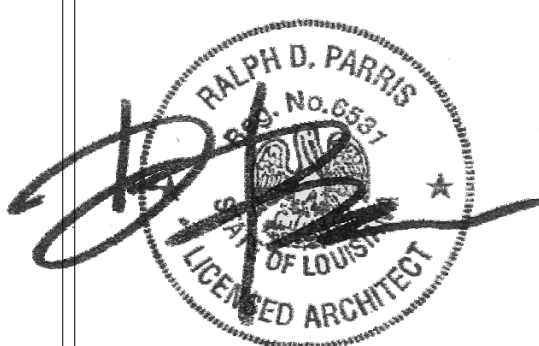
E5 WD END PANEL - BASE 1 1/2" = 1'-0"

E4 DEPARTMENTAL DESK LEDGE1 1 1/2" = 1'-0"

E2 E2010-DEPARTMENTAL DESK 1 1/2" = 1'-0"

CONSULTANTS:

DESMAN ASSOCIATES / PARKING
CODE CONSULTANTS, INC. / CODE CONSULTANT
THE SEXTANT GROUP / AV & ACOUSTICAL
HAMMER DESIGN ASSOCIATES / FOOD SERVICE
PYBURN & ODOM / ABATEMENT
TATA & HOWARD / TANK CONSULTANT
I.S.C. GROUP, INC. / IRRIGATION
DAN EUSER WATER ARCHITECTURE, INC. / WATER FEATURE



ARCHITECT/ENGINEERS:

studio **NOVA**
SCHRENK & PETERSON CONSULTING ENGINEERS / CIVIL
KORDA/NEMETH ENGINEERING / STRUCTURAL
BR+A CONSULTING ENGINEERS / MECH, ELECT, PLUMBING, LOW VOLTAGE
ARCHITECTURAL ENGINEERING / PLUMBING
SCALES ASSOCIATES / FIRE PROTECTION

DRAWING TITLE
BLDG 8- ARCHITECTURAL WOODWORK

APPROVED: PROJECT DIRECTOR

John J. Sanders

PROJECT TITLE
SLV/HCS REPLACEMENT MEDICAL CENTER PROJECT

LOCATION
NEW ORLEANS, LOUISIANA

DATE
July 16, 2012

CHECKED
SG

DRAWN
JD/SG

PROJECT NUMBER
100342.00
BUILDING NUMBER
08
DOCUMENT SET PACKAGE
WP_09B

DRAWING NUMBER

8A1500