

ONE INCH = FORTY FEET (1" = 40')

THREE INCHES = ONE FOOT

ONE AND ONE HALF INCHES = ONE FOOT

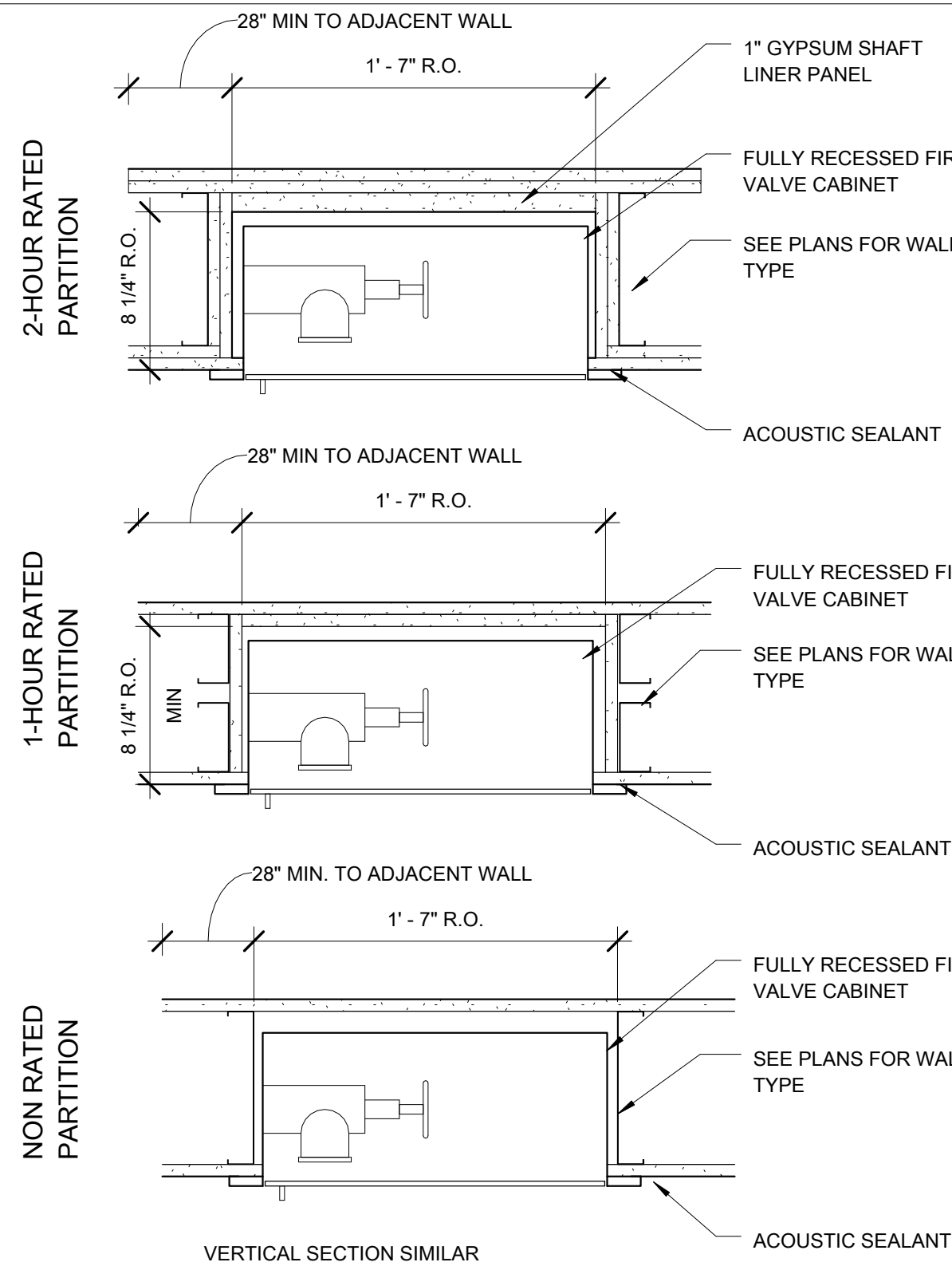
THREE QUARTERS INCH = ONE FOOT

ONE HALF INCH = ONE FOOT

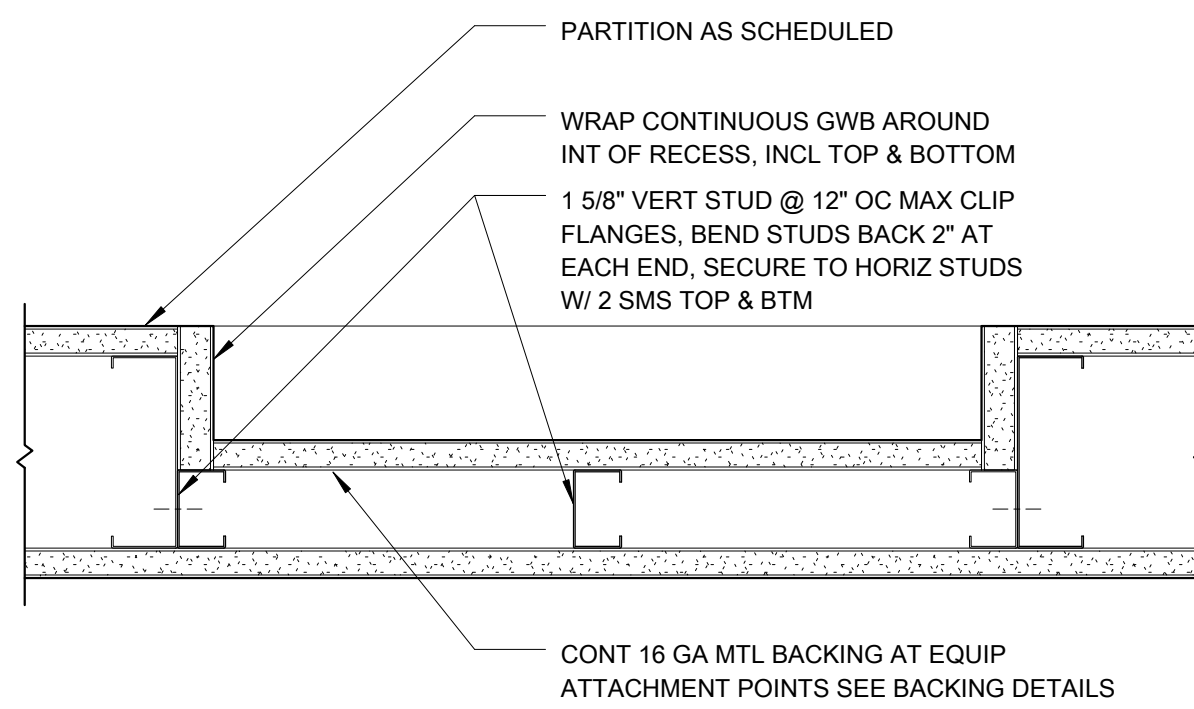
ONE QUARTER INCH = ONE FOOT

ONE EIGHT INCH = ONE FOOT

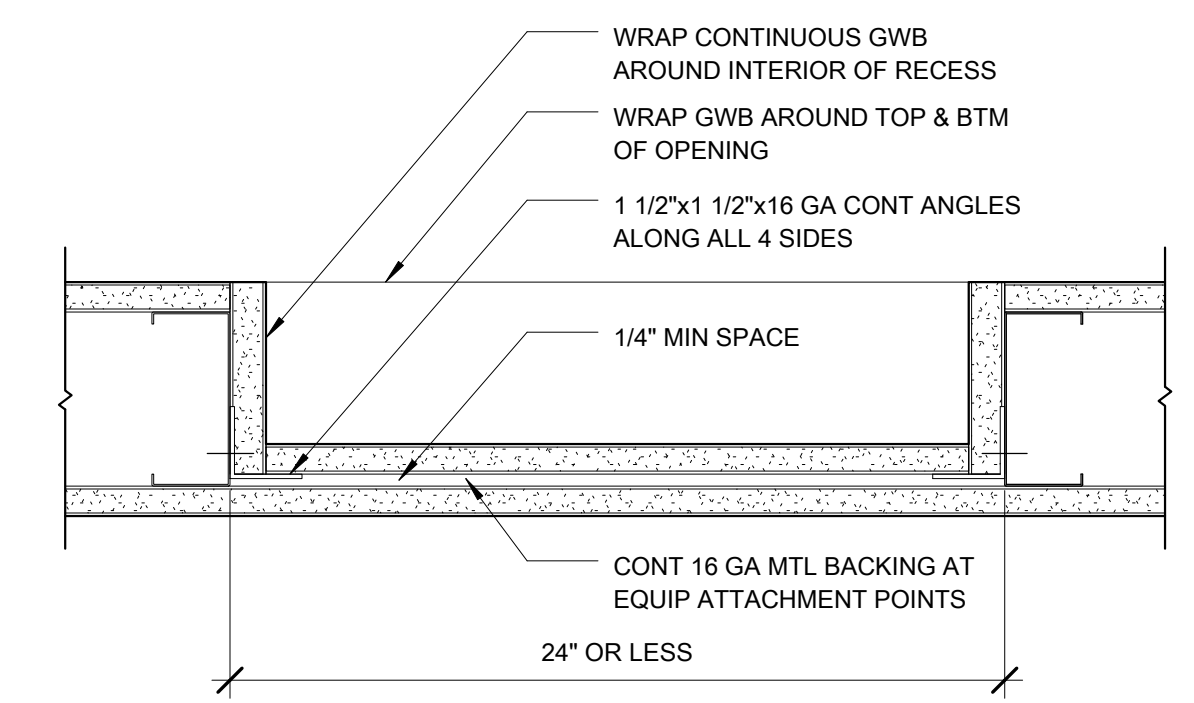
ONE SIXTEENTH INCH = ONE FOOT



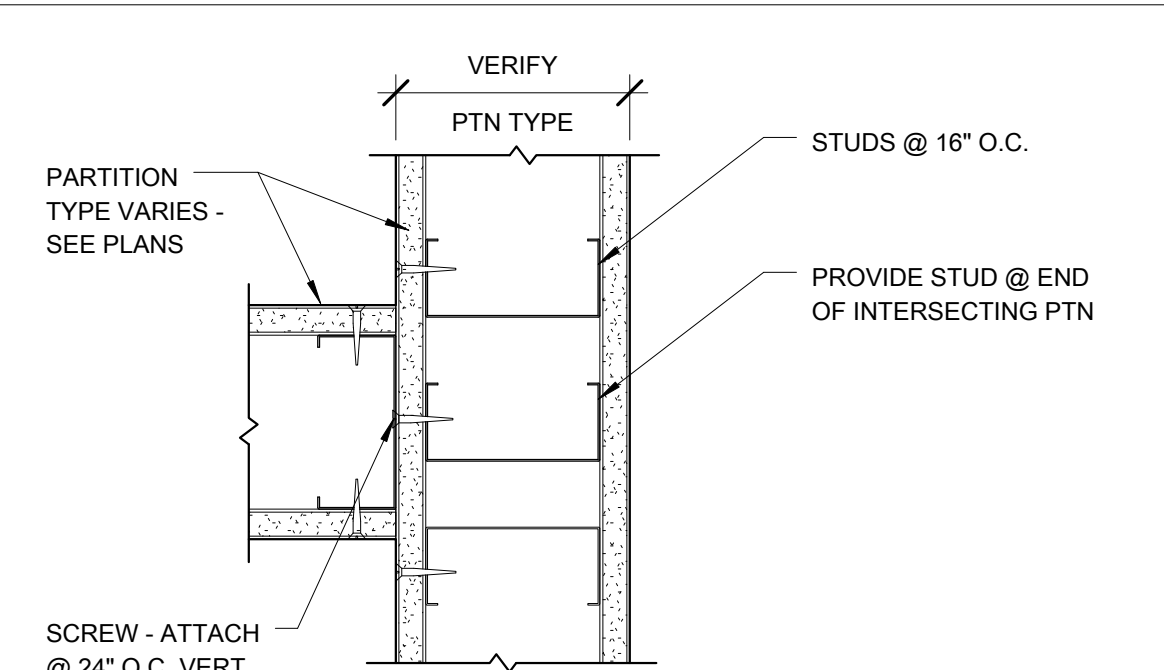
B5 TYP. FIRE DEPT VALVE CABINET FRAMING
SCALE: 1 1/2" = 1'-0"



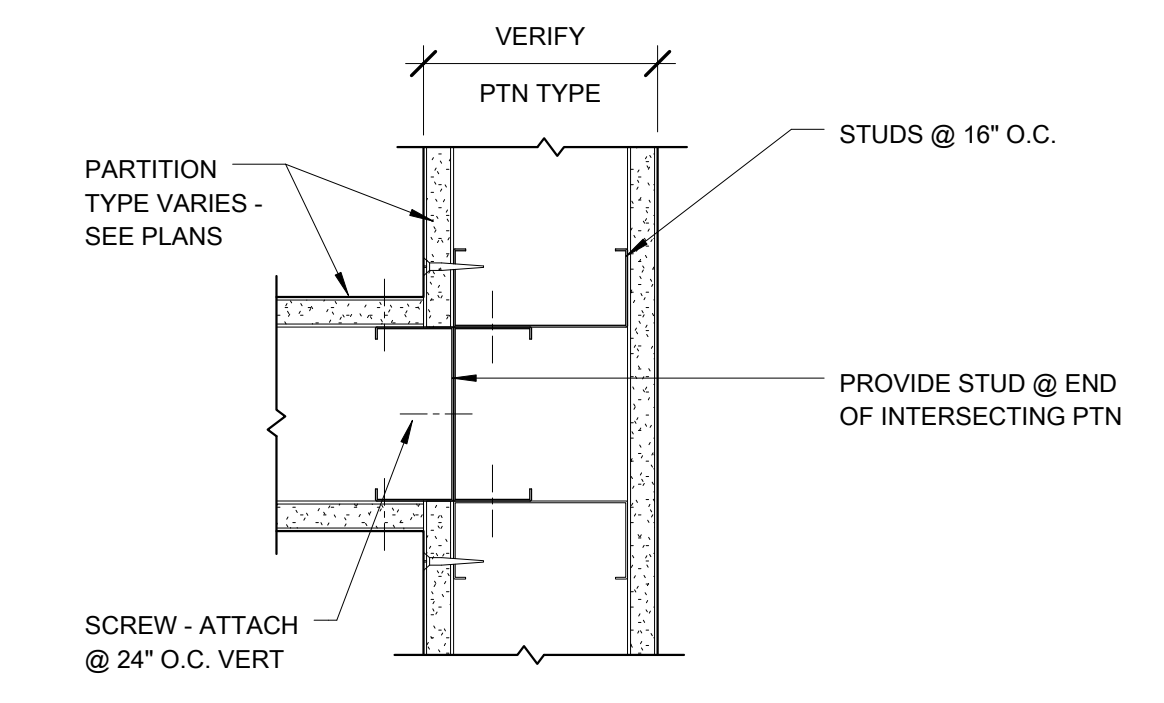
C5 TYPICAL WIDE EQUIP RECESS
SCALE: 3" = 1'-0"



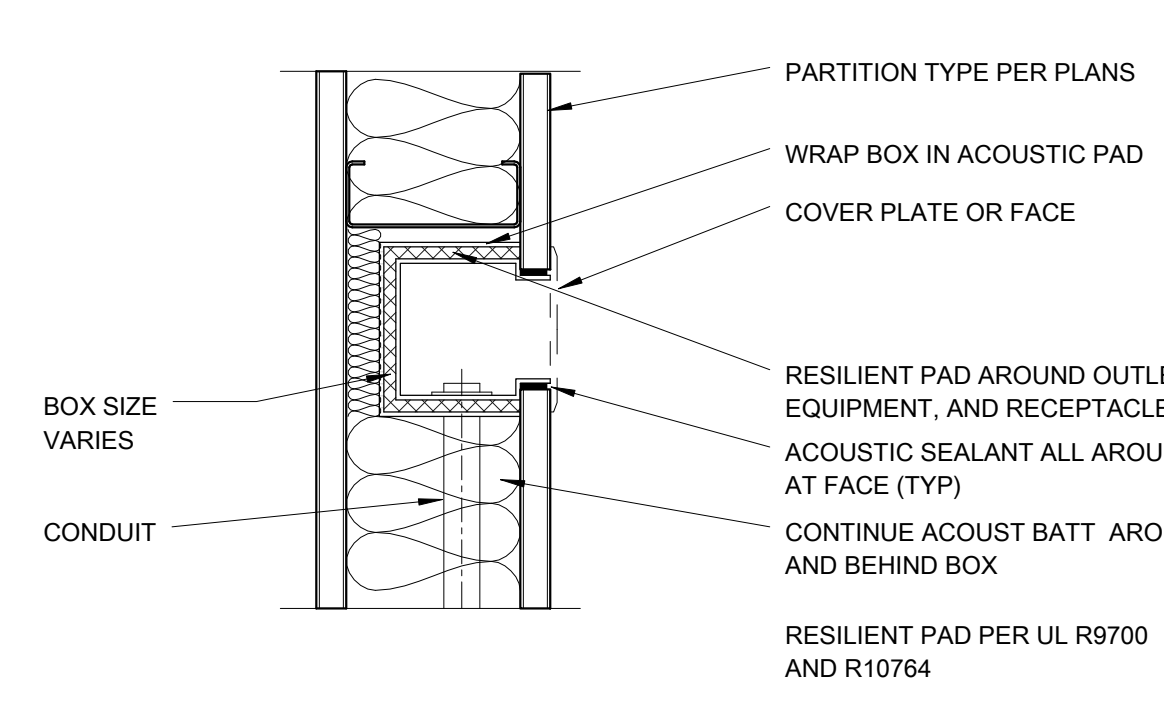
D5 TYPICAL NARROW EQUIP RECESS
SCALE: 3" = 1'-0"



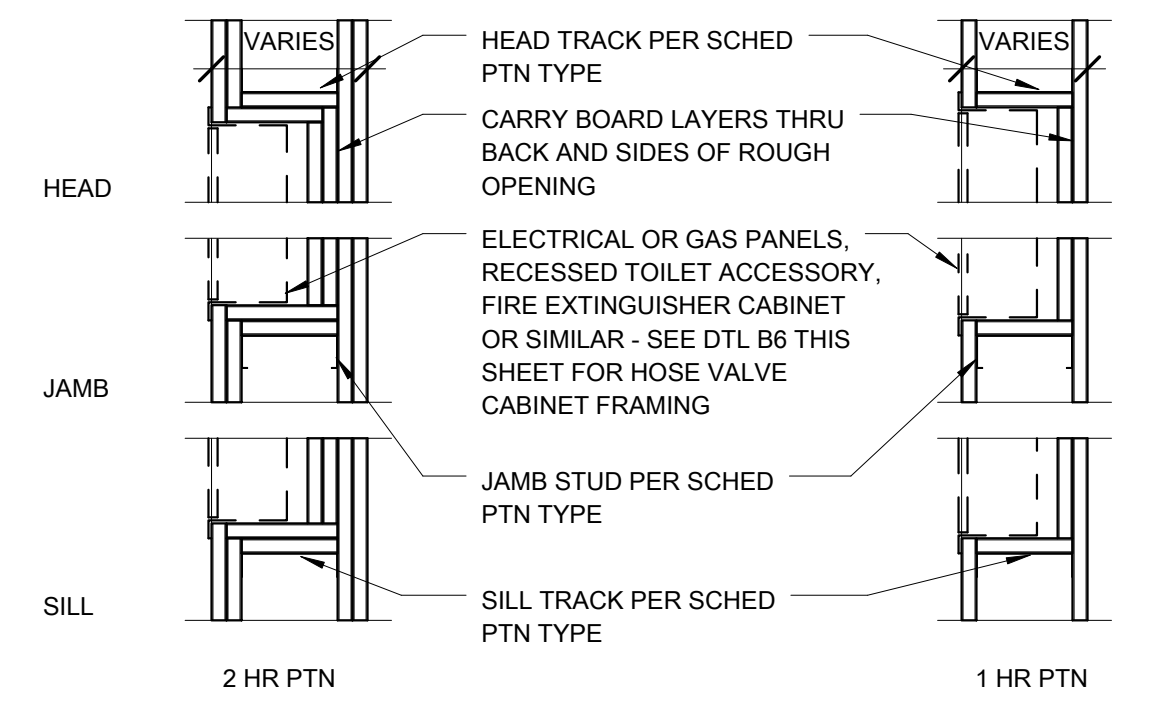
A4 INTERIOR PTN INTERSECTION - RATED
SCALE: 3" = 1'-0"



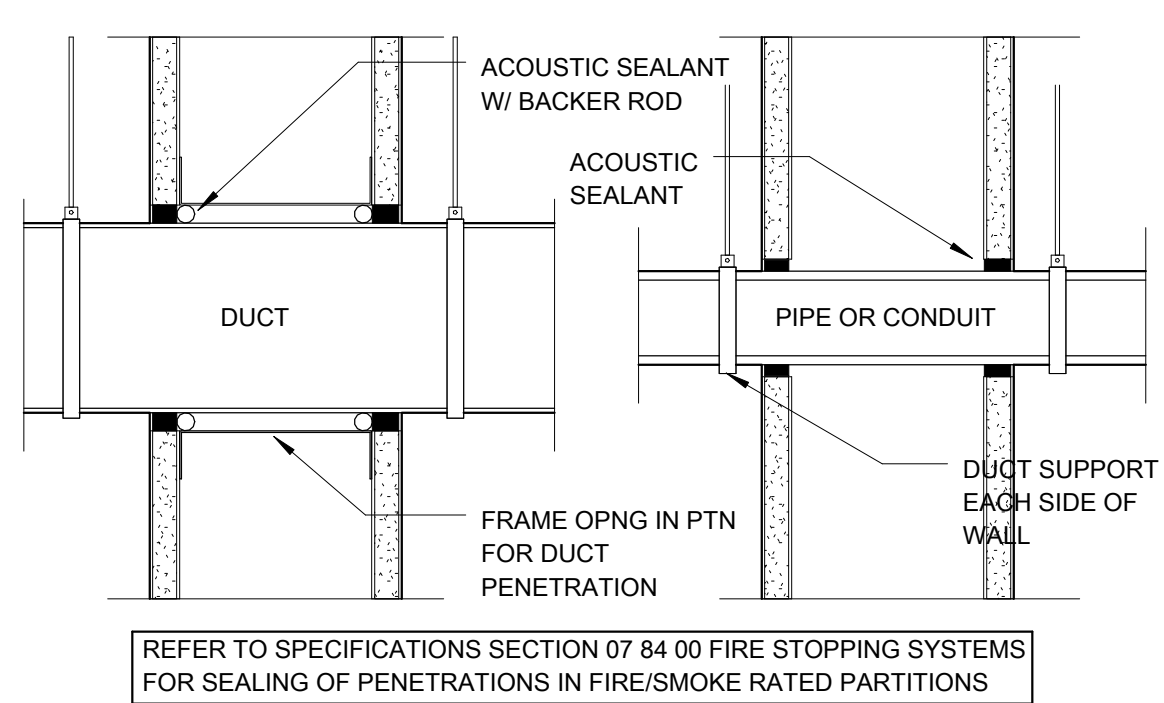
B4 INTERIOR PTN INTERSECTION - NOT RATED
SCALE: 3" = 1'-0"



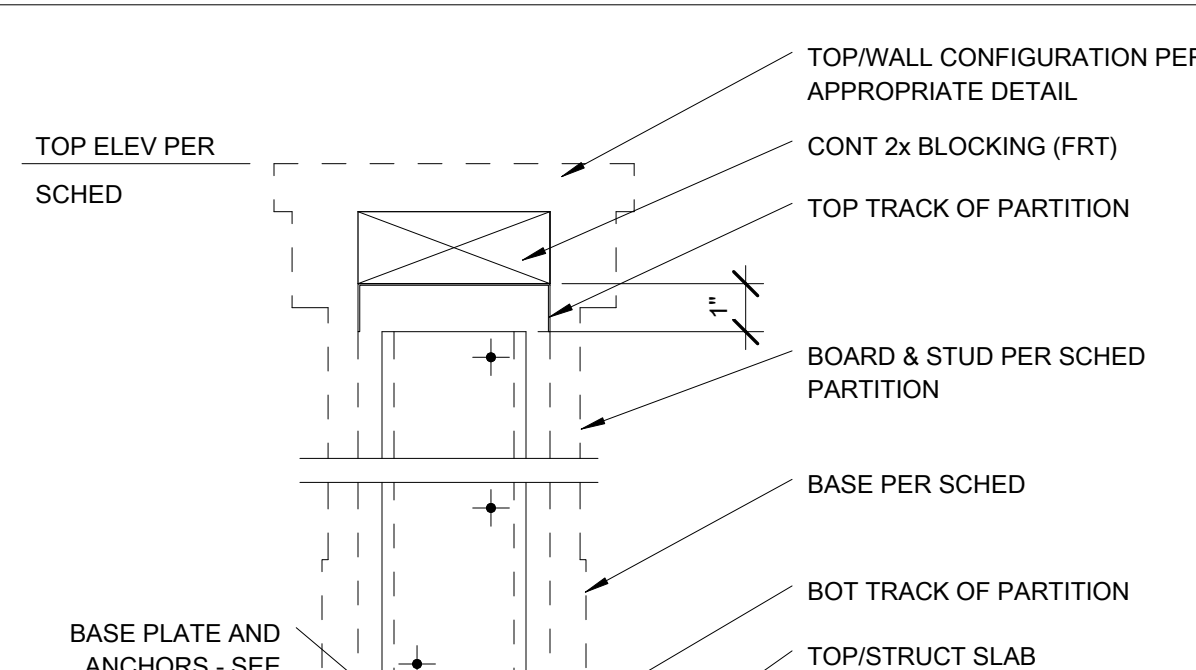
C4 J-BOXES IN ACOUSTIC PTNS
SCALE: 3" = 1'-0"



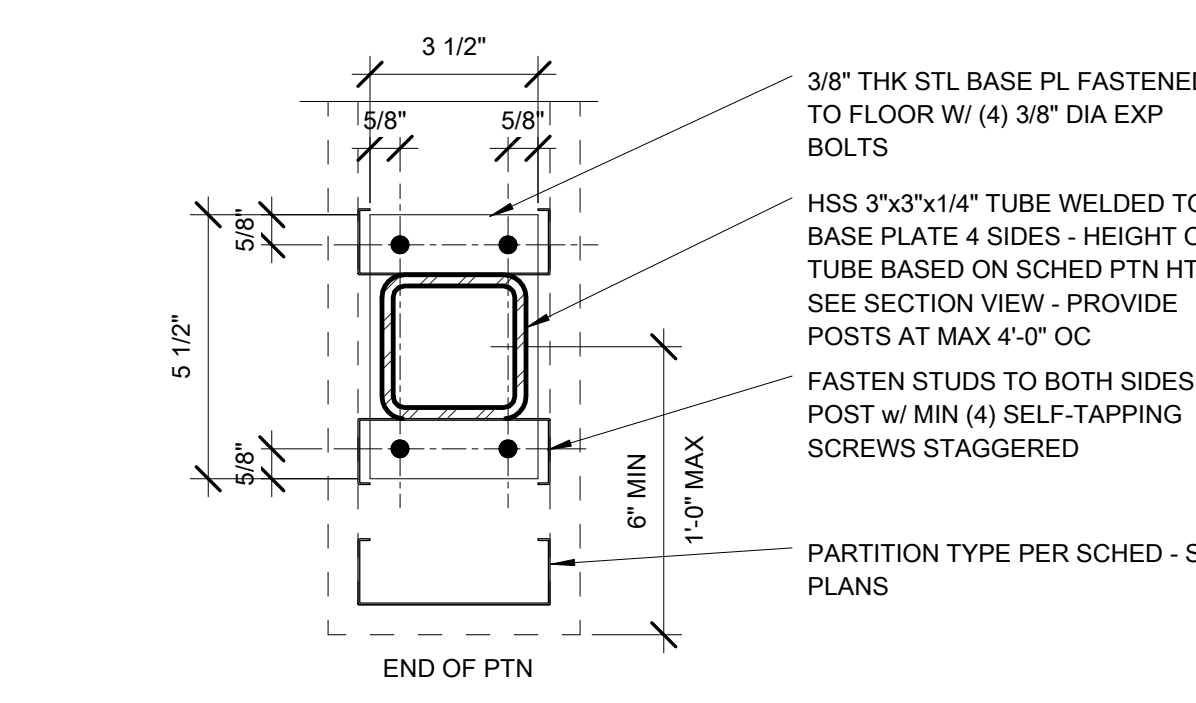
D4 RATED ENCLOSURES @ CABINETS & PANELS
SCALE: 1 1/2" = 1'-0"



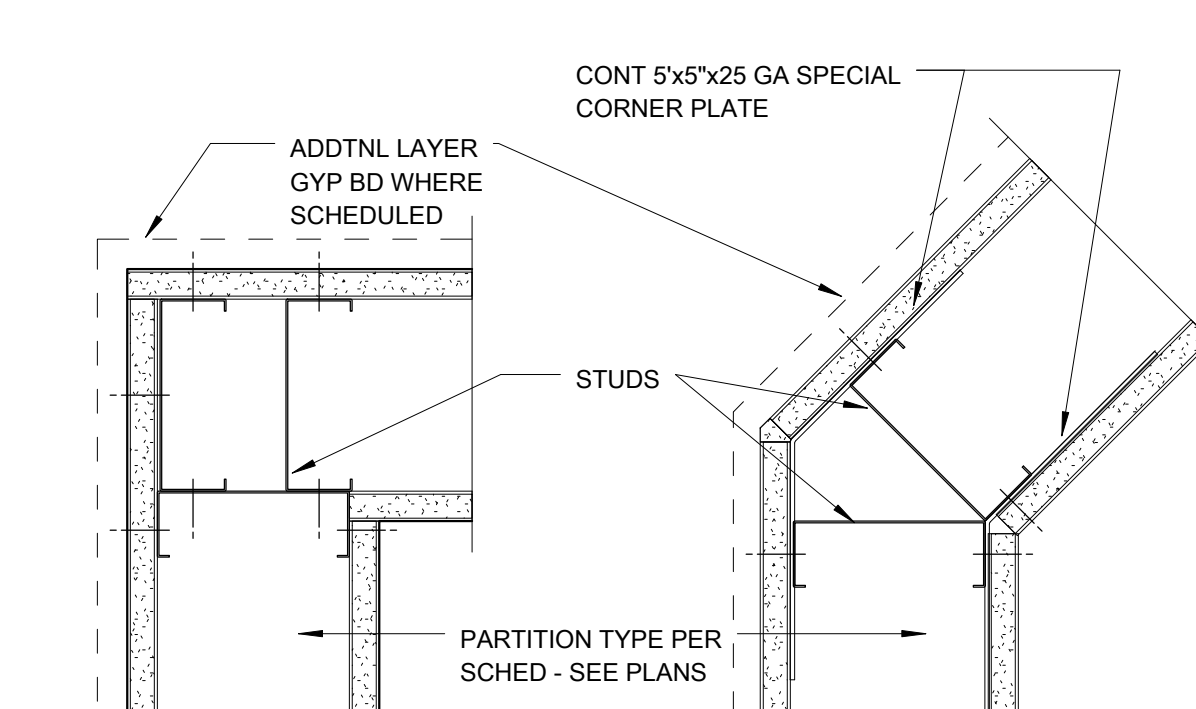
E4 NON-RATED PTN PENETRATIONS
SCALE: 3" = 1'-0"



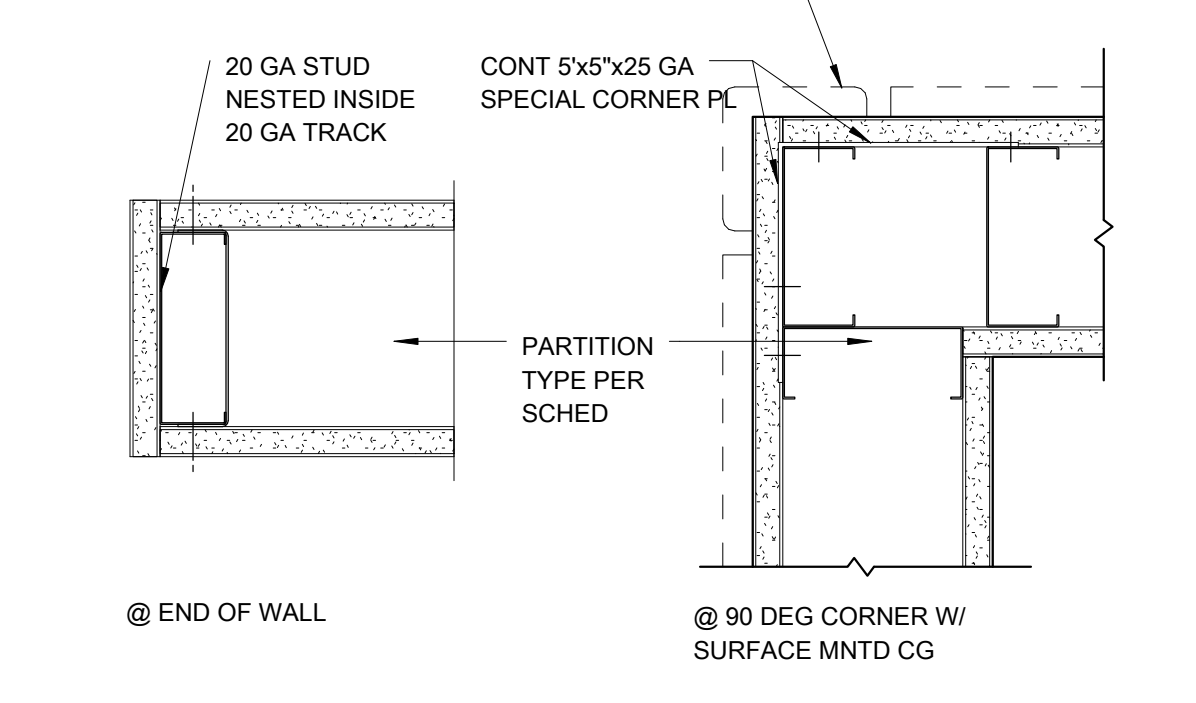
B3 STRUCTURE FOR PARTIAL HGT PARTITIONS
SCALE: 3" = 1'-0"



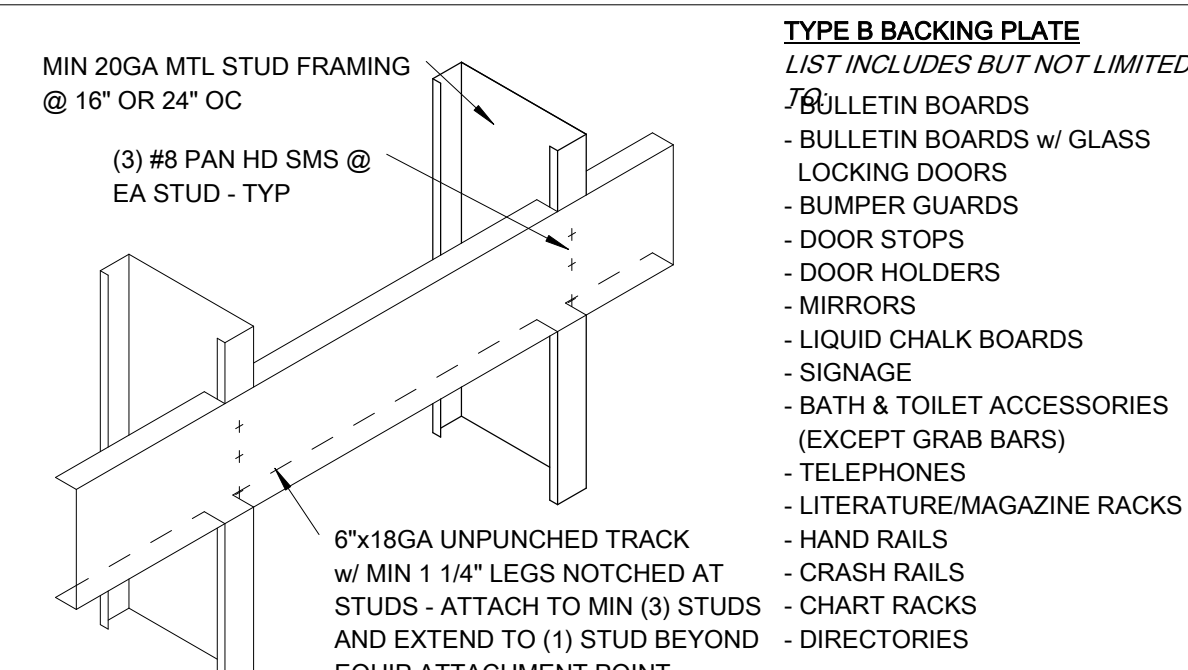
B2 WALL BACKING - TYPE C
SCALE: 1 1/2" = 1'-0"



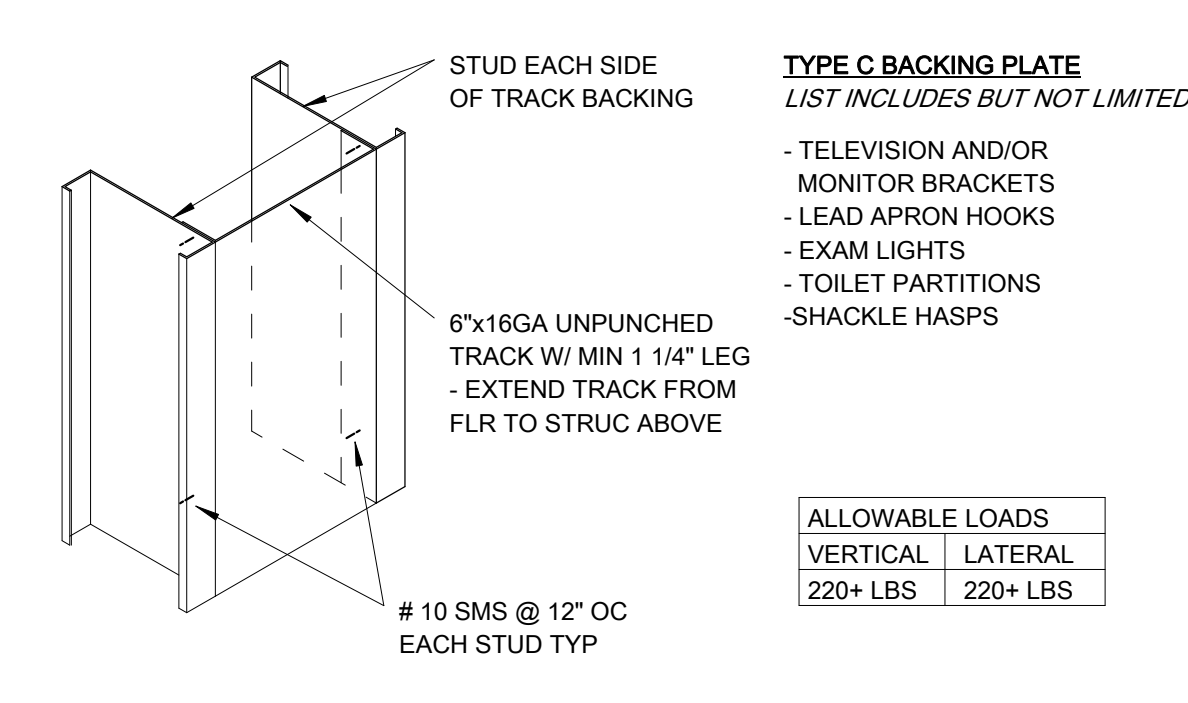
C2 INTERIOR WOOD BLOCKING ATTACHMENT
SCALE: 3" = 1'-0"



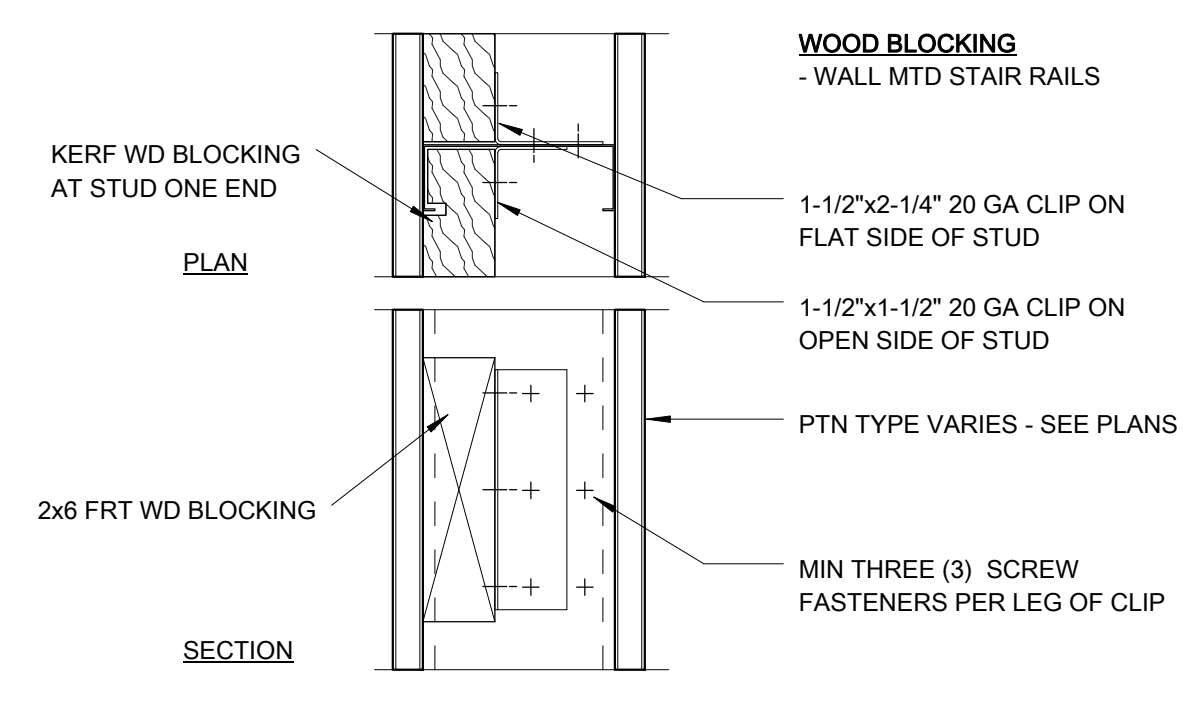
D3 C1011-PTN_STUD_CORNER-01
SCALE: 3" = 1'-0"



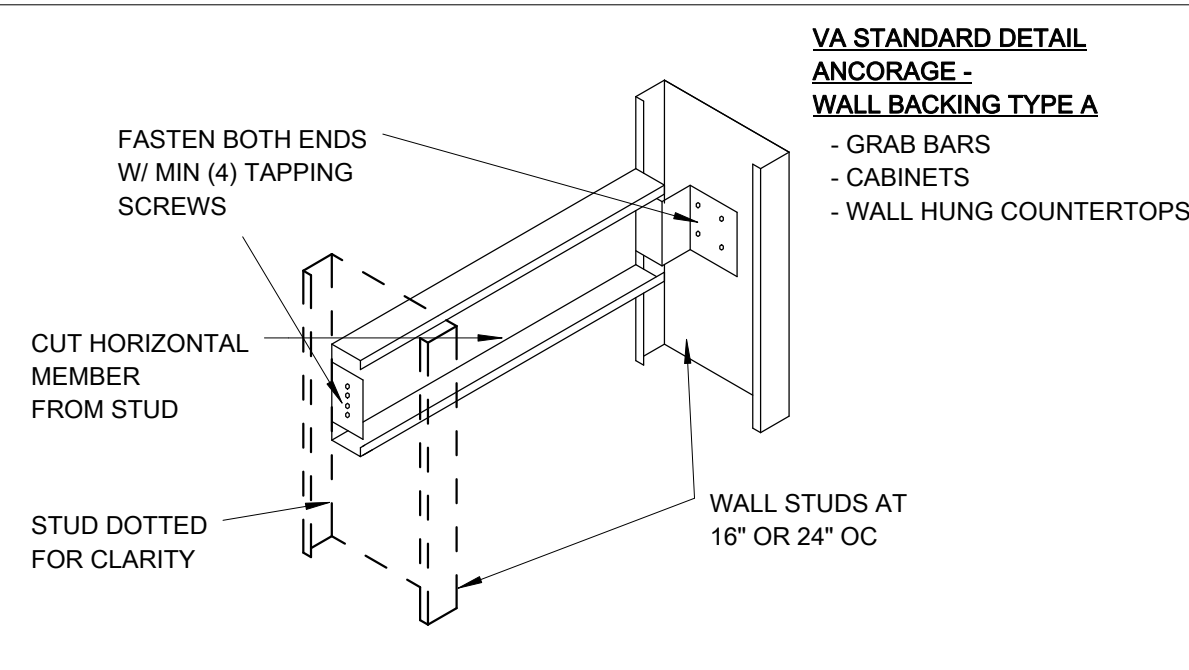
A2 WALL BACKING - TYPE B
SCALE: 1 1/2" = 1'-0"



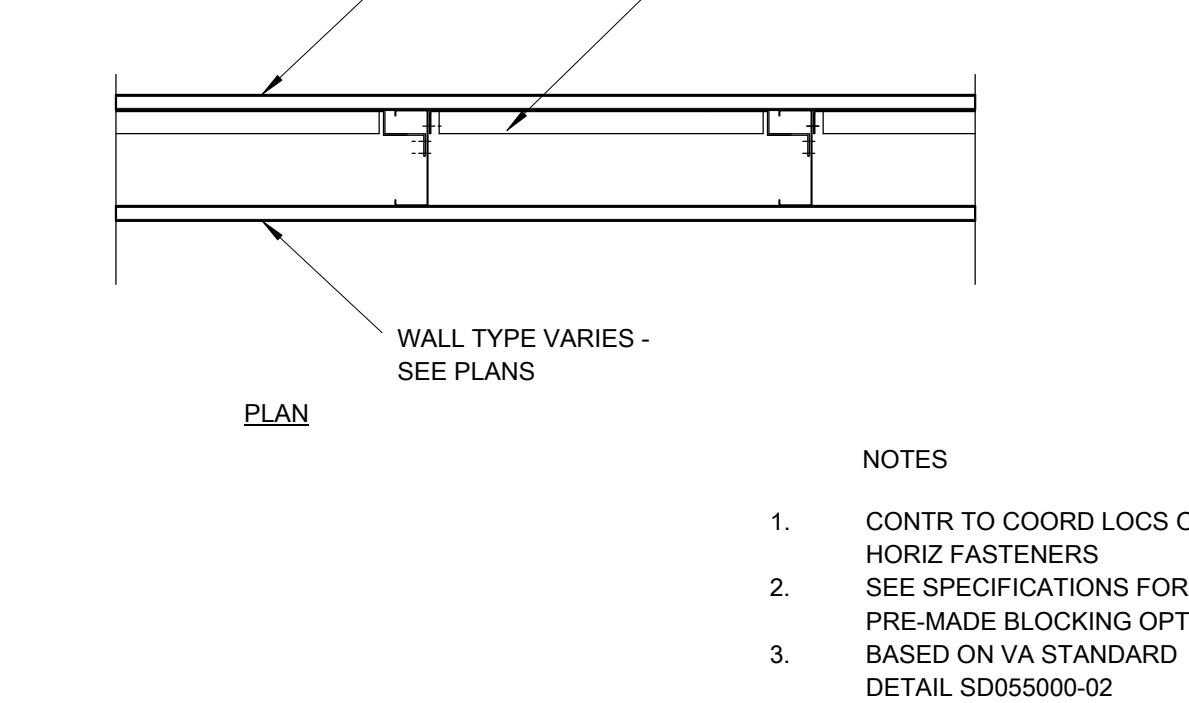
B1 WALL BACKING - TYPE A
SCALE: 1 1/2" = 1'-0"



C1 PLYWD BLOCKING DETAIL (HEAD & SILL)
SCALE: 3" = 1'-0"



B1 WALL BACKING - TYPE A
SCALE: 1 1/2" = 1'-0"



C1 PLYWD BLOCKING DETAIL (HEAD & SILL)
SCALE: 3" = 1'-0"

CONSULTANTS:

DESMAN ASSOCIATES / PARKING
CODE CONSULTANTS, INC. / CODE CONSULTANT
THE SEXTANT GROUP / AV & ACOUSTICAL
HAMMER DESIGN ASSOCIATES / FOOD SERVICE
PYBURN & ODOM / ABATEMENT
TATA & HOWARD / TANK CONSULTANT
I.S.C. GROUP, INC. / IRRIGATION
DAN EUSER WATER ARCHITECTURE, INC. / WATER FEATURE

ARCHITECT/ENGINEERS:

studio **NOVA**
SCHRENK & PETERSON CONSULTING ENGINEERS / CIVIL
KORDA/NEMETH ENGINEERING / STRUCTURAL
BR+A CONSULTING ENGINEERS / MECH, ELECT, PLUMBING, LOW VOLTAGE
ARCHITECTURAL ENGINEERING / PLUMBING
SCALES ASSOCIATES / FIRE PROTECTION

DRAWING TITLE
PARTITION DETAILS

APPROVED: PROJECT DIRECTOR

PROJECT TITLE
SLV/HCS REPLACEMENT MEDICAL
CENTER PROJECTLOCATION
NEW ORLEANS, LOUISIANADATE
July 16, 2012CHECKED
DMK/JKDRAWN
MLPROJECT NUMBER
100342.00
BUILDING NUMBER
08
DOCUMENT SET PACKAGE
WP_09B

DRAWING NUMBER

8A1502

OFFICE OF
CONSTRUCTION
AND FACILITIES
MANAGEMENT Department of
Veterans Affairs