

ONE INCH = FORTY FEET (1" = 40')

0' 15' 30'

THREE INCHES = ONE FOOT

0' 6"

ONE AND ONE HALF INCHES = ONE FOOT

0' 6"

THREE QUARTERS INCH = ONE FOOT

0' 6"

ONE HALF INCH = ONE FOOT

0' 6"

ONE QUARTER INCH = ONE FOOT

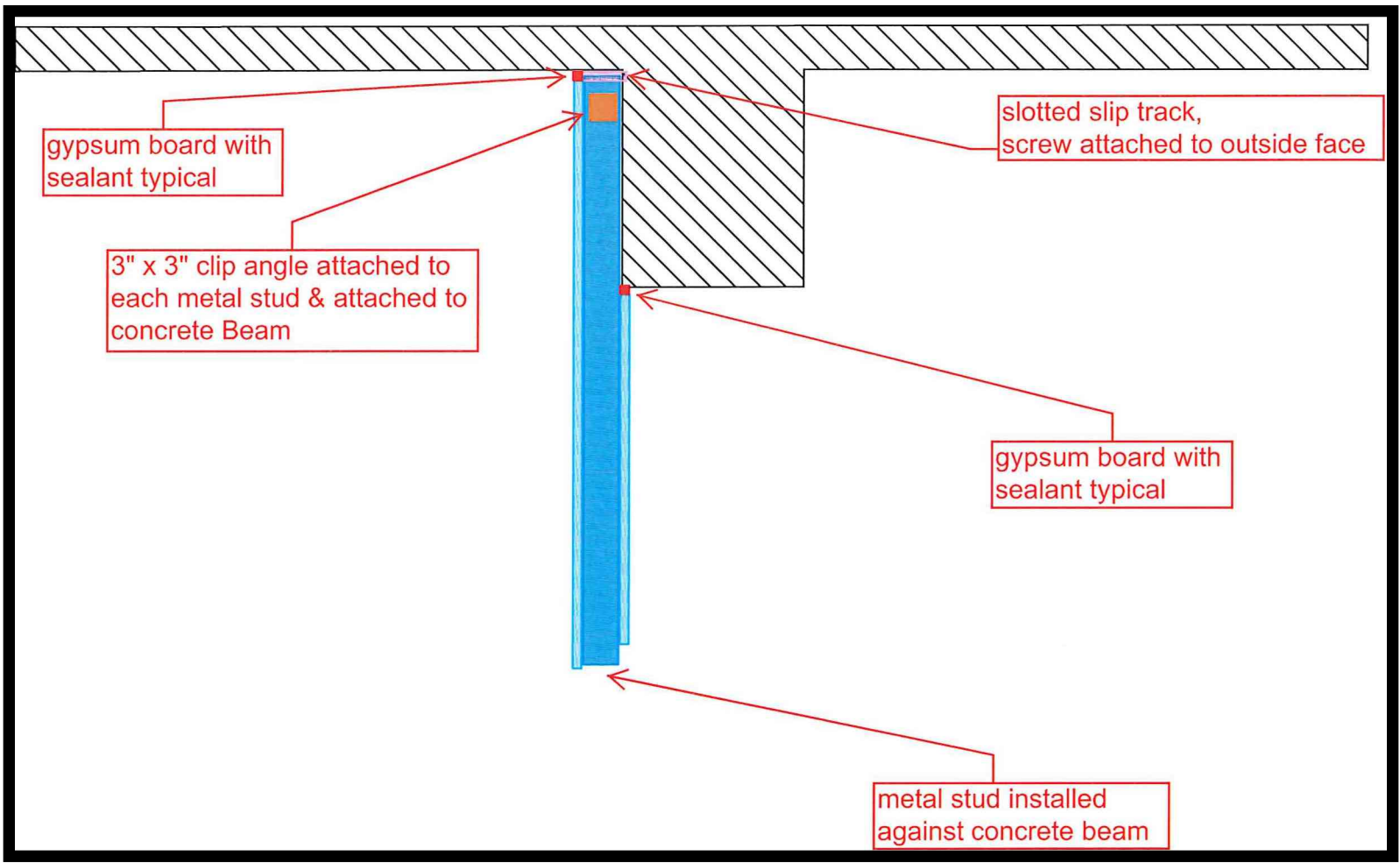
0' 6"

ONE EIGHT INCH = ONE FOOT

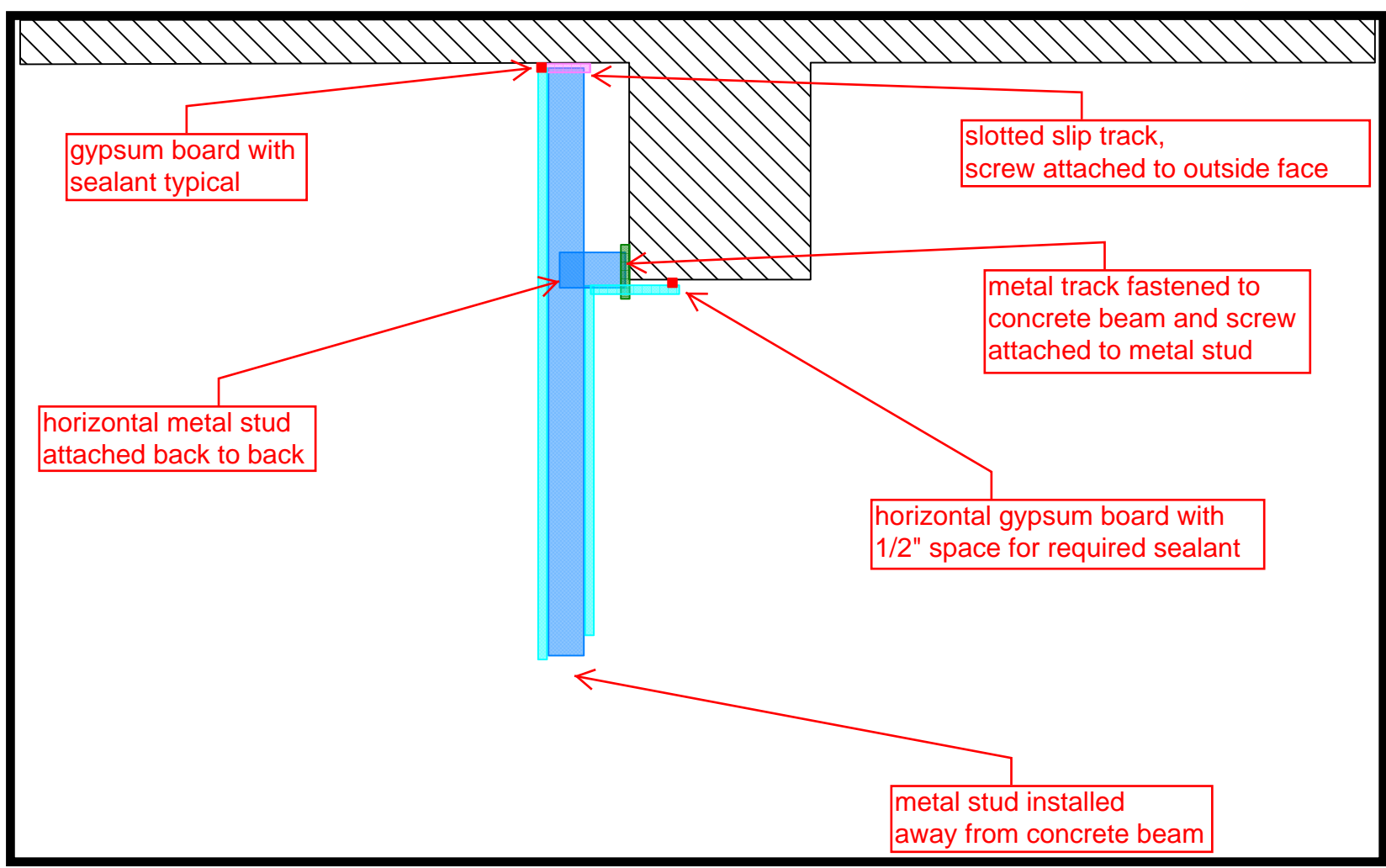
0' 6"

ONE SIXTEENTH INCH = ONE FOOT

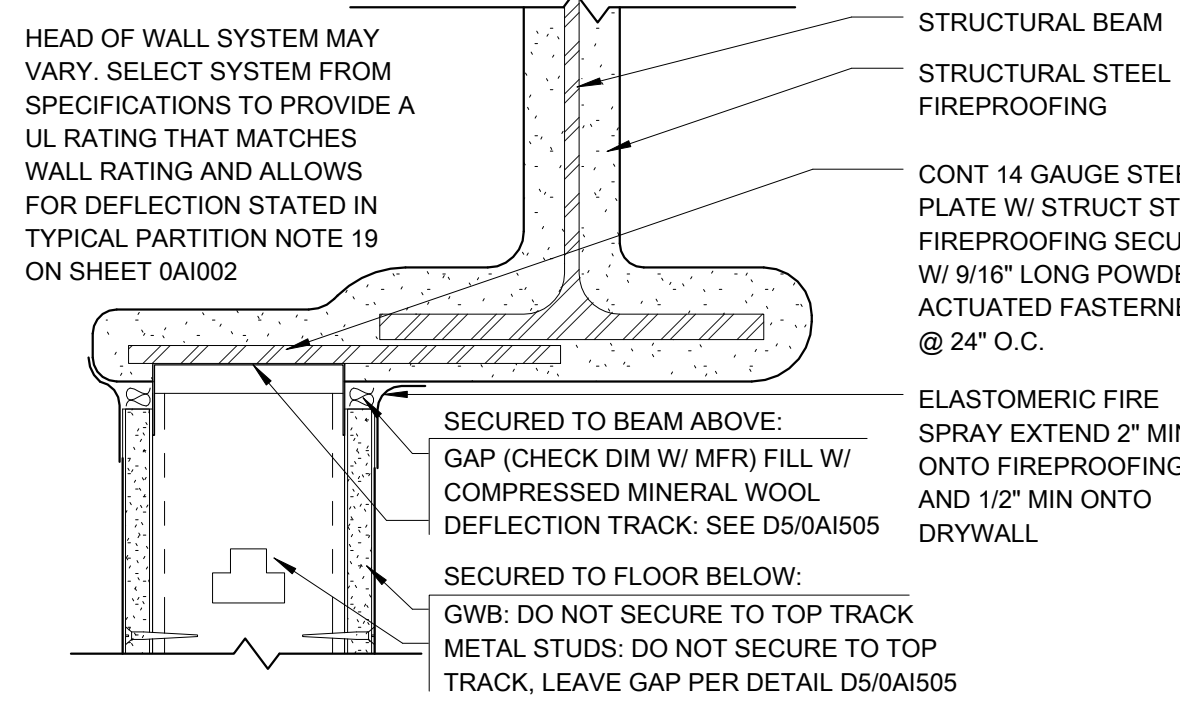
0' 6"



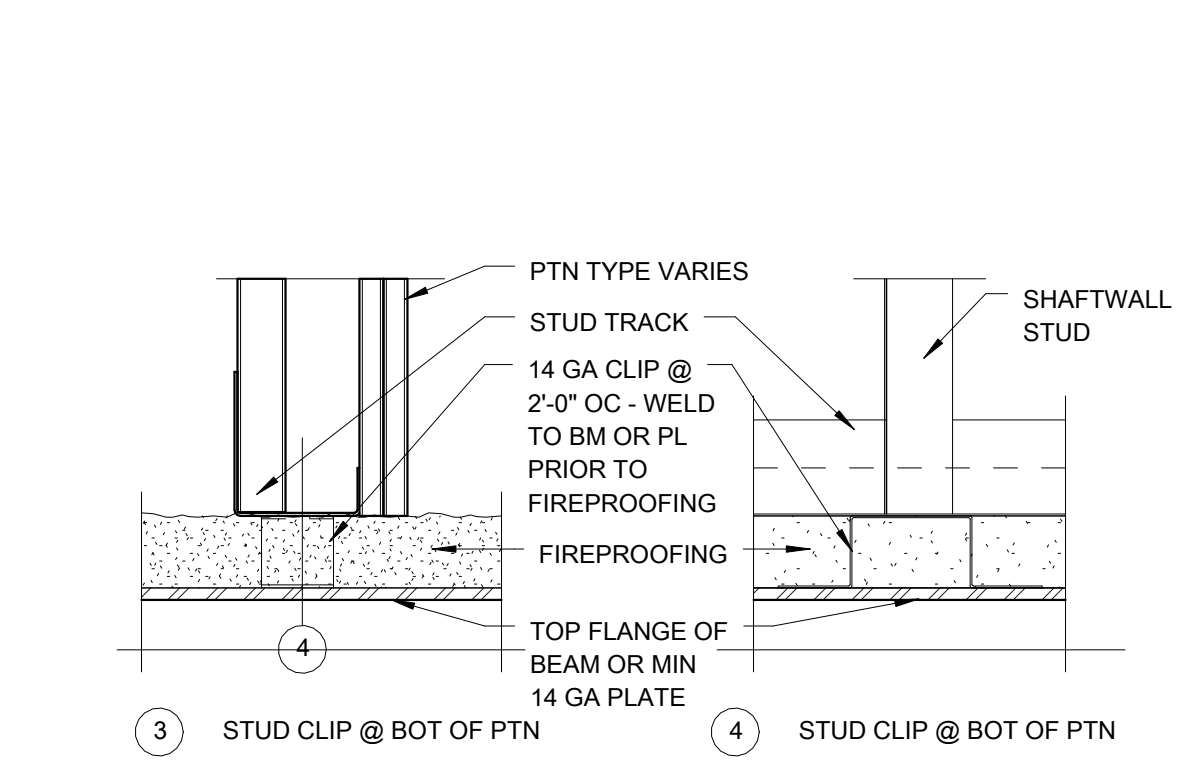
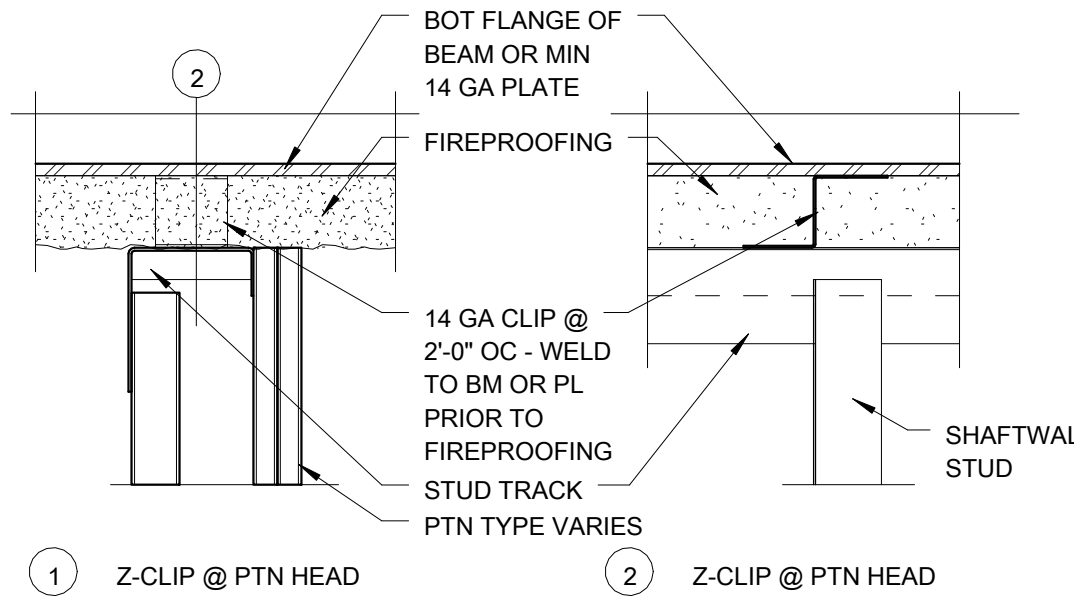
DRYWALL PARTITION AT CONCRETE BEAM  
RFI 07145



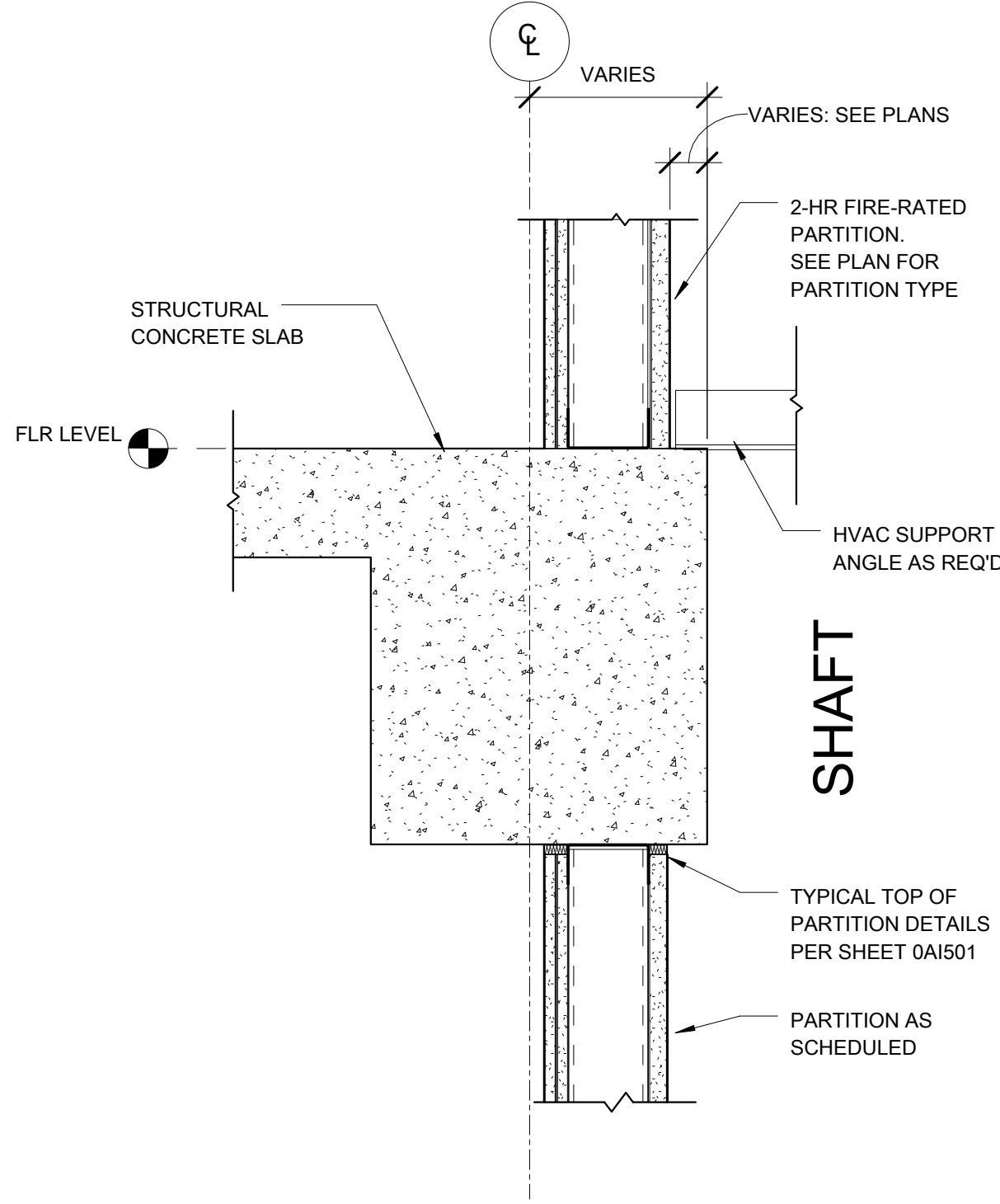
DRYWALL PARTITION AT CONCRETE BEAM  
RFI 07145



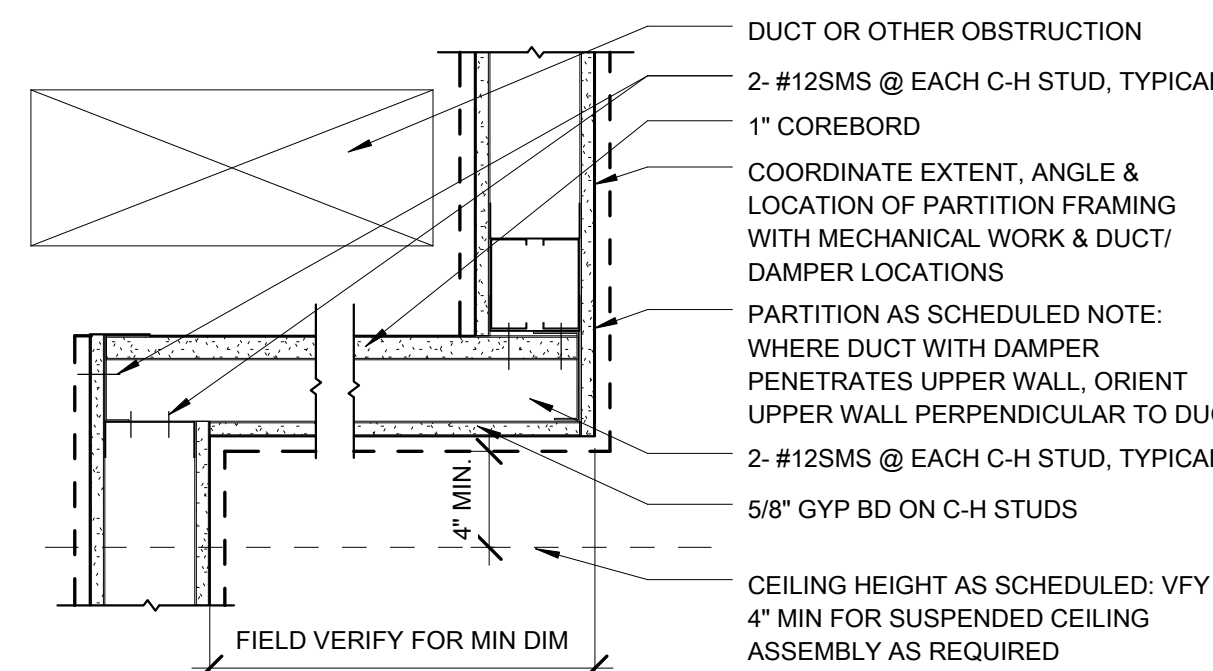
A3 TYP RATED PARTITION HEAD @ STL BM  
SCALE: 3\"/>



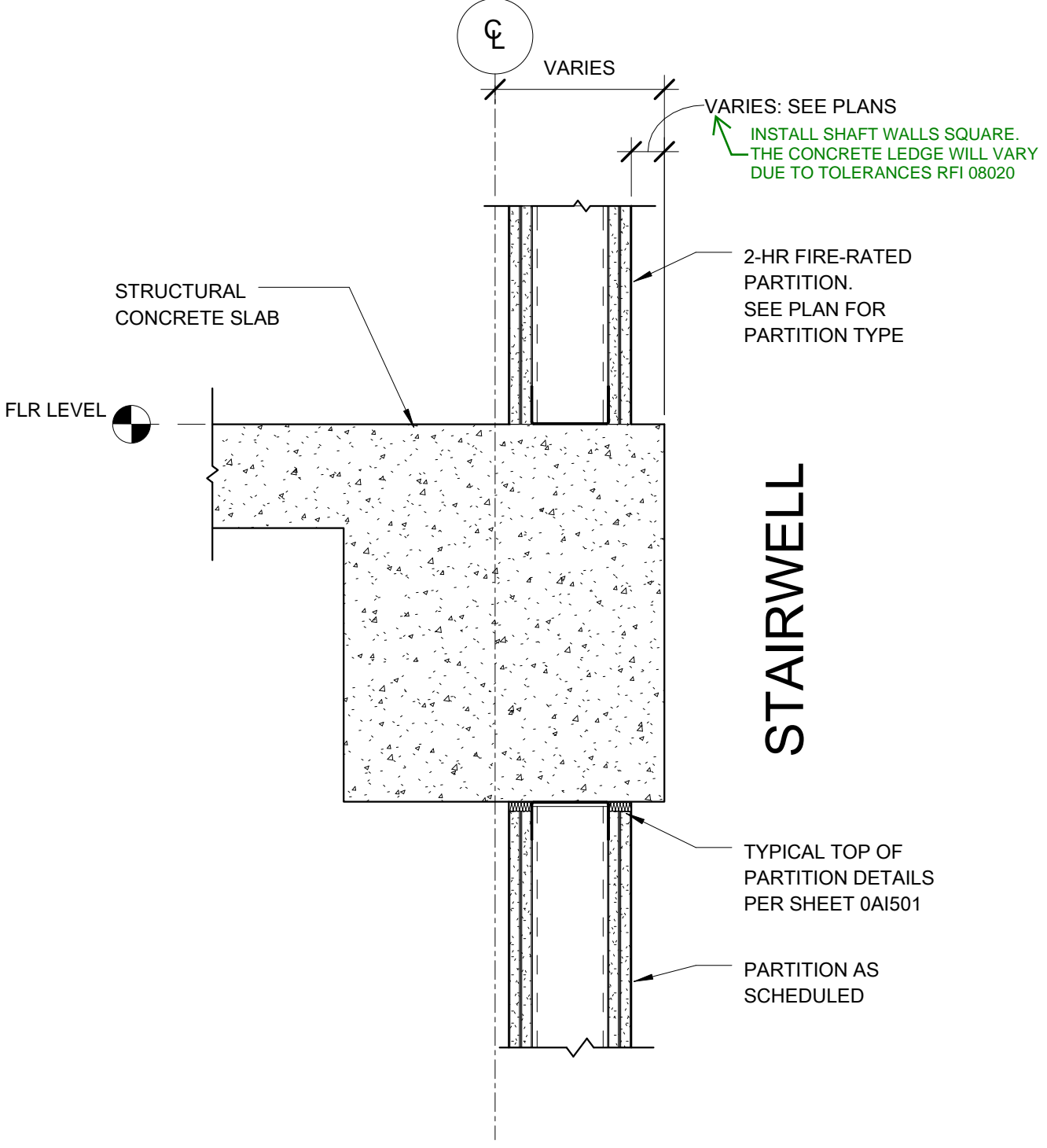
C3 PARTITION CLIPS @ FIREPROOFED STL  
SCALE: 3\"/>



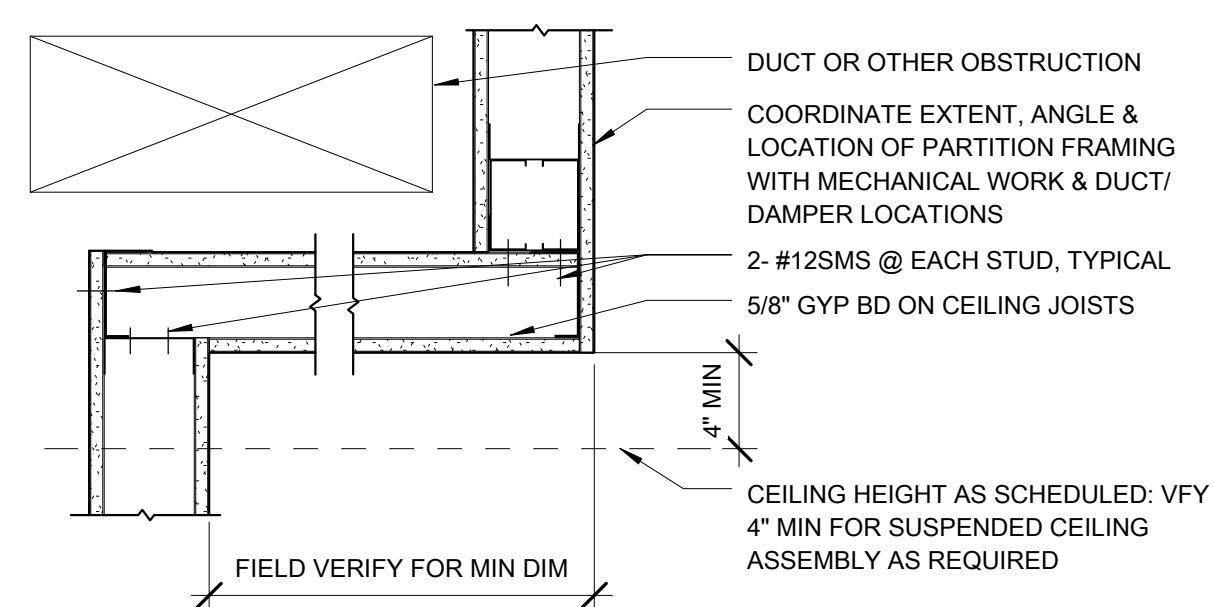
B2 TYP EDGE OF SLAB AT MECH SHAFT  
SCALE: 1 1/2\"/>



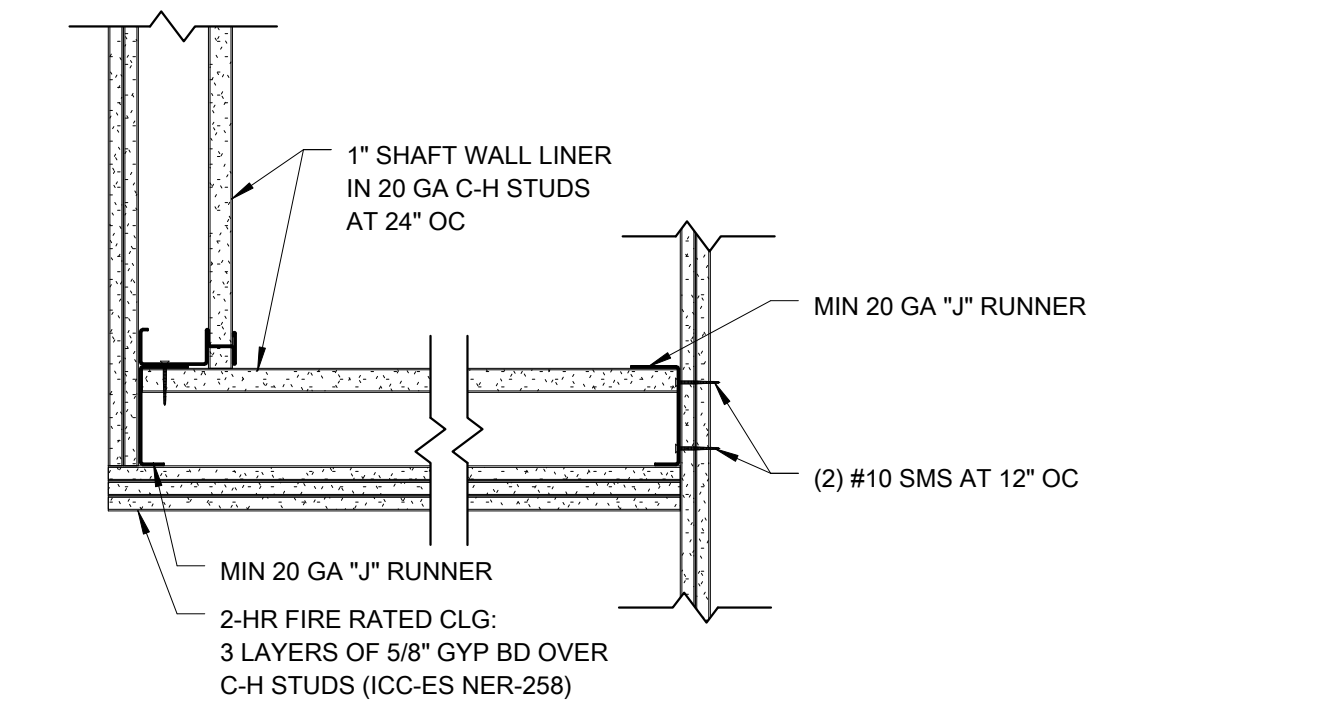
B2 TYP EDGE OF SLAB AT MECH SHAFT  
SCALE: 1 1/2\"/>



B1 TYP EDGE OF SLAB AT STAIRWELL  
SCALE: 1 1/2\"/>

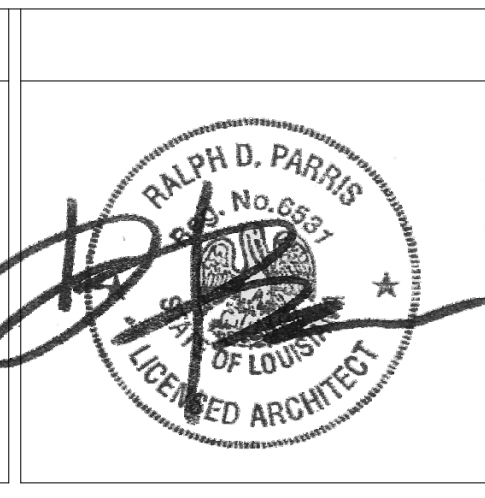


C2 OFFSET PTN - RATED SEPARATION  
SCALE: 1 1/2\"/>



D1 BOTTOM OF RATED HORIZ SHAFT  
SCALE: 1 1/2\"/>

| REVISIONS: | DATE | CONSULTANTS:                                       |
|------------|------|--|
|            |      | DESMAN ASSOCIATES / PARKING                        |
|            |      | CODE CONSULTANTS, INC. / CODE CONSULTANT           |
|            |      | THE SEXTANT GROUP / AV & ACOUSTICAL                |
|            |      | HAMMER DESIGN ASSOCIATES / FOOD SERVICE            |
|            |      | PYBURN & ODOM / ABATEMENT                          |
|            |      | TATA & HOWARD / TANK CONSULTANT                    |
|            |      | I.S.C. GROUP, INC. / IRRIGATION                    |
|            |      | DAN EUSER WATER ARCHITECTURE, INC. / WATER FEATURE |



ARCHITECT/ENGINEERS:

studio **NOVA**

SCHRENK & PETERSON CONSULTING ENGINEERS / CIVIL  
KORDA/NEMETH ENGINEERING / STRUCTURAL  
BR+A CONSULTING ENGINEERS / MECH, ELECT, PLUMBING, LOW VOLTAGE  
ARCHITECTURAL ENGINEERING / PLUMBING  
SCALES ASSOCIATES / FIRE PROTECTION

DRAWING TITLE  
PARTITION DETAILS

APPROVED: PROJECT DIRECTOR  
*Jade Sanders*

PROJECT TITLE  
SLVHCS REPLACEMENT MEDICAL CENTER PROJECT

LOCATION  
NEW ORLEANS, LOUISIANA

DATE  
July 16, 2012

CHECKED  
DMK/JK

DRAWN  
ML

CONSTRUCTION DOCUMENTS 1  
FULLY SPRINKLERED

PROJECT NUMBER  
100342.00

BUILDING NUMBER  
08

DOCUMENT SET PACKAGE  
WP\_09B

DRAWING NUMBER  
8A1503

OFFICE OF  
CONSTRUCTION  
AND FACILITIES  
MANAGEMENT

Department of  
Veterans Affairs