

ONE INCH = FORTY FEET (1" = 40')

THREE INCHES = ONE FOOT

ONE AND ONE HALF INCHES = ONE FOOT

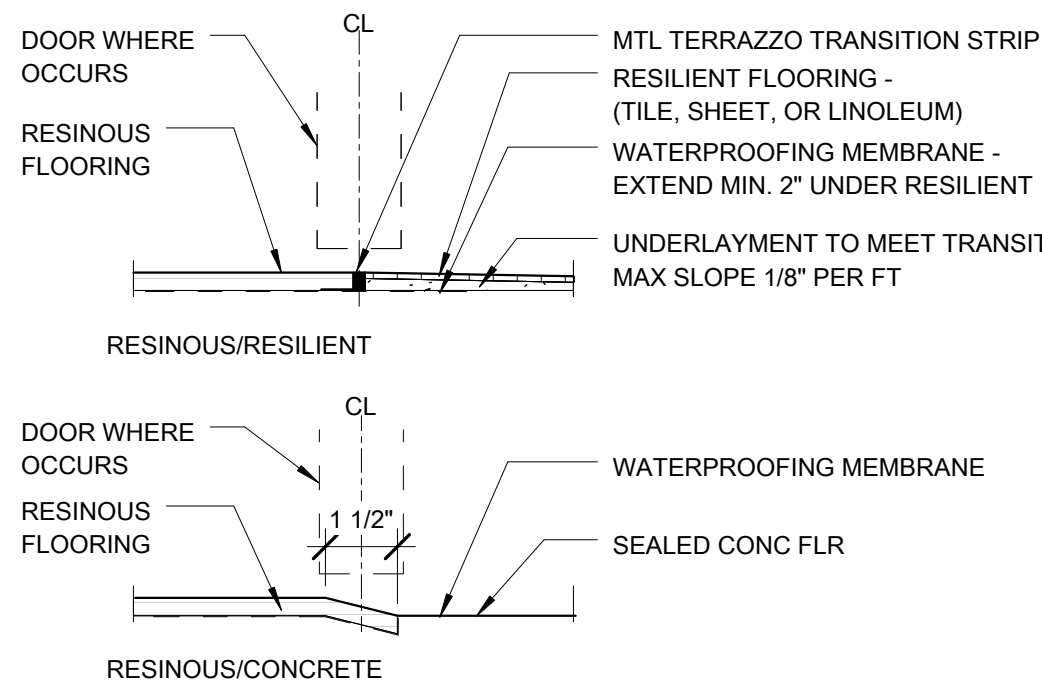
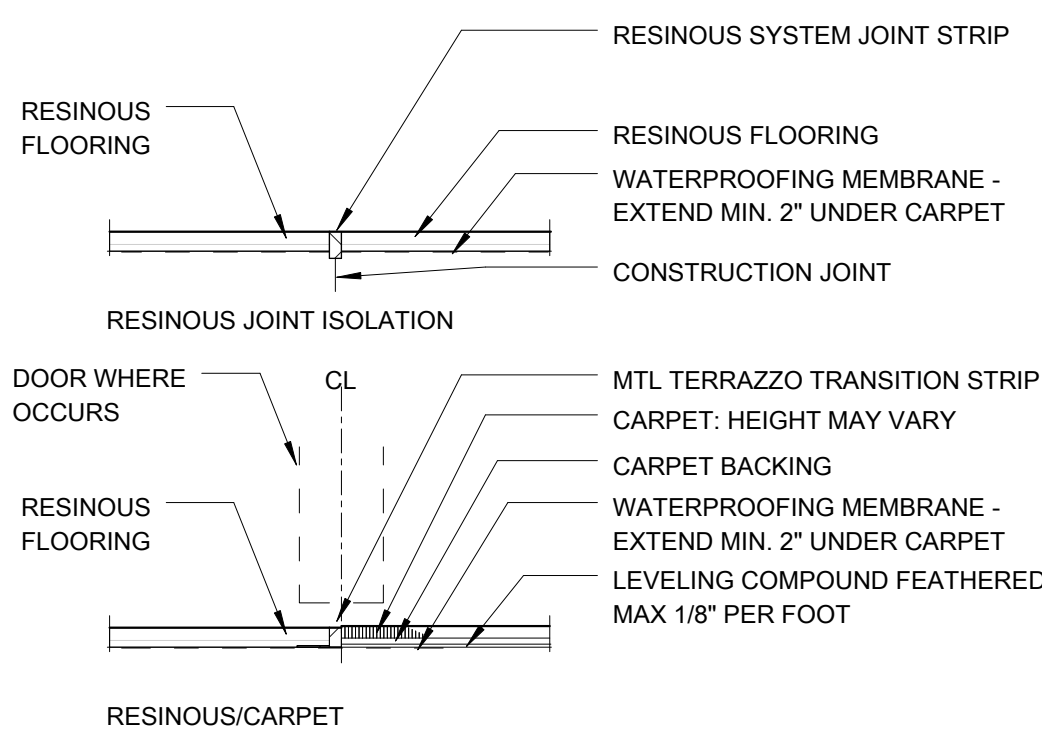
THREE QUARTERS INCH = ONE FOOT

ONE HALF INCH = ONE FOOT

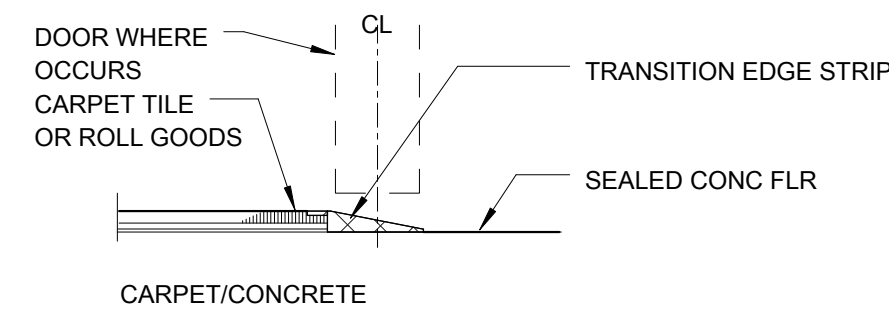
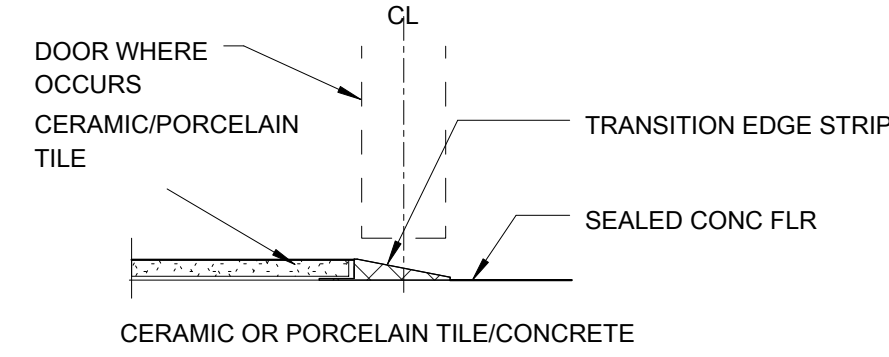
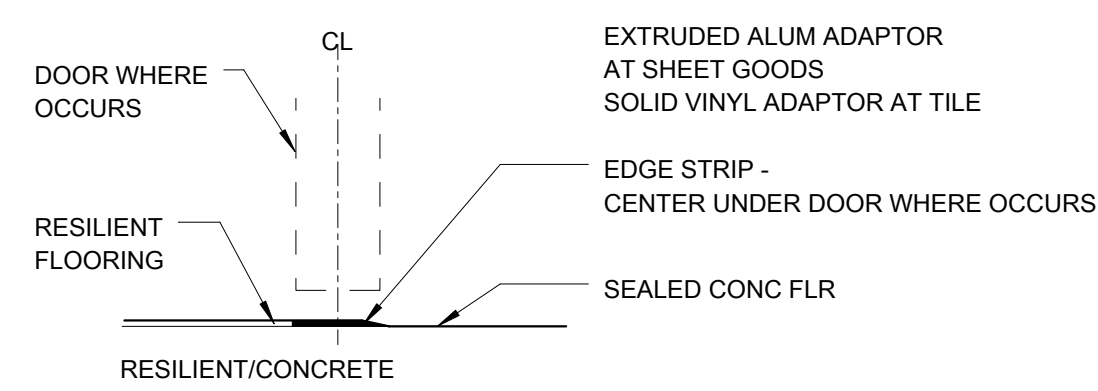
ONE QUARTER INCH = ONE FOOT

ONE EIGHT INCH = ONE FOOT

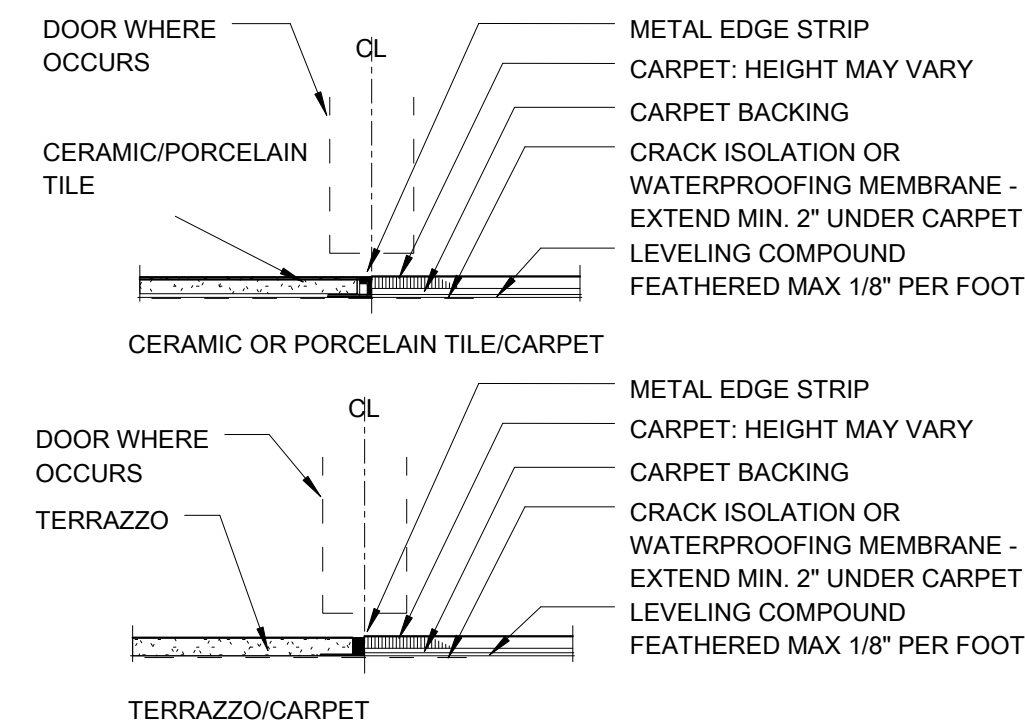
ONE SIXTEENTH INCH = ONE FOOT

**B4 TYPICAL RESINOUS TRANSITIONS**
SCALE: 3" = 1'-0"

C3020-FLRG_RES_TRANS-01

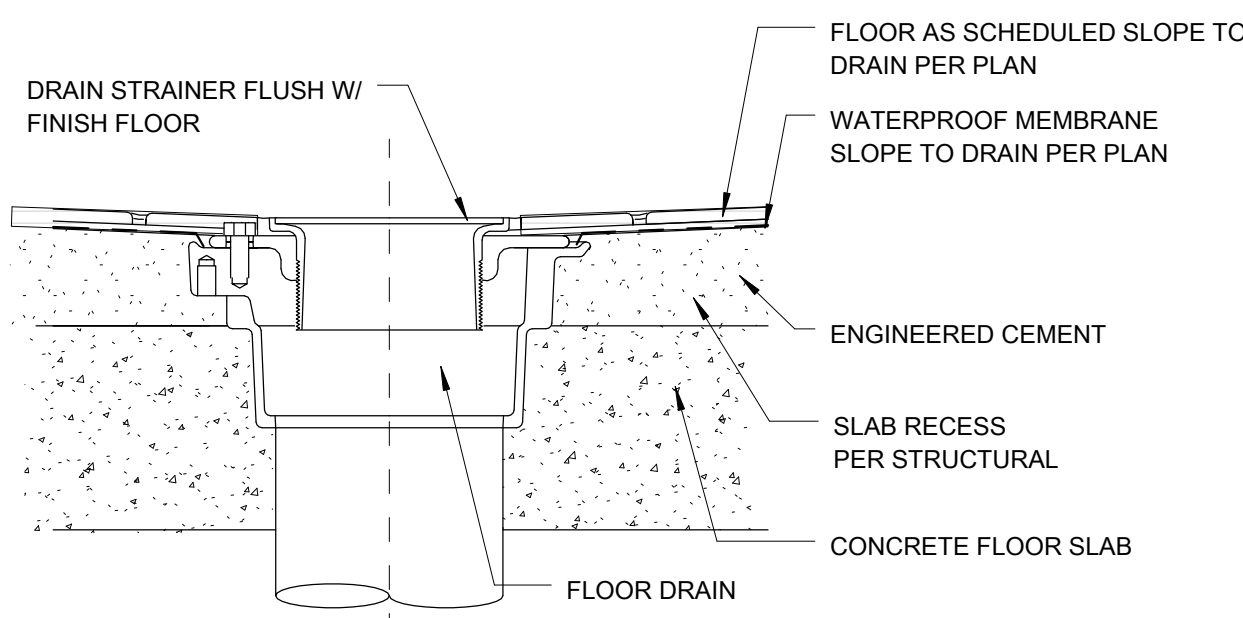
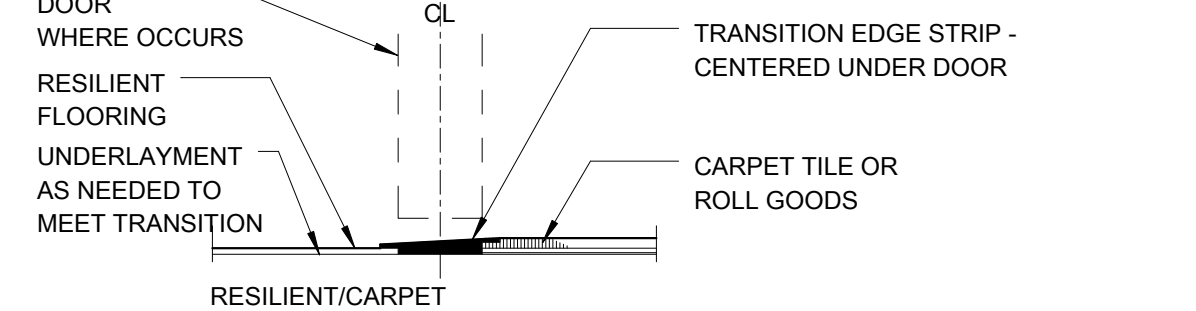
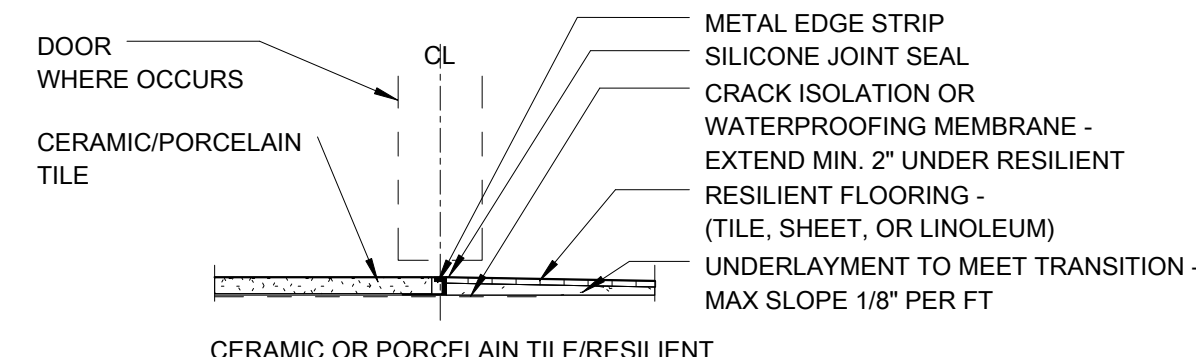
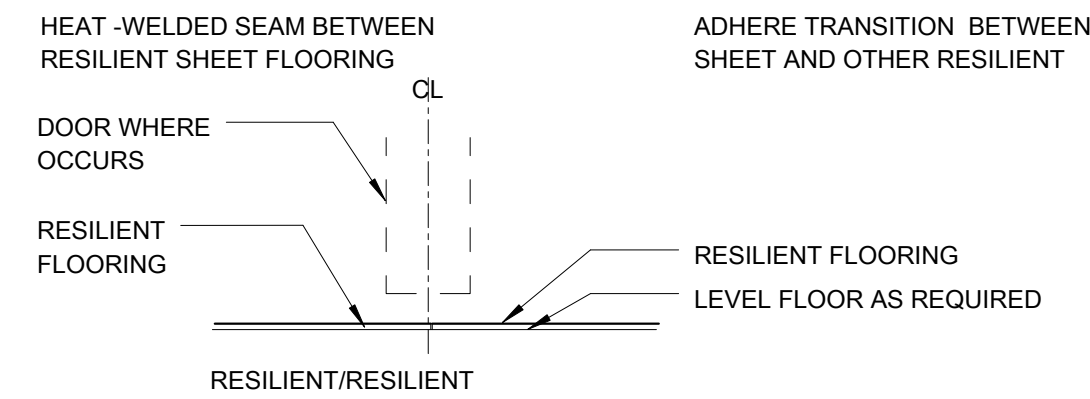
**B3 TYPICAL CONCRETE TRANSITIONS**
SCALE: 3" = 1'-0"

C3020-FLRG_CONC_TRANS-01

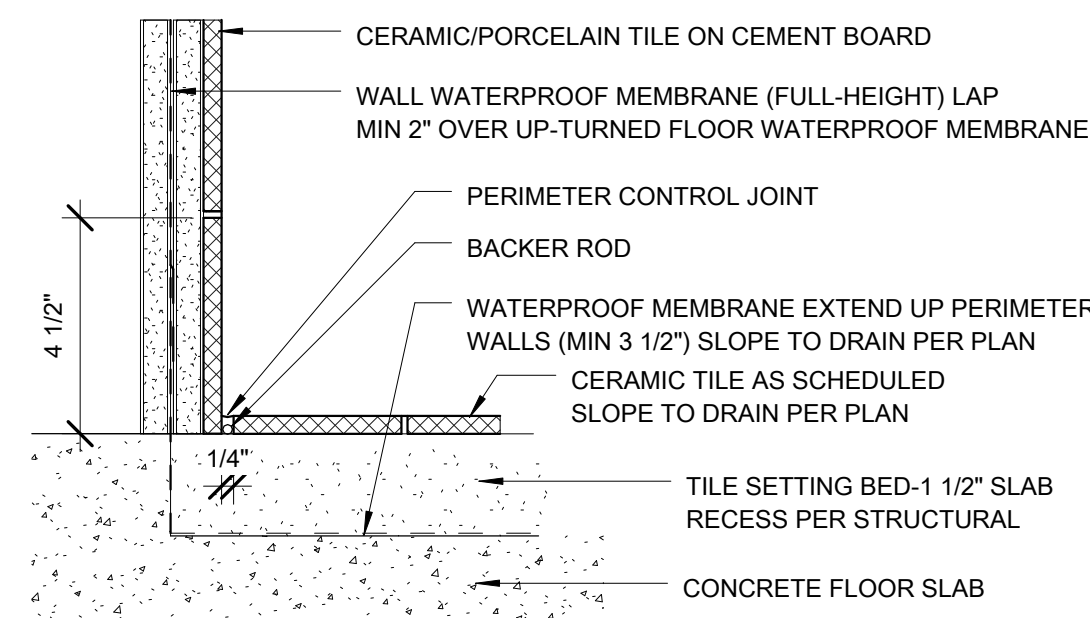
**B2 TYPICAL FLOORING TRANSITIONS**
SCALE: 3" = 1'-0"

TERRAZZO AS ADD ALTERNATE FOR CTF-1/2/3

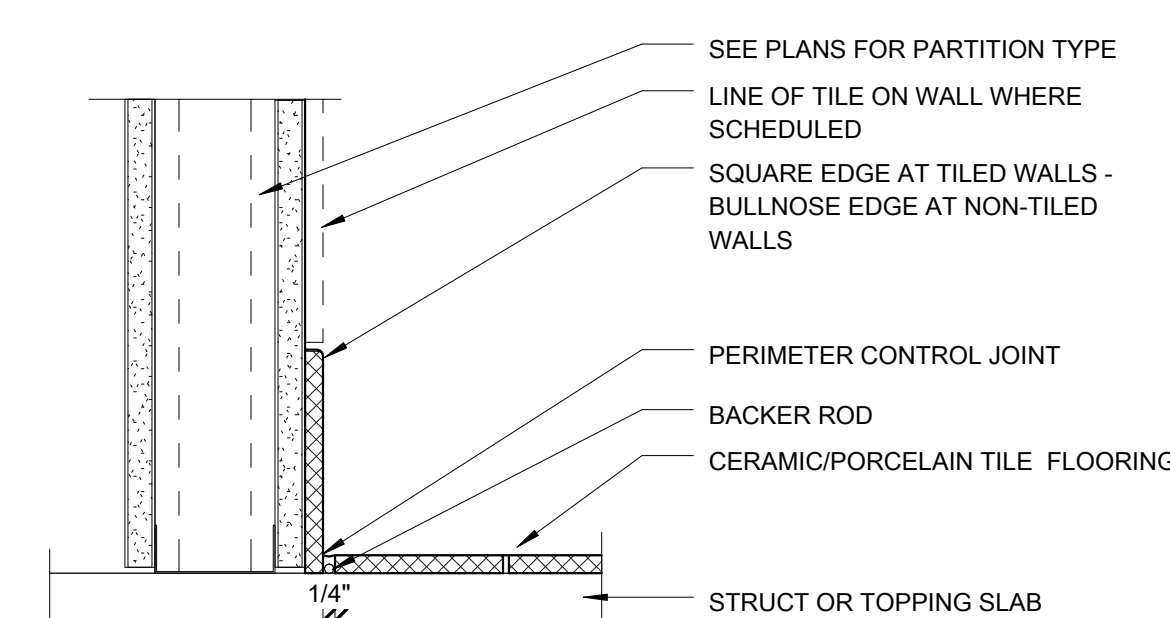
C3021-FLRG_FINS_TRANSIONS-01

**C4 FLOOR DRAIN**
SCALE: 3" = 1'-0"

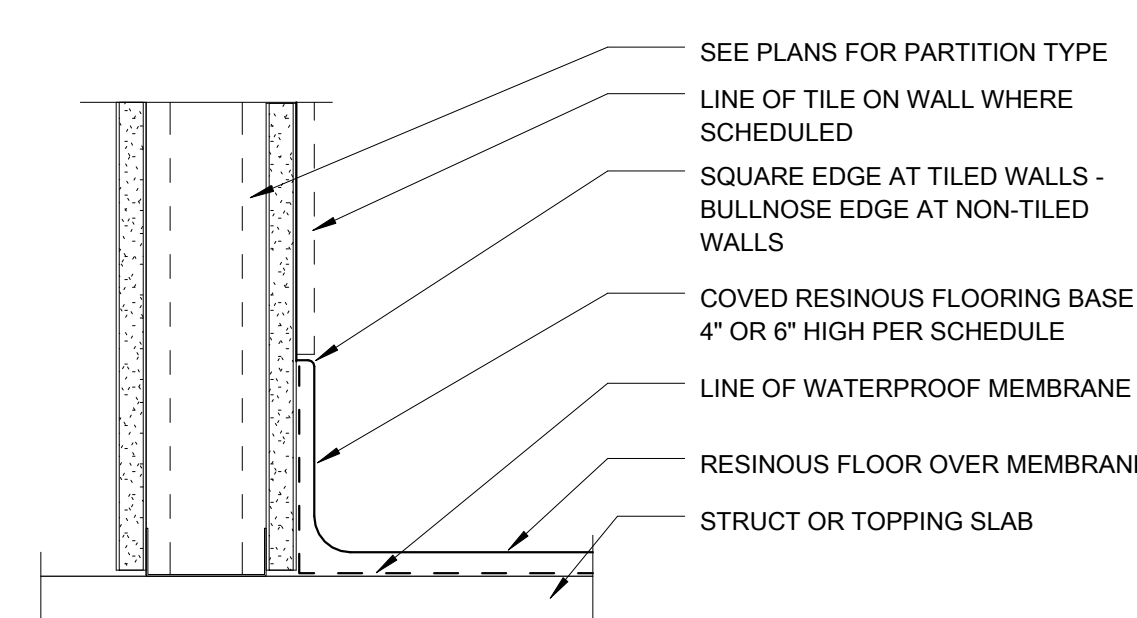
C3024-FLR_DRAIN_RES-01

**C3 FLOOR / WALL TRANSITION - CT**
SCALE: 3" = 1'-0"

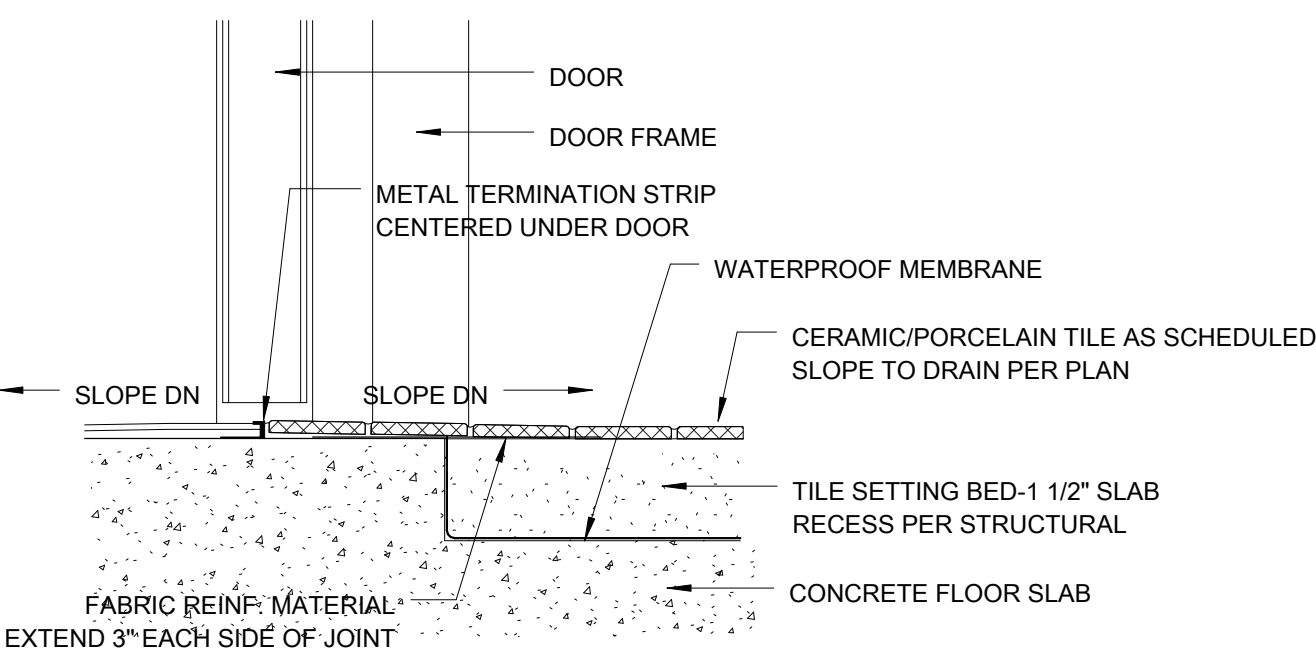
C3024-FLR-WALL_CT-01

**C2 FLOOR / WALL TRANSITION - CT OR GYP BD**
SCALE: 3" = 1'-0"

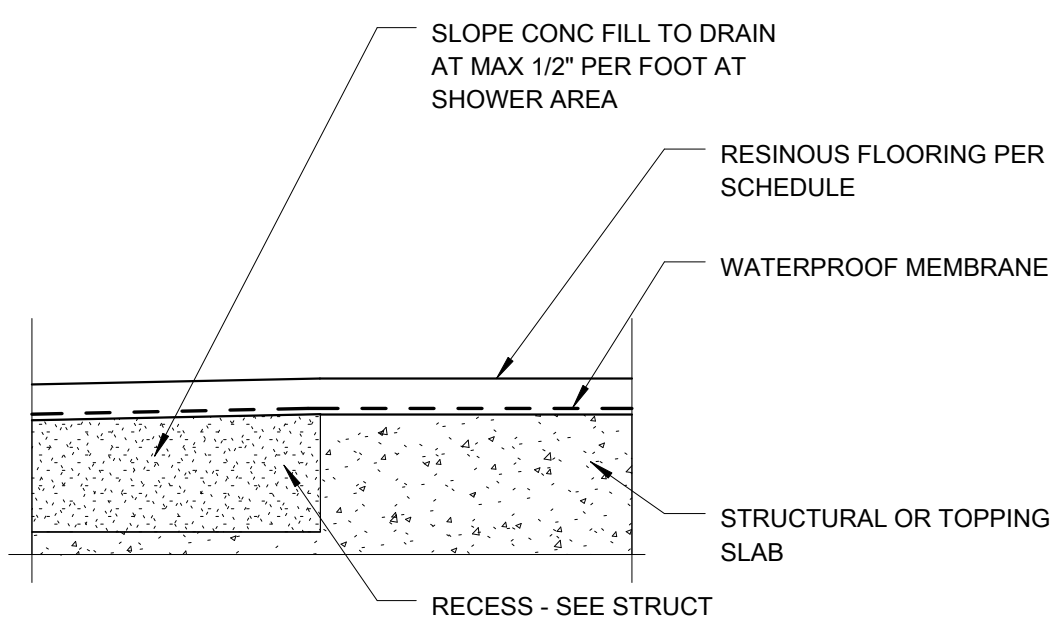
C3026-BASE_CT_COVE-02

**C1 INTEGRAL RESINOUS COVERED BASE**
SCALE: 3" = 1'-0"

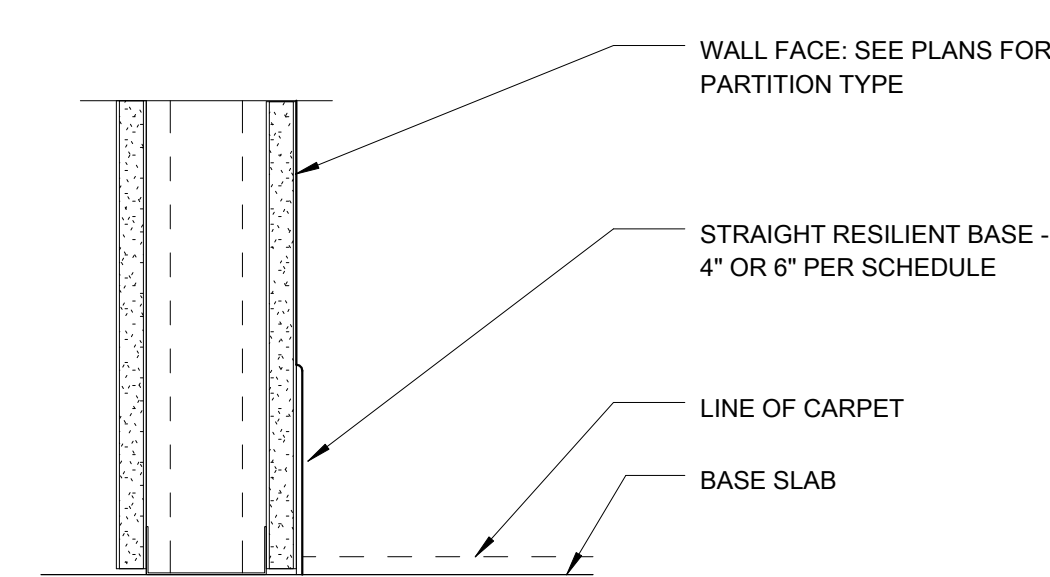
C3026-BASE_INTEGRAL_COVE-01

**D4 CT / RESIL FLR TRANSITION @ DR OPNG**
SCALE: 3" = 1'-0"

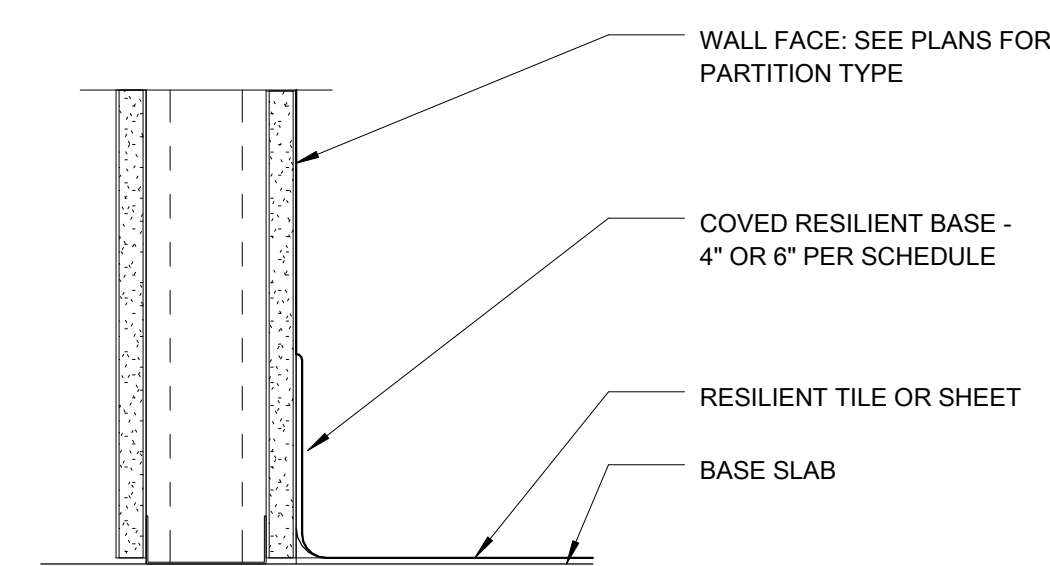
C3024-FLR_CT_RESIL_AT_DR-01

**E4 CURBLESS SHOWER @ RESINOUS FLRG**
SCALE: 6" = 1'-0"

C3021-FLR_SHWR_RECESS_RESIN-01

**D1 STRAIGHT RESILIENT BASE**
SCALE: 3" = 1'-0"

C3026-BASE_STRAIGHT_RESIL-01

**E1 COVED RESILIENT BASE**
SCALE: 3" = 1'-0"

C3026-BASE_RESIL_COVE-01

CONSULTANTS:

DESMAN ASSOCIATES / PARKING
CODE CONSULTANTS, INC. / CODE CONSULTANT
THE SEXTANT GROUP / AV & ACOUSTICAL
HAMMER DESIGN ASSOCIATES / FOOD SERVICE
PYBURN & ODOM / ABATEMENT
TATA & HOWARD / TANK CONSULTANT
I.S.C. GROUP, INC. / IRRIGATION
DAN EUSER WATER ARCHITECTURE, INC. / WATER FEATURE

ARCHITECT/ENGINEERS:

studio **NOVA**
SCHRENK & PETERSON CONSULTING ENGINEERS / CIVIL
KORDA/NEMETH ENGINEERING / STRUCTURAL
BR+A CONSULTING ENGINEERS / MECH. ELECT. PLUMBING, LOW VOLTAGE
ARCHITECTURAL ENGINEERING / PLUMBING
SCALES ASSOCIATES / FIRE PROTECTION

DRAWING TITLE
FLOORING DETAILS

APPROVED: PROJECT DIRECTOR

PROJECT TITLE
SLVHCS REPLACEMENT MEDICAL
CENTER PROJECTLOCATION
NEW ORLEANS, LOUISIANADATE
July 16, 2012CHECKED
ANDRAWN
MLPROJECT NUMBER
100342.00
BUILDING NUMBER
08
DOCUMENT SET PACKAGE
WP_09B

DRAWING NUMBER

8A1515

CONSTRUCTION DOCUMENTS 1
FULLY SPRINKLEREDOFFICE OF
CONSTRUCTION
AND FACILITIES
MANAGEMENT Department of
Veterans Affairs