

A

ONE INCH = FORTY FEET (1" = 40')

B

THREE INCHES = ONE FOOT

C

ONE AND ONE HALF INCHES = ONE FOOT

D

THREE QUARTERS INCH = ONE FOOT

E

ONE HALF INCH = ONE FOOT

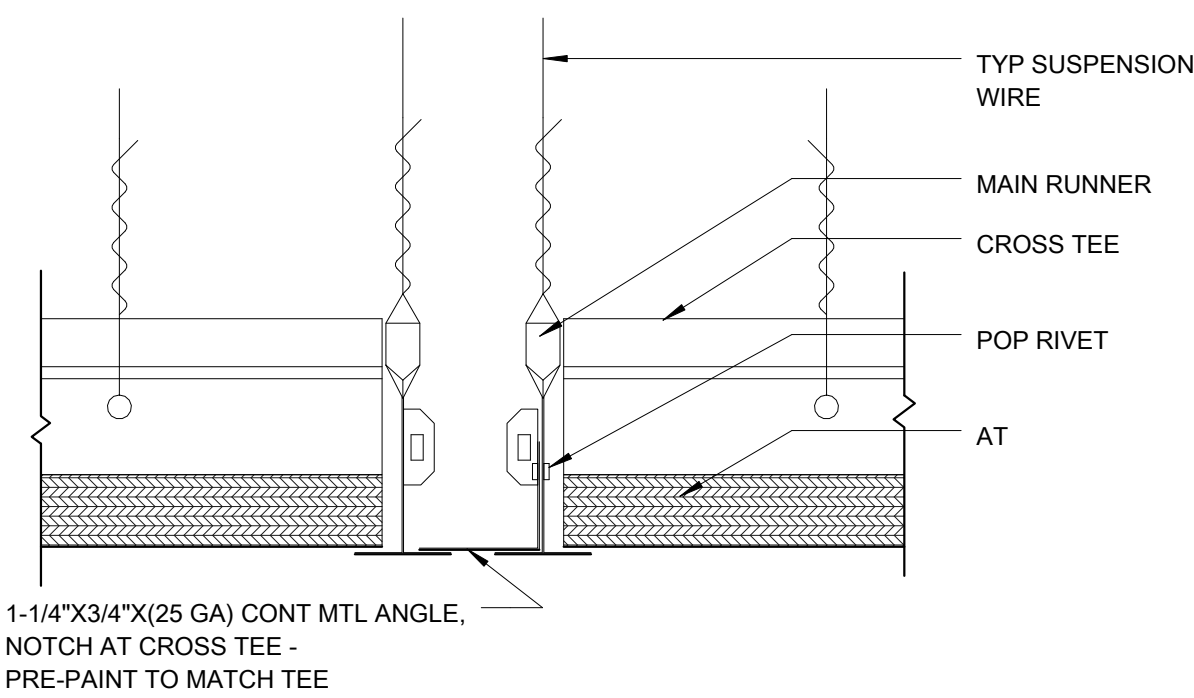
F

ONE QUARTER INCH = ONE FOOT

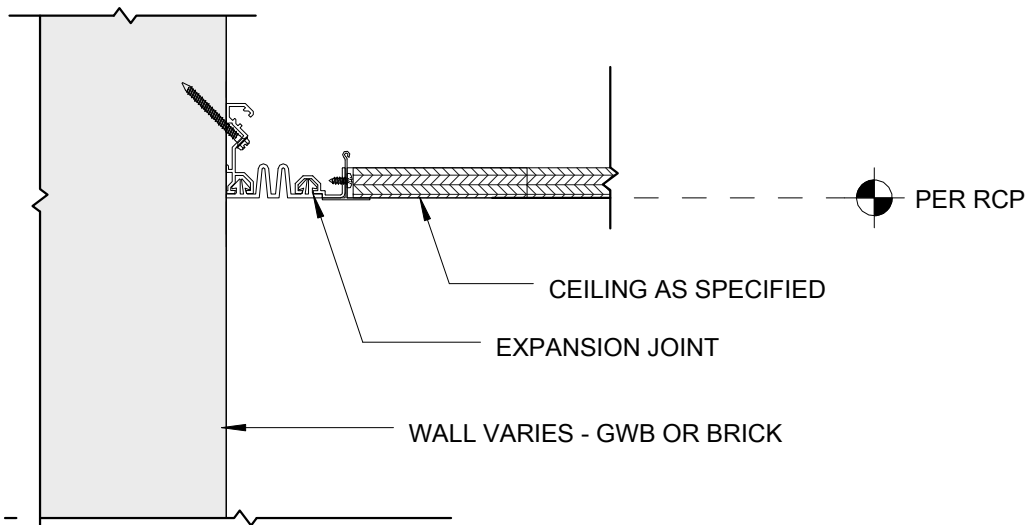
F

ONE EIGHT INCH = ONE FOOT

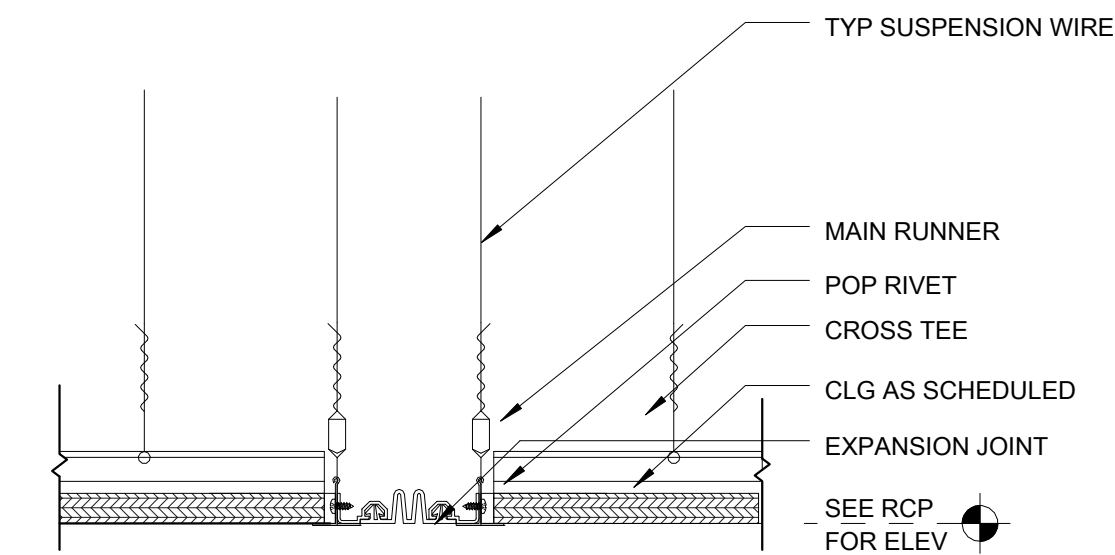
ONE SIXTEENTH INCH = ONE FOOT



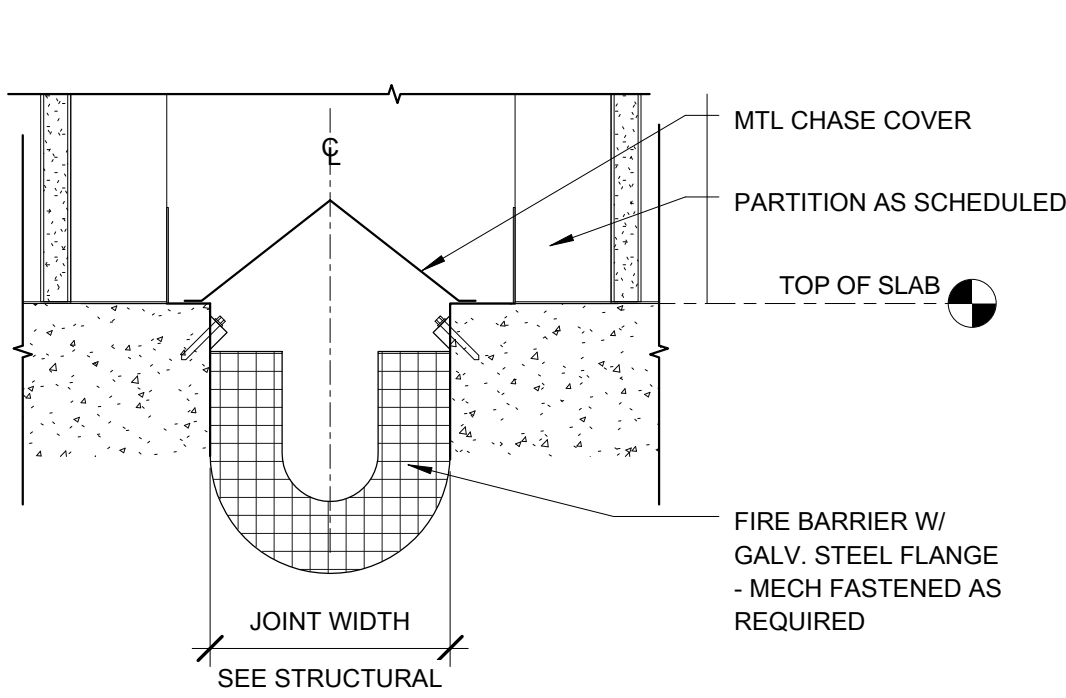
**A4 EJ COVER: ECC-B**  
SCALE: 6" = 1'-0"



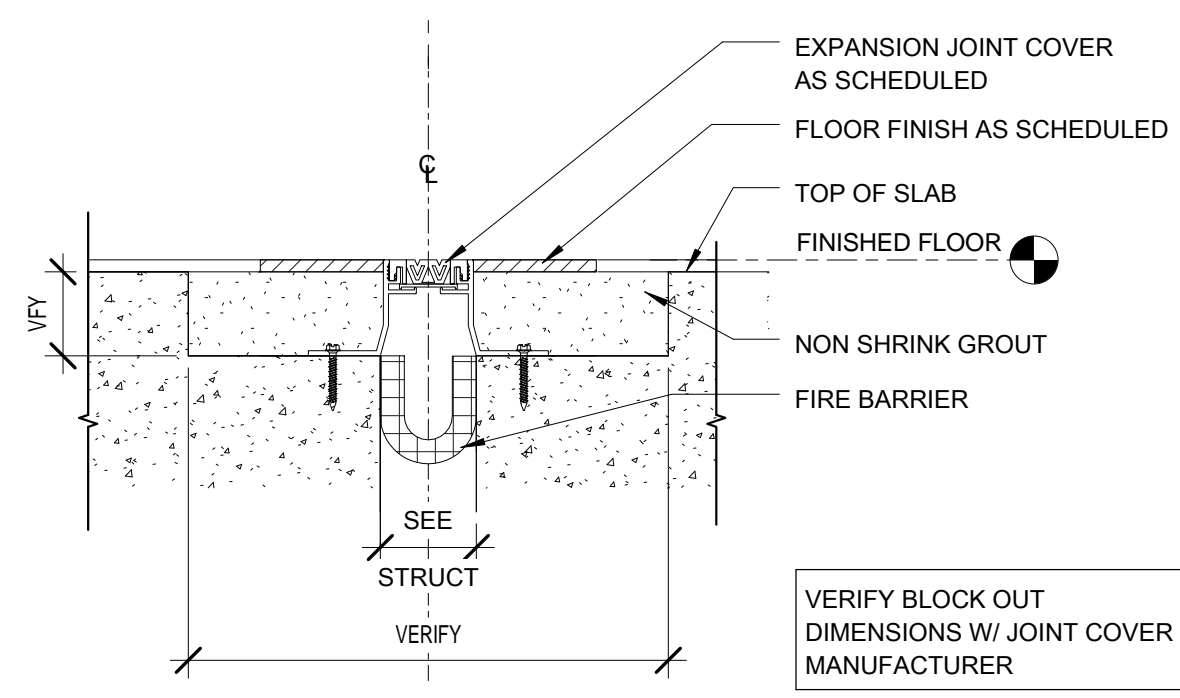
**B4 EJ COVER: TYPE ECW-A**  
SCALE: 3" = 1'-0"



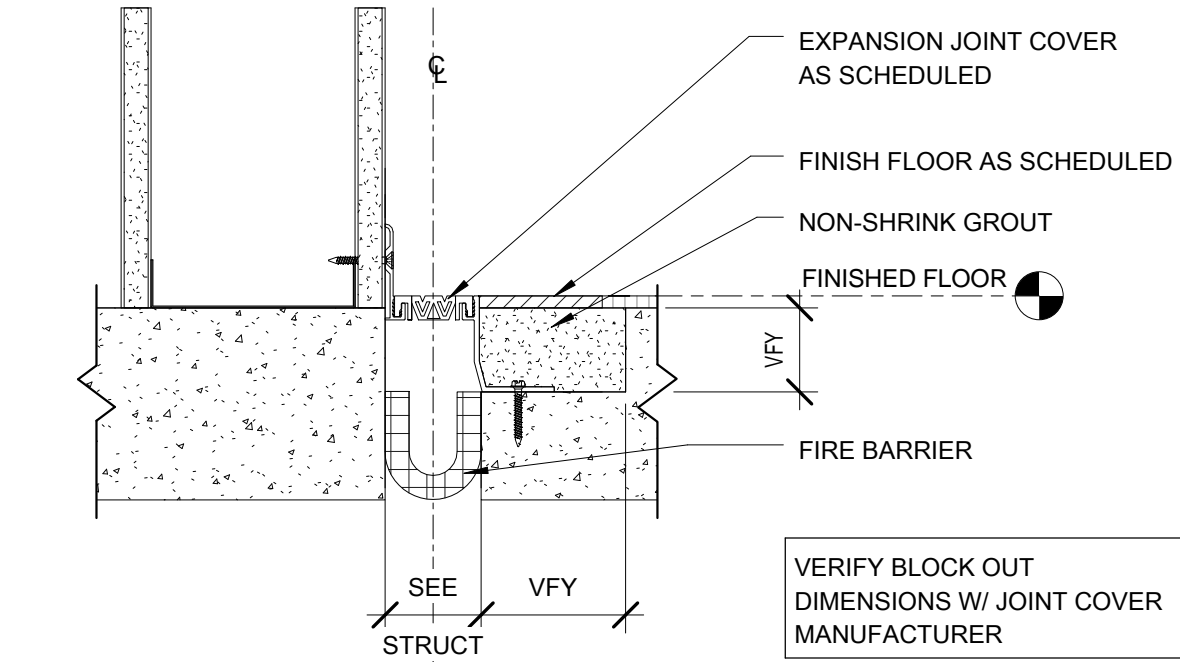
**C4 EJ COVER: TYPE ECC-A**  
SCALE: 3" = 1'-0"



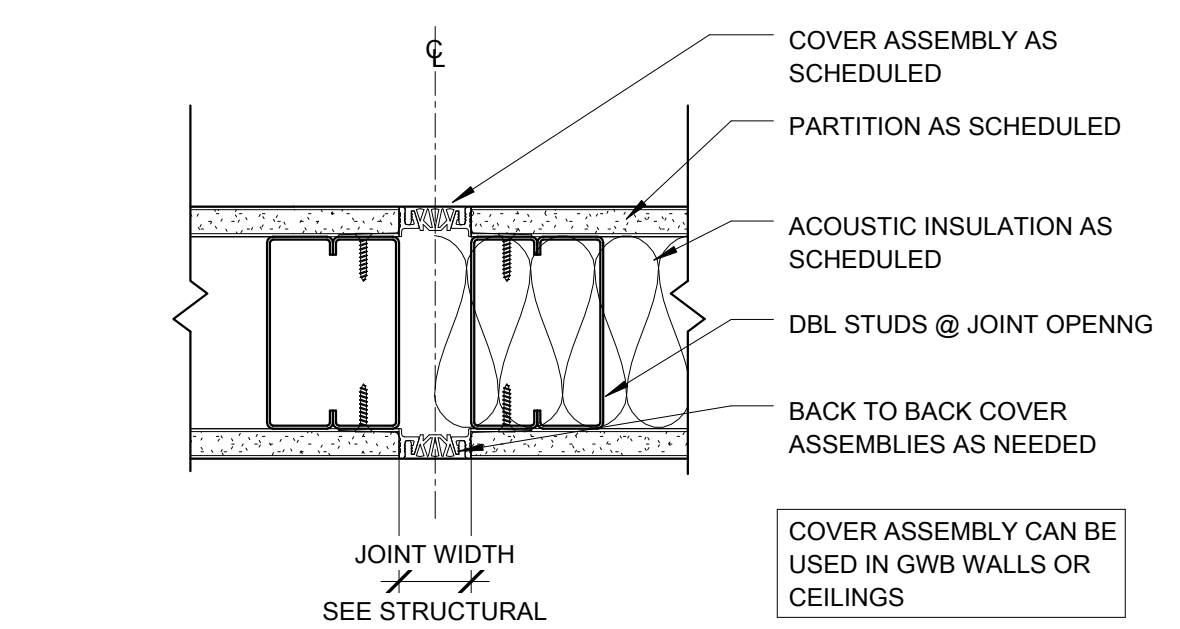
**A3 EJ COVER: TYPE EFF-D**  
SCALE: 3" = 1'-0"



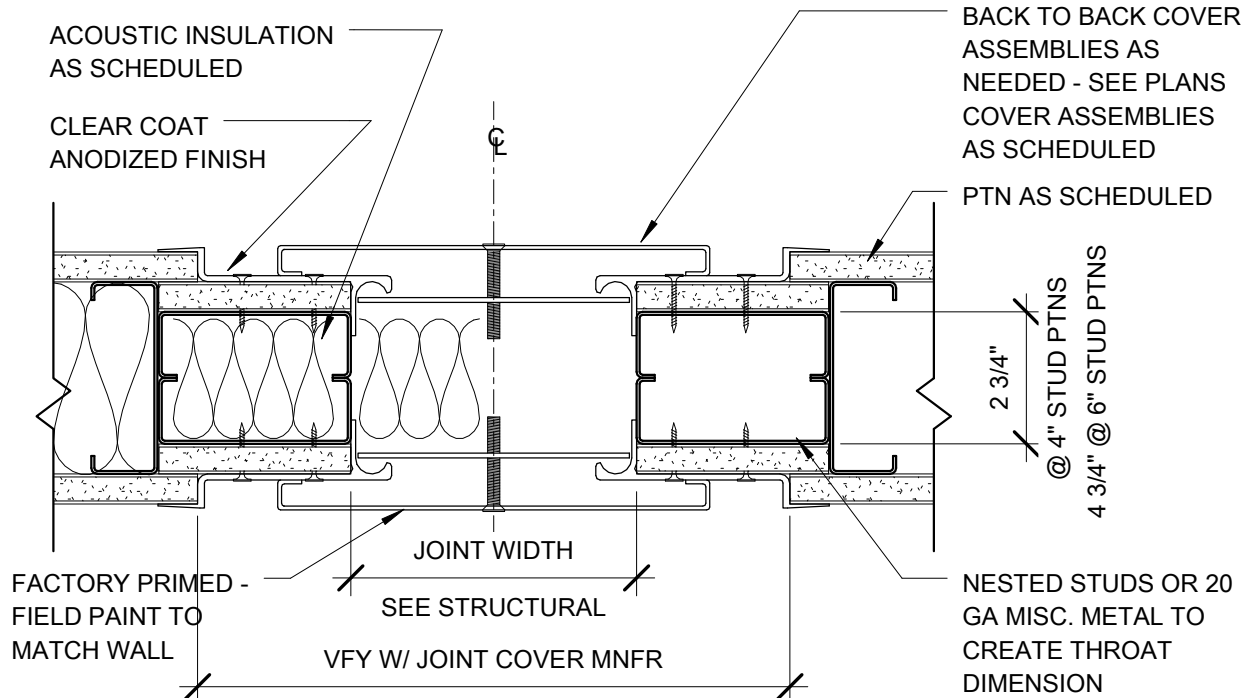
**A2 C4011-EJ\_FLR\_F1**  
SCALE: 3" = 1'-0"



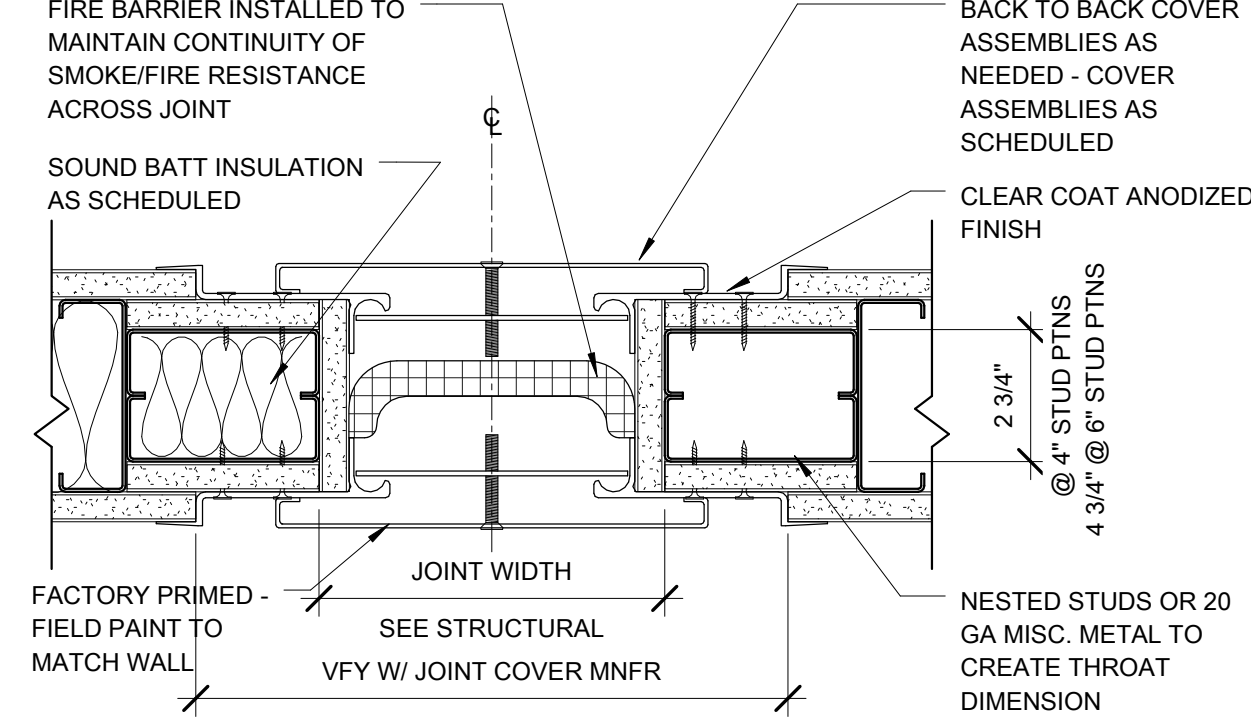
**B2 C4011-EJ\_FLR\_FW1**  
SCALE: 3" = 1'-0"



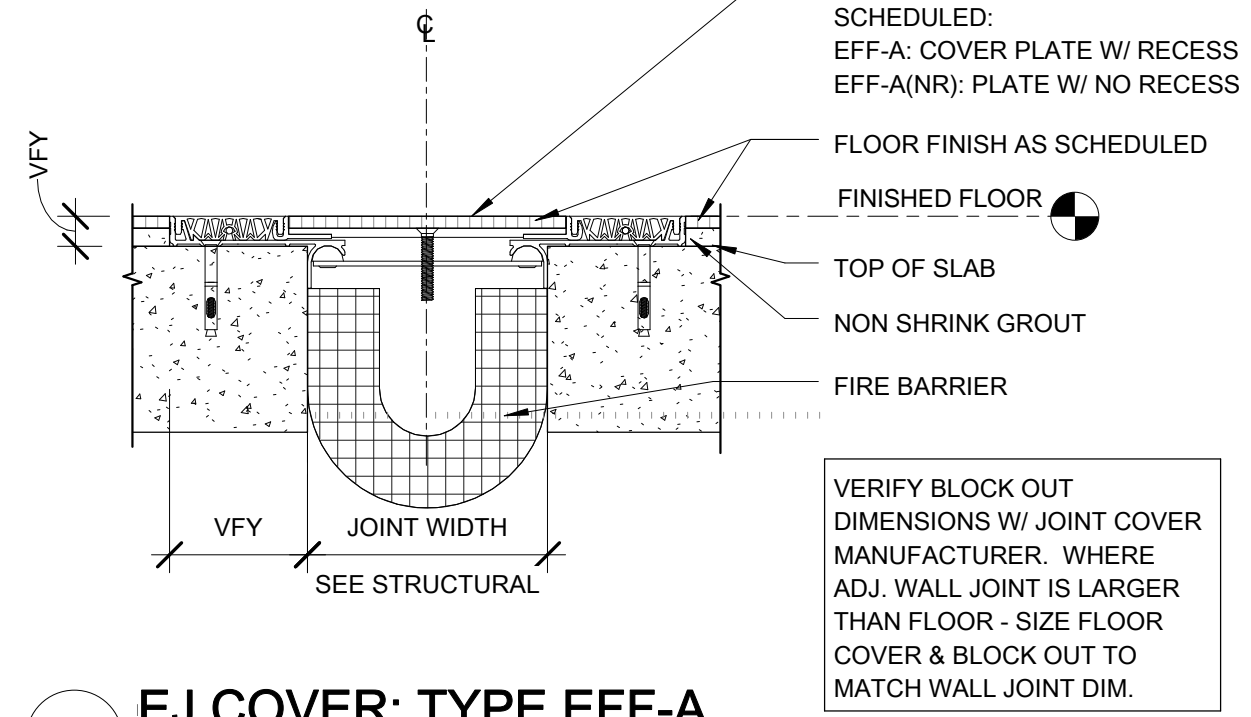
**C2 C4011-EJ\_WALL\_W6**  
SCALE: 3" = 1'-0"



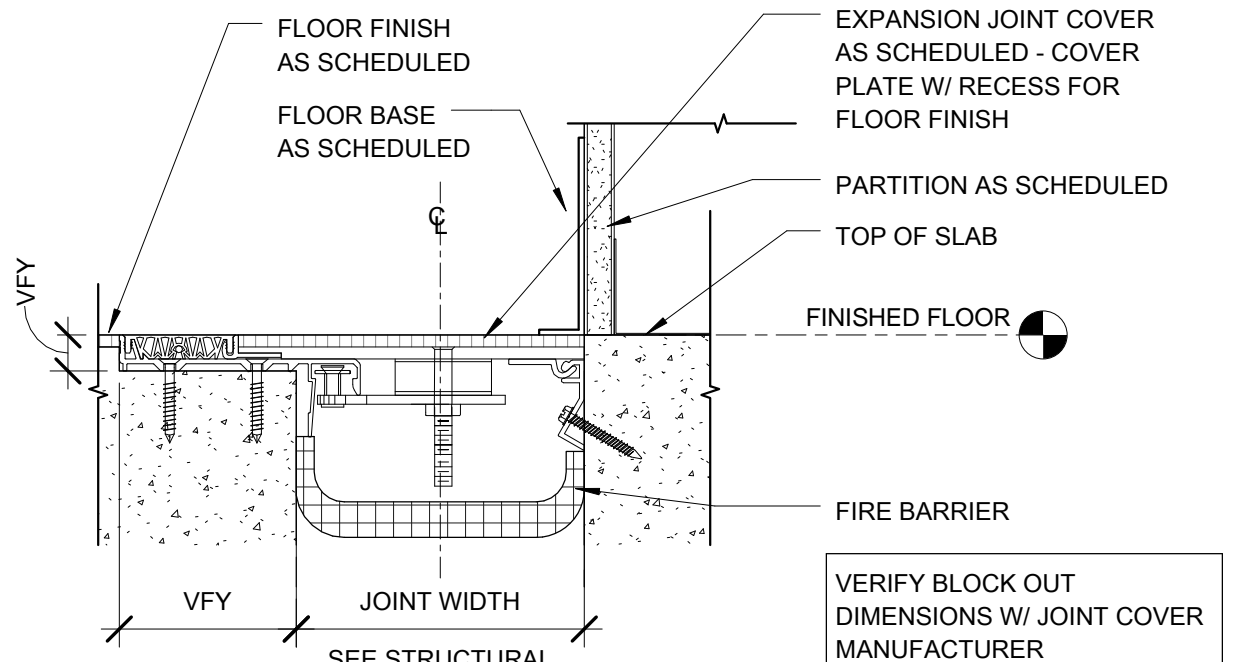
**A1 EJ COVER: TYPE EWW-A - NON RATED**  
SCALE: 3" = 1'-0"



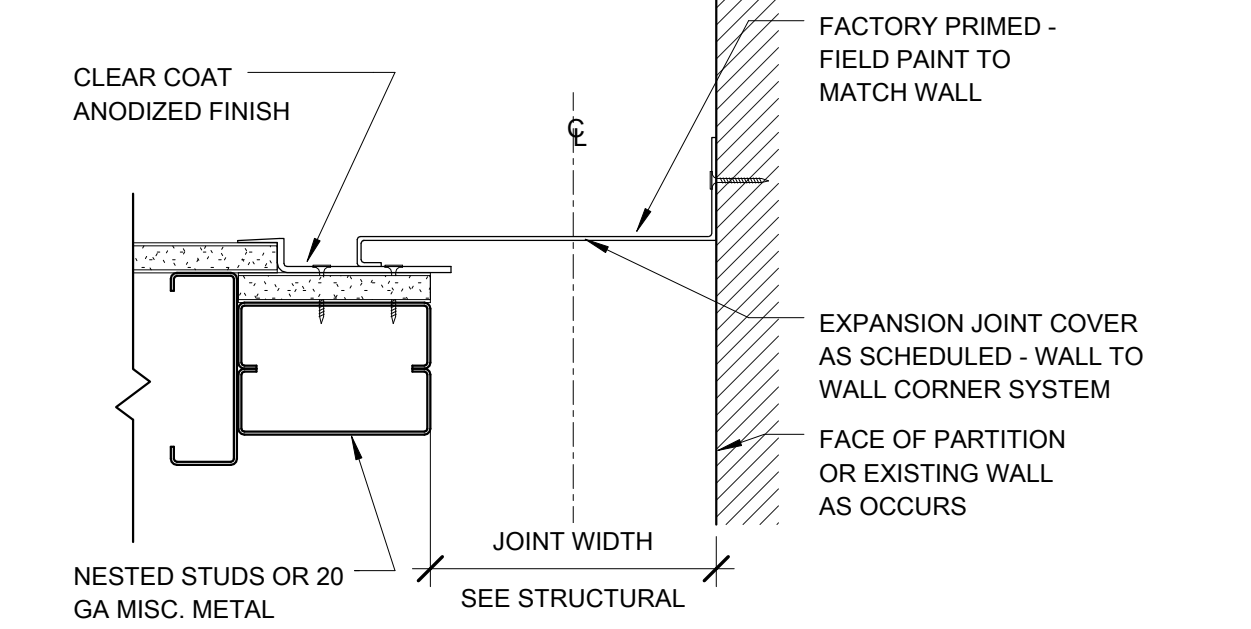
**B1 EJ COVER: TYPE EWW-A - SMOKE/1-HR**  
SCALE: 3" = 1'-0"



**C1 EJ COVER: TYPE EFF-A**  
SCALE: 3" = 1'-0"



**D1 EJ COVER: TYPE EFW-A**  
SCALE: 3" = 1'-0"



**E1 EJ COVER: TYPE EWW-C1 - NON RATED**  
SCALE: 3" = 1'-0"

**CONSULTANTS:**

DESMAN ASSOCIATES / PARKING  
CODE CONSULTANTS, INC. / CODE CONSULTANT  
THE SEXTANT GROUP / AV & ACOUSTICAL  
HAMMER DESIGN ASSOCIATES / FOOD SERVICE  
PYBURN & ODOM / ABATEMENT  
TATA & HOWARD / TANK CONSULTANT  
I.S.C. GROUP, INC. / IRRIGATION  
DAN EUSER WATER ARCHITECTURE, INC. / WATER FEATURE



**ARCHITECT/ENGINEERS:**

studio **NOVA**  
SCHRENK & PETERSON CONSULTING ENGINEERS / CIVIL  
KORDA/NEMETH ENGINEERING / STRUCTURAL  
BR+A CONSULTING ENGINEERS / MECH, ELECT, PLUMBING, LOW VOLTAGE  
ARCHITECTURAL ENGINEERING / PLUMBING  
SCALES ASSOCIATES / FIRE PROTECTION

DRAWING TITLE  
INTERIOR EXPANSION JOINT DETAILS

APPROVED: PROJECT DIRECTOR

*Yadda Sanders*

PROJECT TITLE  
SLVHCS REPLACEMENT MEDICAL  
CENTER PROJECT

LOCATION  
NEW ORLEANS, LOUISIANA

DATE  
July 16, 2012

CHECKED  
DMK/JK

DRAWN  
ML

PROJECT NUMBER  
100342.00  
DOCUMENT SET PACKAGE  
WP\_09B

DRAWING NUMBER

8A1517

OFFICE OF  
CONSTRUCTION  
AND FACILITIES  
MANAGEMENT

Department of  
Veterans Affairs