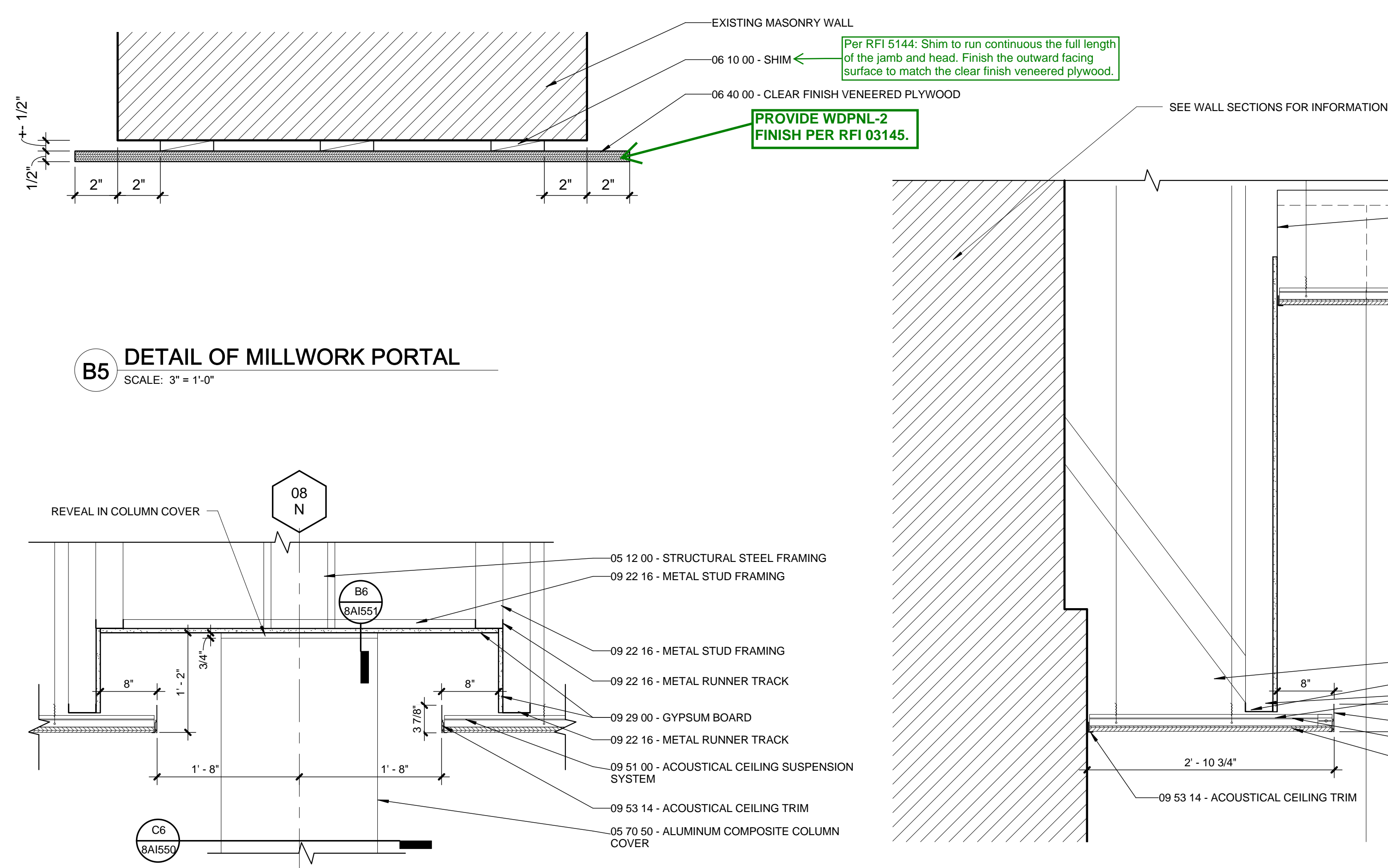
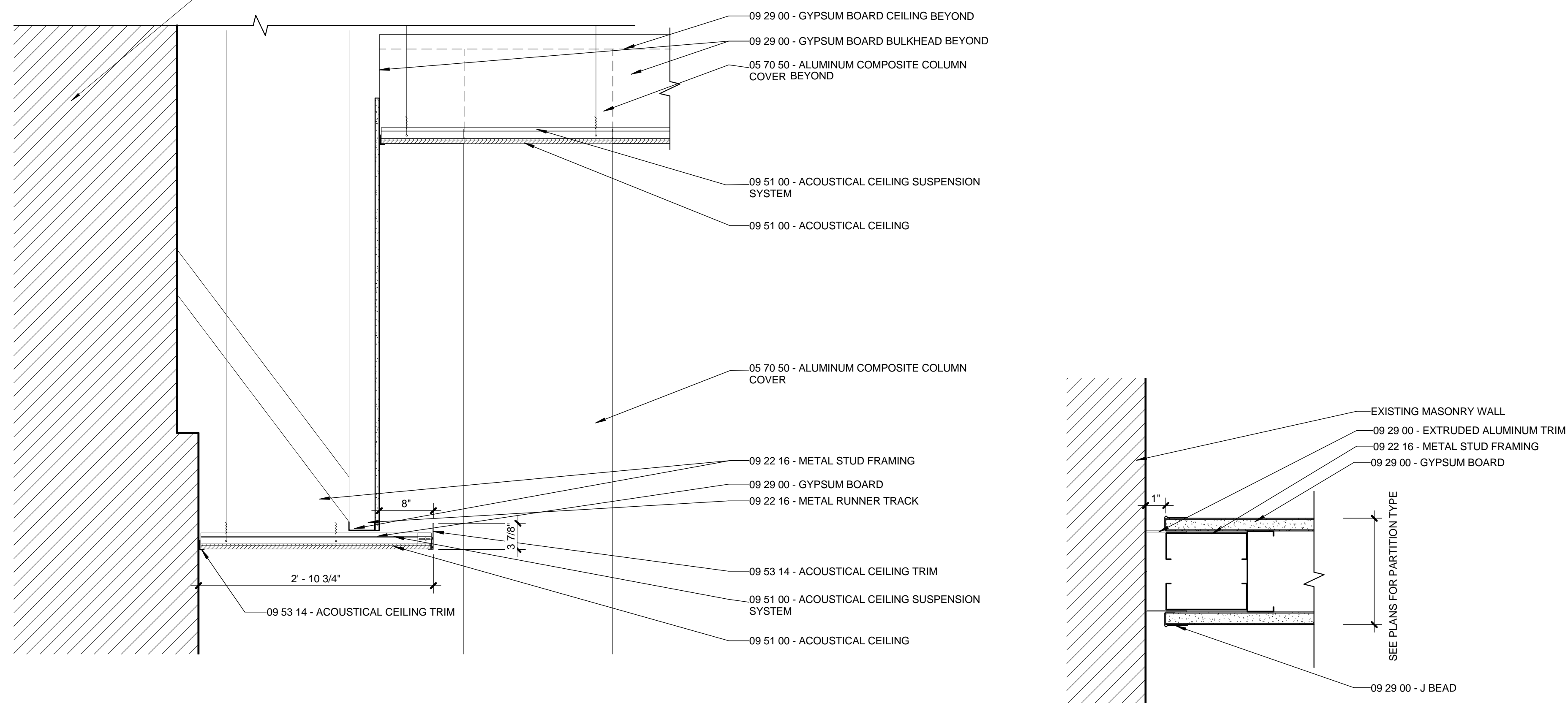


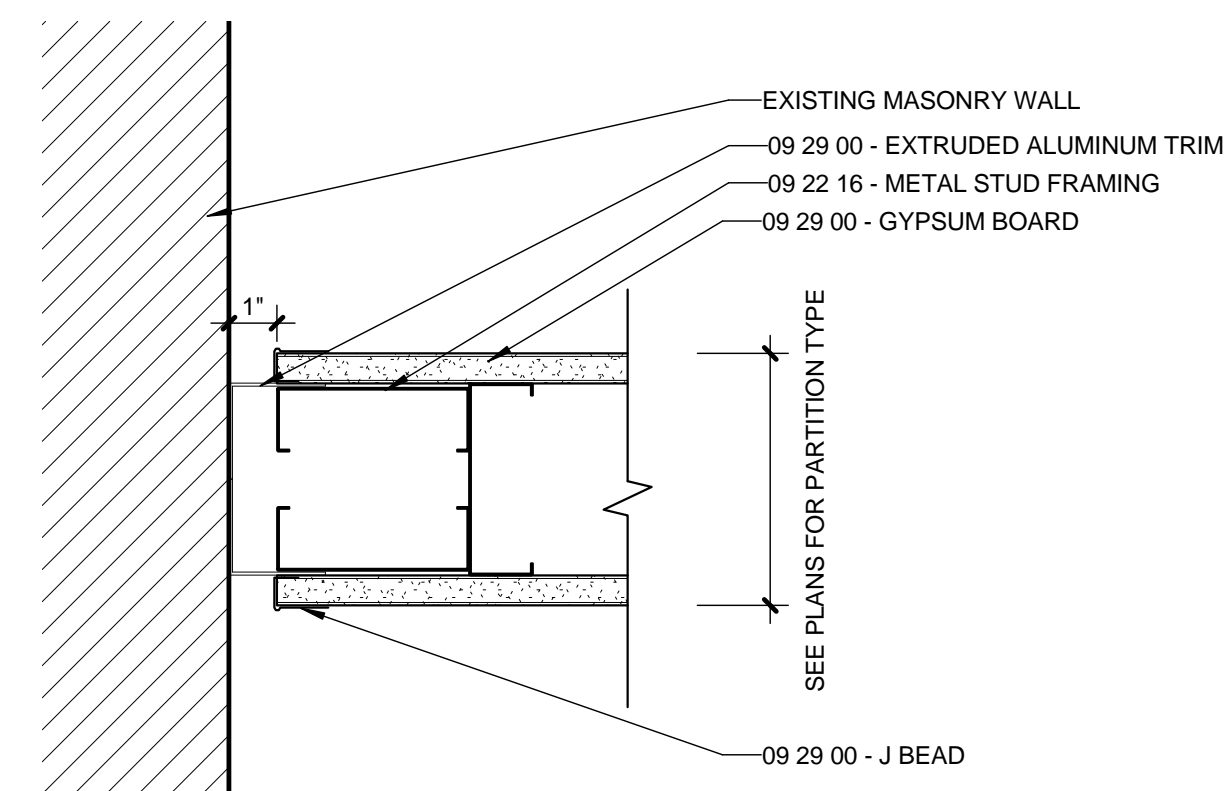
**C6 HORIZONTAL SECTION OF COLUMN SURROUND**  
SCALE: 1 1/2" = 1'-0"



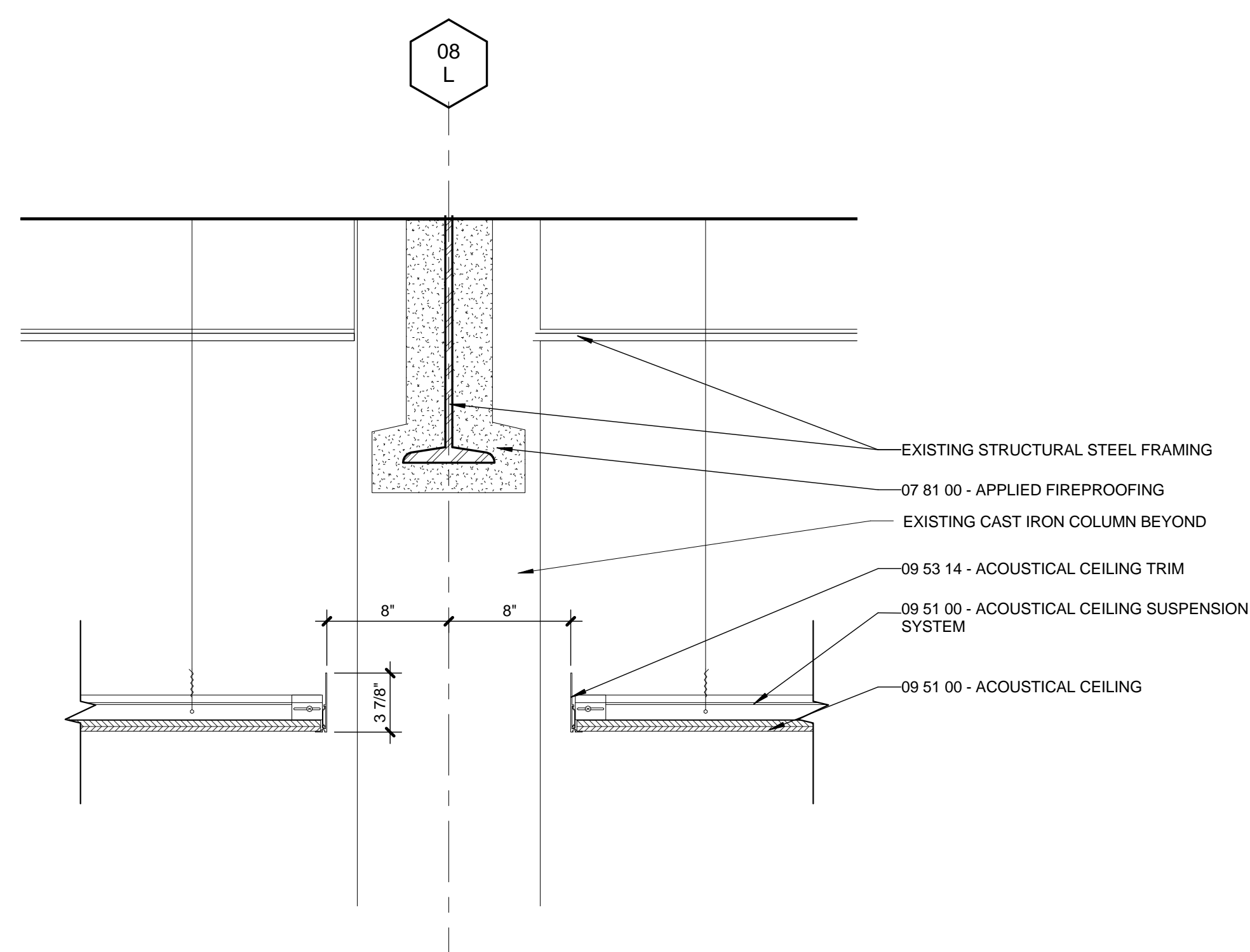
**C5 DETAIL OF CEILING TRANSITION**  
SCALE: 1" = 1'-0"



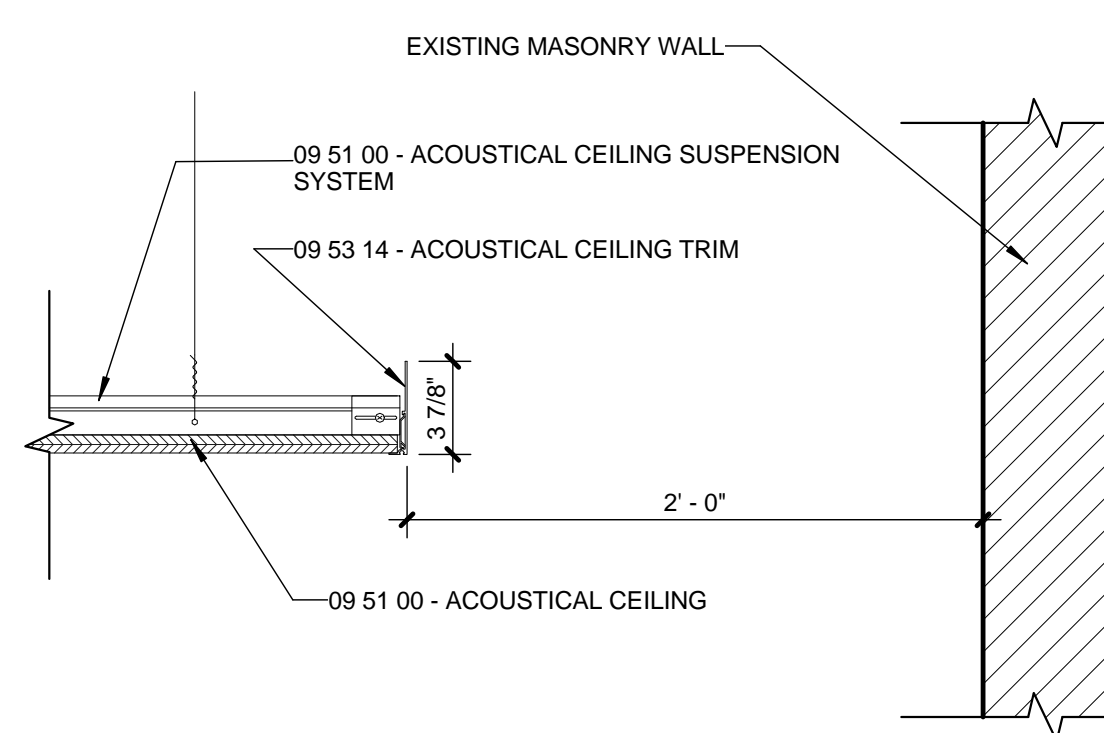
**C3** **DETAIL OF CEILING TRANSITION AT EXTERIOR WALL**  
SCALE: 1" = 1'-0"



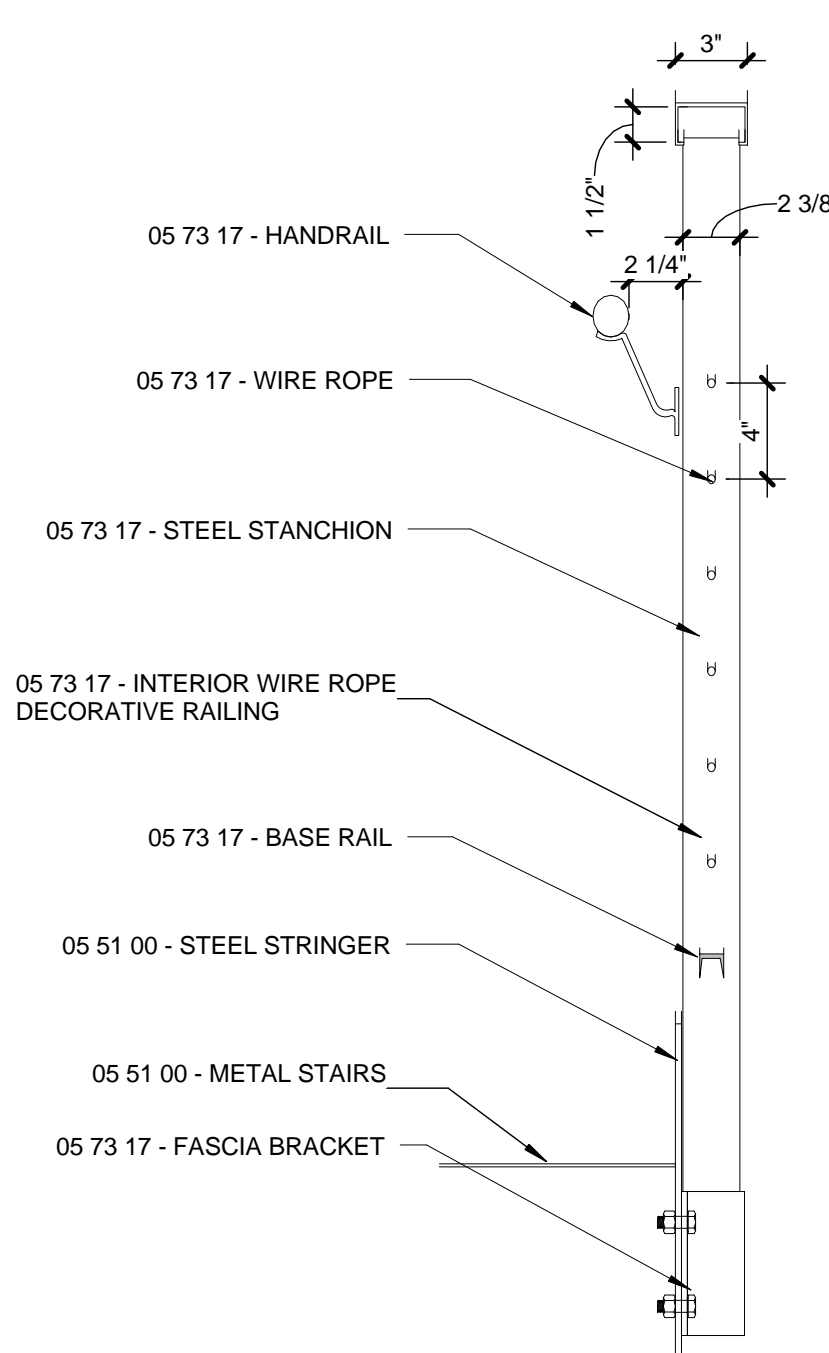
**C1** **DETAIL OF GYP ABUTTING BRICK, TYP.**  
SCALE: 3" = 1'-0"



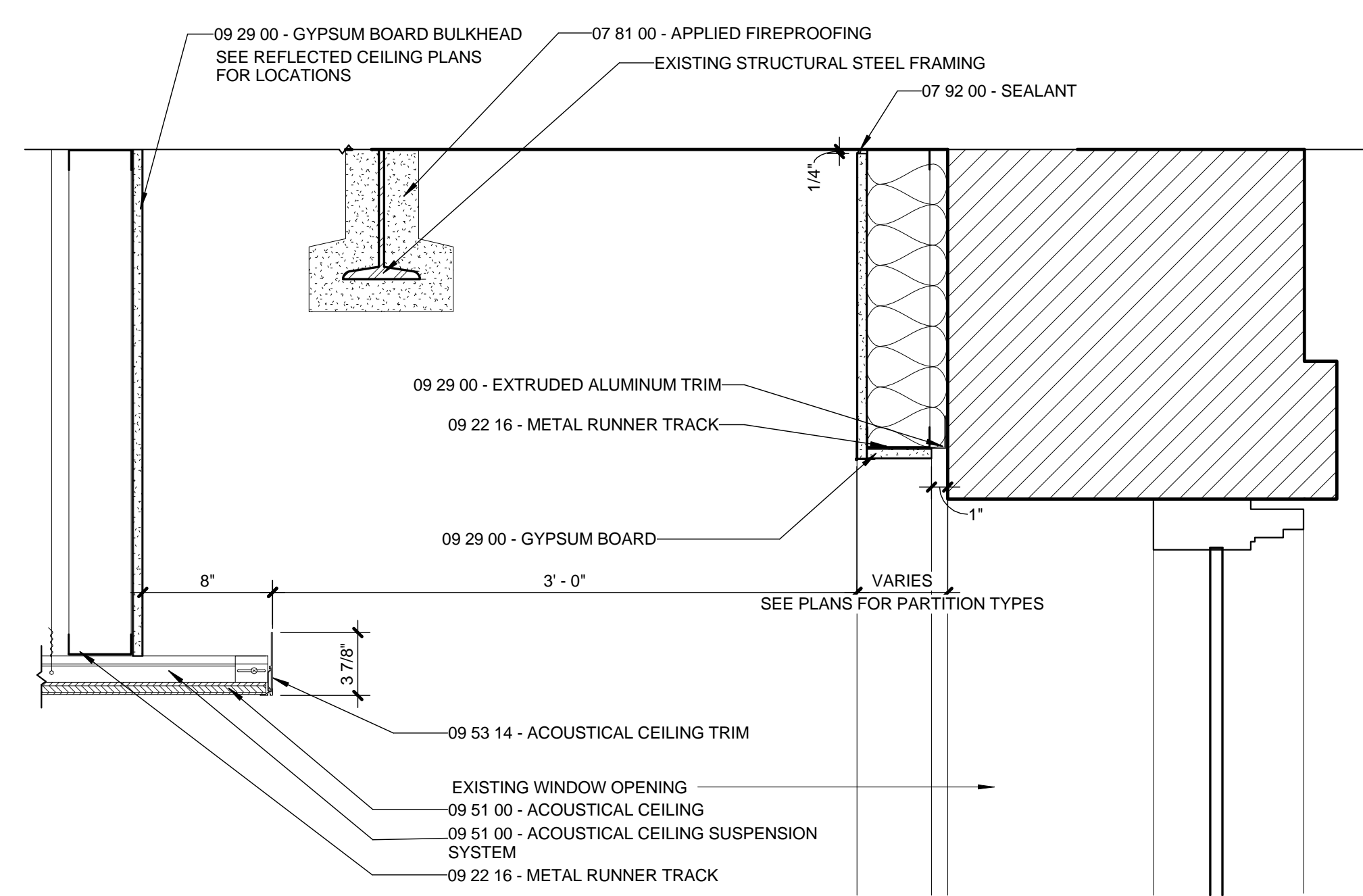
**F6** DETAIL OF CEILING AT IRON COLUMNS, TYP.  
SCALE: 1 1/2" = 1'-0"



**F4** TYPICAL DETAIL OF CEILING AT BRICK WALL  
SCALE: 1 1/2" = 1'-0"



**F3** SECTION OF RAILING  
SCALE: 1 1/2" = 1'-0"



**TYPICAL DETAIL OF CEILING AT WALL WITH WINDOW FL.**  
**1-4 EXCEPT RM 2P106 & 3P104**  
**F2** SCALE: 1 1/2" = 1'-0"

[illegible]

CONSULTANTS:


<p>DESMAN ASSOCIATES / PARKING</p> <p>CODE CONSULTANTS, INC / CODE CONSULTANT</p> <p>THE SEXTANT GROUP / AV &amp; ACOUSTICAL</p> <p>HAMMER DESIGN ASSOCIATES / FOOD SERVICE</p> <p>PYBURN &amp; ODOM / ABATEMENT</p> <p>TATA &amp; HOWARD / TANK CONSULTANT</p> <p>I.S.C. GROUP, INC / IRRIGATION</p> <p>DAN EUSER WATER ARCHITECTURE, INC / WATER FEATURE</p>
--



ARCHITECT/ENGINEERS:

studio **NOVA**

SCHRENK & PETERSON CONSULTING ENGINEERS / CIVIL  
KORDA/NEMETH ENGINEERING / STRUCTURAL  
BR+A CONSULTING ENGINEERS / MECH & ELEC  
ARCHITECTURAL ENGINEERING / PLUMBING  
SCALES ASSOCIATES / FIRE PROTECTION  
COMMUNICATIONS DESIGN GROUP / LOW VOLTAGE

DRAWING TITLE BLDG 8 DIXIE INTERIOR DETAILS		PROJECT TITLE SLVCHS REPLACEMENT MEDICAL CENTER PROJECT		PROJECT NUMBER 629-HS2-401		BUILDING NUMBER 8	
APPROVED: PROJECT DIRECTOR  <i>Yaddi Sanders</i>		LOCATION NEW ORLEANS, LOUISIANA		DOCUMENT SET PACKAGE WP_9B		DRAWING NUMBER  8A1550	
		DATE July 16, 2012	CHECKED CD	DRAWN DL	<div>  Department of Veterans Affairs </div>		

CONSTRUCTION DOCUMENTS 1  
FULLY SPRINKLERED

OFFICE OF  
CONSTRUCTION  
AND FACILITIES  
MANAGEMENT

