

ONE INCH = FORTY FEET (1" = 40')

THREE INCHES = ONE FOOT

ONE AND ONE HALF INCHES = ONE FOOT

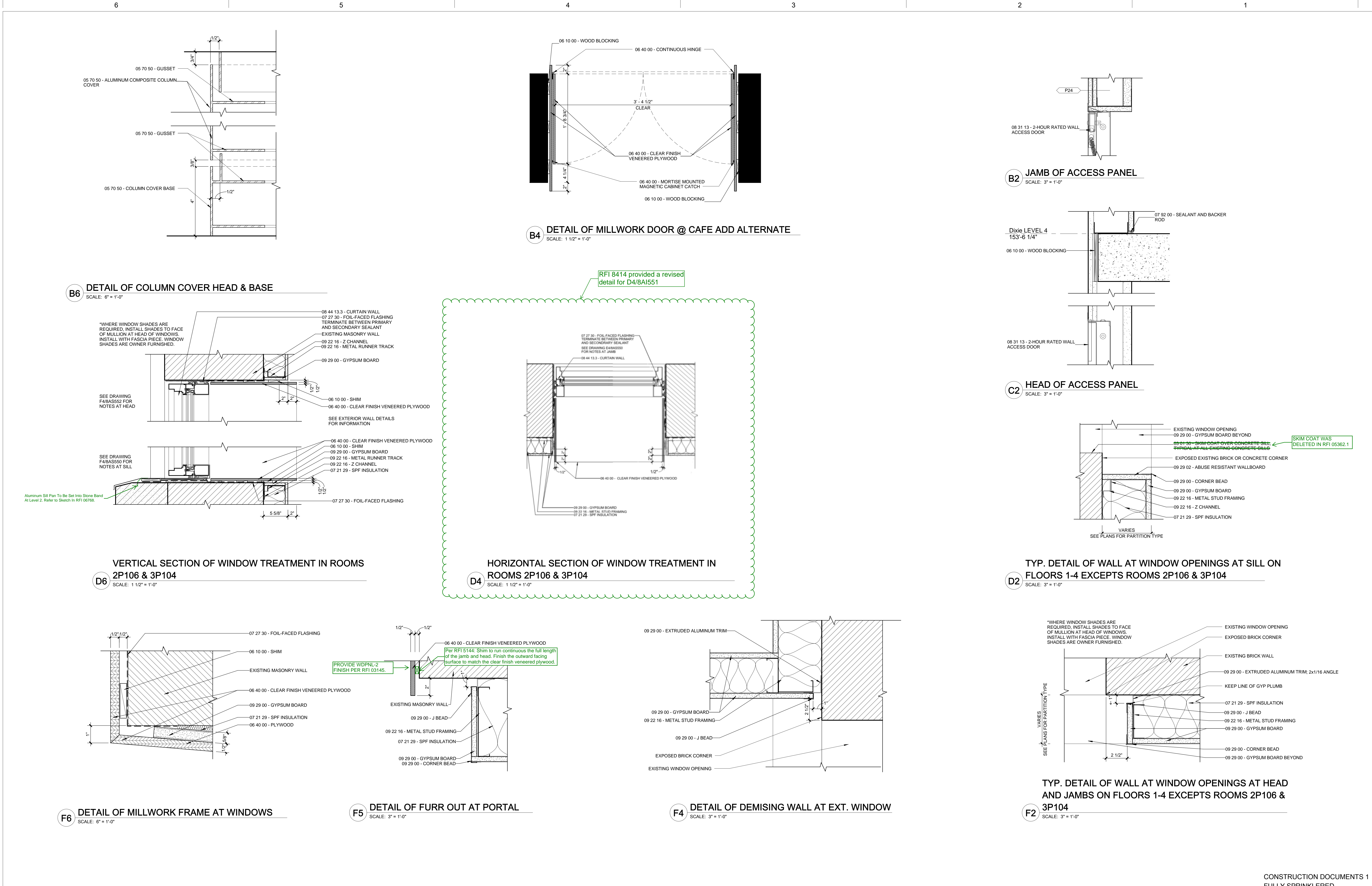
THREE QUARTERS INCH = ONE FOOT

ONE HALF INCH = ONE FOOT

ONE QUARTER INCH = ONE FOOT

ONE EIGHT INCH = ONE FOOT

ONE SIXTEENTH INCH = ONE FOOT



REVISIONS:		DATE
CONSULTANTS:		
DESMAN ASSOCIATES / PARKING		
CODE CONSULTANTS, INC / CODE CONSULTANT		
THE SEXTANT GROUP / AV & ACOUSTICAL		
HAMMER DESIGN ASSOCIATES / FOOD SERVICE		
PYBURN & ODOM / ABATEMENT		
TATA & HOWARD / TANK CONSULTANT		
I.S.C. GROUP, INC / IRRIGATION		
DAN EUSER WATER ARCHITECTURE, INC / WATER FEATURE		
ARCHITECT/ENGINEERS:		
studio NOVA		
SCHRENK & PETERSON CONSULTING ENGINEERS / CIVIL		
KORDA/NEMETH ENGINEERING / STRUCTURAL		
BR+A CONSULTING ENGINEERS / MECH & ELEC		
ARCHITECTURAL ENGINEERING / PLUMBING		
SCALES ASSOCIATES / FIRE PROTECTION		
COMMUNICATIONS DESIGN GROUP / LOW VOLTAGE		
DRAWING TITLE		BLDG 8 DIXIE INTERIOR DETAILS
PROJECT TITLE		SLVHCS REPLACEMENT MEDICAL CENTER PROJECT
PROJECT NUMBER		629-HS2-401
BUILDING NUMBER		8
DOCUMENT SET PACKAGE		WP_9B
APPROVED: PROJECT DIRECTOR		<i>John J. Sanchez</i>
LOCATION		NEW ORLEANS, LOUISIANA
DATE		July 16, 2012
CHECKED		CD
DRAWN		DL
DRAWING NUMBER		8AI551
OFFICE OF CONSTRUCTION AND FACILITIES MANAGEMENT		
Department of Veterans Affairs		