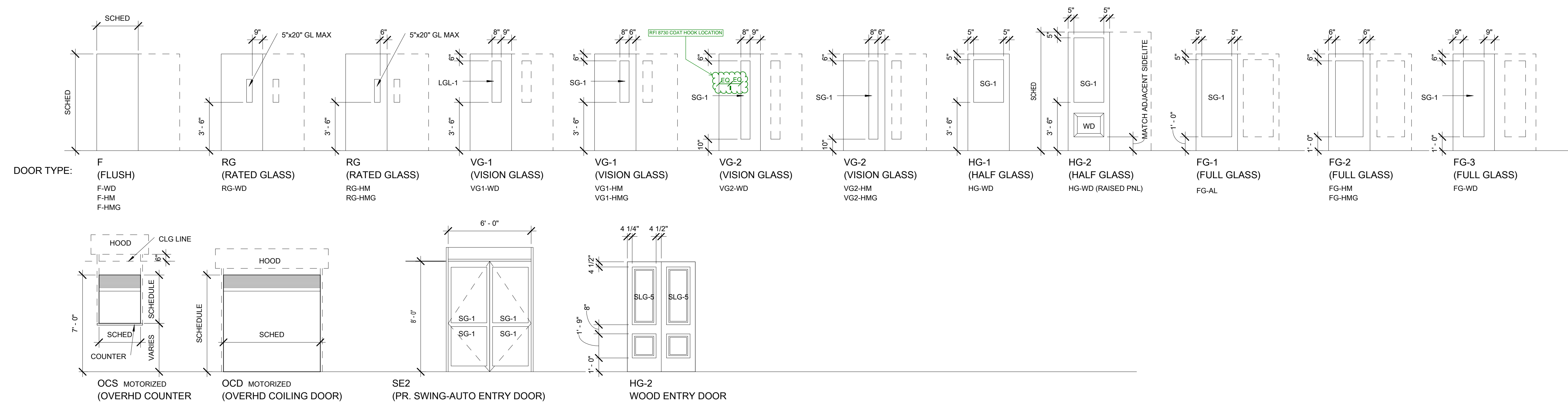
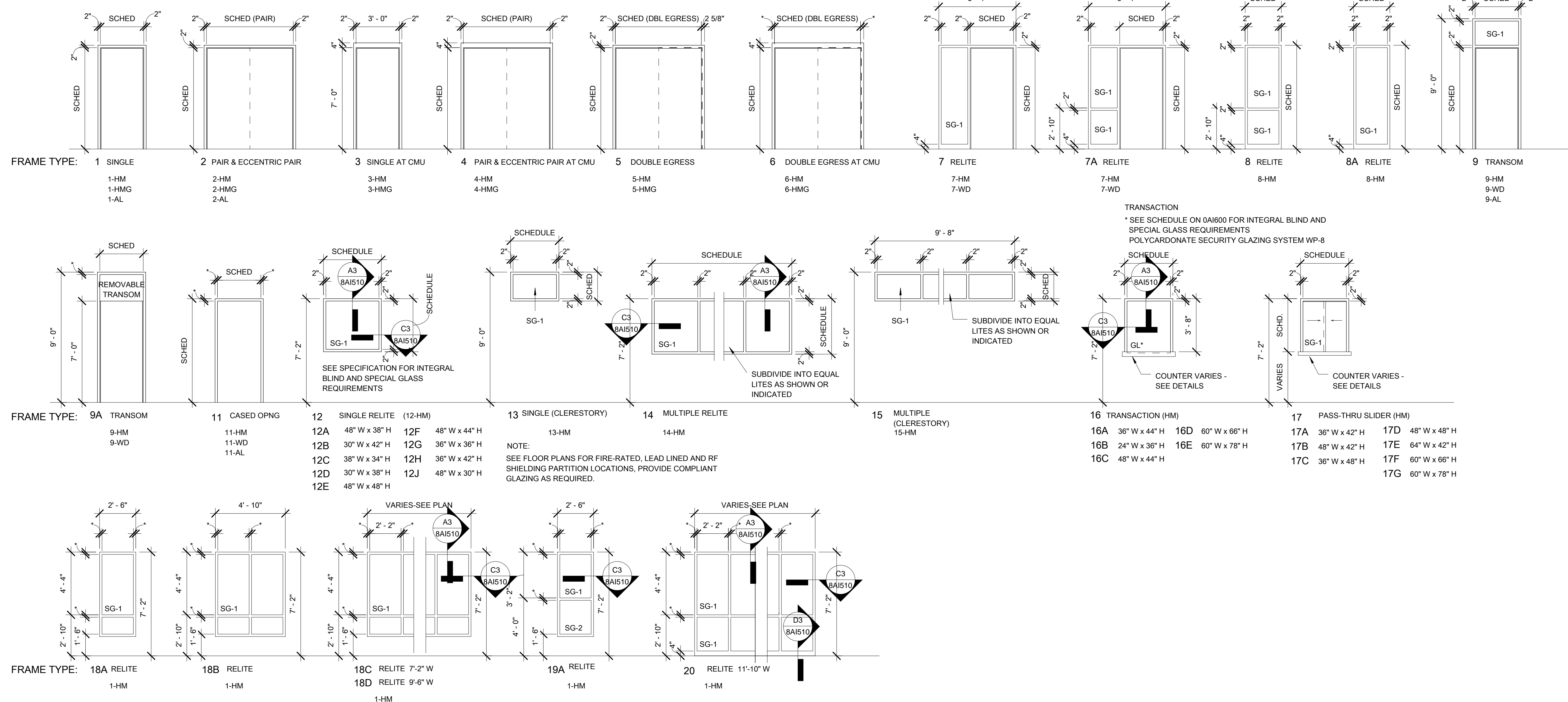


DOOR TYPES



FRAME TYPES

SEE NOTES FOR FACE FRAME DIMENSIONS W/ASTERISK



DOOR SCHEDULE LEGEND

GENERAL SCHEDULE INFORMATION

- A. STANDARD DOOR UNDERCUT 1/2" ABOVE FINISH FLOOR UNLESS NOTED OR INDICATED OTHERWISE.
- B. MAXIMUM UNDERCUT AT RATED DOORS IS 3/4" AFF.
- C. STANDARD DOOR THICKNESS IS 1-3/4" UNLESS NOTED OR INDICATED OTHERWISE.
- D. "LEAF" COLUMN REFERS TO TYPE OF DOOR OPERATION AS FOLLOWS:
 - S = SINGLE LEAF (SWING)
 - PR = PAIR (SWING)
 - DA = DOUBLE ACTING (BISWING)
 - D = DUTCH DOOR (SWING)
 - SH = SHUTTER (OVERHEAD)
 - SL = SLIDE
 - RL = RELITE (GLAZED OPENING - NO DOOR)
- E. SEE FRAME TYPE SCHEDULE FOR INDICATION OF WHAT CONSTITUTES THE SCHEDULED WIDTH AND HEIGHT OF OPENING. SEE DWG 0A1600 FOR DOOR AND FRAME TYPES.

SCHEDULE ABBREVIATIONS

- AL = ALUMINUM
- D = DUTCH (DOOR)
- DE = DOUBLE EGRESS
- EPR = ECCENTRIC PAIR (UNEQUAL LEAFS)
- GSTL = GALVANIZED STEEL
- HDW = HARDWARE GROUP
- HM = HOLLOW METAL
- INT = INTEGRAL (FRAME/PACKAGED ASSEMBLY)
- FR-1 = FIRE RESISTANT GLAS
- SG-1 = LAMINATED GLASS (CLEAR VISION)
- SG-2 = LAMINATED GLASS (FROSTED)
- SG-3 = LAMINATED GLASS (with Red Inner Film as selected by Architect from mfr. standard)
- (NA) = NOT APPLICABLE
- OCS = OVERHEAD (SHUTTER)
- OHG = OVERHEAD GRILLE
- PR = PAIR (EQUAL LEAFS ASSUMED)
- S = SINGLE LEAF (DOOR)
- S/BGL = SECURITY-BALLISTIC GLAZING (SEE PLANS)
- SL = SLIDING (DOOR)
- WD = WOOD

SCHEDULE NOTES

- R1: MAGNETIC HOLD-OPEN
- R2: HANDICAP ASSIST AUTO-OPERATOR
- R3: ACOUSTIC DOOR W/ ACOUSTIC STOPS (AND ACOUSTIC ASTRAGAL AT PAIRS)
- R4: CARD / PROXIMITY READER OPERATED (CENTRAL SYSTEM)
- R5: ELECTRONIC KEYPAD LOCK
- R6: MANUAL KEYPAD LOCK
- R7: DOOR UNDERCUT 1"
- R8: 1-3/8" DOOR THICKNESS
- R9: CASED OPENING
- R10: GALVANIZED FRAME
- R11: GALVANIZED DOOR
- R12: THERMAL INSULATED DOOR
- R13: CONTACT SWITCH WIRED TO SECURITY
- R14: FOLDING FIRE DOOR
- R15: FOLDING ACOUSTICAL PARTITION
- R16: 15-MINUTE FORCED ENTRY DOOR
- R17: UL LEVEL 3 BALLISTIC RESISTANT
- R18: LEAD-LINED
- R19: MAGNETIC SHIELDING-RF SHIELDING
- R20: DOOR HEAD PRESSURE SENSOR
- R21: TOP OF DOOR SLOPED 30-DEGREES
- R22: SMOKE SEAL
- R23: WINDOW FILM
- R24: FLUSH-MOUNT DOOR-HANDLE PROTECTOR W/ REVERSE FLANGE
- R25: LAMINATED GLASS WITH RED INNER FILM AS SELECTED BY ARCHITECT FROM MANUFACTURERS STANDARD

GENERAL NOTES-DOORS

- 1. FRAME: FRAME EXTENSIONS ADJUSTING TO WALL DEPTH ARE TYPICAL - REFER TO DOOR DETAILS. CONTRACTOR TO COORDINATE DOOR BUCK WIDTH WITH SPECIFIED WALL TYPE.
- 2. DIMENSIONS: DIMENSIONS ARE NOMINAL - MANUFACTURER PROVIDING THE DOORS TO DETERMINE THE ROUGH OPENINGS EXCEPT THE OPENINGS IN CONCRETE WALLS THAT HAVE BEEN ALREADY SPECIFIED.
- 3. HARDWARE: FOR HARDWARE GROUP SPECIFICATIONS REFER TO THE PROJECT MANUAL UNDER HARDWARE SPECS.
- 4. ELECTRICAL DEVICES SUCH AS MAG. LOCKS, CARD READERS AND ALARM SYSTEMS BEING PART OF THE DOOR FUNCTION ARE INCLUDED AS PART OF THE ELECTRICAL PLANS AND THE HARDWARE GROUPS.
- 5. GLAZING: GLAZING AS NOTED ON DOOR ELEVATIONS. SEE SPECIFICATIONS FOR SAFETY, SECURITY GLAZING LOCATION REQUIREMENTS.
- 6. FINISH: SEE FINISH SCHEDULE FOR DOOR, FRAME, AND TRIM FINISH.
- 7. COORDINATE DOORS & GATES OUTSIDE BUILDING WITH SITE PLAN.

GENERAL NOTES-RELITES


- 1. GLAZING: SEE FLOOR PLANS FOR FIRE-RATED PARTITION LOCATIONS. PROVIDE COMPLIANT GLAZING AS REQUIRED. GLASS TYPE FR-1"

CONSULTANTS:	
DESMAN ASSOCIATES / PARKING	
CODE CONSULTANTS, INC. / CODE CONSULTANT	
THE SEXTANT GROUP / AV & ACOUSTICAL	
HAMMER DESIGN ASSOCIATES / FOOD SERVICE	
PYBURN & ODOM / ABATEMENT	
TATA & HOWARD / TANK CONSULTANT	
I.S.C. GROUP, INC. / IRRIGATION	
DAN EUSER WATER ARCHITECTURE, INC. / WATER FEATURE	
REVISIONS:	DATE
3 Addendum #3 - Post-Bid	7/3/2013



ARCHITECT/ENGINEERS:

studio **NOVA**
SCHRENK & PETERSON CONSULTING ENGINEERS / CIVIL
KORDA/NEMETH ENGINEERING / STRUCTURAL
BR+A CONSULTING ENGINEERS / MECH. ELECT. PLUMBING, LOW VOLTAGE
ARCHITECTURAL ENGINEERING / PLUMBING
SCALES ASSOCIATES / FIRE PROTECTION

DRAWING TITLE DOOR & FRAME TYPES		PROJECT TITLE SLVHCS REPLACEMENT MEDICAL CENTER PROJECT		PROJECT NUMBER 100342.00	BUILDING NUMBER 08
APPROVED: PROJECT DIRECTOR		LOCATION NEW ORLEANS, LOUISIANA		DOCUMENT SET PACKAGE WP_09B	
				DRAWING NUMBER 8A1600	
DATE July 16, 2012		CHECKED GK	DRAWN GK	 Department of Veterans Affairs	