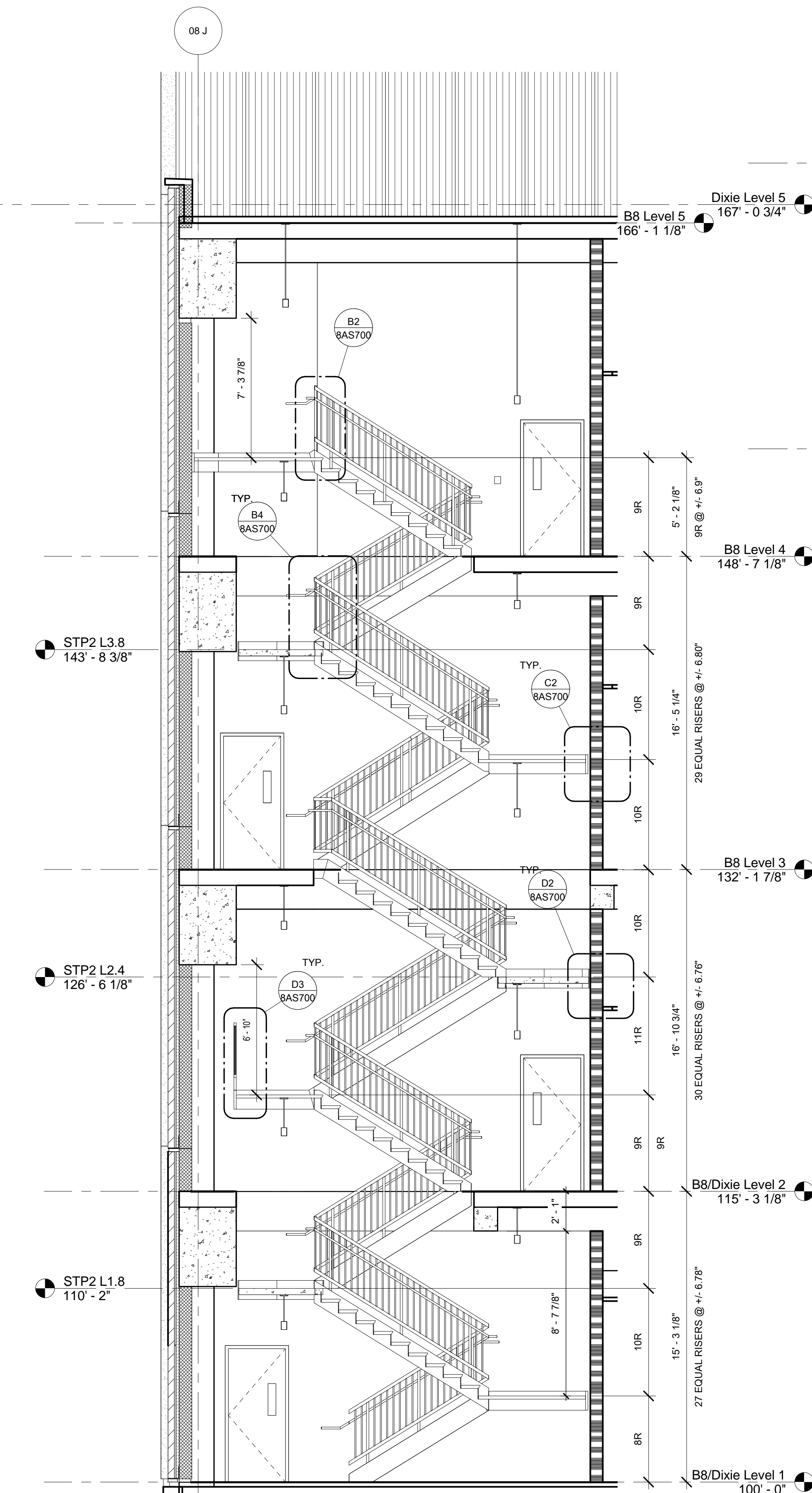
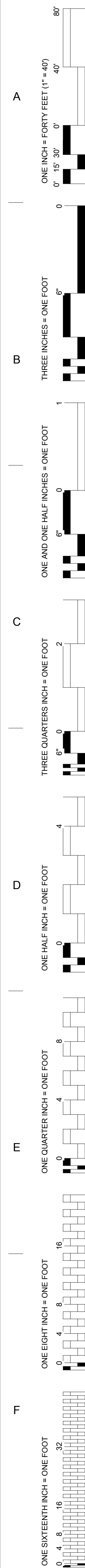
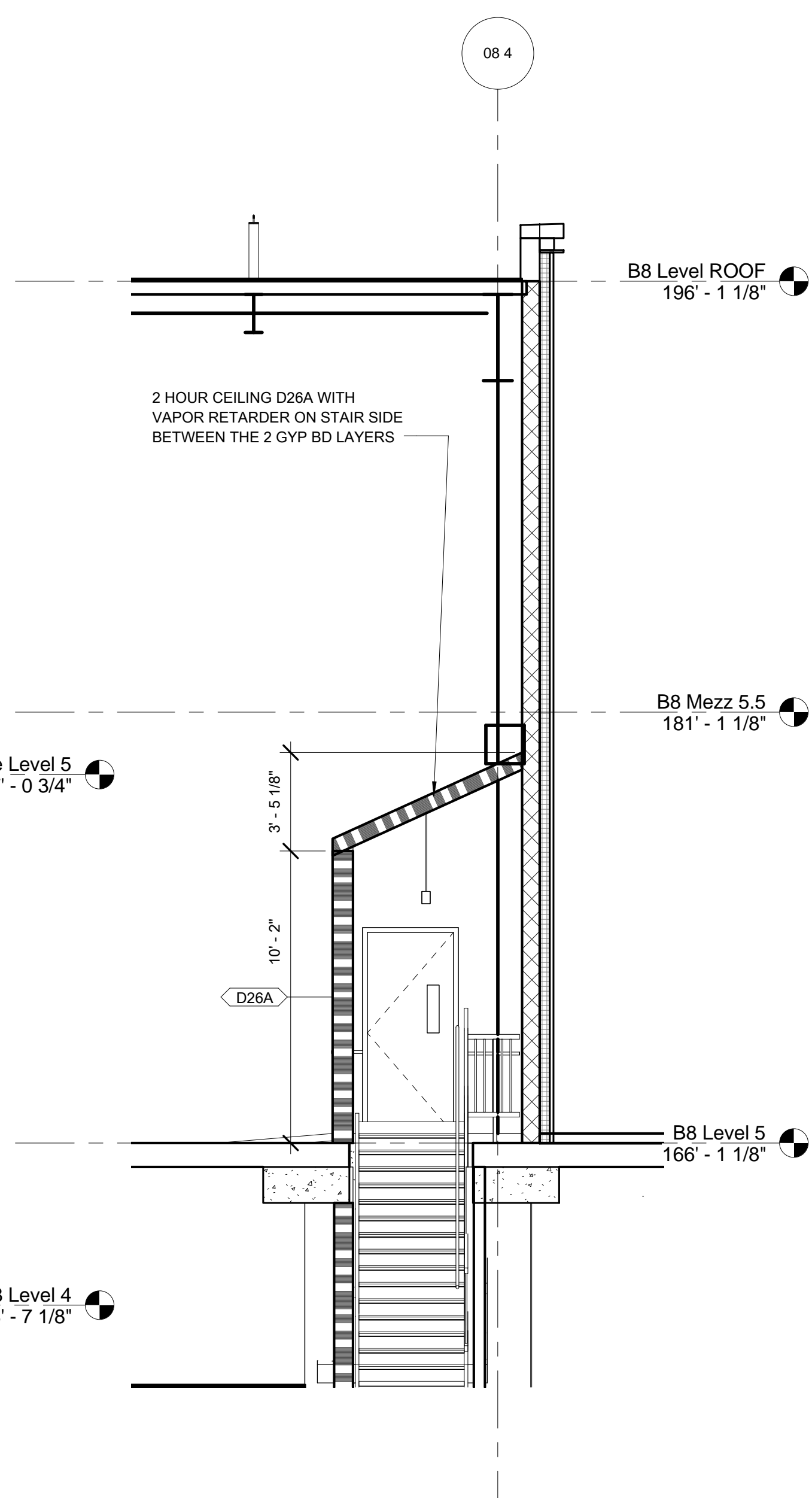


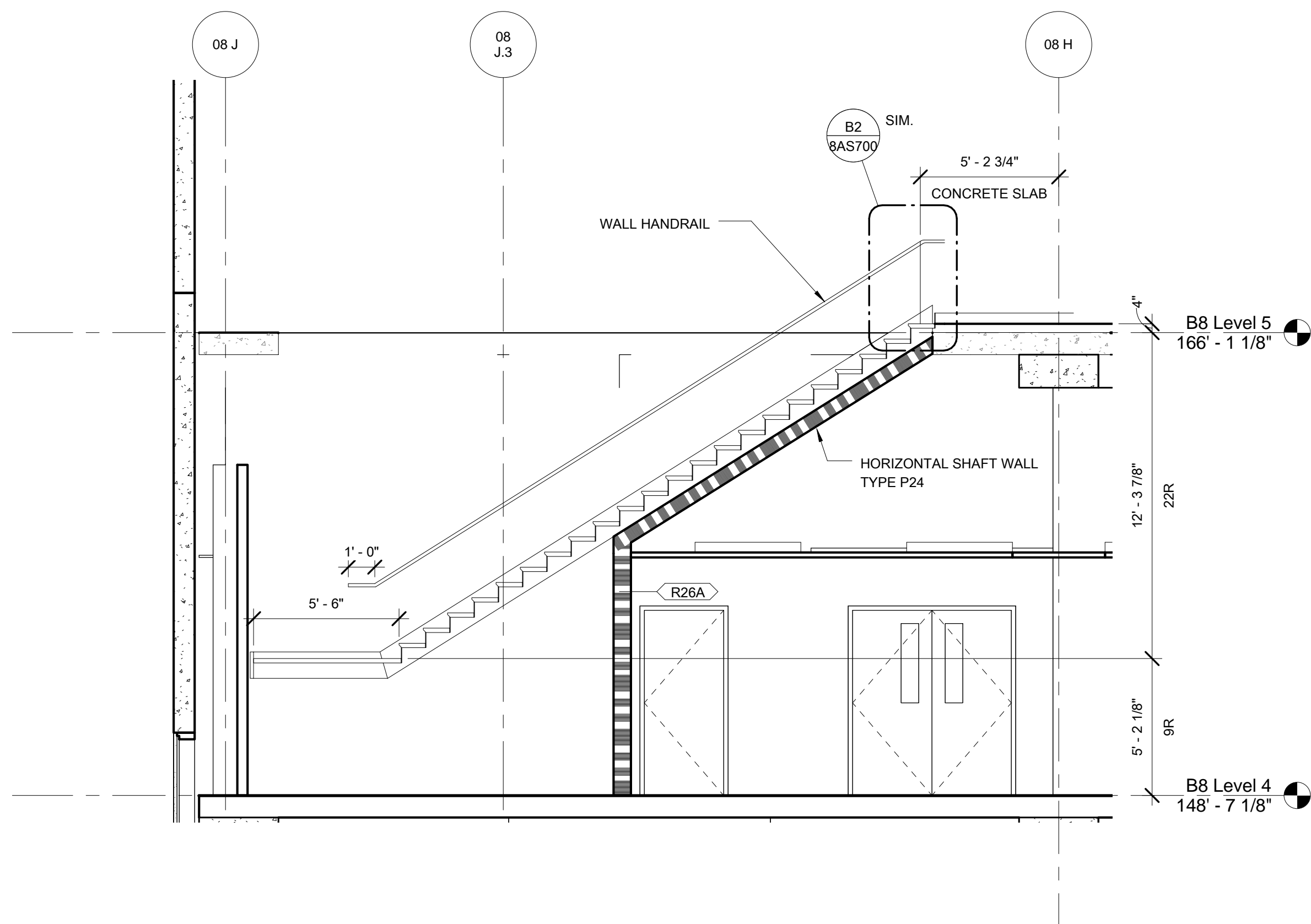
RFI 06217 ALL SHEET NOTES ON
THE ENLARGED STAIR PLANS
ARE TO REFERENCE THE SHEET
NOTES ON 8AS700



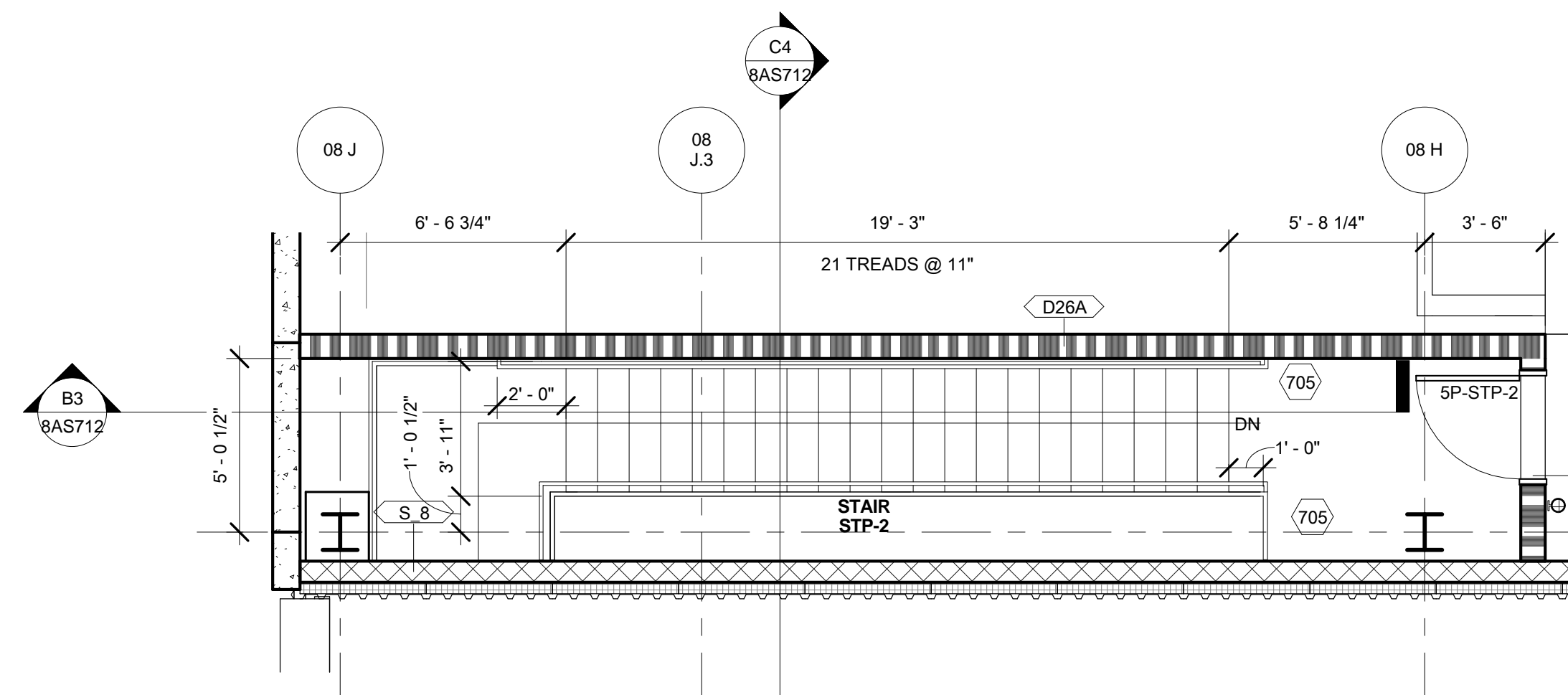
F6 STAIR STP-2, E-W SECTION
SCALE: 1/4" = 1'-0"



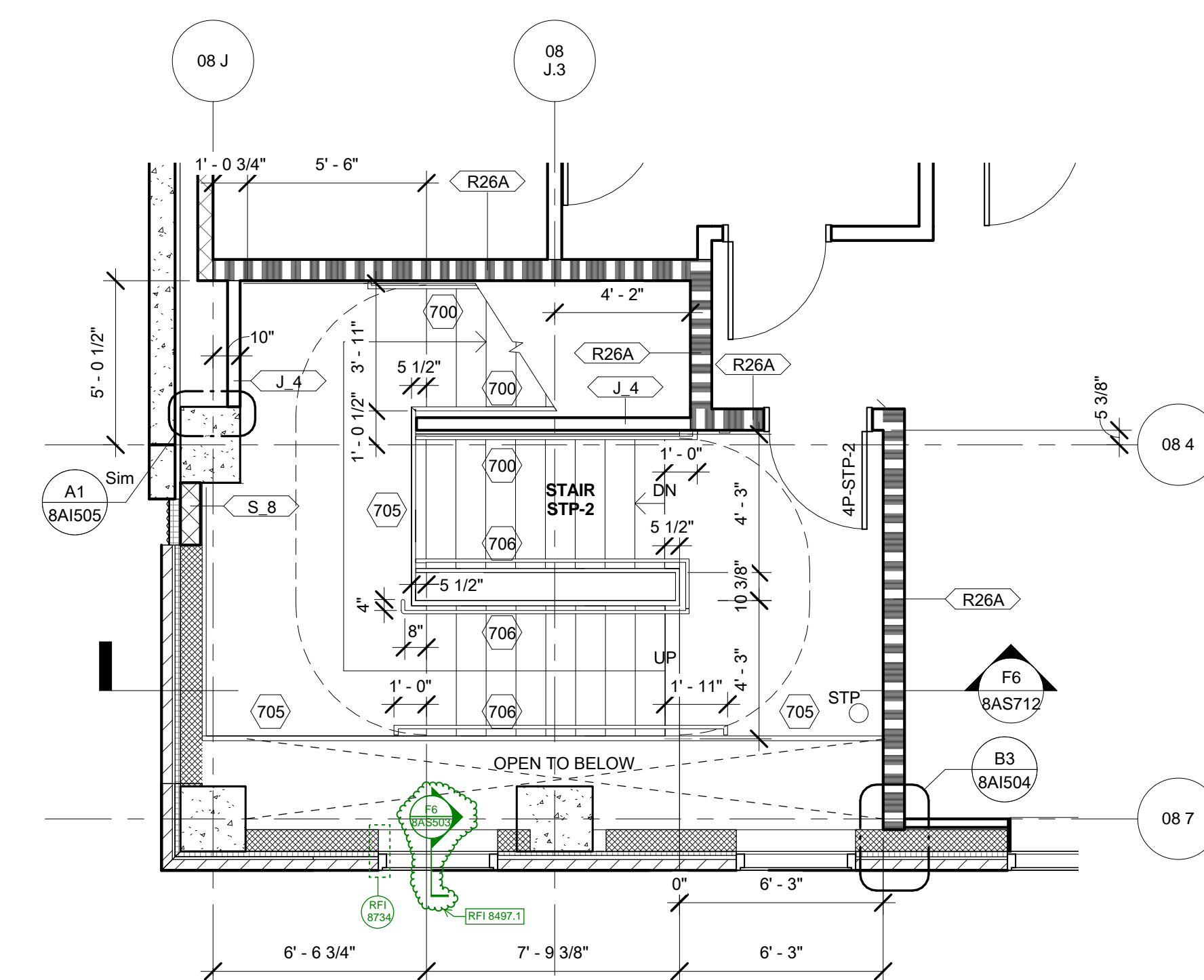
C4 STAIR STP-2 N-S SECTION
SCALE: 1/4" = 1'-0"



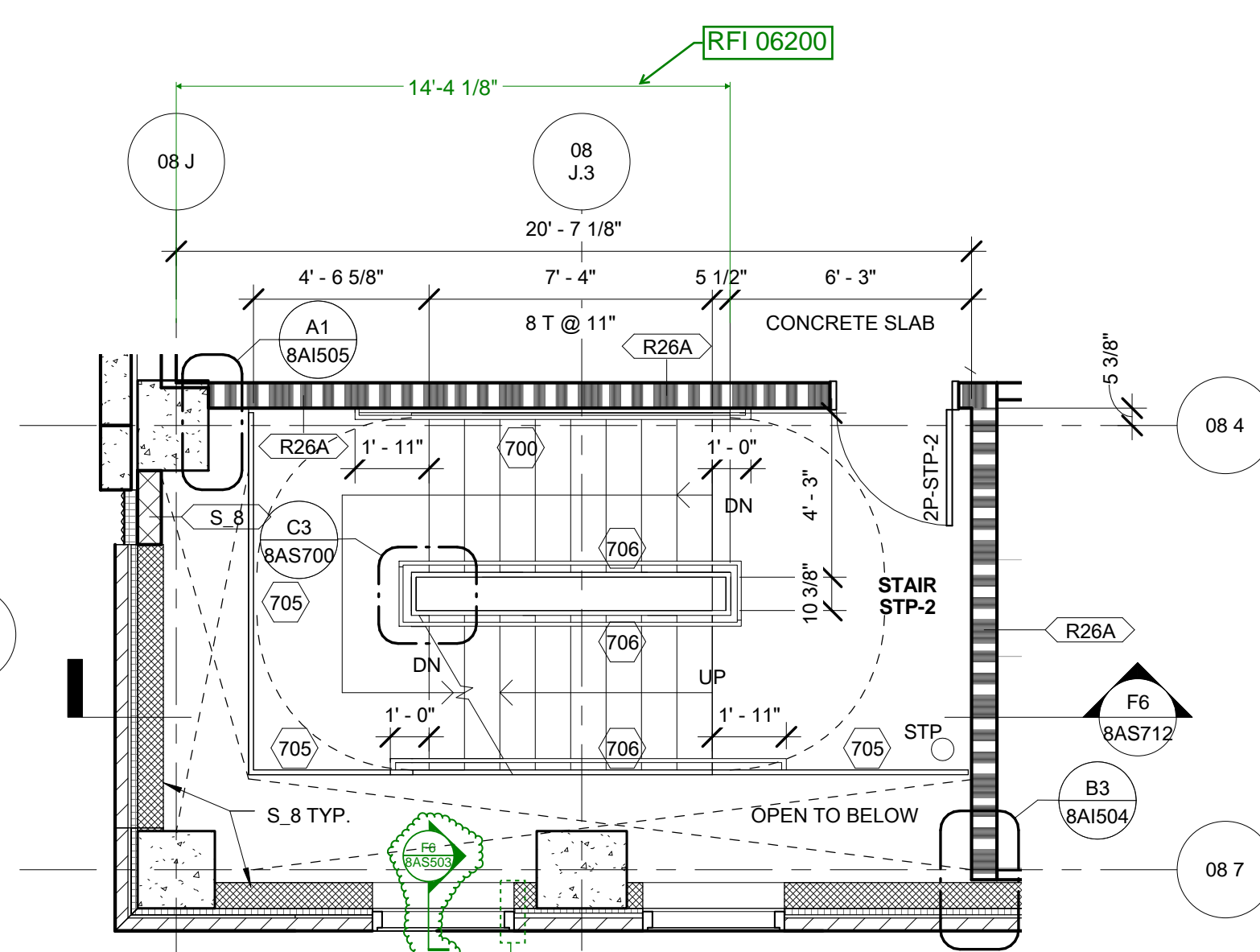
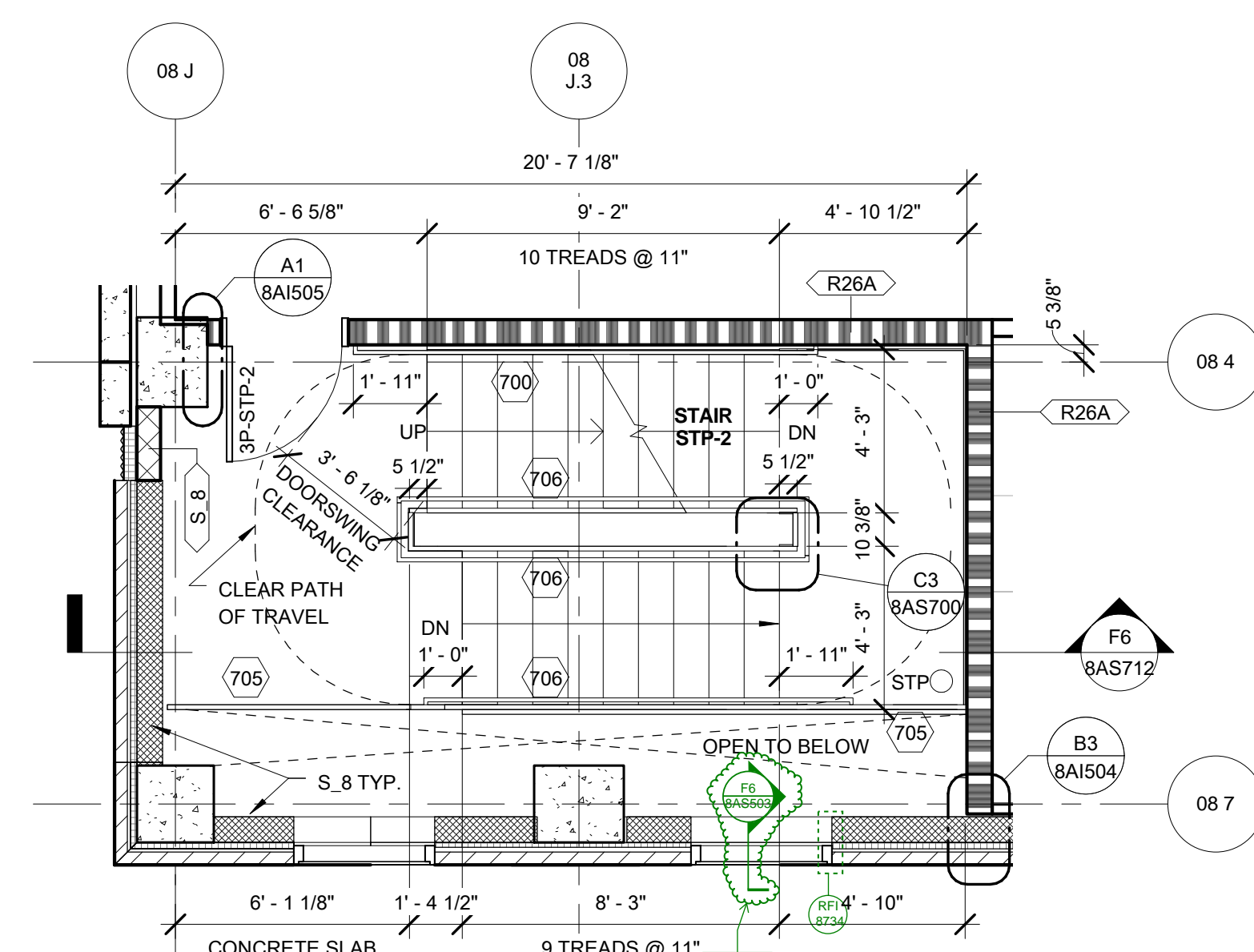
B3 STAIR STP-2 SECTION AT LEVEL 5
SCALE: 1/4" = 1'-0"



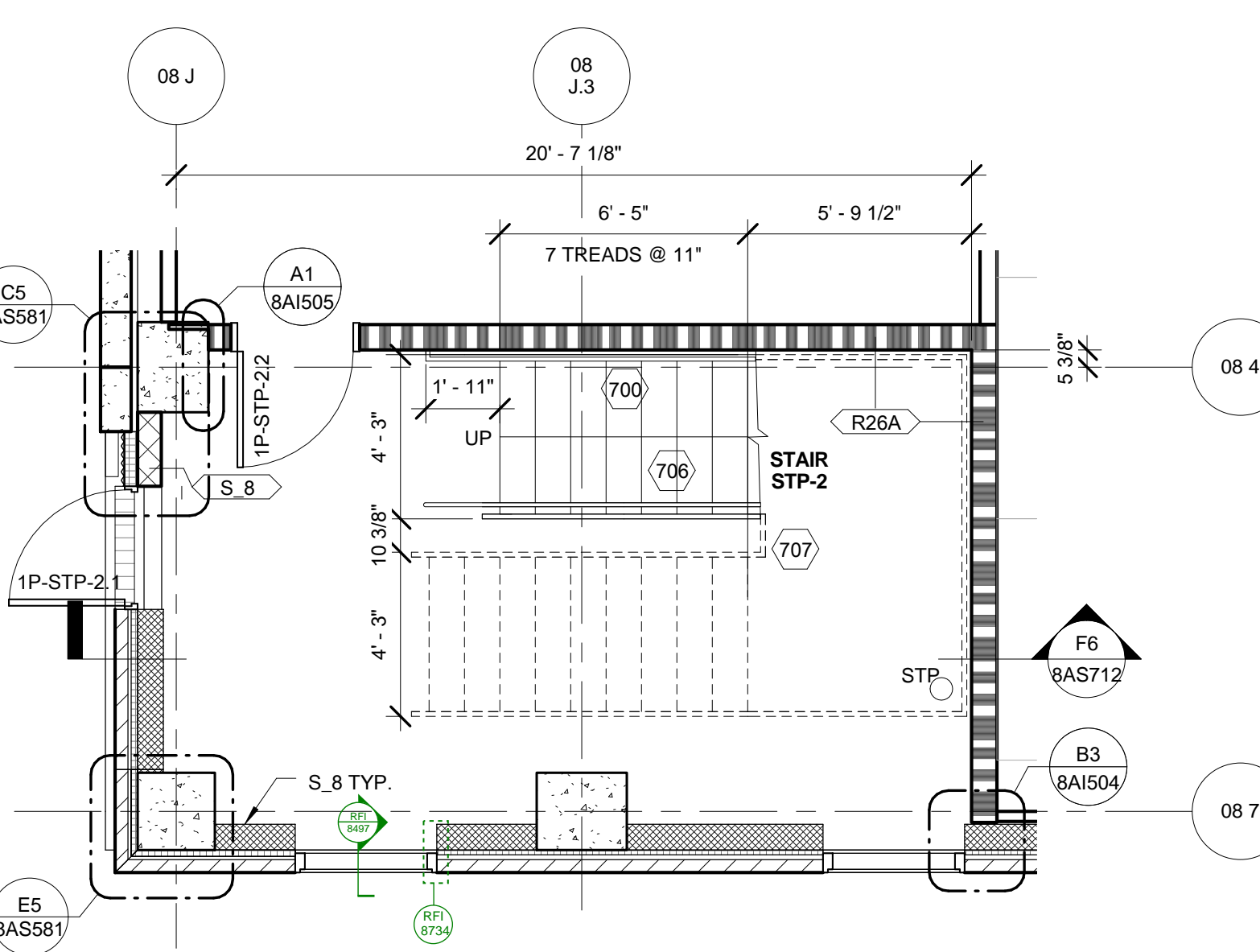
D3 STAIR STP-2 LEVEL 5
SCALE: 1/4" = 1'-0"



F3 STAIR STP-2 LEVEL 4
SCALE: 1/4" = 1'-0"



D1 STAIR STP-2 LEVEL 2
SCALE: 1/4" = 1'-0"



F1 STAIR STP-2 LEVEL 1
SCALE: 1/4" = 1'-0"

[illegible]

ARCHITECT/ENGINEERS:

studio **NOVA** 

SCHRENK & PETERSON CONSULTING ENGINEERS / CIVIL
KORDA/NEMETH ENGINEERING / STRUCTURAL
BR+A CONSULTING ENGINEERS / MECH, ELECT, PLUMBING, LOW VOLTAGE
ARCHITECTURAL ENGINEERING / PLUMBING
SCALES ASSOCIATES / FIRE PROTECTION

DRAWING TITLE

**BLDG 8 STAIR P2 ENLARGED PLANS &
SECTIONS**

APPROVED: PROJECT DIRECTOR

Yadd Jan Luis

PROJECT TITLE	
SLVHCS REPLACEMENT MEDICAL CENTER PROJECT	
LOCATION	
NEW ORLEANS, LOUISIANA	
DATE	CHECKED
1-1-10 00:10	DM

PROJECT NUMBER	BUILDING NUMBER
100342.00	08
DOCUMENT SET PACKAGE	
WP_09B	
DRAWING NUMBER	
8AS712	

OFFICE OF
CONSTRUCTION
AND FACILITIES
MANAGEMENT

