



October 21, 2015

Lenwood O'Neal
Chief, EMS
VAMC Jesse Brown
820 S. Damen Avenue
Chicago, IL 60612

Dear Mr. O'Neal,

Enclosed you will find two drawing packets and information packet for the VAMC Jesse Brown installation of the San-I-Pak 341L with slide, sterilizer, and compactor. These drawings are being submitted for your approval, if they are acceptable "as-is" we ask that you sign each drawing and return one complete set to us. If changes are required, clearly mark the changes, sign and return the drawings for corrections. The second set is for your records.

Also enclosed is a utility checklist form. Please complete the requested information regarding the available hospital utilities, sign it, and return it with the signed drawings.

Information packets ("Install Schedule" and "Site Layout Specs") are included which will assist your facility in preparing for the San-I-Pak installation. These packets have been provided for your benefit and don't need to be signed or returned to us.

As soon as I receive the approved drawings and a completed utility checklist I will notify you of the scheduled ship date for your equipment. Should you have any other questions regarding the upcoming installation, contact Georgina Hall at 209-836-2310 (x109).

For USPS, mail to P.O. Box 1183, Tracy, CA 95378-1183. For UPS, mail to 23535 south Bird Road, Tracy, CA 95304.

Thank you in advance for your attention to this matter.

Sincerely,

A handwritten signature in black ink, appearing to read "Roman Flores".

Roman Flores
Purchasing Agent
San-I-Pak Pacific, Inc.
sippurchasing@sanipak.com
Ph: 209-836-2310 ext. 126
Fax: 209-836-2336

October 21, 2015

Lenwood O'Neal
Chief, EMS
VAMC Jesse Brown
820 S. Damen Avenue
Chicago, IL 60612

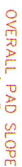
Please review, sign, and return this form and one set of the enclosed installation drawings. **You will be provided with a shipping date confirmation once we receive the signed and approved drawings and a copy of this completed form.** Typical production time for San-I-Pak equipment is 90-120 days from receipt date of final drawing approval and utility info.

- Initial here to acknowledge receipt of the installation information packets. _____
- Will your facility's site be ready for equipment delivery within 90-120 days? (Yes or No)
- Requested delivery date: _____
- Color of new equipment (National Blue) check color: Blue _____ Other _____
- 3-phase voltage desired for San-I-Pak Production (circle): (240V), (480V), (208V) Other: _____
- 120V single-phase (40 amp minimum) is also required. Amperage available (circle one): (40AMP x 1 line), (20AMP x 2 lines), (Other _____) Stage I/II Cold Weather Package has been purchased.
- Door hinges: Left
- What is the Dock Height at your facility: _____
- Confirm Slope if Applicable: _____
- Steam Pressure Available: _____ PSI Water Pressure Available _____ PSI
- Trench drains installed per San-I-Pak drawings: _____
- Waste hauling company name: _____
- Contact person at waste hauler: _____ PH# _____
(Must be a person who knows the understructure and hookups required for hauler to pick up the roll-off container.)
- Two lines are required for systems with Intel-I-Com System (AT&T plug-in type) and/or network connection with internet access.

Form completed by: (name) _____, (title) _____

Phone Number: _____, FAX Number: _____

If you have any questions please call Georgina Hall at 209-836-2310.



64 GAL. CART & MOUNTED CART DUMPER-

CONTROL PANEL WITH PHONE
-LINE HOOK-UP (SEE NOTE 11):
120V 1Ø & 480V 3Ø

$\frac{37'-4''}{18\ 1/2''}$

GRAIN, CONCRETE SLOPE TO DRAIN
AT 1/2 ON CENTER X 1/4 THICK

1/2 x 1/4 ANGLE IRON (TOP)

12"

4" (IN)

1/2"

1/2"

DETAIL A

TYPICAL TRENCH DRAIN CONSTRUCTION
(CUSTOMER FURNISHED)

[illegible]

JESSE BROWN VAMC

ACAD FILE: JESSE1E

[illegible]

THIS IS NOT A VALID DRAWING UNLESS SIGNED BELOW IN THE TITLE BLOCK
NOT FOR CONSTRUCTION UNTIL APPROVED BY CUSTOMER, GROMINA & JOHN

San-i-pak
SIP REP: STEVE HILL

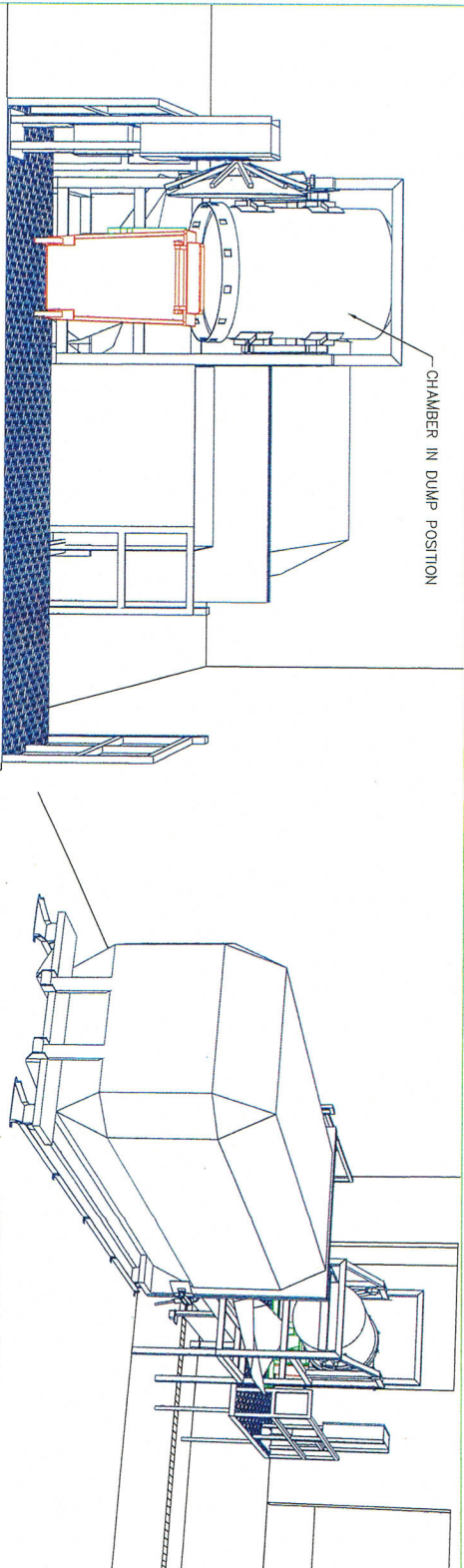
SIP REP:
STEVE HILLIKER

Ok As Is Need Corrections

X _____ (Signature)

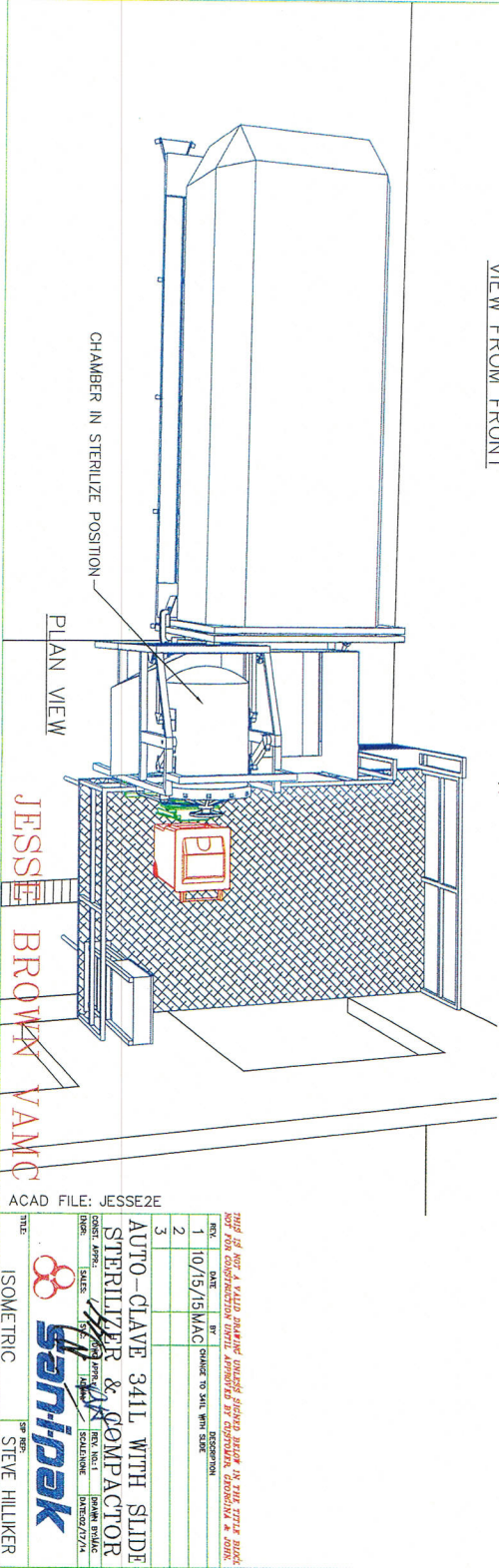
(Printed Name)

(Title)



VIEW FROM FRONT

VIEW FROM REAR



VIEW FROM FRONT

VIEW FROM REAR

JESSE BROWN VAMC

ACAD FILE: JESSE2E

THIS IS NOT A FINAL DRAWING. IT IS A PRELIMINARY DRAWING. IT IS NOT TO BE USED FOR CONSTRUCTION UNTIL APPROVED BY CUSTOMER. OTHERWISE, IT IS VOID.			
REV.	DATE	BY	DESCRIPTION
1	10/15/15	MAC	CHANGED TO SILENT WITH SILENT
2			
3			

AUTO-CLAVE 341L WITH SLIDE
STERILIZER & COMPACTOR

DATE: 10/15/15
SCALE: 1/4" = 1'-0"
DRAWN BY: JESSE BROWN
CHECKED BY: JESSE BROWN
DATE: 10/15/15

ISO-METRIC

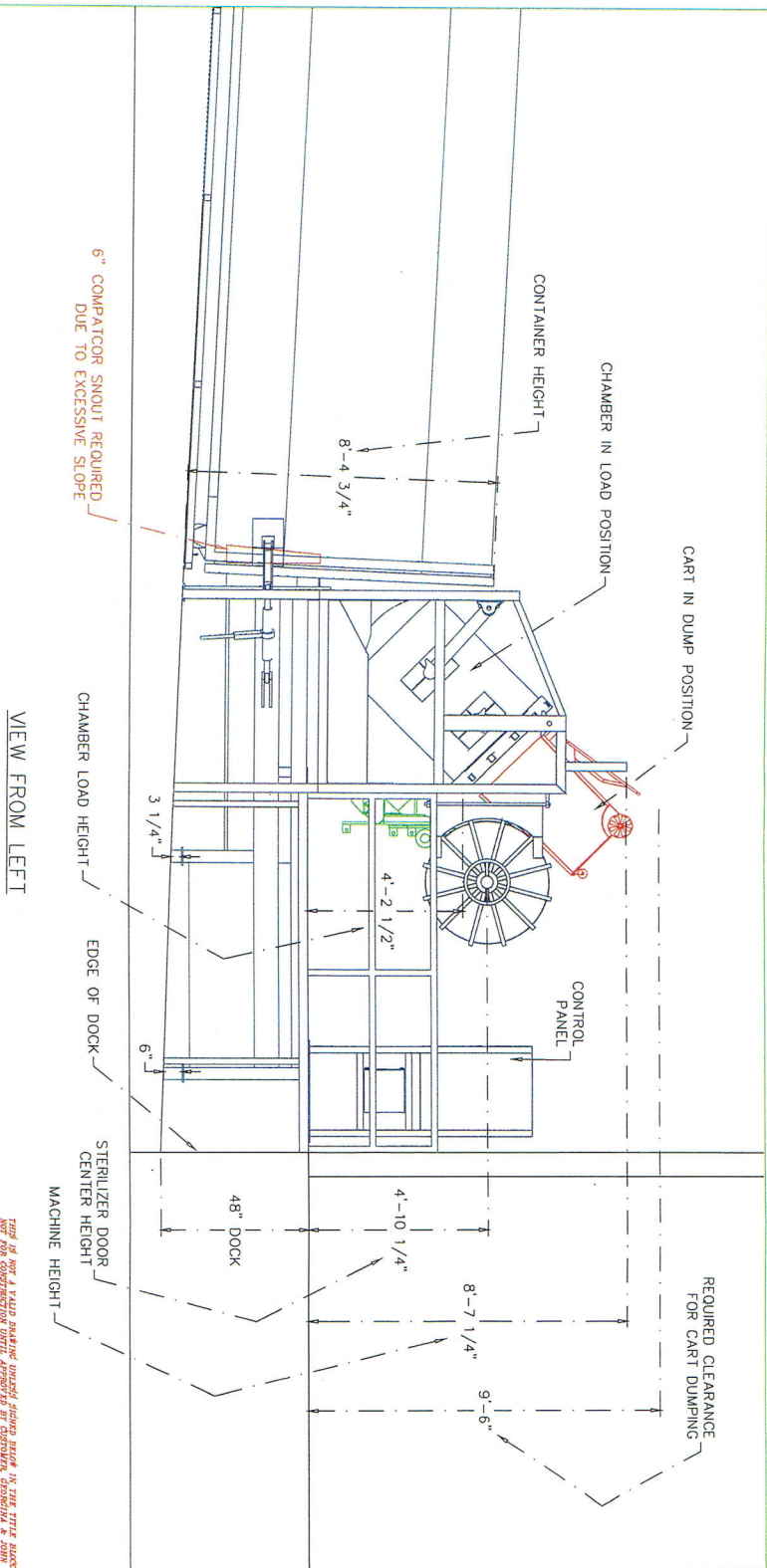
SP. REP. STEVE HILLIKER

Sanipak

Ok As Is Need Corrections

X (Signature)
(Printed Name)
(Title)

ACAD FILE: JESSE3E

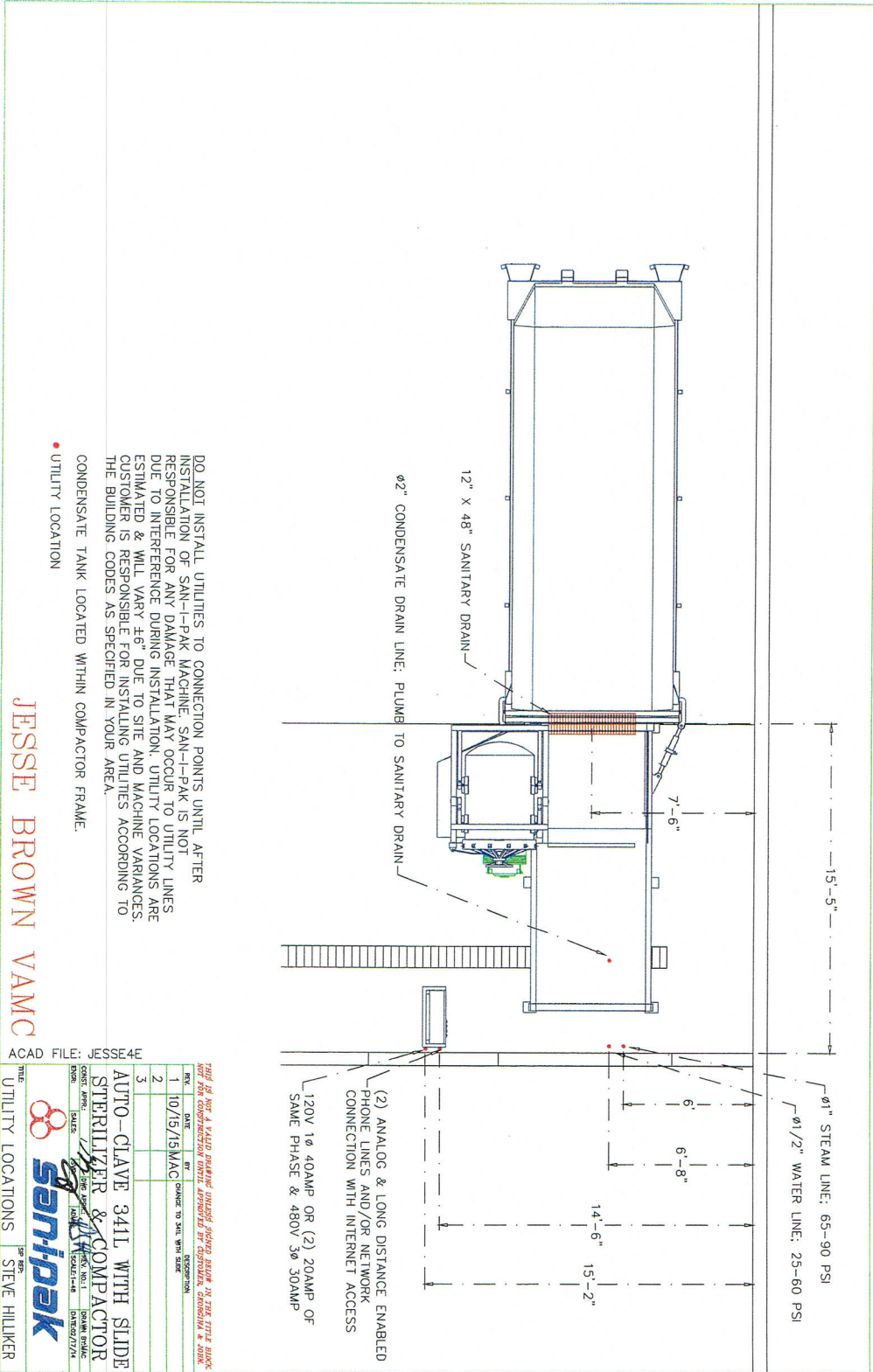
[illegible]

Ok As Is _____ Need Corrections _____

(Signature)

(Printed Name)

(Title)



THIS IS NOT A VALID DRAWING UNLESS SIGNED BY THE DESIGNER AND NOT FOR CONSTRUCTION UNTIL APPROVED BY THE DESIGNER. APPROVED & SIGNED

REV.	DATE	BY	DESCRIPTION
1	10/15/15	MAC	CHANGE TO SILE WITH SILE
2			
3			

AUTO-CLAVE 341L WITH SLIDE
STERILIZER & COMPACTOR

DATE: 10/15/15
SCALE: 1/4" = 1'-0"

DESIGNED BY: JESSE BROWN
CHECKED BY: JESSE BROWN
DATE: 10/15/15
SCALE: 1/4" = 1'-0"

UTILITY LOCATIONS

STEVE HILLER