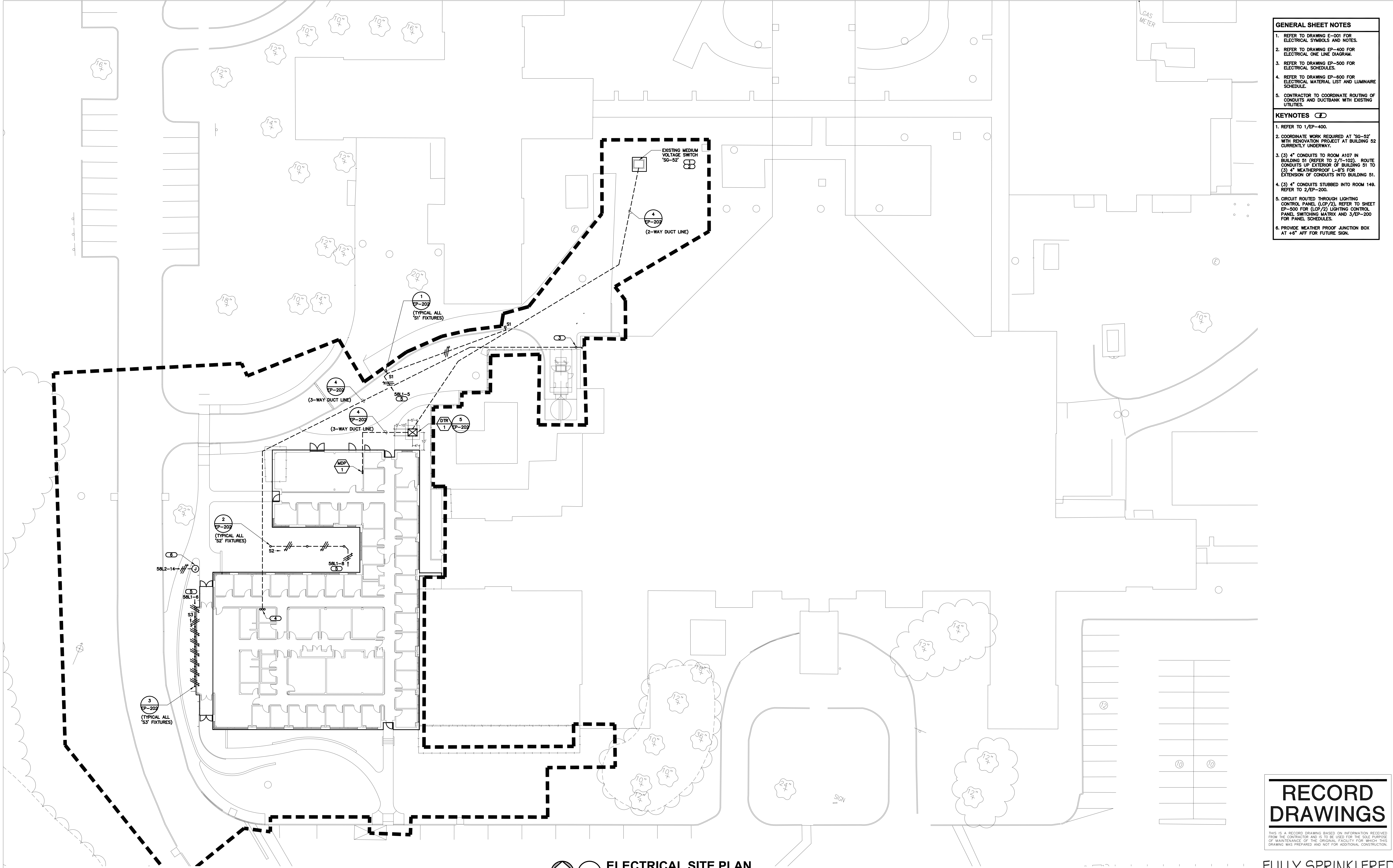


three inches = one foot
one and one half inches = one foot
one inch = one foot
three quarters inch = one foot
one half inch = one foot
three eighths inch = one foot
one quarter inch = one foot
one eighth inch = one foot
one eighth inch = one foot



- GENERAL SHEET NOTES**
- REFER TO DRAWING E-001 FOR ELECTRICAL SYMBOLS AND NOTES.
 - REFER TO DRAWING EP-400 FOR ELECTRICAL ONE LINE DIAGRAM.
 - REFER TO DRAWING EP-500 FOR ELECTRICAL SCHEDULES.
 - REFER TO DRAWING EP-600 FOR ELECTRICAL MATERIAL LIST AND LUMINAIRE SCHEDULE.
 - CONTRACTOR TO COORDINATE ROUTING OF CONDUITS AND DUCTBANK WITH EXISTING UTILITIES.
- KEYNOTES**
- REFER TO 1/EP-400.
 - COORDINATE WORK REQUIRED AT 'SG-52' WITH RENOVATION PROJECT AT BUILDING 52 CURRENTLY UNDERWAY.
 - (3) 4" CONDUITS TO ROOM A107 IN BUILDING 51 (REFER TO 2/T-102). ROUTE CONDUITS UP EXTERIOR OF BUILDING 51 TO (3) 4" WEATHERPROOF L-IPS FOR EXTENSION OF CONDUITS INTO BUILDING 51.
 - (3) 4" CONDUITS STUBBED INTO ROOM 149. REFER TO 2/EP-200.
 - CIRCUIT ROUTED THROUGH LIGHTING CONTROL PANEL (LCP/2). REFER TO SHEET EP-500 FOR (LCP/2) LIGHTING CONTROL PANEL SWITCHING MATRIX AND 3/EP-200 FOR PANEL SCHEDULES.
 - PROVIDE WEATHER PROOF JUNCTION BOX AT +6" AFF FOR FUTURE SIGN.

1 ELECTRICAL SITE PLAN
SCALE: 1"=20'-0"

RECORD DRAWINGS

THIS IS A RECORD DRAWING BASED ON INFORMATION RECEIVED FROM THE CONTRACTOR AND IS TO BE USED FOR THE SOLE PURPOSE OF MAINTENANCE OF THE ORIGINAL FACILITY FOR WHICH THIS DRAWING WAS PREPARED AND NOT FOR ADDITIONAL CONSTRUCTION.

**FULLY SPRINKLERED
RECORD DRAWINGS**

CONSULTANTS:			ARCHITECT:			Drawing Title		Project Title		Project Number				
STRUCTURAL ENGINEER: GREGORY P. LUTH & ASSOCIATES, INC. 3350 SCOTT BLVD, BLDG. 48 SANTA CLARA, CA 95054 PHONE: (408) 654-0475			CODE CONSULTANT/FIRE PROTECTION: KRWME BUILDING GROUP, INC. 1804 BORMAN CIRCLE DRIVE ST. LOUIS, MO 63146 PHONE: (314) 991-2633			ESTIMATING: KRWME BUILDING GROUP, INC. 1204 WASHINGTON AVENUE, SUITE 200 ST. LOUIS, MO 63103 PHONE: (314) 862-5344			MENTAL HEALTH ADDITION, BUILDING 51		657-333			
MECHANICAL/ELECTRICAL/PLUMBING: KJWW ENGINEERING CONSULTANTS #15 SUNNEN DRIVE, SUITE 104 ST. LOUIS, MO 63143 PHONE: (314) 645-1132			CIVIL ENGINEER: ADNA ENGINEERING, INC. 625 N EUCLID AVENUE, SUITE 400 ST. LOUIS, MO 63108 PHONE: (314) 464-0222			THE SEAL (S) AND SIGNATURE(S) APPLY ONLY TO THE DOCUMENT TO WHICH THEY ARE AFFIXED, AND WE EXPRESSLY DISCLAIM ANY RESPONSIBILITY FOR ALL OTHER PLANS, SPECIFICATIONS, ESTIMATES, REPORTS, OR OTHER DOCUMENTS OR INSTRUMENTS RELATING TO OR INTENDED TO BE USED FOR ANY PART OF PARTS OF THE PROJECT. © COPYRIGHT 2011 CHRISTNER INC.			Approved: Project Director		Location JEFFERSON BARRACKS DIVISION		Drawing Number	
No. Date Revisions			ARCHITECTS DESIGNERS PLANNERS LANDSCAPE ARCHITECTS 7711 BONHOAME AVENUE ST. LOUIS, MISSOURI 63105 TEL 314 725 2927 FAX 314 725 2928 CHRISTNERINC.COM			Date 12/21/11		Checked DARCRO		Drawn SHAWHI		ES-101 DWG 69 OF 92		

VA FORM 08-6231 PRINTED TIME: ORIGINAL SIZE OF THIS SHEET IS 30" X 42"

Office of
Construction
and Facilities
Management