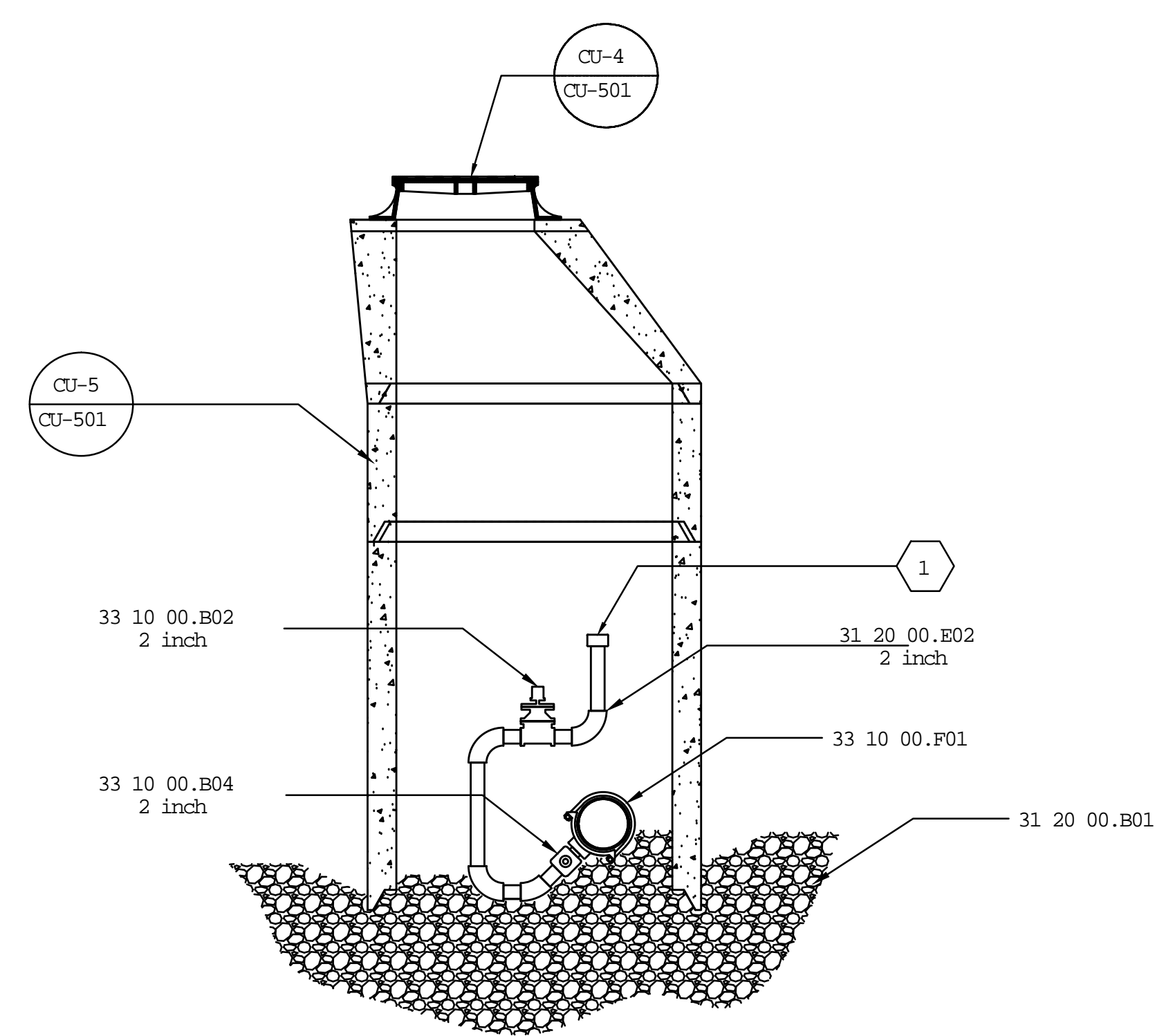
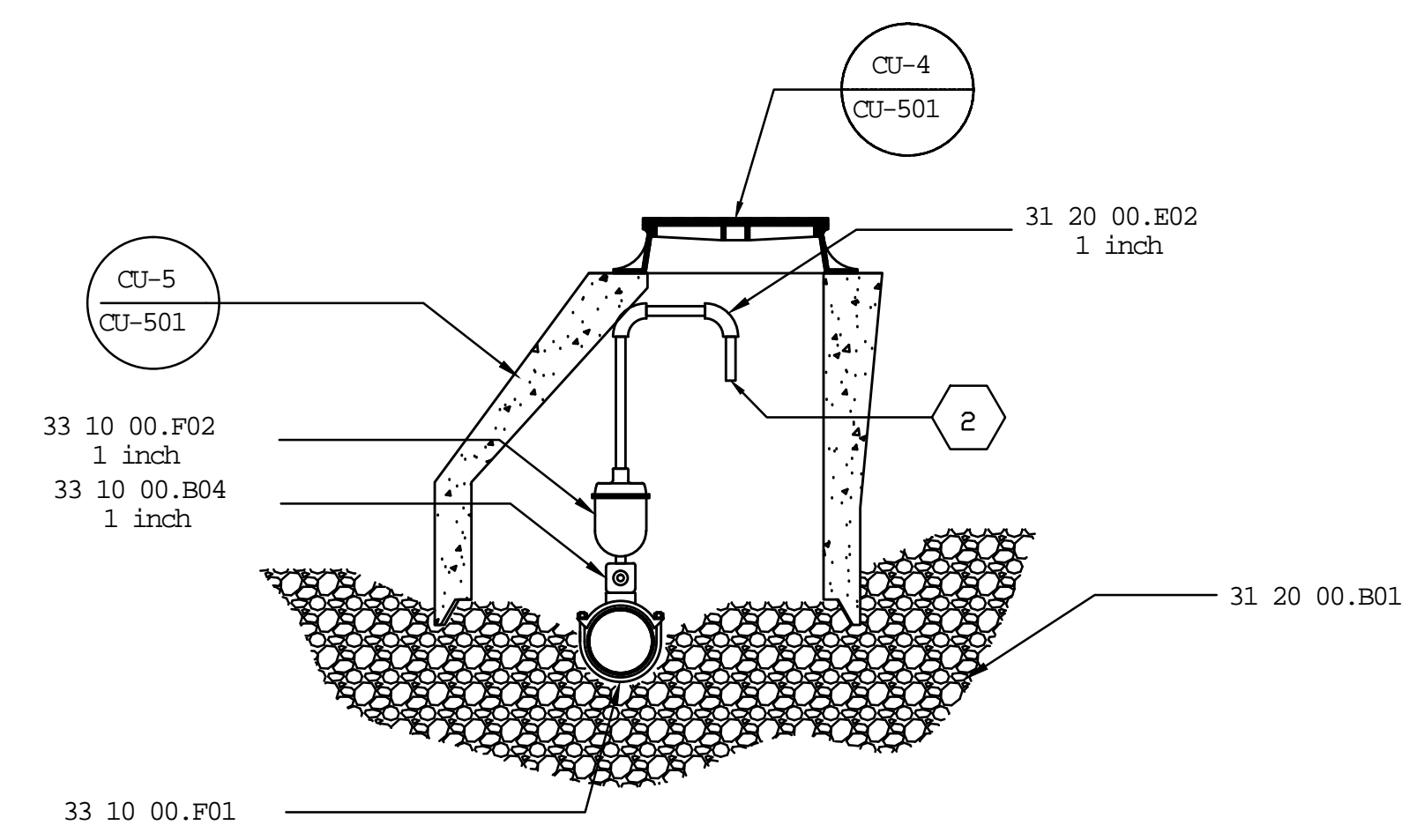


three inches = one foot
one and one-half inches = one foot
one inch = one foot
three-quarters inch = one foot
one-half inch = one foot
three-eighths inch = one foot
one-quarter inch = one foot
one-eighth inch = one foot



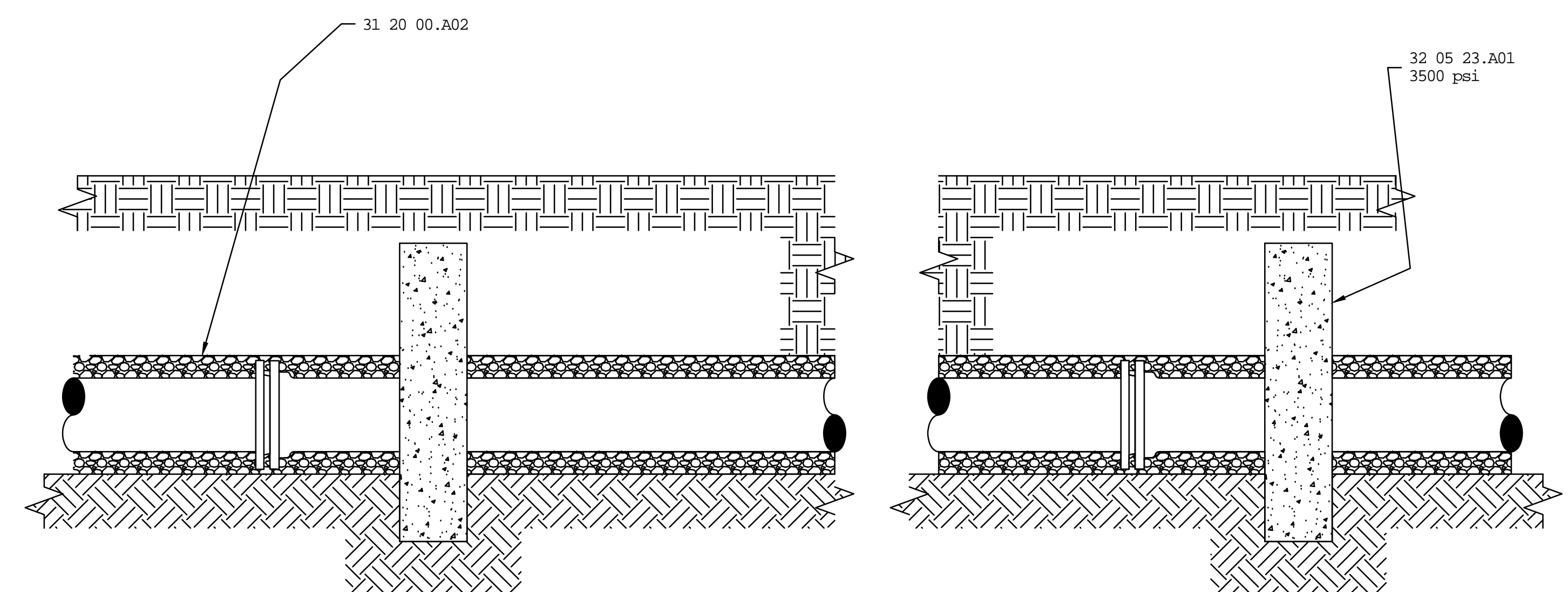
CU-1
CU-501
INLINE BLOW-OFF ASSEMBLY
NTS



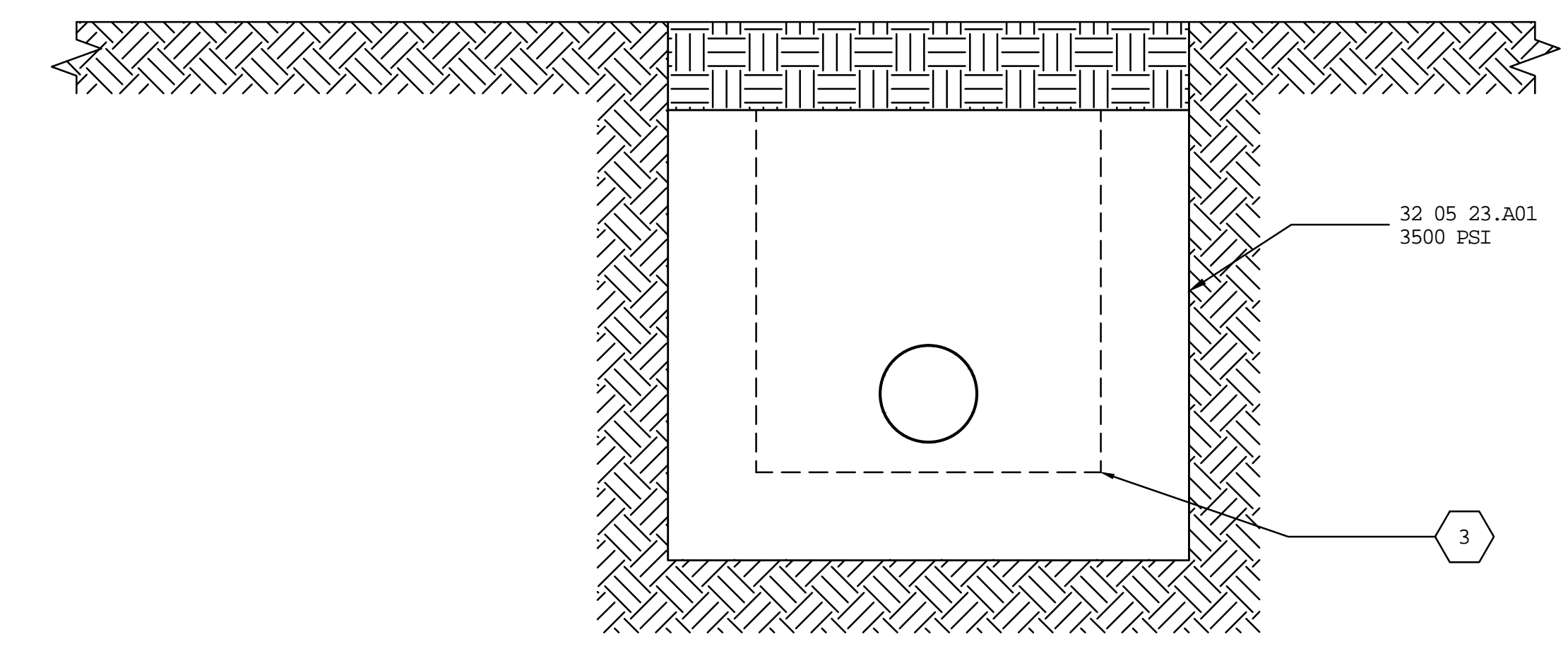
CU-2
CU-501
AUTOMATIC AIR RELEASE ASSEMBLY
NTS

- REFERENCE KEYNOTES
- 31 20 00.A01 Drainage Fill
 - 31 20 00.A02 Pipe Bedding
 - 32 05 23.A01 Concrete
 - 33 10 00.B04 Corporation Stop
 - 33 10 00.E01 Ductile Iron Pipe
 - 33 10 00.E02 Threaded Brass Pipe & Fittings
 - 33 10 00.F01 Tapping Saddle
 - 33 10 00.F02 Combination Air Valve
 - 33 10 00.F03 Precast Manhole
 - 33 10 00.F04 Cast Iron Manhole Frame & Cover

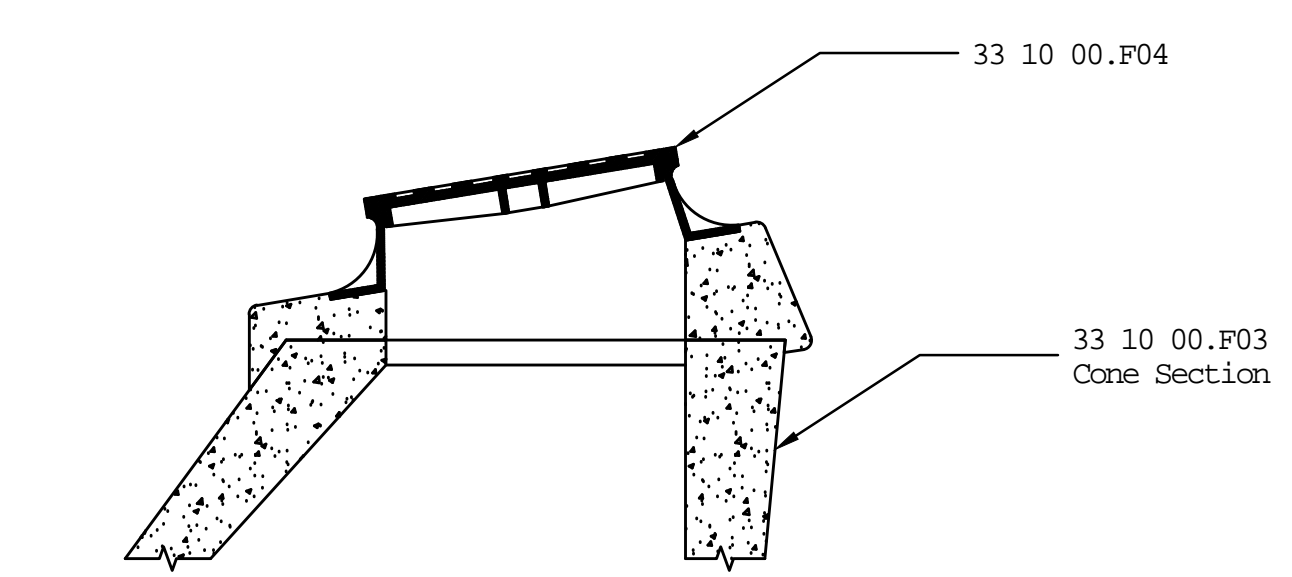
- SHEET KEYNOTES
- 2 inch pipe cap, finger tight
 - Provide screen on end of pipe
 - Pipe trench



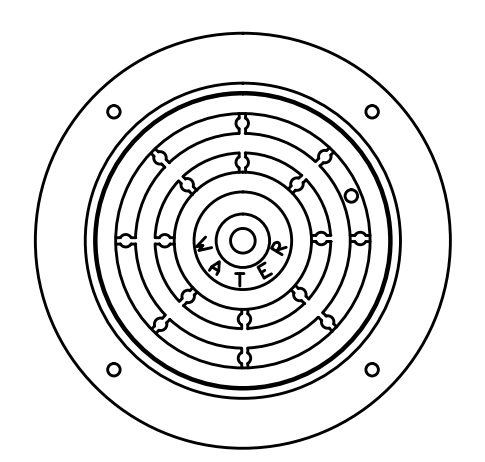
Elevation



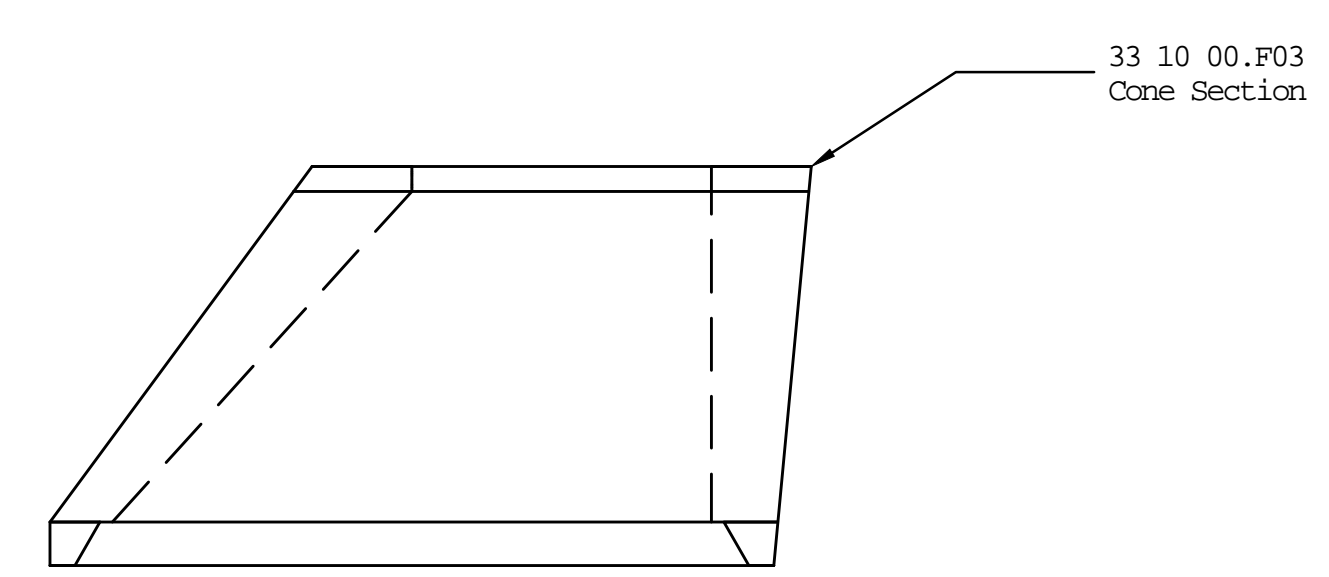
Section



CU-3
CU-501
INSTALLATION DETAIL FOR ALL FRAMES AND COVERS
NTS



CU-4
CU-501
MANHOLE FRAME AND COVER
NTS



CU-5
CU-501
PRECAST MANHOLE CONE & RISER SECTIONS
NTS

CU-6
CU-501
ANTI-SEEPAGE COLLAR
N.T.S

Revisions	Date		Approved: Energy Engineer	Approved: Safety Manager	Approved: Service Chief	Drawing Title CU-501 DETAILS AND ELEVATIONS	Project Title UPGRADE WATER DISTRIBUTION	Building Number	Checked EBC	Drawn WBJ	Location V.A.M.C. SALEM 24153	Date 05-25-12	Veterans Affairs
												Project No. 658-12-104	
												DRAWING NO. 2559	
												Dwg. 19 Of 25	